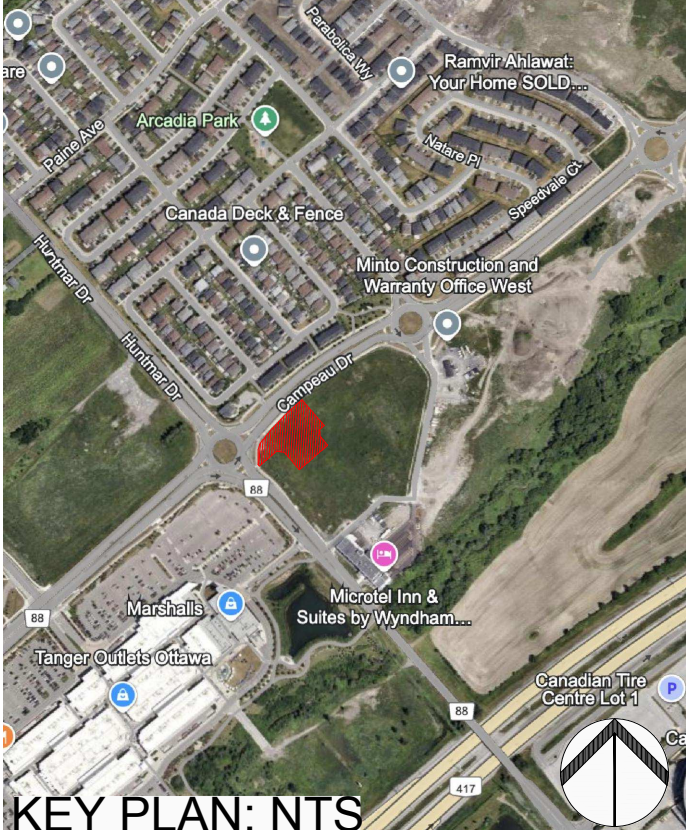


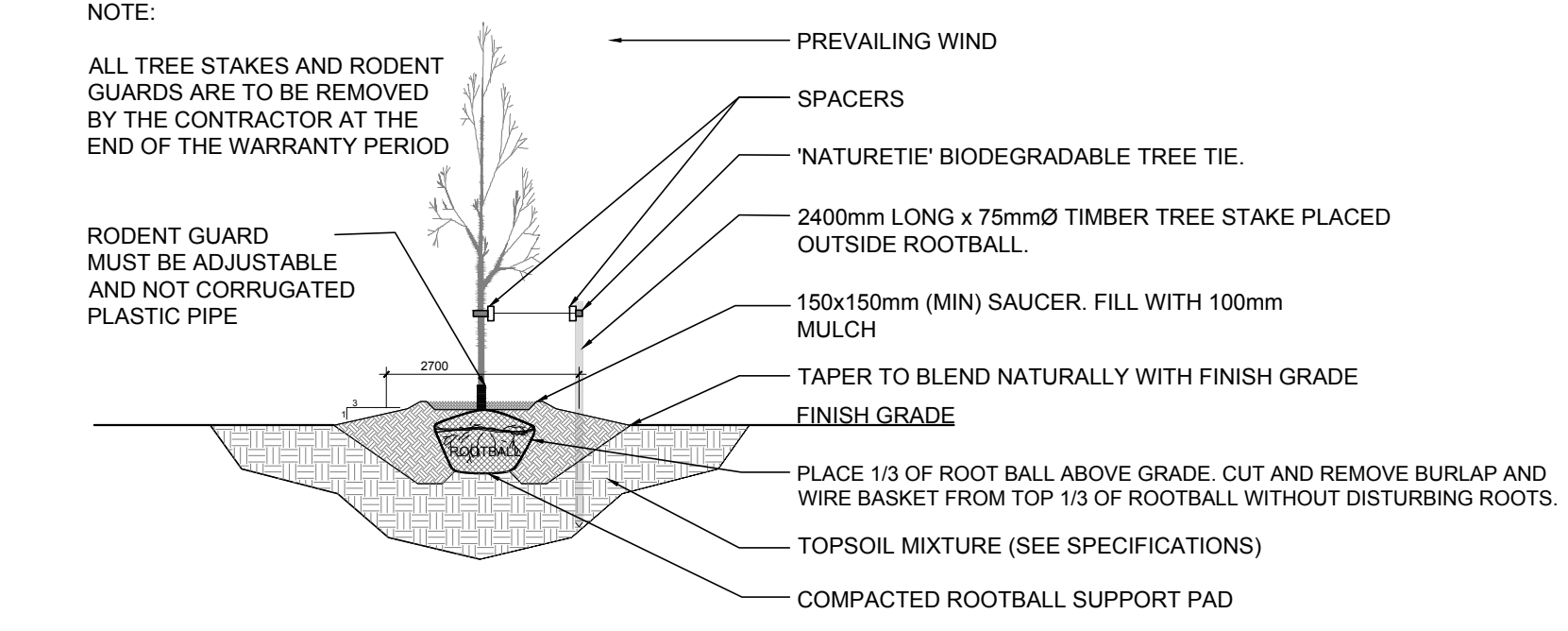
PROPOSED PLANT LIST					
KEY	QTY	BOTANICAL NAME	COMMON NAME	SIZE	CONDITION
TREES					
CS	1	Picea pungens	Colorado Spruce	2.0m ht.	B&B
FM	1	Acer x freemanii	Freeman's Maple	50mm CAL.	B&B
GB	3	Ginkgo biloba	Maidenhair Tree	50mm CAL.	B&B
HB*	2	Celtis occidentalis	Common Hackberry	50mm CAL.	B&B
HL	4	Gleditsia triacanthos	Honey Locust	50mm CAL.	B&B
RO*	1	Quercus rubra	Red Oak	50mm CAL.	B&B
SB*	7	Amelanchier canadensis	Shadblow Serviceberry	50mm CAL.	B&B
SF*	2	Amelanchier laevis 'JFS-ARB'	Spring Flurry Serviceberry	50mm CAL.	B&B
SM*	1	Acer saccharum	Sugar Maple	50mm CAL.	B&B
WB*	1	Betula papyrifera 'Multi-Stem'	Multi-stem Paper Birch	50mm CAL.	B&B
SHRUBS					
Ah	12	Hydrangea arborescens 'Annabelle'	Annabelle Hydrangea	1 gal. pot	Potted
Cj*	14	Juniperus horizontalis	Creeping Juniper	600mm spr.	Potted
Fg	28	Rhus aromatica 'Gro-Low'	Low Gro Fragrant Sumac	600mm ht.	Potted
Mp	2	Pinus mugo var. Pumilio	Dwarf Mugo Pine	600mm spr.	Potted
Rr	17	Rosa rugosa	Rugosa Rose	800mm ht.	Potted
Ss	36	Sorbaria sorbifolia 'Sem'	Sem False Spirea	600mm ht.	Potted
ORNAMENTAL GRASSES					
kf	27	Calamagrostis acutiflora 'Karl Foerster'	Karl Foerster Grass	250mm pot	Potted
ms*	18	Panicum virgatum	Switch Grass	250mm pot	Potted

PLANT NOTES:					
1. * DENOTES NATIVE SPECIES					
2. ALL TREES ARE TO BE PLANTED ON PRIVATE PROPERTY WITH THE EXCEPTION OF TWO SPRING FLURRY SERVICEBERRIES AND TWO SHADBLOW SERVICEBERRIES IN THE CAMPEAU DRIVE R.O.W.					

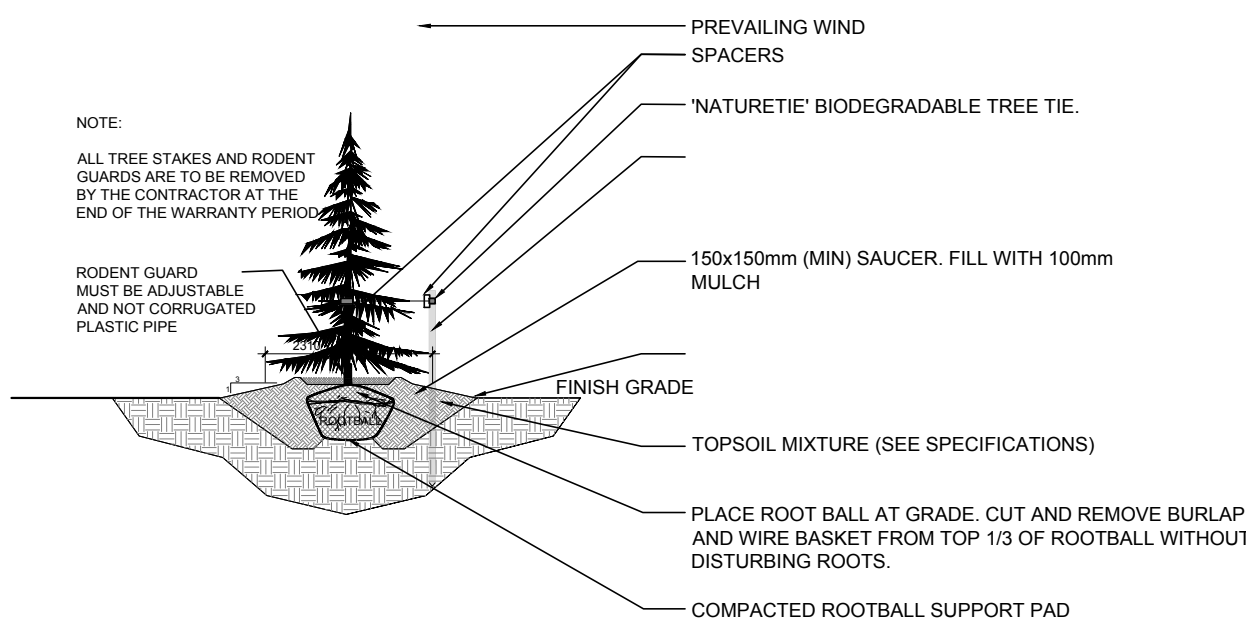
- GENERAL NOTES:**
- IT IS THE RESPONSIBILITY OF THE APPROPRIATE CONTRACTOR OR OFFICIAL TO REPORT ANY ERRORS, OMISSIONS OR DISCREPANCIES ON THIS PLAN WITH ACTUAL SITE CONDITIONS TO THE LANDSCAPE ARCHITECT BEFORE PROCEEDING WITH CONSTRUCTION.
 - THE CONTRACTOR IS TO NOTIFY ALL UTILITY COMPANIES AND AUTHORITIES PRIOR TO ANY EXCAVATION AND ASCERTAIN LOCATIONS OF UNDERGROUND SERVICES.
 - THE CONTRACTOR IS TO REINSTATE ALL AREAS AND ITEMS DAMAGED AS A RESULT OF CONSTRUCTION ACTIVITY.
 - THE CONTRACTOR IS TO COMPLY WITH ALL PERTINENT CODES AND BY-LAWS.
 - THE CONTRACTOR IS TO MAINTAIN A POSITIVE SURFACE RUN-OFF THROUGHOUT THE ENTIRE CONSTRUCTION PERIOD.
 - THE LANDSCAPE ARCHITECT IS NOT RESPONSIBLE FOR SUBSURFACE CONDITIONS.
 - THE CONTRACTOR IS TO IDENTIFY ALL EXISTING TREES TO REMAIN ON SITE WITH THE LANDSCAPE ARCHITECT PRIOR TO CONSTRUCTION.
 - THE CONTRACTOR IS TO STAKE THE PROPOSED LOCATION OF ALL PLANT MATERIAL IN CONJUNCTION WITH THE LANDSCAPE ARCHITECT PRIOR TO EXCAVATION.
 - MINIMUM DISTANCES FOR SELECTED DECIDUOUS TREES ARE AS FOLLOWS:
 - 9.1. BUILDING FOUNDATIONS - 7.5M
 - 9.2. SIDEWALKS - 1.5M
 - 9.3. PUBLIC STREETS - 2.5M
 - 9.4. UNDERGROUND INFRASTRUCTURE - 2.0M
 - ALL TREES WITHIN 1M OF UNDERGROUND UTILITY TRENCHES ARE TO BE EXCAVATED BY HAND.
 - REMOVE ALL PROTECTIVE WRAPPING FROM TREE TRUNKS AFTER INSTALLATION.
 - STAKING OF TREES SHALL ONLY BE PERFORMED IF NECESSARY.
 - ENSURE THAT MULCH IS PULLED BACK A MINIMUM DISTANCE OF 75MM FROM BASE OF TREE TRUNK.
 - TREE SOIL VOLUMES ARE TO BE AS FOLLOWS BASED ON A 1.5m SOIL DEPTH
 - 30m3 FOR A LARGE DECIDUOUS TREE
 - 25m3 FOR EVERGREEN AND MEDIUM DECIDUOUS TREES
 - 20m3 FOR SMALL DECIDUOUS TREES



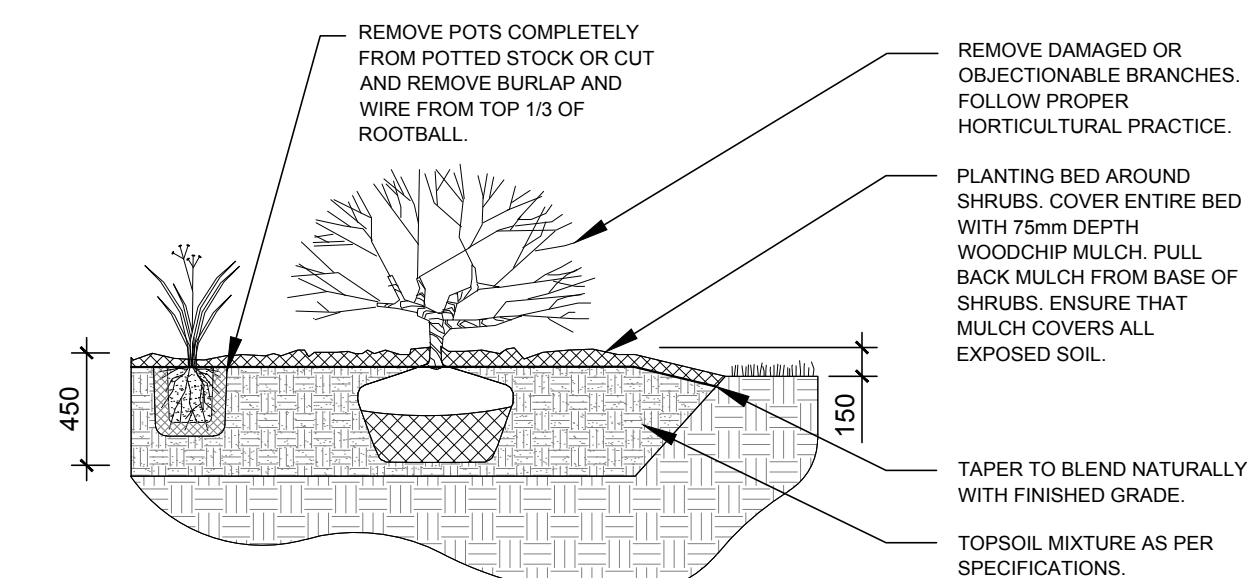
PLAN OF SURVEY OF PART OF BLOCK 1 REGISTERED PLAN 4M-1563 (GEOGRAPHIC TOWNSHIP OF MARCH) CITY OF OTTAWA	
40 YEAR CANOPY CALCULATION:	
-6971 m2 site area	
-8 large trees proposed (154m2 ea.), 5 medium trees proposed (79m2 ea.), 1 large coniferous tree proposed (79m2 ea.) and 9 small trees proposed (7m2 ea.)	
=1,769m2 canopy cover = 25.4% canopy cover	
*Large deciduous tree calculated at 14m spread, medium deciduous trees at 10m spread, small deciduous trees at 3m spread, large coniferous trees at 10m spread	



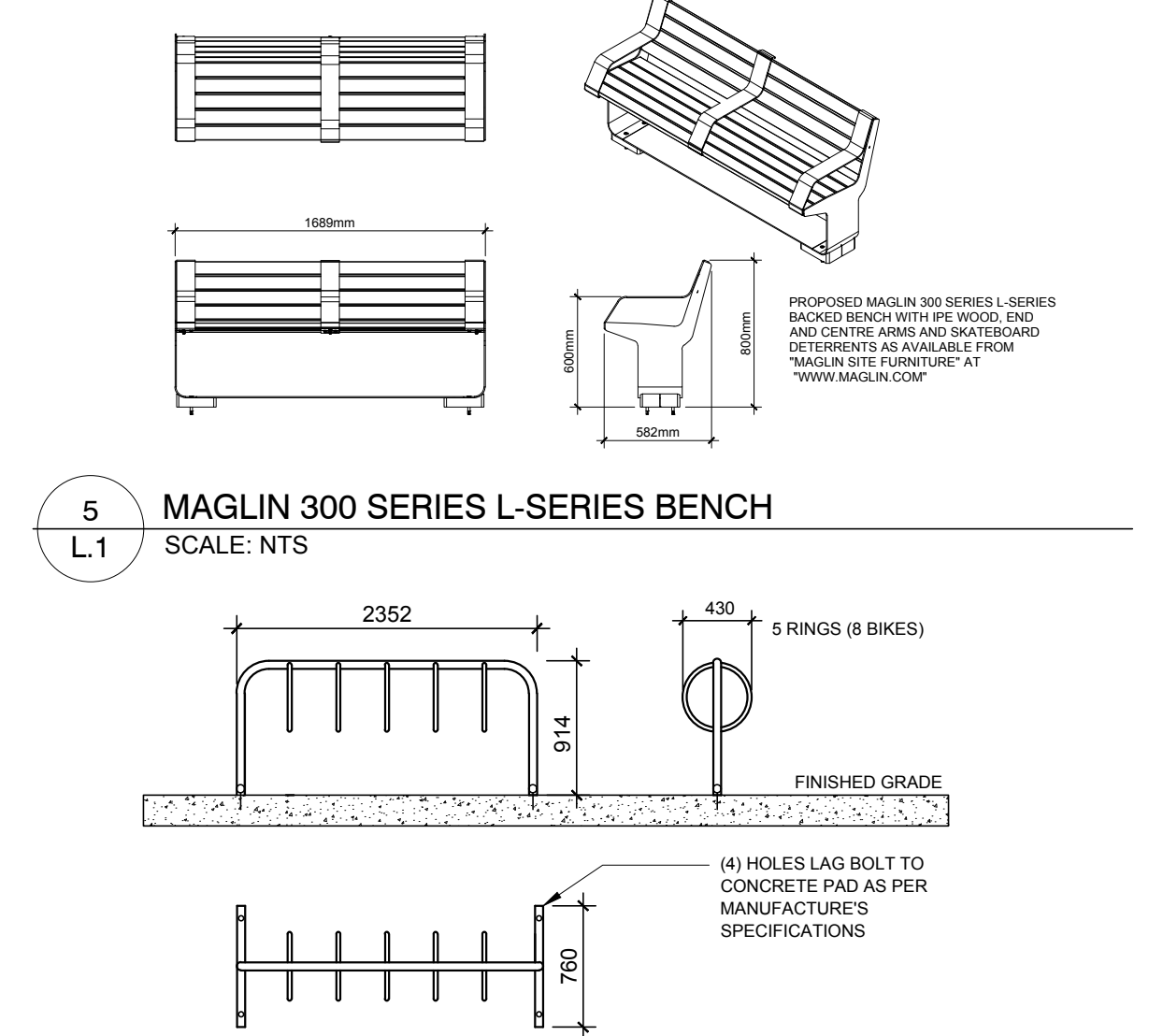
2 DECIDUOUS TREE PLANTING
L.1 SCALE: NTS



3 CONIFEROUS TREE PLANTING
L.1 SCALE: NTS



4 SHRUB / ORNAMENTAL GRASS / PERENNIAL PLANTING
L.1 SCALE: NTS



6 MAZEWELD 5 RING BIKE RACK
L.1 SCALE: NTS

CLIENT

MINTO COMMUNITIES

200 180 KENT STREET, OTTAWA, ON, K1P 0B6
T: 613 - 404 - 4235

CONSULTANTS
ARCHITECTS

DCA

A GROUP OF ARCHITECTS

CIVIL ENGINEERS

ARCADIS

LEGEND

- PROPOSED DECIDUOUS TREE
- 20, 25, or 30m3 SOIL VOLUME (SEE GENERAL NOTES)
- PROPOSED CONIFEROUS TREE
- 25m3 SOIL VOLUME (SEE GENERAL NOTES)
- PROPOSED SHRUBS AND GRASSES
- PROPOSED WOOD CHIP MULCH
- PROPOSED SOD
- GRASS ON CITY PROPERTY
- PROPOSED CONCRETE WALKWAY
- PROPOSED PEASTONE
- PROPOSED MAGLIN 300 SERIES L-SERIES BACKED BENCH WITH IPE WOOD, END AND CENTRE ARMS AND SKATEBOARD DETERRENTS AS AVAILABLE FROM "MAGLIN SITE FURNITURE" AT "WWW.MAGLIN.COM"
- PROPOSED 5 RING BIKE RACK
- PROPERTY LINE

4	REVISED PER CITY COMMENTS	01/24/2025	ML	JL
3	ISSUED FOR SITE PLAN APPROVAL	11/08/2024	CM	JL
2	ISSUED FOR DISCUSSION AND REVIEW	08/30/2024	CM	JL
1	ISSUED FOR DISCUSSION AND REVIEW	06/26/2024	CM	JL

No. Issue Date APPROVED BY DR CK

JAMES B. LENNOX & ASSOCIATES INC.

LANDSCAPE ARCHITECTS

3332 CARLING AVE. OTTAWA, ONTARIO K2H 5A8
Tel. (613) 722-5168 Fax. (866) 343-3942

PROJECT

MINTO DESIGN CENTER

8555 CAMPEAU DR, KANATA ONTARIO

DRAWING

LANDSCAPE PLAN

STAMP

ASSOCIATION OF LANDSCAPE ARCHITECTS OF ONTARIO

MEMBER

PROJECT NORTH

SCALE

AS SHOWN

START DATE

JUNE, 2024

PROJECT NO.

24MIS2436

DRAWING NO.

L.1

PLOT SIZE ARCH-D