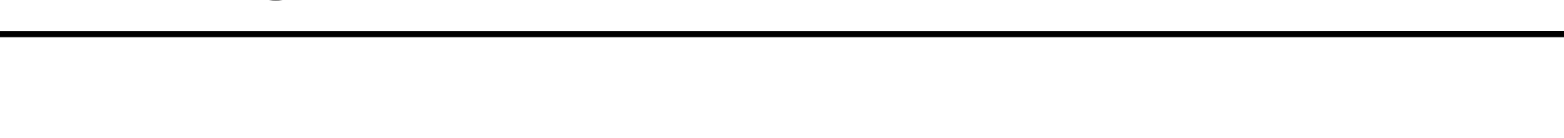
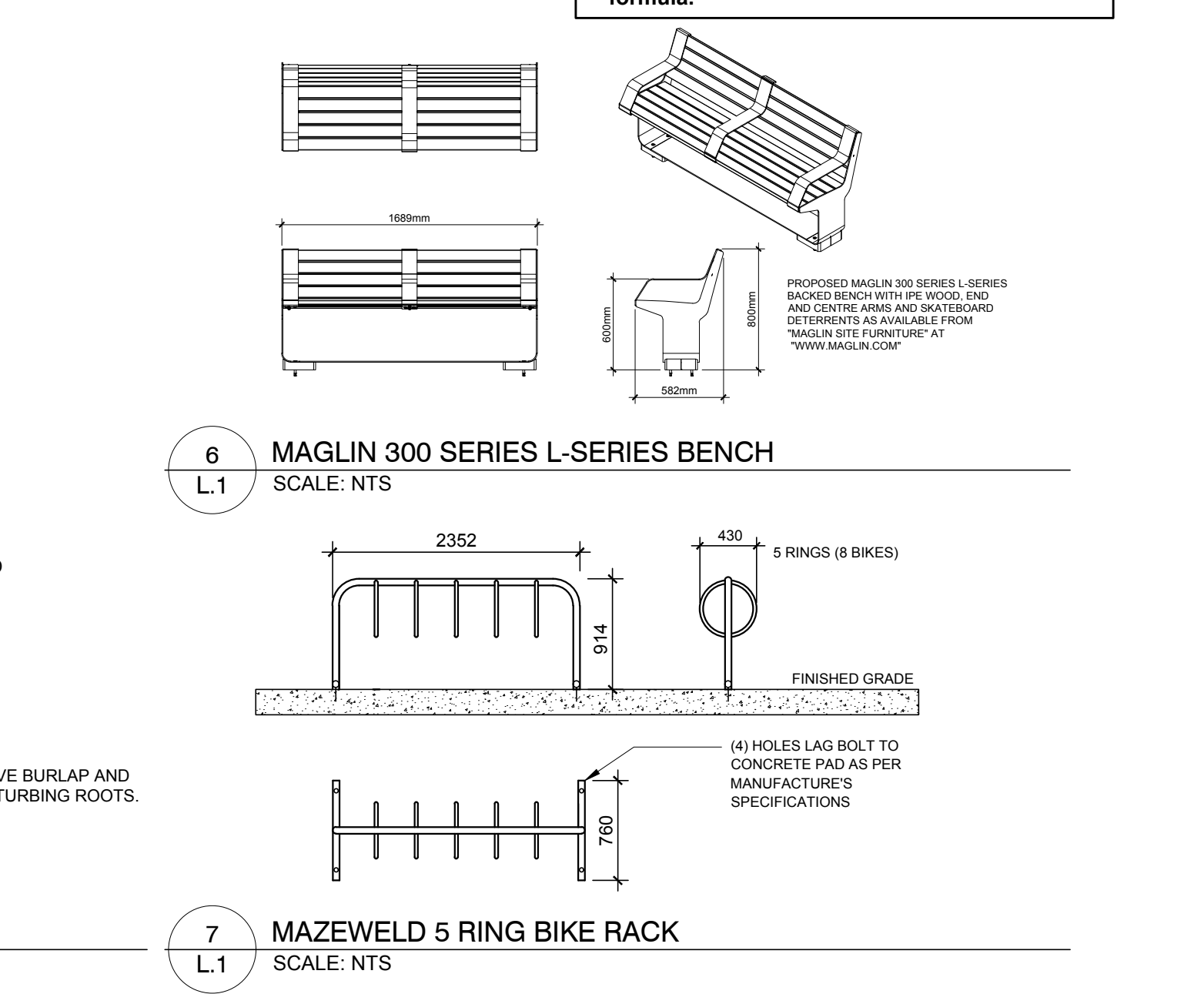
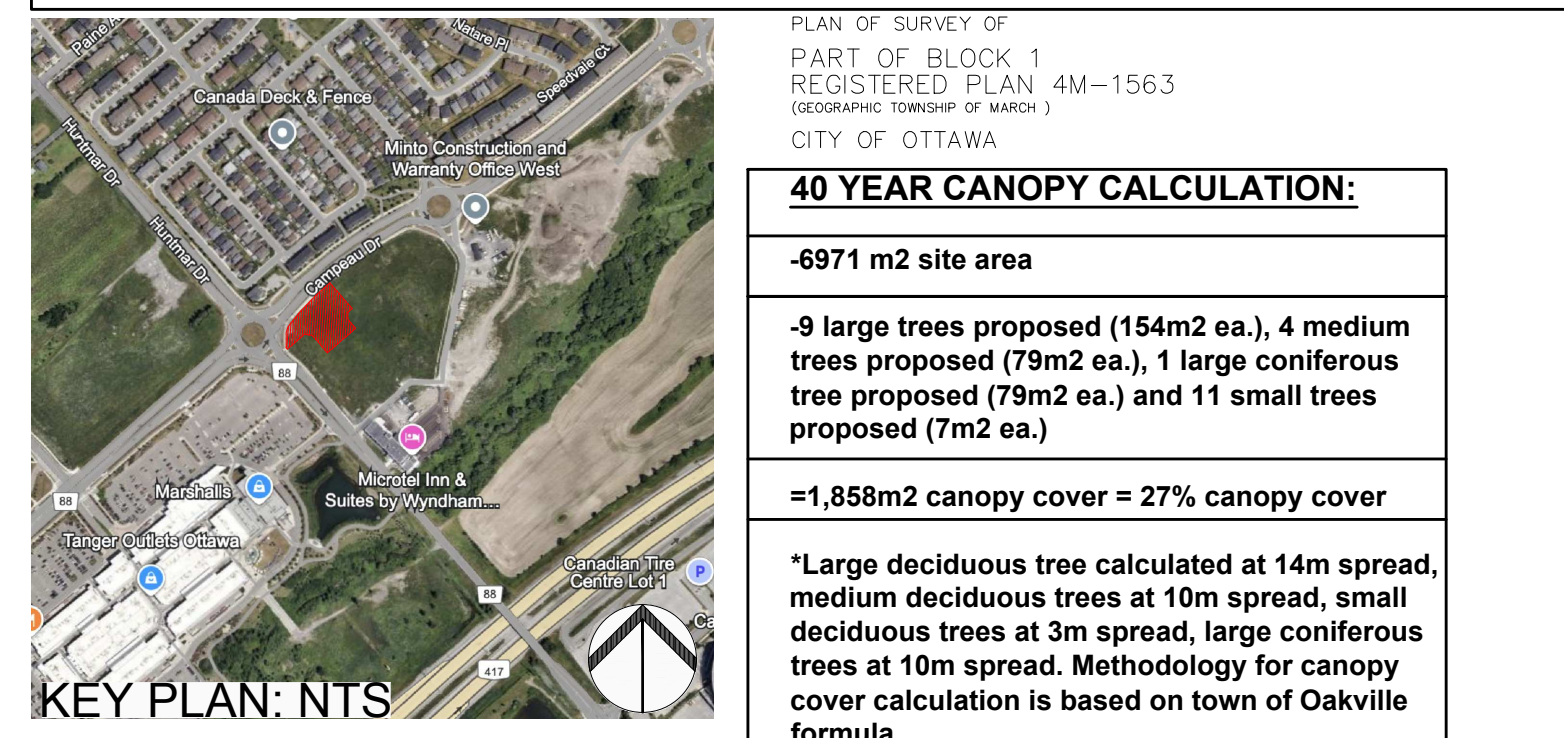


PROPOSED PLANT LIST						QTY	SP
KEY	QTY	BOTANICAL NAME	COMMON NAME	SIZE	CONDITION	SPACING/REMARKS	
TREES							
CS	1	Picea pungens	Colorado Spruce	2.0m ht.	B&B	Large coniferous tree	
FM*	2	Acer x freemanii	Freeman's Maple	50mm CAL.	B&B	Large tree	
GB	3	Ginkgo biloba	Maidenhair Tree	50mm CAL.	B&B	Large tree	
HB*	2	Celtis occidentalis	Common Hackberry	50mm CAL.	B&B	Large tree	
HL*	4	Gleditsia triacanthos	Honey Locust	50mm CAL.	B&B	Medium tree	
RO*	1	Quercus rubra	Red Oak	50mm CAL.	B&B	Large tree	
SB*	7	Amelanchier canadensis	Shadblow Serviceberry	50mm CAL.	B&B	Small tree	
SF*	4	Amelanchier laevis 'JFS-ARB'	Spring Flurry Serviceberry	50mm CAL.	B&B	Small tree	
SM*	1	Acer saccharum	Sugar Maple	50mm CAL.	B&B	Large tree	
SHRUBS							
Ah	11	Hydrangea arborescens 'Annabelle'	Annabelle Hydrangea	1 gal. pot	Potted	2000mm O.C.	
Cj*	14	Juniperus horizontalis	Creeping Juniper	600mm spr.	Potted	1500mm O.C.	
Fg*	26	Rhus aromatica 'Gro-Low'	Low Gro Fragrant Sumac	600mm ht.	Potted	1500mm O.C.	
Mp	2	Pinus mugo var. Pumilio	Dwarf Mugo Pine	600mm spr.	Potted	2000mm O.C.	
Rr	17	Rosa rugosa	Rugosa Rose	800mm ht.	Potted	1500mm O.C.	
Ss	37	Sorbaria sorbifolia 'Sem'	Sem False Spirea	600mm ht.	Potted	1500mm O.C.	
ORNAMENTAL GRASSES							
Kf	31	Calamagrostis acutiflora 'Karl Foerster'	Karl Foerster Grass	250mm pot	Potted	800mm O.C.	
ms*	31	Panicum virgatum	Switch Grass	250mm pot	Potted	500mm O.C.	
GENERAL NOTES:							
1. * DENOTES NATIVE SPECIES							
2. ALL TREES ARE TO BE PLANTED ON PRIVATE PROPERTY WITH THE EXCEPTION OF TWO SPRING FLURRY SERVICEBERRIES AND THREE SHADBLOW SERVICEBERRIES IN THE CAMPEAU DRIVE R.O.W.							
3. THE CONTRACTOR IS TO REINSTATE ALL AREAS AND ITEMS DAMAGED AS A RESULT OF CONSTRUCTION ACTIVITY.							
4. THE CONTRACTOR IS TO COMPLY WITH ALL PERTINENT CODES AND BY-LAWS.							
5. THE CONTRACTOR IS TO MAINTAIN A POSITIVE SURFACE SURFACE RUN-OFF THROUGHOUT THE ENTIRE CONSTRUCTION PERIOD.							
6. THE LANDSCAPE ARCHITECT IS NOT RESPONSIBLE FOR SUBSURFACE CONDITIONS.							
7. THE CONTRACTOR IS TO IDENTIFY ALL EXISTING TREES TO REMAIN ON SITE WITH THE LANDSCAPE ARCHITECT PRIOR TO CONSTRUCTION.							
8. THE CONTRACTOR IS TO STAKE THE PROPOSED LOCATION OF ALL PLANT MATERIAL IN CONJUNCTION WITH THE LANDSCAPE ARCHITECT PRIOR TO EXCAVATION.							
9. MINIMUM DISTANCES FOR SELECTED DECIDUOUS TREES ARE AS FOLLOWS:							
9.1. BUILDING FOUNDATIONS - 4.5M							
9.2. SIDEWALKS - 1.5M							
9.3. PUBLIC STREETS - 2.5M							
9.4. UNDERGROUND INFRASTRUCTURE - 2.0M							
10. ALL TREES WITHIN 1M OF UNDERGROUND UTILITY TRENCHES ARE TO BE EXCAVATED BY HAND.							
11. REMOVE ALL PROTECTIVE WRAPPING FROM TREE TRUNKS AFTER INSTALLATION.							
12. STAKING OF TREES SHALL ONLY BE PERFORMED IF NECESSARY.							
13. ENSURE THAT MULCH IS PULLED BACK A MINIMUM DISTANCE OF 75MM FROM BASE OF TREE TRUNK.							
14. TREE SOIL VOLUMES ARE TO BE AS FOLLOWS BASED ON A 1.5m SOIL DEPTH							
- 30m³ FOR A LARGE AND MEDIUM DECIDUOUS TREE							
- 25m³ FOR CONIFEROUS TREES							
- 25m³ FOR SMALL DECIDUOUS TREES							
15. THIS PLAN HAS BEEN PREPARED PER THE GEOTECHNICAL REPORT (PATERSON GROUP, DECEMBER 19, 2024), DRAWING PG7168-1.							
16. THE FOLLOWING CONDITIONS MUST BE MET IN ORDER FOR TREE PLANTING WITHIN 4.5m OF THE BUILDING							
-THE UNDERSIDE OF FOOTING (USF) IS 2.1m OR GREATER BELOW THE LOWEST FINISHED GRADE MUST BE SATISFIED FOR FOOTINGS WITHIN 10m FROM THE TREE, AS GRADING PLAN AS INDICATED PROCEDURAL CHANGES BELOW.							
-A SMALL TREE MUST BE PROVIDED WITH A MINIMUM OF 25m³ OF AVAILABLE SOIL VOLUME WHILE A MEDIUM TREE MUST BE PROVIDED WITH A MINIMUM OF 30m³ OF AVAILABLE SOIL VOLUME, AS DETERMINED BY THE LANDSCAPE ARCHITECT. THE DEVELOPER IS TO ENSURE THAT THE SOIL IS GENERALLY UN-COMPACTED WHEN BACKFILLING IN STREET TREE PLANTING LOCATIONS							
-THE TREE SPECIES MUST BE SMALL (MATURE HEIGHT UP TO 7.5m) TO MEDIUM SIZE (MATURE HEIGHT 7.5m TO 14m) AS CONFIRMED BY THE LANDSCAPE ARCHITECT.							
-THE FOUNDATION WALLS PLACED ON THE SIDES OF THE BUILDING THE TREES ARE LOCATED ARE TO BE REINFORCED AT LEAST NOMINALLY (MINIMUM OF TWO UPPER AND TWO LOWER 15m BARS IN THE FOUNDATION WALL).							
-GRADING SURROUNDING THE TREE MUST PROMOTE DRAINAGE TO THE TREE ROOT ZONE (IN SUCH A MANNER AS NOT TO BE DETRIMENTAL TO THE TREE).							



CLIENT

MINTO COMMUNITIES

200 180 KENT STREET, OTTAWA, ON, K1P 0B6
T: 613 - 404 - 4235

CONSULTANTS
ARCHITECTS

DCA

A GROUP OF ARCHITECTS

CIVIL
ENGINEERS

ARCADIS

333 Preston St Suite 500, Ottawa, ON K1S 5N4
613-721-0555

LEGEND

9

NOTES REVISED AS PER CITY COMMENTS

04/29/2025

ML

JL

8

REVISED PER CITY COMMENTS

04/16/2025

ML

JL

7

REVISED PER FORESTRY COMMENTS

03/24/2025

ML

JL

6

REVISED PER NEW CIVIL DRAWING

03/06/2025

ML

JL

5

REVISED PER CITY COMMENTS

03/03/2025

ML

JL

4

REVISED PER CITY COMMENTS

01/24/2025

ML

JL

3

ISSUED FOR SITE PLAN APPROVAL

11/08/2024

CM

JL

2

ISSUED FOR DISCUSSION AND REVIEW

08/30/2024

CM

JL

1

ISSUED FOR DISCUSSION AND REVIEW

06/26/2024

CM

JL

No.

Issue

Date

DR

CK

JAMES B. LENNOX & ASSOCIATES INC.

LANDSCAPE ARCHITECTS

3332 CARLING AVE. OTTAWA, ONTARIO K2H 5A8
Tel. (613) 722-5168 Fax. (1866) 343-3942

PROJECT

MINTO DESIGN CENTRE

370 HUNTMAR DRIVE, KANATA ONTARIO

DRAWING

LANDSCAPE PLAN

STAMP

ASSOCIATION OF LANDSCAPE ARCHITECTS

MEMBER

AS SHOWN

START DATE

JUNE, 2024

PROJECT NO.

24MIS2436

PROJECT NORTH

DRAWING NO.

L.1

PLOT SIZE ARCH-D