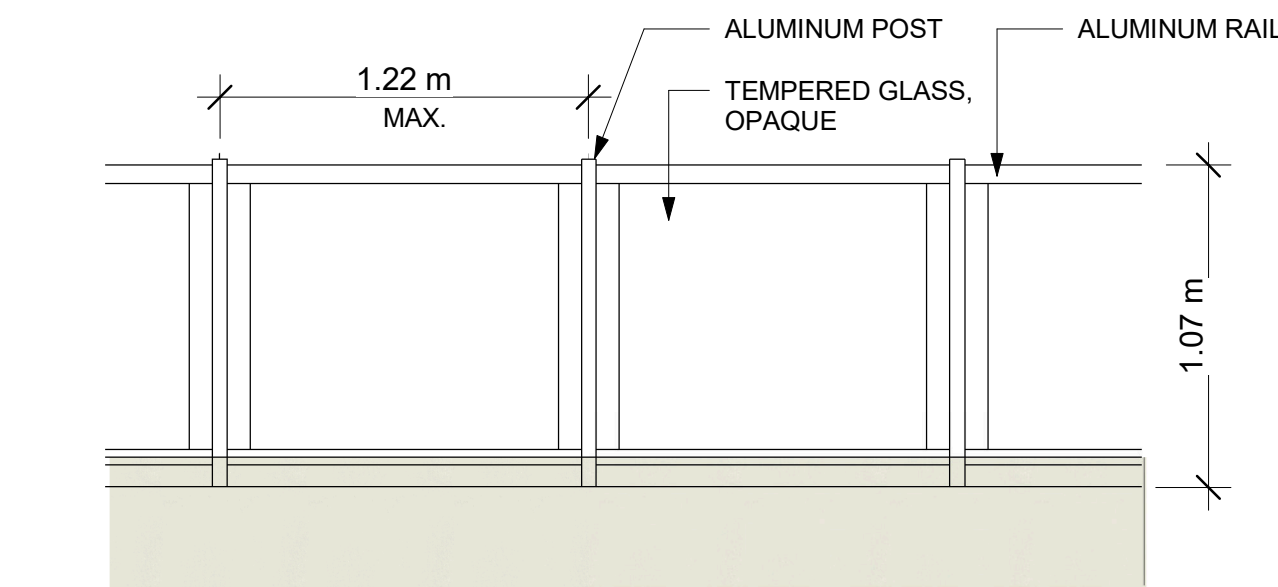


1 Front (East) Elevation
3/16" = 1'-0"

2 Side (North) Elevation
3/16" = 1'-0"



5 ROOFTOP GUARDRAIL
1 : 25

- MATERIAL LEGEND & NOTES**
- 1 STONE VENEER
 - 2 METAL PANEL or CEMENT BOARD, LIGHT GREY
 - 3 METAL PANEL or CEMENT BOARD, BROWN
 - 4 METAL PANEL or CEMENT BOARD, DARK GREY
 - 5 VERTICAL METAL PANEL or CEMENT BOARD, LIGHT GREY
 - 6 PRECAST PARAPET CAP
 - 7 OPAQUE GLASS RAILING
 - 8 OPAQUE FENCE
 - 9 BIRD-SAFE GLASS

116-118 CARRUTHERS AVE.
FOUR STOREY LOW RISE
APARTMENT DWELLING

OWNER/DEVELOPER:
MA PRECIOUS HOLDING INC.

ARCHITECT:
REDLINE ARCHITECTURE INC.

APPLICANT:
OR PLANNING + DESIGN,
DANYA EDWARDS
24 KIRKSTALL AVENUE, OTTAWA,
ON K1G 3M5

CIVIL ENGINEER:
EIP SERVICES INC.
100-2602 QUEENSWAY DRIVE
OTTAWA, ONTARIO K2B 9H6

LANDSCAPING:
JAMES B. LENVOX & ASSOCIATES INC.
3332 CARLING AVE. OTTAWA ON K2H 5A8
CANADA

SURVEYOR:
ADVLTD,
14 CONCOURSE GATE, SUITE 500
OTTAWA, ON K2E 7G6

CONSULTANTS:
STRUCTURAL - TBD
MECHANICAL - TBD
ELECTRICAL - TBD

	MDY
9	
8	
7	
6	
5	
4	
3	ISSUED FOR SPA REV. 05/02/25
2	ISSUED FOR SPA REV. 01/02/25
1	ISSUED FOR SPA 11/12/24
NO.	REVISION/ISSUE DATE

PROJECT:
116-118 CARRUTHERS AVE.
116-118 CARRUTHERS AVE.
OTTAWA, ON K1Y 1N6

RESPONSIBILITIES:
DO NOT SCALE DRAWINGS
ALL DESIGN AND CONSTRUCTION TO BE IN ACCORDANCE WITH THE ONTARIO BUILDING CODE 2012
ALL CONTRACTORS MUST WORK IN ACCORDANCE WITH ALL LAWS, REGULATIONS AND BYLAWS HAVING JURISDICTION
IT IS THE RESPONSIBILITY OF THE APPROPRIATE CONTRACTOR TO CHECK AND VERIFY ALL DIMENSIONS ON SITE AND REPORT ALL ERRORS AND OMISSIONS TO THE ARCHITECT/DESIGNER
THIS DRAWING MAY NOT BE USED FOR CONSTRUCTION UNTIL SIGNED BY THE ARCHITECT
COPYRIGHT RESERVED

GENERAL NOTES:

ONTARIO ASSOCIATION
OF
ARCHITECTS
LEVENT TATAR
LICENCE
9542

116-118 CARRUTHERS AVE.
FOUR STOREY LOW RISE
APARTMENT DWELLING

OWNER/DEVELOPER:
MA PRECIOUS HOLDING INC.

ARCHITECT:
REDLINE ARCHITECTURE INC.

APPLICANT:
GO PLANNING + DESIGN,
DAYNA EDWARDS
24 KIRKSTALL AVENUE, OTTAWA,
ON K2G 3M5

CIVIL ENGINEER:
EXP SERVICES INC.
100-2050 QUEENSWAY DRIVE
OTTAWA, ONTARIO K2H 8H6

LANDSCAPING:
JAMES B. LENNOX & ASSOCIATES INC.
3332 CARLING AVE OTTAWA ON, CAN K2H 5A8
CANADA

SURVEYOR:
ADV LT.
141 CONROUSE GATE, SUITE 500
OTTAWA, ON K2E-7S6

CONSULTANTS:

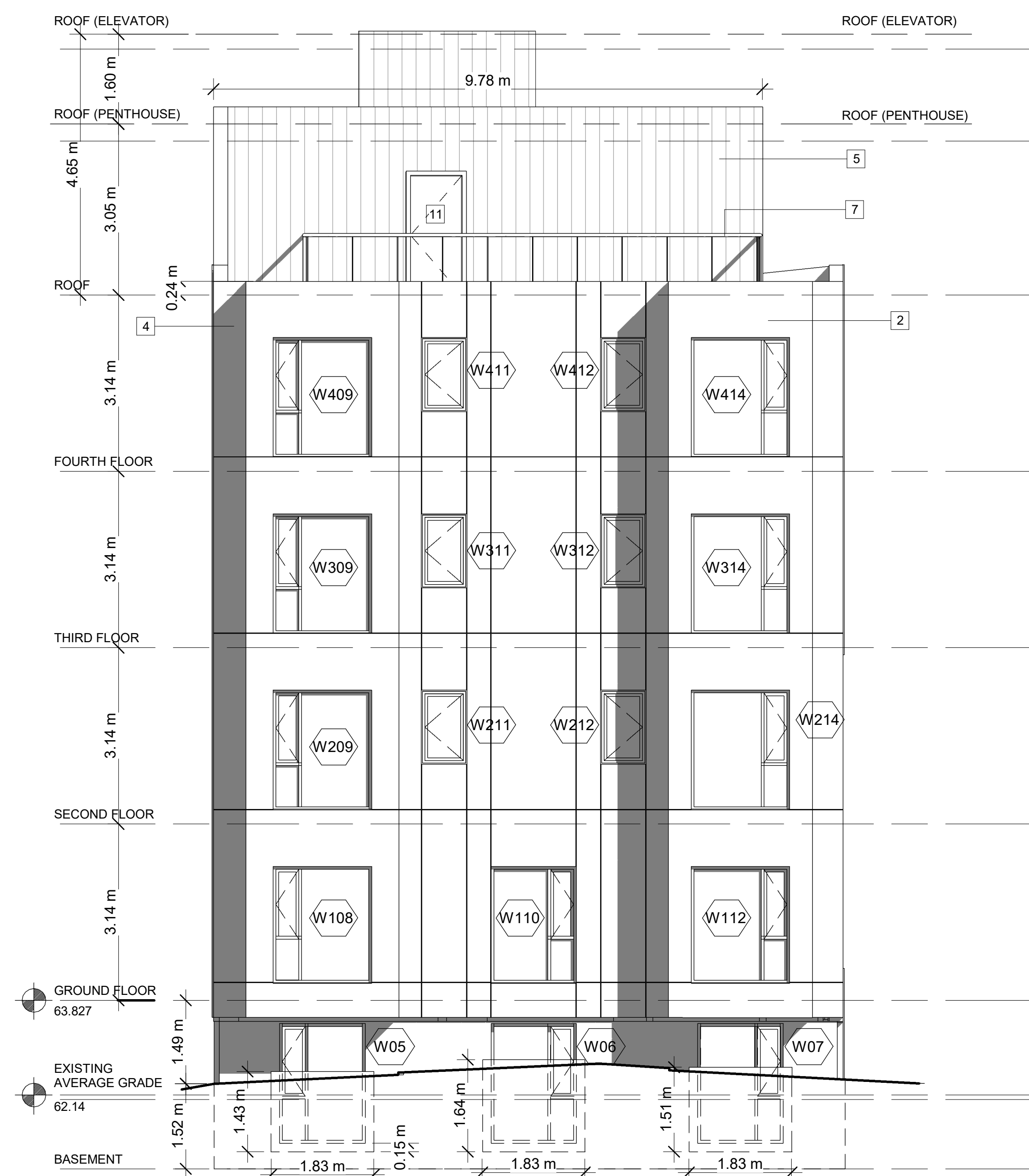
STRUCTURAL - TBD
MECHANICAL - TBD
ELECTRICAL - TBD

ELECTRICAL - TBD		M/D
9		
8		
7		
6		
5		
4		
3	ISSUED FOR SPA REV.	05/02/20
2	ISSUED FOR SPA REV.	01/02/20
1	ISSUED FOR SPA	11/12/19
NO.	REVISION/ISSUE	DATE

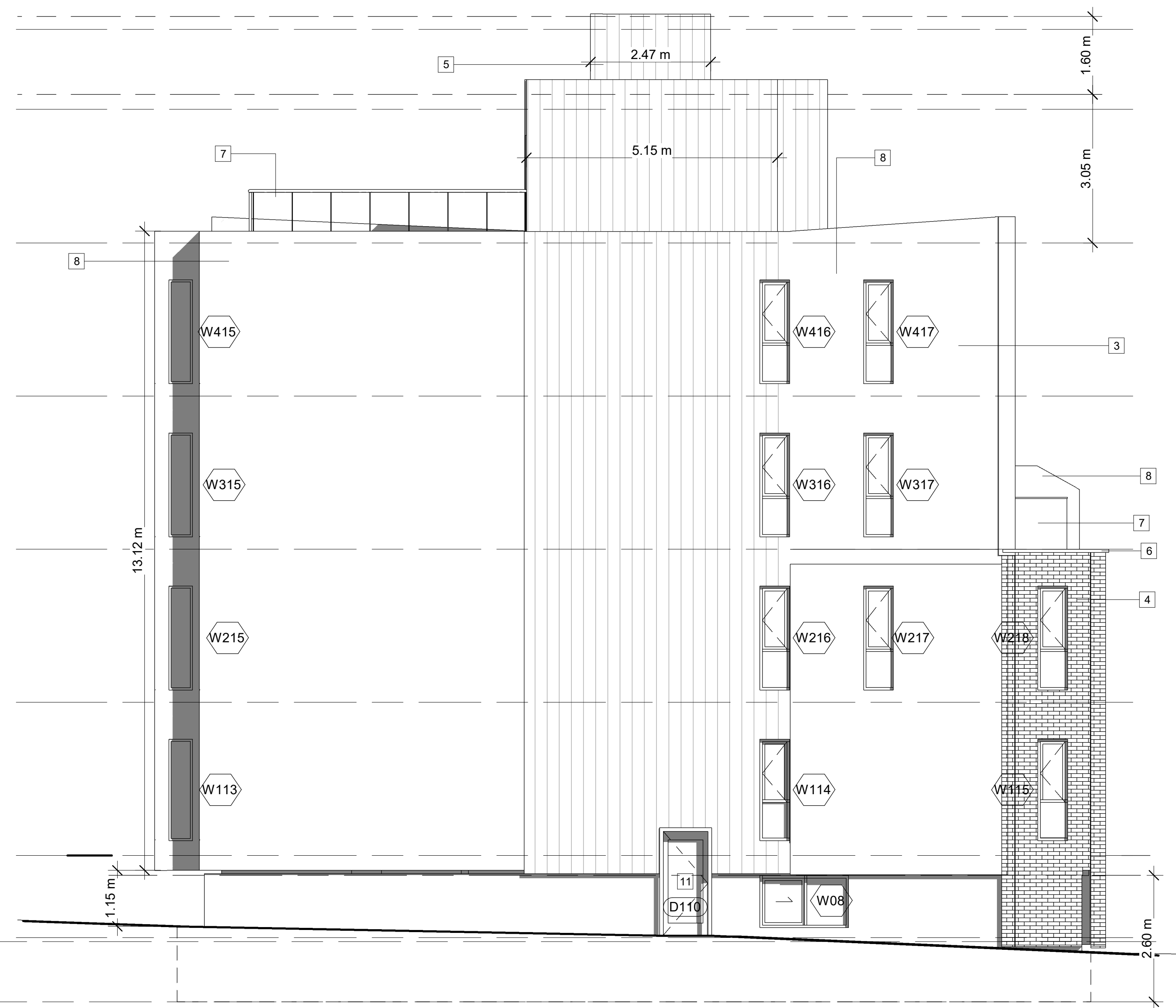
116-118 CARRUTHERS AVE.
116-118 CARRUTHERS AVE.
OTTAWA, ON K1Y 1N5

WEST AND SOUTH
ELEVATIONS

DRAWN BY:		SHEET: A8
DATE: MAY 3, 2024		
SCALE: AS NOTED		



1 Rear (West) Elevation
3/16" = 1'-0"



2 Side (South) Elevation
3/16" = 1'-0"