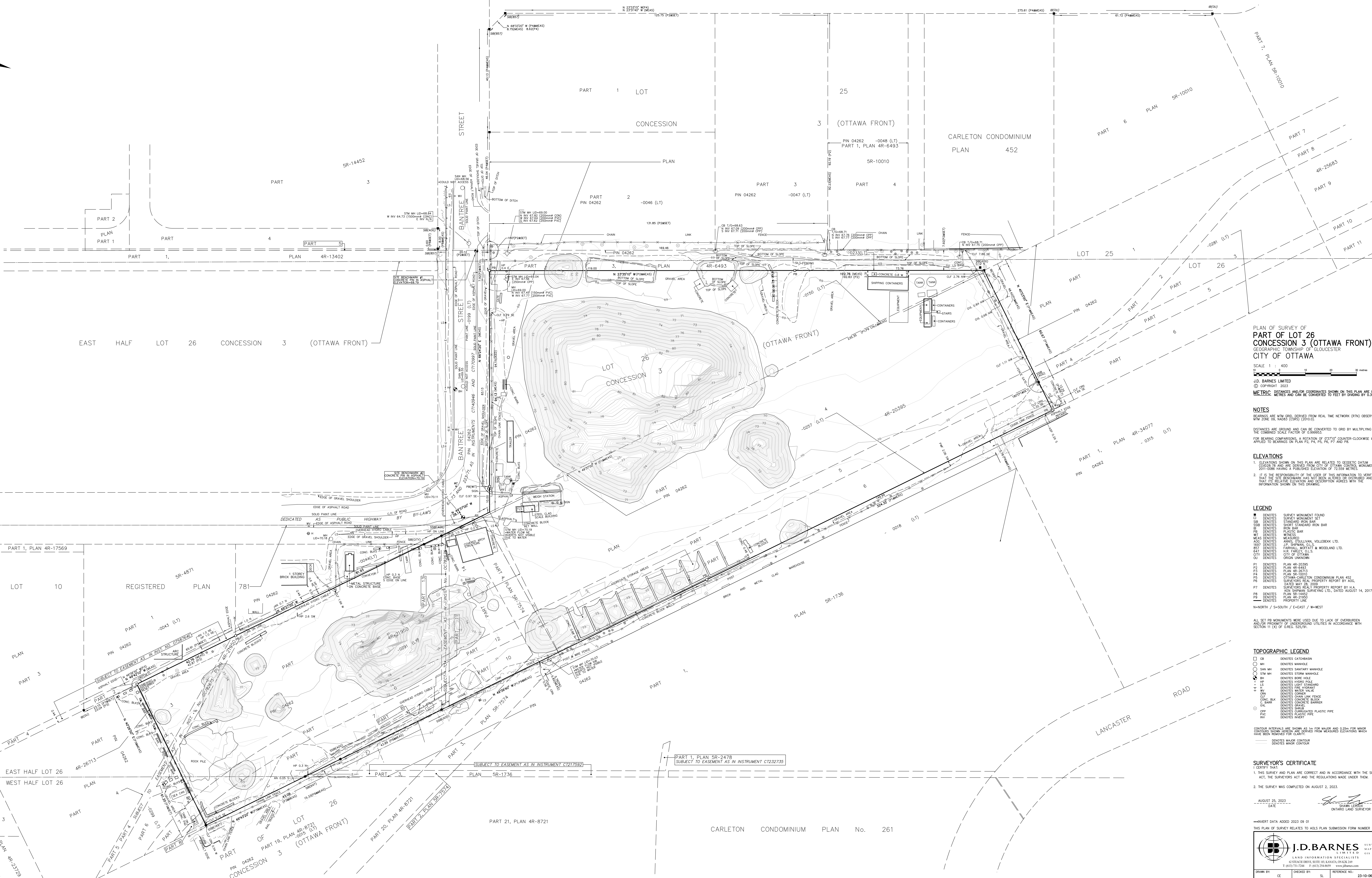


EDINBURGH PLACE



PLAN OF SURVEY OF
**PART OF LOT 26
 CONCESSION 3 (OTTAWA FRONT)**
 GEOGRAPHIC TOWNSHIP OF GLOUCESTER
 CITY OF OTTAWA

SCALE 1 : 400
 J.D. BARNES LIMITED
 © COPYRIGHT 2023
 METRIC DISTANCES AND/OR COORDINATES SHOWN ON THIS PLAN ARE IN METRES AND CAN BE CONVERTED TO FEET BY DIVIDING BY 0.3048.

NOTES
 BEARINGS ARE TRUE ORS. DERIVED FROM REAL TIME NETWORK (RTN) OBSERVATIONS.
 DISTANCES ARE GROUND AND CAN BE CONVERTED TO GRID BY MULTIPLYING BY THE COMBINED SCALE FACTOR OF 0.999953.
 FOR BEARING COMPARISONS, A SECTION OF 0.0071 COUNTER-CLOCKWISE WAS APPLIED TO BEARINGS ON PLAN P2, P4, P5, P6, P7 AND P8.

ELEVATIONS
 1. ELEVATIONS SHOWN ON THIS PLAN ARE RELATED TO GEODETIC DATUM 2011 AND ARE DERIVED FROM A BENCHMARK OF 72.59 METRES MONUMENT 2011-008. A BENCHMARK OF 0.0071 COUNTER-CLOCKWISE WAS APPLIED TO BEARINGS ON PLAN P2, P4, P5, P6, P7 AND P8.
 2. IT IS THE RESPONSIBILITY OF THE USER OF THIS INFORMATION TO VERIFY THAT THE SITE BENCHMARK HAS NOT BEEN ALTERED OR DISTURBED AND THAT ITS RELATIVE ELEVATION AND DESCRIPTION AGREES WITH THE INFORMATION SHOWN ON THIS DRAWING.

LEGEND

■	BEARINGS	SURVEY MONUMENT FOUND
□	BEARINGS	SURVEY MONUMENT SET
○	BEARINGS	STANDARD IRON BAR
○	BEARINGS	SHORT STANDARD IRON BAR
○	BEARINGS	IRON BAR
○	BEARINGS	PLASTIC BAR
○	BEARINGS	MESSENGER
○	BEARINGS	WOOD
○	BEARINGS	ANNE'S (SUSILAVIA VOLLEBEK LTD.)
○	BEARINGS	J.P. SPARKS, O.L.S.
○	BEARINGS	FARHALL, WOFFATT & WOODLAND LTD.
○	BEARINGS	HIS FAMILY, O.L.S.
○	BEARINGS	CITY OF OTTAWA
○	BEARINGS	ORION CONDOMINIUM

P1 BEARINGS PLAN 4R-20395
 P2 BEARINGS PLAN 4R-6493
 P3 BEARINGS PLAN 4R-26713
 P4 BEARINGS PLAN SR-10010
 P5 BEARINGS OTTAWA CONDOMINIUM PLAN 452
 P6 BEARINGS SURVEYORS REAL PROPERTY REPORT BY SOG
 P7 BEARINGS SURVEYORS REAL PROPERTY REPORT BY H.A. KEN SURVIVOR SURVEYING LTD., DATED AUGUST 14, 2017
 P8 BEARINGS PLAN SR-14452
 P9 BEARINGS PLAN 4R-20395
 P10 BEARINGS PROPERTY LINE

N= NORTH / S= SOUTH / E= EAST / W= WEST

ALL SET FB MONUMENTS WERE USED DUE TO LACK OF OVERBURDEN AND/OR PROHIBITION OF UNDERGROUND UTILITIES IN ACCORDANCE WITH SECTION 11 (4) OF OREG. 50/91.

TOPOGRAPHIC LEGEND

□	CB	DEMOTES CATCH BASIN
○	SH	DEMOTES MOUND
○	SH	DEMOTES SANDHAY MOUND
○	SH	DEMOTES STORM MOUND
○	SH	DEMOTES SORE HOLE
○	SH	DEMOTES UNDER-POLE
○	SH	DEMOTES WATER MOUND
○	SH	DEMOTES FIVE HYDRAULIC
○	SH	DEMOTES WATER WALK
○	SH	DEMOTES CONCRETE
○	SH	DEMOTES STAINLESS FENCE
○	SH	DEMOTES CONCRETE BARRIER
○	SH	DEMOTES BRICK
○	SH	DEMOTES CORRUGATED PLASTIC PIPE
○	SH	DEMOTES INVERT

CONTOUR INTERVALS ARE SHOWN AS 1m FOR MAJOR AND 0.25m FOR MINOR. HAVEN BEEN REMOVED FOR CLARITY.
 DEMOTES MAJOR CONTOUR
 DEMOTES MINOR CONTOUR

SURVEYOR'S CERTIFICATE
 I CERTIFY THAT:
 1. THIS SURVEY AND PLAN ARE CORRECT AND IN ACCORDANCE WITH THE SURVEY ACT, THE SURVEYORS ACT AND THE REGULATIONS MADE UNDER THEM.
 2. THE SURVEY WAS COMPLETED ON AUGUST 2, 2023.
 AUGUST 25, 2023
 DATE
 SHAWN LEWIS
 ONTARIO LAND SURVEYOR

***INVERT DATA ADDED 2023 09 01
 THIS PLAN OF SURVEY RELATES TO AOLS PLAN SUBMISSION FORM NUMBER V-42231

J.D. BARNES SURVEYING & MAPPING
 LAND INFORMATION SPECIALISTS
 1000 SHEPPARD AVENUE EAST, SUITE 100, SCARBOROUGH, ONTARIO M1S 1W7
 T: (416) 751-7284 F: (416) 751-2849 WWW.JDBARNES.COM

DRAWN BY: CE CHECKED BY: SL REFERENCE NO: 23-10-067-00
 PLOTTED: 8/29/23 DATE: 8/29/23