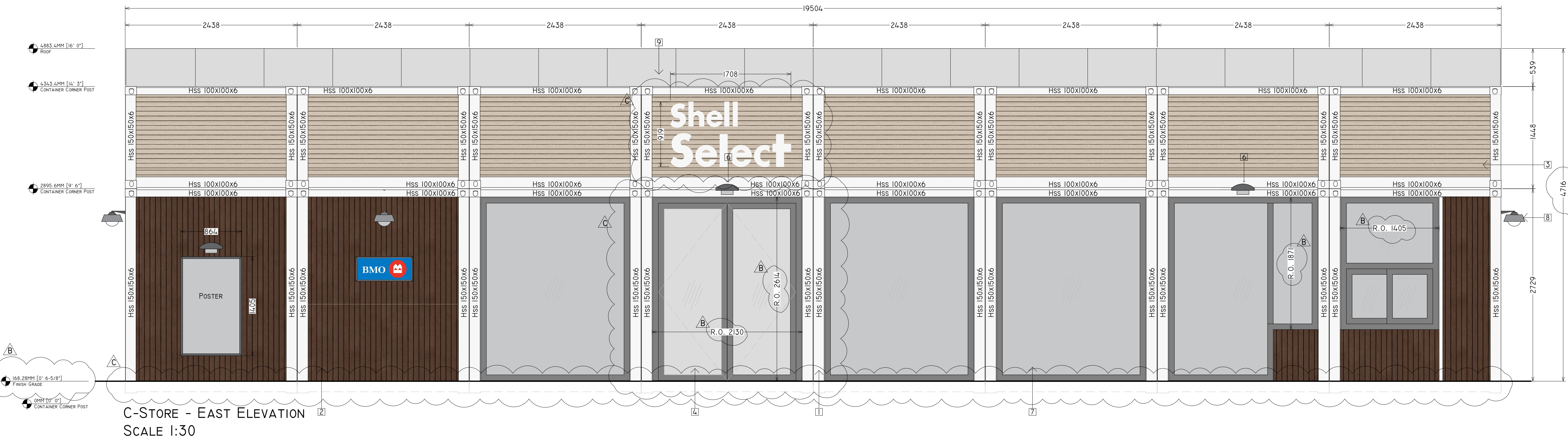


No.	DATE	DESCRIPTION
△	2024-11-27	RESUBMISSION SPC-PHASE 3
△	2024-11-20	RESUBMISSION SPC-PHASE 3 DRAFT
△	2024-08-1	ISSUED FOR SPC-PHASE 3

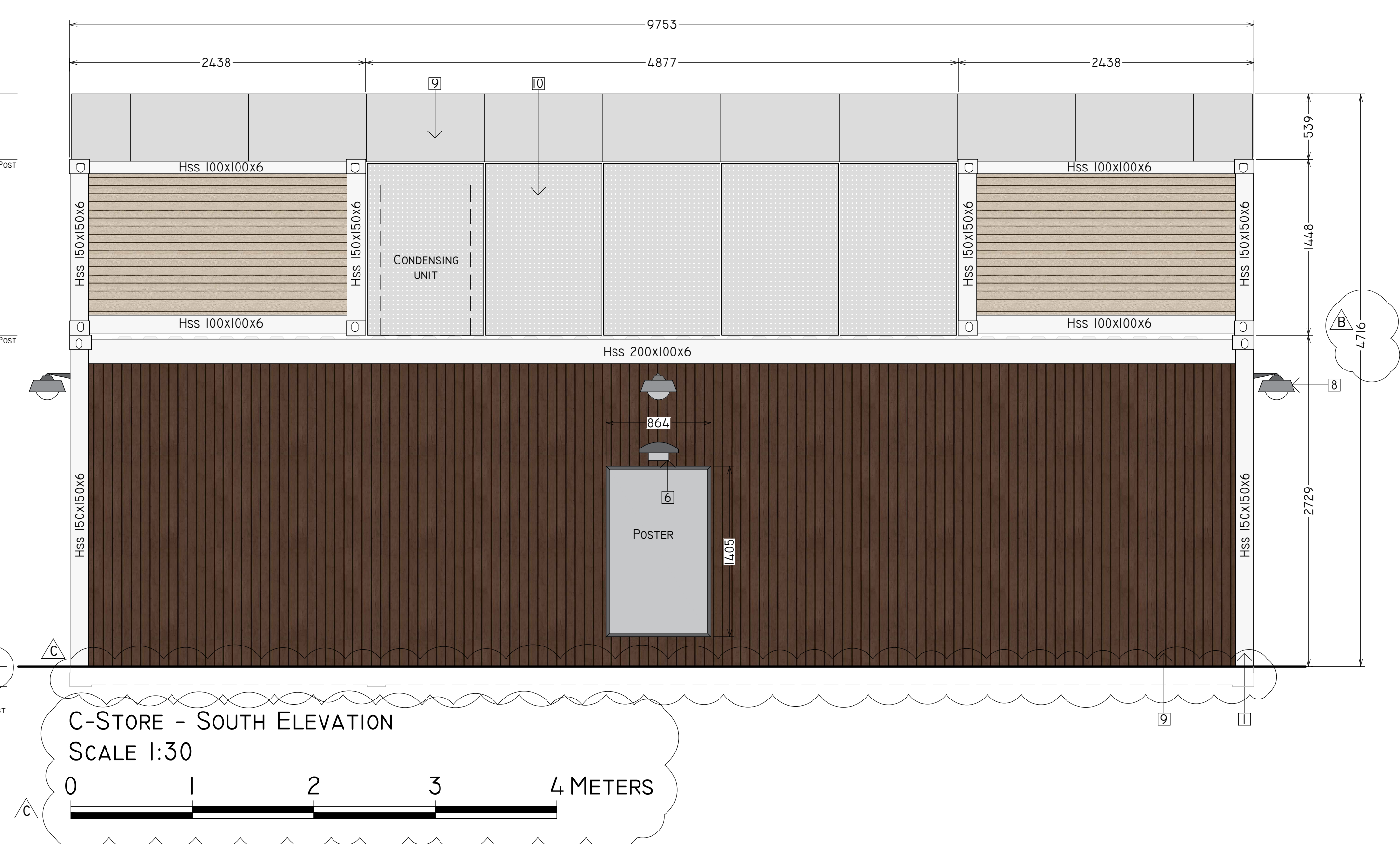
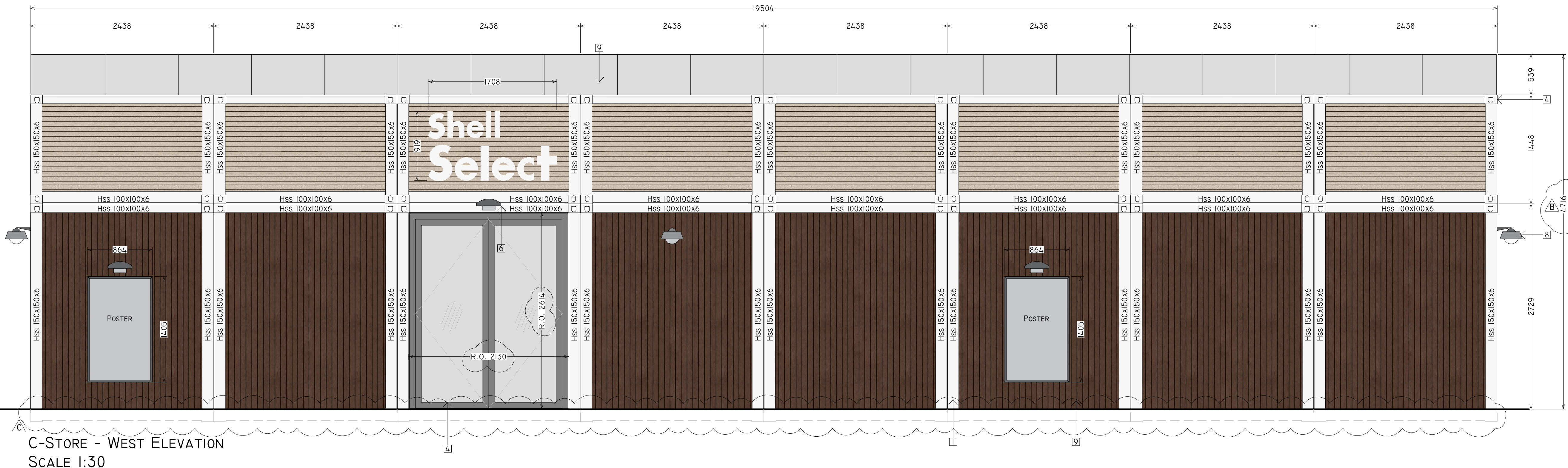


**MATERIAL FINISH TYPES LEGEND**

- STEEL STRUCTURE  
PAINTED SHELL WHITE RGB 255, 255, 255
- ALUMINUM SIDING - LONGBOARD TONGUE & GROOVE  
CLADDING 4" - HORIZONTAL IN NATIONAL WALNUT
- ALUMINUM SIDING - LONGBOARD TONGUE & GROOVE  
CLADDING 4" - HORIZONTAL IN BLONDE OAK
- DOUBLE GLASS DOOR OUTWARD SWING  
2018WX259IH (MM)
- EXTERIOR INSULATED DOOR AND FRAME  
LH REVERSE
- WALL MOUNTED LIGHT FIXTURE
- WINDOW GLAZING
- WALL MOUNTED SECURITY CAMERA
- ALUMINUM SIDING CLADDING IN CLEAR ANODIZED  
FINISH
- PERFORATED ALUMINUM SIDING CLADDING IN CLEAR  
ANODIZED FINISH



No.	DATE	DESCRIPTION
9	2024-11-27	RESUBMISSION SPC-PHASE 3
8	2024-11-20	RESUBMISSION SPC-PHASE 3 DRAFT
7	2024-08-1	ISSUED FOR SPC-PHASE 3



**MATERIAL FINISH TYPES LEGEND**

- STEEL STRUCTURE  
PAINTED SHELL WHITE RGB 255, 255, 255
- ALUMINUM SIDING - LONGBOARD TONGUE & GROOVE  
CLADDING 4" - HORIZONTAL IN NATIONAL WALNUT
- ALUMINUM SIDING - LONGBOARD TONGUE & GROOVE  
CLADDING 4" - HORIZONTAL IN BLONDE OAK
- DOUBLE GLASS DOOR OUTWARD SWING  
2018Wx259IH (MM)
- EXTERIOR INSULATED DOOR AND FRAME  
LH REVERSE
- WALL MOUNTED LIGHT FIXTURE
- WINDOW GLAZING
- WALL MOUNTED SECURITY CAMERA
- ALUMINUM SIDING CLADDING IN CLEAR ANODIZED  
FINISH
- PERFORATED ALUMINUM SIDING CLADDING IN CLEAR  
ANODIZED FINISH