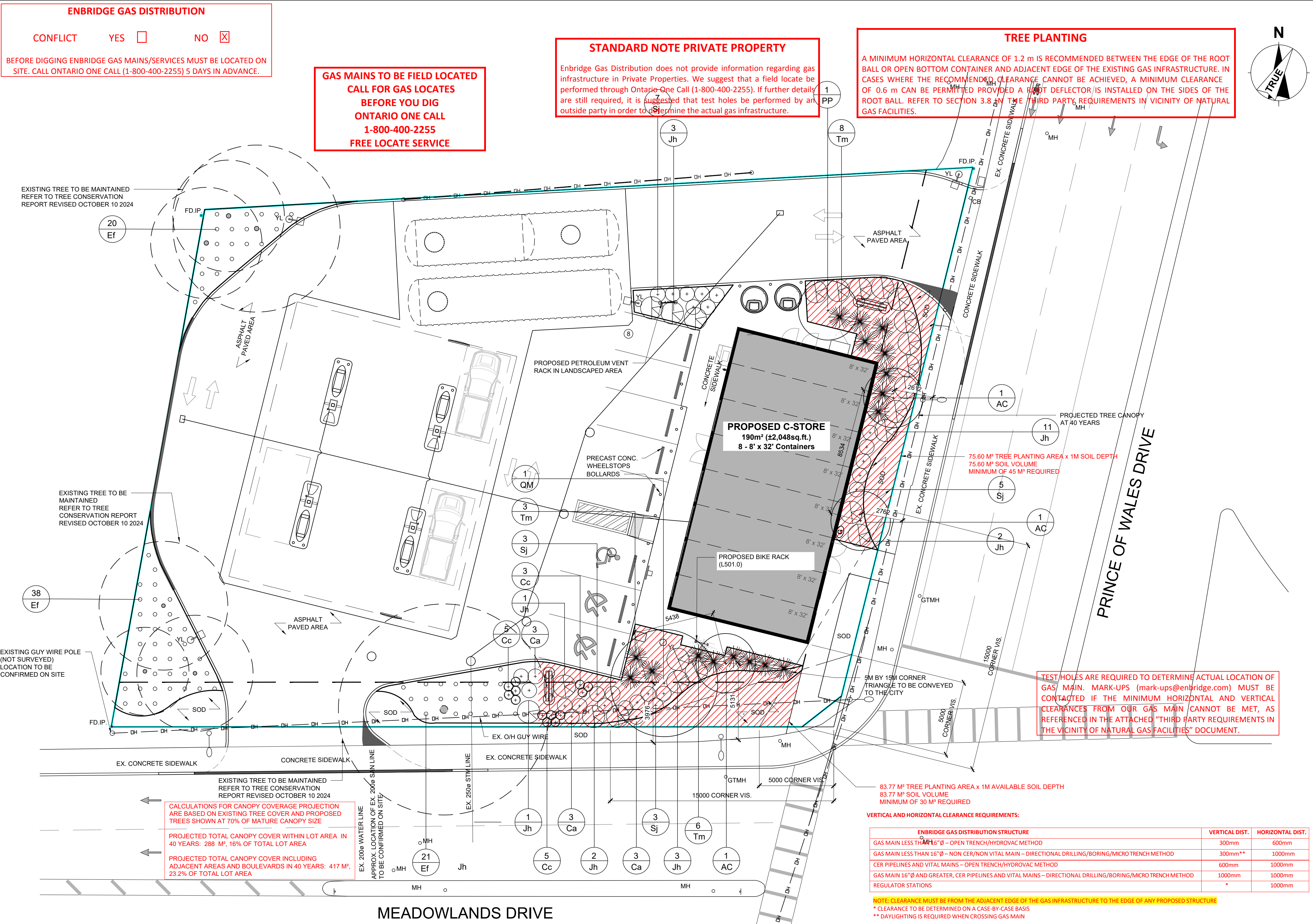
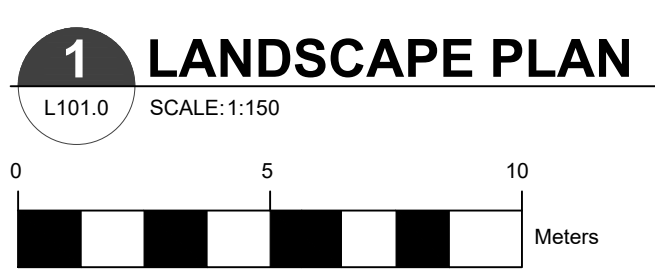


ANSI D 864mm x 559mm
Checked: SF, JL Approved: Designer: SR Project Management Initials:
Last Plotted: SETHR(2025-04-29) File name: 2024072_L101.0_2025.04.23.DWG



Kelby Lodoen Unseth
KELBY LODOEN UNSETH
PLANNER
PLANNING, DEVELOPMENT AND BUILDING SERVICES
DEPARTMENT, CITY OF OTTAWA



- LANDSCAPE NOTES:
- ALL WORK TO BE CARRIED OUT ACCORDING TO THE ONTARIO OCCUPATIONAL HEALTH AND SAFETY ACT REGULATIONS FOR CONSTRUCTION AND INDUSTRIAL PROJECTS AND ALL OTHER APPLICABLE LAWS, RULES AND REGULATIONS.
 - COMPLETE ALL WORK TO THE SATISFACTION OF THE LANDSCAPE ARCHITECT.
 - REPORT ANY CHANGES, DISCREPANCIES OR SUBSTITUTIONS TO THE LANDSCAPE ARCHITECT FOR REVIEW. OBTAIN APPROVAL FROM THE LANDSCAPE ARCHITECT BEFORE PROCEEDING.
 - IT IS THE CONTRACTOR'S RESPONSIBILITY TO DETERMINE EXISTING SERVICE LOCATIONS.
 - EXACT LOCATIONS OF PLANT MATERIAL WILL BE DETERMINED BY LOCATION/PLACEMENT OF SITE SERVICES SUCH AS HYDRO VAULTS, DRIVEWAYS, LIGHT STANDARDS. ETC.
 - SUPPLY ALL PLANT MATERIAL IN ACCORDANCE WITH INDUSTRY STANDARDS FOR NURSERY STOCK.
 - INSTALL PLANT MATERIAL ACCORDING TO DETAILS SHOWN.
 - ALL PLANTING BEDS AROUND TREES AND SHRUBS ARE TO BE COVERED WITH SHREDDED BARK MULCH (2" - 3" INCH DEPTH, MAX.)
 - PROVIDE PLANTING BED AREA AS NOTED ON THE DRAWING OR TO ACCOMMODATE MATURE SIZE OF PLANT MATERIAL.
 - REMOVE POTS FROM ALL POTTED PLANT MATERIAL DURING PLANTING.
 - ALL SUPPORT SYSTEMS MUST BE REMOVED TO THE SATISFACTION OF THE DESIGNER LANDSCAPE ONCE THE TREE IS ESTABLISHED.
 - ALL DIMENSIONS IN METERS UNLESS OTHERWISE NOTED.
 - DRAWINGS ARE NOT TO BE SCALED.
 - IF DISCREPANCIES ARISE BETWEEN PLANT MATERIAL COUNT SHOWN ON DRAWING AND PLANT LIST, THE DRAWING SHALL BE CONSIDERED CORRECT.
 - CONTRACTOR TO PROVIDE MINIMUM 1 YEAR WARRANTY FROM DATE ACCEPTED ON ALL WORK UNLESS OTHERWISE SPECIFIED.
 - DRAWINGS NOT TO BE REPRODUCED WITHOUT WRITTEN CONSENT FROM LANDSCAPE ARCHITECT.

- LANDSCAPE ON MUNICIPAL BOULEVARDS NOTES:
- The applicant will be responsible to acquire the necessary utility stake outs and approvals from the Public Utilities Coordinating Committee (P.U.C.C.) and/or Transportation and Public Works Department prior to the installation of the landscape works on the MUNICIPAL boulevard."
 - "The owner is responsible to give the Transportation and Public Works Department a minimum of five (5) days notice prior to the relocation or removal of the street tree(s)."

LOCATION PLAN

GENERAL NOTES

- ALL WORK CARRIED OUT ON SITE SHALL BE COMPLETED IN ACCORDANCE WITH ALL LOCAL BYLAWS, STANDARDS, REGULATIONS CODES AND ACTS.
- WHERE MUNICIPAL STANDARDS ARE USED THE CONTRACTOR SHALL VERIFY THAT THE CURRENT STANDARDS ARE USED.
- DO NOT SCALE DRAWINGS
- ALL DIMENSIONS ARE IN MILLIMETERS, UNLESS NOTED OTHERWISE.
- ALL DIMENSIONS ARE SUBJECT TO VERIFICATION.
- THIS SITE PLAN WAS CREATED FROM TOPOGRAPHICAL PLAN DRAWING AND DATA PREPARED BY GEOVERRA, DATED JULY 7TH, 2022 AND PROVIDED TO CTM DESIGN SERVICES LTD..
- G.C. TO PROTECT ALL EXISTING UTILITIES DURING CONSTRUCTION, UNLESS PLANS CALL FOR THEIR REMOVAL / MODIFICATION. GAS, HYDRO, TELEPHONE, OR ANY OTHER UTILITY THAT MAY EXIST ON THE SITE OR WITHIN THE STREET LINES MUST BE LOCATED BY THE RESPECTIVE UTILITY AND VERIFIED PRIOR TO CONSTRUCTION. THE CONTRACTOR SHALL CONTACT THE ENGINEER SHOULD SUBSTANTIAL DISCREPANCIES BECOME APPARENT.

LEGEND

PROPERTY LINE / LEASE LINE	YL
YARD LIGHT	SL
STREET LIGHT	TS
TRAFFIC SIGNAL	PP
POWER POLE	MH
MANHOLE	TS
TRAFFIC SIGN	TS
VENT RACK	
EX. OVERHEAD LINE	DH
DIRECTIONAL TRAFFIC ARROW (REPRESENTATIVE, NOT INDICATIVE OF CONSTRUCTION)	
PARKING STALL #	1
GAS METER	G
WATER METER	W
MANHOLE	MH
CATCH BASIN	CB
EXISTING TREE	+
PROPOSED TREE OR SHRUB (SEE PLANT SCHEDULE)	+

ABBREVIATIONS

VENT	V
VENT RECOVERY	VR
REMOTE VENT RECOVERY	RVR
FILL	F
REMOTE FILL	RF
AUTOMATED TANK GAUGE	ATG
INTERSTITIAL MONITOR	IM
SUBMERSIBLE TURBINE PUMP	STP
EXISTING	EX



PROJECT
Shell Canada Products
Prince of Wales and
Meadowlands (KDR)

1440 Prince of Wales Dr
Ottawa, ON K2C 1N6

CLIENT
Shell Canada
400-4th Avenue SW
Calgary, AB T2P 0J4
403.252.4554 tel
www.shell.ca
CONSULTANT

AECOM Canada Ltd
4th Floor, 3292 Production Way
Burnaby, BC V5A 4R4
604.444.6400 tel 604.294.8597 fax
www.aecom.com

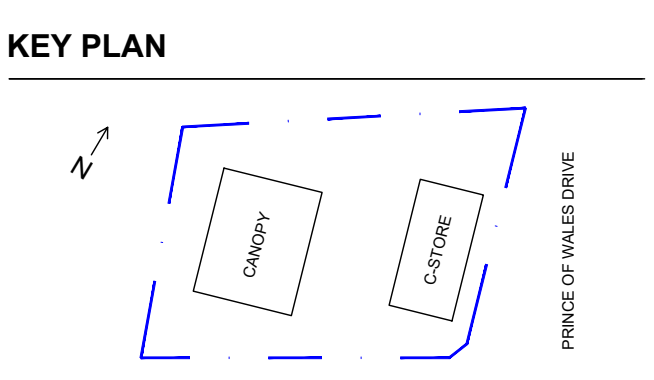
CTM Design Services Ltd.
225, 340 Midpark Way SE
Calgary, AB T2X 1P1
403.640.0990 tel
www.ctmdesign.ca

REGISTRATION



ISSUE/REVISION		
04	2025/04/29	ISSUED FOR SPA REVIEW
03	2025/01/22	ISSUED FOR SPA PHASE 3 REVIEW
02	2024/11/25	ISSUED FOR SPA PHASE 3 REVIEW
01	2024/08/01	ISSUED FOR SPA PHASE 3 REVIEW
IR	DATE	DESCRIPTION

DRAWN BY **SCALE**
SR 1:150



GLOBAL PROJECT ID NUMBER
CAN00650
SHEET TITLE
SITE
LANDSCAPE PLAN

CTM DESIGN FILE NAME
2024072_L101.0_2025.04.23
SHEET NUMBER

L101.0

This drawing has been prepared for the use of AECOM's client and may not be used, reproduced or relied upon by third parties, except as agreed by AECOM and its client, as required by law or for use by governmental reviewing agencies. AECOM accepts no responsibility, and denies any liability whatsoever, to any party that modifies this drawing without AECOM's express written consent. Do not scale this document. All measurements must be obtained from stated dimension.

