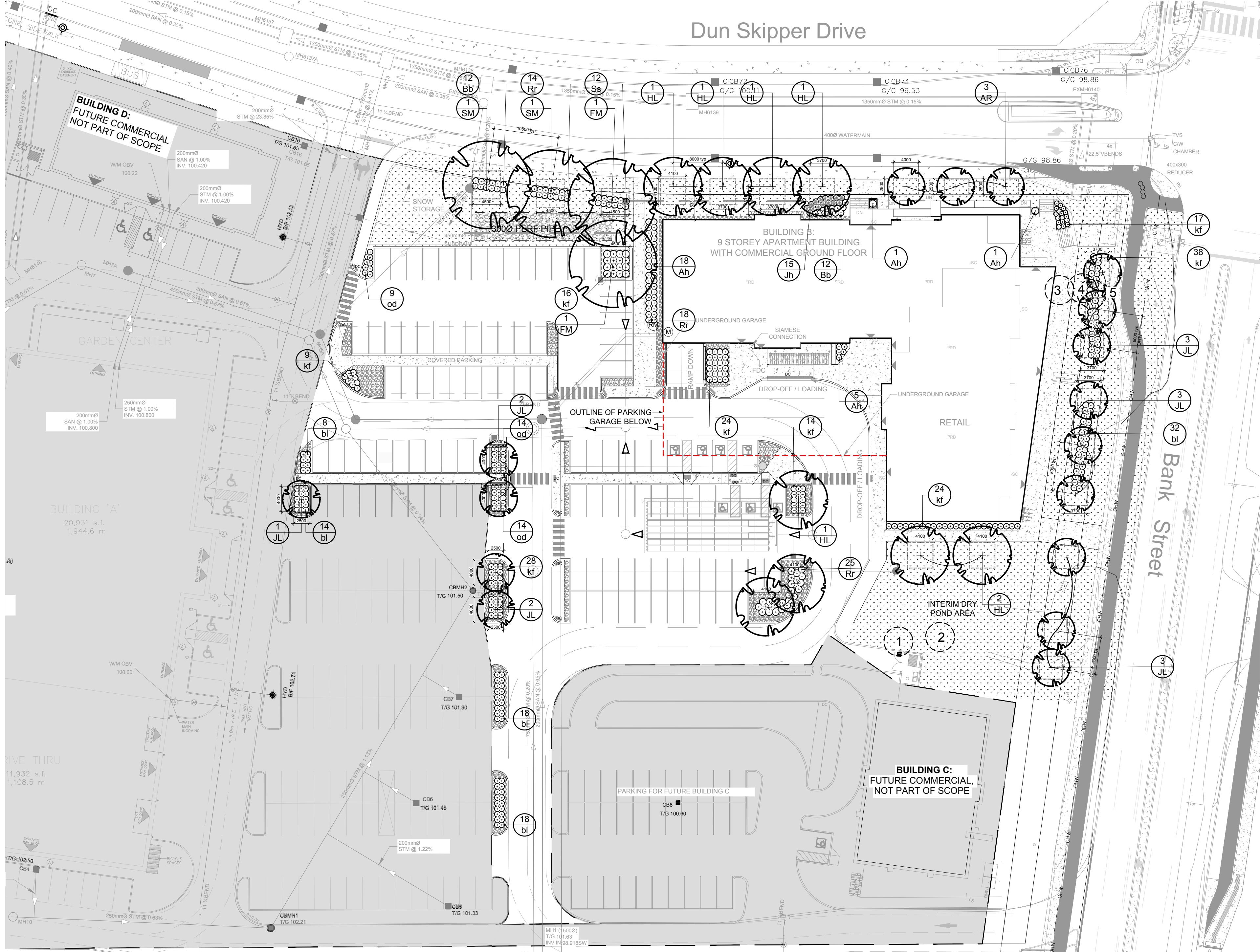




KEY PLAN: NTS



1 TREE CONSERVATION REPORT AND LANDSCAPE PLAN
SCALE: 1:400

KEY	QTY.	BOTANICAL NAME	COMMON NAME	SIZE	CONDITION	REMARKS	OWNERSHIP	COMMENTS
1	1	<i>Populus balsamifera</i>	Balsam Poplar	110mm DBH	GOOD	To be removed	4836 Bank	Growing in swale
2	1	<i>Populus balsamifera</i>	Balsam Poplar	100mm DBH	GOOD	To be removed	4836 Bank	Growing in swale
3	1	<i>Fraxinus spp.</i>	Ash	70mm DBH	GOOD	To be removed	4836 Bank	Growing under hydro wires
4	1	<i>Fraxinus spp.</i>	Ash	110mm DBH	GOOD	To be removed	4836 Bank	Growing under hydro wires
5	1	<i>Fraxinus spp.</i>	Ash	120mm DBH	GOOD	To be removed	4836 Bank	Growing under hydro wires

GENERAL NOTES:

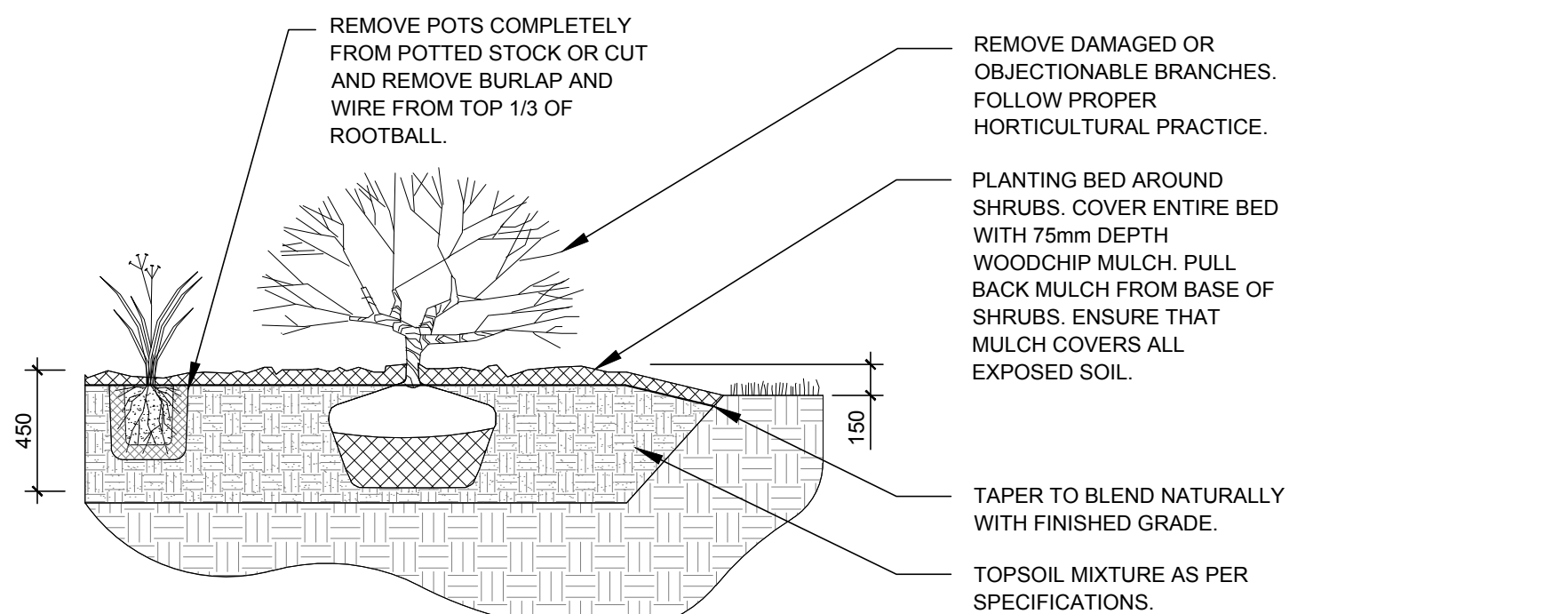
- IT IS THE RESPONSIBILITY OF THE APPROPRIATE CONTRACTOR OR OFFICIAL TO REPORT ANY ERRORS, OMISSIONS OR DISCREPANCIES ON THIS PLAN WITH ACTUAL SITE CONDITIONS TO THE LANDSCAPE ARCHITECT BEFORE PROCEEDING WITH CONSTRUCTION.
- THE CONTRACTOR IS TO NOTIFY ALL UTILITY COMPANIES AND AUTHORITIES PRIOR TO ANY EXCAVATION AND ASCERTAIN LOCATIONS OF UNDERGROUND SERVICES.
- THE CONTRACTOR IS TO REINSTATE ALL AREAS AND ITEMS DAMAGED AS A RESULT OF CONSTRUCTION ACTIVITY.
- THE CONTRACTOR IS TO COMPLY WITH ALL PERTINENT CODES AND BY-LAWS.
- THE CONTRACTOR IS TO MAINTAIN A POSITIVE SURFACE RUN-OFF THROUGHOUT THE ENTIRE CONSTRUCTION PERIOD.
- THE LANDSCAPE ARCHITECT IS NOT RESPONSIBLE FOR SUBSURFACE CONDITIONS.
- THE CONTRACTOR IS TO IDENTIFY ALL EXISTING TREES TO REMAIN ON SITE WITH THE LANDSCAPE ARCHITECT PRIOR TO CONSTRUCTION.
- THE CONTRACTOR IS TO STAKE THE PROPOSED LOCATION OF ALL PLANT MATERIAL IN CONJUNCTION WITH THE LANDSCAPE ARCHITECT PRIOR TO EXCAVATION.
- MINIMUM DISTANCES FOR SELECTED DECIDUOUS TREES ARE AS FOLLOWS:
 - BUILDING FOUNDATIONS - 7.5M
 - SIDEWALKS - 1.5M
 - PUBLIC STREETS - 2.5M
 - UNDERGROUND INFRASTRUCTURE - 2.0M
- ALL TREES WITHIN 1M OF UNDERGROUND UTILITY TRENCHES ARE TO BE EXCAVATED BY HAND.
- REMOVE ALL PROTECTIVE WRAPPING FROM TREE TRUNKS AFTER INSTALLATION.
- STAKING OF TREES SHALL ONLY BE PERFORMED IF NECESSARY.
- ENSURE THAT MULCH IS PULLED BACK A MINIMUM DISTANCE OF 75MM FROM BASE OF TREE TRUNK.

PART OF LOT 22 CONCESSION 4
(RIDEAU FRONT)
Geographic Township of Gloucester
CITY OF OTTAWA

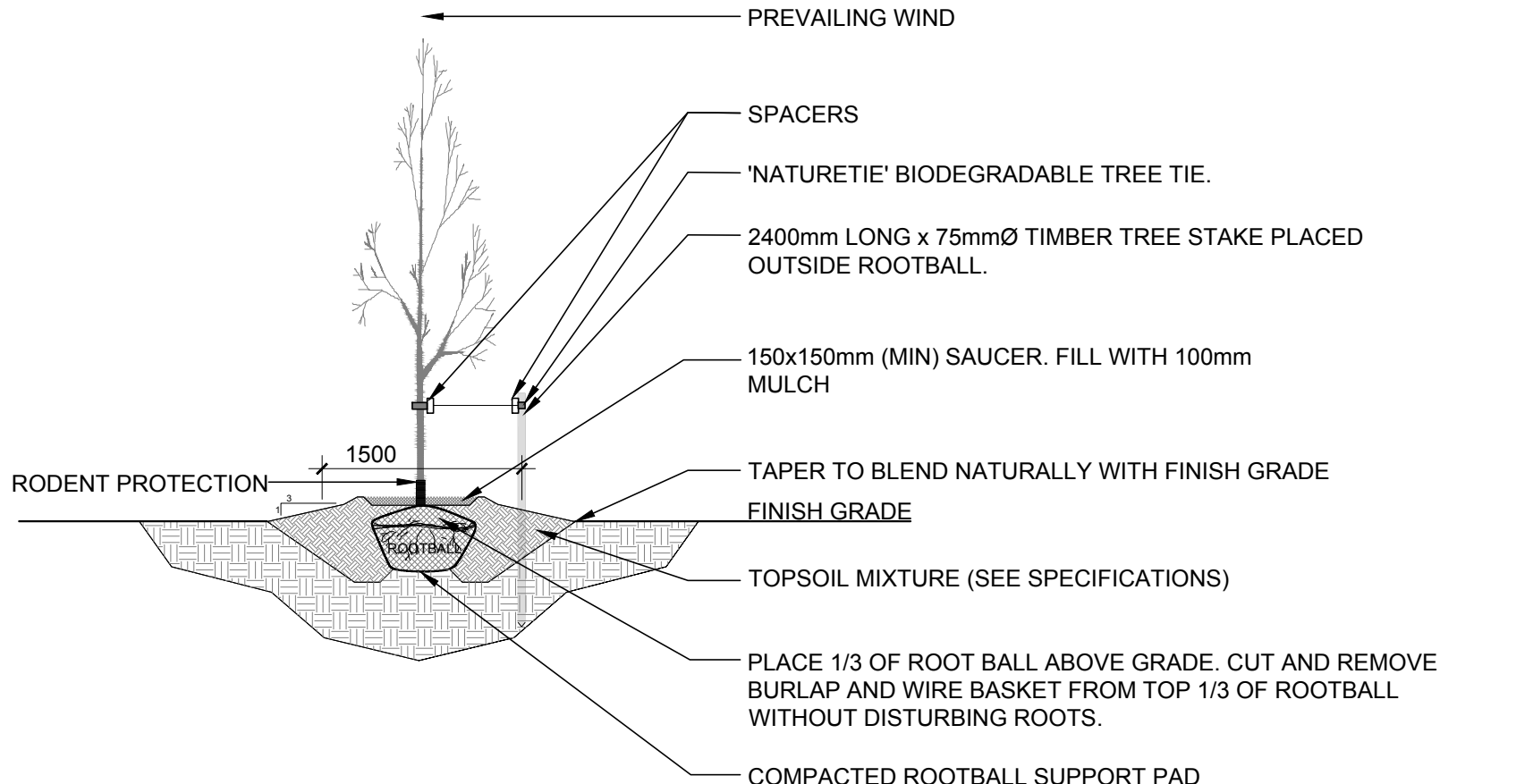
PROPOSED PLANT LIST

KEY	QTY.	BOTANICAL NAME	COMMON NAME	SIZE	CONDITION	REMARKS	SIZE CLASS
TREES							
AR	3	<i>Acer x freemanii</i> 'Armstrong'	Armstrong Maple	50mm ø	B&B		Columnar
FM	2	<i>Acer x freemanii</i> 'Compactus'	Freeman's Maple	50mm ø	B&B		Large
HL	6	<i>Gleditsia tricanthos</i> 'Draves'	Street Keeper Honey Locust	50mm ø	B&B		Medium
JL	14	<i>Syringa reticulata</i>	Japanese Tree Lilac	50mm ø	B&B		Small
SM	2	<i>Acer saccharum</i>	Sugar Maple	1800 mm ht.	B&B		Large
SHRUBS							
Ah	25	<i>Hydrangea arborescens</i> 'Annabelle'	Annabelle Hydrangea	3 gal. pot	Potted		1000 mm o.c.
Bb	24	<i>Eunonymus alatus</i> 'Compactus'	Dwarf Burning Bush	600mm ht.	Potted		1000 mm o.c.
Jh	15	<i>Juniperus horizontalis</i> 'Bar Harbor'	Bar Harbor Juniper	600 mm spr.	Potted		1000 mm o.c.
Rr	57	<i>Rosa rugosa</i>	Rugosa Rose	800mm ht.	Potted		1000 mm o.c.
Ss	12	<i>Sorbaria sorbifolia</i> 'Sem'	Sem False Spirea	600mm ht.	Potted		1000 mm o.c.
ORNAMENTAL GRASSES							
bl	90	<i>Leymus arenarius</i> 'Blue Dune'	Blue Lyme Grass	250mm pot	Potted		800 mm o.c.
kf	146	<i>Calamagrostis acutiflora</i> 'Karl Foerster'	Feather Reed Grass	250mm pot	Potted		800 mm o.c.
od	37	<i>Calamagrostis acutiflora</i> 'Overdam'	Overdam Grass	250mm pot	Potted		800 mm o.c.

NOTE: All trees proposed on private property unless otherwise noted in remarks. * indicates native species. Proposed trees, shrubs and ornamental grasses has taken Transport Canada, Safety and Security and Aerodrome safety branch's "Ornamental Trees and shrubs attractive to birds" list into consideration which has an impact on small native tree selection.



2 SHRUB / ORNAMENTAL GRASS PLANTING
SCALE: NTS



3 DECIDUOUS TREE PLANTING
SCALE: NTS

40 YEAR CANOPY CALCULATION:

-7,739 m2 site area for this phase

- 4 large trees proposed (154m2 ea), 8 medium trees proposed (79m2 ea.) and 17 small and columnar trees proposed (7m2 ea)

=1,288m2 canopy cover = 16.6% canopy cover

*Large deciduous tree calculated at 14m spread, medium tree calculated at 10m spread, small and columnar deciduous trees calculated at 3m spread

CLIENT
OMKAR ATWAL
4836 Bank Street K1X 1G6, Ottawa ON
613-822-0760

CONSULTANTS
ARCHITECTS:
Alexander Wilson Architect Inc
Admiralty Place
103-20 Gore Street
Kingston Ontario, K7L 2L1
t: 613.545.3744 ext 213
f: 613.545.1411

CIVIL ENGINEERS:
ARCADIS
333 Preston St Suite 500, Ottawa, ON K1S 5N4
613-721-0555

SURVEYORS:
ANNIS, O'SULLIVAN, VOLLEBEKK LTD.
P.O. Box 579, 225 rue Industriel
Embrun, Ontario, K0A 1W0
Phone: (815) 443-3364 / Fax: (815) 443-3229
Email: Embrun@annis.com

LEGEND

- PROPOSED DECIDUOUS TREE
- REQUIRED SOIL VOLUME (20m3 FOR SMALL TREE, 25m3 FOR MEDIUM TREE, 30m3 FOR LARGE TREE AT A 1.5m DEPTH)
- PROPOSED SHRUBS / ORNAMENTAL GRASSES
- PROPOSED SOD
- PROPOSED RIVERSTONE MULCH
- EXISTING TREE TO REMAIN
- EXISTING TREE TO BE REMOVED

6	REVISED PER CITY COMMENTS	09/26/2025	ML	JL
5	REVISED PER CITY COMMENTS	08/19/2025	ML	JL
4	REVISED PER CITY COMMENTS	04/25/2025	ML	JL
3	REVISED PER CITY COMMENTS	02/26/2025	ML	JL
2	REVISED PER CITY COMMENTS	02/20/2025	ML	JL
1	ISSUED FOR SITE PLAN CONTROL	11/29/2024	ML	JL
No.	Issue	Date	ML	DR CK

JAMES B. LENNOX & ASSOCIATES INC.
LANDSCAPE ARCHITECTS
3332 CARLING AVE. OTTAWA, ONTARIO K2H 5A8
Tel. (613) 722-5168 Fax. (866) 343-3942

PROJECT
9-STOUREY MIXED USE BUILDING
4836 BANK STREET, OTTAWA ON

DRAWING
TREE CONSERVATION REPORT AND LANDSCAPE PLAN

STAMP
ASSOCIATION OF LANDSCAPE ARCHITECTS OF ONTARIO
MEMBER

SCALE
AS SHOWN

START DATE
SEPTEMBER 2024

PROJECT NO.
24MIS2457

PROJECT NORTH

DRAWING NO.
L.1

PILOT SIZE ARCH-D