

SKETCH ILLUSTRATING PROPOSED BUILDING CLEARANCE TO OUTER SURFACE (ELEVATION 151.79 METRES)

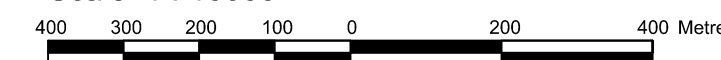
Ottawa Macdonald-Cartier Airport Zoning Regulations SOR/2009-231 Amended on July 8, 2010

" 4836 BANK STREET "

CITY OF OTTAWA

Prepared by Annis, O'Sullivan, Vollebek Ltd.
October 6, 2025

Scale 1 : 10000



Metric

DISTANCES SHOWN ON THIS PLAN ARE IN METRES AND CAN BE CONVERTED TO FEET BY DIVIDING BY 0.3048

Notes & Legend

Denotes	
ARP	AERODROME REFERENCE POINT
AZR	AERODROME TRAFFIC ZONE
FFE	MAIN FLOOR - FINISHED FLOOR ELEVATION

Coordinates are derived from Can-Net 2016 Real Time Network GPS observations referenced to Specified Control Points 01919791338 and 01919871649, MTM Zone 9 (76°30' West Longitude) NAD-83 (original).

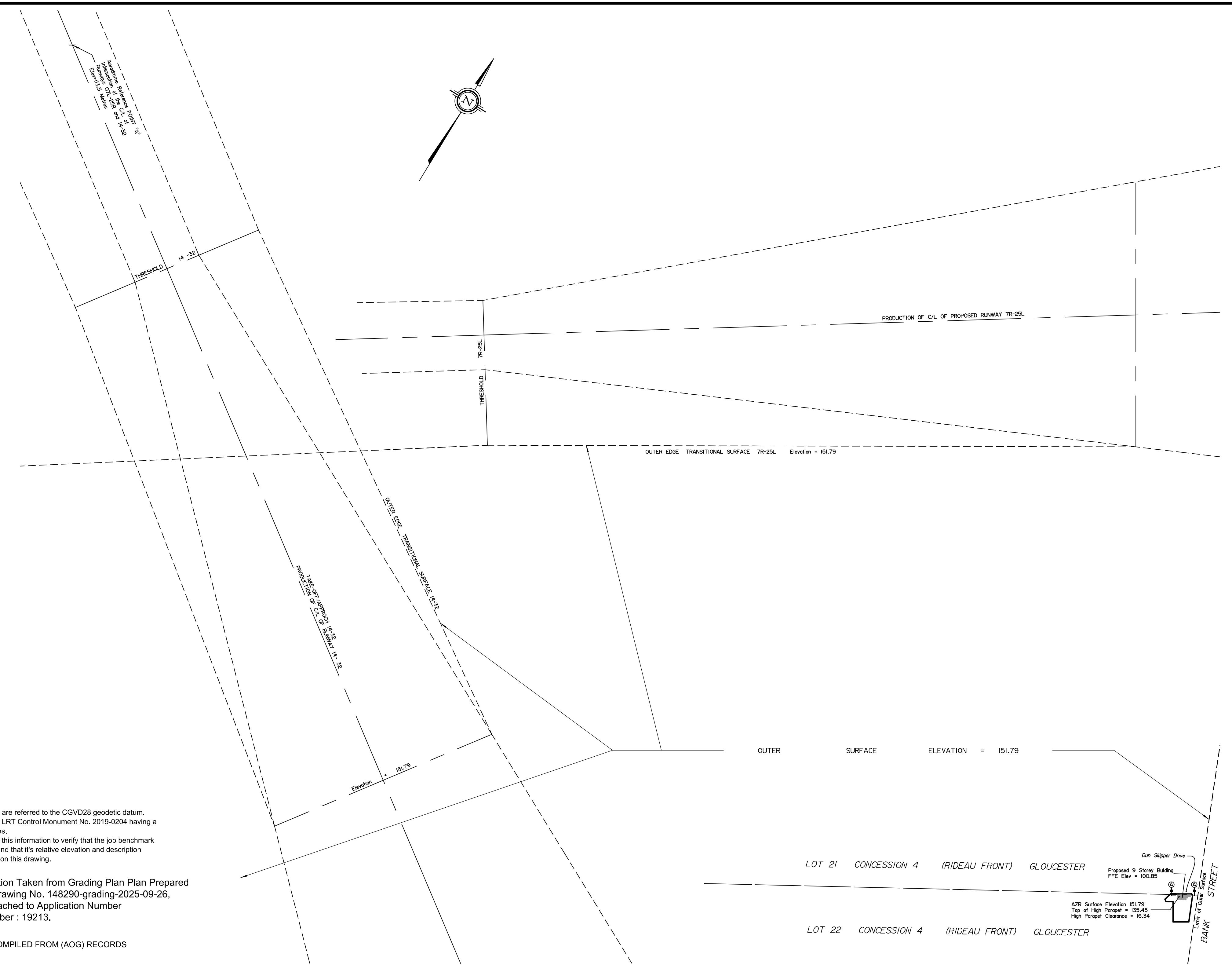
Coordinate values are to urban accuracy in accordance with O. Reg. 216/10.

.01919791338	Northing	5006055.96	Easting	346140.91
.01919871649	Northing	5007189.87	Easting	372435.05

Caution: Coordinates cannot, in themselves, be used to re-establish corners or boundaries shown on this plan.

Caution

This is NOT a Plan of Survey and shall not be used except for the purpose indicated in the title block.



ELEVATION NOTES

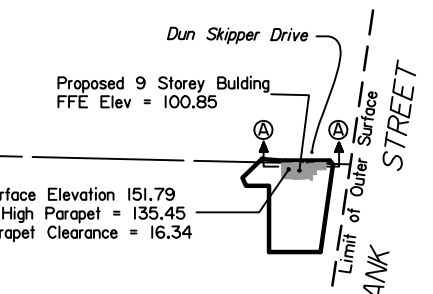
- Elevations shown are geodetic and are referred to the CGVD28 geodetic datum. Elevations are derived from Ottawa LRT Control Monument No. 2019-0204 having a published elevation of 92.735 metres.
- It is the responsibility of the user of this information to verify that the job benchmark has not been altered or disturbed and that its relative elevation and description agrees with the information shown on this drawing.

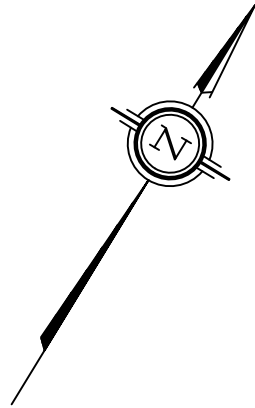
Proposed Building Information Taken from Grading Plan Prepared Arcadis Ottawa Autocad Drawing No. 148290-grading-2025-09-26, And Elevation Drawing Attached to Application Number D07-12-24-0169 Plan Number : 19213.

BOUNDARY INFORMATION COMPILED FROM (AOG) RECORDS

LOT 21 CONCESSION 4 (RIDEAU FRONT) GLOUCESTER

LOT 22 CONCESSION 4 (RIDEAU FRONT) GLOUCESTER





SHEET 2 OF 2 - South Elevations

SKETCH ILLUSTRATING PROPOSED BUILDING CLEARANCE TO OUTER SURFACE (ELEVATION 151.79 METRES)

Ottawa Macdonald-Cartier Airport Zoning Regulations SOR/2009-231 Amended on July 8, 2010

" 4836 BANK STREET "

CITY OF OTTAWA

Prepared by Annis, O'Sullivan, Vollebek Ltd.

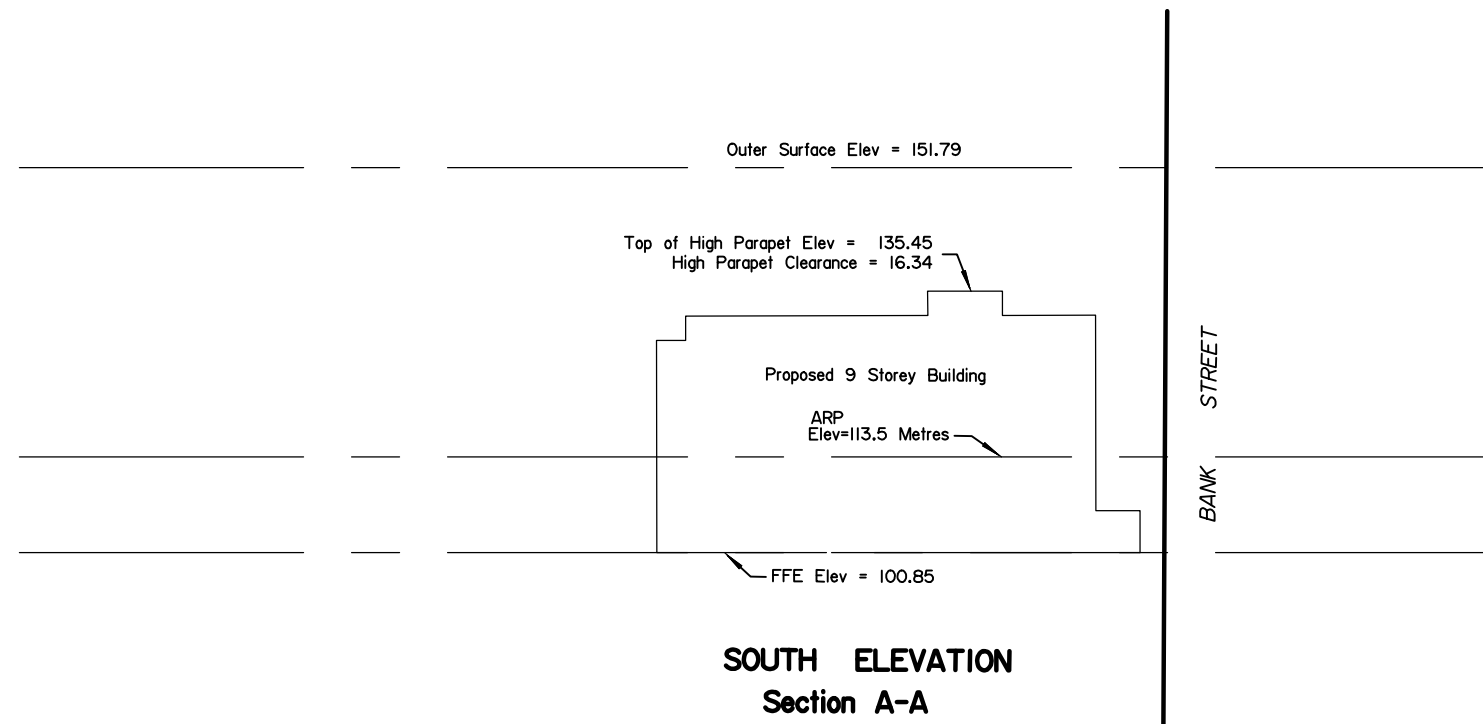
October 7, 2025

Scale 1 : 1000



Metric

DISTANCES SHOWN ON THIS PLAN ARE IN METRES AND CAN BE CONVERTED TO FEET BY DIVIDING BY 0.3048



Notes & Legend

Denotes

ARP	"	AERODROME REFERENCE POINT
AZR	"	AERODROME TRAFFIC ZONE
FFE	"	MAIN FLOOR - FINISHED FLOOR ELEVATION

Caution

This is NOT a Plan of Survey and shall not be used except for the purpose indicated in the title block.

ELEVATION NOTES

- Elevations shown are geodetic and are referred to the CGVD28 geodetic datum. Elevations are derived from Ottawa LRT Control Monument No. 2019-0204 having a published elevation of 92.735 metres.
- It is the responsibility of the user of this information to verify that the job benchmark has not been altered or disturbed and that its relative elevation and description agrees with the information shown on this drawing.

Proposed Building Information Taken from Grading Plan Plan Prepared Arcadis Ottawa Autocad Drawing No. 148290-grading-2025-09-26, And Elevation Drawing Attached to Application Number D07-12-24-0169 Plan Number : 19213.

© Annis, O'Sullivan, Vollebek Ltd, 2025. "THIS SKETCH IS PROTECTED BY COPYRIGHT"

ANNIS, O'SULLIVAN, VOLLEBEKK LTD.
 14 Concourse Gate, Suite 500
 Nepean, Ont. K2E 7S6
 Phone: (613) 727-0850 / Fax: (613) 727-1079
 Email: Nepean@aovltd.com

Ontario Land Surveyors Job No. 24484-24 Clearance SK DI Client FS