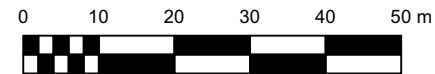


NOTE:
ASH TREE IN DECLINE TO BE REMOVED
FROM THE SITE. (#118)

1
TCR 1

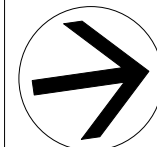
MAP 1
Scale: 1:1000



- EXISTING TREES TO BE PRESERVED
- EXISTING TREES TO BE REMOVED AND REPLACED ELSEWHERE
- TRANSPLANTED TREE
- PROPOSED PLANTING

Ruhland & Associates Ltd
landscape architecture • urban design • site planning
Ph 613-224-4744 Fx 613-224-1131 info@rala.ca www.rala.ca

project
EAST URBAN CENTRE ELEMENTARY SCHOOL
OCDSB 700 Spring Valley Drive, Ottawa, ON



drawing

EXISTING VEGETATION PLAN

date

2025 04 07

scale

1:1000

drawn by

D.A.

checked by

M.R.

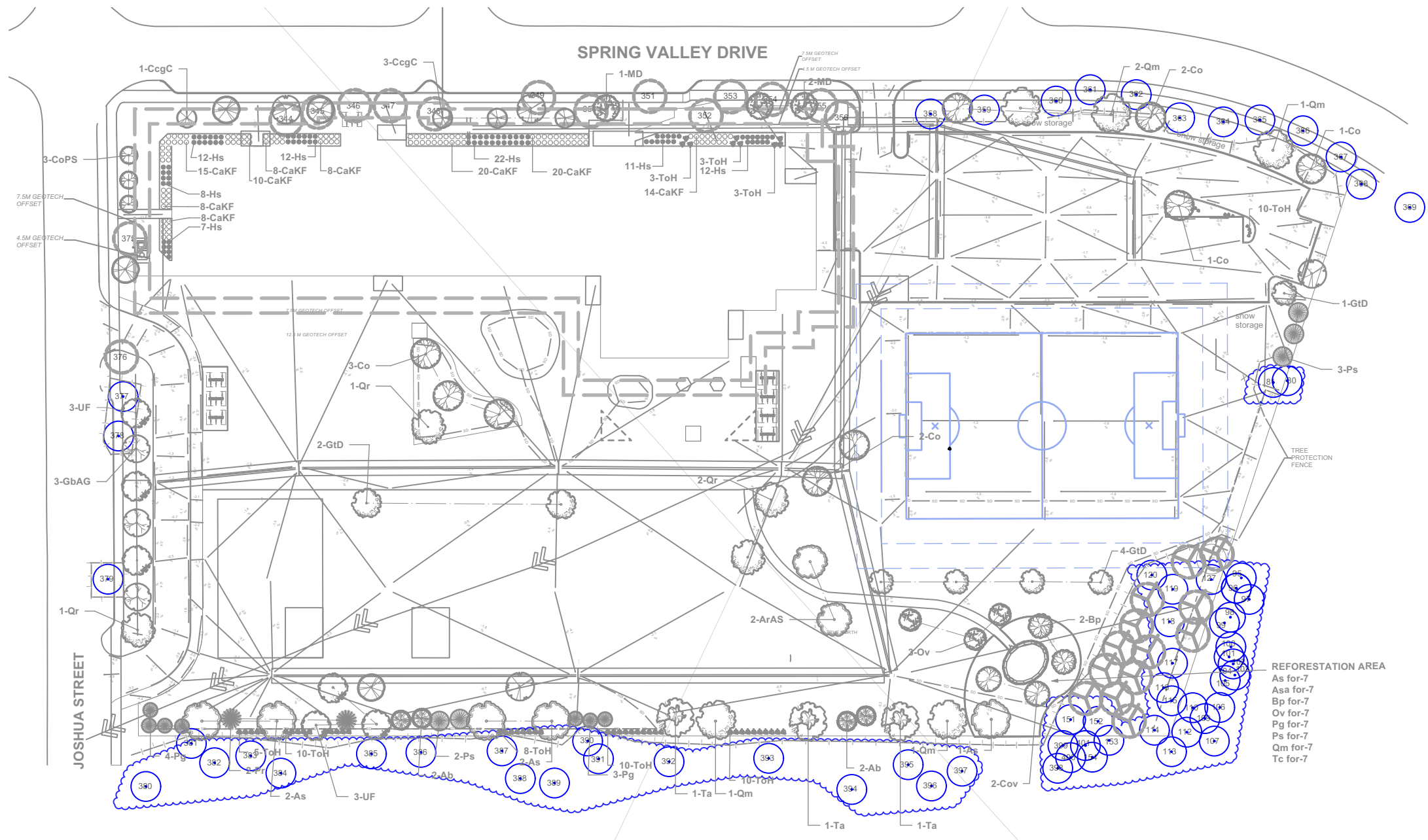
project no.

24-1743

revision no.

dwg. no.

TCR 1



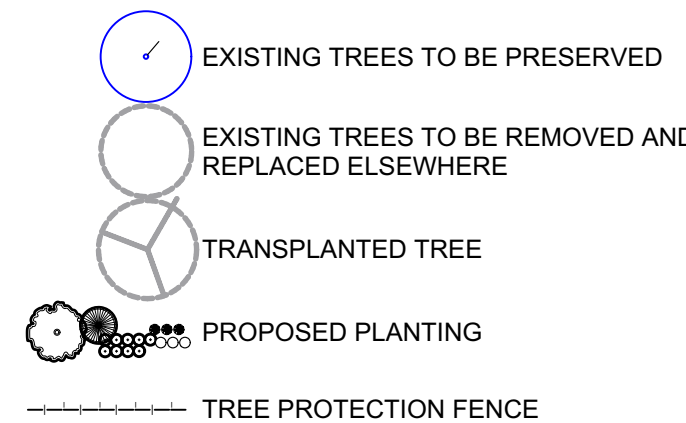
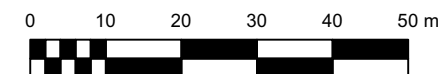
NOTE:
TRANSPLANTING OF TREES TO BE COMPLETED AT THE PROJECT STARTUP, IDEALLY IN FALL.


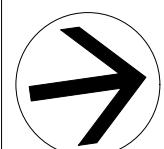
BASE CONTRACT: ASSUME ALL THE TREES CAN BE TRANSPLANTED WITHIN THE CONTRACT. IF NOT THEN A MEDIUM TO LARGE NATIVE DECIDUOUS TREE (70CM CALIPER) FROM THE PLANT LIST SHOULD BE PLANTED INSTEAD.

SITE SERVICING ELEMENTS SHOWN ON THIS SHEET ARE FOR REFERENCE ONLY. SEE CIVIL DRAWINGS FOR SITE SERVICING / GRADING.

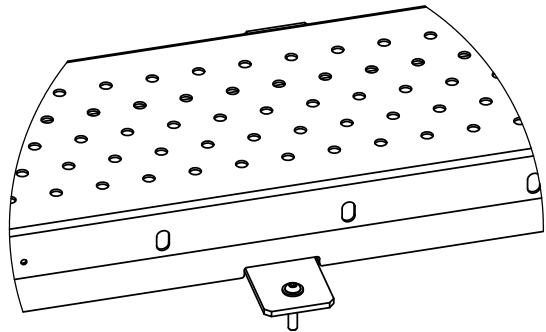
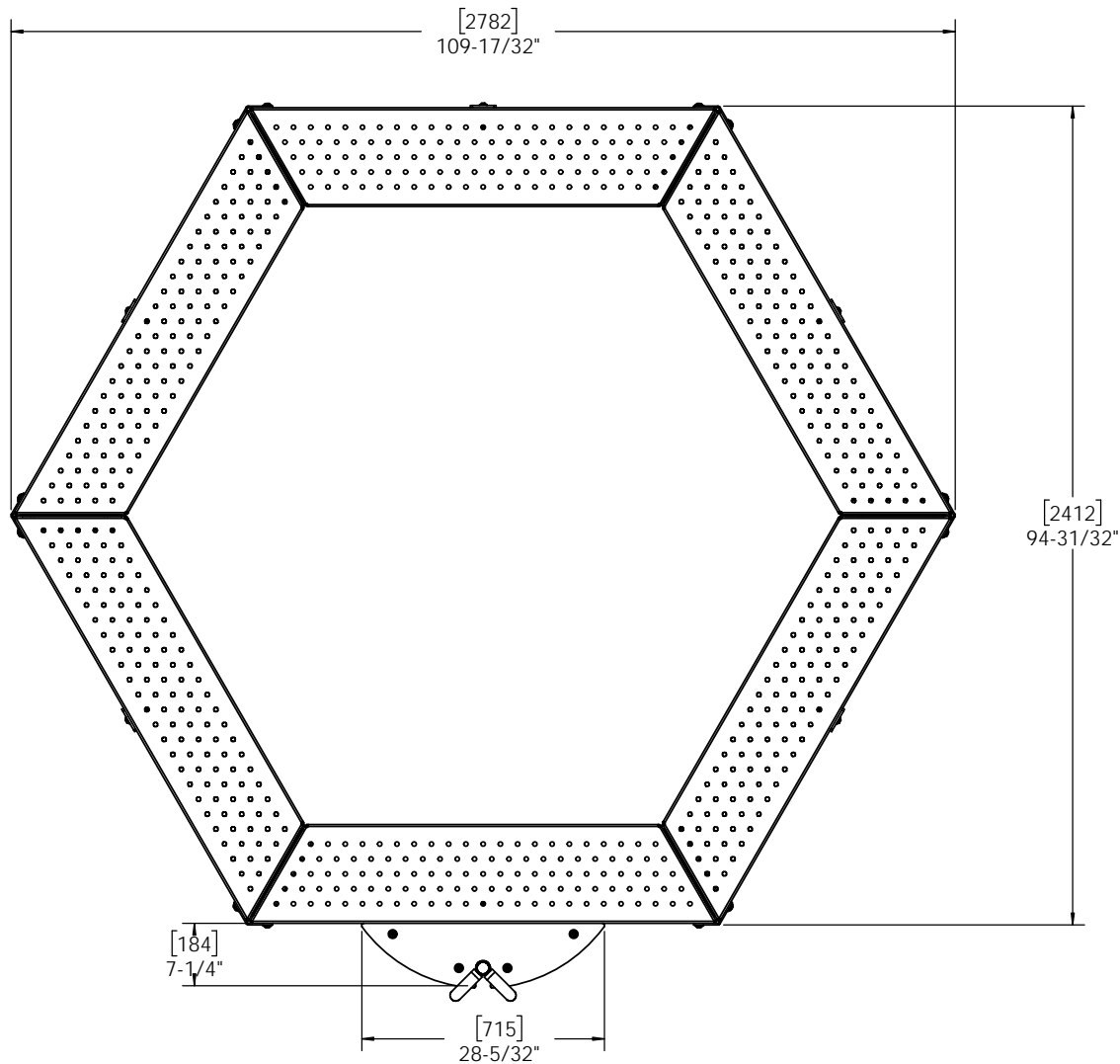
1
TCR 2

MAP 2
Scale: 1:1000

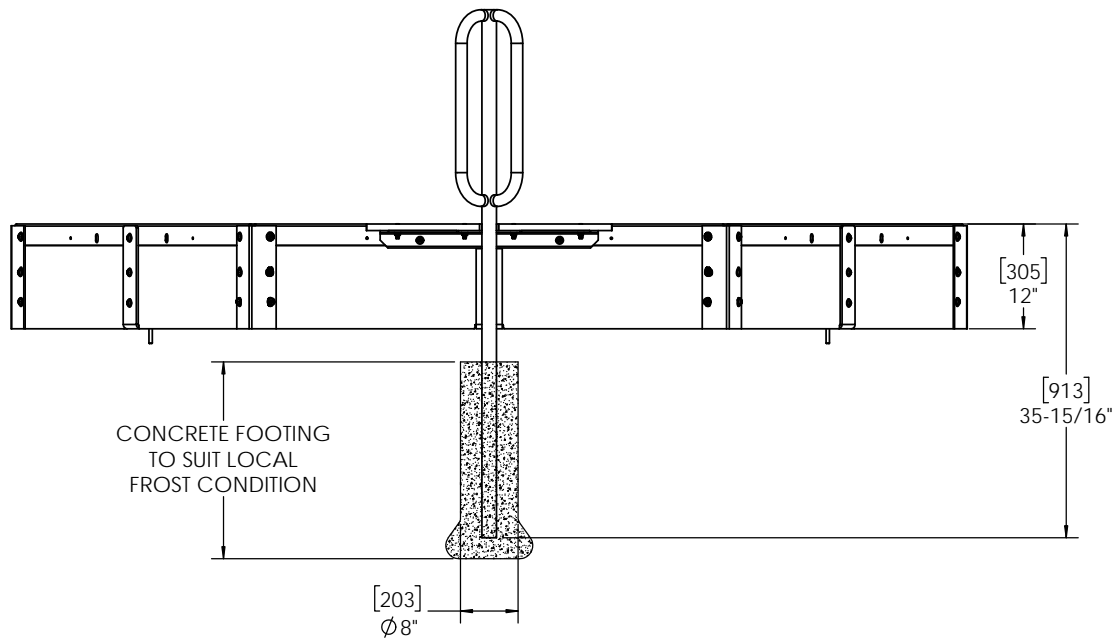
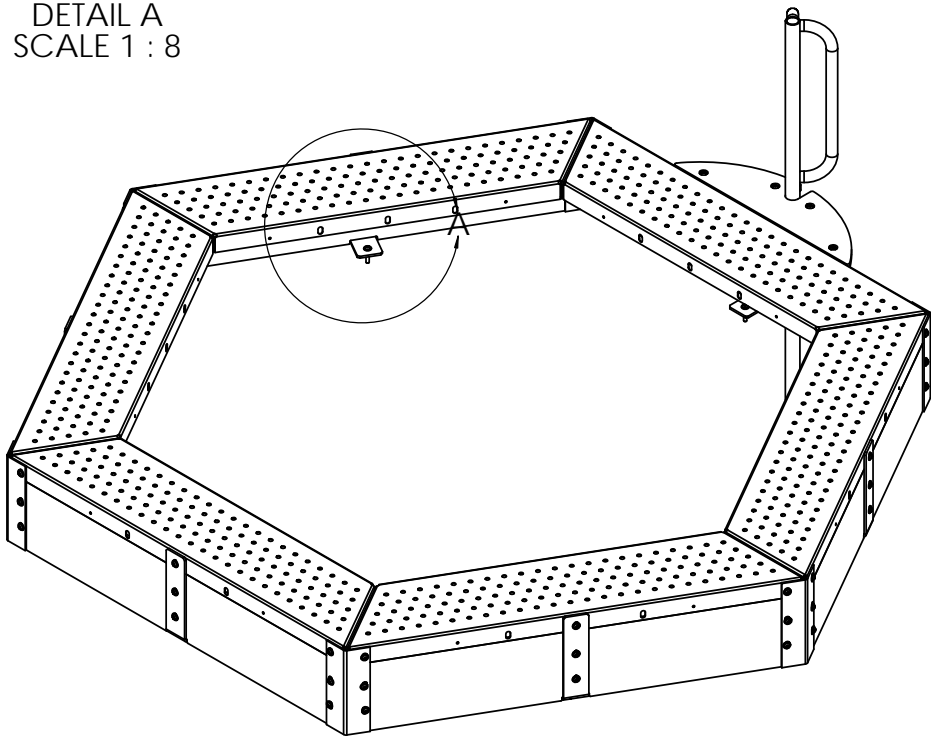



 Ruhland & Associates Ltd landscape architecture • urban design • site planning Ph 613-224-4744 Fx 613-224-1131 info@rala.ca www.rala.ca		project EAST URBAN CENTRE ELEMENTARY SCHOOL OCDSB 700 Spring Valley Drive, Ottawa, ON		drawing TREE CONSERVATION PLAN			
				date 2025 04 07	drawn by D.A.	project no. 24-1743	dwg. no. TCR 2
				scale 1:1000	checked by M.R.	revision no.	

Rev.	Revision Details:	Rev. Date:	Rev. By:



DETAIL A
SCALE 1 : 8



DWG.#		ACCESSIBLE HEX SANDBOX C/W TRANSFER POINT PA-SA001			
Drawn:2/26/2018	W.C.				
Check:5/21/2019	W.C.				
Appr.:					
Issued:		Size: B	Product:#	Rev. 0	
 <div>P.O. BOX 68 11 GILBERTSON DRIVE SIMCOE, ONT.CAN.N3Y 4K8 FAX:(519)-426-1132</div>		Scale: 1:22			
		Tolerance: ±1/16			
		This Drawing Is Not To be Copied Or Reproduced In Any Way Without The Prior Written Consent Of Henderson Recreation Equipment Limited.			Sheet 1
		HREL 10/2016			