

**LEGEND**

- PROPERTY LINE
- PROPOSED CHAINLINK FENCE
- PROPOSED C.I.P. CONCRETE
- PROPOSED ASPHALT
- PROPOSED SOD
- PROPOSED STONEDUST PATH
- PREPOSED EWF
- PROPOSED REFORESTATION AREA

EXISTING TREES TO BE PRESERVED  
EXISTING TREES TO BE TRANSPLANTED  
TRANSPLANTED TREE  
PROPOSED PLANTING  
TREE PROTECTION FENCE (TPF)

Plant List					
Origin	ID	Qty	Botanical Name	Common Name	Scheduled Si
28 LARGE DECIDUOUS TREES					
Niv	As	5	Acer saccharum	Sugar Maple	70mm caliper
Niv	Co	5	Celtis occidentalis	Common Hackberry	60mm caliper
Niv	Cov	2	Carya ovata	Shagbark Hickory	60mm caliper
Non Niv	GbAG	3	Ginkgo biloba 'Autumn Gold'	Autumn Gold Maidenhair Tree	70mm caliper
Niv	Qm	5	Quercus macrocarpa	Burr Oak	70mm caliper
Niv	Qr	4	Quercus rubra	Northern Red Oak	70mm caliper
12 LARGE COLUMNAR DECIDUOUS TREES					
Niv	ArAS	2	Acer rubrum 'Autumn Spire'	Autumn Spire Red Maple	60mm caliper
Niv	CoPS	3	Celtis occidentalis 'Prairie Sentinel'	Prairie Sentinel Hackberry	70mm caliper
Niv	GID	7	Gleditsia triacanthos inermis 'Draves'	Streetkeeper Honeylocust	70mm caliper
29 MEDIUM DECIDUOUS TREES					
Niv	Ag	5	Asclepias glabra	Ohio Buckeye	50mm caliper
Niv	Bp	2	Betula papyrifera	Paper Birch	60mm caliper
Non Niv	MD	3	Malus 'Doig'	Malus Doig	60mm caliper
Niv	Ov	6	Ostrya virginiana	Ironwood	50mm caliper
Niv	Sd	4	Sorbus Americana	Mountain Ash	45mm caliper
Niv	Ta	3	Tilia americana	Basswood	70mm cal.
Non Niv	UF	6	Ulmus minor x parvifolia 'Frontier'	Frontier Elm	70mm caliper
5 SMALL DECIDUOUS TREES					
Niv	CgC	5	Crataegus crus-galli inermis 'Cruzam'	Thornless Crusader Cockspur Hawthorn	45mm caliper
18 CONIFEROUS TREES					
Niv	Ab	4	Abies balsamea	Balsam Fir	200 cm ht
Niv	Pg	7	Picea glauca	White Spruce	200 cm ht
Niv	Pr	2	Pinus resinosa	Red Pine	200cm ht
Niv	Ps	5	Pinus strobus	Eastern White Pine	200 cm ht.

TREES UNDER CITY OWNERSHIP = 17, UNDER PRIVATE OWNERSHIP = 75

Shrubs			
ToH	60	Thuja occidentalis 'Holmstrup'	Holmstrup Cedar
Perennials	18	Helictotroch sempervirens	Ornamental Oats
CaKF	120	Calamagrostis x acutiflora 'Karl Foerster'	Feather Reed Grass

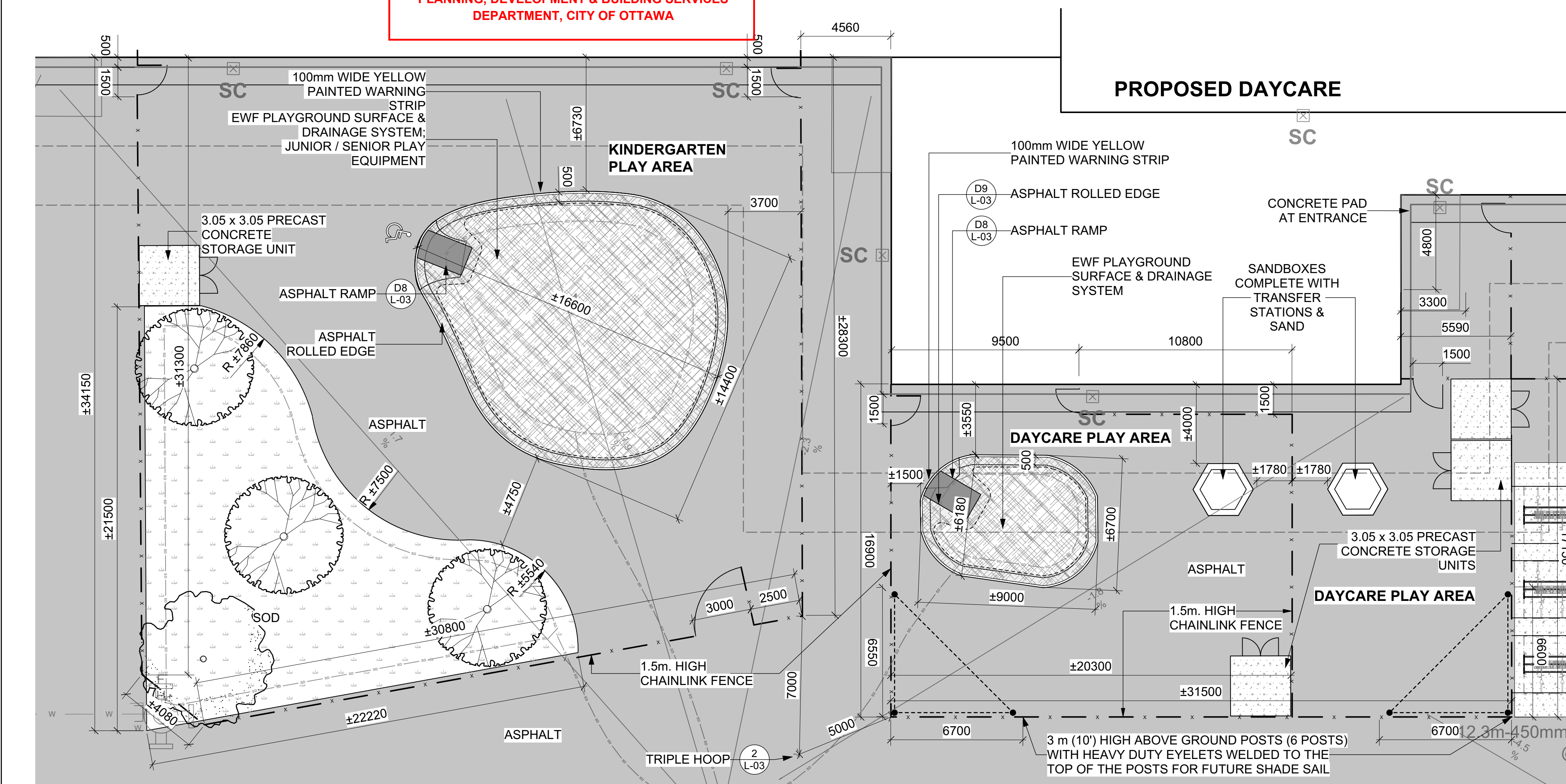
**NOTE:**  
SITE SERVICING ELEMENTS SHOWN ON THIS SHEET ARE FOR REFERENCE ONLY. SEE CIVIL DRAWINGS FOR SITE SERVICING / GRADING.  
  
PLAN TO BE READ IN CONJUNCTION WITH 'TREE CONSERVATION REPORT FOR 700 SPRING VALLEY, OTTAWA ON' APRIL 08, 2025 BY Andrew K. Boyd, Certified Arborist #ON-0496A, IFS Associates.

**TRANSPLANTING & REFORESTATION NOTES**  
TRANSPLANTING OF TREES TO BE COMPLETED AT THE PROJECT STARTUP, IDEALLY IN FALL.  
  
BASE CONTRACT: ASSUME ALL THE TREES CAN BE TRANSPLANTED. IF NOT THEN A MEDIUM TO LARGE NATIVE DECIDUOUS TREE (70CM CALIPER) FROM THE PLANT LIST SHOULD BE PLANTED INSTEAD.

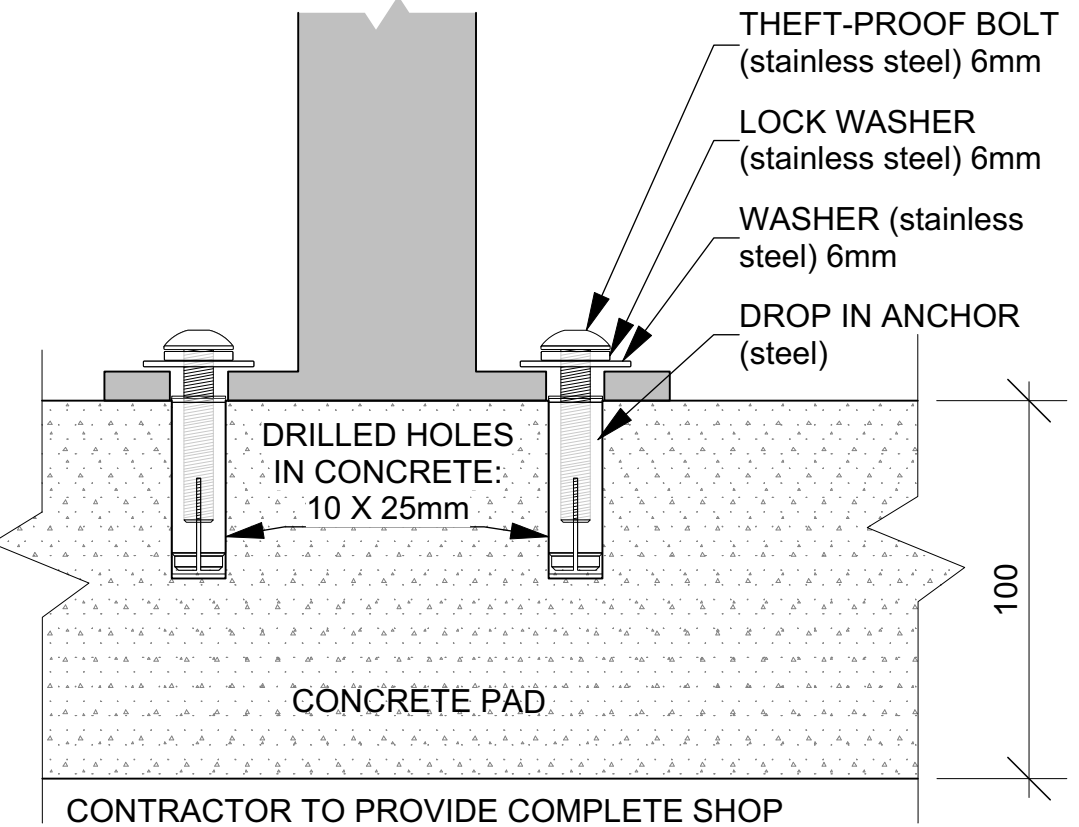
1 LANDSCAPE PLAN  
Scale: 1:400

APPROVED  
By Allison Hamlin at 3:52 pm, Apr 22, 2025

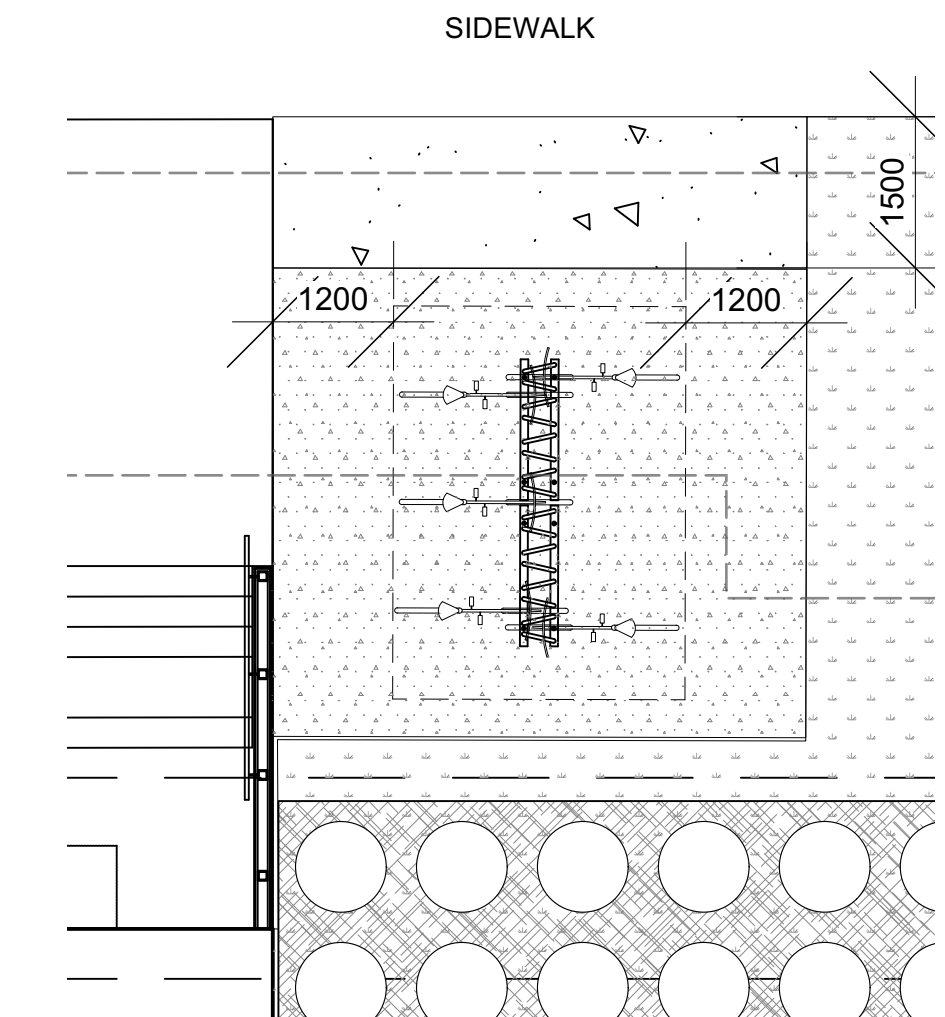
ALLISON HAMLIN  
MANAGER, DEVELOPMENT REVIEW ALL WARDS  
PLANNING, DEVELOPMENT & BUILDING SERVICES  
DEPARTMENT, CITY OF OTTAWA



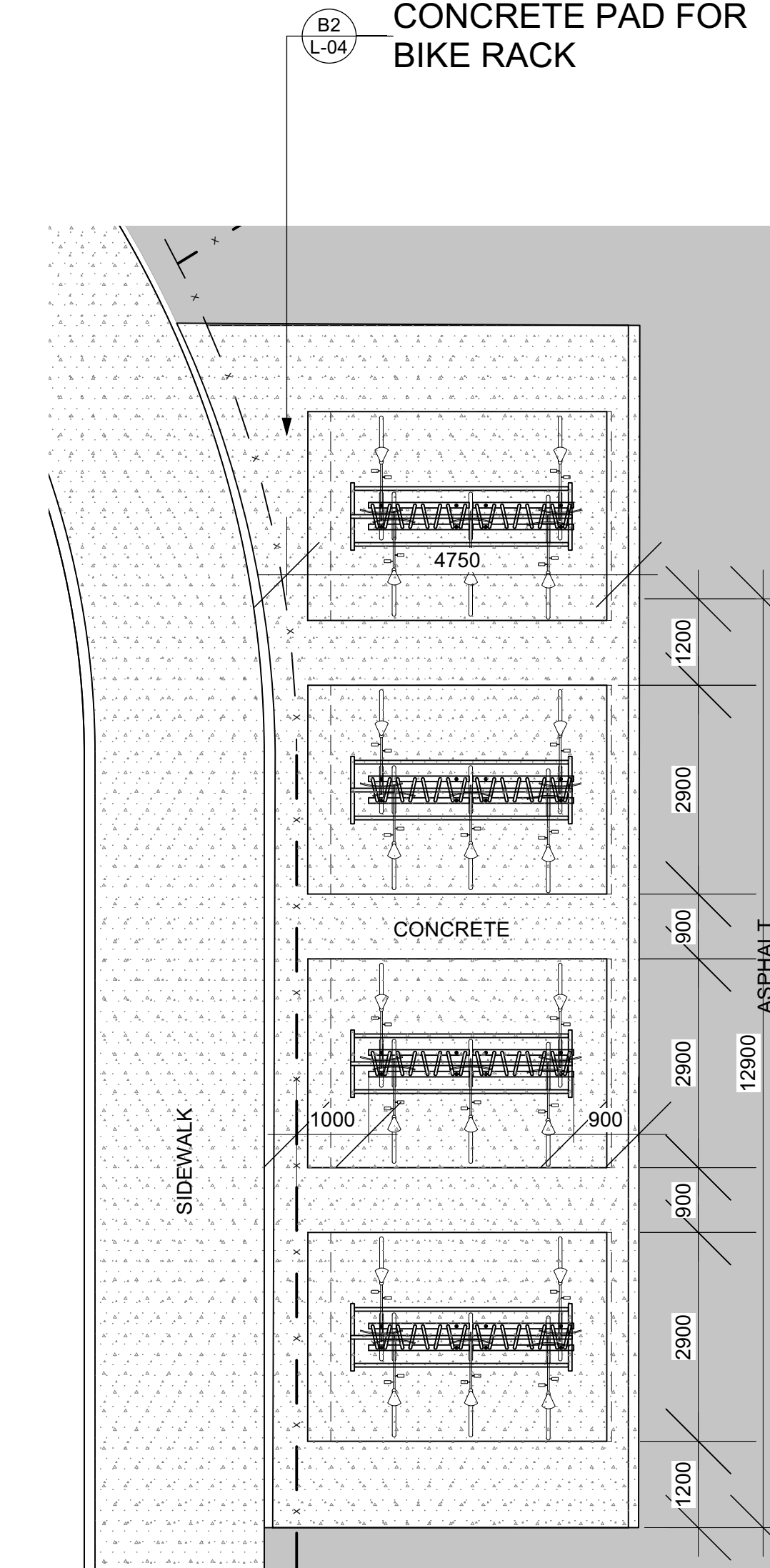
2 ENLARGEMENT - KINDERGARTEN & DAYCARE PLAY AREA  
Scale: 1:150



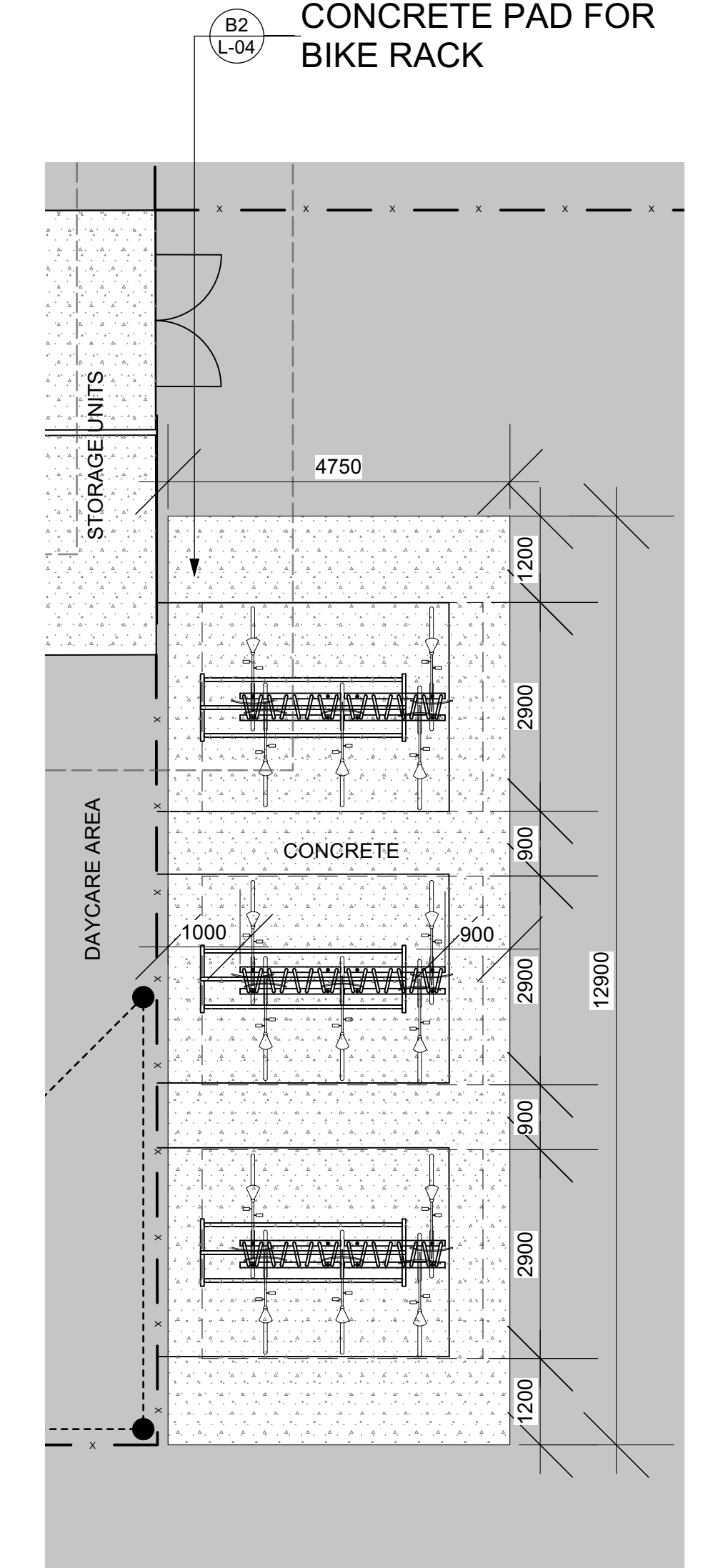
B1 BIKE RACK ANCHORING  
Scale: NTS



EN-1 ENLARGEMENT - BIKE RACK 1  
Scale: NTS  
4 BIKE RACKS - EQUIPARC EP5911-7, 30 BIKES



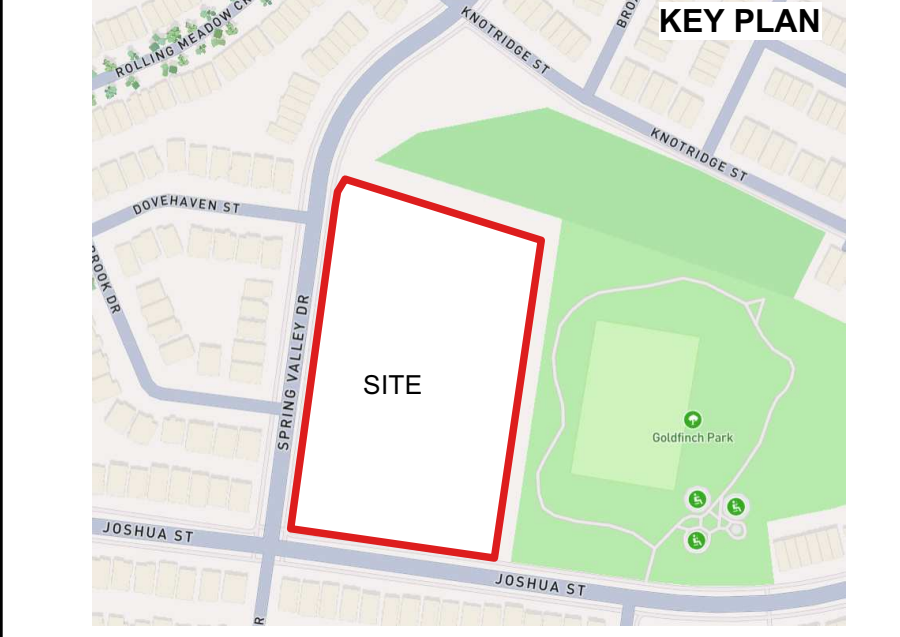
EN-2 ENLARGEMENT - BIKE RACK 2  
Scale: NTS  
6 BIKE RACKS - EQUIPARC EP5911-7, 45 BIKES



EN-3 ENLARGEMENT - BIKE RACK 3  
Scale: NTS  
6 BIKE RACKS - EQUIPARC EP5911-7, 45 BIKES



- GENERAL NOTES**
- All general site information and conditions compiled from existing plans, surveys and consultant's field notes. Report all discrepancies prior to any work. No responsibility is born by the Consultant for unknown subsurface conditions.
  - The location of the utilities is approximate only, and the exact location should be determined by consulting the municipal authorities and utility companies concerned. The Contractor shall prove the location of utilities and shall be responsible for adequate protection from damage.
  - All dimensions shown are to be verified on site prior to any construction. No deviations are to be made from the layouts as shown on this plan without prior consultation with the Landscape Architect and Owner.
  - Obtain approval of Landscape Architect for granular base and layout of all pavement areas prior to construction.
  - Stake planting locations and receive approval of Landscape Architect, prior to excavation of any planting pits. No substitutions of plant material shall be made without prior approval of the Landscape Architect.
  - Where clay is encountered proper drainage must be ensured in tree/shrub pits, prior to planting. Have method approved by Landscape Architect.
  - All sodded areas to receive a minimum of 150mm of topsoil over graded sub-base. If sod with mesh is used, mesh to be removed completely during sodding operations. Sod shall come from an approved source and shall be laid within 24 hours of being cut in the nursery. Only nursery sod shall be used.
  - Final subgrade is to be approved by the Landscape Architect prior to sod being laid.
  - Maintain positive surface runoff through the entire construction period.
  - Reinstate all areas and items damaged as a result of construction activities.

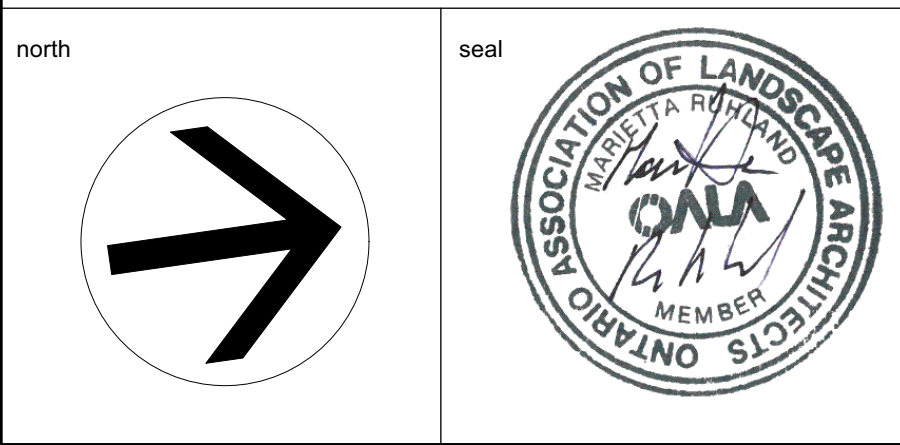


no.	revision	date
06		
05		
04		
03	Reissued for SPC	2025/04/14
02	Issued for Permit	2025/02/04
01	Issued for Coordination	2025/01/30

**N45 ARCHITECTURE INC.**  
71 Bank Street, 7th Floor - Ottawa, Ontario, K1P 5N2  
tel. 613.224.0095 fax 613.224.9811

**Ruhland & Associates Ltd**  
landscape architecture • urban design • site planning  
Ph: 613-224-4244 Fx: 613-224-4331 info@rala.ca www.rala.ca

**East Urban Centre Elementary School**  
700 Spring Valley Dr.  
Ottawa, ON, K1W 0H2.



**LANDSCAPE PLAN**

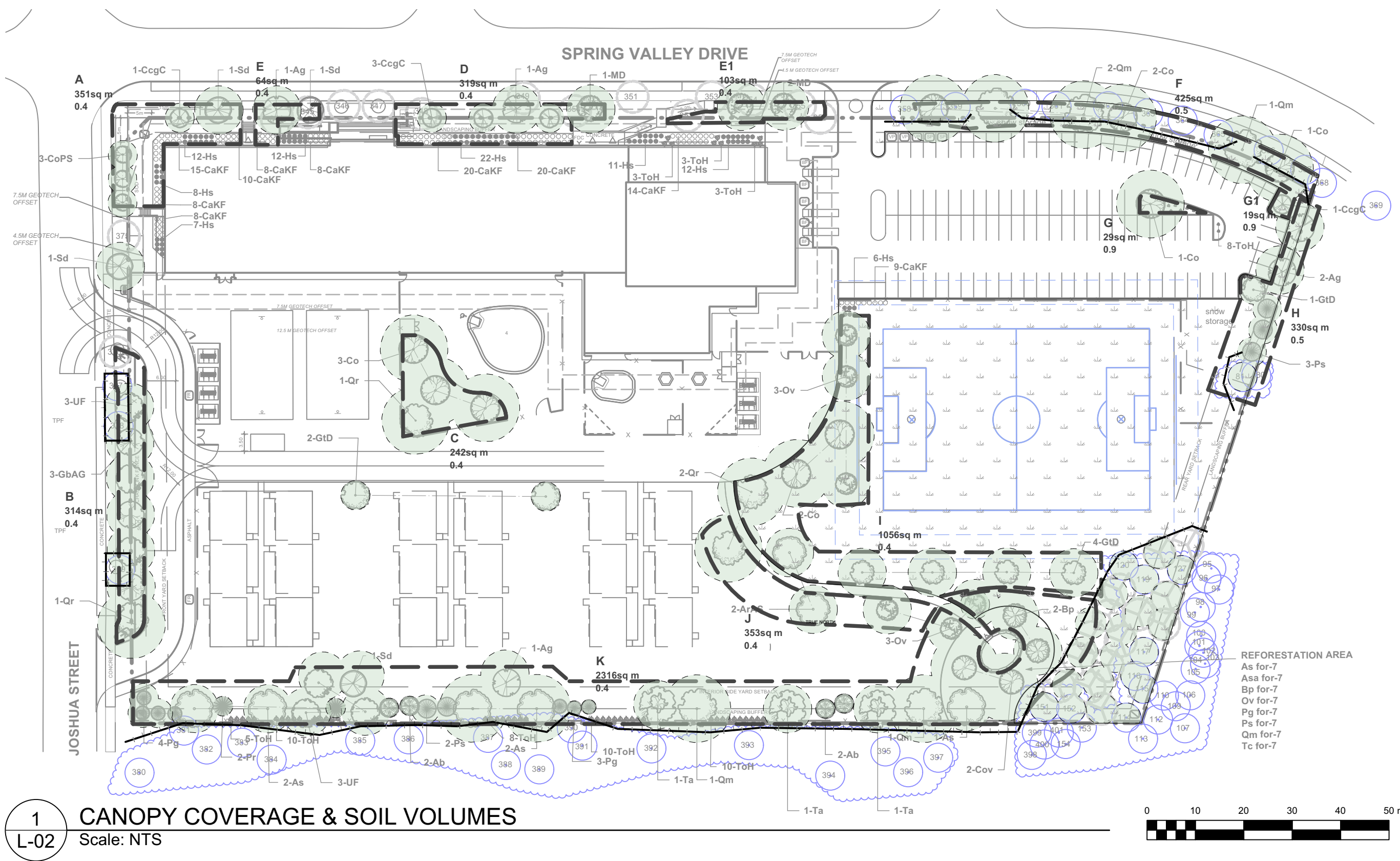
scale	As Shown	drawn by	D.A.
date	2025-02-25	checked by	M.R.
project number	N45 24-828	drawing number	
RA	24-1743		

**L-01**

CONTRACTOR TO VERIFY ALL DIMENSIONS AND NOTIFY THE ARCHITECT OF ANY DISCREPANCIES BEFORE WORK COMMENCES

DO NOT SCALE DRAWINGS





- LEGEND**
- EXISTING TREES TO BE PRESERVED
  - EXISTING TREES TO BE TRANSPLANTED
  - TRANSPLANTED TREE
  - PROPOSED PLANTING
  - TREE PROTECTION FENCE (TPF)

TREE CANOPY COVERAGE			
TOTAL CANOPY AREA	7112	m2	
TOTAL SITE AREA	28345	m2	
PERCENT COVERAGE	25.09%		

Soil Volume Area, Tree Quantity and Size		Tree Quantity	OTTAWA Target Soil Volume (m³)	Design Soil Volume	Soil Adequacy percentage	%Soil to be supplied by contractor
<b>AREA A - 1 Medium, 1 Small, 3 L - Columnar Trees</b>						SEE NOTE
plant bed (351 sq m x 0.4 ave metre deep)		5	87.0	140.4	161%	2
<b>AREA B - 1 Large, 6 Medium, 2 Ex. Trees</b>						SEE NOTE
plant bed (314 sq m x 0.4 ave metre deep)		8	144.0	125.6	87%	2
<b>AREA C - 4 Large Trees</b>						SEE NOTE
plant bed (242 sq m x 0.4 ave metre deep)		4	72.0	96.8	134%	1
<b>AREA D - 3 Small, 2 Medium Trees</b>						SEE NOTE
plant bed (319 sq m x 0.4 ave metre deep)		4	66.0	127.6	193%	2
<b>AREA E - 1 Medium Tree</b>						SEE NOTE
plant bed (61 sq m x 0.7 ave metre deep)		2	36.0	42.7	119%	2
<b>AREA E1 - 2 Medium Trees</b>						SEE NOTE
plant bed (103 sq m x 0.4 ave metre deep)		2	36.0	41.2	114%	2
<b>AREA F - 6 Large, 3 Ex. Trees</b>						SEE NOTE
plant bed (425 sq m x 0.4 ave metre deep)		6	108.0	170.0	157%	2
<b>AREA G - 1 Large Tree</b>						SEE NOTE
plant bed (29.5 sq m x 1.2ave metre deep)		1	30.0	35.4	118%	1
<b>AREA G1 - 1 Small Tree</b>						SEE NOTE
plant bed (19 sq m x 1.1ave metre deep)		1	25.0	20.9	84%	1
<b>AREA H - 3 Medium Trees, 3 Conifers</b>						SEE NOTE
plant bed (330 sq m x 0.4ave metre deep)		6	108.0	132.0	122%	3
<b>AREA I - 3 Large, 8 Medium Trees</b>						SEE NOTE
plant bed (1056 sq m x 0.4ave metre deep)		11	198.0	422.4	213%	4
<b>AREA J - 1 Large, 2 Medium Trees</b>						SEE NOTE
plant bed (353 sq m x 0.4ave metre deep)		3	54.0	141.2	261%	4
<b>AREA K - 8 Large, 13 Medium Trees, 13 Con.</b>						SEE NOTE
plant bed (2316 sq m x 0.4ave metre deep)		28	504.0	926.4	184%	4

\* Smaller columnar trees, small ornamental trees with growth to 8-15cm DBH, large shrubs, and columnar conifers calculated using 'How much soil to grow a big tree' by DeepRoot as a guide

Reforestation Trees				
As for	7	Acer saccharum	Sugar Maple	150 cm ht.
Asa for	7	Acer rubrum	Red Maple	150 cm ht.
Bp for	7	Betulus papyrifera	White Birch	150 cm ht.
Ov for	7	Ostrya virginiana	American Hophornbeam	150 cm ht.
Pg for	7	Picea glauca	White Spruce	75 cm ht.
Ps for	7	Pinus strobus	White Pine	50 cm ht.
Qm for	7	Quercus macrocarpa	Bur Oak	150 cm ht.
Tc for	7	Tsuga canadensis	Canadian Hemlock	75 cm ht.

### 3 REFORESTATION PLANTING & DETAIL

Scale: NTS

### NOTES:

#### 1 WHERE SOIL VOLUMES ARE WITHIN EXCAVATED DEVELOPMENT AREA:

PROVIDE 100% PLANTING MEDIUM TO DEPTHS INDICATED IN SOIL VOLUME CHART.

WHERE SUBSOIL BELOW THE INDICATED DEPTH OF PLANTING MEDIUM IS NOT CONDUCTIVE TO PLANT GROWTH, REPLACE WITH APPROVED SUBSOIL TO A FURTHER DEPTH OF 300mm.

#### 2 WHERE SOIL VOLUMES INCLUDE SOIL VOLUMES IN R.O.W. AT PROPERTY LINE

R.O.W. AND WITHIN SUBJECT PROPERTY.

ASSUME ALL SOIL VOLUME REQUIREMENTS ARE MET WITHIN THE R.O.W. AREA. REINSTATE ANY DISTURBED AREAS IN R.O.W. OUTSIDE THE 2m RADIUS TREE PITS WITH 100-150mm TOPSOIL AND SOD.

PLACE PLANTING MEDIUM (TO DEPTH INDICATED ON SOIL VOLUME CHART) AT ALL DISTURBED AREAS WHERE EXISTING SOILS ARE REMOVED, OR WHERE EXISTING SOILS ARE NOT CONDUCTIVE TO PLANT GROWTH.

ADDITIONAL PLANTING MEDIUM IS NOT REQUIRED WHERE EXISTING SOIL IS PRESENT IN OR ADJACENT TO THE R.O.W. THIS DOES NOT INCLUDE TOPSOIL REQUIRED FOR SODDING.

WHERE SUBSOIL BELOW THE INDICATED DEPTH OF PLANTING MEDIUM IS NOT CONDUCTIVE TO PLANT GROWTH, REPLACE WITH APPROVED SUBSOIL TO A FURTHER DEPTH OF 300mm.

BASE CONTRACT TO ASSUME SUBSOIL IS CONDUCTIVE TO PLANT GROWTH.

#### 3 WHERE SOIL VOLUMES INCLUDE SOIL VOLUMES ON ADJACENT PROPERTY AT PROPERTY LINE

ADJACENT PROPERTY AND WITHIN SUBJECT PROPERTY.

ASSUME ALL SOIL VOLUME REQUIREMENTS ARE MET WITHIN THE ADJACENT PROPERTY AREA. REINSTATE ANY DISTURBED AREAS ON ADJACENT PROPERTY OUTSIDE THE 2m RADIUS TREE PITS WITH 100-150mm TOPSOIL AND SOD.

PLACE PLANTING MEDIUM (TO DEPTH INDICATED ON SOIL VOLUME CHART) AT ALL DISTURBED AREAS WHERE EXISTING SOILS ARE REMOVED, OR WHERE EXISTING SOILS ARE NOT CONDUCTIVE TO PLANT GROWTH.

ADDITIONAL PLANTING MEDIUM IS NOT REQUIRED WHERE EXISTING SOIL IS PRESENT IN OR ADJACENT TO THE ADJACENT PROPERTY. THIS DOES NOT INCLUDE TOPSOIL REQUIRED FOR SODDING.

WHERE SUBSOIL BELOW THE INDICATED DEPTH OF PLANTING MEDIUM IS NOT CONDUCTIVE TO PLANT GROWTH, REPLACE WITH APPROVED SUBSOIL TO A FURTHER DEPTH OF 300mm.

BASE CONTRACT TO ASSUME SUBSOIL IS CONDUCTIVE TO PLANT GROWTH.

#### 4 AREAS NEAR SOCCER FIELD AND OUTDOOR CLASSROOM

ASSUME ALL SOIL VOLUME REQUIREMENTS ARE MET, REINSTATE ANY DISTURBED AREAS ON ADJACENT PROPERTY OUTSIDE THE 2m RADIUS TREE PITS WITH 100-150mm TOPSOIL AND SOD.

ADDITIONAL PLANTING MEDIUM IS NOT REQUIRED WHERE EXISTING SOIL IS PRESENT IN OR ADJACENT TO THE ADJACENT PROPERTY. THIS DOES NOT INCLUDE TOPSOIL REQUIRED FOR SODDING.

WHERE SUBSOIL BELOW THE INDICATED DEPTH OF PLANTING MEDIUM IS NOT CONDUCTIVE TO PLANT GROWTH, REPLACE WITH APPROVED SUBSOIL TO A FURTHER DEPTH OF 300mm.

BASE CONTRACT TO ASSUME SUBSOIL IS CONDUCTIVE TO PLANT GROWTH.

### Bed Preparation

1 EXCAVATE OR PLACE FILL FOR PLANTING BED TO PROVIDE 750mm MINIMUM DEPTH OF PLANTING MEDIUM AND 300mm MIN DEPTH SUBSOIL (CONTINUOUS BETWEEN TREES).

2 WHERE DISTANCE BETWEEN CURB ALLOWS, EXTEND DEPTH OF SUBSOIL. SUBSOIL TO BE APPROVED FILL OR OPSS GRANULAR 'B' TYPE 1 CULTIVATE PLANTING SUBSOIL INTO SUBGRADE TO A DEPTH OF 150mm.

3 PLACE COMPACTED PLANTING MEDIUM ON SUBSOIL TO ACHIEVE FINAL GRADE.

4 CENTRE OF BED TO BE CROWNED ABOVE ADJACENT GRADE TO APPROVAL OF CONSULTANT.

A - SUBSOIL / SUBGRADE CULTIVATED LAYER  
B - PLANTING MEDIUM  
C - ROOTBALL / POT

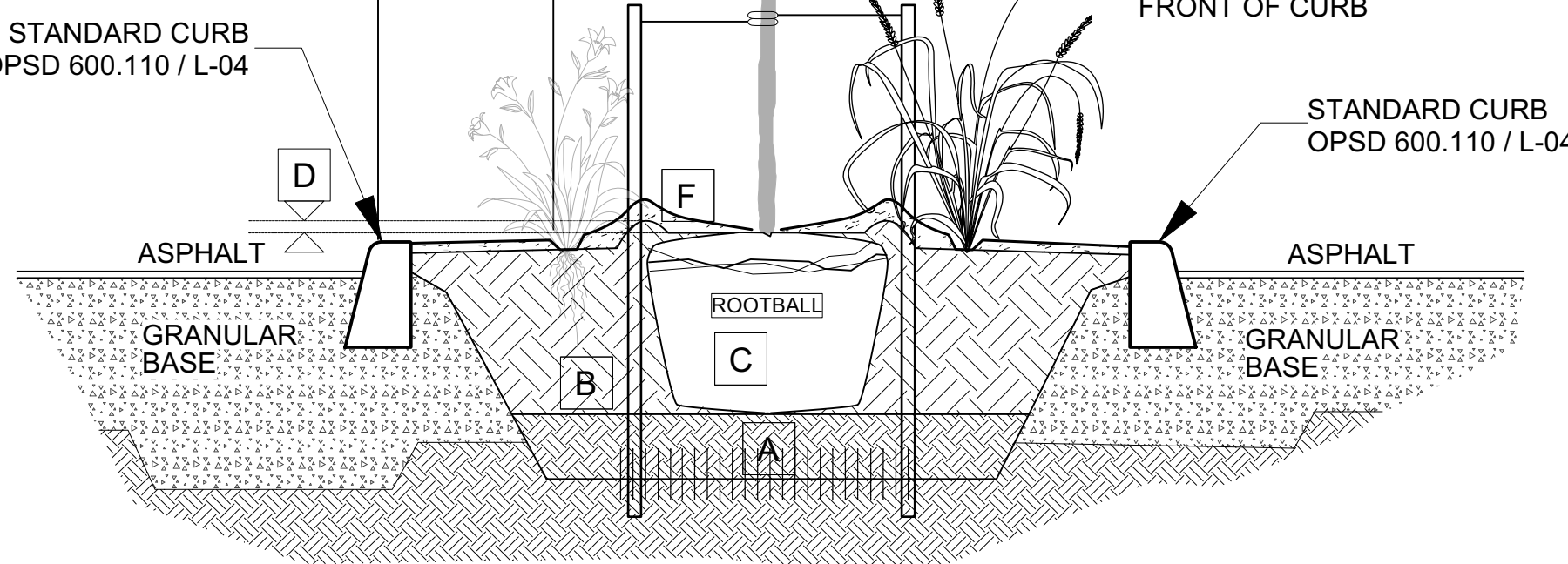
D - TOP OF ROOT CROWN TO BE FLUSH WITH PLANTING SOIL, WITH 100mm DEEP SAUCER

E - 2-METAL POSTS (40x 40x 2100 mm) PLACE AT OUTSIDE OF ROOTBALL AND FASTEN TO TRUNK WITH 3 mmØ GALVANIZED WIRE AND 25 mmØ 2 PLY REINFORCED HOSE (PARALLEL TO CURB)

F - 50-75 mm MULCH LAYER, KEEP MULCH AWAY FROM STEMS AND PROVIDE 100mm DEEP SAUCER

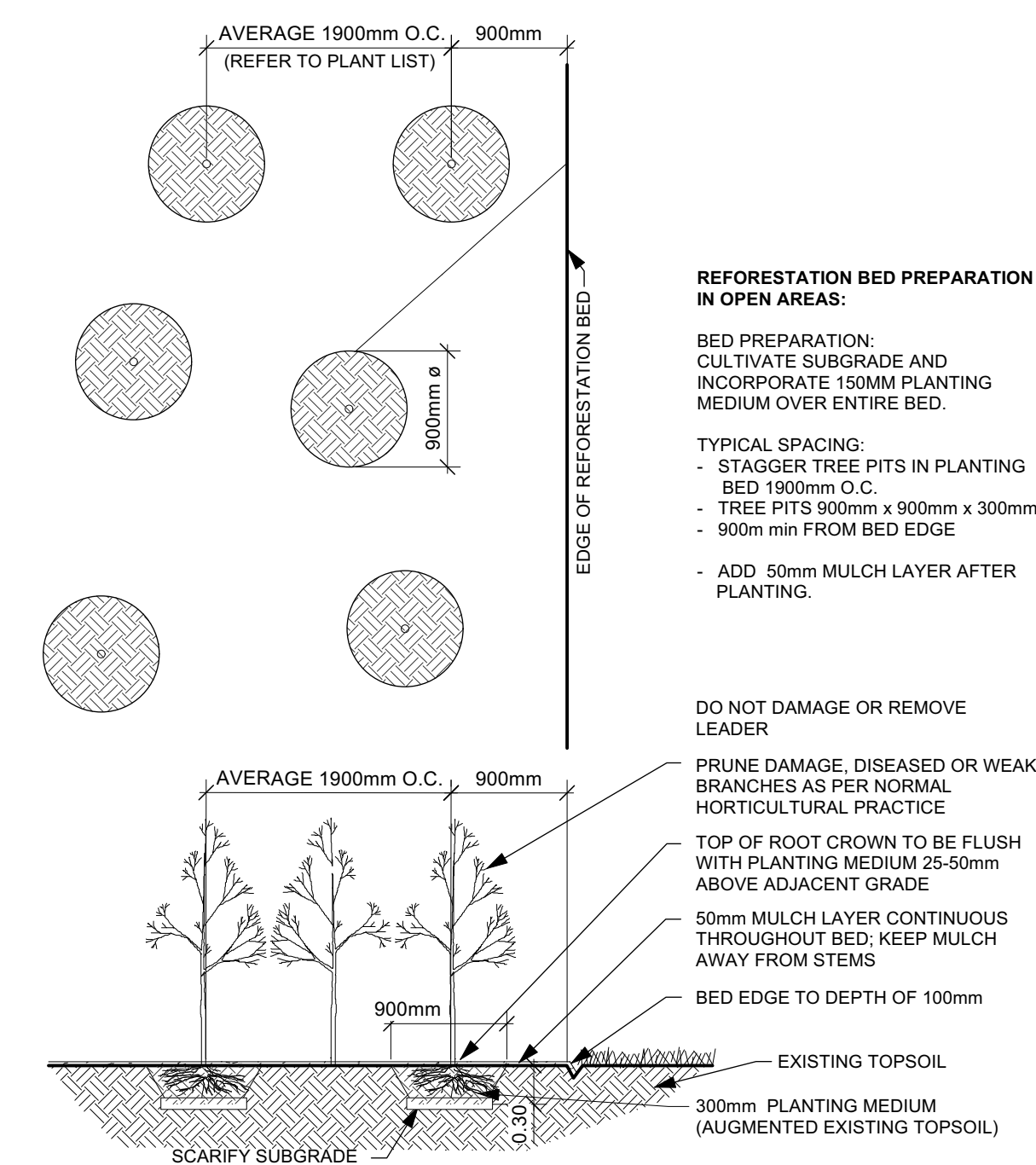
G - PRUNE DAMAGE, DISEASED OR WEAK BRANCHES AS PER ACCEPTED HORTICULTURAL PRACTICE. DO NOT DAMAGE OR REMOVE LEADER

H - FIRST ROW OF PERENNIALS TO BE PLANTED 450mm MINIMUM FROM FRONT OF CURB

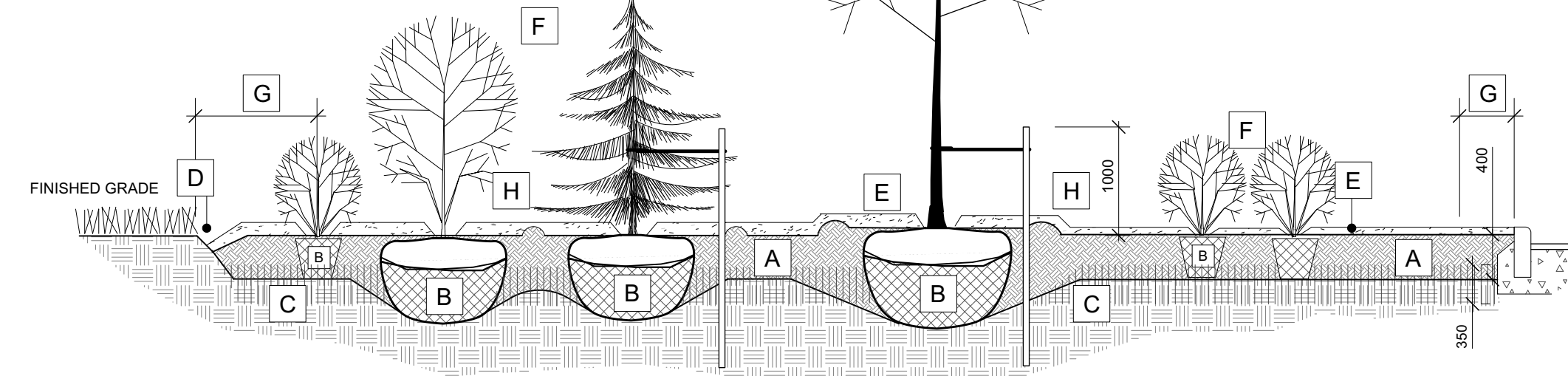


### 2 TREE & PERENNIAL PLANTING IN CURBED PLANTER

Scale: NTS



- A 450mm COMPACTED PLANTING MEDIUM, DEEPEN AT TREES
- B ROOTBALL, TOP OF ROOT CROWN TO BE FLUSH WITH PLANTING SOIL AND 50mm ABOVE SOIL OUTSIDE PLANTING PIT / POT
- C 350mm PLANTING MEDIUM / SUBSOIL CULTIVATED LAYER. CULTIVATE AT TREE PIT BOTTOM. SEE NOTE BELOW.
- D EDGE TO DEPTH OF 100mm.
- E 50-75 mm MULCH LAYER, KEEP MULCH AWAY FROM STEMS.
- F PRUNE DAMAGE, DISEASED OR WEAK BRANCHES AS PER ACCEPTED HORTICULTURAL PRACTICE. DO NOT DAMAGE OR REMOVE LEADER.
- G FIRST ROW OF PERENNIALS TO BE PLANTED 800mm FROM EDGE OF BED/CURB
- H PROVIDE 150 mm DEEP SAUCER AT TREES



### BED PREPARATION

- EXCAVATE OR PLACE FILL FOR PLANTING BED TO PROVIDE 450mm MINIMUM DEPTH OF PLANTING MEDIUM. PLANTING BED TO BE DEEPENED AT TREE LOCATIONS. F RASE OF PIT IS OVER, EXCAVATED, RAISE BOTTOM TO PROPER LEVEL WITH COMPACTED PLANTING MEDIUM
- PLACE 150mm PLANTING MEDIUM ON SUBGRADE AND CULTIVATE INTO TOP 200mm OF SUBSOIL. SEE NOTE BELOW.
- PLACE REMAINDER OF PLANTING MEDIUM OVER CULTIVATED PORTION TO ACHIEVE FINAL GRADE.
- CENTRE OF BED TO BE CROWNED ABOVE ADJACENT GRADE TO APPROVAL OF CONSULTANT.
- ENSURE POSITIVE DRAINAGE AWAY FROM BUILDING WALLS WHERE APPLICABLE.

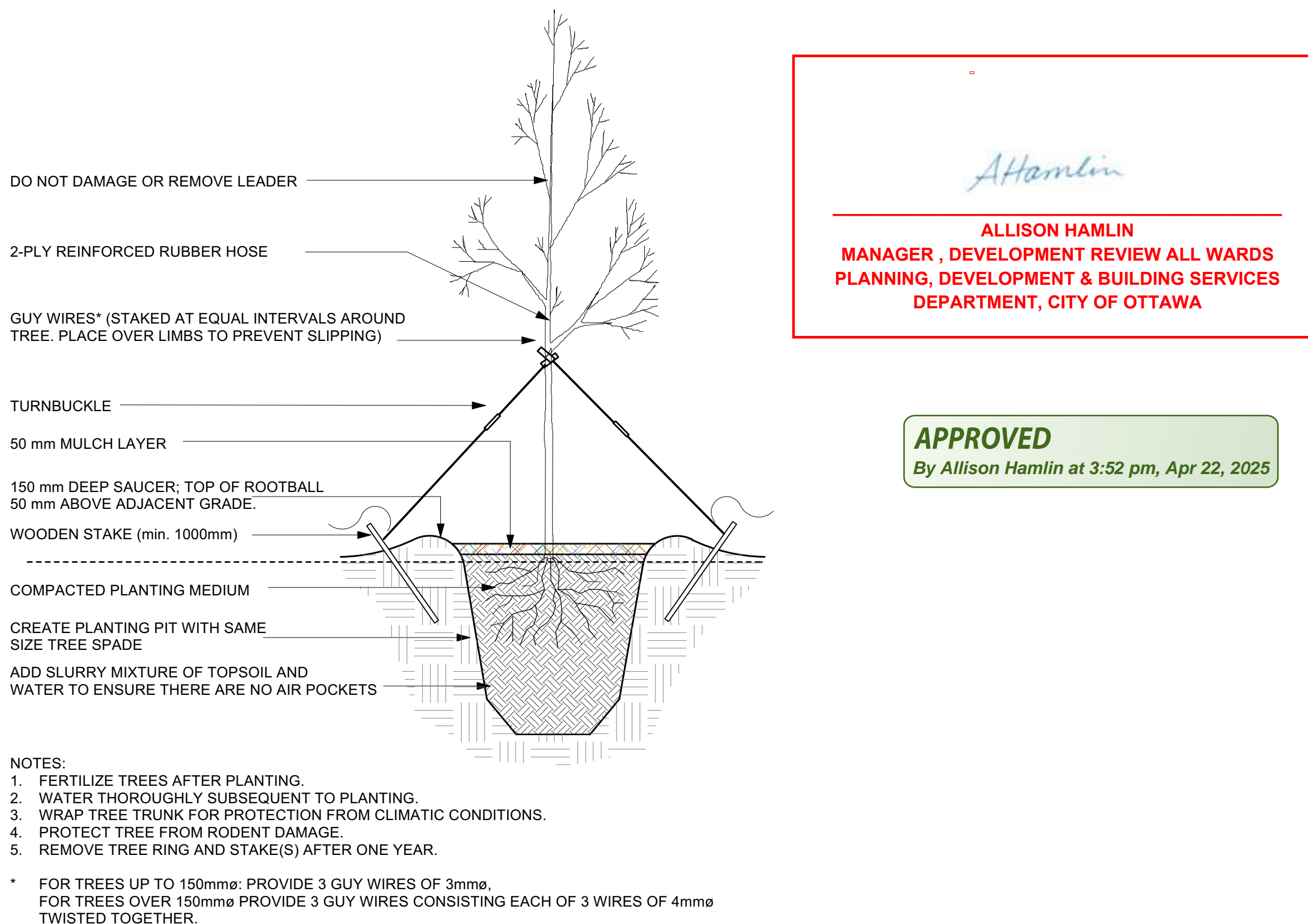
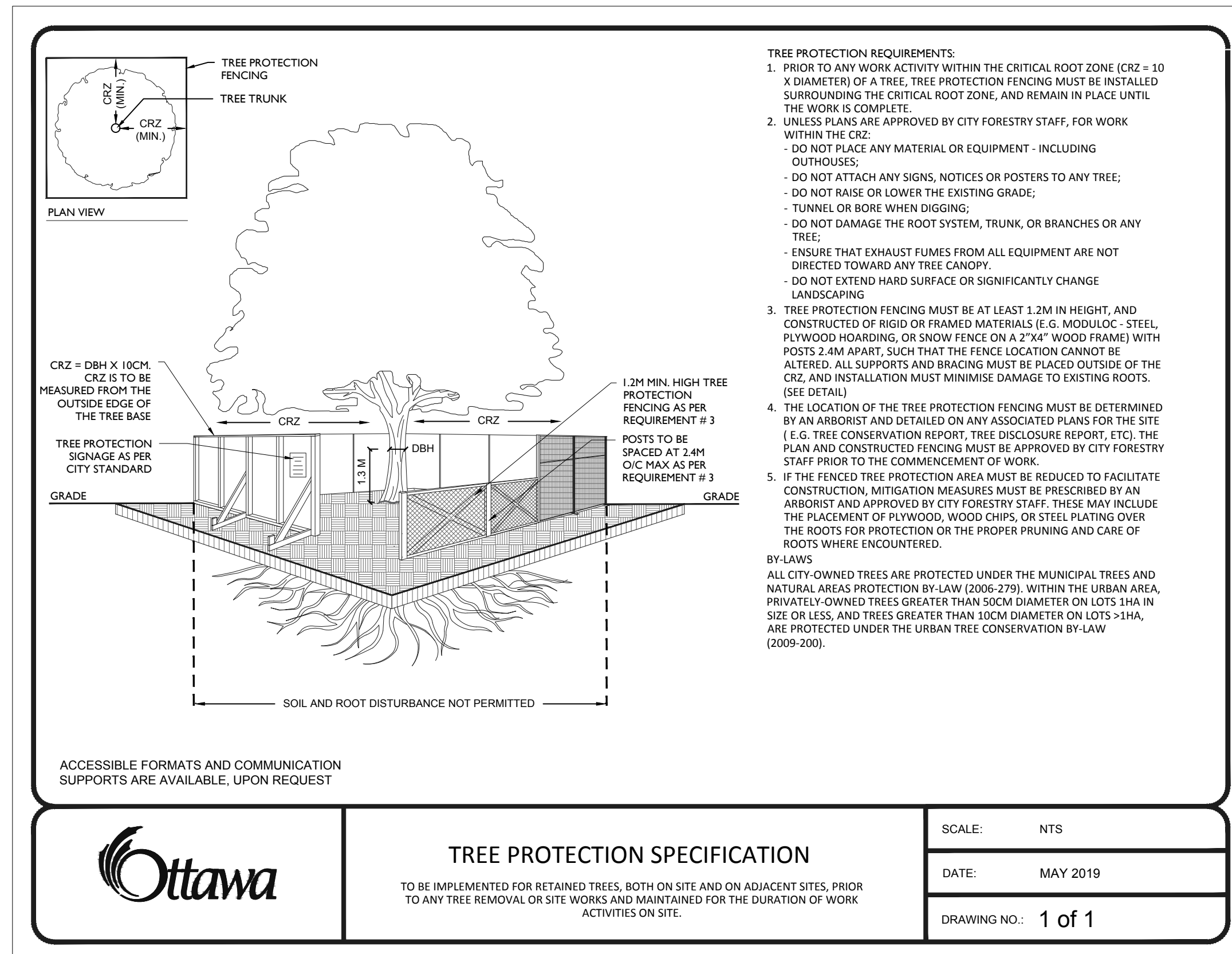
### TREE PLANTING:

- CUT AND REMOVE TOP 2/3 OF BURLAP AND WIRE BASKET FROM ROOTBALL.
- PLACE 1-METAL POST (40 x 40 x 2100 mm) AT OUTSIDE OF ROOTBALL ON THE PREVAILING WIND SIDE AND FASTEN TO TRUNK WITH APPROVED TREE TIES.
- WATER THOROUGHLY SUBSEQUENT TO PLANTING AND THROUGHOUT THE WARRANTY PERIOD.
- WRAP TREE TRUNK AFTER INSPECTION OF TREES BY LANDSCAPE ARCHITECT.
- INSTALL RODENT GUARD AND PROTECT TREE FROM RODENT DAMAGE.
- REMOVE TREE RINGS, STAKES AND TRUNK WRAPPING AFTER WARRANTY PERIOD.
- ENSURE THAT ALL TREES MEET THEIR REQUIRED SETBACKS WHEN PLANTED AS PER CITY'S TREE PLANTING GUIDELINE (2009). DECIDUOUS SPECIES SHALL BE A MINIMUM 1.5 METERS AND CONIFEROUS SPECIES SHALL BE A MINIMUM OF 4.5 METER FROM ROADWAY, DRIVEWAY, SIDEWALK.

### 6 PLANTING DETAIL

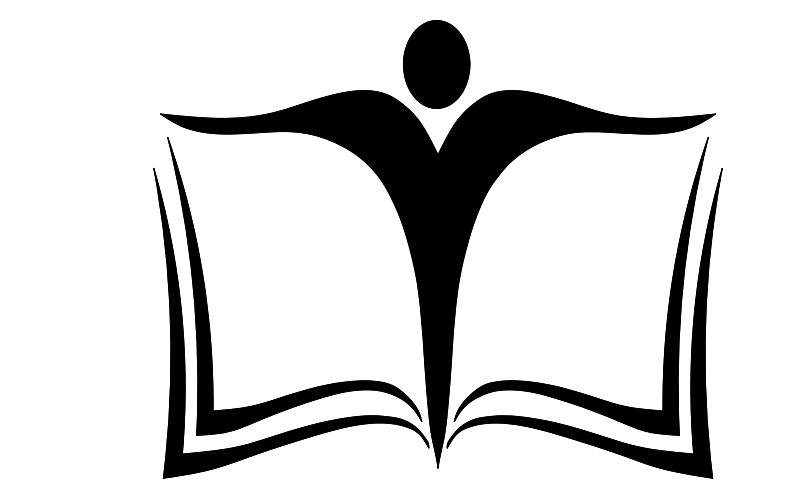
Scale: NTS

- PLANTING BED AREAS EXCAVATED TO 500mm BELOW FINAL GRADE FOR ROUGH GRADE.
- REFER TO PLANT LIST FOR PLANT SPACING.



### 4 TREE TRANSPLANTING DETAIL

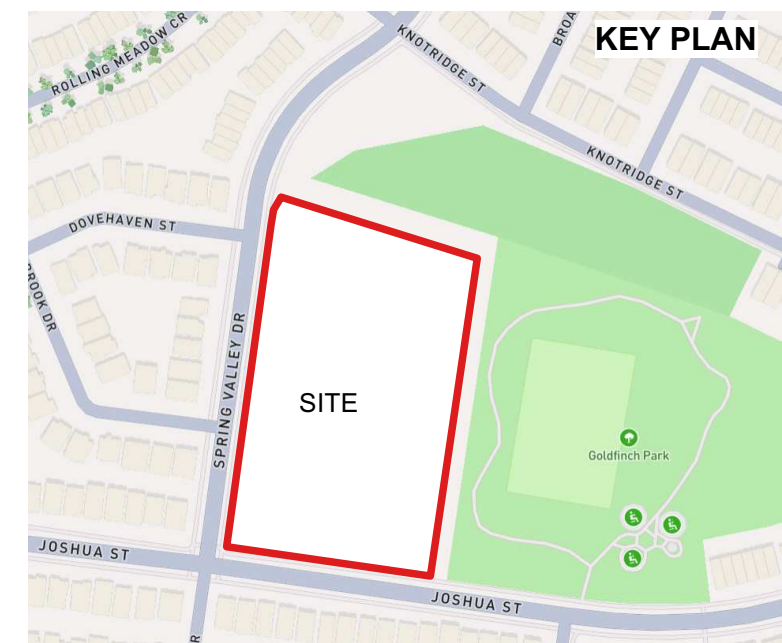
Scale: NTS



OTTAWA - CARLETON  
DISTRICT SCHOOL BOARD

### GENERAL NOTES

- All general site information and conditions compiled from existing plans, surveys and consultant's field notes. Report all discrepancies prior to any work. No responsibility is born by the Consultant for unknown subsurface conditions.
- The location of the utilities is approximate only, and the exact location should be determined by consulting the municipal authorities and utility companies concerned. The Contractor shall prove the location of utilities and shall be responsible for adequate protection from damage.
- All dimensions shown are to be verified on site prior to any construction. No deviations are to be made from the layouts as shown on this plan without prior consultation with the Landscape Architect and Owner.
- Obtain approval of Landscape Architect for granular base and layout of all pavement areas prior to construction.
- Stake planting locations and receive approval of Landscape Architect, prior to excavation of any planting pits. No substitutions of plant material shall be made without prior approval of the Landscape Architect.
- Where clay is encountered proper drainage must be ensured in tree/shrub pits, prior to planting. Have method approved by Landscape Architect.
- All sodded areas to receive a minimum of 150mm of topsoil over graded sub-base. If sod with mesh is used, mesh to be removed completely during sodding operations. Sod shall come from an approved source and shall be laid within 24 hours of being cut in the nursery. Only nursery sod shall be used.
- Final subgrade is to be approved by the Landscape Architect prior to sod being laid.
- Maintain positive surface runoff through the entire construction period.
- Reinstate all areas and items damaged as a result of construction activities.



06		
05		
04		
03	Reissued for SPC	2025/04/14
02	Issued for Permit	2025/02/04
01	Issued for Coordination	2025/01/30
no.	revision	date

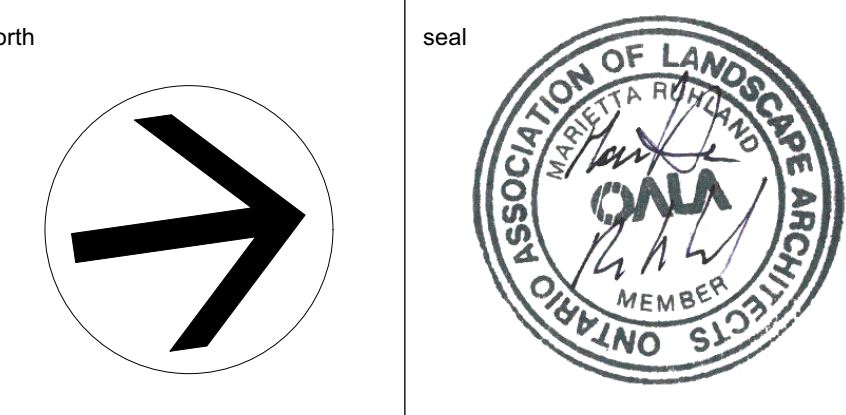
### N45 ARCHITECTURE INC.

71 Bank Street, 7th Floor - Ottawa, Ontario, K1P 5N2  
tel. 613.224.0095 fax 613.224.9811

**Ruhland & Associates Ltd**  
landscape architecture • urban design • site planning  
Ph: 613-224-4244 Fx: 613-224-4331 info@rala.ca www.rala.ca

### East Urban Centre Elementary School

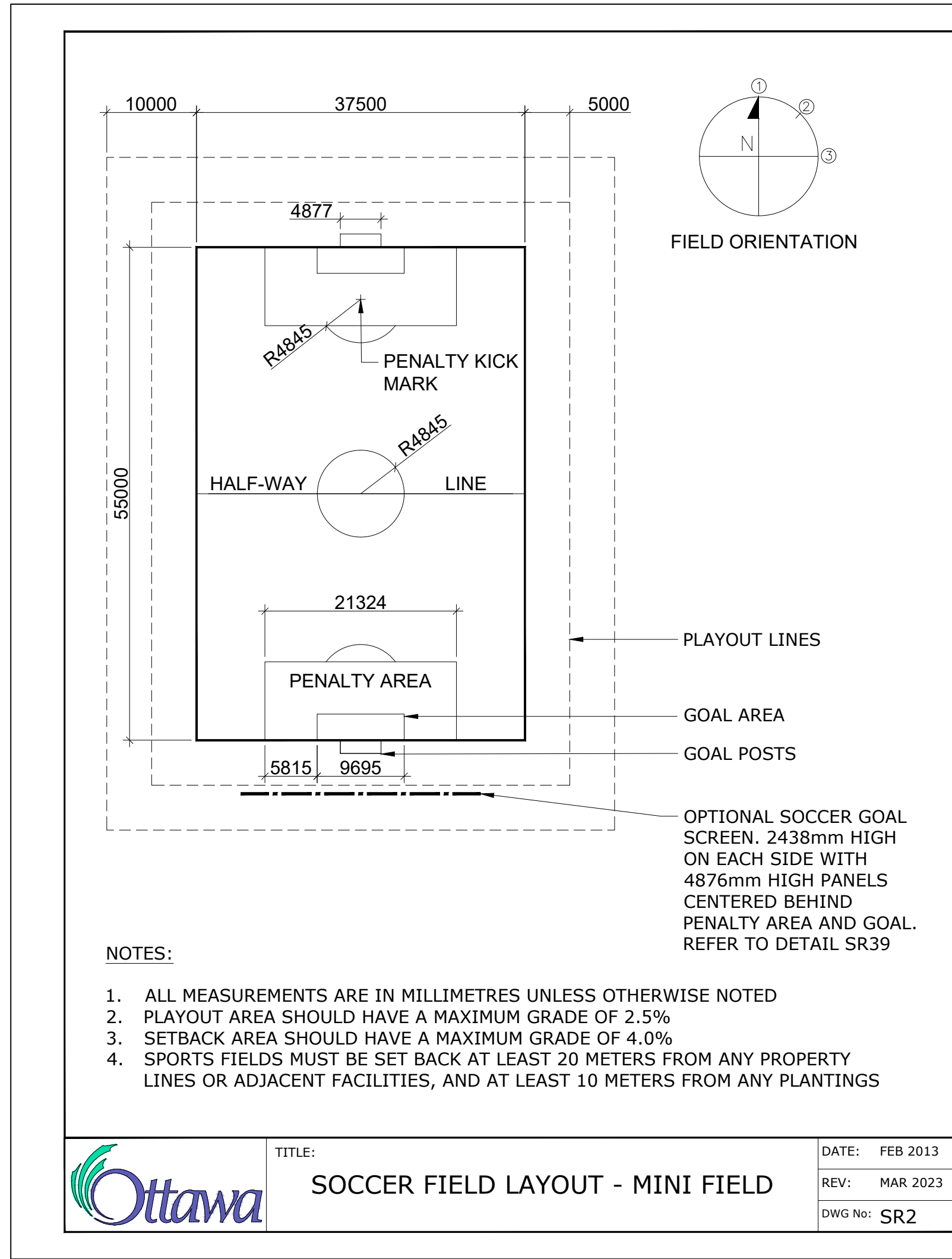
700 Spring Valley Dr.  
Ottawa, K1W 0H2.



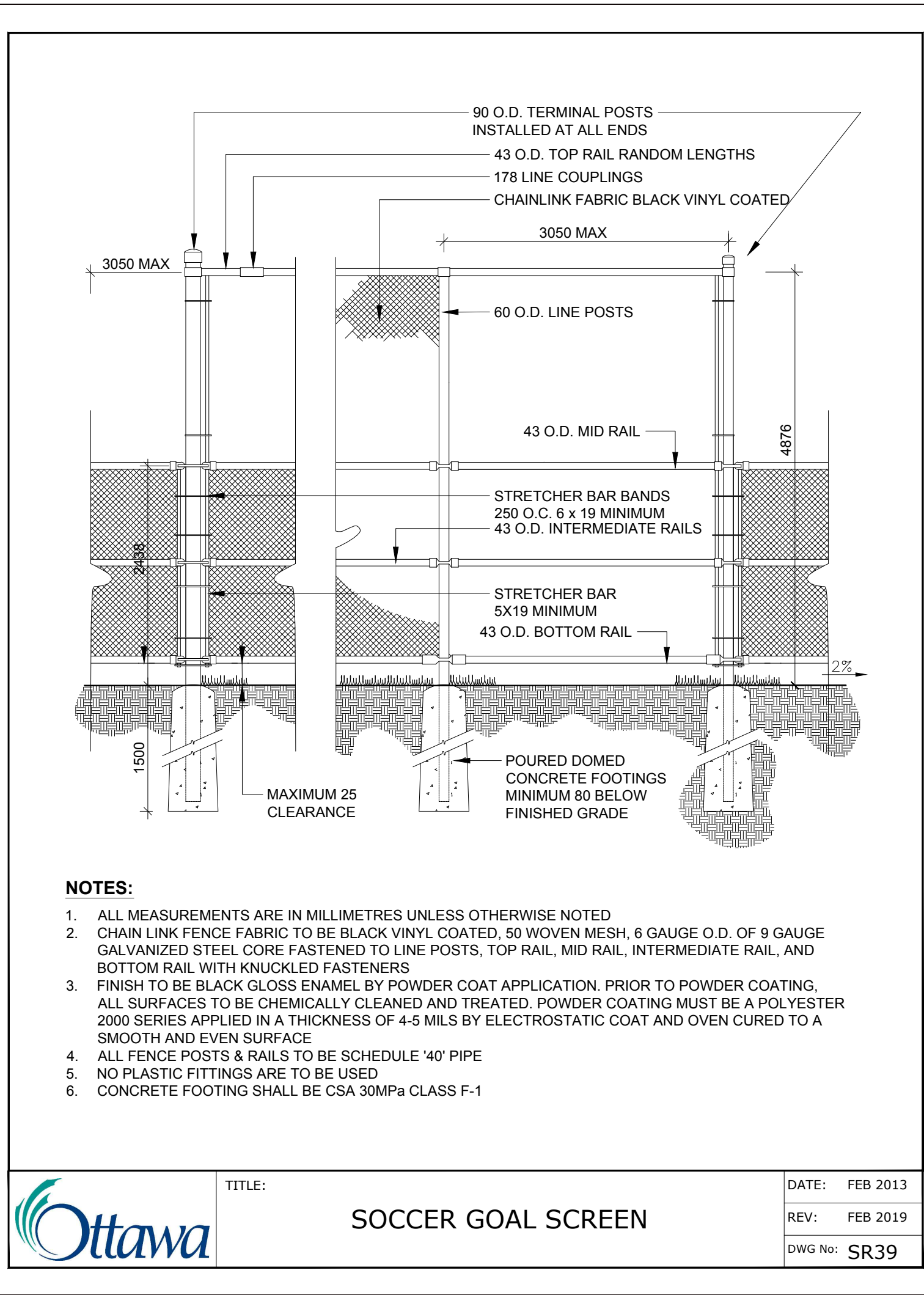
### LANDSCAPE SOIL VOLUMES / DETAILS

scale	As Shown	drawn by	D.A.
date	2025-02-25	checked by	M.R.
project number	N45 24-828	drawing number	L-02
RA	24-1743	revision	
CONTRACTOR TO VERIFY ALL DIMENSIONS AND NOTIFY THE ARCHITECT OF ANY DISCREPANCIES BEFORE WORK COMMENCES			
DO NOT SCALE DRAWINGS			

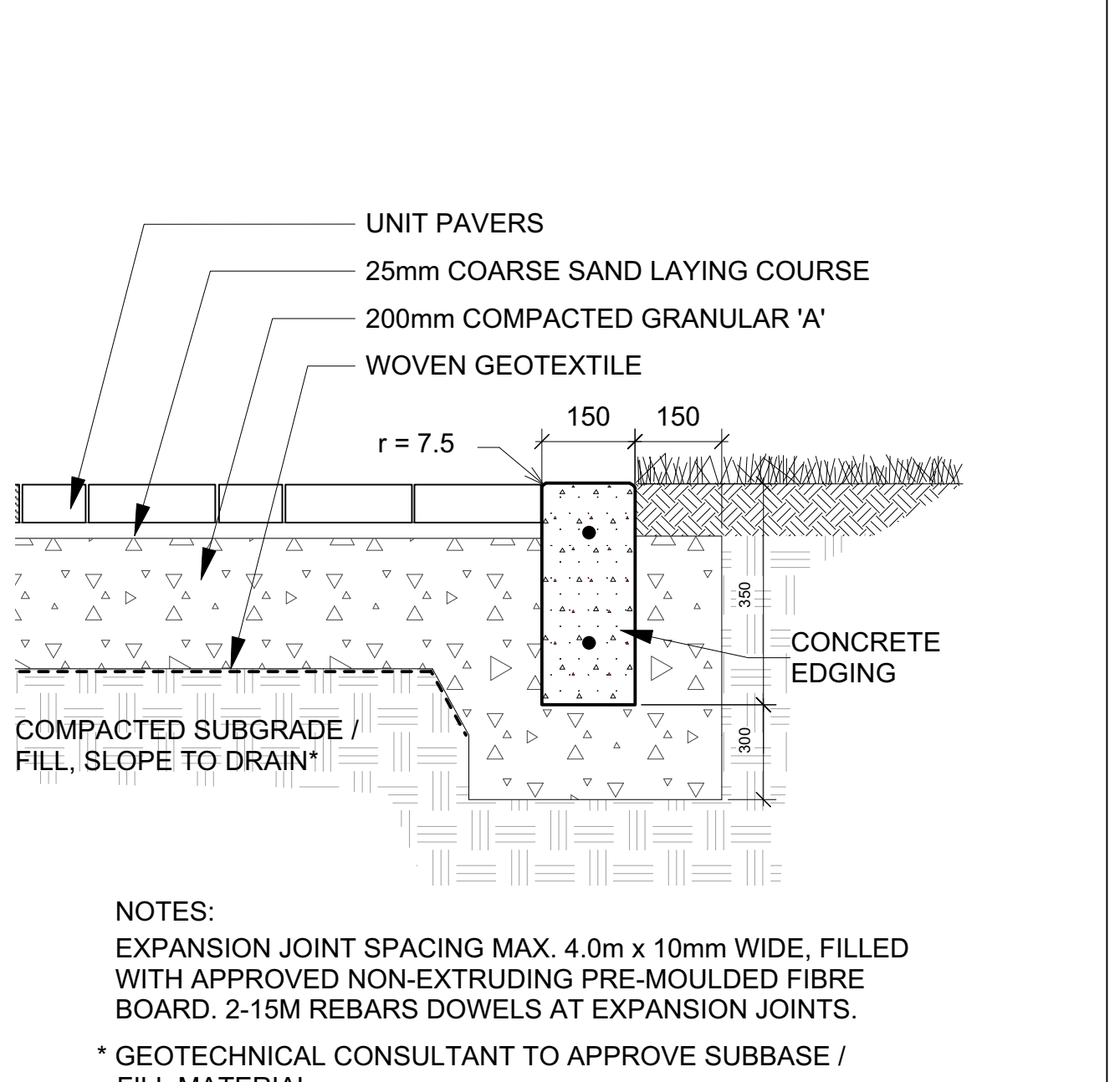
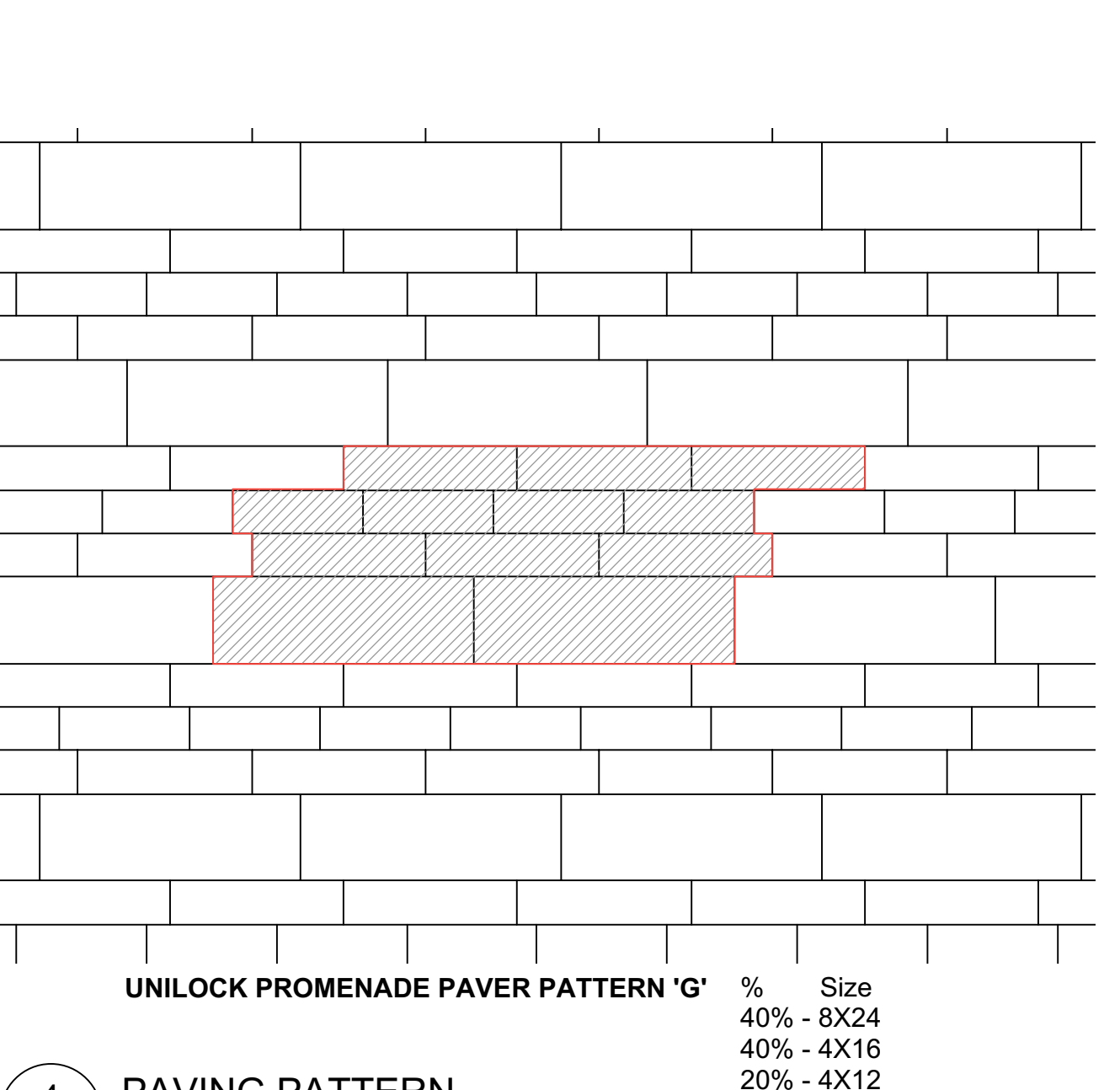
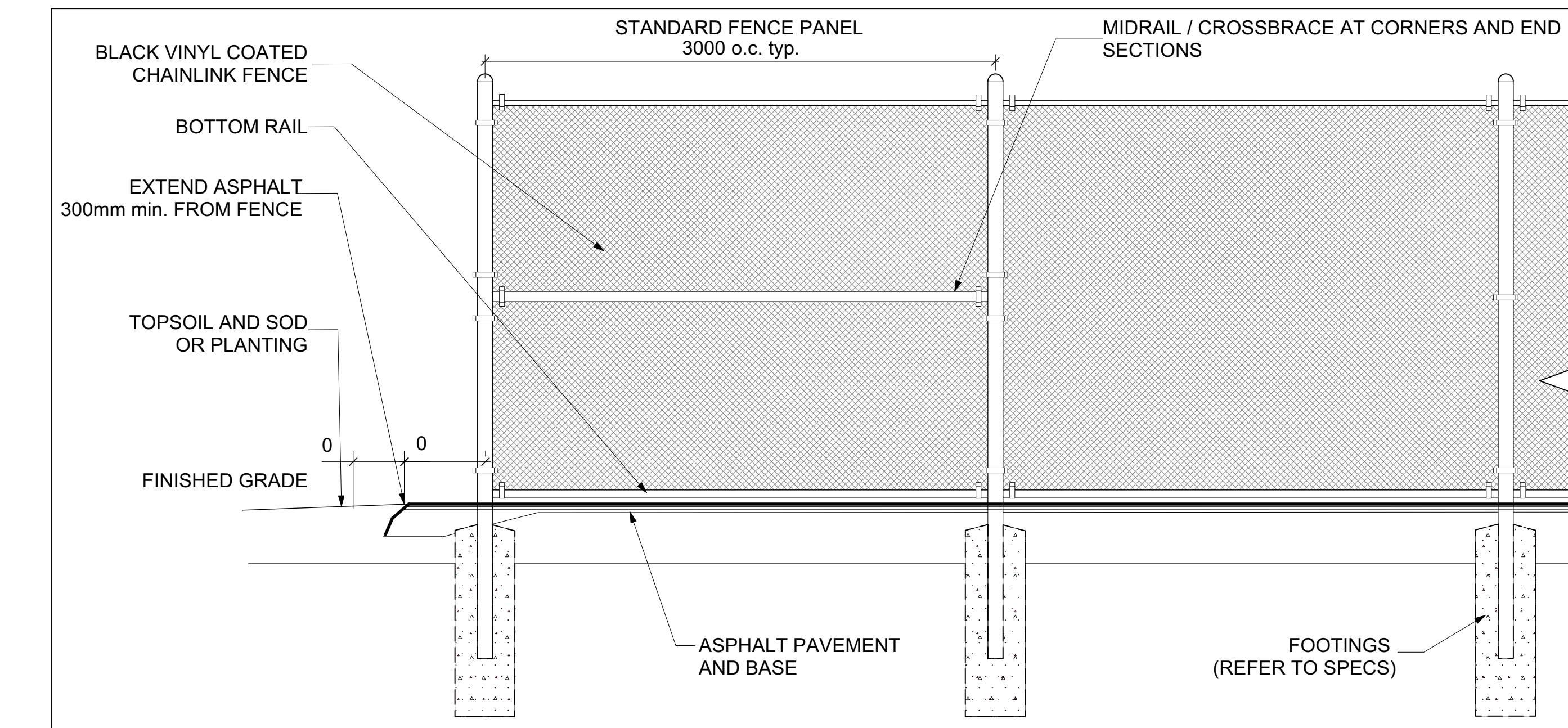
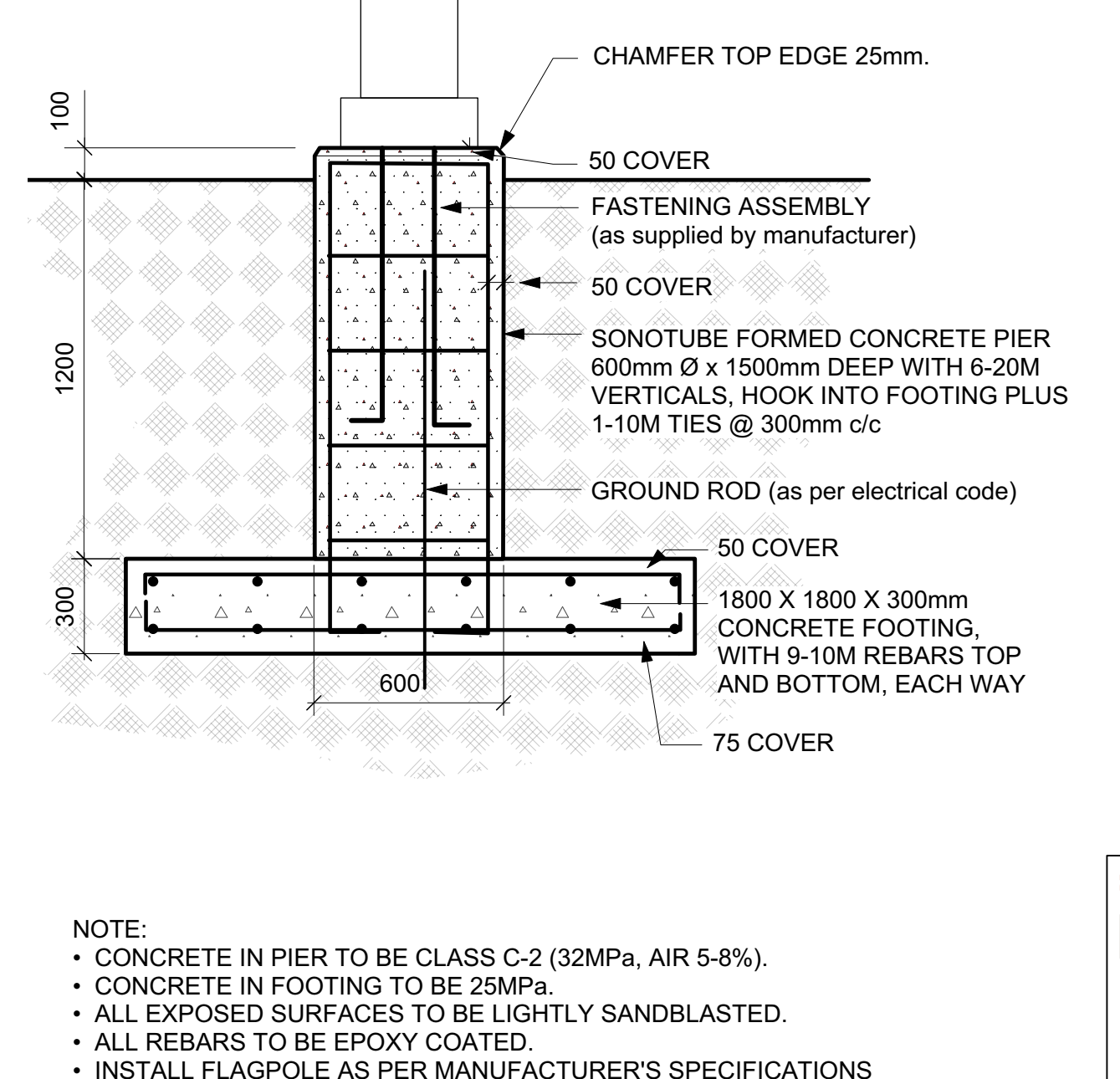
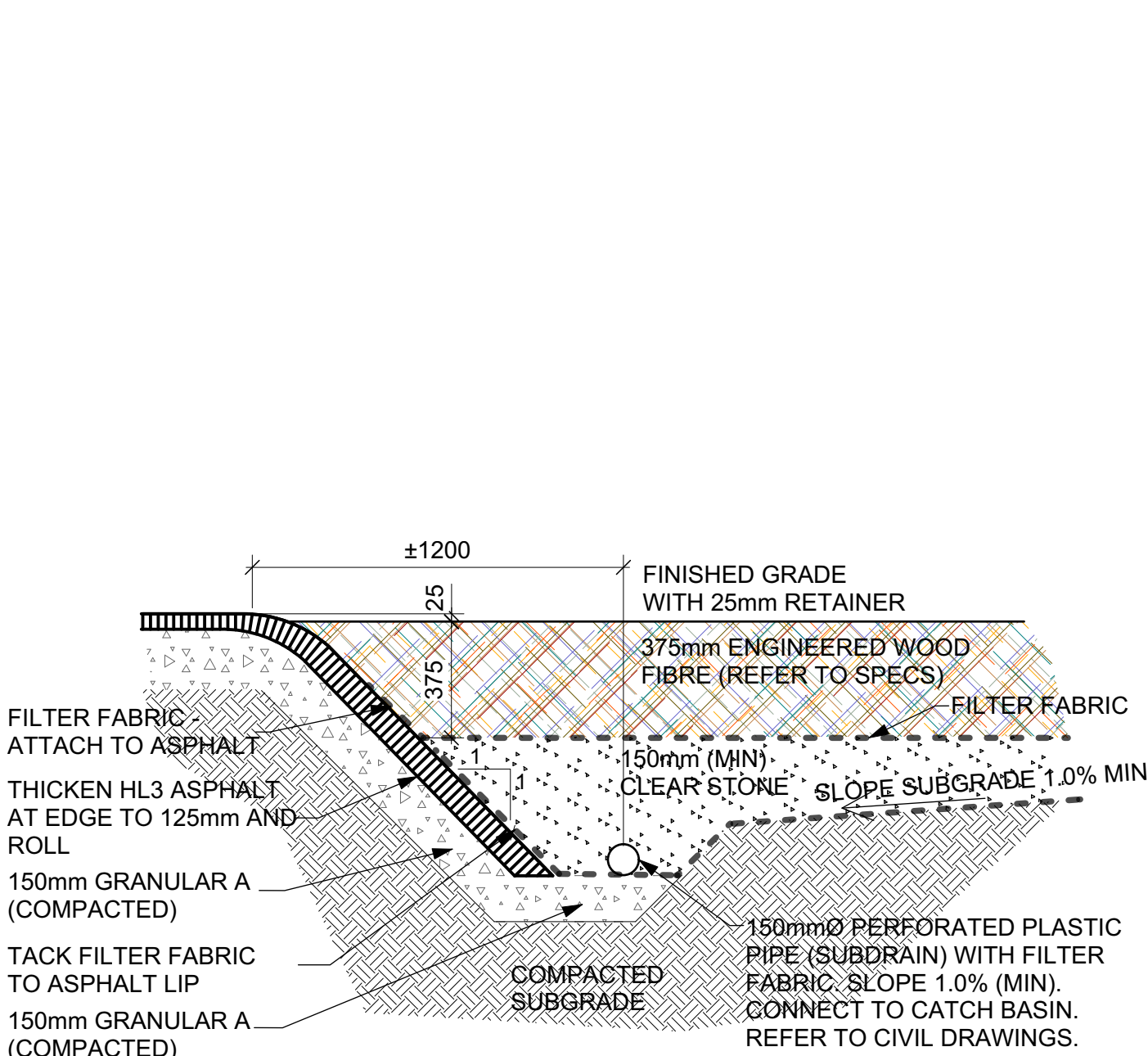
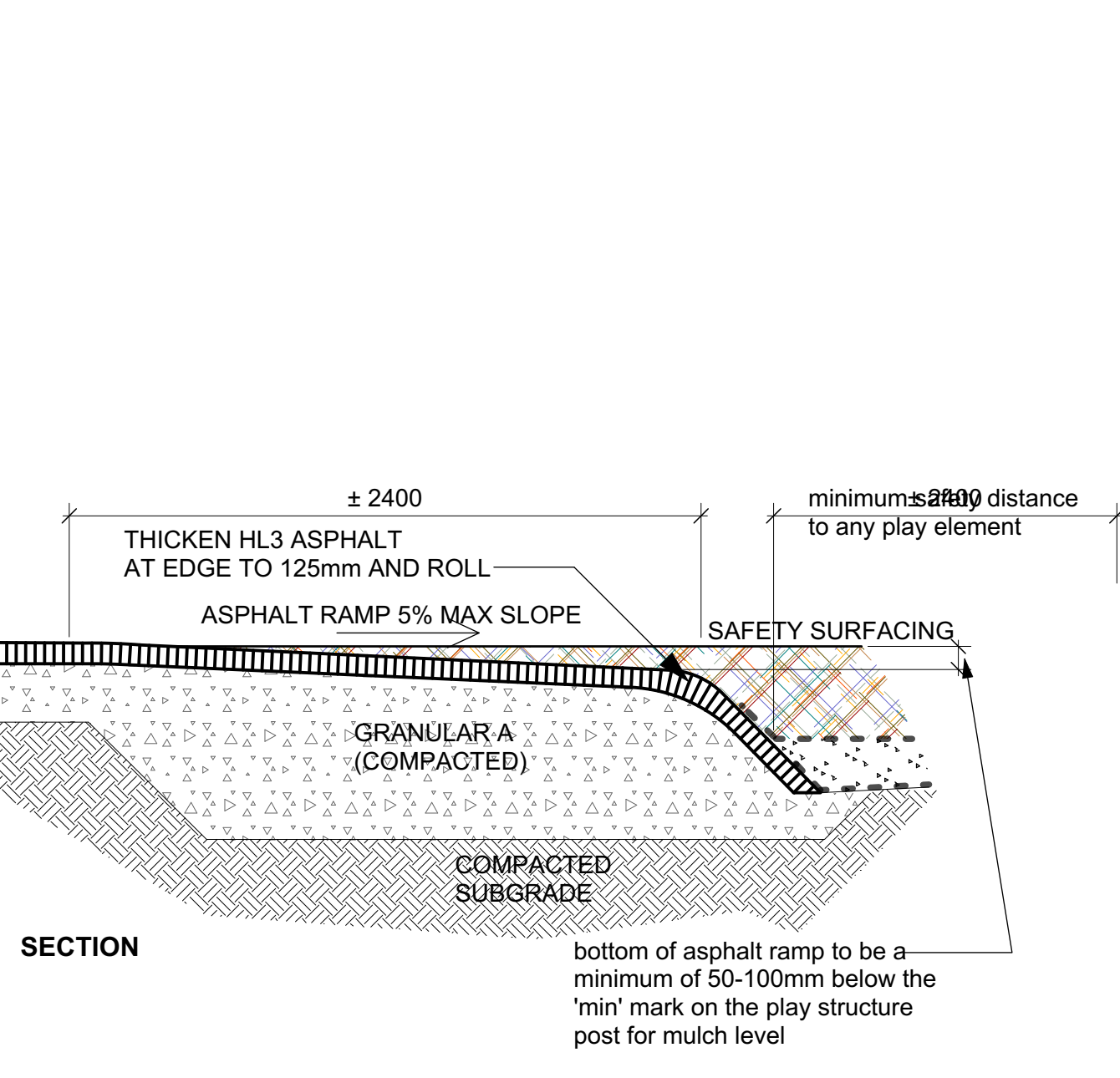
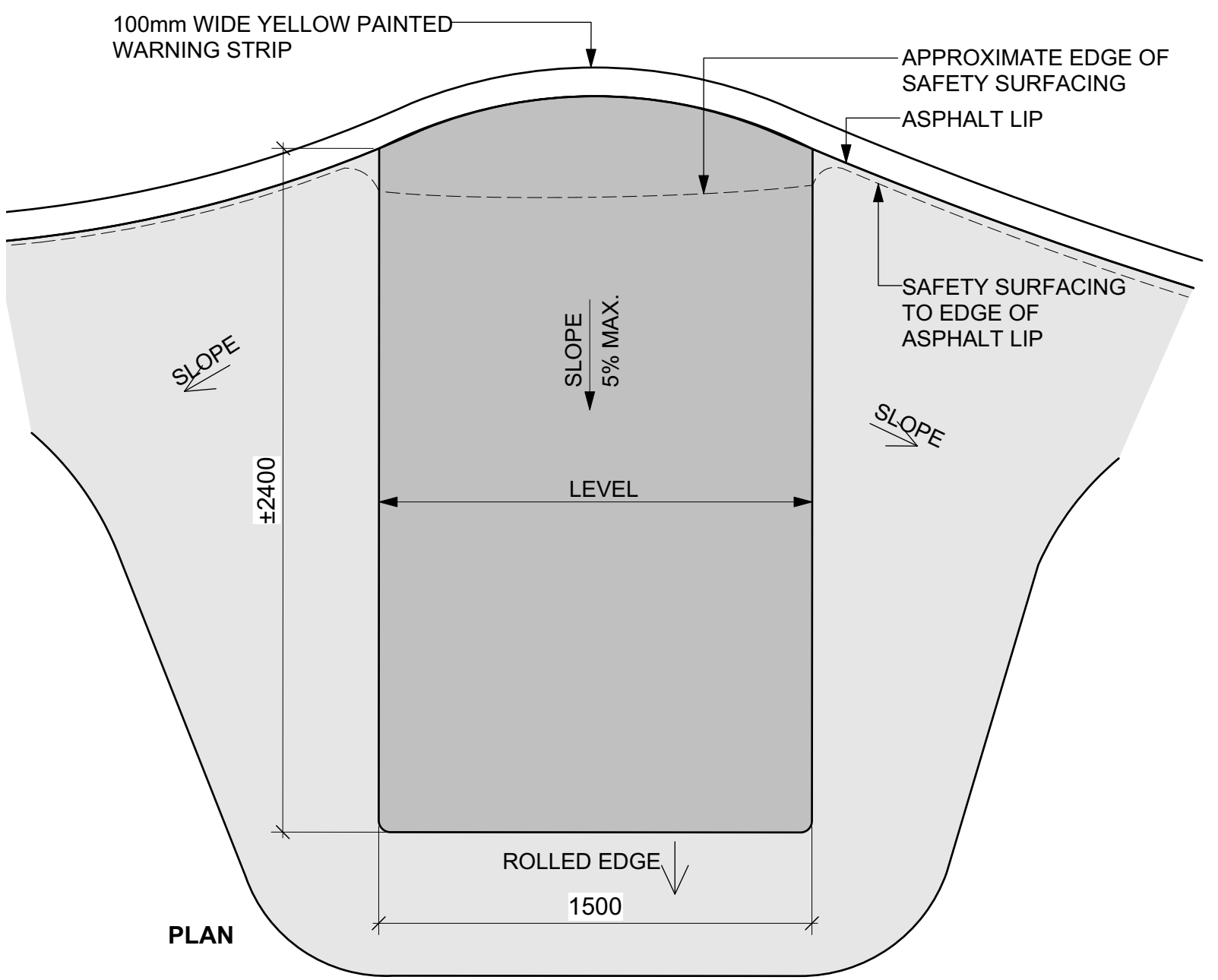
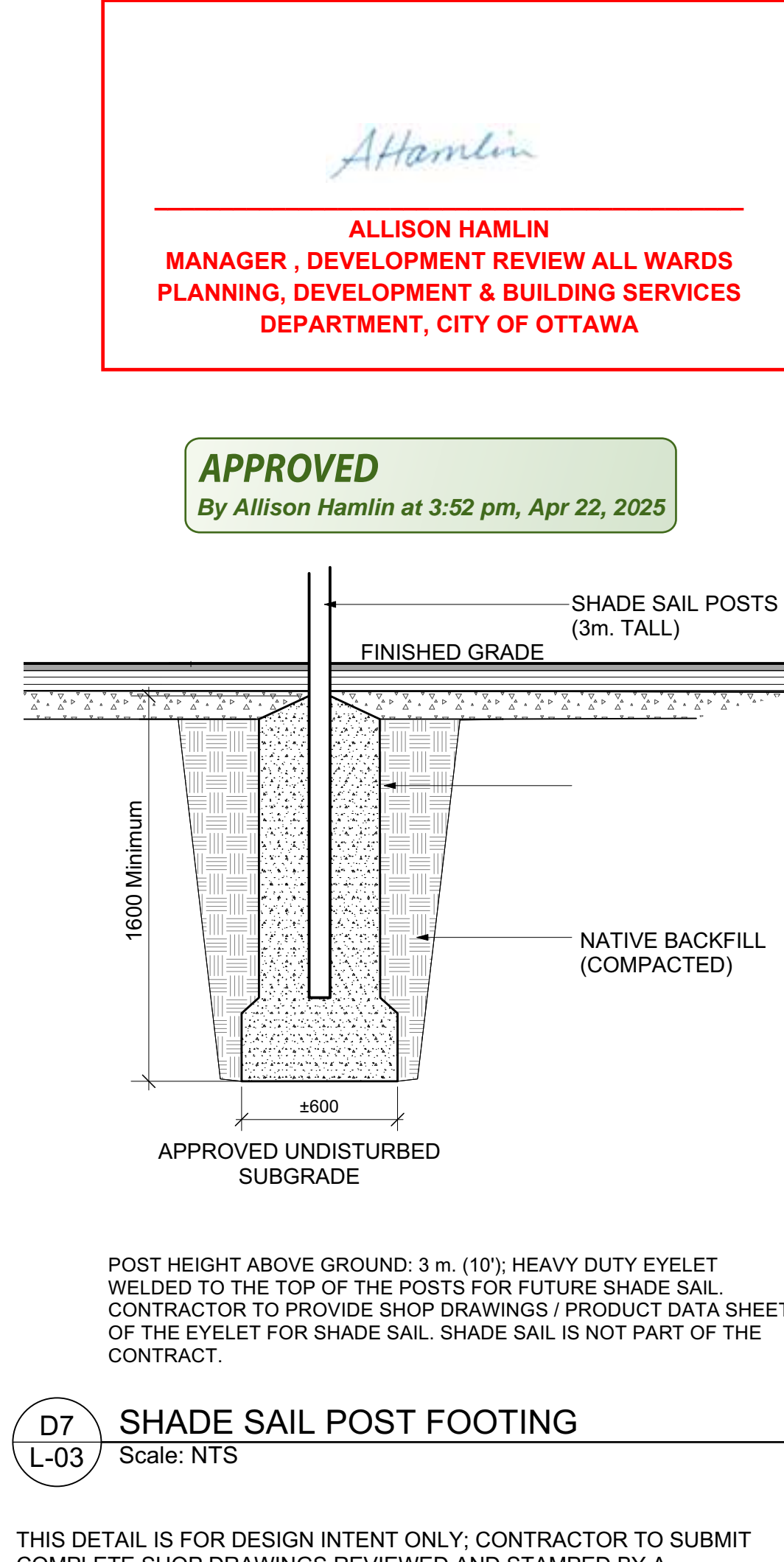
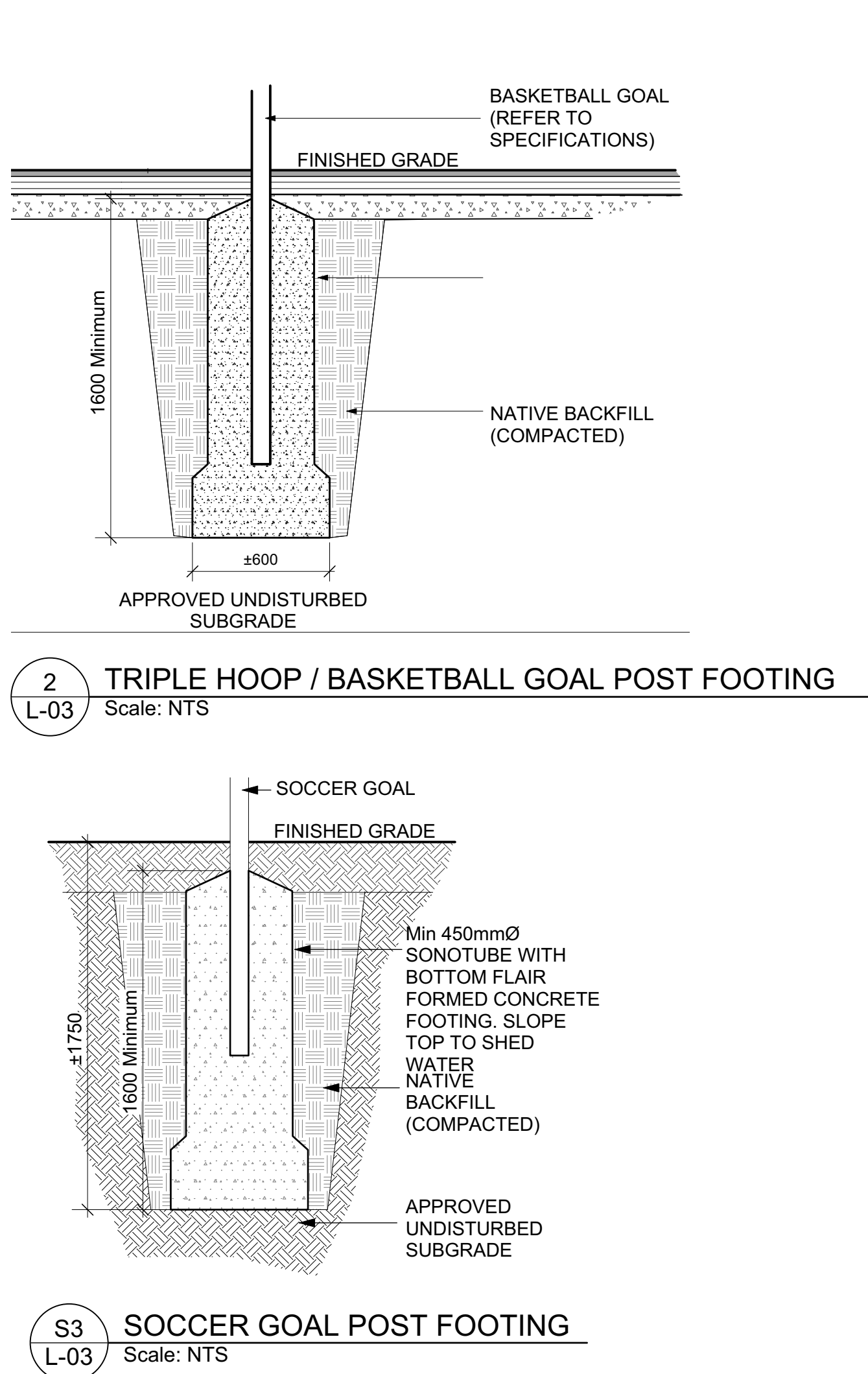
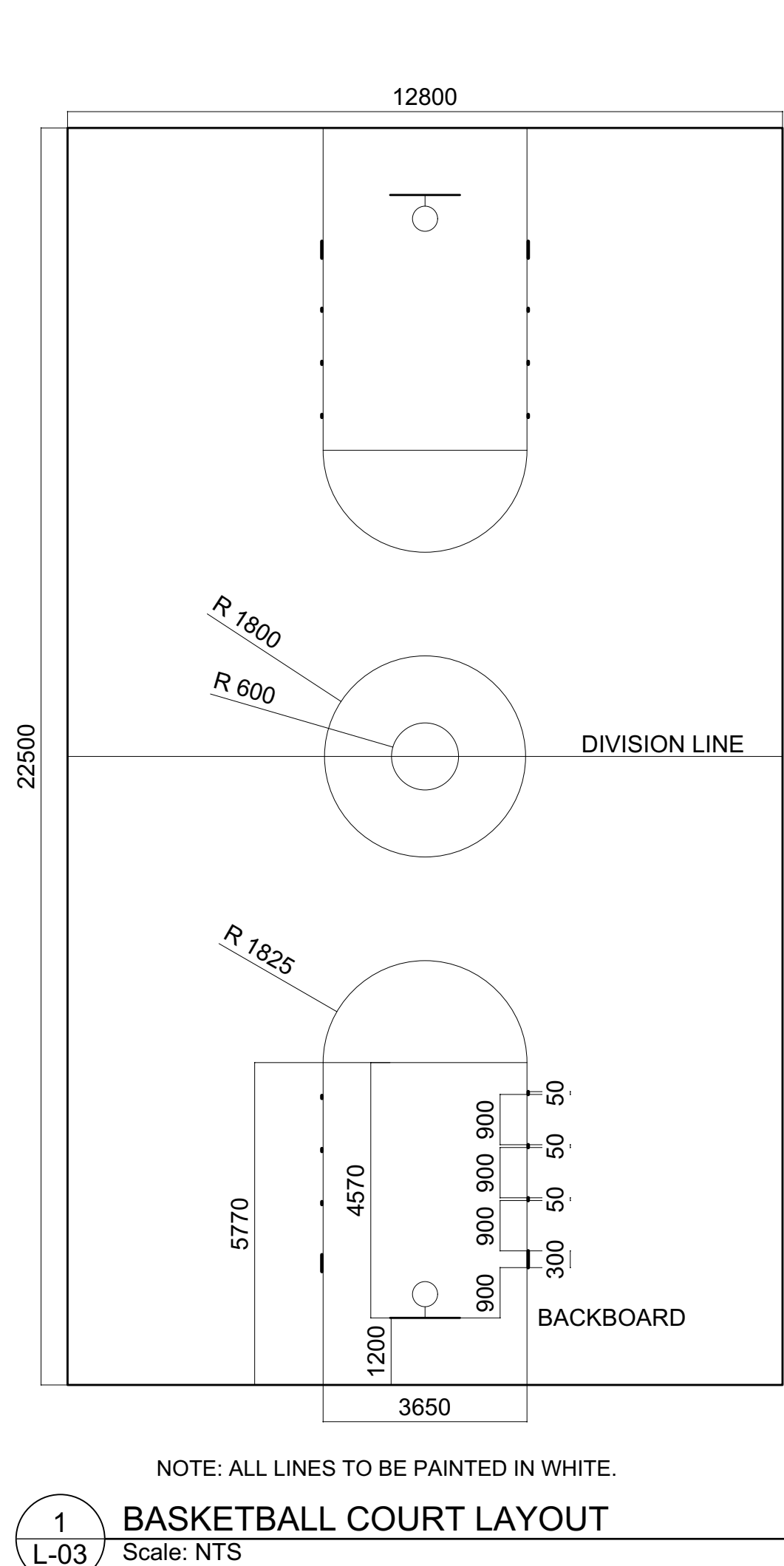




**S1 L-03 SOCCER FIELD LAYOUT**  
Scale: NTS



**S2 L-03 SOCCER GOAL SCREEN**  
Scale: NTS



**Equiparc**

**EP 5911-7-GP-QAV** Bike rack

**SPECIFICATIONS**

Structure : Steel tubes, all welded  
Finish : Hot dipped galvanized with a polyester powder coat finish

**AVAILABLE**  
5911-7 7 bikes rack

**INCLUDING**  
P Painted with a meteor grey polyester powder coat finish  
QAV This bike rack will be anchored with Ø10mm zinc plated drop-in anchors and stainless steel theft proof bolts.

**Height : 737mm Depth : 381mm Length : 1397mm Weight : 32kg**

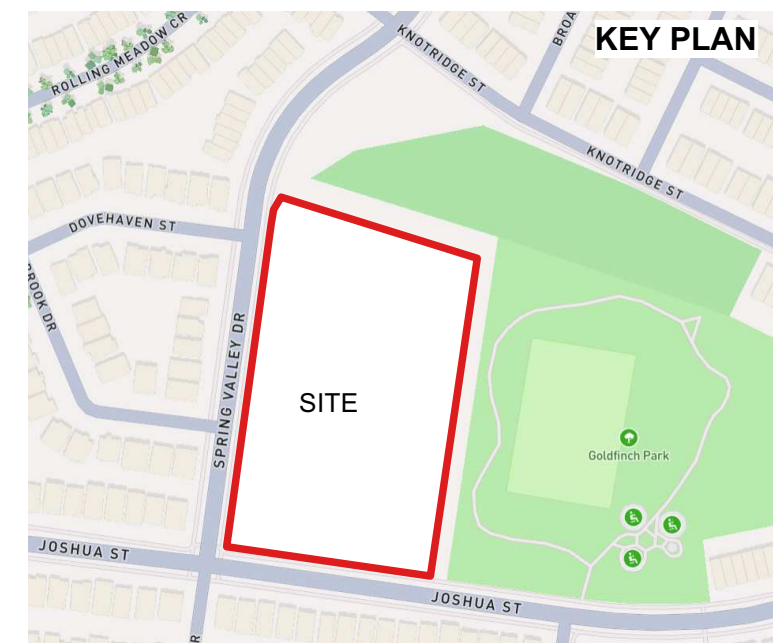
**D4 L-03 BIKE RACK - EQUIPARC EP 5911**  
Scale: NTS

Confidential information contained herein is the property of Equiparc. Intended use is limited to professionals specifying Equiparc's products and their direct clients. All information is not to be copied or disclosed to others without the written consent of Equiparc. All rights reserved - Equiparc Manufacture d'équipement de Parcs

T: 1 800 363 9204 F: 1 866 546 2538 www.equiparc.com info@equiparc.com 1001, rue James Brodie Saint-Jean-sur-Richelieu, QC Canada J2X 0C1



- GENERAL NOTES**
1. All general site information and conditions compiled from existing plans, surveys and consultant's field notes. Report all discrepancies prior to any work. No responsibility is born by the Consultant for unknown subsurface conditions.
  2. The location of the utilities is approximate only, and the exact location should be determined by consulting the municipal authorities and utility companies concerned. The Contractor shall prove the location of utilities and shall be responsible for adequate protection from damage.
  3. All dimensions shown are to be verified on site prior to any construction. No deviations are to be made from the layouts as shown on this plan without prior consultation with the Landscape Architect and Owner.
  4. Obtain approval of Landscape Architect for granular base and layout of all pavement areas prior to construction.
  5. Stake planting locations and receive approval of Landscape Architect, prior to excavation of any planting pits. No substitutions of plant material shall be made without prior approval of the Landscape Architect.
  6. Where clay is encountered proper drainage must be ensured in trees/shrub pits, prior to planting. Have method approved by Landscape Architect.
  7. All sodded areas to receive a minimum of 150mm of topsoil over graded sub-base. If sod with mesh is used, mesh to be removed completely during sodding operations. Sod shall come from an approved source and shall be laid within 24 hours of being cut in the nursery. Only nursery sod shall be used.
  8. Final subgrade is to be approved by the Landscape Architect prior to sod being laid.
  9. Maintain positive surface runoff through the entire construction period.
  10. Reinstatement all areas and items damaged as a result of construction activities.

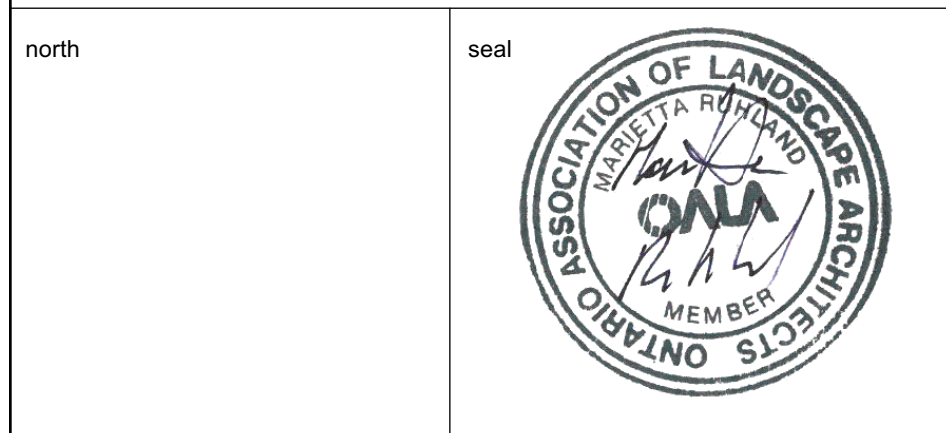


06		
05		
04		
03	Reissued for SPC	2025/04/14
02	Issued for Permit	2025/02/04
01	Issued for Coordination	2025/01/30
no.	revision	date

**N45 ARCHITECTURE INC.**  
71 Bank Street, 7th Floor - Ottawa, Ontario, K1P 5N2  
tel. 613.224.0095 fax 613.224.9811

**Ruhland & Associates Ltd**  
landscape architecture • urban design • site planning  
Ph: 613-224-4244 Fx: 613-224-1331 info@rala.ca www.rala.ca

**East Urban Centre Elementary School**  
700 Spring Valley Dr.  
Ottawa, ON, K1W 0H2.



**LANDSCAPE DETAILS**

scale	As Shown	drawn by	D.A.
date	2025-02-25	checked by	M.R.
project number	N45 24-828	drawing number	L-03
RA	24-1743	revision	

CONTRACTOR TO VERIFY ALL DIMENSIONS AND NOTIFY THE ARCHITECT OF ANY DISCREPANCIES BEFORE WORK COMMENCES

**DO NOT SCALE DRAWINGS**



