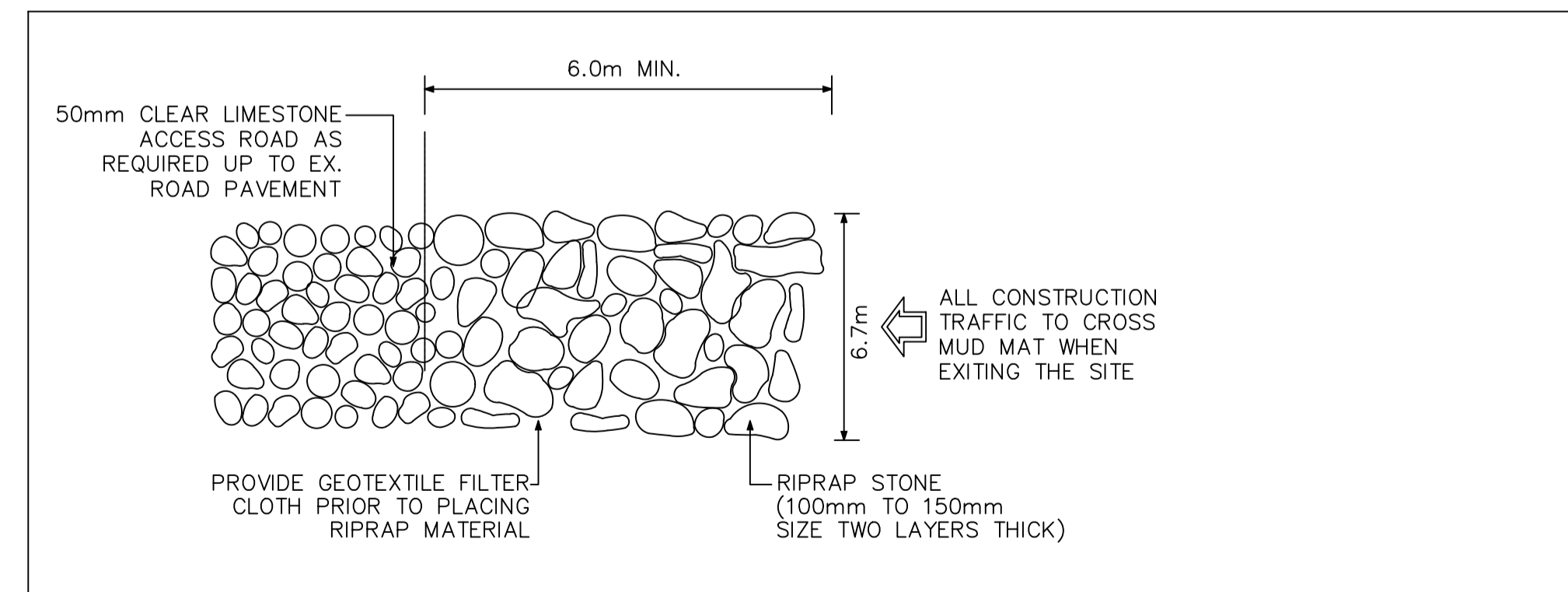


WATERMAIN COORDINATES						
P.I. No.	T/G	Description	Station	Northing	Easting	Obvert
W01	93.85	CONNECT TO EX. 150mmØ WM	0+000.0	5020628.084	352179.103	91.30
W02	93.82	150mm VB	0+008.0	5020633.856	352173.628	91.12
W03	93.81	150x150x150 TEE	0+009.5	5020634.948	352172.593	91.12
W05	93.91	45° BEND	0+023.7	5020645.485	352162.599	91.35
W06	93.81	45° BEND	0+036.9	5020659.110	352162.896	91.41
W07	93.74	45° BEND	0+093.7	5020697.692	352205.039	91.20
W08	93.94	45° BEND	0+098.5	5020702.609	352205.256	91.20
W09	93.85	150mm VB	0+101.5	5020705.340	352203.965	91.20
W10	93.44	45° BEND	0+112.3	5020715.122	352199.344	91.03
W11	93.51	45° BEND	0+116.0	5020718.553	352200.573	91.03
W12	93.34	45° BEND	0+172.0	5020751.045	352246.197	90.87
W13	93.29	CROSSING WITH 200mmØ PVC SAN	0+176.3	5020755.294	352246.991	90.87
W22	93.27	45° BEND	0+177.6	5020756.554	352247.226	90.87
W23	93.27	22.5° VERTICAL BEND	0+178.6	5020757.119	352248.051	90.87
W24	93.26	22.5° VERTICAL BEND	0+180.5	5020758.199	352249.627	90.14
W25	93.26	CONNECT TO EX. 150mm W/M	0+181.5	5020758.764	352250.452	90.14

WATERMAIN COORDINATES						
P.I. No.	T/G	Description	Station	Northing	Easting	Obvert
W03	93.81	150x150x150 TEE	0+009.5	5020634.948	352172.593	91.12
W04	93.83	CROSSING WITH 200mmØ PVC SAN	1+098.9	5020632.880	352170.405	91.11
W14	94.05	CONNECT TO EX. 150mmØ PVC W/M WITH 45° BEND	1+000.0	5020554.575	352153.957	91.65
W15	93.93	45° BEND	1+005.9	5020560.582	352154.248	91.53
W16	93.98	45° BEND	1+032.3	5020580.301	352136.355	91.58
W17	93.73	45° BEND	1+053.0	5020601.257	352136.947	91.33
W18	93.75	CROSSING WITH 250mmØ PVC STM	1+093.7	5020629.294	352166.611	91.10
W21	93.90	150 x 150mm TEE	1+044.0	5020592.162	352136.691	91.65

WATERMAIN COORDINATES						
P.I. No.	T/G	Description	Station	Northing	Easting	Obvert
W19	94.08	CONNECT TO PROPOSED BUILDING	3+000.0	5020587.923	352141.729	91.68
W20	94.01	150mm VB	3+002.9	5020590.030	352139.718	91.76
W21	93.90	150 x 150mm TEE	1+044.0	5020592.162	352136.691	91.65
W26	93.93	45° BEND	3+005.8	5020592.138	352137.708	91.53



1 MUD MAT DETAIL - PLAN VIEW
006 SCALE: N.T.S.

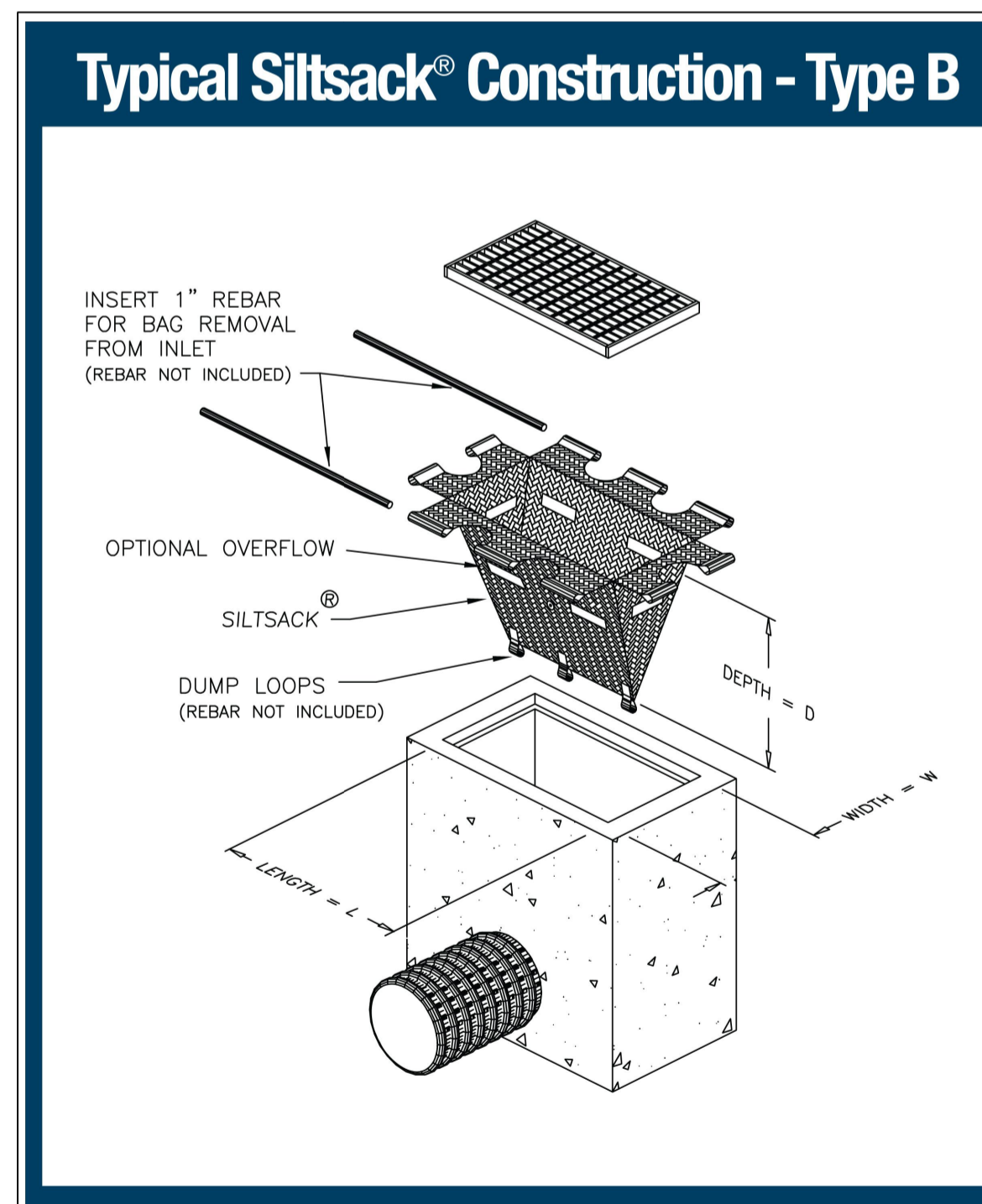
STORM STRUCTURE TABLE												
STRUCTURE	TOP OF GRATE	INLET			OUTLET	SIZE	OPSD	COVER	DIAMETER	TYPE	ICD INFO	
		INLET	INLET	INLET							HEAD (m)	FLOW (l/s)
CB 01	93.70				600X600mm	OPSD 705.010	S19.1	200	PVC SDR-35			
CBMH 100	93.65		92.190	92.090	1200mm DIA.	OPSD 701.010	S28.1	300	PVC SDR-35			
CBMH 101	93.65		92.010	91.930	1200mm DIA.	OPSD 701.010	S28.1	375	PVC SDR-35			
CBMH 102	93.50		91.870	91.860	1200mm DIA.	OPSD 701.010	S28.1	375	PVC SDR-35	1.85	80	168mm DIA. ORIFICE
STMH 100	93.69	91.600	91.450	91.450	1200mm DIA.	OPSD 701.010	S24.1	600	EX.GONC			
STMH 101	93.72	91.930	91.800	91.730	1200mm DIA.	OPSD 701.010	S24.1	450	PVC SDR-35			
STMH 102	94.04		92.280	92.220	1200mm DIA.	OPSD 701.010	S24.1	250	PVC SDR-35			
STMH 103	94.04		91.650	91.650	1200mm DIA.	OPSD 701.010	S24.1	450	PVC SDR-35			
STMH(EFO4)	93.61		91.840	91.830	1200mm DIA.	OPSD 701.010	S24.1	375	PVC SDR-35			

SAN STRUCTURE TABLE							
STRUCTURE ID	TOP OF GRATE	INVERT			DESCRIPTION		
		INLET	INLET	OUTLET	SIZE	OPSD	COVER
Ex. SAMH 2	93.30	89.970	89.980	89.960	1200mm DIA.	OPSD-701.010	S24
SAMH 100	93.54		90.680	90.440	1200mm DIA.	OPSD-701.010	S24
SAMH 101	93.84		90.870	90.810	1200mm DIA.	OPSD-701.010	S24
SAMH 102	93.90		91.390	91.320	1200mm DIA.	OPSD-701.010	S24
SAMH 103	94.07		91.810	91.750	1200mm DIA.	OPSD-701.010	S24

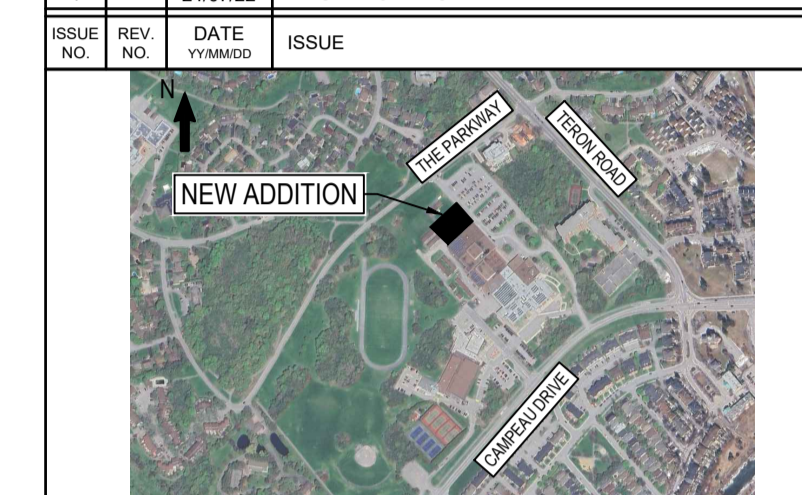
Obvert	Invert	Obvert	Invert			
				Obvert	Invert	Clearance
1	250mmØ PVC STM	92.209	91.959	0.609	Clearance Above	91.350 91.200 150mmØ PVC W/M
2	200mmØ PVC SAN	91.769	91.569	0.139	Clearance Above	91.430 91.280 150mmØ PVC W/M
3	200mmØ PVC SAN	90.218	90.018	0.522	Clearance Under	90.890 90.740 150mmØ PVC W/M

*Note: Provide Concrete Encased for crossing clearance less than 0.30m

Post Development Storm Drainage Area Table								
Catchment Area	Total (ha)	Grass	Gravel	Asphalt	Outlet Structure	Ponding Area (m ²)	Ponding Depth	Ponding Volume
A-1	0.164	0.2	0.7	0.9				
A-2a	0.110	0.078		0.032	CB 01	46.30	0.09	1.39
A-2b	0.163	0.127		0.036	CBMH 100	98.30	0.14	4.59
A-2c	0.140	0.107		0.033	CBMH 101	139.30	0.14	6.50
A-2d	0.164	0.052		0.112	CBMH 102	383.61	0.29	37.08
A-3	0.025	0.000		0.025				
Total	0.766	0.364		0.402		667.51		49.56



2	24/12/12	REVISED AS PER CITY COMMENTS
1	24/07/22	ISSUED FOR SPC

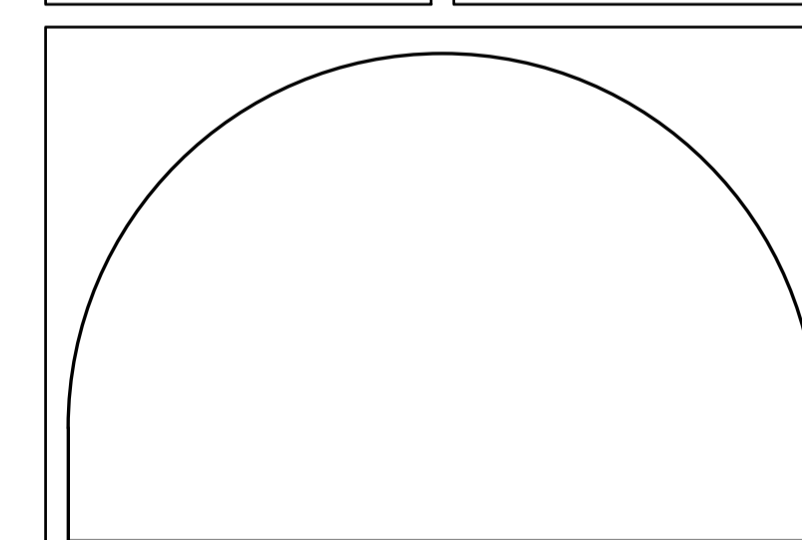
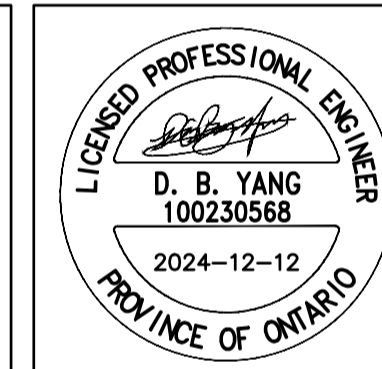


BEARING NOTE:
ELEVATIONS SHOWN ARE GEODETIC AND ARE REFERRED TO GEODETIC DATUM CGVD-1028-1078 (MONUMENT NO. 1977076).
BENCHMARK #1 N 5020635.734 E 352184.386 Z 94.96
BENCHMARK #2 N 5020635.341 E 352174.857 Z 95.85
BENCHMARK #3 N 5020432.891 E 352406.889 Z 95.53



WSP CANADA INC.
2611 QUEENSWAY DRIVE, SUITE 300
OTTAWA, ONTARIO
CANADA K2B 8K2
PHONE: 613-829-2800
WWW.WSP.COM

DISCLAIMER: THIS DRAWING AND DESIGN IS COPYRIGHT PROTECTED WHICH SHALL NOT BE USED, REPRODUCED OR REVISED WITHOUT WRITTEN PERMISSION BY WSP. THE CONTRACTOR SHALL CHECK AND VERIFY ALL DIMENSIONS AND UTILITY LOCATIONS AND REPORT ALL ERRORS AND OMISSIONS PRIOR TO COMMENCING WORK.

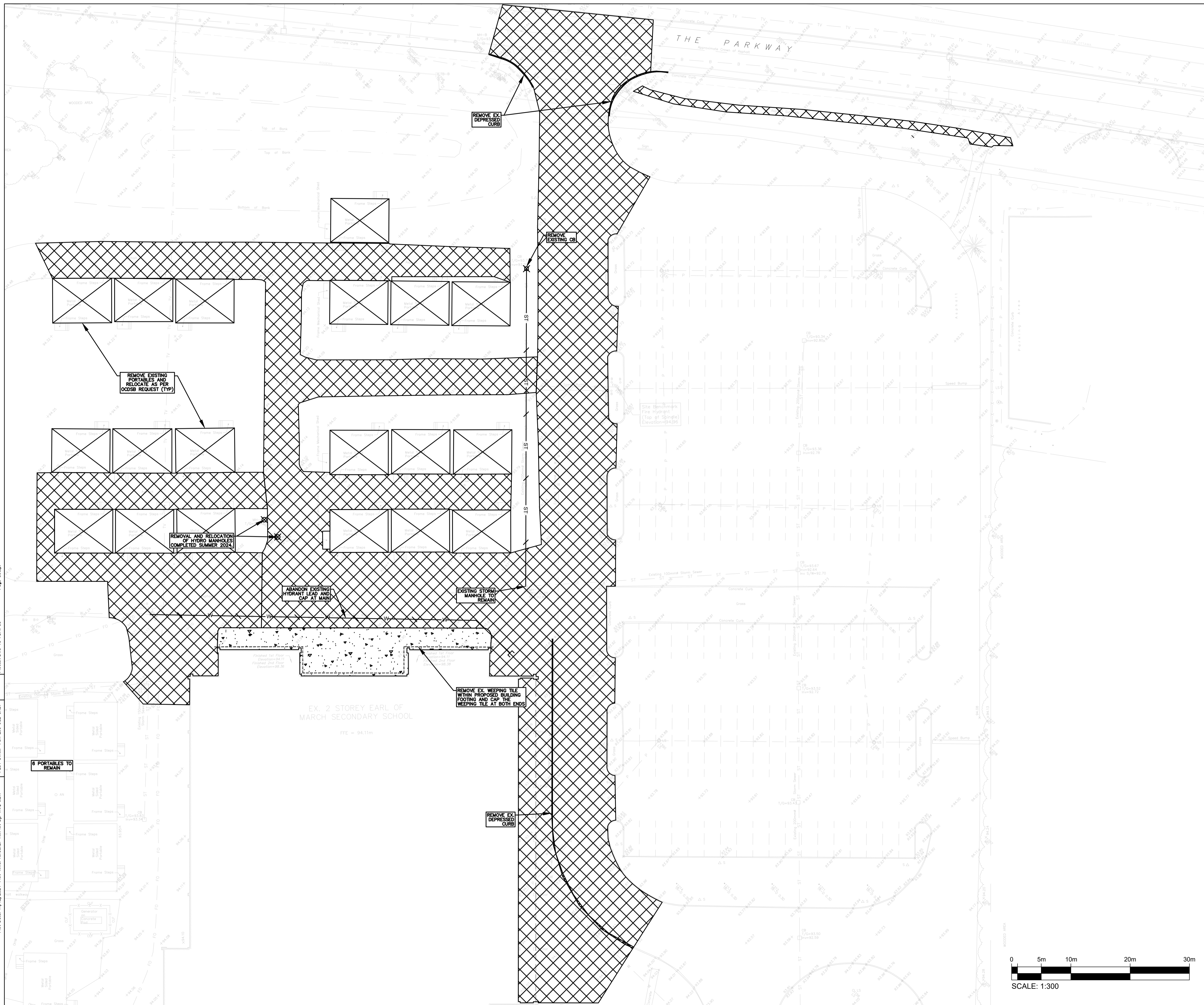


EDWARD J. CUHACI & ASSOCIATES ARCHITECTS Inc.
171 Slater St, Suite 100, Ottawa, Ontario, K1P 5H7
Fax: (613) 236-1944 Telephone: (613) 236-7135 E-mail: info@cuhaci.com

PROJECT TITLE/TITRE DU PROJET
EARL OF MARCH SCHOOL ADDITION
4 THE PARKWAY
OTTAWA, ON, K2K 1Y4

DRAWING TITLE/TITRE DU DESSIN
DETAILS

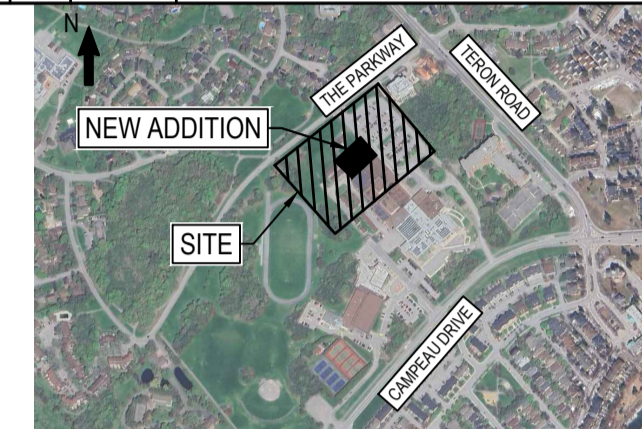
SCALE ECHELLE	AS SHOWN	PROJ. No CA0020000.3018	ISSUE No 2	REV. No 0
DRAWN BY DESSINE PAR	ZAUT	DRAWING/DESSIN		
CHECKED BY VERIFIE PAR	DY	C02		
DATE	DECEMBER 2024			



OTTAWA-CARLETON
DISTRICT SCHOOL BOARD

2	24/12/12	REVISED AS PER CITY COMMENTS
1	24/07/22	ISSUED FOR SPC

ISSUE NO.	REV. NO.	DATE	ISSUE
-----------	----------	------	-------



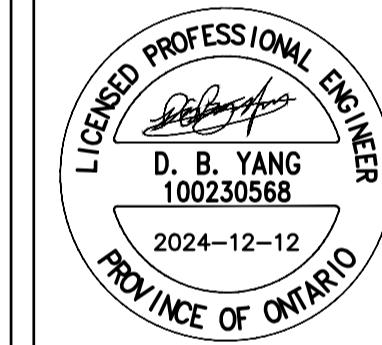
BEARING NOTE:
ELEVATIONS SHOWN ARE GEODETIC AND ARE REFERRED TO GEODETIC DATUM CGVD-1985 (MONUMENT NO. 1977076).
BENCHMARK #1 N 5020335.734 E 332194.396 Z 94.96
BENCHMARK #2 N 5020335.341 E 332319.457 Z 95.05
BENCHMARK #3 N 5020332.891 E 332406.889 Z 95.53



WSP CANADA INC.
2611 QUEENSWAY DRIVE, SUITE 300
OTTAWA, ONTARIO
CANADA K2B 8K2
PHONE: 613-829-2800
WWW.WSP.COM

DISCLAIMER: THIS DRAWING AND DESIGN IS COPYRIGHT PROTECTED WHICH SHALL NOT BE USED, REPRODUCED OR REVISED WITHOUT WRITTEN PERMISSION BY WSP. THE CONTRACTOR SHALL CHECK AND VERIFY ALL DIMENSIONS AND UTILITY LOCATIONS AND REPORT ALL ERRORS AND OMISSIONS PRIOR TO COMMENCING WORK.

COPYRIGHT: 2023



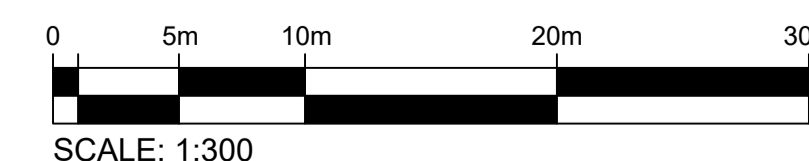
EDWARD J. CUHACI
& ASSOCIATES ARCHITECTS Inc.
171 Slater St., Suite 100, Ottawa, Ontario, K1P 5H7
Fax: (613) 236-1944 Telephone: (613) 236-7135 E-mail: info@cuhaci.com

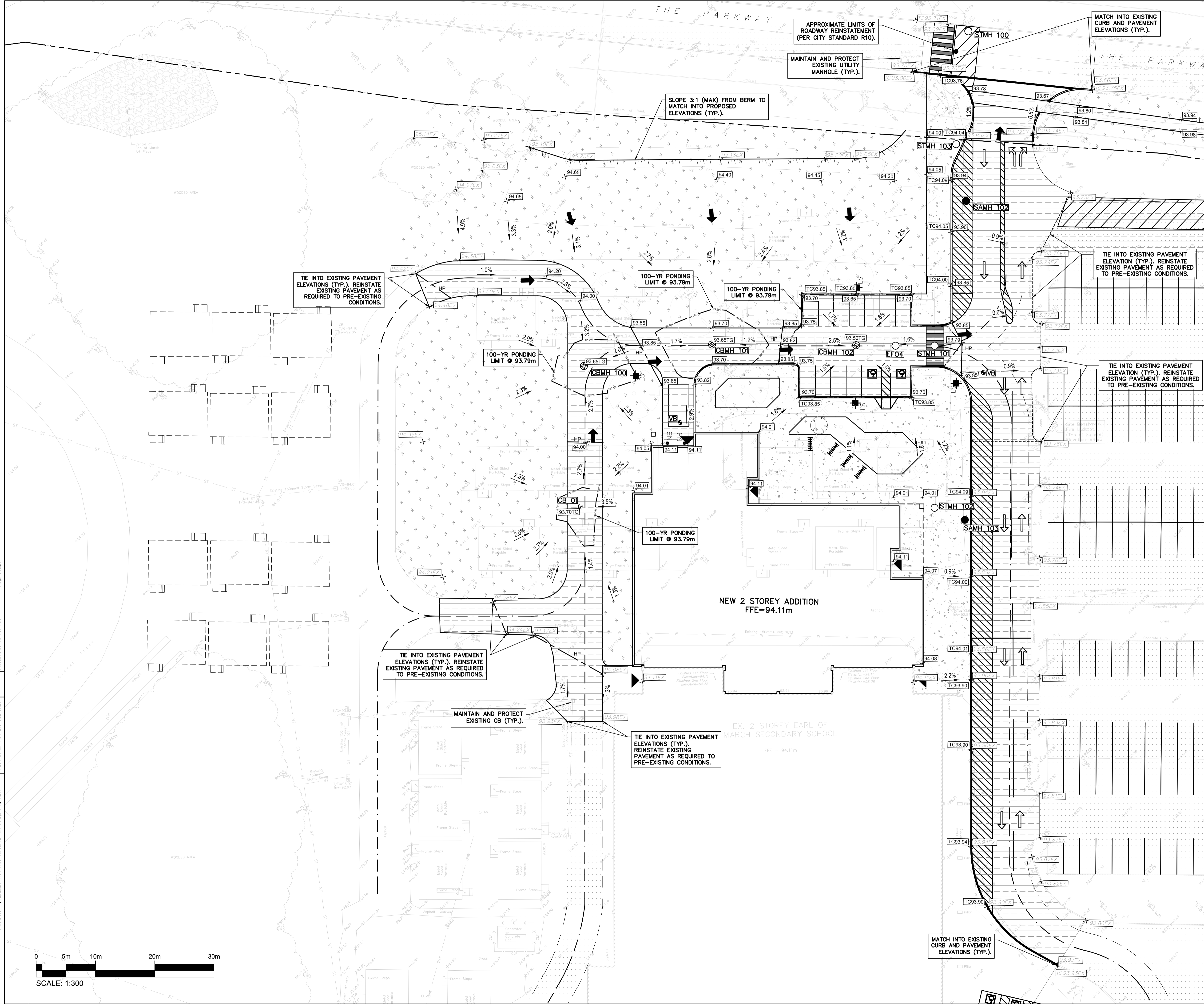
PROJECT TITLE/TITRE DU PROJET
EARL OF MARCH
SCHOOL ADDITION
4 THE PARKWAY
OTTAWA, ON, K2K 1Y4

DRAWING TITLE/TITRE DU DESSIN

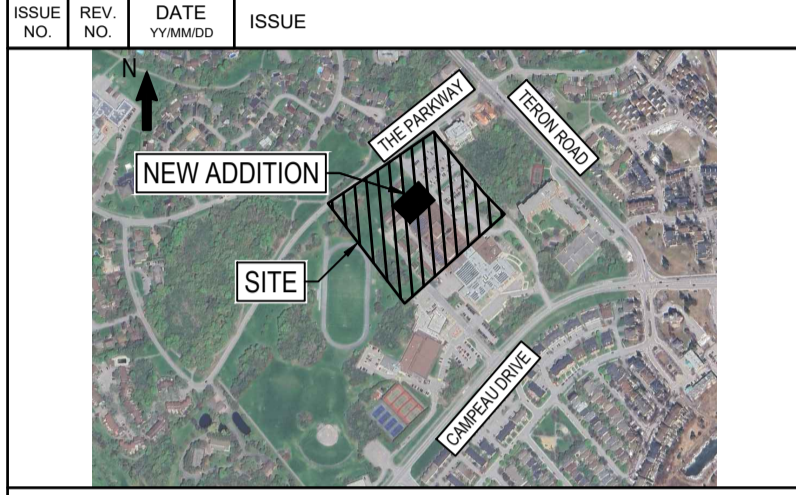
REMOVALS
PLAN

SCALE ECHELLE	1:300	PROJ. No. CA002000.3018	ISSUE No. 2	REV. No. 0
DRAWN BY DESSINE PAR	ZAUT	DRAWING/DESSIN		
CHECKED BY VERIFIE PAR	DY	C03		
DATE	DECEMBER 2024	ACAD FILE/FICHER:		





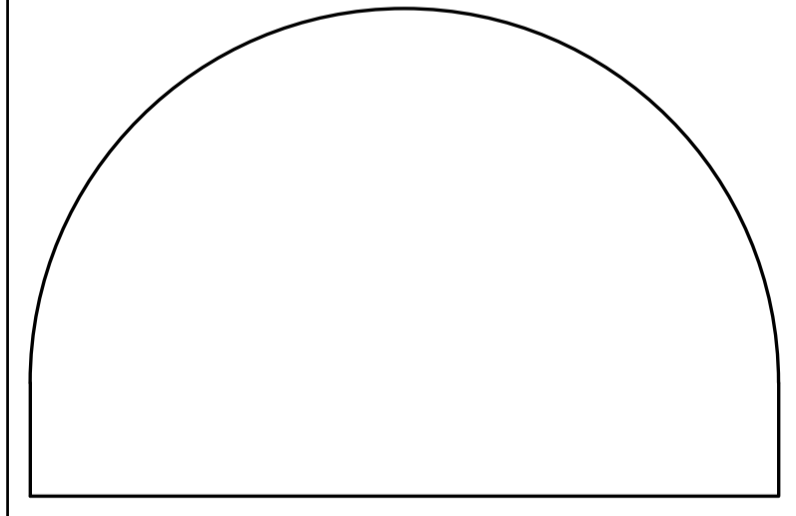
2	24/12/12	REVISED AS PER CITY COMMENTS
1	24/07/22	ISSUED FOR SPC



BEARING NOTE:
ELEVATIONS SHOWN ARE GEODETIC AND ARE REFERRED TO GEODETIC DATUM CGVD-1985 (MONUMENT NO. 1977076).
BENCHMARK #1 N 5202635 734 E 332194 386 2.94 96
BENCHMARK #2 N 5202635 341 E 332319 457 2.93 96
BENCHMARK #3 N 5202432 891 E 332405 889 2.95 93

WSP CANADA INC.
2611 QUEENSWAY DRIVE, SUITE 300
OTTAWA, ONTARIO
CANADA K2B 8K2
PHONE: 613-829-2800
WWW.WSP.COM

DISCLAIMER: THIS DRAWING AND DESIGN IS COPYRIGHT PROTECTED WHICH SHALL NOT BE USED, REPRODUCED OR REVISED WITHOUT WRITTEN PERMISSION BY WSP. THE CONTRACTOR SHALL CHECK AND VERIFY ALL DIMENSIONS AND UTILITY LOCATIONS AND REPORT ALL ERRORS AND OMISSIONS PRIOR TO COMMENCING WORK.

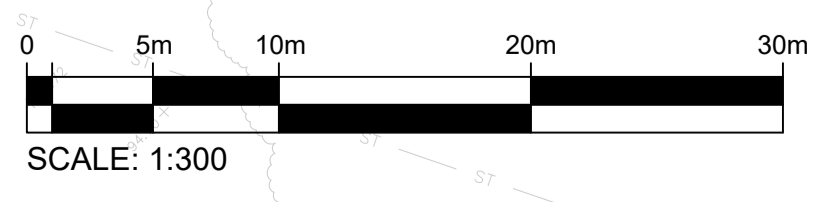


EDWARD J. CUHACI
& ASSOCIATES ARCHITECTS Inc.
171 Slater St, Suite 100, Ottawa, Ontario, K1P 5H7
Fax: (613) 236-1944 Telephone: (613) 236-7135 E-mail: info@cuhaci.com

PROJECT TITLE/TITRE DU PROJET
**EARL OF MARCH
SCHOOL ADDITION**
4 THE PARKWAY
OTTAWA, ON, K2K 1Y4

DRAWING TITLE/TITRE DU DESSIN GRADING PLAN			
SCALE ECHELLE	1:300	PROJ. No CA0020000.3018	ISSUE No 2
DRAWN BY DESSINE PAR	ZAUT	DRAWING/DESSIN	REV. No 0
CHECKED BY VERIFIE PAR	DY	C04A	
DATE	DECEMBER 2024	ACAD FILE/FICHER:	

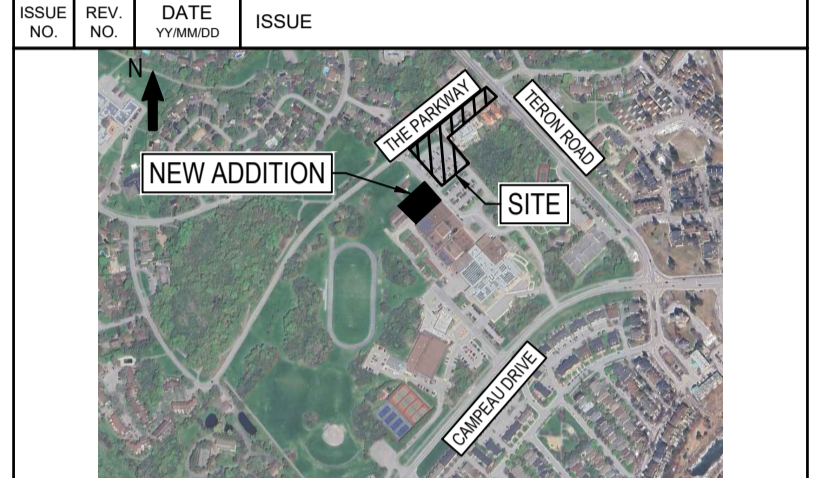
Plot Date: 11/27/2024 Plot Time: 10:38:42 AM Plot By: TAN, JBT
 PLOT STAMP FOR E.P. USE ONLY
 Plotter: DWG TO PDF.PCS
 Page Setup:





OTTAWA-CARLETON DISTRICT SCHOOL BOARD

2	24/12/12	REVISED AS PER CITY COMMENTS	
1	24/07/22	ISSUED FOR SPC	

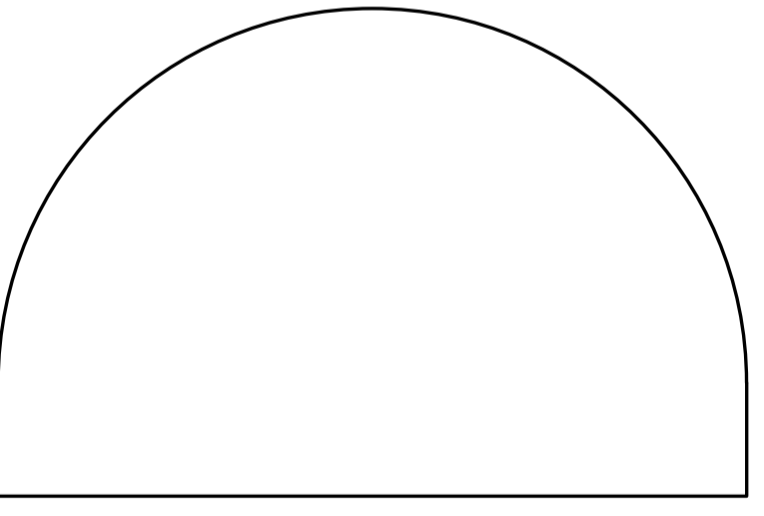
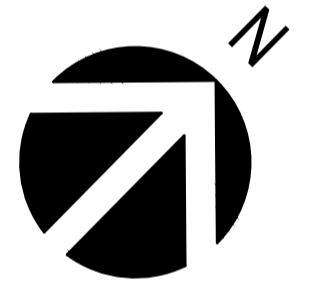


BEARING NOTE
ELEVATIONS SHOWN ARE GEODETIC AND ARE REFERRED TO GEODETIC DATUM CGVD-1028-1078 (MONUMENT NO. 1977076)
BENCHMARK #1 N 5020335.734 E 332184.386 Z 94.96
BENCHMARK #2 N 5020335.341 E 332319.457 Z 95.95
BENCHMARK #3 N 5020432.891 E 332406.889 Z 95.53



WSP CANADA INC.
2611 QUEENSVIEW DRIVE, SUITE 300
OTTAWA, ONTARIO
CANADA K2B 8K2
PHONE: 613-829-2800
WWW.WSP.COM

DISCLAIMER: THIS DRAWING AND DESIGN IS COPYRIGHT PROTECTED WHICH SHALL NOT BE USED, REPRODUCED OR REVISED WITHOUT WRITTEN PERMISSION BY WSP. THE CONTRACTOR SHALL CHECK AND VERIFY ALL DIMENSIONS AND UTILITY LOCATIONS AND REPORT ALL ERRORS AND OMISSIONS PRIOR TO COMMENCING WORK.
COPYRIGHT: 2023



EDWARD J. CUHACI & ASSOCIATES ARCHITECTS Inc.
171 Slater St., Suite 100, Ottawa, Ontario, K1P 5H7
Fax: (613) 236-1944 Telephone: (613) 236-7135 E-mail: info@cuhaci.com

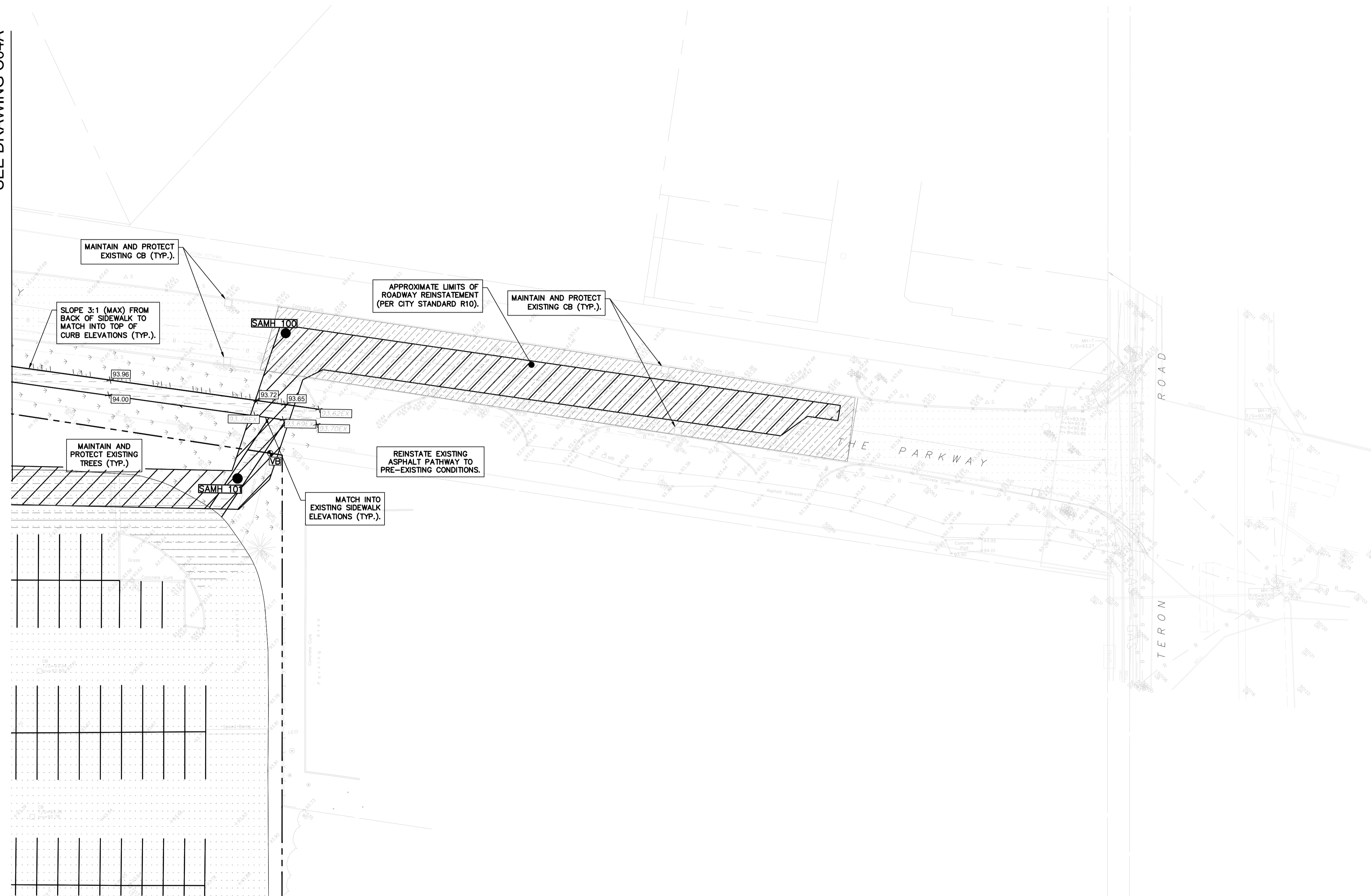
PROJECT TITLE/TITRE DU PROJET
EARL OF MARCH SCHOOL ADDITION
4 THE PARKWAY
OTTAWA, ON, K2K 1Y4

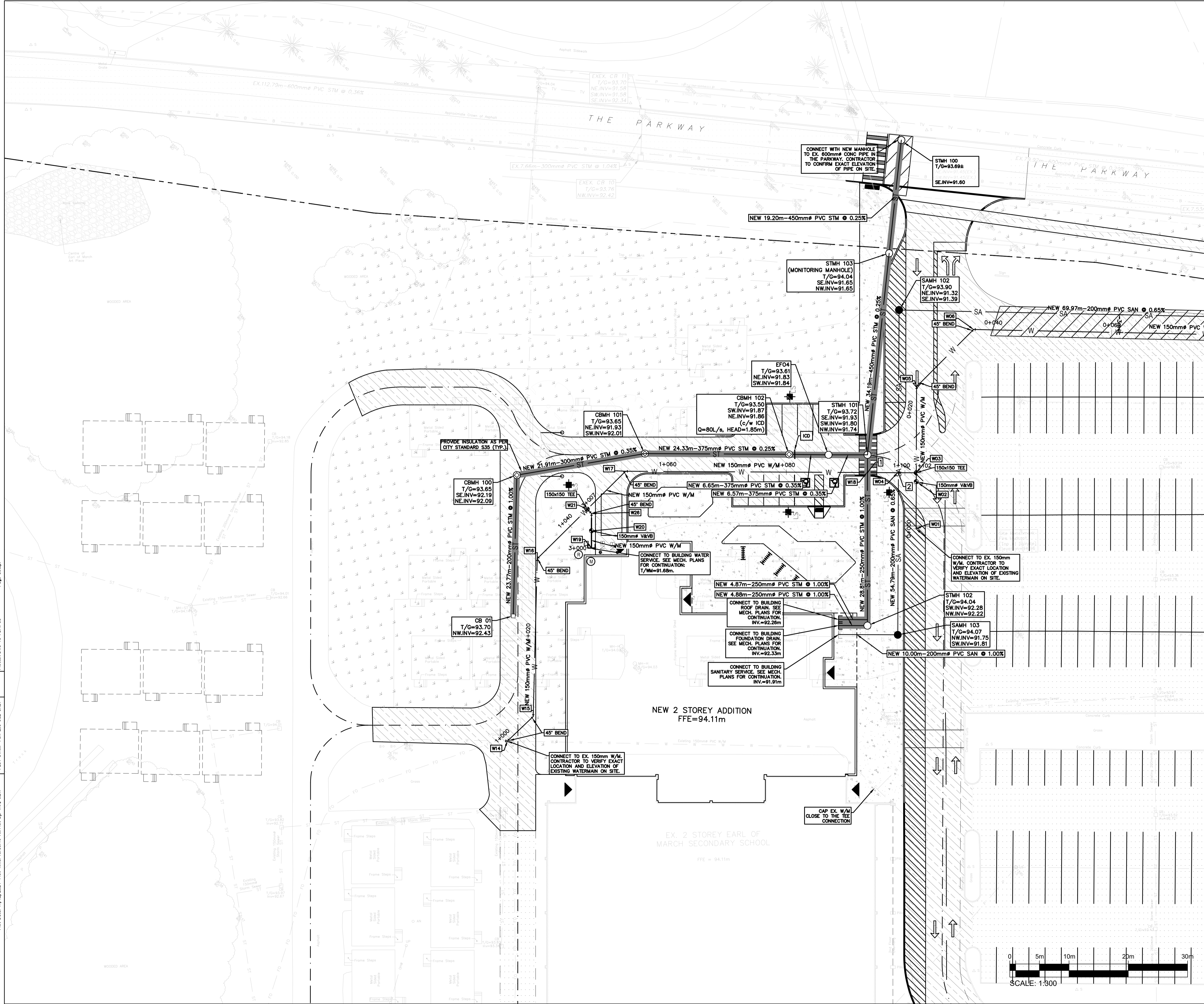
DRAWING TITLE/TITRE DU DESSIN
GRADING PLAN

SCALE ECHELLE	1:300	PROJ. No CA0020000.3018	ISSUE No 2	REV. No 0
DRAWN BY DESSINE PAR	ZAUT	DRAWING/DESSIN		
CHECKED BY VERIFIE PAR	DY	C04B		
DATE	DECEMBER 2024	ACAD FILE/FICHER:		



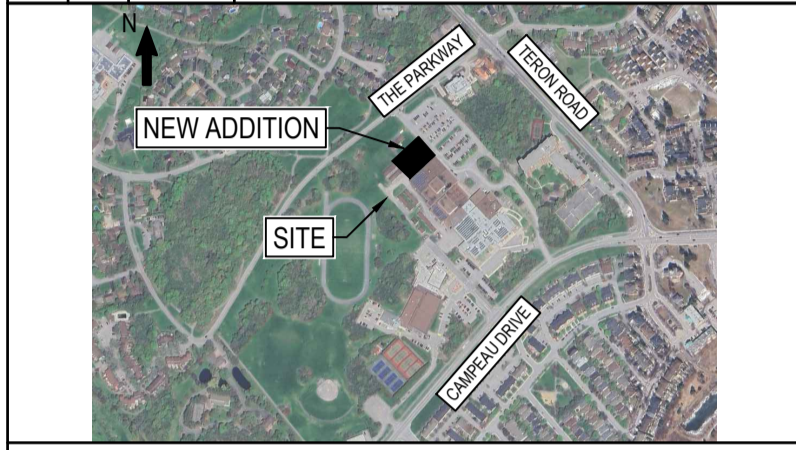
MATCHING LINE
SEE DRAWING C04A





OTTAWA-CARLETON
DISTRICT SCHOOL BOARD

2	24/12/12	REVISED AS PER CITY COMMENTS
1	24/07/22	ISSUED FOR SPC

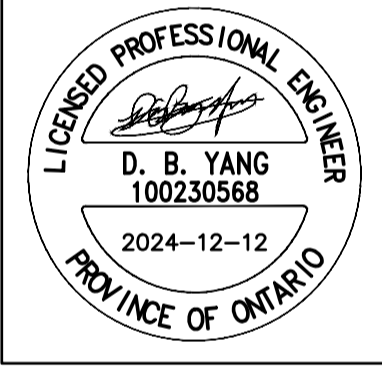
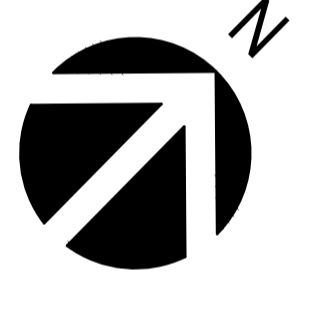


BEARING NOTE:
ELEVATIONS SHOWN ARE GEODETIC AND ARE REFERRED TO GEODETIC DATUM CGVD-1985 (MONUMENT NO. 1977016).
BENCHMARK #1 N 5202635 734 E 332184 396 2.94 96
BENCHMARK #2 N 5202635 341 E 332318 407 2.95 96
BENCHMARK #3 N 5202432 891 E 332406 889 2.95 93



WSP CANADA INC.
2611 QUEENSVIEW DRIVE, SUITE 300
OTTAWA, ONTARIO
CANADA K2B 8K2
PHONE: 613-829-2800
WWW.WSP.COM

DISCLAIMER: THIS DRAWING AND DESIGN IS COPYRIGHT PROTECTED WHICH SHALL NOT BE USED, REPRODUCED OR REVISED WITHOUT WRITTEN PERMISSION BY WSP. THE CONTRACTOR SHALL CHECK AND VERIFY ALL DIMENSIONS AND UTILITY LOCATIONS AND REPORT ALL ERRORS AND OMISSIONS PRIOR TO COMMENCING WORK.



EDWARD J. CUHACI
& ASSOCIATES ARCHITECTS Inc.
171 Slater St, Suite 100, Ottawa, Ontario, K1P 5H7
Fax: (613) 236-1944 Telephone: (613) 236-7135 E-mail: info@cuhaci.com

PROJECT TITLE/TITRE DU PROJET
EARL OF MARCH
SCHOOL ADDITION
4 THE PARKWAY
OTTAWA, ON, K2K 1Y4

DRAWING TITLE/TITRE DU DESSIN
**SERVICING
PLAN**

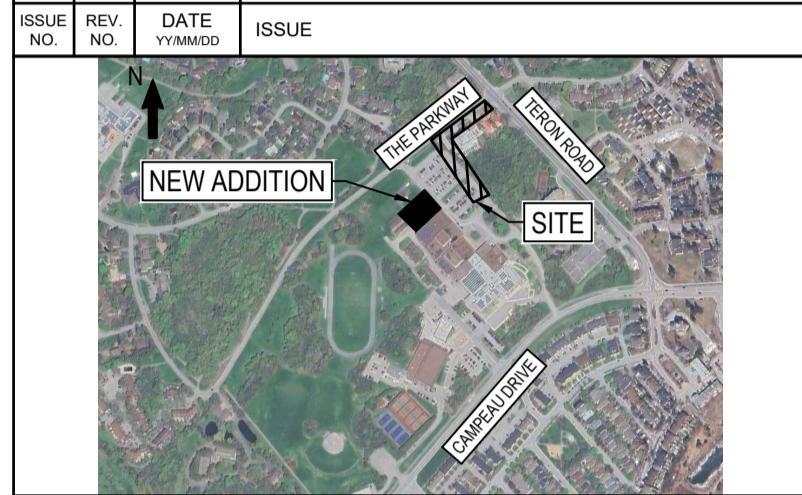
SCALE ECHELLE	1:300	PROJ. No CA0020000.3018	ISSUE No 2	REV. No 0
DRAWN BY DESSINE PAR	ZAUT	DRAWING/DESSIN		
CHECKED BY VERIFIE PAR	DY	C05A		
DATE	DECEMBER 2024	ACAD FILE/FICHER:		

Plot Date: 11/27/2024 Plot Time: 10:28:18 AM Plot By: TAN, JBT1
PLOT STAMP FOR E&P USE ONLY
PLOTTER: DWG TO PDF PLOT
Page Setup:



OTTAWA-CARLETON DISTRICT SCHOOL BOARD

REV. NO.	DATE	DESCRIPTION
2	24/12/12	REVISED AS PER CITY COMMENTS
1	24/07/22	ISSUED FOR SPC



BEARING NOTE
ELEVATIONS SHOWN ARE GEODETIC AND ARE REFERRED TO GEODETIC DATUM CGVD-1928-1978 (MONUMENT NO. 19770769)
BENCHMARK #1 N 5020335 734 E 332184 396 Z 94 96
BENCHMARK #2 N 5020335 341 E 332319 457 Z 94 96
BENCHMARK #3 N 5020432 991 E 332406 889 Z 95 93



WSP CANADA INC.
2611 QUEENSVIEW DRIVE, SUITE 300
OTTAWA, ONTARIO
CANADA K2B 8K2
PHONE: 613-829-2800
WWW.WSP.COM

DISCLAIMER: THIS DRAWING AND DESIGN IS COPYRIGHT PROTECTED WHICH SHALL NOT BE USED, REPRODUCED OR REVISED WITHOUT WRITTEN PERMISSION BY WSP. THE CONTRACTOR SHALL CHECK AND VERIFY ALL DIMENSIONS AND UTILITY LOCATIONS AND REPORT ALL ERRORS AND OMISSIONS PRIOR TO COMMENCING WORK.



EDWARD J. CUHACI & ASSOCIATES ARCHITECTS Inc.
171 Slater St, Suite 100, Ottawa, Ontario, K1P 5H7
Fax: (613) 236-1944 Telephone: (613) 236-7135 E-mail: info@cuhaci.com

PROJECT TITLE/TITRE DU PROJET
EARL OF MARCH SCHOOL ADDITION
4 THE PARKWAY
OTTAWA, ON, K2K 1Y4

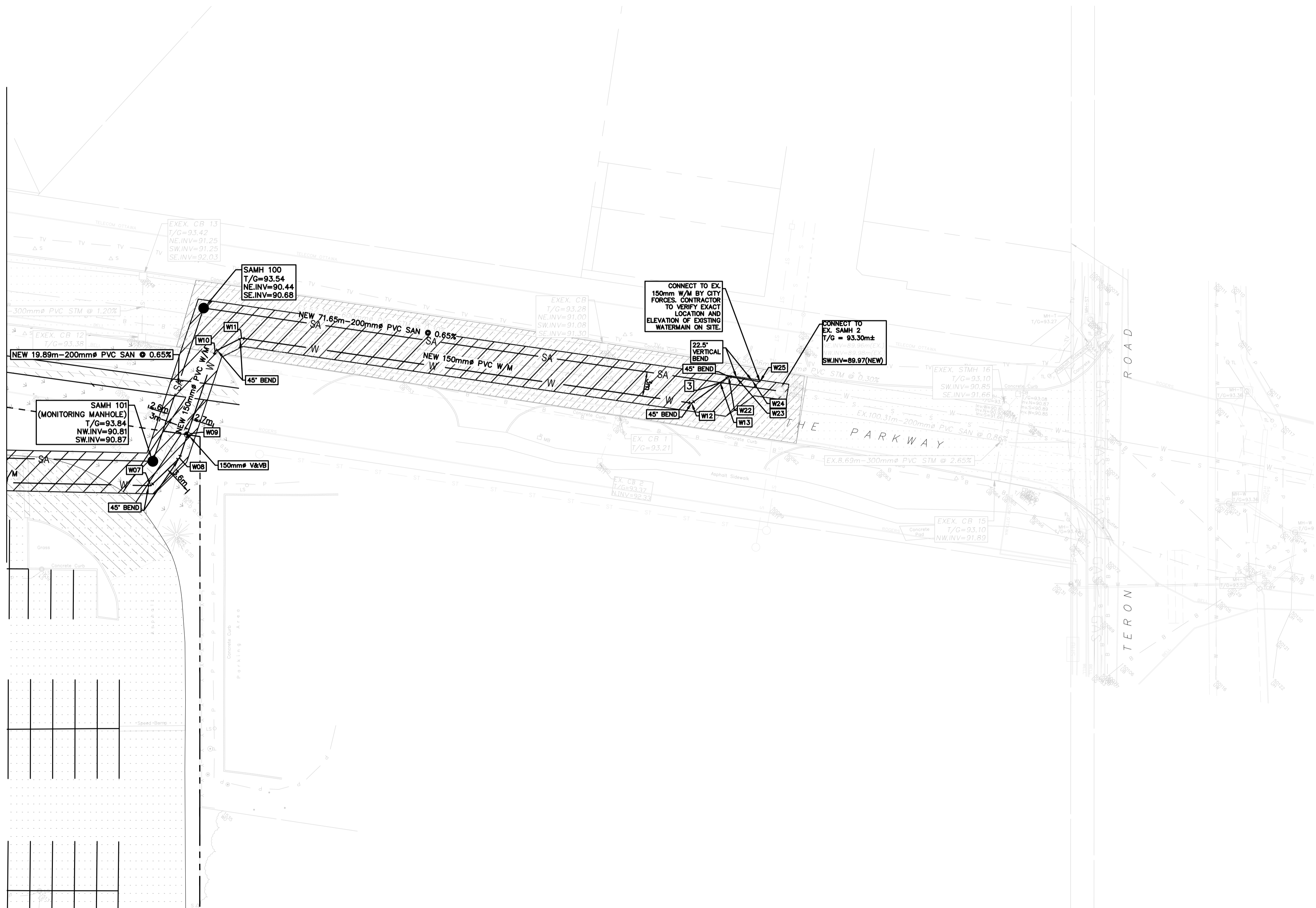
DRAWING TITLE/TITRE DU DESSIN
SERVICING PLAN

SCALE	PROJ. No	ISSUE No	REV. No
ECHELLE 1:300	CA0020000.3018	2	0

DRAWN BY / DESSINE PAR	CHECKED BY / VERIFIE PAR	DATE	DRAWING/DESSIN
ZAUT	DY	DECEMBER 2024	C05B



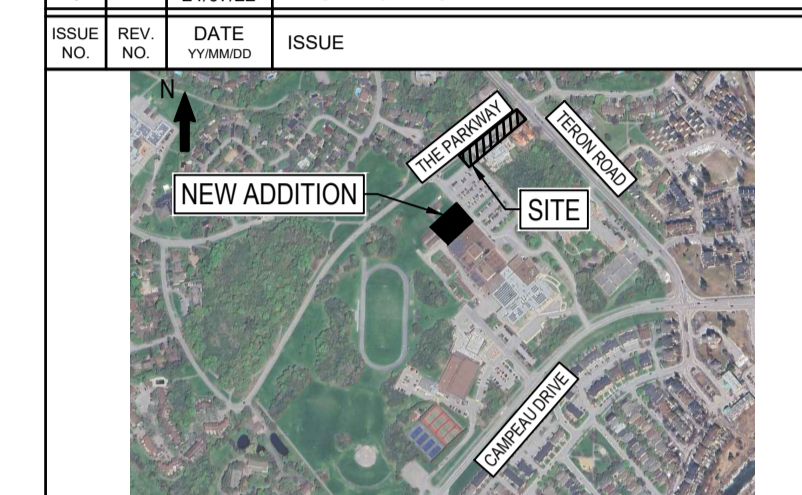
MATCHING LINE
SEE DRAWING C05A





OTTAWA-CARLETON DISTRICT SCHOOL BOARD

2	24/12/12	REVISED AS PER CITY COMMENTS
1	24/07/22	ISSUED FOR SPC

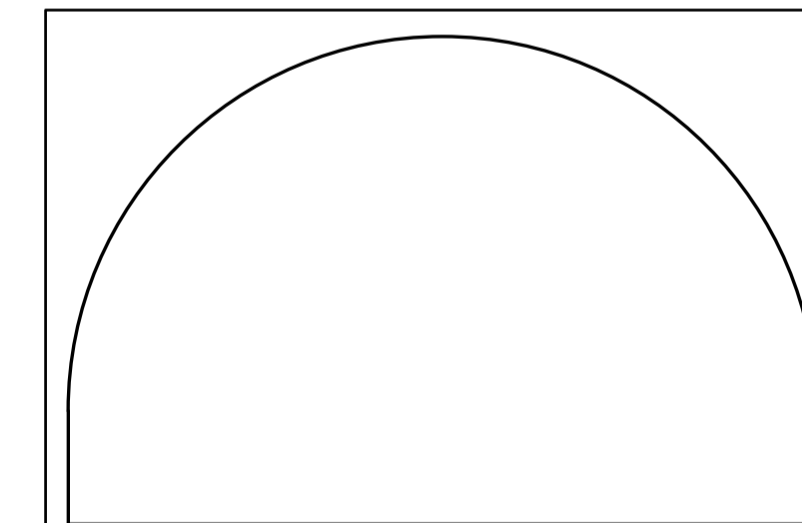
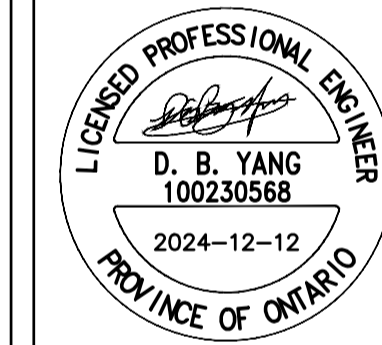


BEARING NOTE:
 ELEVATIONS SHOWN ARE GEODETIC AND ARE REFERRED TO GEODETIC DATUM CGVD-1028-1078 (MONUMENT NO. 19770765)
 BENCHMARK #1 N 5020336.734 E 332194.386 Z 94.96
 BENCHMARK #2 N 5020335.341 E 332319.497 Z 95.95
 BENCHMARK #3 N 5020432.891 E 332406.889 Z 95.53



WSP CANADA INC.
 2611 QUEENSVIEW DRIVE, SUITE 300
 OTTAWA, ONTARIO
 CANADA K2B 8K2
 PHONE: 613-829-2800
 WWW.WSP.COM

DISCLAIMER: THIS DRAWING AND DESIGN IS COPYRIGHT PROTECTED WHICH SHALL NOT BE USED, REPRODUCED OR REVISED WITHOUT WRITTEN PERMISSION BY WSP. THE CONTRACTOR SHALL CHECK AND VERIFY ALL DIMENSIONS AND UTILITY LOCATIONS AND REPORT ALL ERRORS AND OMISSIONS PRIOR TO COMMENCING WORK.



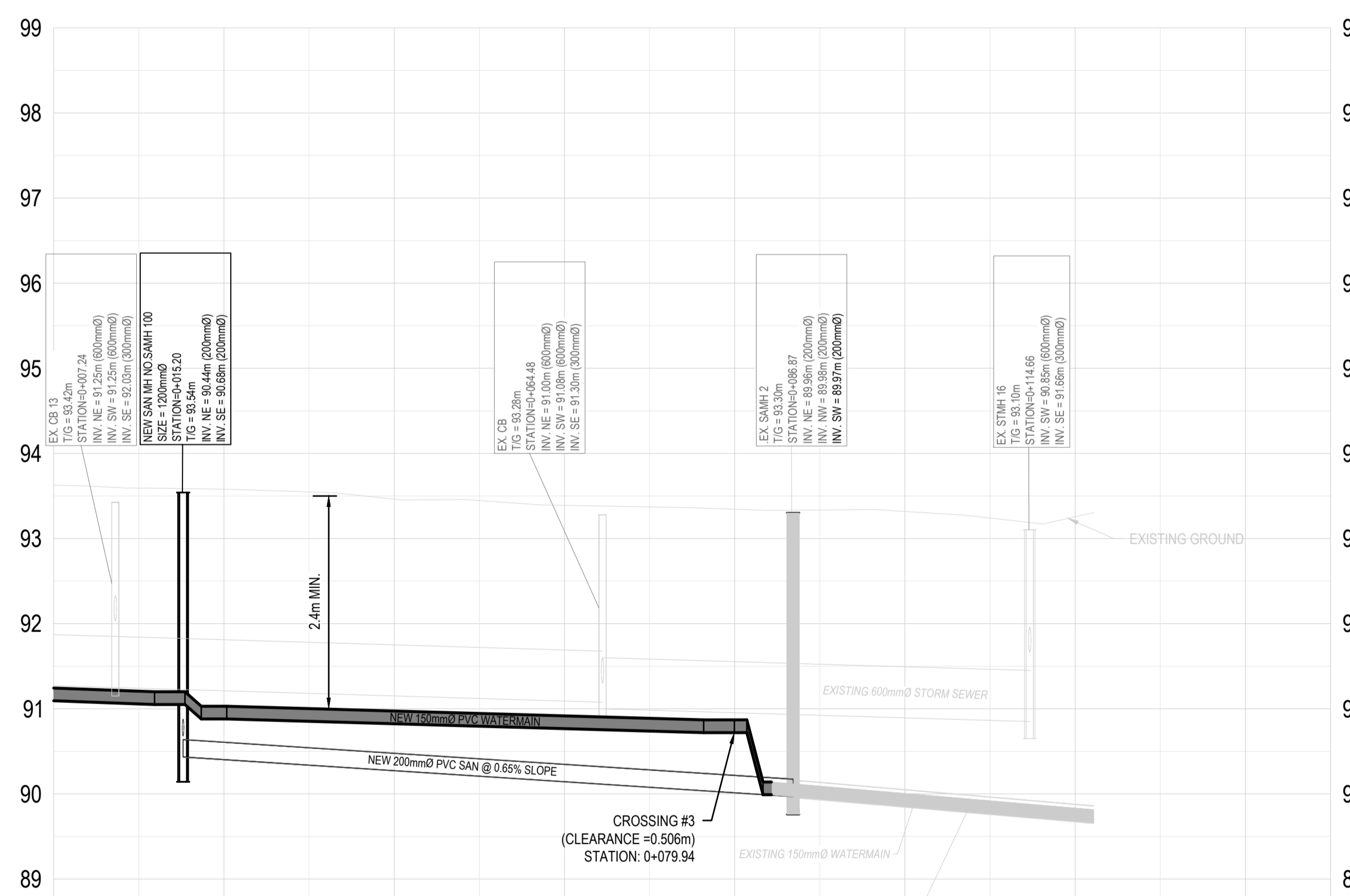
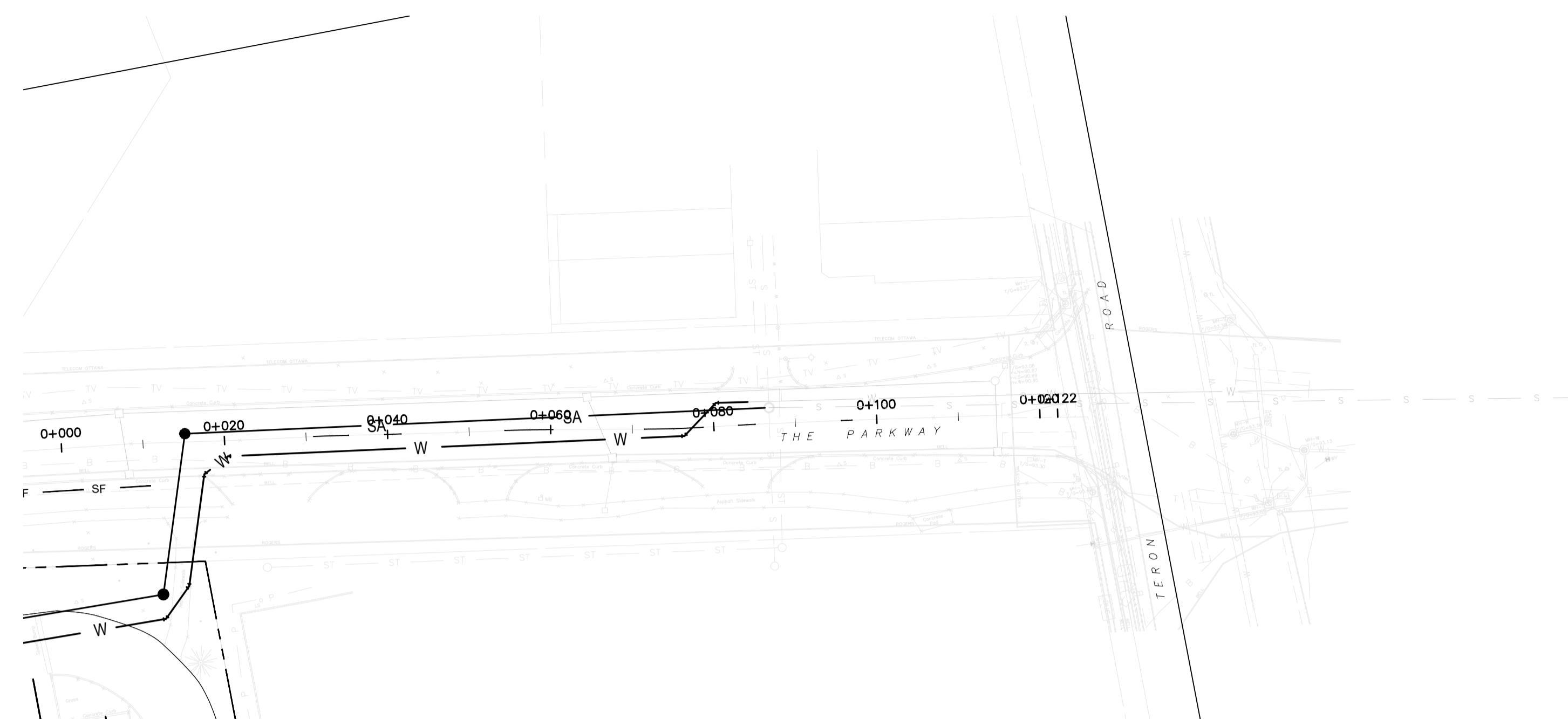
EDWARD J. CUHACI & ASSOCIATES ARCHITECTS Inc.
 171 Slater St, Suite 100, Ottawa, Ontario, K1P 5H7
 Fax: (613) 236-1944 Telephone: (613) 236-7135 E-mail: info@cuhaci.com

PROJECT TITLE/TITRE DU PROJET
EARL OF MARCH SCHOOL ADDITION
 4 THE PARKWAY
 OTTAWA, ON, K2K 1Y4

DRAWING TITLE/TITRE DU DESSIN

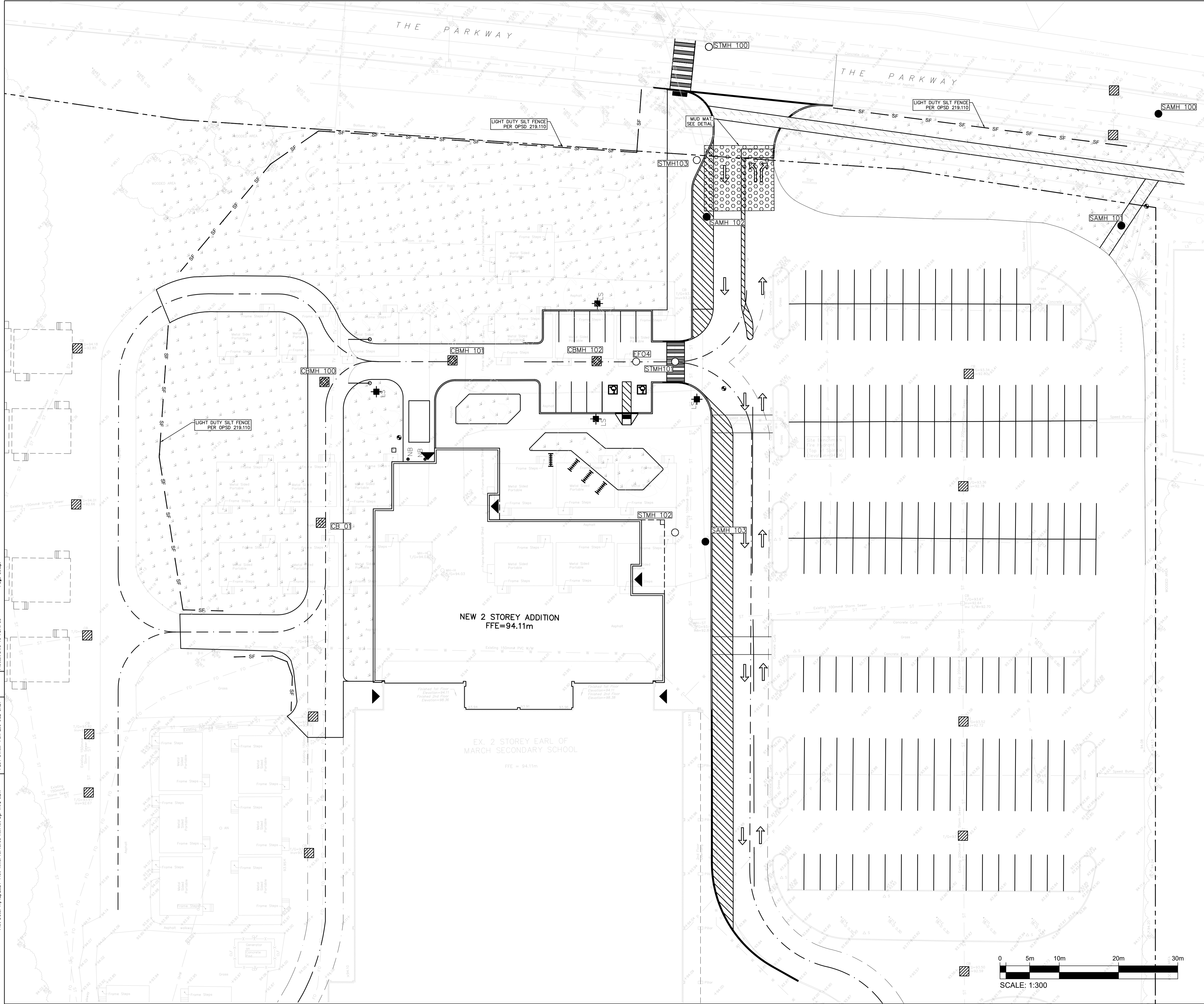
ROAD PROFILE

SCALE	1:500	PROJ. No	CA0020000.3018	ISSUE No	2	REV. No	0
DRAWN BY	ZAUT	DRAWING/DESSIN	C06				
CHECKED BY	DY						
DATE	DECEMBER 2024	ACAD FILE/FICHIER:					



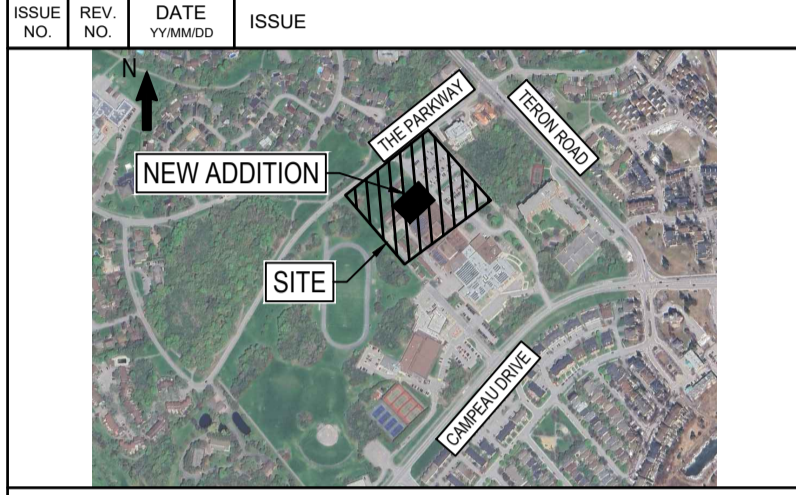
STATION	0+000	0+020	0+040	0+060	0+080	0+100	0+120	0+140	0+150	STATION
CENTERLINE GRADE FINISHED	93.03	93.32	93.42	93.52	93.52	93.22	93.26			CENTERLINE GRADE
STORM SEWER	EX. 57.39m 600mm STM SEWER @ 0.30%				EX. 50.06m 600mm STM SEWER @ 0.30%					STORM SEWER INVERT
SANITARY SEWER		NEW 71.65m 200mm SAN SEWER @ 0.65%				EX. 100.31m 200mm SAN @ 0.86%				SANITARY SEWER
TOP OF WATERMAIN	91.24	90.40	90.97	90.92	90.87	90.01	89.53			TOP OF WATERMAIN

ROAD PROFILE OF PARKWAY
 SCALE: H:1:500, V:1:50



OTTAWA-CARLETON
DISTRICT SCHOOL BOARD

2	24/12/12	REVISED AS PER CITY COMMENTS
1	24/07/22	ISSUED FOR SPC

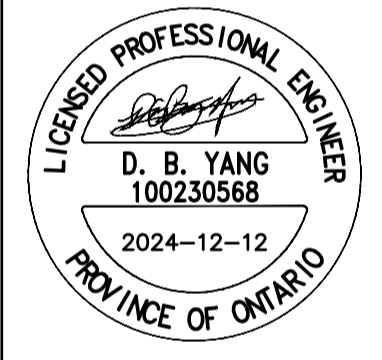
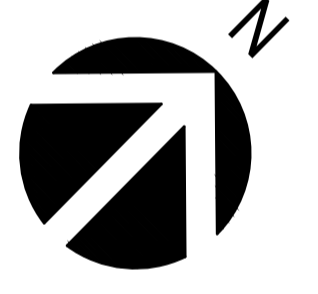


BEARING NOTE:
ELEVATIONS SHOWN ARE GEODETIC AND ARE REFERRED TO GEODETIC DATUM CGVD-1028-1078 (MONUMENT NO. 19770765)
BENCHMARK #1 N 5202635.734 E 332194.396 Z 94.96
BENCHMARK #2 N 5202635.341 E 332319.457 Z 95.05
BENCHMARK #3 N 5202432.891 E 332406.889 Z 95.53



WSP CANADA INC.
2611 QUEENSVIEW DRIVE, SUITE 300
OTTAWA, ONTARIO
CANADA K2B 8K2
PHONE: 613-829-2800
WWW.WSP.COM

DISCLAIMER: THIS DRAWING AND DESIGN IS COPYRIGHT PROTECTED WHICH SHALL NOT BE USED, REPRODUCED OR REVISED WITHOUT WRITTEN PERMISSION BY WSP. THE CONTRACTOR SHALL CHECK AND VERIFY ALL DIMENSIONS AND UTILITY LOCATIONS AND REPORT ALL ERRORS AND OMISSIONS PRIOR TO COMMENCING WORK.



EDWARD J. CUHACI & ASSOCIATES ARCHITECTS Inc.
171 Slater St., Suite 100, Ottawa, Ontario, K1P 5H7
Fax: (613) 236-1944 Telephone: (613) 236-7135 E-mail: info@cuhaci.com

PROJECT TITLE/TITRE DU PROJET
EARL OF MARCH SCHOOL ADDITION
4 THE PARKWAY
OTTAWA, ON, K2K 1Y4

DRAWING TITLE/TITRE DU DESSIN
EROSION AND SEDIMENT CONTROL PLAN

SCALE ECHELLE	1:300	PROJ. No CA0020000.3018	ISSUE No 2	REV. No 0
DRAWN BY DESSINE PAR	ZAUT	DRAWING/DESSIN		
CHECKED BY VERIFIE PAR	DY	C07A		
DATE	DECEMBER 2024	ACAD FILE/FICHER:		



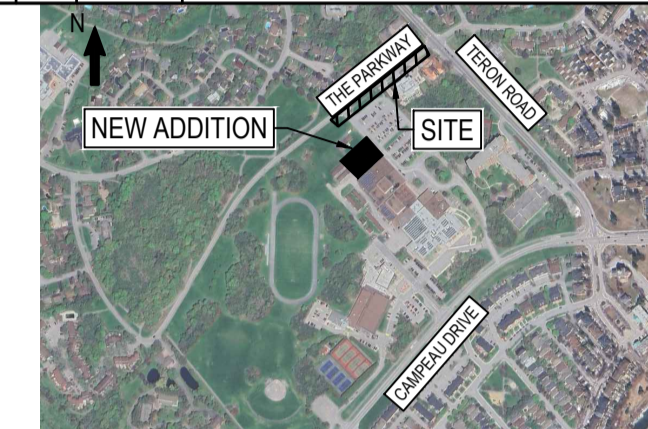
Plot Date: 11/27/2024 Plot Time: 10:45:05 AM Plot By: TAN, JET1
PLOT STAMP FOR E.P. USE ONLY
PLOTTER: DWG TO PDF.PC3
Page Setup:



OTTAWA-CARLETON
DISTRICT SCHOOL BOARD

2	24/12/12	REVISED AS PER CITY COMMENTS
1	24/07/22	ISSUED FOR SPC

ISSUE NO.	REV. NO.	DATE	ISSUE

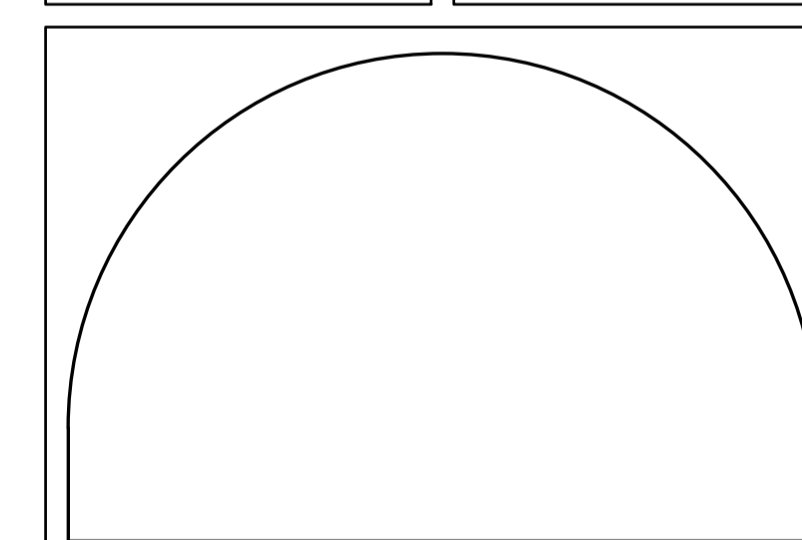
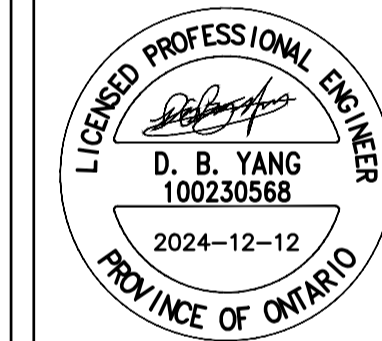


BEARING NOTE:
ELEVATIONS SHOWN ARE GEODETIC AND ARE REFERRED TO GEODETIC DATUM CGVD-1928-1078 (MONUMENT NO. 19770765)
BENCHMARK #1 N 5020335 734 E 332184 396 Z 94.96
BENCHMARK #2 N 5020335 341 E 332310 497 Z 95.95
BENCHMARK #3 N 5020432 891 E 332406 889 Z 95.53



WSP CANADA INC.
2611 QUEENSVIEW DRIVE, SUITE 300
OTTAWA, ONTARIO
CANADA K2B 8K2
PHONE: 613-829-2800
WWW.WSP.COM

DISCLAIMER: THIS DRAWING AND DESIGN IS COPYRIGHT PROTECTED WHICH SHALL NOT BE USED, REPRODUCED OR REVISED WITHOUT WRITTEN PERMISSION BY WSP. THE CONTRACTOR SHALL CHECK AND VERIFY ALL DIMENSIONS AND UTILITY LOCATIONS AND REPORT ALL ERRORS AND OMISSIONS PRIOR TO COMMENCING WORK. COPYRIGHT: 2023



EDWARD J. CUHACI & ASSOCIATES ARCHITECTS Inc.
171 Slater St., Suite 100, Ottawa, Ontario, K1P 5H7
Fax: (613) 236-1944 Telephone: (613) 236-7135 E-mail: info@cuhaci.com

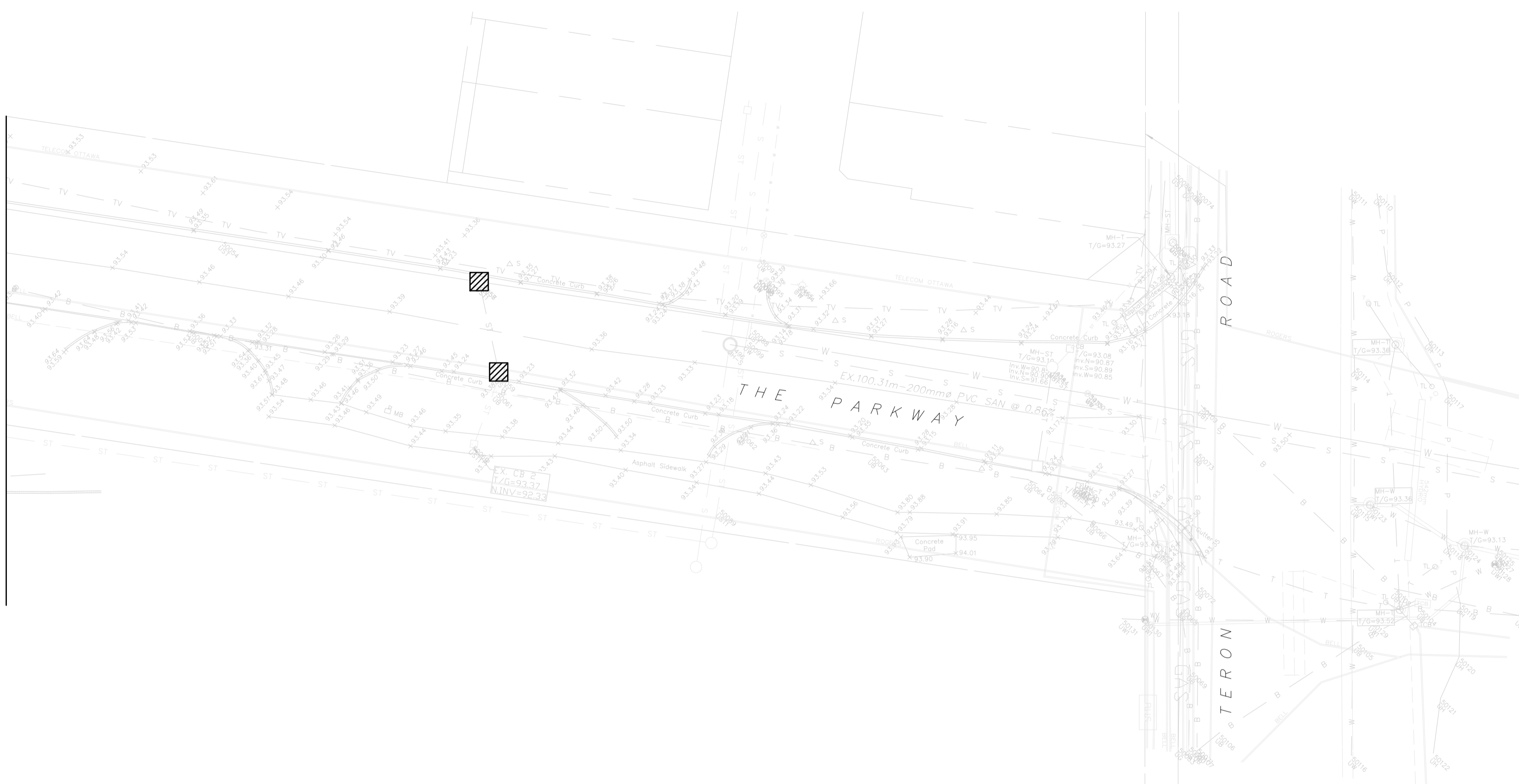
PROJECT TITLE/TITRE DU PROJET
**EARL OF MARCH
SCHOOL ADDITION**
4 THE PARKWAY
OTTAWA, ON, K2K 1Y4

DRAWING TITLE/TITRE DU DESSIN
**EROSION AND
SEDIMENT CONTROL
PLAN**

SCALE ECHELLE	1:300	PROJ. No CA0020000.3018	ISSUE No 2	REV. No 0
DRAWN BY DESSINE PAR	ZAJT	DRAWING/DESSIN		
CHECKED BY VERIFIE PAR	DY	C07B		
DATE	DECEMBER 2024			

ACAD FILE/FICHER:

MATCHING LINE
SEE DRAWING C07A

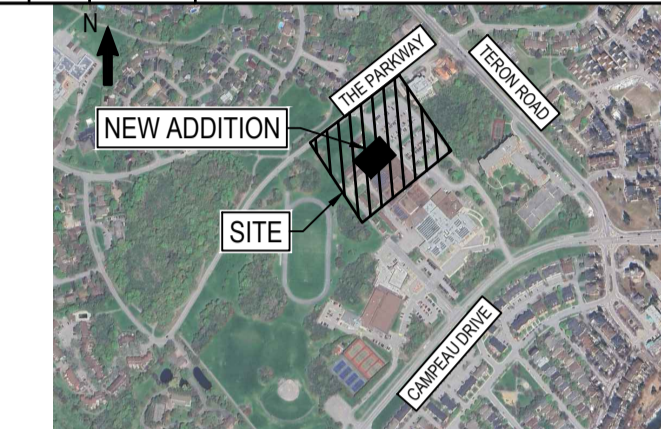




OTTAWA-CARLETON DISTRICT SCHOOL BOARD

2	24/12/12	REVISED AS PER CITY COMMENTS
1	24/07/22	ISSUED FOR SPC

ISSUE NO.	REV. NO.	DATE	ISSUE
-----------	----------	------	-------

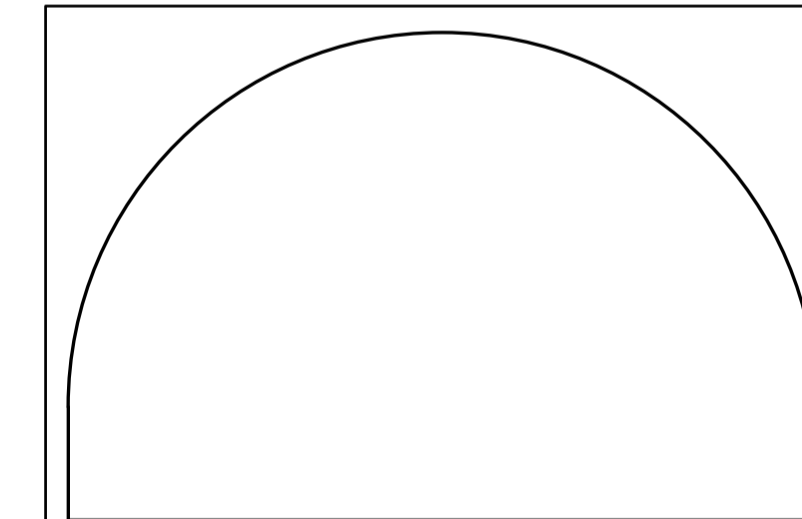
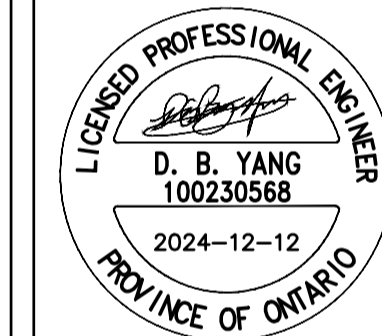


BEARING NOTE
 ELEVATIONS SHOWN ARE GEODETIC AND ARE REFERRED TO GEODETIC DATUM CGVD-1028-1078 (MONUMENT NO. 19770765)
 BENCHMARK #1 N 5202635.734 E 332184.386 Z 94.96
 BENCHMARK #2 N 5202635.341 E 332319.407 Z 95.95
 BENCHMARK #3 N 5202432.891 E 332406.889 Z 95.53



WSP CANADA INC.
 2611 QUEENSWAY DRIVE, SUITE 300
 OTTAWA, ONTARIO
 CANADA K2B 8K2
 PHONE: 613-829-2800
 WWW.WSP.COM

DISCLAIMER: THIS DRAWING AND DESIGN IS COPYRIGHT PROTECTED WHICH SHALL NOT BE USED, REPRODUCED OR REVISED WITHOUT WRITTEN PERMISSION BY WSP. THE CONTRACTOR SHALL CHECK AND VERIFY ALL DIMENSIONS AND UTILITY LOCATIONS AND REPORT ALL ERRORS AND OMISSIONS PRIOR TO COMMENCING WORK.

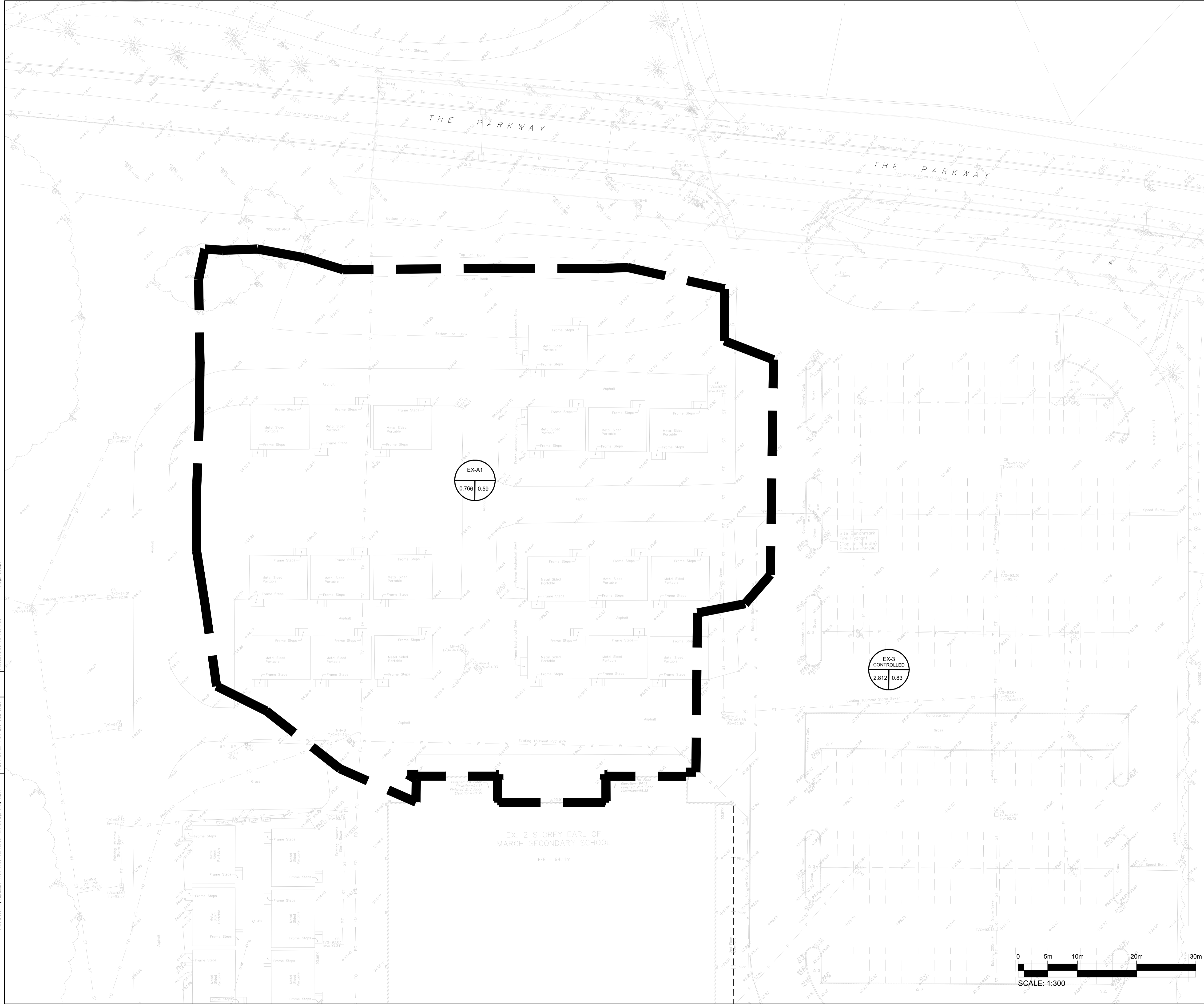


EDWARD J. CUHACI & ASSOCIATES ARCHITECTS Inc.
 171 Slater St., Suite 100, Ottawa, Ontario, K1P 5H7
 Fax: (613) 236-1944 Telephone: (613) 236-7135 E-mail: info@cuhaci.com

PROJECT TITLE/TITRE DU PROJET
EARL OF MARCH SCHOOL ADDITION
 4 THE PARKWAY
 OTTAWA, ON, K2K 1Y4

DRAWING TITLE/TITRE DU DESSIN
PRE-DEVELOPMENT DRAINAGE AREA PLAN

SCALE ECHELLE	1:300	PROJ. No. CA002000.3018	ISSUE No. 2	REV. No. 0
DRAWN BY DESSINE PAR	ZAUT	DRAWING/DESSIN		
CHECKED BY VERIFIE PAR	DY	C08		
DATE	DECEMBER 2024	ACAD FILE/FICHER:		

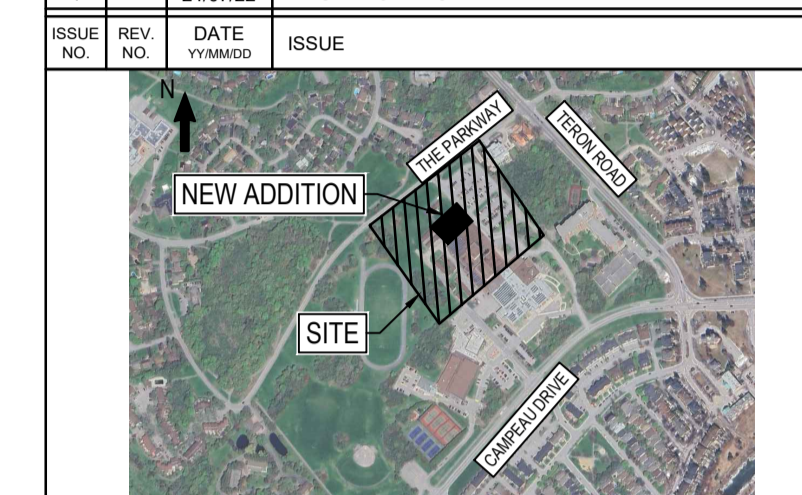


Plot Date: 11/27/2024 Plot Time: 10:45:36 Author: B. TAN, JET1
 PLOT STAMP FOR E.P. USE ONLY
 Plotter: DWG TO PDF.PC3
 Page Setup:



OTTAWA-CARLETON DISTRICT SCHOOL BOARD

2	24/12/12	REVISED AS PER CITY COMMENTS
1	24/07/22	ISSUED FOR SPC

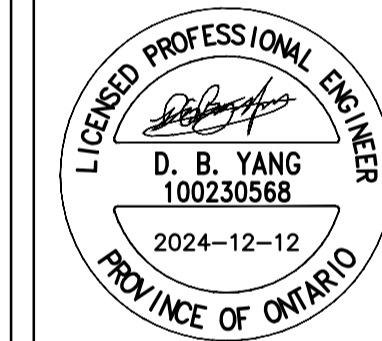


BEARING NOTE:
ELEVATIONS SHOWN ARE GEODETIC AND ARE REFERRED TO GEODETIC DATUM CGVD-1028-1078 (MONUMENT NO. 19770765)
BENCHMARK #1 N 5202035 734 E 332184 386 2.94 96
BENCHMARK #2 N 5202035 341 E 332310 407 2.93 96
BENCHMARK #3 N 5202032 891 E 332406 889 2.95 93



WSP CANADA INC.
2611 QUEENSWAY DRIVE, SUITE 300
OTTAWA, ONTARIO
CANADA K2B 8K2
PHONE: 613-829-2800
WWW.WSP.COM

DISCLAIMER: THIS DRAWING AND DESIGN IS COPYRIGHT PROTECTED WHICH SHALL NOT BE USED, REPRODUCED OR REVISED WITHOUT WRITTEN PERMISSION BY WSP. THE CONTRACTOR SHALL CHECK AND VERIFY ALL DIMENSIONS AND UTILITY LOCATIONS AND REPORT ALL ERRORS AND OMISSIONS PRIOR TO COMMENCING WORK.



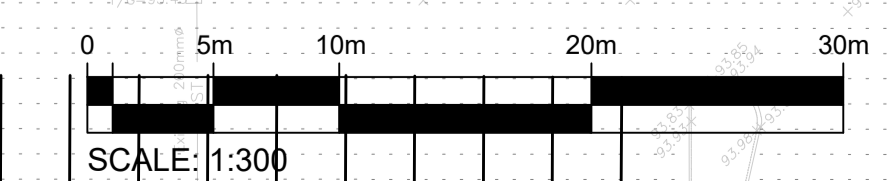
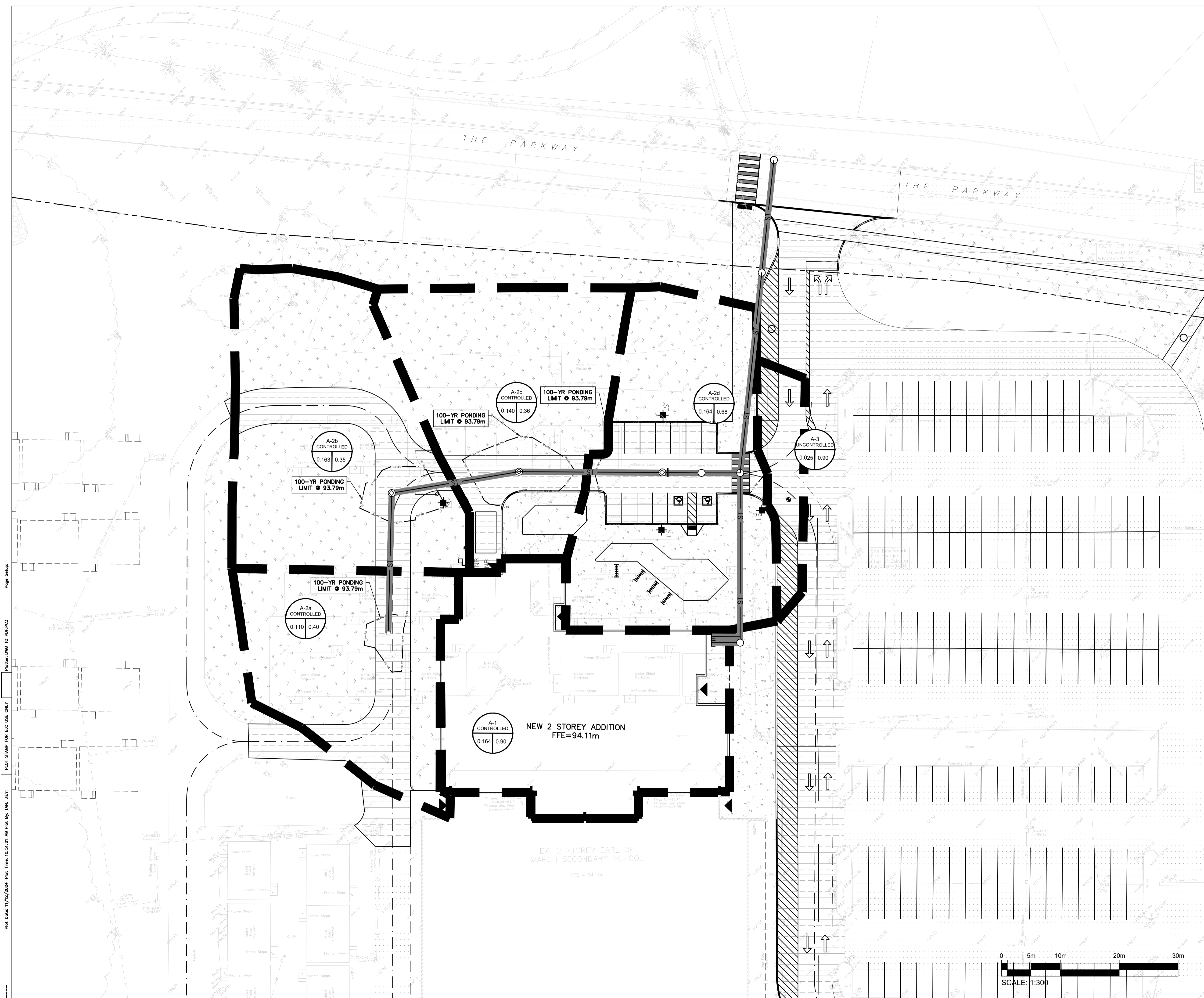
EDWARD J. CUHACI & ASSOCIATES ARCHITECTS Inc.
171 Slater St., Suite 100, Ottawa, Ontario, K1P 5H7
Fax: (613) 236-1944 Telephone: (613) 236-7135 E-mail: info@cuhaci.com

PROJECT TITLE/TITRE DU PROJET
EARL OF MARCH SCHOOL ADDITION
4 THE PARKWAY
OTTAWA, ON, K2K 1Y4

DRAWING TITLE/TITRE DU DESSIN

POST-DEVELOPMENT DRAINAGE AREA PLAN

SCALE ECHELLE	1:300	PROJ. No. CA0020000.3018	ISSUE No. 2	REV. No. 0
DRAWN BY DESSINE PAR	ZAUT	DRAWING/DESSIN		
CHECKED BY VERIFIE PAR	DY	C09		
DATE	DECEMBER 2024	ACAD FILE/FICHIER:		



Plot Date: 11/27/2024 Plot Time: 10:51:01 AM Plot By: TAN, JETI
 PLOT STAMP FOR E.A. USE ONLY
 Plotter: DWG TO PDF.PC3
 Page Setup:

Roof Drain	Area (m ²)	Depth (m)	Theoretical Rooftop Storage Volume (m ³)	Storage Volume (m ³)	Max Flow Rate (L/s)
1	190	0.15	9.5	7.6	1.3
2	200	0.15	10.0	8.0	1.3
3	240	0.15	12.0	9.6	1.3
4	180	0.15	9.0	7.2	1.3
5	200	0.15	10.0	8.0	1.3
6	280	0.15	14.0	11.2	1.3
7	200	0.15	10.0	8.0	1.3
8	20	0.15	1.0	0.8	1.3
9	20	0.15	1.0	0.8	1.3
Total	1530			61.2	11.5

WATTS Adjustable Accutrol Weir
Tag: _____
Adjustable Flow Control for Roof Drains

ADJUSTABLE ACCUTROL (for Large Sump Roof Drains only)
For more flexibility in controlling flow with heads deeper than 2", Watts Drainage offers the Adjustable Accutrol. The Adjustable Accutrol Weir is designed with a single parabolic opening that can be covered to restrict flow above 2" of head to less than 5 gpm per inch, up to 6" of head. To adjust the flow rate for depths over 2" of head, set the slot in the adjustable upper cone according to the flow rate required. Refer to Table 1 below.
Note: Flow rates are directly proportional to the amount of weir opening that is exposed.

EXAMPLE:
For example, if the adjustable upper cone is set to cover 1/2 of the weir opening, flow rates above 2" of head will be restricted to 2-1/2 gpm per inch of head.
Therefore, at 3" of head, the flow rate through the Accutrol Weir that has 1/2 the slot exposed will be:
[5 gpm (per inch of head) x 2 inches of head] + 2-1/2 gpm (for the third inch of head) = 12-1/2 gpm.

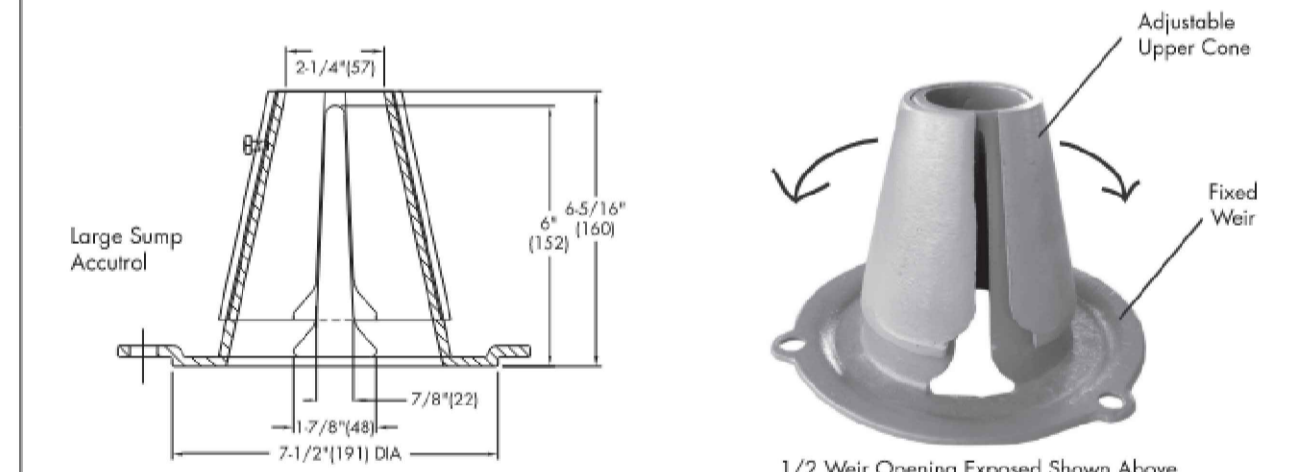


TABLE 1. Adjustable Accutrol Flow Rate Settings

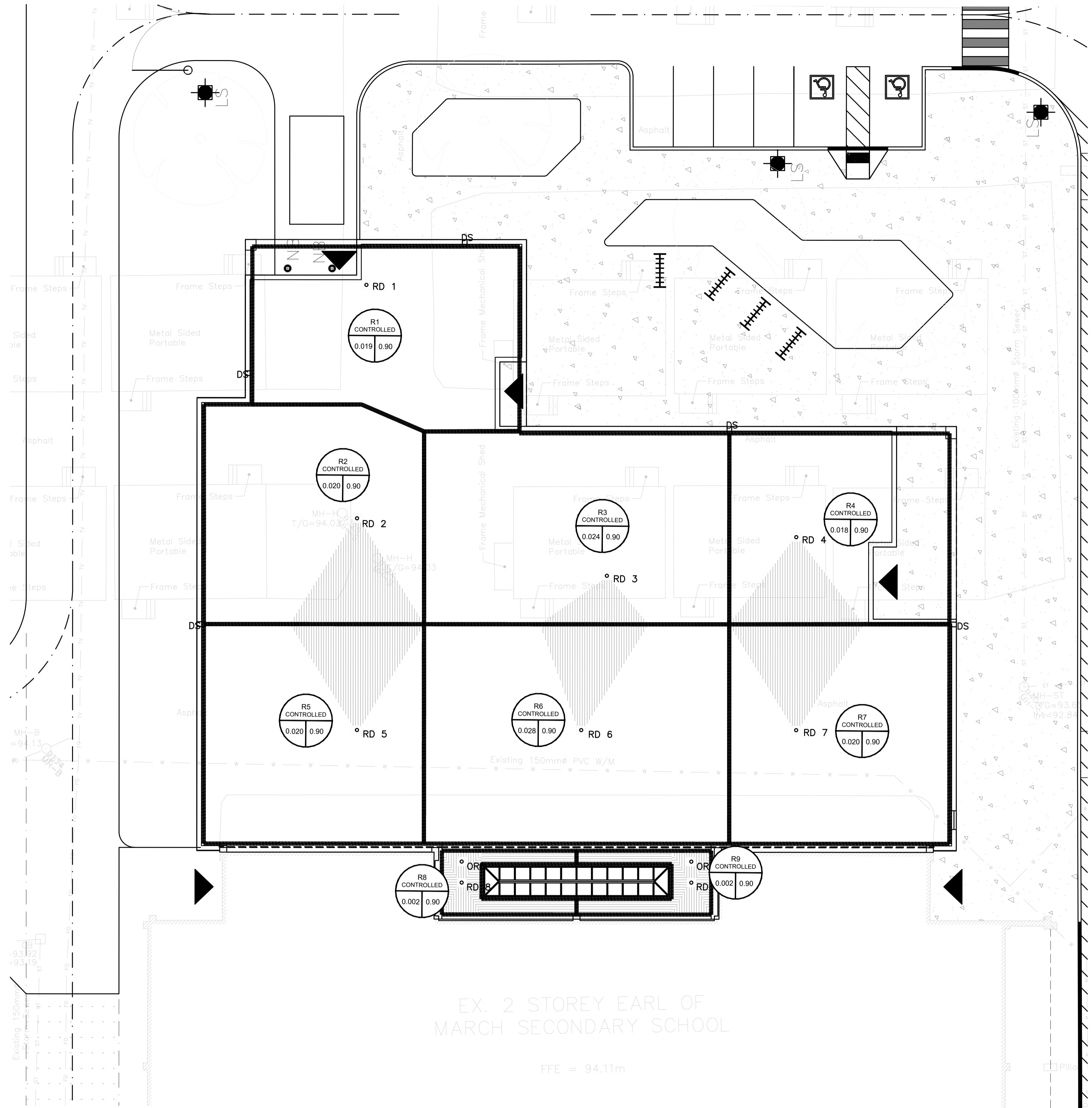
Weir Opening Exposed	1"	2"	3"	4"	5"	6"
Fully Exposed	5	10	15	20	25	30
3/4	5	10	13.75	17.5	21.25	25
1/2	5	10	12.5	15	17.5	20
1/4	5	10	11.25	12.5	13.75	15
Closed	5	5	5	5	5	5

Job Name: _____ Contractor: _____
 Job Location: _____ Contractor's P.O. No.: _____
 Engineer: _____ Representative: _____

Watts product specifications in U.S. customary units and metric are approximate and are provided for reference only. For precise measurements, please contact Watts Technical Services. Watts reserves the right to change or modify product design, construction, specifications or materials without prior notice and without incurring any obligation to make such changes and modifications on Watts products previously or subsequently sold.

USA: Tel: (800) 338-2581 • Fax: (828) 248-3029 • Watts.com
 Canada: Tel: (800) 332-4060 • Fax: (800) 332-7068 • Watts.ca
 Latin America: Tel: (52) 81-1001-8902 • Fax: (52) 81-8200-7091 • Watts.com

ES-WD-RD-ACCUTROLADJ-CAN 1615 © 2016 Watts



ISSUE NO.	REV. NO.	DATE	ISSUE
2		24/12/12	REVISED AS PER CITY COMMENTS
1		24/07/22	ISSUED FOR SPC

BEARING NOTE:
ELEVATIONS SHOWN ARE GEODETIC AND ARE REFERRED TO GEODETIC DATUM CGVD-1028-1078 (MONUMENT NO. 1977076).
BENCHMARK #1 N 502036.734 E 332184.386 Z 94.96
BENCHMARK #2 N 502036.341 E 332319.407 Z 94.96
BENCHMARK #3 N 5020432.891 E 332406.889 Z 95.53

wsp
 WSP CANADA INC.
 2611 QUEENSWAY DRIVE, SUITE 300
 OTTAWA, ONTARIO
 CANADA K2B 8K2
 PHONE: 613-829-2800
 WWW.WSP.COM

DISCLAIMER: THIS DRAWING AND DESIGN IS COPYRIGHT PROTECTED WHICH SHALL NOT BE USED, REPRODUCED OR REVISED WITHOUT WRITTEN PERMISSION BY WSP. THE CONTRACTOR SHALL CHECK AND VERIFY ALL DIMENSIONS AND UTILITY LOCATIONS AND REPORT ALL ERRORS AND OMISSIONS PRIOR TO COMMENCING WORK.

PROFESSIONAL ENGINEER
 LICENSED PROFESSIONAL ENGINEER
 D. B. YANG
 100230568
 2024-12-12
 PROVINCE OF ONTARIO

EDWARD J. CUHACI & ASSOCIATES ARCHITECTS Inc.
 171 Slater St, Suite 100, Ottawa, Ontario, K1P 5H7
 Fax: (613) 236-1944 Telephone: (613) 236-7135 E-mail: info@cuhaci.com

PROJECT TITLE/TITRE DU PROJET
EARL OF MARCH SCHOOL ADDITION
 4 THE PARKWAY
 OTTAWA, ON, K2K 1Y4

DRAWING TITLE/TITRE DU DESSIN
ROOF DRAINAGE AREA PLAN

SCALE	PROJ. No.	ISSUE No.	REV. No.
ECHELLE: 1:150	CA002000.3018	2	0
DRAWN BY: ZA/JT	DRAWING/DESSIN	C10	
CHECKED BY: DY	VERIFIE PAR		
DATE: DECEMBER 2024	ACAD FILE/FICHER:		

Plot Date: 11/27/2024 Plot Time: 10:10:46 AM Plot By: TAN, JEN1
 PLOT STAMP FOR E.P. USE ONLY
 Plotter: DWG TO PDF.PC3
 Page Setup: