

**LEGAL DESCRIPTION OF PROPERTY**  
 PART OF LOT 3  
 CONCESSION 3  
 GEOGRAPHIC TOWNSHIP OF MARCH  
 CITY OF OTTAWA

**SITE DATA**

LOT AREA	97419 M SQ
EXISTING BUILDING AREA	13070 M SQ
ADDITION BUILDING AREA	1579 M SQ
TOTAL BUILDING AREA	14649 M SQ
LOT COVERAGE	15%

**PARKING CALCULATIONS**

MINIMUM PARKING REQUIREMENTS:  
 SECONDARY SCHOOL: 2 SPACES PER CLASSROOM  
 ELEMENTARY SCHOOL: 1.5 SPACES PER CLASSROOM

REQUIRED USE	No. CLASSES	SPACES PER CLASS	SPACES REQ'D
EXISTING HIGH SCHOOL	50	2.0 / CLASS	100
EXISTING ELEMENTARY	24	1.5 / CLASS	36
EXISTING PORTABLES	12	2.0 / CLASS	24
NEW SCHOOL ADDITION	25	2.0 / CLASS	50
FUTURE PORTABLES	12	2.0 / CLASS	24
<b>TOTAL REQUIRED PARKING SPACES</b>			<b>234</b>
TOTAL REQUIRED PARKING SPACES FOR THE PHYSICALLY DISABLED			7

**PROVIDED**

EXISTING REGULAR	227
EXISTING BARRIER FREE	5
NEW REGULAR @ 5.2mD X 2.6mW	11
NEW BARRIER FREE @ 5.2mD X 3.4mW	2
<b>TOTAL SPACES PROVIDED</b>	<b>245</b>

**BICYCLE PARKING CALCULATIONS**

RATIO	1 PER 100m <sup>2</sup> OF GROSS FLOOR AREA
EXISTING BUILDING GROSS FL. AREA	13430.0 M SQ
NEW ADDITION GROSS FL. AREA	1973.0 M SQ
PORTABLE GROSS FL. AREA	840.0 M SQ
FUTURE GROSS FL. AREA	840.0 M SQ
TOTAL GROSS FLOOR AREA	17083.0 M SQ
TOTAL REQUIRED PARKING	171 PARKING SPOTS
NEW BICYCLE PARKING	36 PARKING SPOTS
EXISTING BICYCLE PARKING	180 PARKING SPOTS
TOTAL PROVIDED PARKING	216 PARKING SPOTS

**CITY OF OTTAWA ZONING**

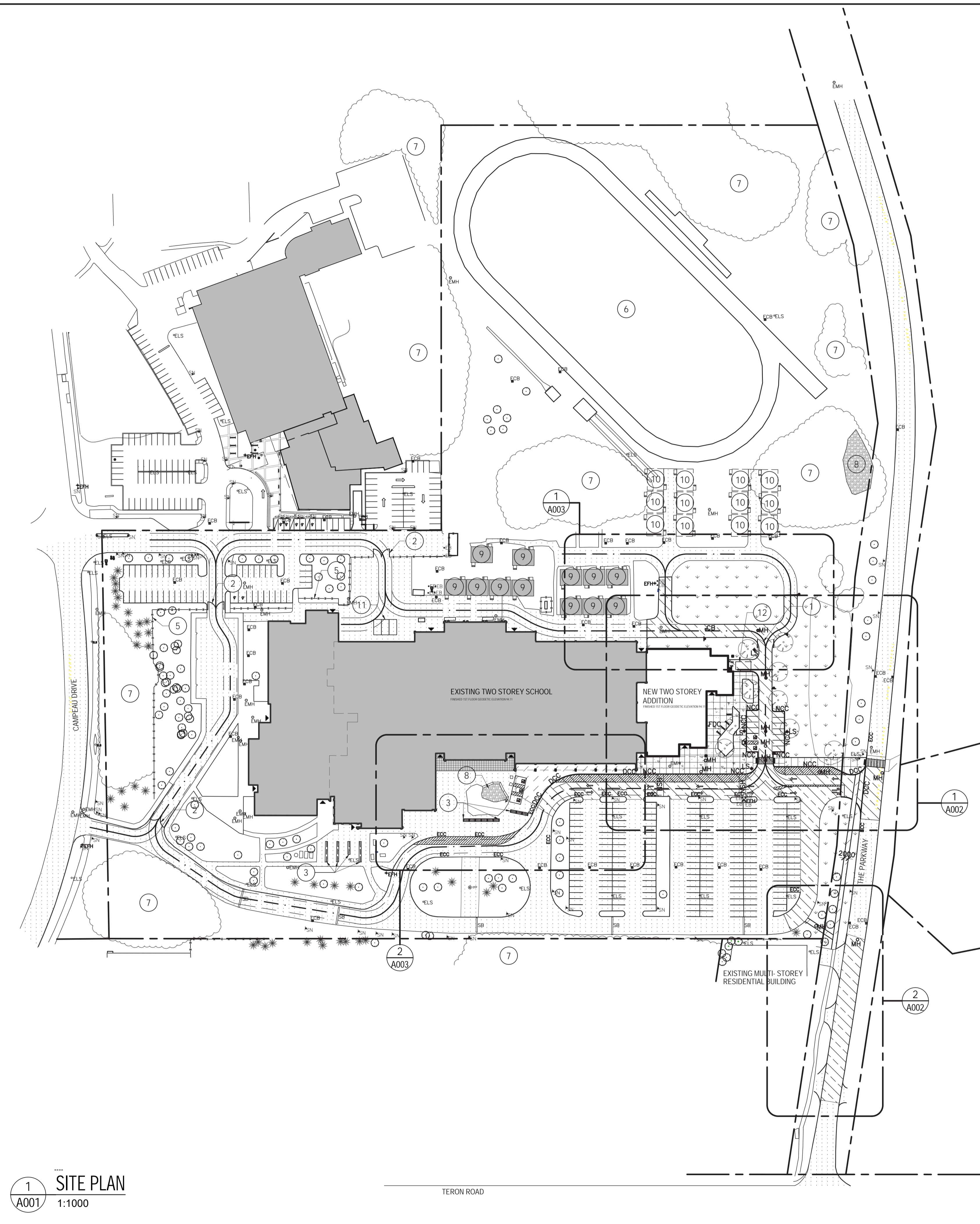
REQUIRED	PROVIDED
MINOR INSTITUTIONAL ZONE: I1A	
LOT AREA	MIN. 400m <sup>2</sup> 97,419 SQ M
LOT WIDTH	MIN. 15.0m 374.3 M
BUILDING HEIGHT	MAX. 15.0m 9.5 M
FRONT YARD SETBACK	MIN. 7.5 M 51.5 M
REAR YARD SETBACK	MIN. 7.5 M 64.7 M
SIDE YARD SETBACK	MIN. 7.5 M 36.5 M
LANDSCAPE @ PARKING	MIN. 15% 20%

- GENERAL NOTES**
- FOR SCHOOL SITE GRADING INFORMATION REFER TO SITE GRADING DRAWING AS PREPARED BY CIVIL ENGINEER.
  - FOR SOIL INVESTIGATION REPORT REFER TO GEOTECHNICAL REPORT.
  - ALL WORK OUTSIDE PROPERTY LINE TO BE CONSTRUCTED TO LOCAL MUNICIPALITY CONSTRUCTION STANDARDS.
  - RE-SOD ALL LANDSCAPING AREAS DISTURBED BY NEW CONSTRUCTION.
  - FOR SCHOOL SITE SERVICES REFER TO SITE SERVICE DRAWING PREPARED BY CIVIL ENGINEER.
  - CONTRACTOR TO VERIFY ALL DIMENSIONS ON SITE AND REPORT ANY ERRORS TO THE ARCHITECT.
  - CONTRACTOR TO CO-ORDINATE WITH ALL DRAWINGS.
  - FOR LANDSCAPING DESIGN REFER TO LANDSCAPING PLAN PREPARED BY LANDSCAPE ARCHITECT.
  - COORDINATE AND OBTAIN REQUIRED PERMITS FROM OTTAWA-MACDONALD CARTIER INTERNATIONAL AIRPORT AZR IN CONNECTION WITH THE ERECTION OF CONSTRUCTION EQUIPMENT SUCH AS BUT NOT LIMITED TO CONSTRUCTION CRANES.
  - NEW PARKING STALL SIZE: 2600mm x 5200mm
  - SLOPES OF CONCRETE/PAVING AT DEPRESSED CURBS SHALL NOT EXCEED 5%
  - FOR SITE SURVEY INFORMATION, SEE TOPOGRAPHIC SURVEY DRAWING PREPARED BY FARLEY, SMITH & DENIS SURVEYING LTD.

**DRAWING LEGEND**

	BARRIER FREE PARKING
	BUILDING ENTRANCE/EXIT
	EXISTING BUILDING
	EXISTING INTERLOCK PAVERS
	EXISTING ASPHALT PAVING
	EXISTING CONCRETE WALKWAY
	NEW SOD AND TOPSOIL (REFER ALSO TO LANDSCAPE PLAN)
	NEW CONCRETE WALKWAY WITH CONTROL JOINTS
	NEW TYPE 1 ASPHALT - HEAVY DUTY (REFER TO SPEC.)
	NEW TYPE 2 ASPHALT - MEDIUM DUTY (REFER TO SPEC.)
	EXISTING SPEED BUMPS TO REMAIN
	EXISTING SIGN
	EXISTING BOLLARD
	EXISTING CONCRETE CURB TO REMAIN
	EXISTING DEPRESSED CONCRETE CURB
	EXISTING FIRE HYDRANT
	NEW SPEED HUMPS
	NEW PAINTED PEDESTRIAN CROSSING
	NEW 'FIRE ROUTE' SIGN
	NEW 'NO ENTRY BUS ONLY' SIGN
	NEW 'NO BUS PARKING BEYOND LINE' SIGN
	NEW BOLLARD
	NEW CONCRETE CURB
	NEW DEPRESSED CONCRETE CURB
	NEW BICYCLE RACK
	EXISTING FLAG POLE
	EXISTING CATCH BASIN
	EXISTING UTILITY POLE
	EXISTING LIGHT STANDARD
	NEW PARKING LOT LIGHT STANDARD (REFER TO ELECTRICAL)
	EXISTING GOAL POST
	EXISTING MAN HOLE
	NEW MAN HOLE. REFER TO CIVIL
	NEW CATCH BASIN. REFER TO CIVIL
	EXISTING FENCE
	PROPERTY LOT LINE
	PROPERTY SETBACK LINES
	FIRE ROUTE
	EXISTING TREE TO REMAIN. REFER TO LANDSCAPE DOCUMENTS
	EXISTING PORTABLE CLASSROOM
	FUTURE PORTABLE CLASSROOM
	NEW TREES - SEE LANDSCAPE DRAWINGS.

- DRAWING NOTES**
- NEW GATE. REFER TO A004
  - EXISTING GATE.
  - EXISTING BICYCLE RACK.
  - NEW BICYCLE RACK. REFER TO SPECIFICATION
  - EXISTING CHAINLINK FENCE.
  - EXISTING SPORTS FIELD AND RUNNING TRACK.
  - EXISTING WOODED AREA.
  - EXISTING ROCKY OUTCROP.
  - EXISTING PORTABLE CLASSROOM.
  - FUTURE PORTABLE CLASSROOM.
  - EXISTING LOADING SPACES.
  - NEW LOADING SPACES.



**1 SITE PLAN**  
 A001 1:1000

**OTTAWA-CARLETON DISTRICT SCHOOL BOARD**

2	0	2024/12/13	ISSUED FOR SITE PLAN CONTROL
1	0	2024/07/24	ISSUED FOR PHASE 2 SITE PLAN CONTROL
ISSUE NO.	REV. NO.	DATE	ISSUE

LES IDÉES, CONCEPTS, DISPOSITIONS ET PLANS MONTRÉS OU REPRÉSENTÉS PAR CE DESSIN APPARTIENNENT À EDWARD J. CUHACI AND ASSOCIATES ARCHITECTS INC. ET ONT ÉTÉ CRÉÉS, DÉVELOPPÉS POUR ÊTRE UTILISÉS DANS LE CADRE DU PRÉSENT PROJET. ILS NE DOIVENT PAS ÊTRE UTILISÉS À D'AUTRES FINS NI COMMUNIQUÉS À QUI QUE CE SOIT SANS LA PERMISSION ÉCRITE DE EDWARD J. CUHACI AND ASSOCIATES ARCHITECTS INC.

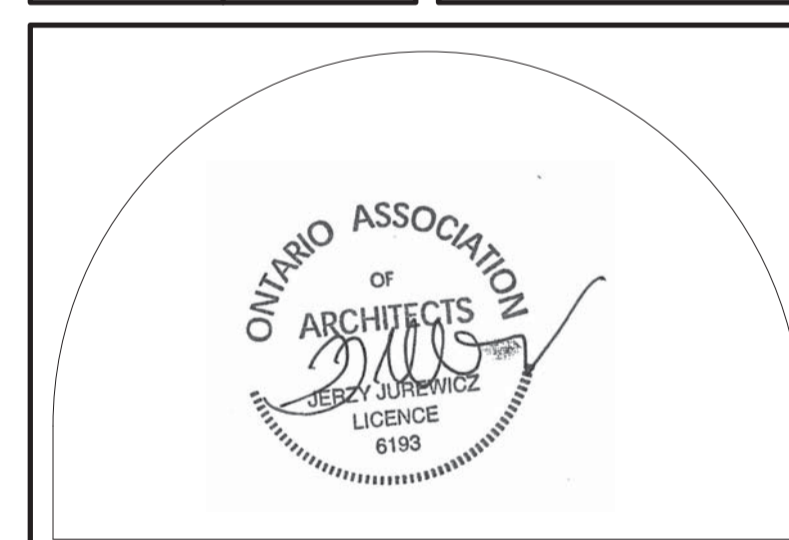
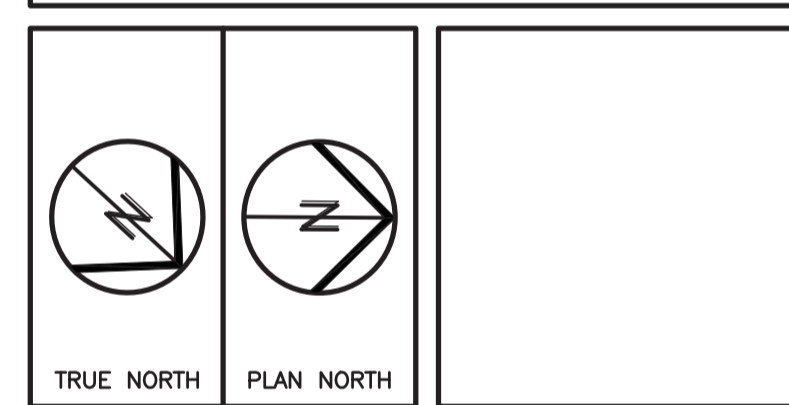
L'ARCHITECTE DÉCLINE TOUTE RESPONSABILITÉ DÉCOULANT DE PROBLÈMES FAISANT SUITE AU NON RESPECT DES PLANS ET DEVIS OU DE L'INTENTION DU CONCEPT QU'ILS TRANSMETTENT, OU DE TOUS PROBLÈMES POUVANT RÉSULTER DU DÉFAUT DE TIERS D'OBTENIR OU DE SUIVRE LES INSTRUCTIONS DE L'ARCHITECTE RELATIVEMENT AUX ERREURS, OMISSIONS, INCOHÉRENCES, AMBIGÜITÉS OU CONTRADICTIONS ALLEGUES.

L'ENTREPRENEUR DOIT VÉRIFIER TOUTES LES DIMENSIONS SUR PLACE ET INFORMER L'ARCHITECTE DE TOUT ÉCART AVANT LE DÉBUT DES TRAVAUX. NE PAS MESURER LES DESSINS À L'ÉCHELLE.

ALL IDEAS, DESIGNS, ARRANGEMENTS, AND PLANS INDICATED OR REPRESENTED BY THIS DRAWING ARE OWNED BY AND THE PROPERTY OF EDWARD J. CUHACI AND ASSOCIATES INC. AND WERE CREATED, EVOLVED, AND DEVELOPED FOR USE ON AND IN CONNECTION WITH THE SPECIFIED PROJECT. NONE OF THE IDEAS, DESIGNS, ARRANGEMENTS OR PLANS SHALL BE USED BY OR DISCLOSED TO ANY PERSON, FIRM, OR CORPORATION FOR ANY PURPOSE WHATSOEVER WITHOUT THE WRITTEN PERMISSION OF EDWARD J. CUHACI AND ASSOCIATES INC.

THE ARCHITECT WAIVES ANY AND ALL RESPONSIBILITY AND LIABILITY FOR PROBLEMS WHICH ARISE FROM FAILURE TO FOLLOW THESE PLANS, SPECIFICATIONS, AND THE DESIGN INTENT THEY CONVEY, OR FOR PROBLEMS WHICH ARISE FROM OTHERS' FAILURE TO OBTAIN AND/OR FOLLOW THE ARCHITECT'S GUIDANCE WITH RESPECT TO ANY ERRORS, OMISSIONS, INCONSISTENCIES, AMBIGUITIES OR CONFLICTS WHICH ARE ALLEGED.

CONTRACTOR TO VERIFY ALL DIMENSIONS AND NOTIFY THE ARCHITECT OF ANY DISCREPANCIES BEFORE WORK COMMENCES. DO NOT SCALE DRAWINGS



**EDWARD J CUHACI & ASSOCIATES ARCHITECTS Inc.**  
 171 Stater St, Suite 100, Ottawa, Ontario, K1P 5H7  
 Fax: (613) 236-1944 Telephone: (613) 236-7135 E-mail: info@cuhaci.com

PROJECT/TITRE DU PROJET  
**EARL OF MARCH SECONDARY SCHOOL ADDITION 2024**  
 4 THE PARKWAY  
 KANATA, ON, K2K 1Y4

OTTAWA-CARLETON DISTRICT SCHOOL BOARD  
 133 GREENBANK RD, OTTAWA

DRAWING/TITRE DU DESSIN  
**SITE PLAN**

SCALE	PROJ. No	ISSUE No	REV. No
ECHELLE	1:1000	2411	2 0
DRAWN BY	DRAWING/DESSIN		
DESSINE PAR	AL/SL		
CHECKED BY	XF		
VERIFIE PAR	A001		
DATE	2024		
	ACAD FILE/FICHER: 2411-A001.DWG		

2	0	2024/12/13	ISSUED FOR SITE PLAN CONTROL
1	0	2024/07/24	ISSUED FOR PHASE 2 SITE PLAN CONTROL
ISSUE NO.	REV. NO.	DATE	ISSUE

LES IDÉES, CONCEPTS, DISPOSITIONS ET PLANS MONTRÉS OU REPRÉSENTÉS PAR CE DESSIN APPARTIENNENT À EDWARD J. CUHACI AND ASSOCIATES ARCHITECTS INC. ET ONT ÉTÉ CRÉÉS, ET DÉVELOPPÉS POUR ÊTRE UTILISÉS DANS LE CADRE DU PRÉSENT PROJET. ILS NE DOIVENT PAS ÊTRE UTILISÉS À D'AUTRES FINS NI COMMUNIQUÉS À QUI QUE CE SOIT SANS LA PERMISSION ÉCRITE DE EDWARD J. CUHACI AND ASSOCIATES ARCHITECTS INC.

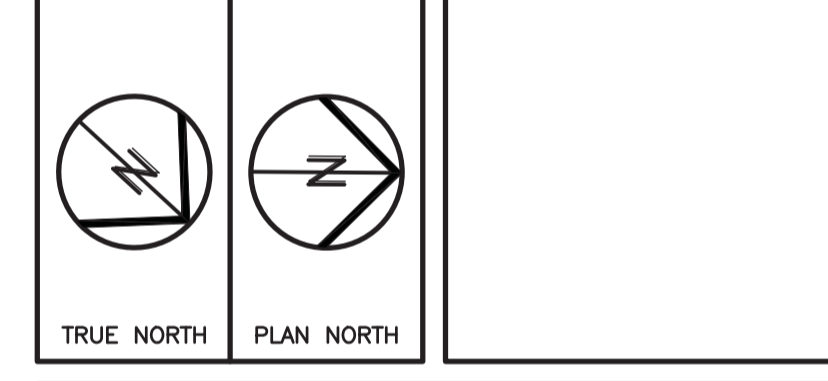
L'ARCHITECTE DÉCLINE TOUTE RESPONSABILITÉ DÉCOULANT DE PROBLÈMES FAISANT SUITE AU NON RESPECT DES PLANS ET DEVIS OU DE L'INTENTION DU CONCEPT QU'ILS TRANSMETTENT, OU DE TOUS PROBLÈMES POUVANT RÉSULTER DU DÉFAUT DE TIERS D'OBTENIR OU DE SUIVRE LES INSTRUCTIONS DE L'ARCHITECTE RELATIVEMENT AUX ERREURS, OMISSIONS, INCOHÉRENCES, AMBIGUITÉS OU CONTRADICTIONS ALLÉGUÉS.

L'ENTREPRENEUR DOIT VÉRIFIER TOUTES LES DIMENSIONS SUR PLACE ET INFORMER L'ARCHITECTE DE TOUT ÉCART AVANT LE DÉBUT DES TRAVAUX. NE PAS MESURER LES DESSINS À L'ÉCHELLE.

ALL IDEAS, DESIGNS, ARRANGEMENTS, AND PLANS INDICATED OR REPRESENTED BY THIS DRAWING ARE OWNED BY AND THE PROPERTY OF EDWARD J. CUHACI AND ASSOCIATES INC. AND WERE CREATED, EVOLVED, AND DEVELOPED FOR USE ON AND IN CONNECTION WITH THE SPECIFIED PROJECT. NONE OF THE IDEAS, DESIGNS, ARRANGEMENTS OR PLANS SHALL BE USED BY OR DISCLOSED TO ANY PERSON, FIRM, OR CORPORATION FOR ANY PURPOSE WHATSOEVER WITHOUT THE WRITTEN PERMISSION OF EDWARD J. CUHACI AND ASSOCIATES INC.

THE ARCHITECT WAIVES ANY AND ALL RESPONSIBILITY AND LIABILITY FOR PROBLEMS WHICH ARISE FROM FAILURE TO FOLLOW THESE PLANS, SPECIFICATIONS, AND THE DESIGN INTENT THEY CONVEY, OR FOR PROBLEMS WHICH ARISE FROM OTHERS' FAILURE TO OBTAIN AND/OR FOLLOW THE ARCHITECT'S GUIDANCE WITH RESPECT TO ANY ERRORS, OMISSIONS, INCONSISTENCIES, AMBIGUITIES OR CONFLICTS WHICH ARE ALLEGED.

CONTRACTOR TO VERIFY ALL DIMENSIONS AND NOTIFY THE ARCHITECT OF ANY DISCREPANCIES BEFORE WORK COMMENCES. DO NOT SCALE DRAWINGS



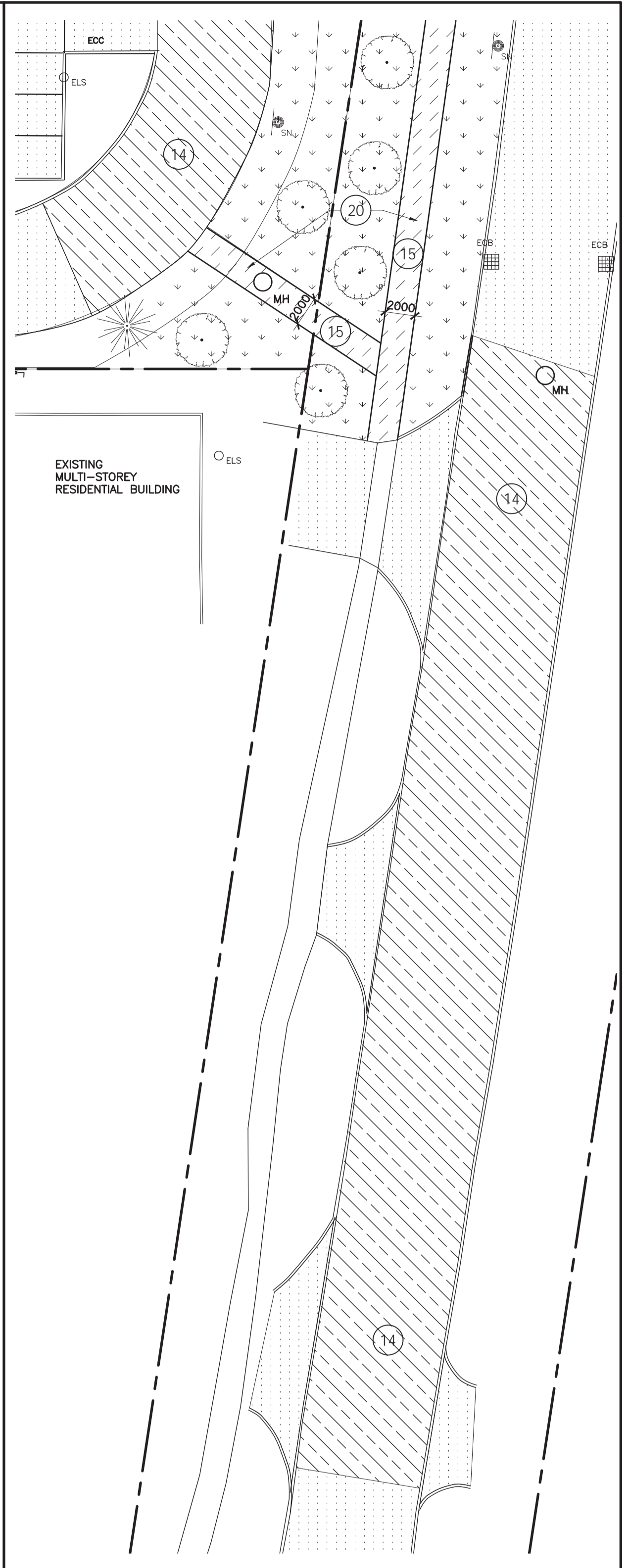
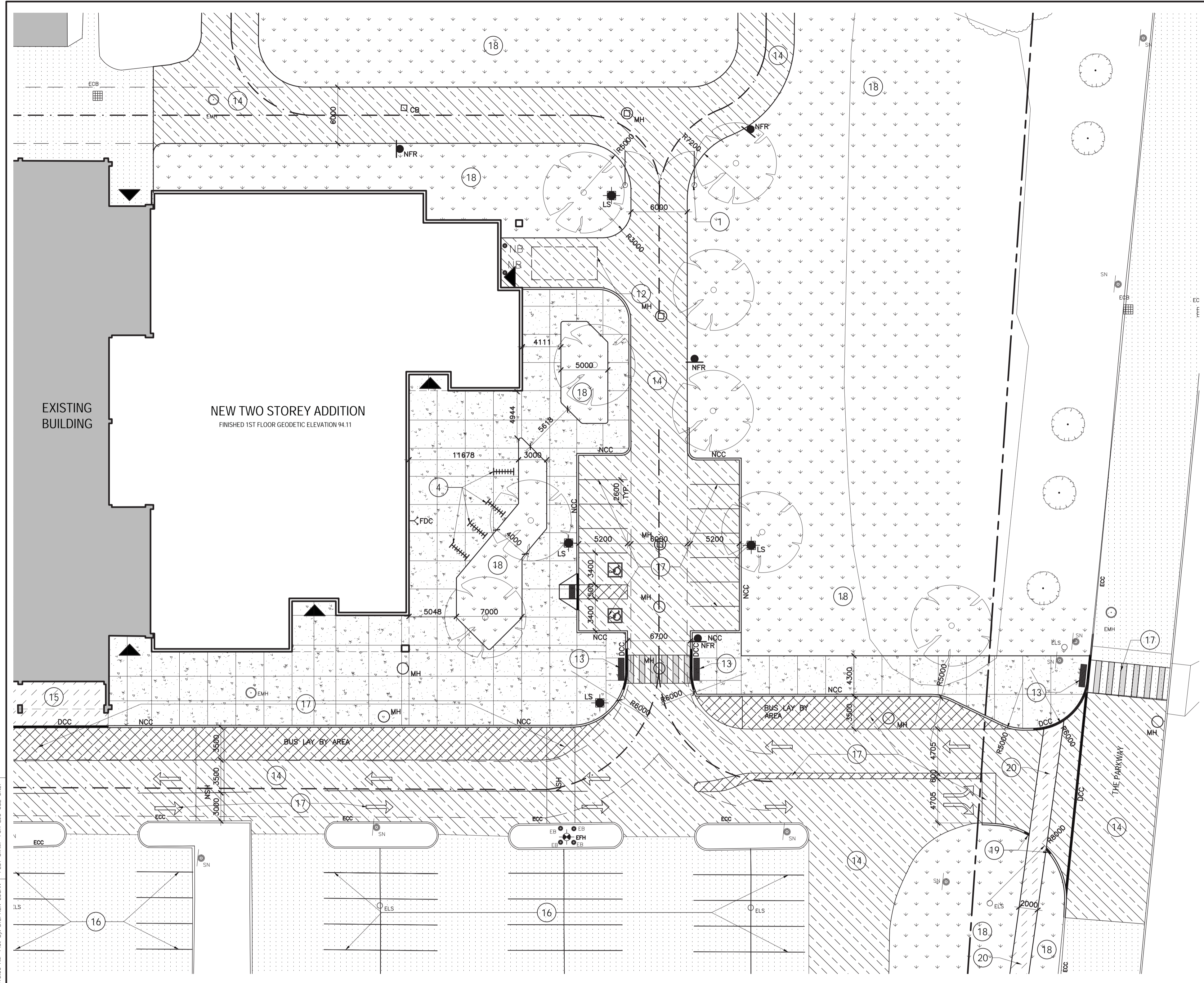
**EDWARD J CUHACI & ASSOCIATES ARCHITECTS Inc.**  
171 Stater St, Suite 100, Ottawa, Ontario, K1P 5H7  
Fax: (613) 236-1944 Telephone: (613) 236-7135 E-mail: info@cuhaci.com

PROJECT/TITRE DU PROJET  
**EARL OF MARCH SECONDARY SCHOOL ADDITION 2024**  
4 THE PARKWAY  
KANATA, ON, K2K 1Y4

OTTAWA-CARLETON DISTRICT SCHOOL BOARD  
133 GREENBANK RD, OTTAWA

DRAWING/TITRE DU DESSIN  
**PARTIAL SITE PLAN**

SCALE ECHELLE	1:250	PROJ. No	2411	ISSUE No	2	REV. No	0	
DRAWN BY DESSINE PAR	AL/SL	DRAWING/DESSIN					<b>A002</b>	
CHECKED BY VÉRIFIÉ PAR	XF	DATE						
DATE		2024		ACAD FILE/FICHER: 2411-A002.DWG				



**1 PARTIAL SITE PLAN - NEW WORK**  
A002 1:250

**2 ASPHALT AND PATHWAY REINSTATEMENT**  
A002 1:250

**DRAWING LEGEND**

<ul style="list-style-type: none"> <li> BARRIER FREE PARKING</li> <li> BUILDING ENTRANCE/EXIT</li> <li> EXISTING BUILDING</li> <li> EXISTING INTERLOCK PAVERS</li> <li> EXISTING ASPHALT PAVING</li> <li> EXISTING CONCRETE WALKWAY</li> <li> NEW SOD AND TOPSOIL (REFER ALSO TO LANDSCAPE PLAN)</li> <li> NEW CONCRETE WALKWAY WITH CONTROL JOINTS</li> <li> NEW TYPE 1 ASPHALT - HEAVY DUTY (REFER TO SPEC.)</li> <li> NEW TYPE 2 ASPHALT - MEDIUM DUTY (REFER TO SPEC.)</li> </ul>	<ul style="list-style-type: none"> <li> EXISTING SPEED BUMPS TO REMAIN</li> <li> EXISTING SIGN</li> <li> EXISTING BOLLARD</li> <li> EXISTING CONCRETE CURB TO REMAIN</li> <li> EXISTING DEPRESSED CONCRETE CURB</li> <li> EXISTING FIRE HYDRANT</li> <li> NEW SPEED HUMPS</li> <li> NEW PAINTED PEDESTRIAN CROSSING</li> <li> NEW 'FIRE ROUTE' SIGN</li> <li> NEW 'NO ENTRY' BUS ONLY' SIGN</li> <li> NEW 'NO BUS PARKING BEYOND LINE' SIGN</li> <li> NEW BOLLARD</li> <li> NEW CONCRETE CURB</li> <li> NEW DEPRESSED CONCRETE CURB</li> <li> NEW BICYCLE RACK</li> </ul>	<ul style="list-style-type: none"> <li> EXISTING FLAG POLE</li> <li> EXISTING CATCH BASIN</li> <li> EXISTING UTILITY POLE</li> <li> EXISTING LIGHT STANDARD</li> <li> NEW PARKING LOT LIGHT STANDARD (REFER TO ELECTRICAL)</li> <li> EXISTING GOAL POST</li> <li> EXISTING MAN HOLE</li> <li> NEW MAN HOLE. REFER TO CIVIL</li> <li> NEW CATCH BASIN. REFER TO CIVIL</li> <li> EXISTING FENCE</li> <li> PROPERTY LOT LINE</li> <li> PROPERTY SETBACK LINES</li> <li> FIRE ROUTE</li> <li> EXISTING TREE TO REMAIN. REFER TO LANDSCAPE</li> </ul>	<ul style="list-style-type: none"> <li> EXISTING PORTABLE CLASSROOM</li> <li> FUTURE PORTABLE CLASSROOM</li> <li> NEW TREES - SEE LANDSCAPE DRAWINGS.</li> </ul>
---	---	--	--

**DRAWING NOTES**

- |  |   |   |
|--|---|---|
| <ul style="list-style-type: none"> <li>1 NEW GATE. REFER TO A004</li> <li>2 EXISTING GATE.</li> <li>3 EXISTING BICYCLE RACK.</li> <li>4 NEW BICYCLE RACK. REFER TO SPECIFICATION</li> <li>5 EXISTING CHAINLINK FENCE.</li> <li>6 EXISTING SPORTS FIELD AND RUNNING TRACK.</li> <li>7 EXISTING WOODED AREA.</li> <li>8 EXISTING ROCKY OUTCROP.</li> <li>9 EXISTING PORTABLE CLASSROOM.</li> </ul> | <ul style="list-style-type: none"> <li>10 FUTURE PORTABLE CLASSROOM.</li> <li>11 EXISTING LOADING SPACES.</li> <li>12 NEW LOADING SPACES.</li> <li>13 TACTILE WALKING SURFACE INDICATOR</li> <li>14 NEW TYPE 1 HEAVY DUTY ASPHALT. REFER TO SPECIFICATION</li> <li>15 NEW TYPE 2 MEDIUM DUTY ASPHALT. REFER TO SPECIFICATION</li> <li>16 EXISTING PAINTED PARKING LINES</li> <li>17 NEW PAINTED LINE MARKINGS, HANDICAP SYMBOLS, TRAFFIC ARROWS, CROSSWALK ETC.</li> <li>18 NEW SOD AND TOP SOIL. ALSO REFER TO LANDSCAPE.</li> </ul> | <ul style="list-style-type: none"> <li>19 DEPRESSED CONCRETE CURB DOWN TO ASPHALT PATH. ASPHALT PATH TO BE CONTINUOUS</li> <li>20 NEW 2m WIDE ASPHALT PATHWAY</li> <li>21 NEW CONCRETE PAVING C/W SAWCUTS @ 3100 O.C MAX</li> </ul> |
|--|---|---|

Plot Date: 13/12/2024 Plot Time: 9:10:06 AM Plot By: STEPHEN LOGAN Plot Stamp For: E.C. USE ONLY

DRAWING LEGEND

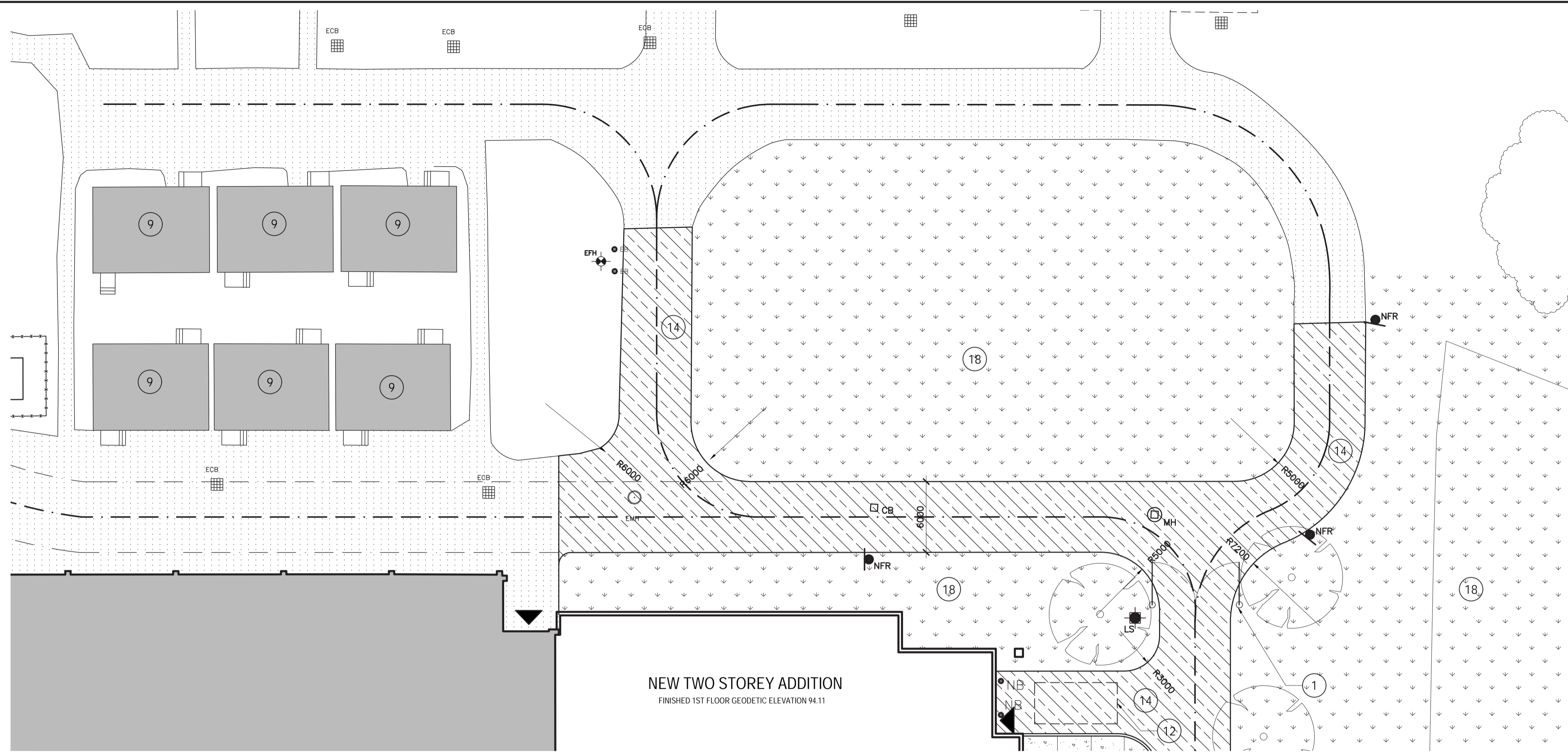
- BARRIER FREE PARKING
- BUILDING ENTRANCE/EXIT
- EXISTING BUILDING
- EXISTING INTERLOCK PAVERS
- EXISTING ASPHALT PAVING
- EXISTING CONCRETE WALKWAY
- NEW SOD AND TOPSOIL (REFER ALSO TO LANDSCAPE PLAN)
- NEW CONCRETE WALKWAY WITH CONTROL JOINTS
- NEW TYPE 1 ASPHALT - HEAVY DUTY (REFER TO SPEC.)
- NEW TYPE 2 ASPHALT - MEDIUM DUTY (REFER TO SPEC.)

- EXISTING SPEED BUMPS TO REMAIN
- EXISTING SIGN
- EXISTING BOLLARD
- EXISTING CONCRETE CURB TO REMAIN
- EXISTING DEPRESSED CONCRETE CURB
- EXISTING FIRE HYDRANT
- NEW SPEED HUMPS
- NEW PAINTED PEDESTRIAN CROSSING
- NEW 'FIRE ROUTE' SIGN
- NEW 'NO ENTRY BUS ONLY' SIGN
- NEW 'NO BUS PARKING BEYOND LINE' SIGN
- NEW BOLLARD
- NEW CONCRETE CURB
- NEW DEPRESSED CONCRETE CURB
- NEW BICYCLE RACK
- EXISTING FLAG POLE
- EXISTING CATCH BASIN
- EXISTING UTILITY POLE
- EXISTING LIGHT STANDARD
- NEW PARKING LOT LIGHT STANDARD (REFER TO ELECTRICAL)
- EXISTING GOAL POST
- EXISTING MAN HOLE
- NEW MAN HOLE. REFER TO CIVIL
- NEW CATCH BASIN. REFER TO CIVIL
- EXISTING FENCE
- PROPERTY LOT LINE
- PROPERTY SETBACK LINES
- FIRE ROUTE

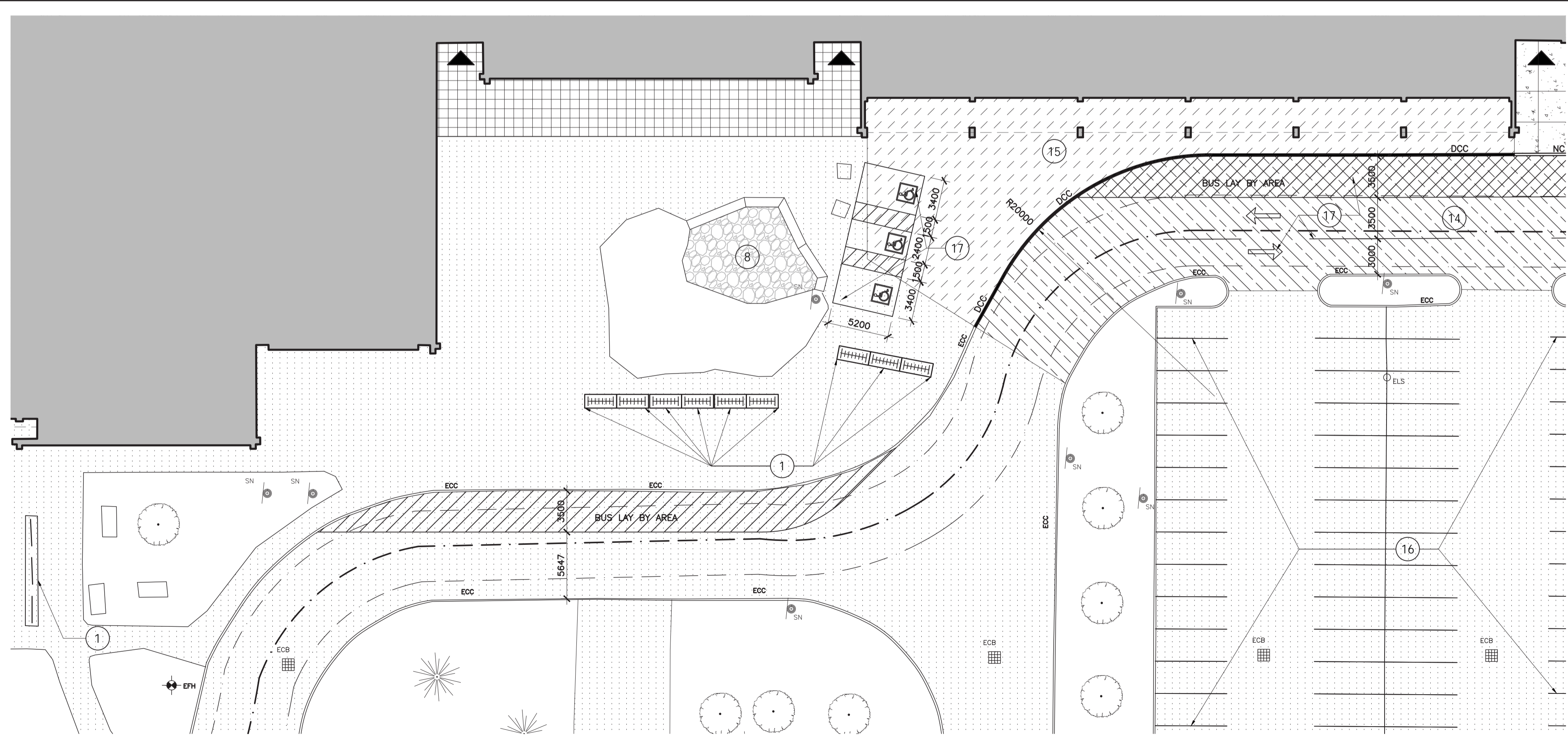
- EXISTING TREE TO REMAIN, REFER TO LANDSCAPE DOCUMENTS
- EXISTING PORTABLE CLASSROOM
- FUTURE PORTABLE CLASSROOM
- NEW TREES - SEE LANDSCAPE DRAWINGS.

DRAWING NOTES

- |  |  |
|--|--|
| 1 NEW GATE. REFER TO A004                  | 14 NEW TYPE 1 HEAVY DUTY ASPHALT. REFER TO SPECIFICATION                       |
| 2 EXISTING GATE.                           | 15 NEW TYPE 2 MEDIUM DUTY ASPHALT. REFER TO SPECIFICATION                      |
| 3 EXISTING BICYCLE RACK.                   | 16 EXISTING PAINTED PARKING LINES  |
| 4 NEW BICYCLE RACK. REFER TO SPECIFICATION | 17 NEW PAINTED LINE MARKINGS, HANDICAP SYMBOLS, TRAFFIC ARROWS, CROSSWALK ETC. |
| 5 EXISTING CHAINLINK FENCE.                | 18 NEW SOD AND TOP SOIL. ALSO REFER TO LANDSCAPE.                              |
| 6 EXISTING SPORTS FIELD AND RUNNING TRACK. | 19 DEPRESSED CONCRETE CURB DOWN TO ASPHALT PATH. ASPHALT PATH TO BE CONTINUOUS |
| 7 EXISTING WOODED AREA.                    | 20 NEW 2m WIDE ASPHALT PATHWAY   |
| 8 EXISTING ROCKY OUTCROP.                  | 21 NEW CONCRETE PAVING C/W SAWCUTS @ 3100 O.C. MAX                             |
| 9 EXISTING PORTABLE CLASSROOM.             |  |
| 10 FUTURE PORTABLE CLASSROOM.              |  |
| 11 EXISTING LOADING SPACES.                |  |
| 12 NEW LOADING SPACES.                     |  |
| 13 TACTILE WALKING SURFACE INDICATOR       |  |



1 PARTIAL SITE PLAN @ PORTABLES  
A003 1:250



2 PARTIAL SITE PLAN @ NEW BUS LAYBY  
A003 1:250



OTTAWA-CARLETON DISTRICT SCHOOL BOARD

ISSUE NO.	REV. NO.	DATE	ISSUE
2	0	2024/12/13	ISSUED FOR SITE PLAN CONTROL
1	0	2024/07/24	ISSUED FOR PHASE 2 SITE PLAN CONTROL

LES IDÉES, CONCEPTS, DISPOSITIONS ET PLANS MONTRÉS OU REPRÉSENTÉS PAR CE DESSIN APPARTIENNENT À EDWARD J. CUHACI AND ASSOCIATES ARCHITECTS INC. ET ONT ÉTÉ CRÉÉS, ET DÉVELOPPÉS POUR ÊTRE UTILISÉS DANS LE CADRE DU PRÉSENT PROJET. ILS NE DOIVENT PAS ÊTRE UTILISÉS À D'AUTRES FINS NI COMMUNIQUÉS À QUI QUE CE SOIT SANS LA PERMISSION ÉCRITE DE EDWARD J. CUHACI AND ASSOCIATES ARCHITECTS INC.

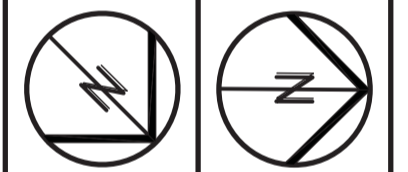
L'ARCHITECTE DÉCLINE TOUTE RESPONSABILITÉ DÉCOULANT DE PROBLÈMES FAISANT SUITE AU NON RESPECT DES PLANS ET DEVIS OU DE L'INTENTION DU CONCEPT QU'ILS TRANSMETTENT, OU DE TOUTS PROBLÈMES POUVANT RÉSULTER DU DÉFAUT DE TIERS D'OBTENIR OU DE SUIVRE LES INSTRUCTIONS DE L'ARCHITECTE RELATIVEMENT AUX ERREURS, OMISSIONS, INCOHÉRENCES, AMBIGUITÉS OU CONTRADICTIONS ALLÉGUÉS.

L'ENTREPRENEUR DOIT VÉRIFIER TOUTES LES DIMENSIONS SUR PLACE ET INFORMER L'ARCHITECTE DE TOUT ÉCART AVANT LE DÉBUT DES TRAVAUX. NE PAS MESURER LES DESSINS À L'ÉCHELLE.

ALL IDEAS, DESIGNS, ARRANGEMENTS, AND PLANS INDICATED OR REPRESENTED BY THIS DRAWING ARE OWNED BY AND THE PROPERTY OF EDWARD J. CUHACI AND ASSOCIATES INC. AND WERE CREATED, EVOLVED, AND DEVELOPED FOR USE ON AND IN CONNECTION WITH THE SPECIFIED PROJECT. NONE OF THE IDEAS, DESIGNS, ARRANGEMENTS OR PLANS SHALL BE USED BY OR DISCLOSED TO ANY PERSON, FIRM, OR CORPORATION FOR ANY PURPOSE WHATSOEVER WITHOUT THE WRITTEN PERMISSION OF EDWARD J. CUHACI AND ASSOCIATES INC.

THE ARCHITECT WAIVES ANY AND ALL RESPONSIBILITY AND LIABILITY FOR PROBLEMS WHICH ARISE FROM FAILURE TO FOLLOW THESE PLANS, SPECIFICATIONS, AND THE DESIGN INTENT THEY CONVEY, OR FOR PROBLEMS WHICH ARISE FROM OTHERS' FAILURE TO OBTAIN AND/OR FOLLOW THE ARCHITECT'S GUIDANCE WITH RESPECT TO ANY ERRORS, OMISSIONS, INCONSISTENCIES, AMBIGUITIES OR CONFLICTS WHICH ARE ALLEGED.

CONTRACTOR TO VERIFY ALL DIMENSIONS AND NOTIFY THE ARCHITECT OF ANY DISCREPANCIES BEFORE WORK COMMENCES. DO NOT SCALE DRAWINGS



TRUE NORTH PLAN NORTH



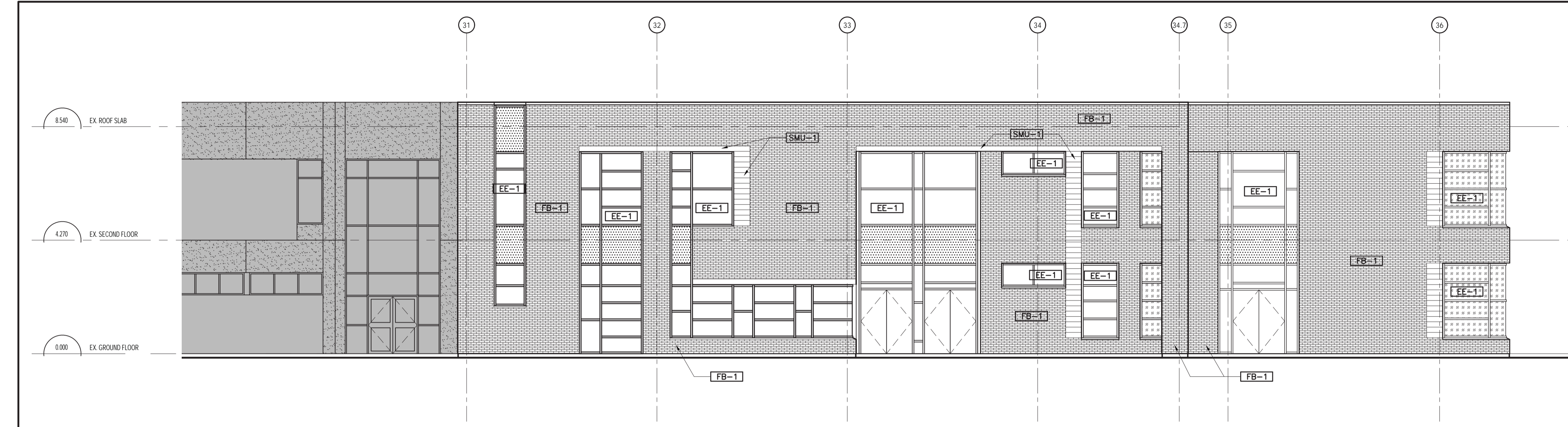
**EDWARD J CUHACI & ASSOCIATES ARCHITECTS Inc.**  
171 Stater St, Suite 100, Ottawa, Ontario, K1P 5H7  
Fax: (613) 236-1944 Telephone: (613) 236-7135 E-mail: info@cuhaci.com

PROJECT/TITRE DU PROJET  
**EARL OF MARCH SECONDARY SCHOOL ADDITION 2024**  
4 THE PARKWAY  
KANATA, ON, K2K 1Y4

OTTAWA-CARLETON DISTRICT SCHOOL BOARD  
133 GREENBANK RD, OTTAWA

DRAWING/TITRE DU DESSIN  
**PARTIAL SITE PLAN**

SCALE	PROJ. No	ISSUE No	REV. No
ECHELLE	1:250	2411	2 0
DRAWN BY	AL/SL	DRAWING/DESSIN	
CHECKED BY	XF	<b>A003</b>	
DATE	2024	ACAD FILE/FICHER: 2411-A003.DWG	



**1**  
A200  
**NORTHEAST ELEVATION**  
1:100

### ELEVATION LEGEND

- EXISTING BUILDING
- EXISTING PRECAST CONCRETE PANEL
- VISION INSULATED GLAZING UNITS IN ALUMINUM CURTAIN WALL
- INSULATED SPANDEL GLAZING WITH INSULATED BACK PAN BEHIND IN ALUMINUM CURTAIN WALL
- VISION INSULATED GLAZING UNITS WITH BIRD SAFE MARKINGS
- BRICK VENEER
- SMU BLOCK VENEER

### DRAWING NOTES

- EE-1 GLAZED ALUMINUM CURTAIN WALL FRAMING
- EE-2 OVERHEAD DOOR
- EE-3 MAN DOOR

ISSUE NO.	REV. NO.	DATE	ISSUE
2	0	2024/12/13	ISSUED FOR SITE PLAN CONTROL
1	0	2024/07/24	ISSUED FOR PHASE 2 SITE PLAN CONTROL

LES IDÉES, CONCEPTS, DISPOSITIONS ET PLANS MONTRÉS OU REPRÉSENTÉS PAR CE DESSIN APPARTIENNENT À EDWARD J. CUHACI AND ASSOCIATES ARCHITECTS INC. ET ONT ÉTÉ CRÉÉS, ET DÉVELOPPÉS POUR ÊTRE UTILISÉS DANS LE CADRE DU PRÉSENT PROJET. ILS NE DOIVENT PAS ÊTRE UTILISÉS À D'AUTRES FINS NI COMMUNIQUÉS À QUI QUE CE SOIT SANS LA PERMISSION ÉCRITE DE EDWARD J. CUHACI AND ASSOCIATES ARCHITECTS INC.

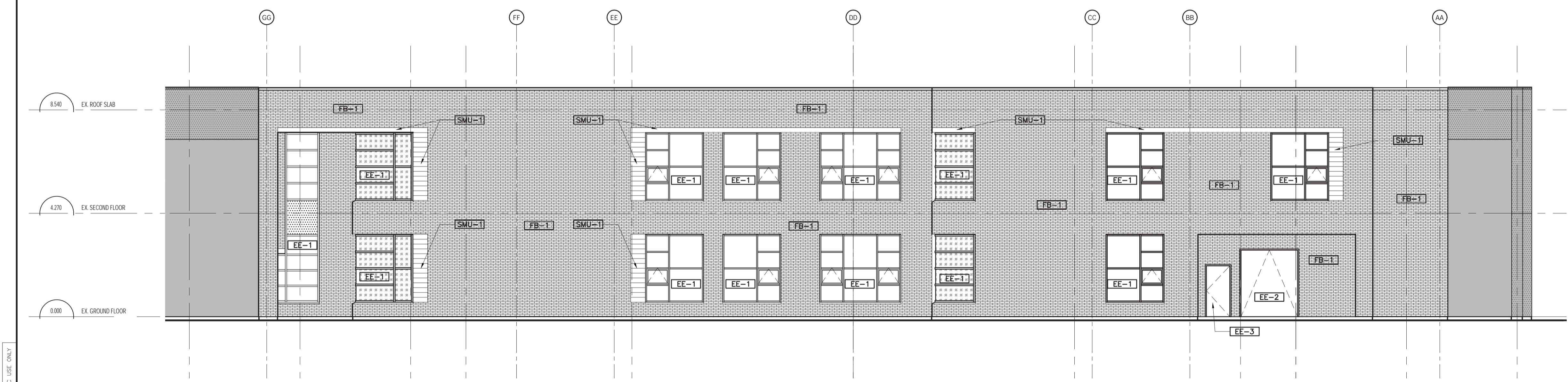
L'ARCHITECTE DÉCLINE TOUTE RESPONSABILITÉ DÉCOULANT DE PROBLÈMES FAISANT SUITE AU NON RESPECT DES PLANS ET DEVIS OU DE L'INTENTION DU CONCEPT QU'ILS TRANSMETTENT, OU DE TOUS PROBLÈMES POUVANT RÉSULTER DU DÉFAUT DE TIERS D'OBTENIR OU DE SUIVRE LES INSTRUCTIONS DE L'ARCHITECTE RELATIVEMENT AUX ERREURS, OMISSIONS, INCOHÉRENCES, AMBIGÜITÉS OU CONTRADICTIONS ALLEGUÉS.

L'ENTREPRENEUR DOIT VÉRIFIER TOUTES LES DIMENSIONS SUR PLACE ET INFORMER L'ARCHITECTE DE TOUT ÉCART AVANT LE DÉBUT DES TRAVAUX. NE PAS MESURER LES DESSINS À L'ÉCHELLE.

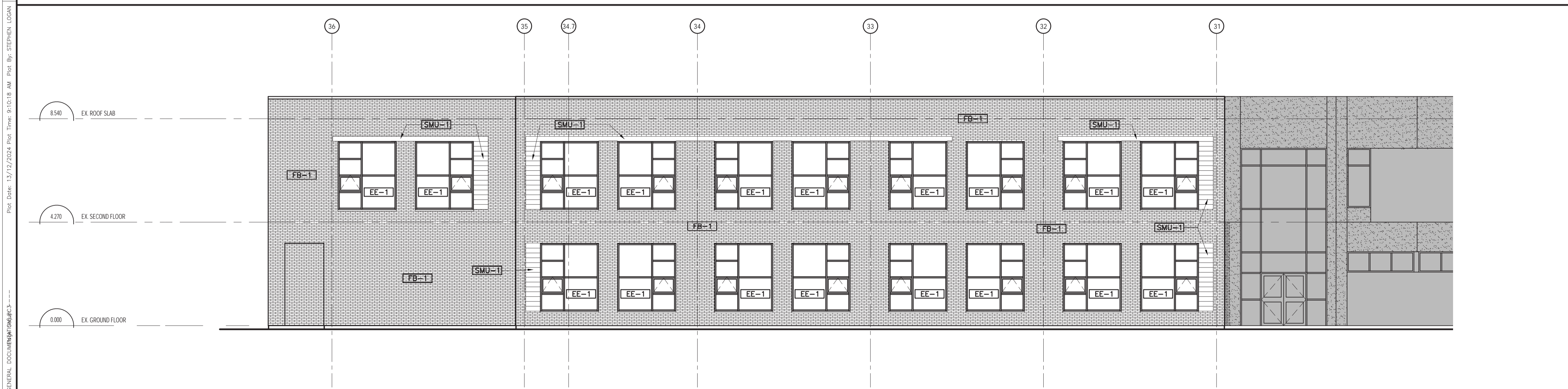
ALL IDEAS, DESIGNS, ARRANGEMENTS, AND PLANS INDICATED OR REPRESENTED BY THIS DRAWING ARE OWNED BY AND THE PROPERTY OF EDWARD J. CUHACI AND ASSOCIATES INC. AND WERE CREATED, EVOLVED, AND DEVELOPED FOR USE ON AND IN CONNECTION WITH THE SPECIFIED PROJECT. NONE OF THE IDEAS, DESIGNS, ARRANGEMENTS OR PLANS SHALL BE USED BY OR DISCLOSED TO ANY PERSON, FIRM, OR CORPORATION FOR ANY PURPOSE WHATSOEVER WITHOUT THE WRITTEN PERMISSION OF EDWARD J. CUHACI AND ASSOCIATES INC.

THE ARCHITECT WAIVES ANY AND ALL RESPONSIBILITY AND LIABILITY FOR PROBLEMS WHICH ARISE FROM FAILURE TO FOLLOW THESE PLANS, SPECIFICATIONS, AND THE DESIGN INTENT THEY CONVEY, OR FOR PROBLEMS WHICH ARISE FROM OTHERS' FAILURE TO OBTAIN AND/OR FOLLOW THE ARCHITECT'S GUIDANCE WITH RESPECT TO ANY ERRORS, OMISSIONS, INCONSISTENCIES, AMBIGUITIES OR CONFLICTS WHICH ARE ALLEGED.

CONTRACTOR TO VERIFY ALL DIMENSIONS AND NOTIFY THE ARCHITECT OF ANY DISCREPANCIES BEFORE WORK COMMENCES. DO NOT SCALE DRAWINGS



**2**  
A200  
**NORTHWEST ELEVATION**  
1:100



**3**  
A200  
**SOUTHWEST ELEVATION**  
1:100



**EDWARD J CUHACI & ASSOCIATES ARCHITECTS Inc.**  
171 Stater St, Suite 100, Ottawa, Ontario, K1P 5H7  
Fax: (613) 236-1944 Telephone: (613) 236-7135 E-mail: info@cuhaci.com

PROJECT TITLE/TITRE DU PROJET  
**EARL OF MARCH SECONDARY SCHOOL ADDITION 2024**  
4 THE PARKWAY  
KANATA, ON, K2K 1Y4

OTTAWA CARLETON DISTRICT SCHOOL BOARD  
133 GREENBANK RD, OTTAWA

DRAWING TITLE/TITRE DU DESSIN  
**ELEVATIONS**

SCALE	PROJ. No	ISSUE No	REV. No
ECHELLE AS SHOWN	2411	2	0
DRAWN BY	DRAWING/DESSIN		
DESSINE PAR SL			
CHECKED BY			
VERIFIE PAR XF			
DATE	2024		

A200

ACAD FILE/FICHER: 2411-A200 SPC DWG

Plot Date: 13/12/2024 Plot Time: 9:10:18 AM Plot By: STEPHEN LOGAN Plot Stamp For: EIC USE ONLY