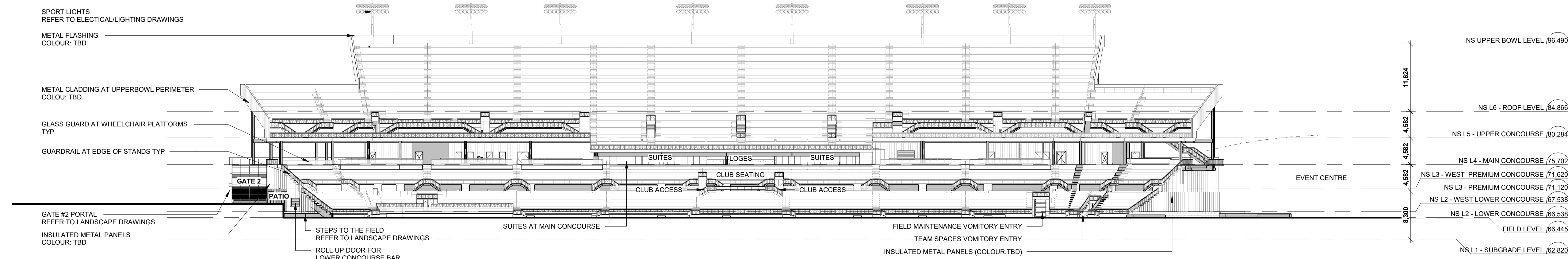
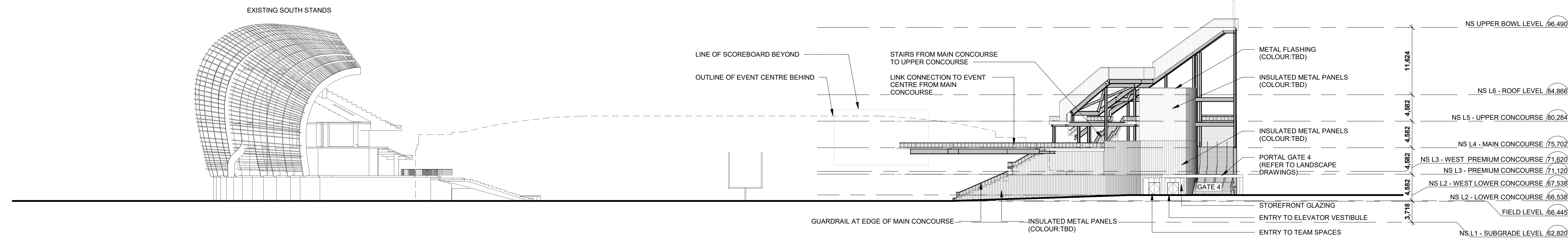


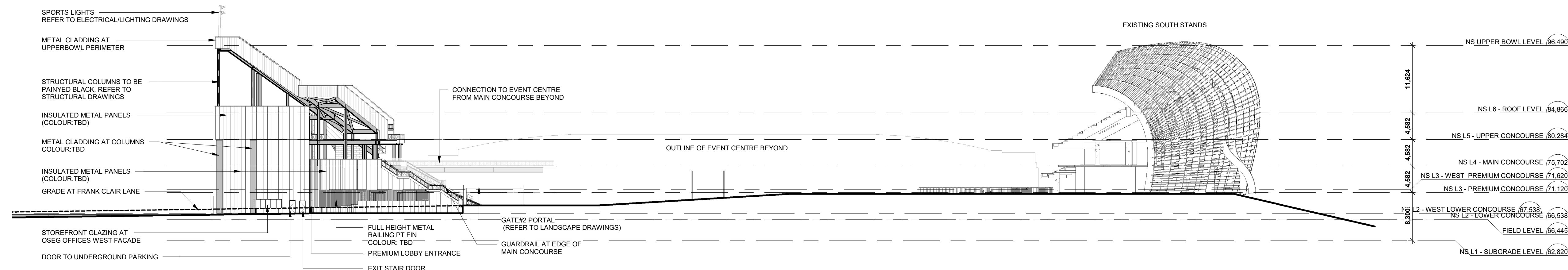
4 NORTH STANDS - NORTH ELEVATION DD - SPA
1:400



3 NORTH STANDS - SOUTH ELEVATION DD - SPA
1:400



2 NORTH STANDS - EAST ELEVATION DD - SPA
1:400



1 NORTH STANDS - WEST ELEVATION DD - SPA
1:400

REFER TO NS-A1-001 FOR GENERAL NOTES AND DRAWING LEGEND

NO.	DESCRIPTION	DATE
4	ISSUED FOR SITE PLAN APPROVAL	2024/12/19
3	ISSUED FOR 90% DD - CLASS B ESTIMATE	2024/11/29
2	ISSUED FOR 50% DD	2024/10/18
1	ISSUED FOR DD PROGRESS SET	2024/10/04

REVISIONS/ ISSUES

CONTRACTOR SHALL CHECK AND VERIFY ALL DIMENSIONS
AND REPORT ANY OMISSIONS OR DISCREPANCIES TO THE
ARCHITECT BEFORE PROCEEDING WITH THE WORK.
DO NOT SCALE THE DRAWINGS

SEAL

THIS DOCUMENT IS RELEASED
FOR THE PURPOSE OF
PRELIMINARY SUBMITTAL

IT IS NOT TO BE USED FOR
CONSTRUCTION
PURPOSES

DRAWN	MM
DATE	24/11/29
CHECKED	TF

LANDSDOWNE 2.0 EVENT CENTRE, NORTH SIDE STANDS AND PUBLIC REALM ENHANCMENTS

1015 Bank st, Ottawa, ON K1S 5J3

DWG. TITLE
OVERALL ELEVATIONS - SPA

SCALE	1:400	DWG. NO.	NS-A3-001"
PROJ. NO.	2008.3		