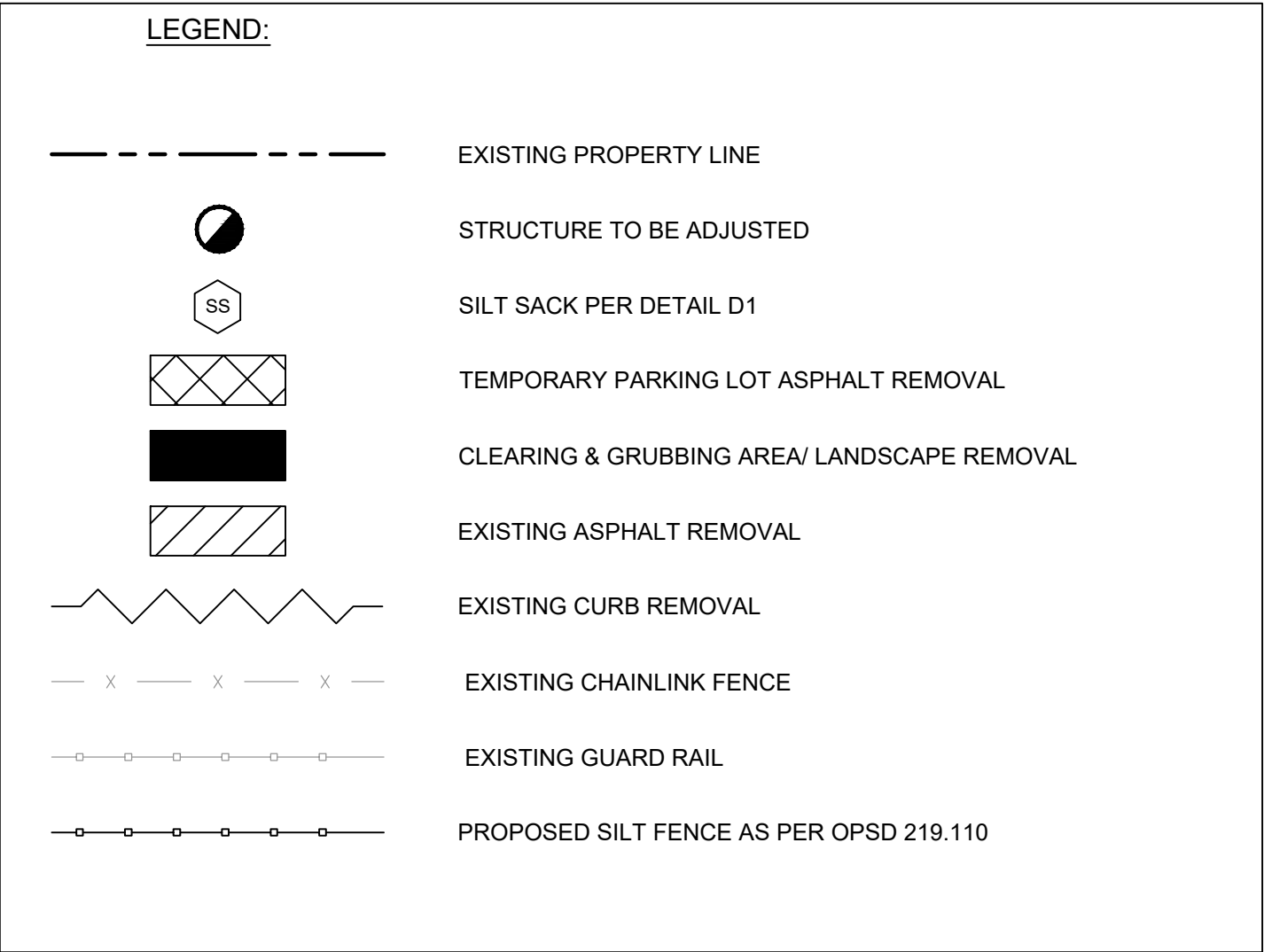
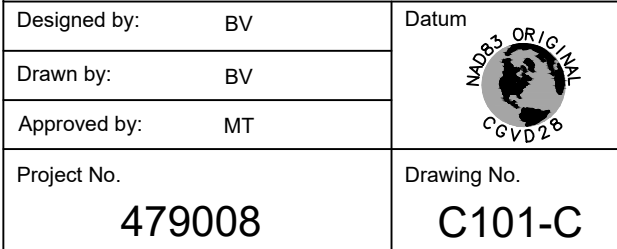
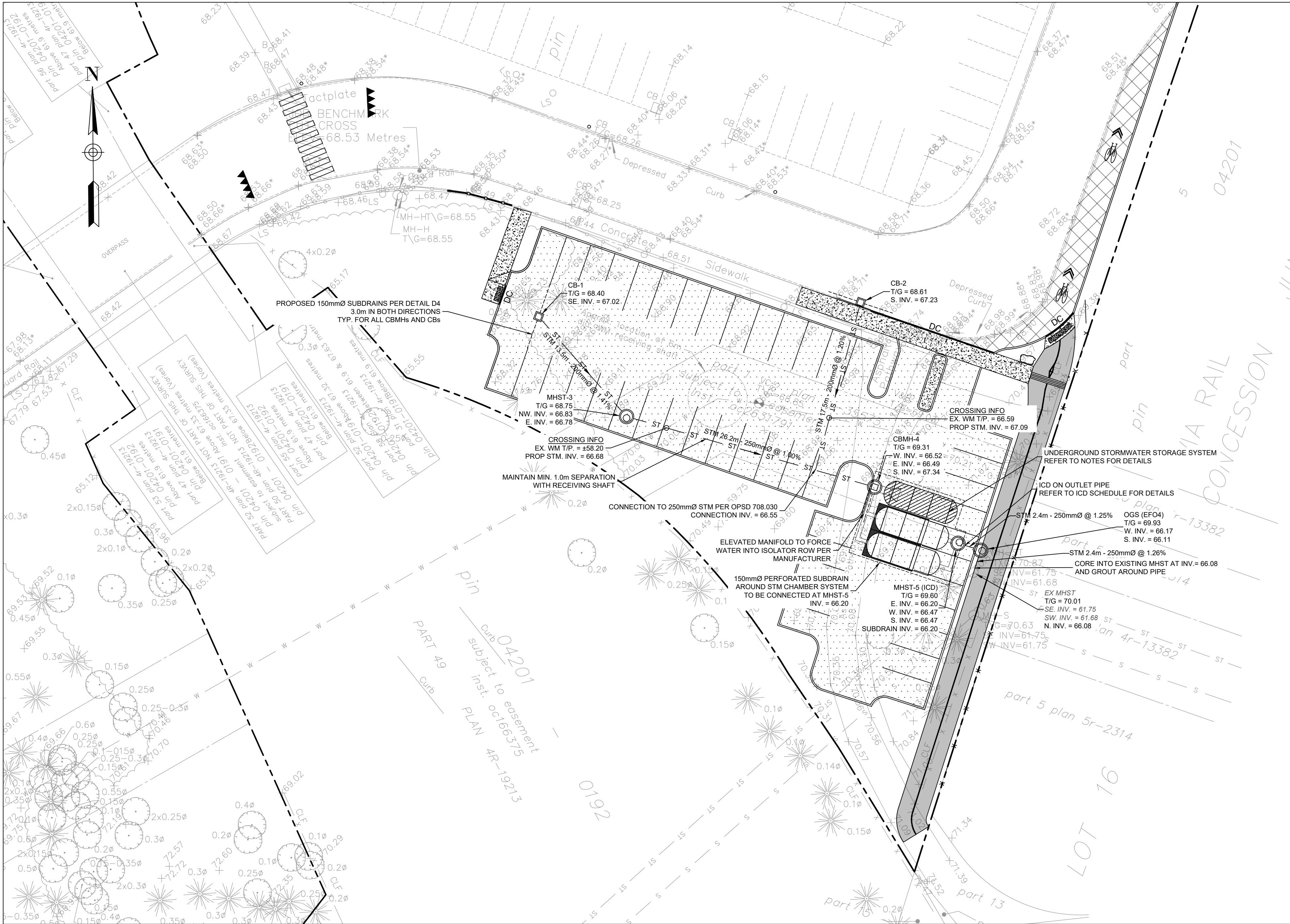


#19228	D07-12-25-0006
--------	----------------



- PROVIDE PERMANENT COVER CONSISTING OF TOPSOIL AND SEED TO DISTURBED AREAS.
- ALL SEDIMENT AND EROSION CONTROL MEASURES TO BE REMOVED BY THE CONTRACTOR FOLLOWING THE COMPLETION OF WORK AND AFTER DISTURBED AREAS HAVE BEEN REHABILITATED AND STABILIZED. THIS INCLUDES REMOVE STRAW BALE FLOW CHECK DAMS, SILT FENCES AND FILTER CLOTHS ON CATCH BASINS AND MANHOLE COVERS.
- INSPECT AND CLEAN CATCH BASIN SUMPS AND STORM SEWERS.





NOTES: SEWER

- CONTRACTOR TO CONFIRM ELEVATION OF EXISTING STORM AND SANITARY SEWERS AT PROPOSED CONNECTION POINTS AND REPORT ANY DISCREPANCIES TO THE ENGINEER BEFORE COMMENCING ANY WORK.
- ALL WORK SHALL BE PERFORMED, AS APPLICABLE IN ACCORDANCE WITH OPSS 407, 408 AND 410.
- ALL STORM AND SANITARY SEWERS INSTALLED BELOW THE GROUNDWATER TABLE ELEVATION SHALL BE WATER-TIGHT AND INFILTRATION TESTS SHALL BE CARRIED OUT ACCORDING TO OPSS MUNI 410.
- PIPE MATERIAL TO BE PVC SDR-35 AND CONFORMING TO OPSS 1841, UNLESS INDICATED OTHERWISE. PVC SEWERS TO BE INSTALLED PER OPSD 802.010 (MODIFIED). BEDDING AND COVER MATERIALS TO BE OPSS 1010 GRANULAR 'A' CRUSHER-RUN LIMESTONE BEDDING COMPACTED TO 95% SPMD. ALL SEWERS WITH LESS THAN 1.5 METERS OF COVER ARE SUBJECTED TO INSULATION PER CITY OF OTTAWA STD DETAIL. S35.
- PIPE BACKFILL MATERIAL TO BE APPROVED NATIVE MATERIAL OR SELECT SUBGRADE MATERIAL IN CONFORMANCE WITH OPSS 212.
- ALL MAINTENANCE HOLES AND CATCH BASIN MAINTENANCE HOLES TO BE 1200mmØ AS PER OPSD 701.010, UNLESS INDICATED OTHERWISE. MAINTENANCE HOLES AND CATCH BASIN MAINTENANCE HOLES TO BE INSTALLED PER OPSD 407.
- ALL CATCH BASINS TO BE 600x600mm AS PER OPSD 705.010, UNLESS INDICATED OTHERWISE. CATCH BASINS TO BE INSTALLED PER OPSD 407.
- EXCAVATING, BACKFILLING, AND COMPACTING REQUIRED FOR MAINTENANCE HOLES, CATCH BASIN MAINTENANCE HOLES, AND CATCH BASINS TO BE COMPLETED AS PER OPSD 402. THEY ARE TO BE BACKFILLED WITH OPSS GRANULAR 'B' COMPACTED TO 98% SPMD. JOINTS BETWEEN SECTIONS TO BE WRAPPED WITH NON-WOVEN GEOTEXTILE.
- FOR SANITARY STRUCTURES: CAST IRON MAINTENANCE HOLE COVER AS PER OPSD 401.010 TYPE 'A'.
- FOR STORM STRUCTURES: CAST IRON CATCH BASIN MAINTENANCE HOLE COVER AS PER OPSD 401.010 TYPE 'B' AND CAST IRON CATCH BASIN COVER AS PER OPSD 400.020.
- SANITARY MAINTENANCE HOLES REQUIRE BENCHING AS PER OPSD 701.021.
- THE CONTRACTOR IS RESPONSIBLE FOR MAKING OR ARRANGING ALL CONNECTIONS TO THE EXISTING SEWERS AS PER MUNICIPAL REQUIREMENTS. PRIOR TO CONNECTION, THE CONTRACTOR MUST PROVIDE, TO THE CONSULTANT / ENGINEER AND THE CITY FOR APPROVAL, ALL TEST RESULTS PERFORMED ON THE INTERNAL SERVICES.
- ADVISE THE CITY PUBLIC WORKS AT LEAST 72 HOURS IN ADVANCE BEFORE ANY CONNECTION TO THE CITY SERVICES. CO-ORDINATE WITH CITY AS REQUIRED.
- TERMINATE AND PLUG ALL SERVICE CONNECTIONS AT 1.0 m FROM EDGE OF THE BUILDING.
- ALL SEWERS TO BE C.C.T.V. INSPECTED BY THE CONTRACTOR AS PER OPSD 409. TWO COPIES OF THE INSPECTION REPORT MUST BE PROVIDED TO THE CONSULTANT AND THE C.C.T.V. INSPECTION IN DVD FORMAT ONLY.

NOTES: UNDERGROUND STORMWATER STORAGE

- UNDERGROUND STORMWATER STORAGE SYSTEM CHAMBER TYPE OR EQUIVALENT
- CHAMBER TYPE: STORMTECH MC-7200 OR APPROVED EQUIVALENT
- STORAGE PROVIDED: 103.9m³ (INCLUDING PERIMETER STONE)
- BOTTOM OF FOUNDATION PAD ELEVATION & PERFORATED SUBDRAIN INVERT: 66.20m.
- BOTTOM OF CHAMBER ELEVATION: 66.43m.
- TOP OF CHAMBER ELEVATION: 67.96m.
- TOP OF SYSTEM (PERIMETER STONE) = 68.26m.
- TOP OF CHAMBER TO BE A MINIMUM OF 600mm BELOW PARKING LOT PAVEMENT AND MAXIMUM 2.1m.
- SYSTEM TO BE COMPLETELY WRAPPED WITH GEOTEXTILE.
- SHOP DRAWINGS FOR UNDERGROUND STORAGE SYSTEM SHALL BE PROVIDED.
- INLET AND OUTLET STRUCTURES (CBM-4 & MHST-5) TO BE OPSD 701.010 CONCRETE MAINTENANCE HOLES

ICD SCHEDULE						
ICD ID	LOCATION	ORIFICE INVERT (m)	FLOW 5y/100y (L/s)	HEAD 5y/100y (m)	EQUIVALENT DIAMETER (mm)	MODEL*
1	MHST-5	66.20	1.9/3.3	0.68/2.04	33	JOHN MEUNIER HYDROVEX 50VHV-1

* ICD SHOP DRAWINGS SHALL BE SUBMITTED TO PARSONS BEFORE COMMENCING ANY WORK

LEGEND:

- EXISTING PROPERTY LINE
- EXISTING WATERMAIN
- EXISTING VALVE BOX
- EXISTING VALVE CHAMBER
- EXISTING SANITARY SEWER AND MAINTENANCE HOLE
- EXISTING STORM SEWER AND MAINTENANCE HOLE
- PROPOSED STORM SEWER AND MAINTENANCE HOLE
- PROPOSED CATCH BASIN MAINTENANCE HOLE WITH 3.0m SUBDRAINS IN BOTH DIRECTIONS
- PROPOSED CATCH BASIN WITH 3.0m SUBDRAINS IN BOTH DIRECTIONS



Surveyor

ANNIS, O'SULLIVAN, VOLLEBECK LTD.
14 CONOURSE GATE, SUITE 500
NEPEAN, ONTARIO, K2E 7S6

TOPOGRAPHIC INFORMATION & BENCHMARK
SURVEY COMPLETED BY ANNIS, O'SULLIVAN, VOLLEBECK LTD. ON MARCH 21, 2024. ELEVATIONS SHOWN ARE GEODETIC AND ARE REFERRED TO THE CGVD28 GEODETIC DATUM, DERIVED FROM CONTROL MONUMENT NO. 019680274 HAVING AN ELEVATION OF 66.322m.

BOUNDARY INFORMATION WAS COMPILED FROM PLANS 4R-19213, 4R-35573 AND 4R-36051

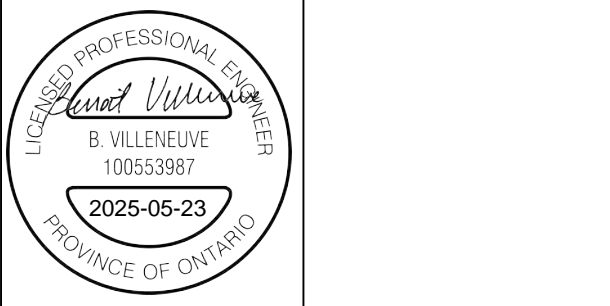
JOB BENCHMARK
CUT CROSS ON SIDEWALK NEAR OVERPASS
ELEVATION = 68.53m

Client

The Ottawa Hospital | L'Hôpital d'Ottawa

THE OTTAWA HOSPITAL
1053 CARLING AVENUE,
OTTAWA, ONTARIO, K1V 4E9
(613) 722-7000

PARSONS
1223 MICHAEL STREET, SUITE 100
GLOUCESTER, ONTARIO, K1J 7T2



4	RE-ISSUED FOR SPA	BV	2025/05/15
3	RE-ISSUED FOR SPA	BV	2025/03/13
2	RE-ISSUED FOR SPA	BV	2025/01/17
1	ISSUED FOR SPA	BV	2024/11/08

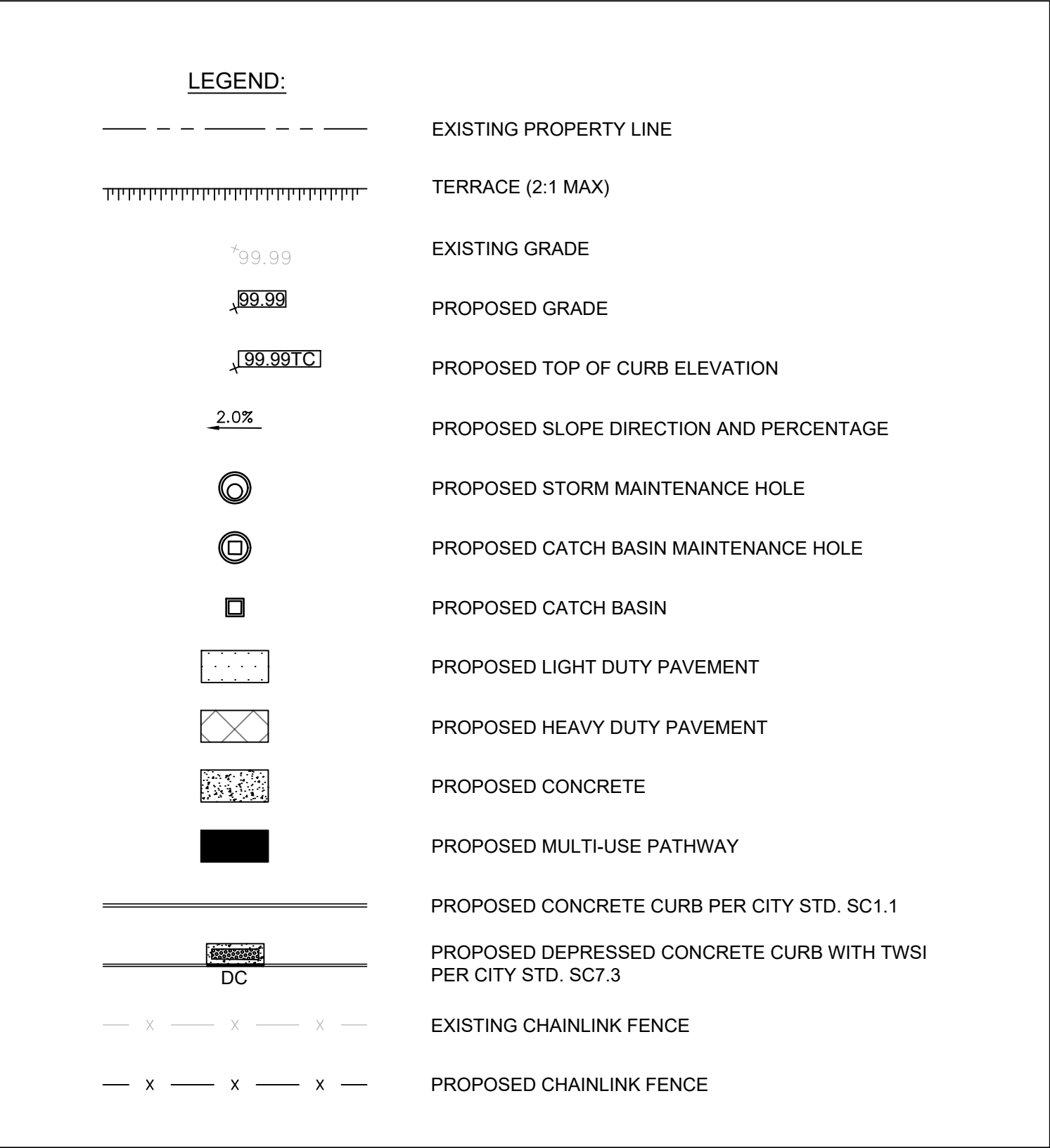
No.	Revision	By	Date (yy/mm/dd)

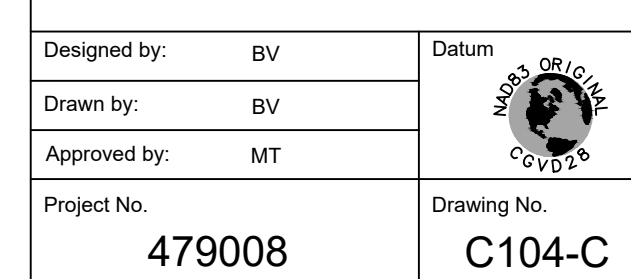
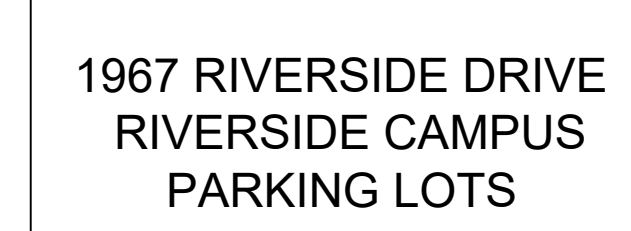
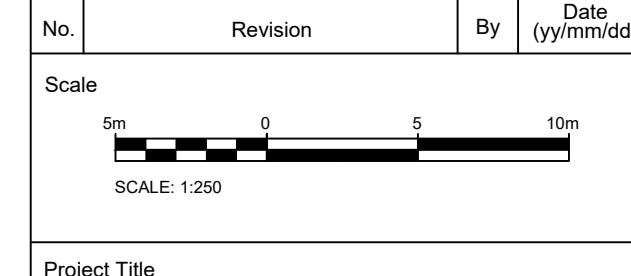
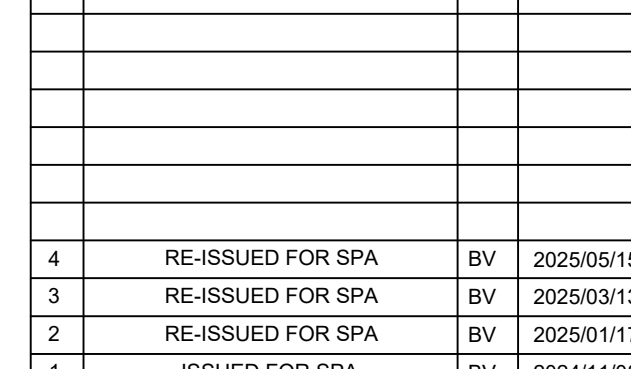
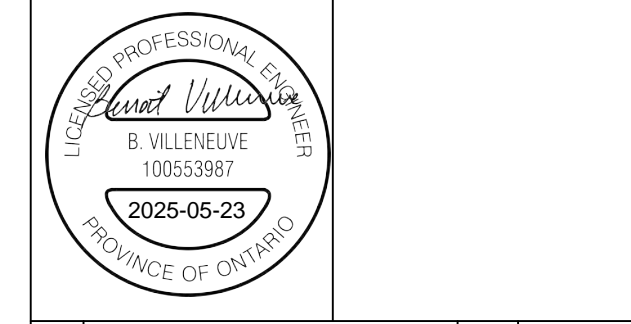
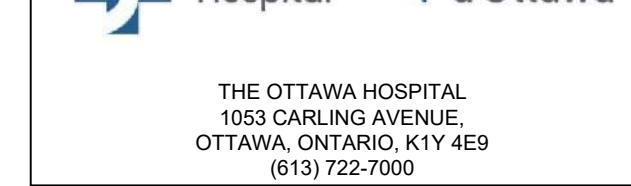
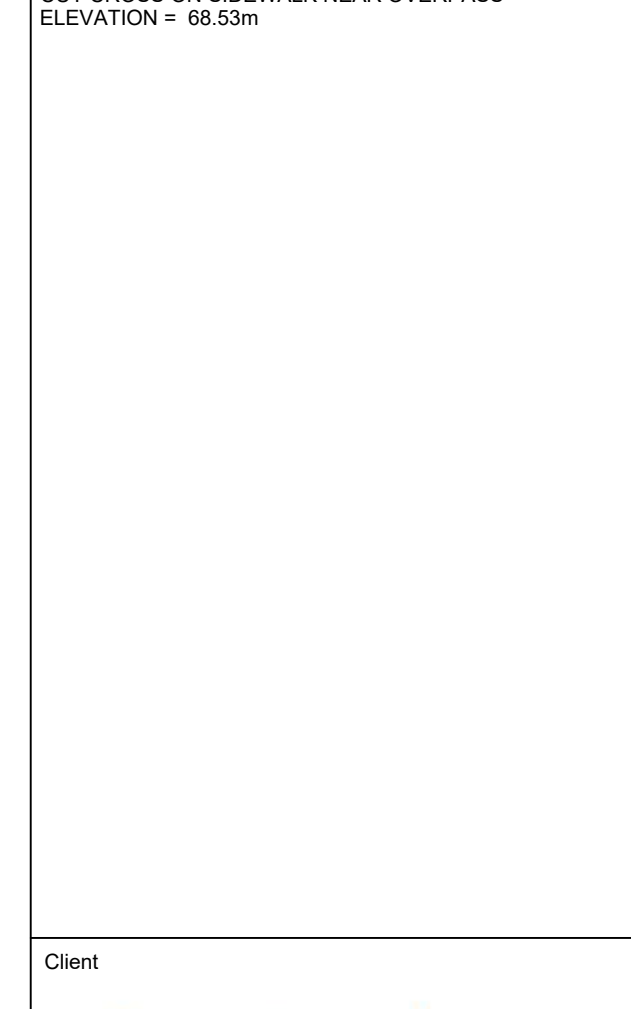
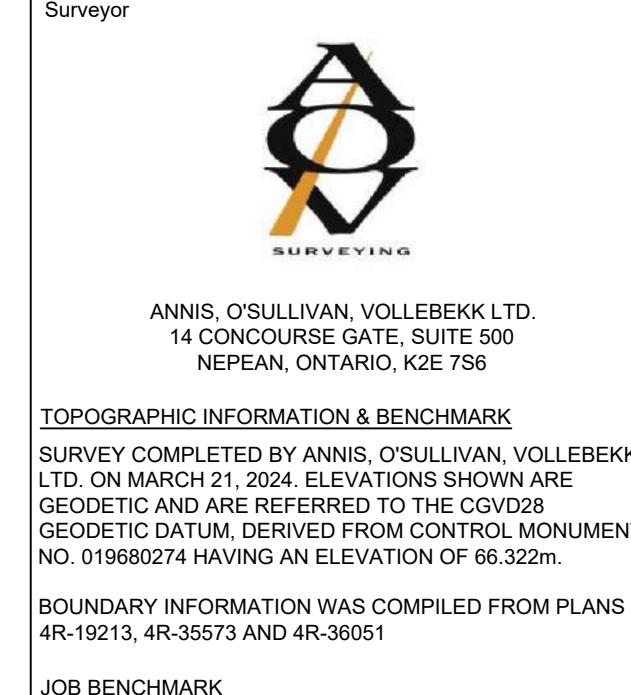
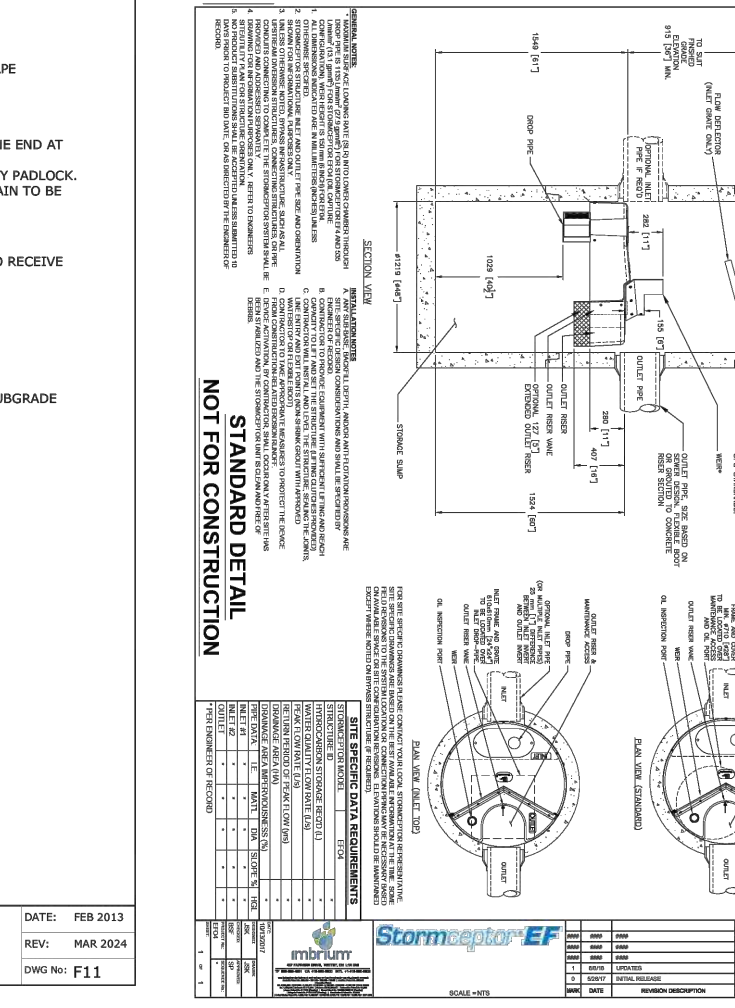
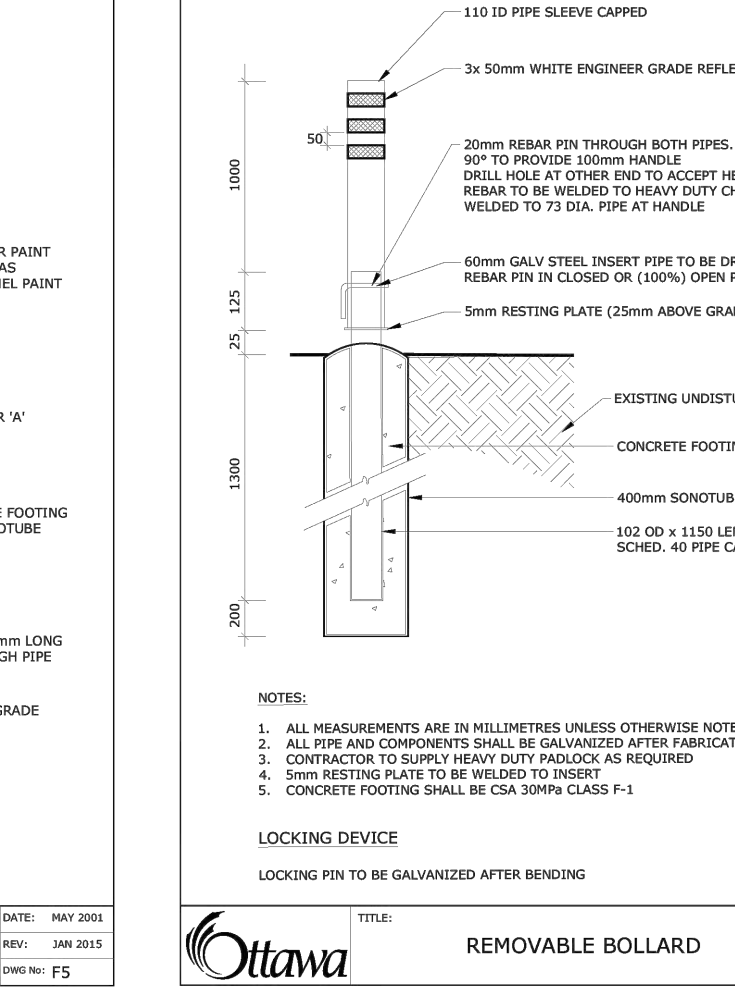
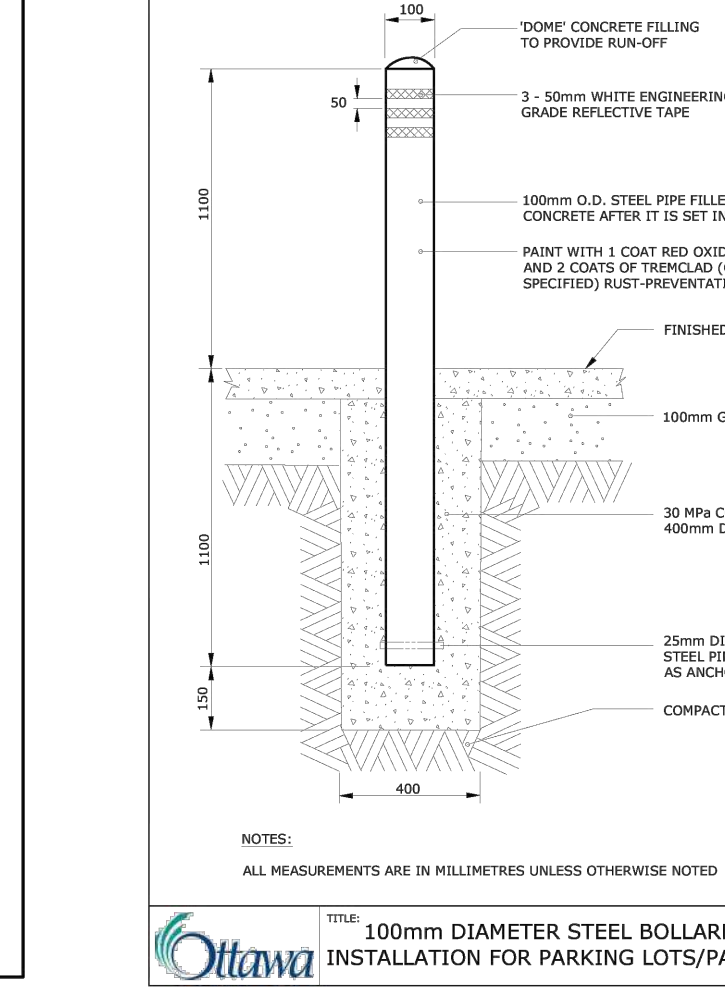
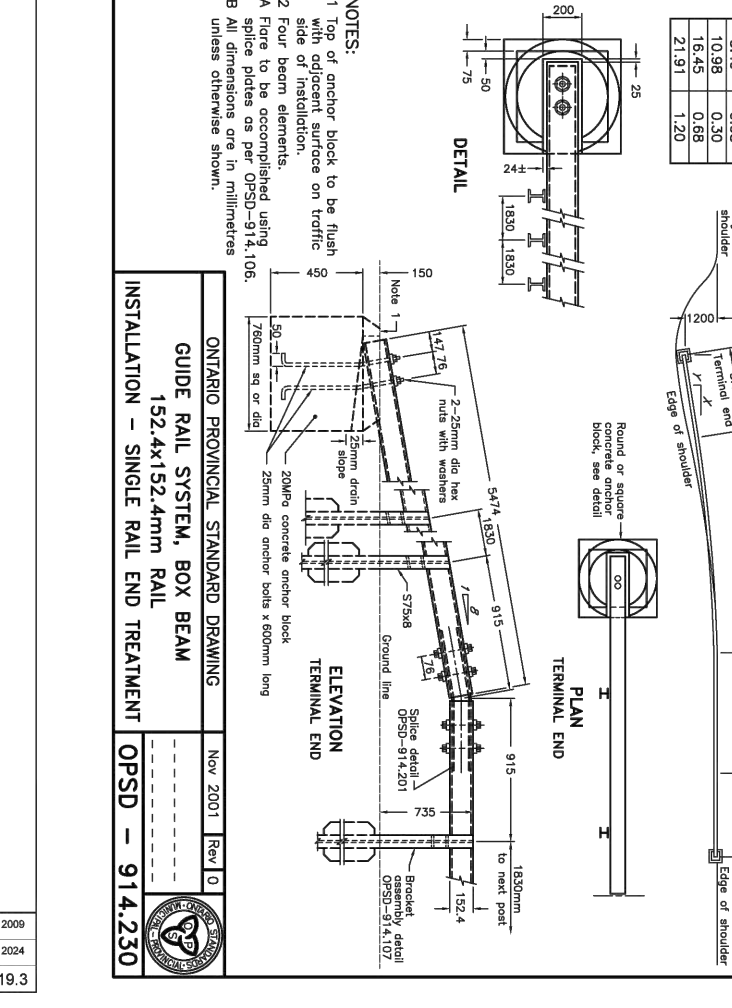
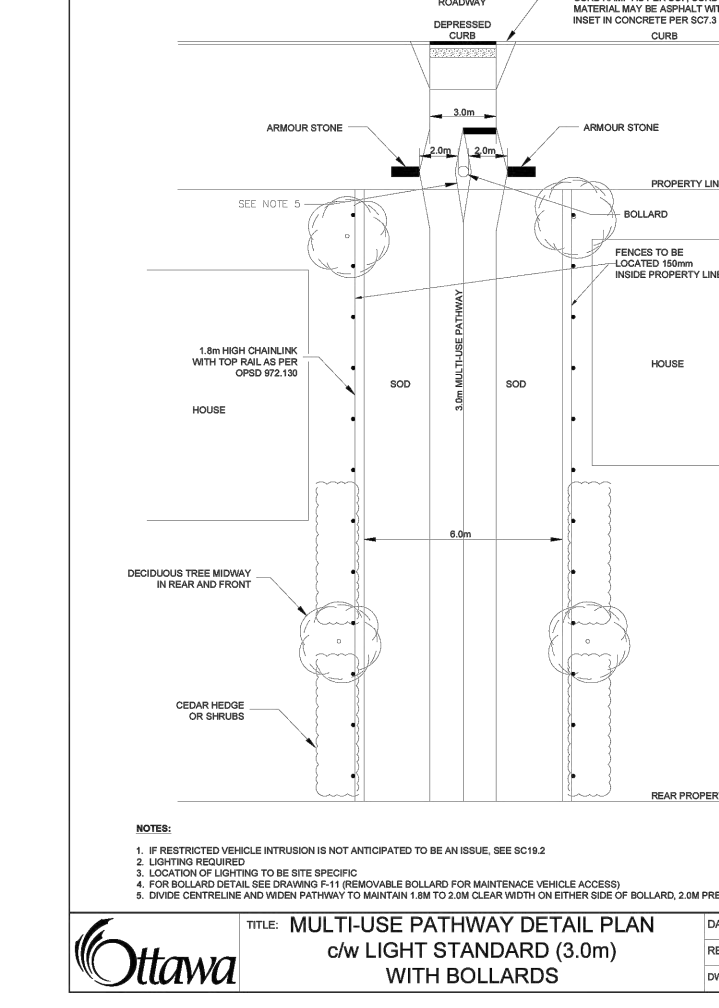
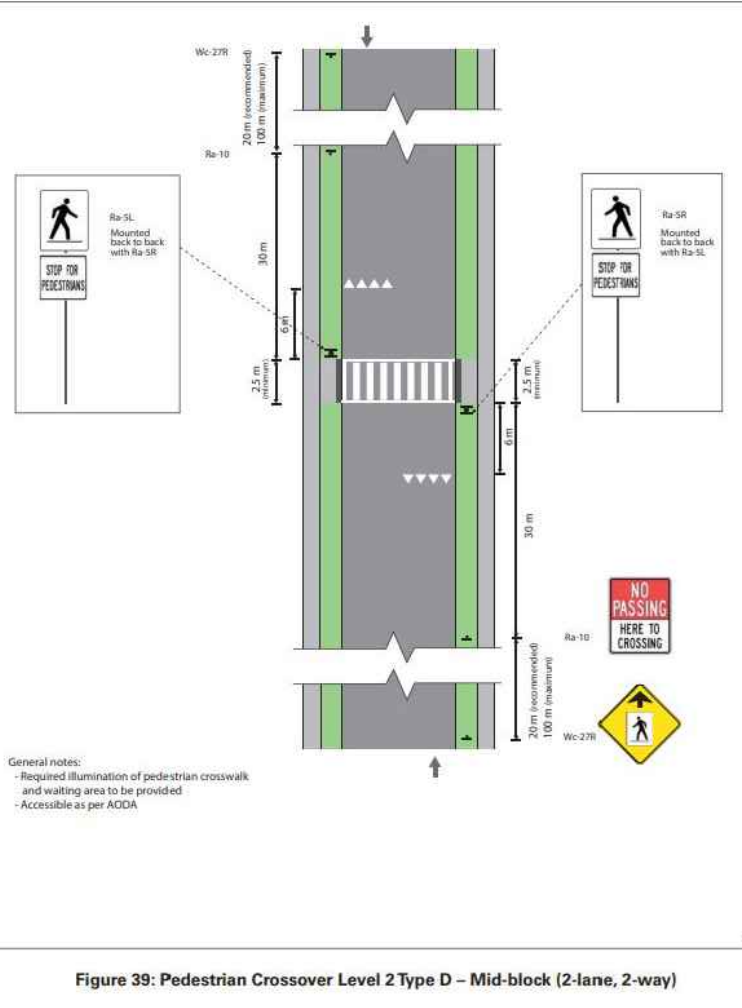
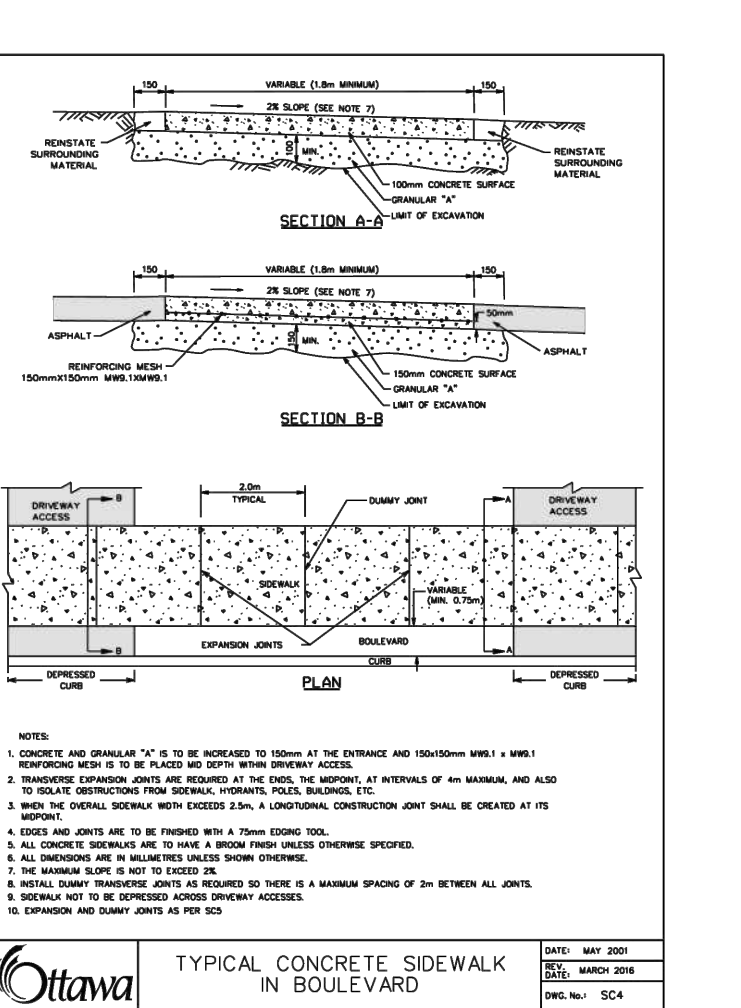
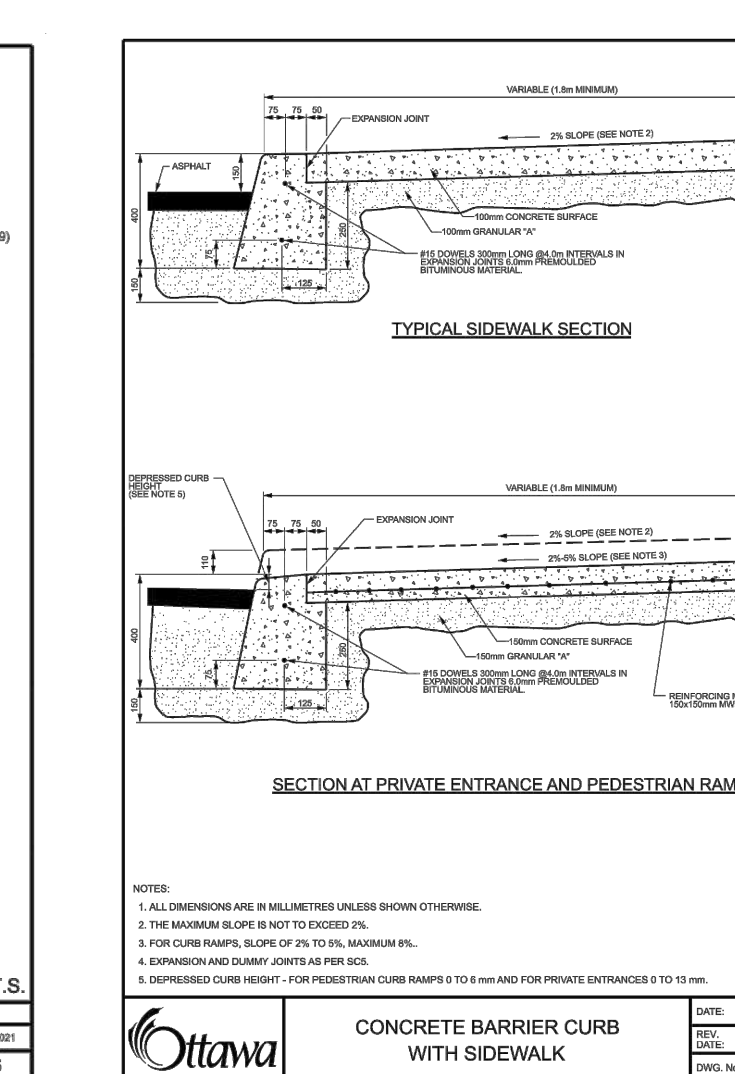
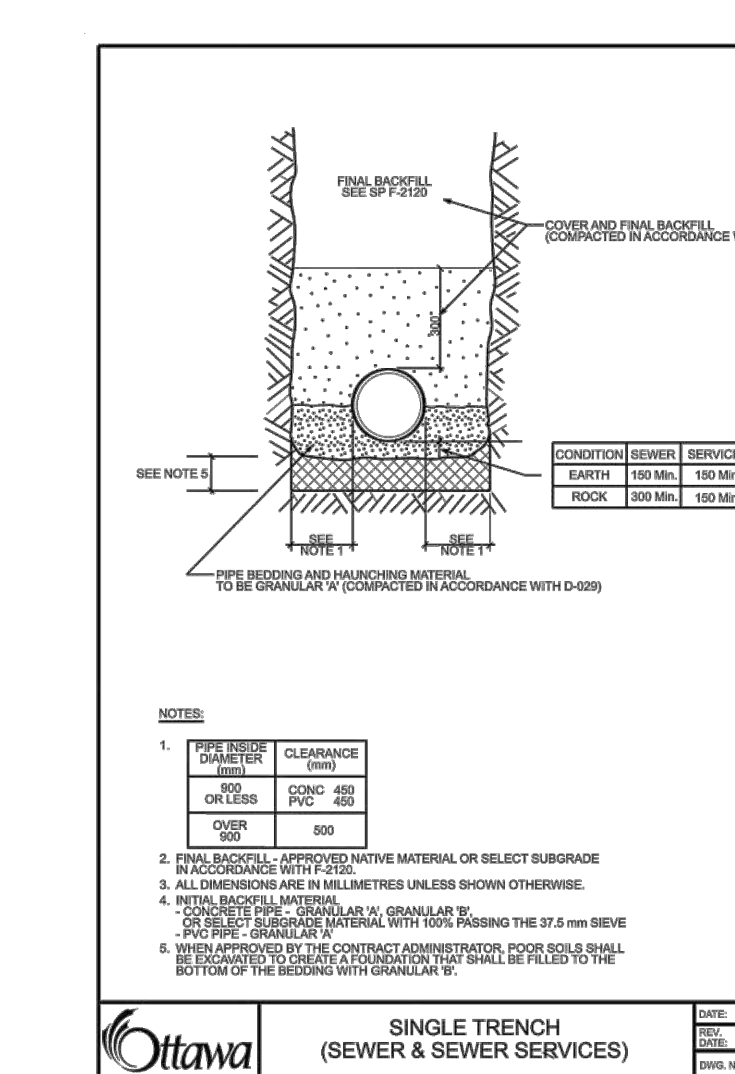
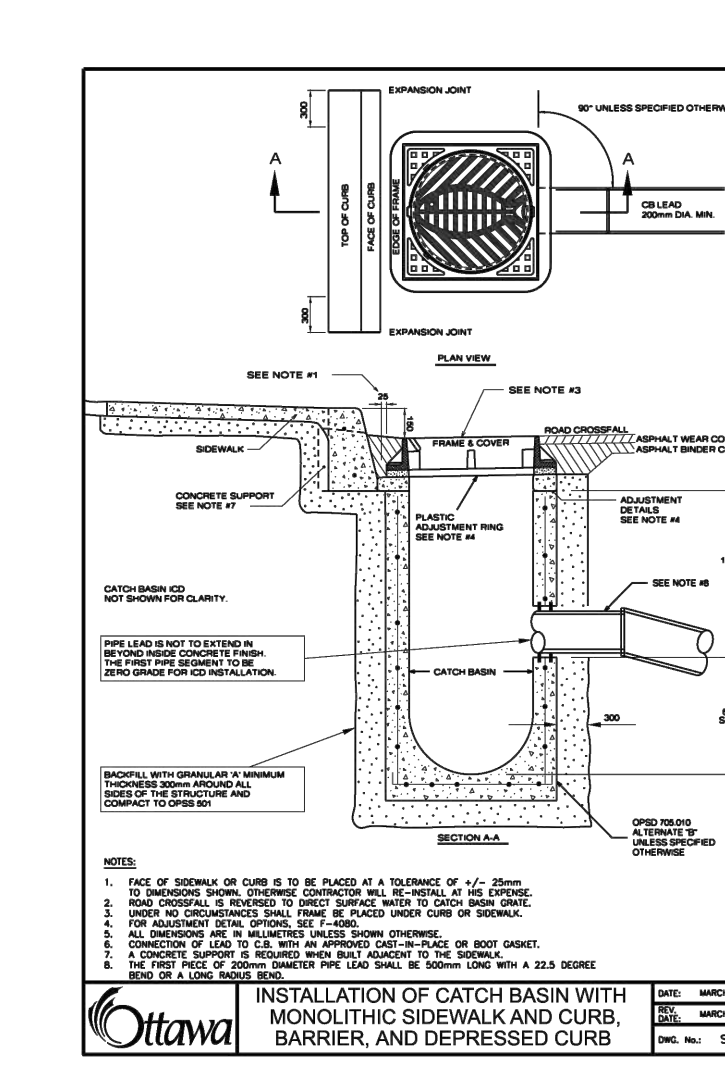
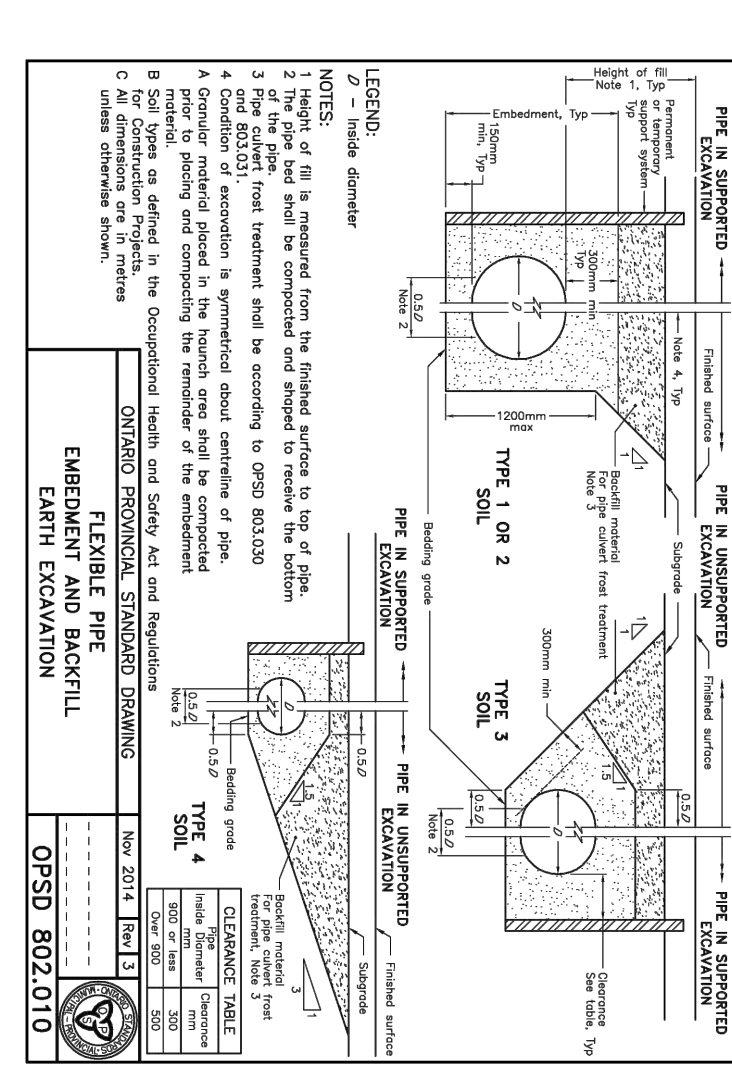
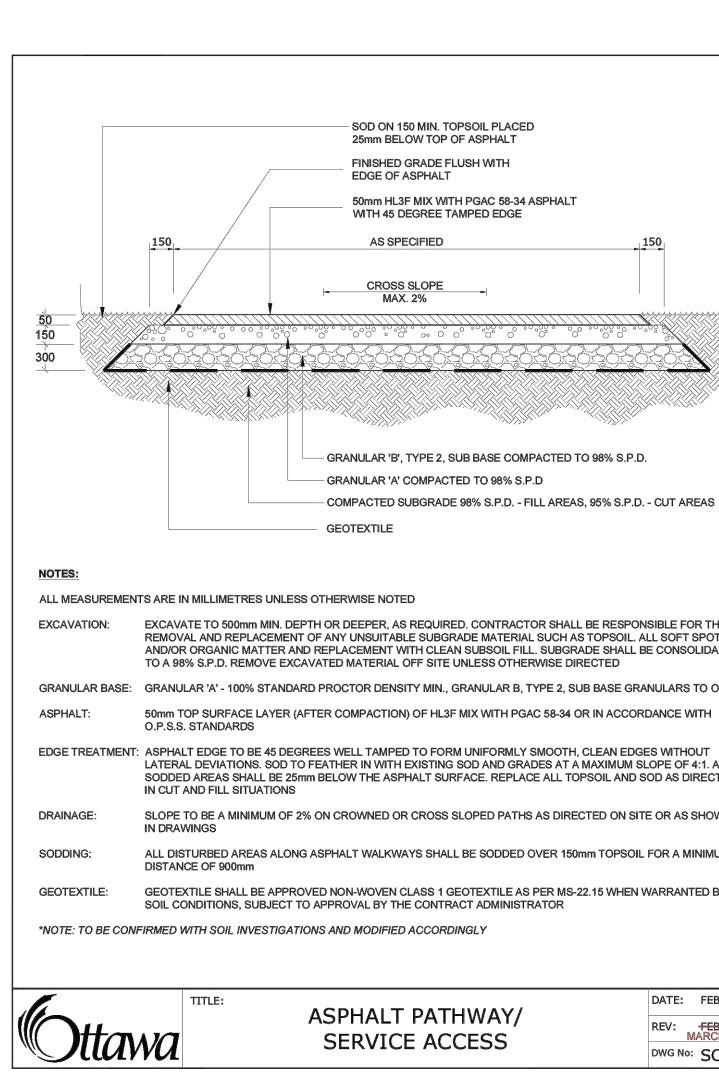
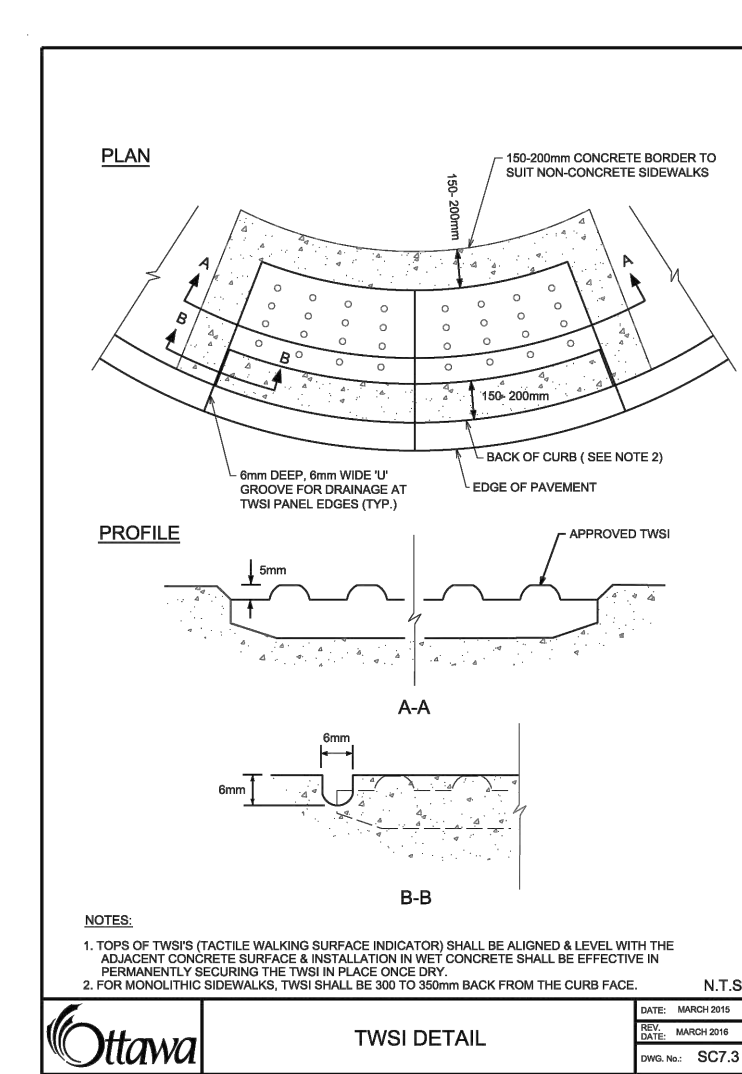
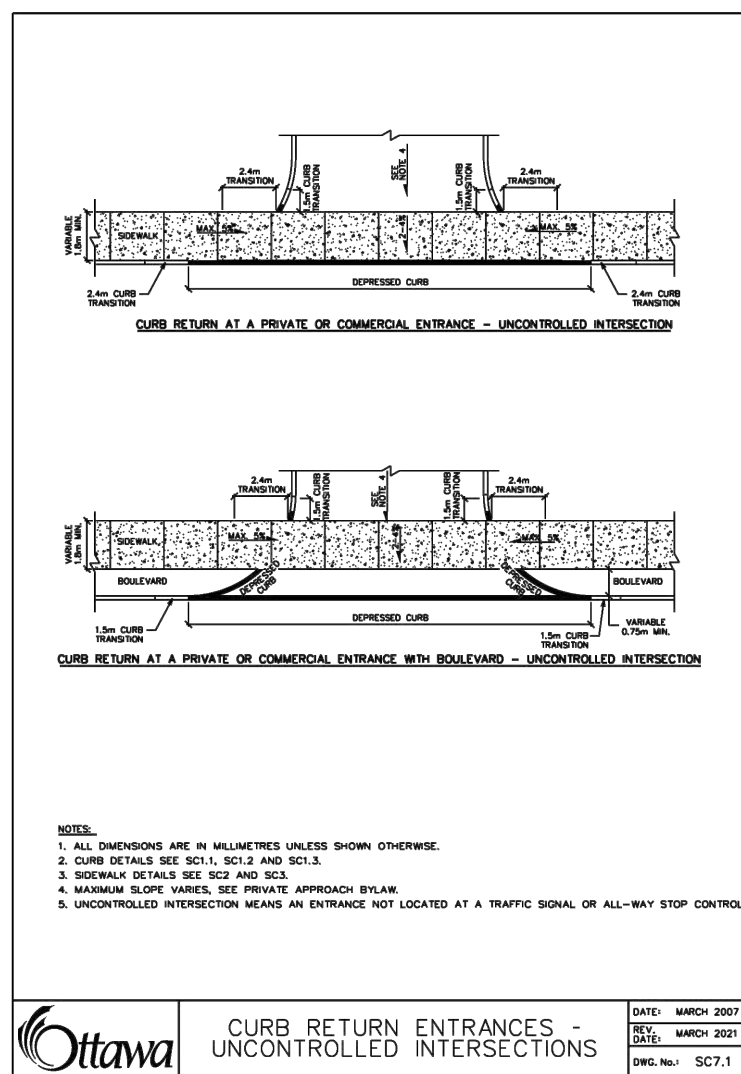
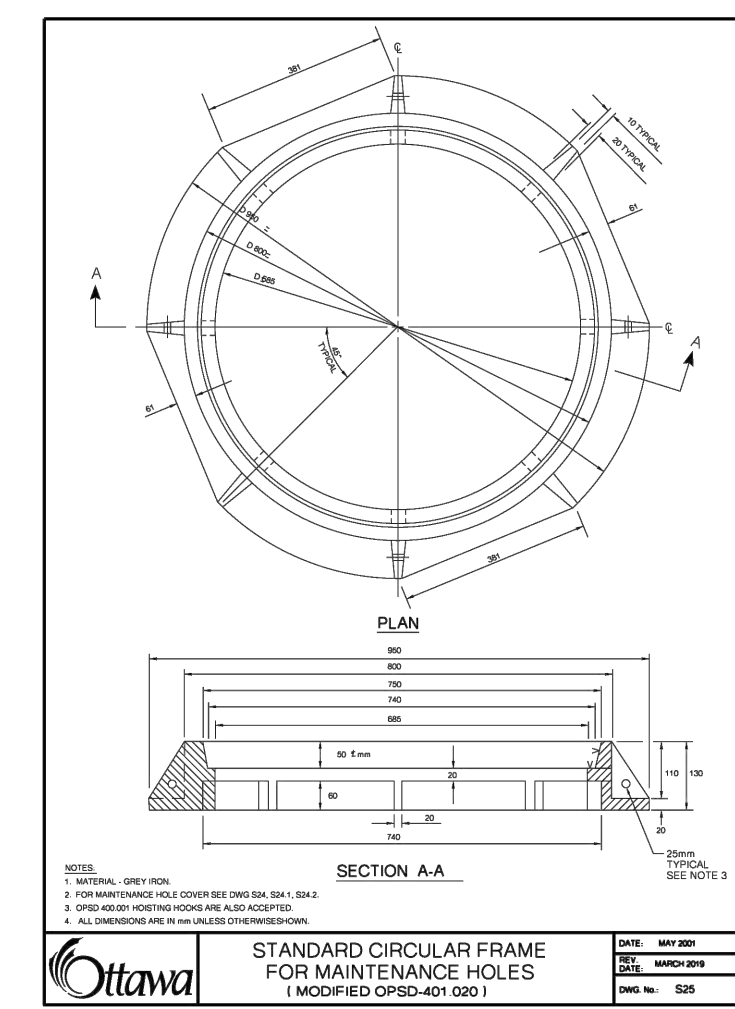
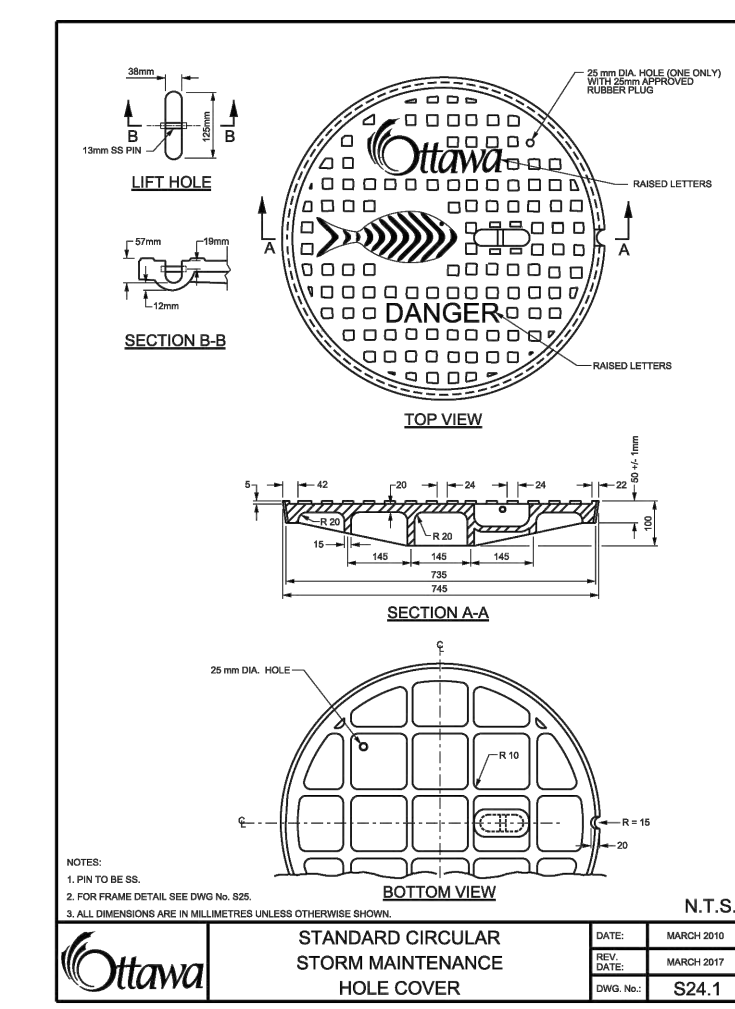
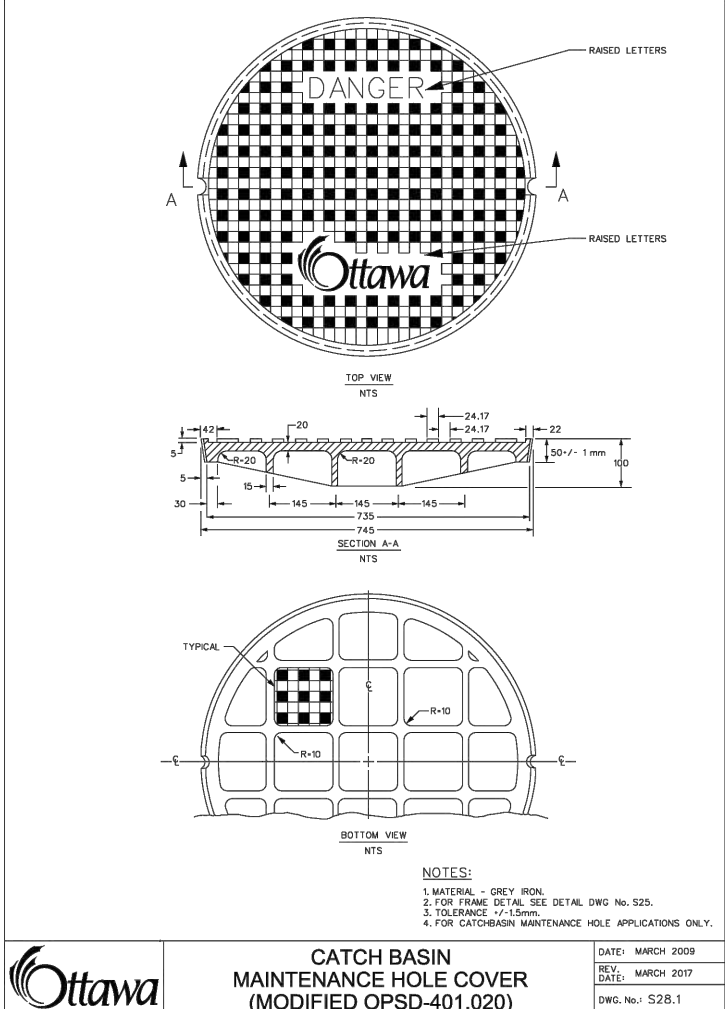
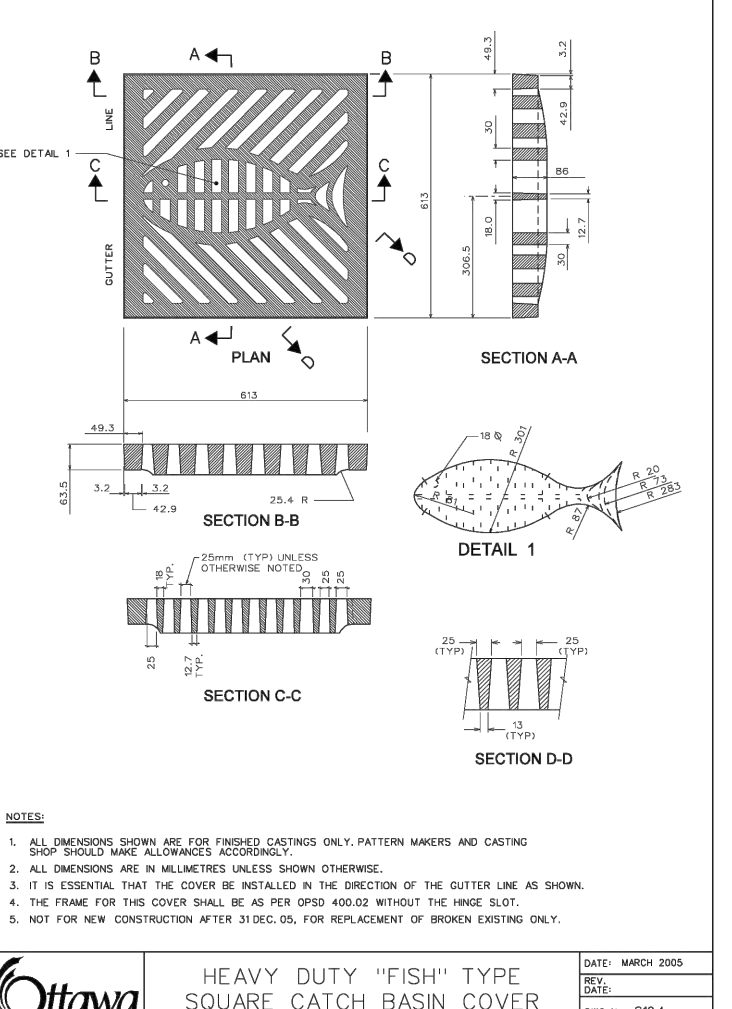
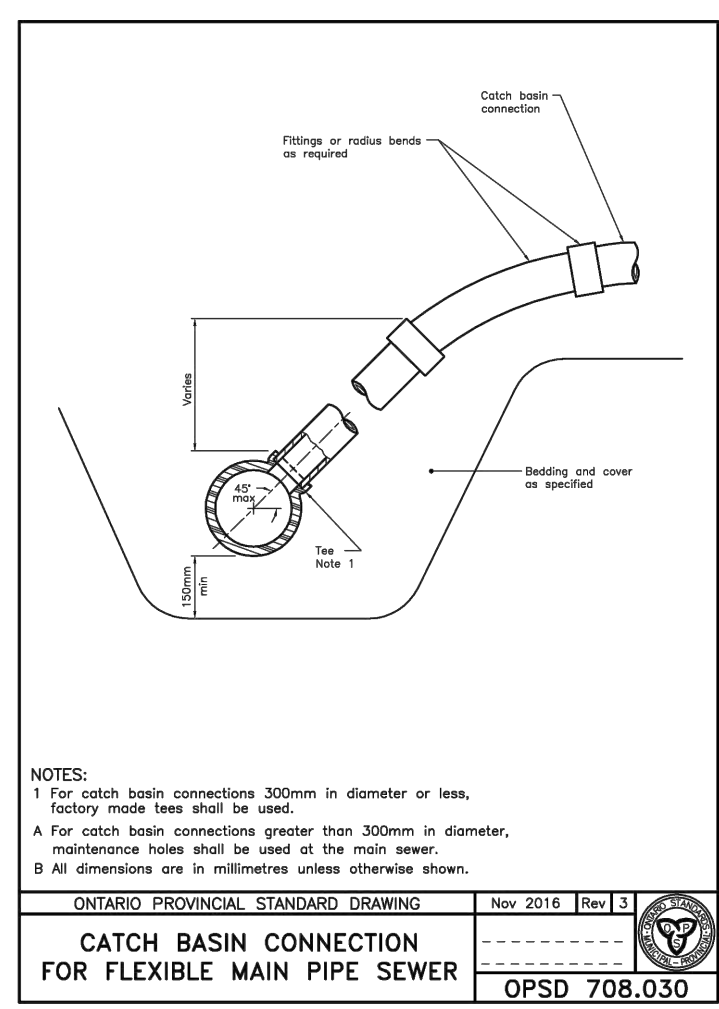
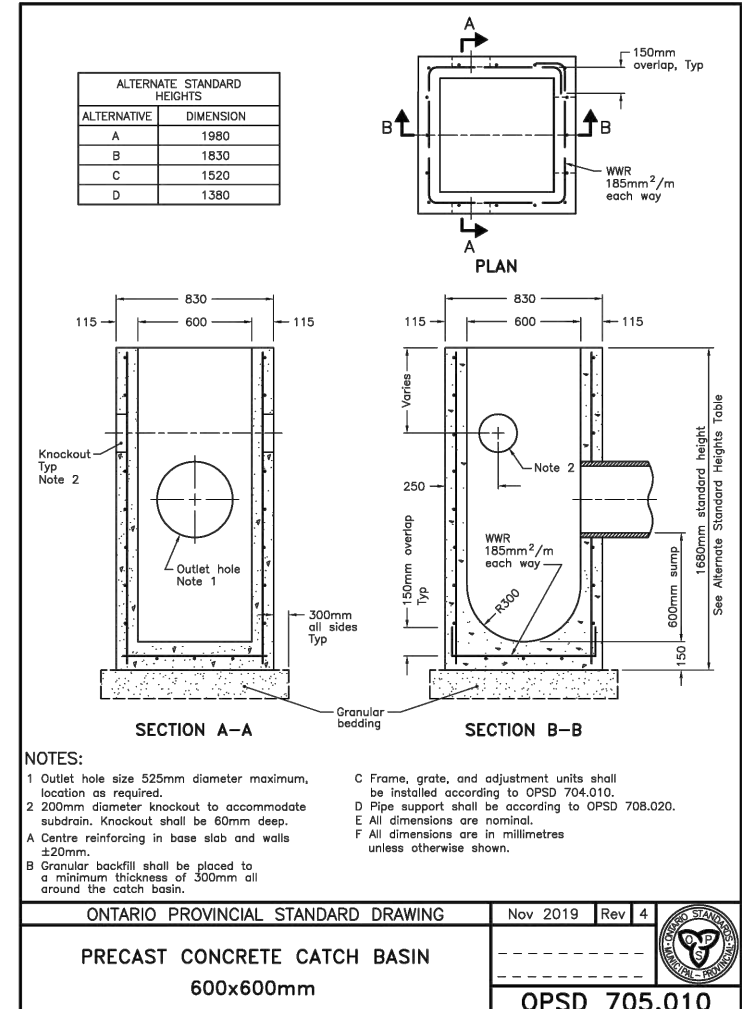
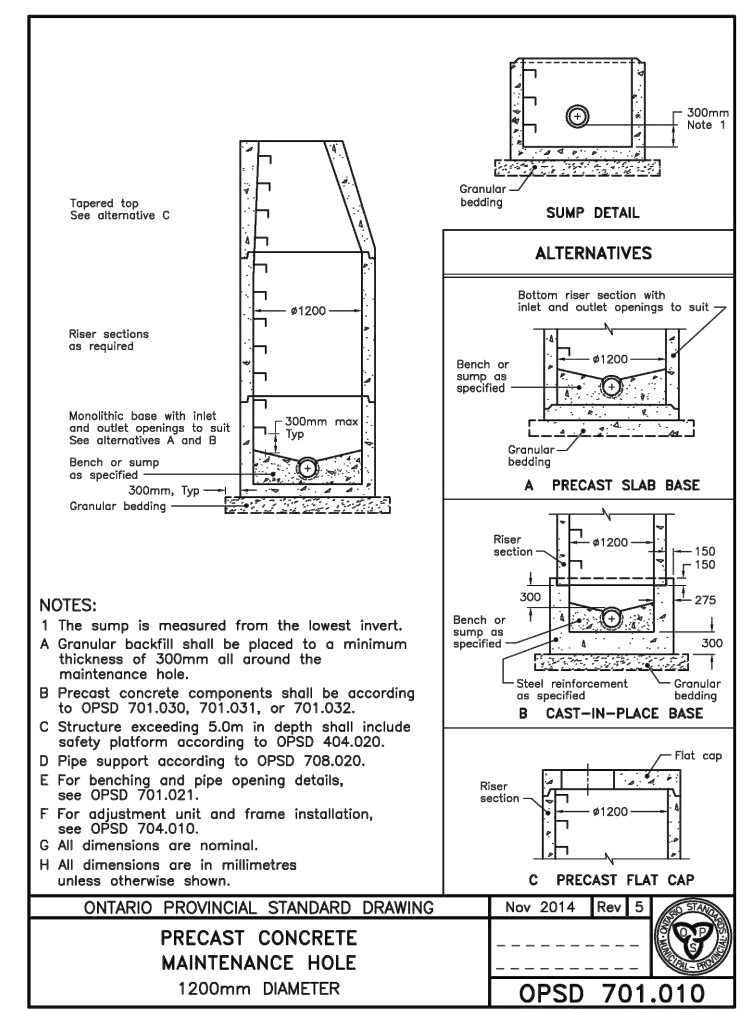
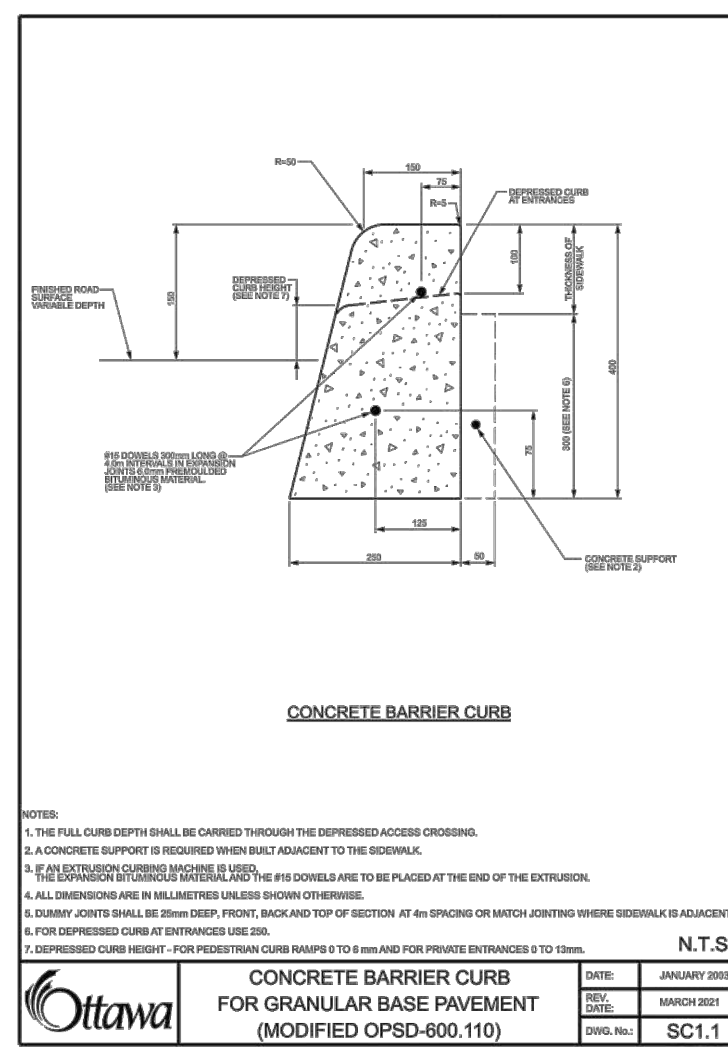
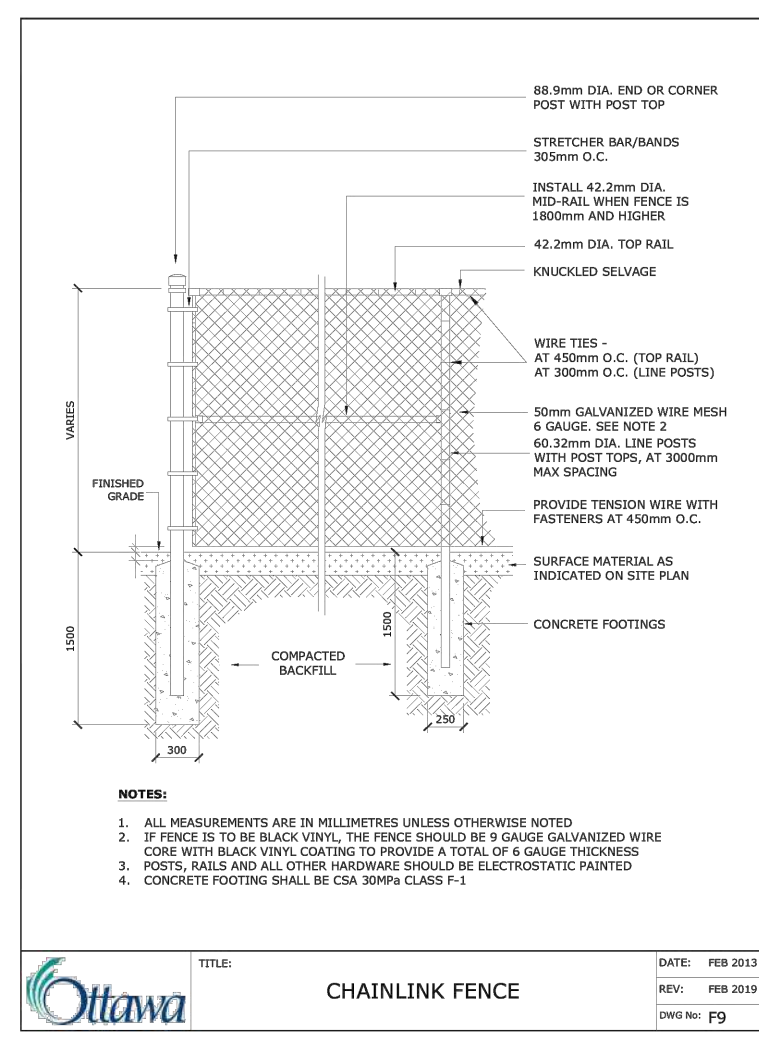
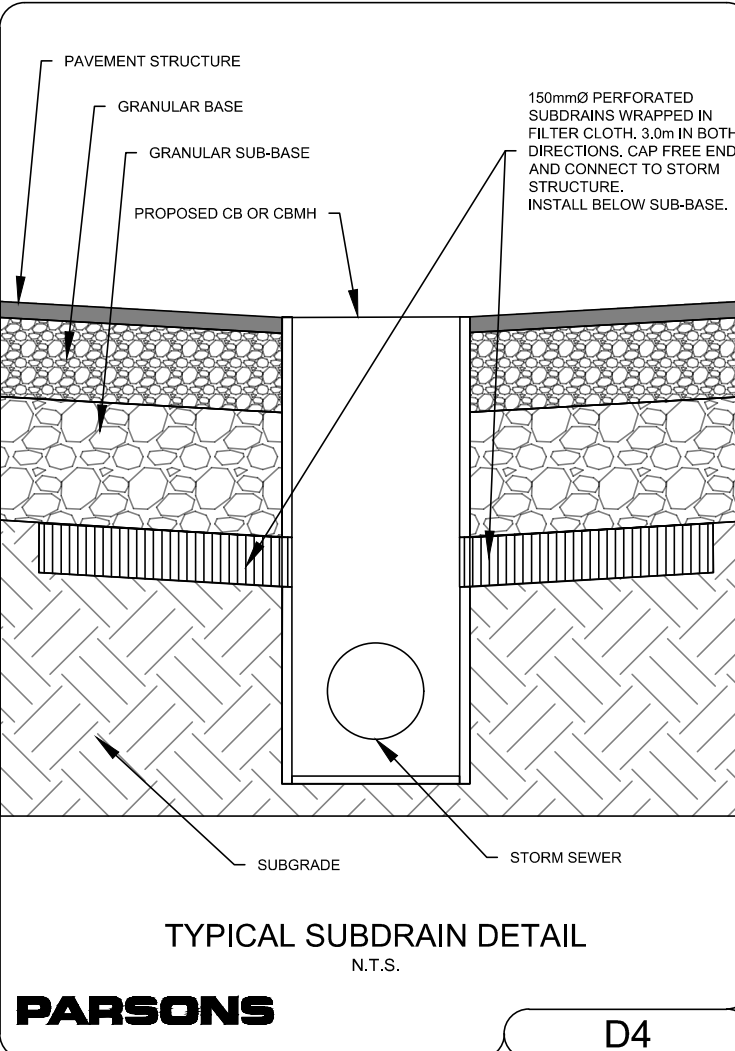
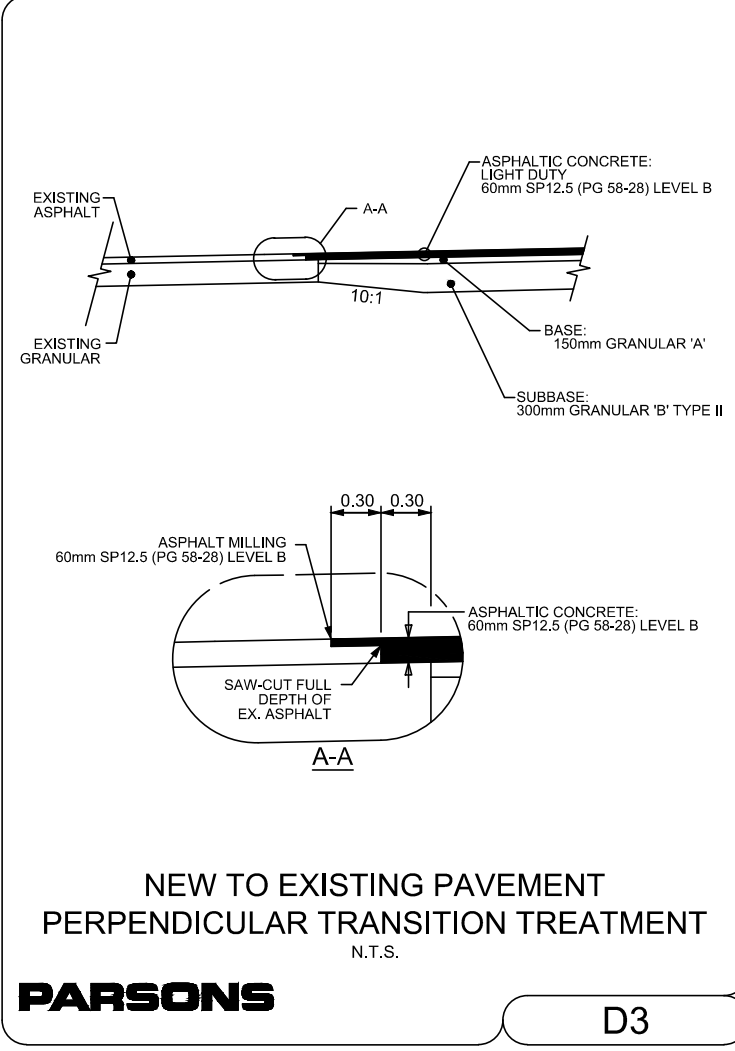
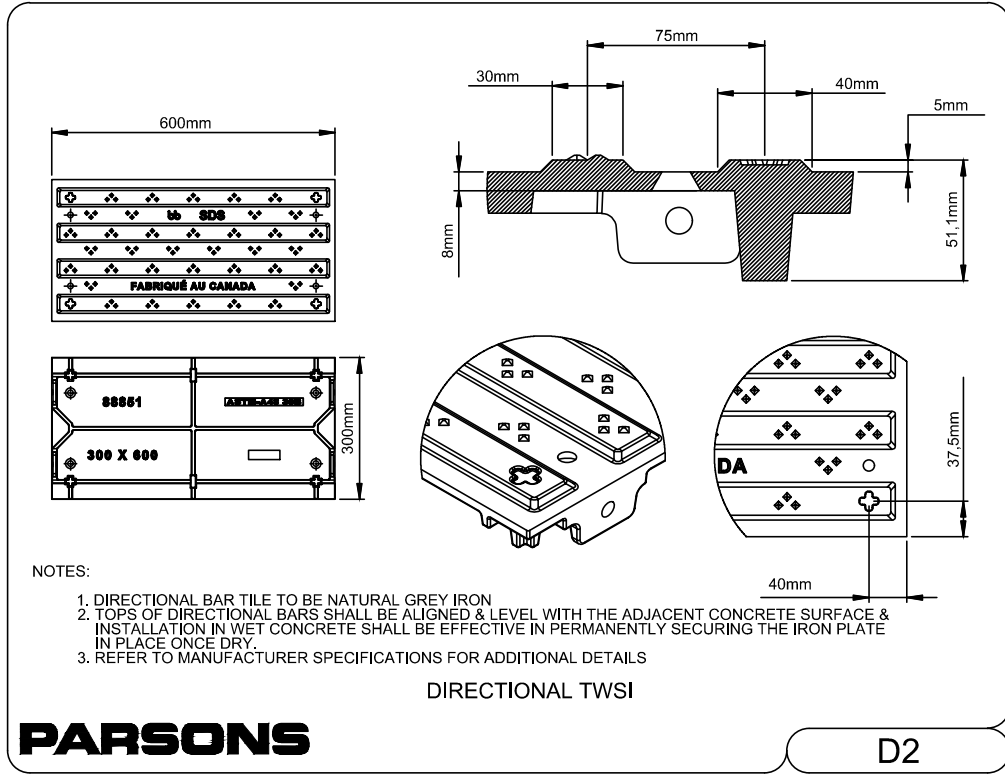
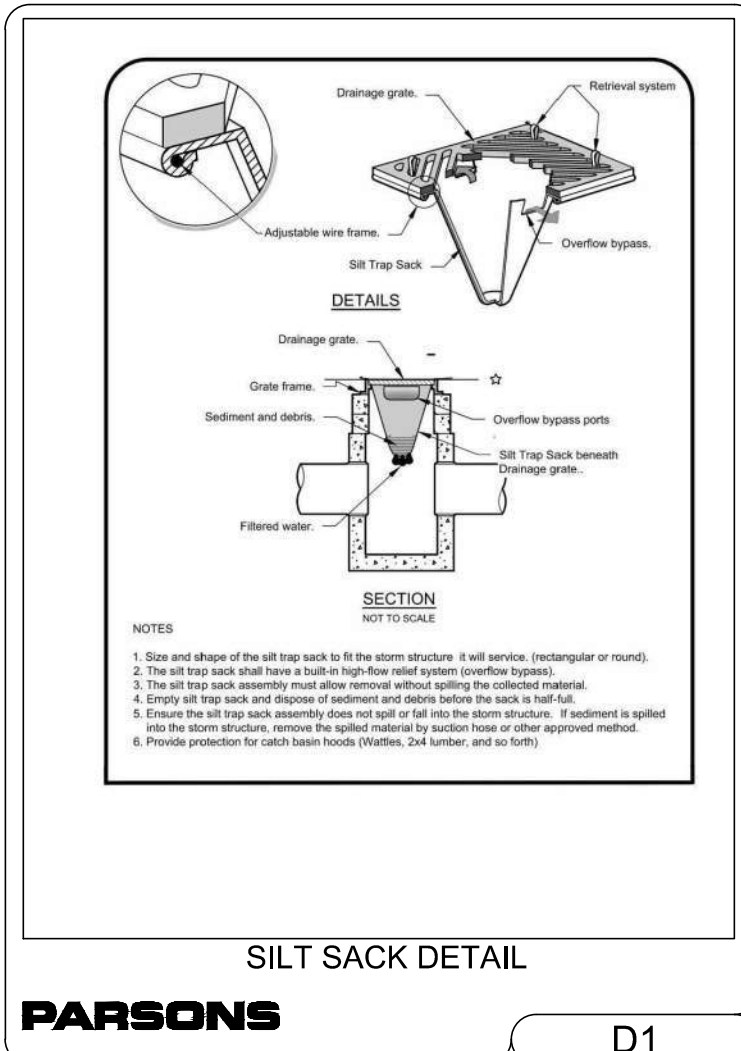
Scale
5m 0 5 10m
SCALE: 1:250

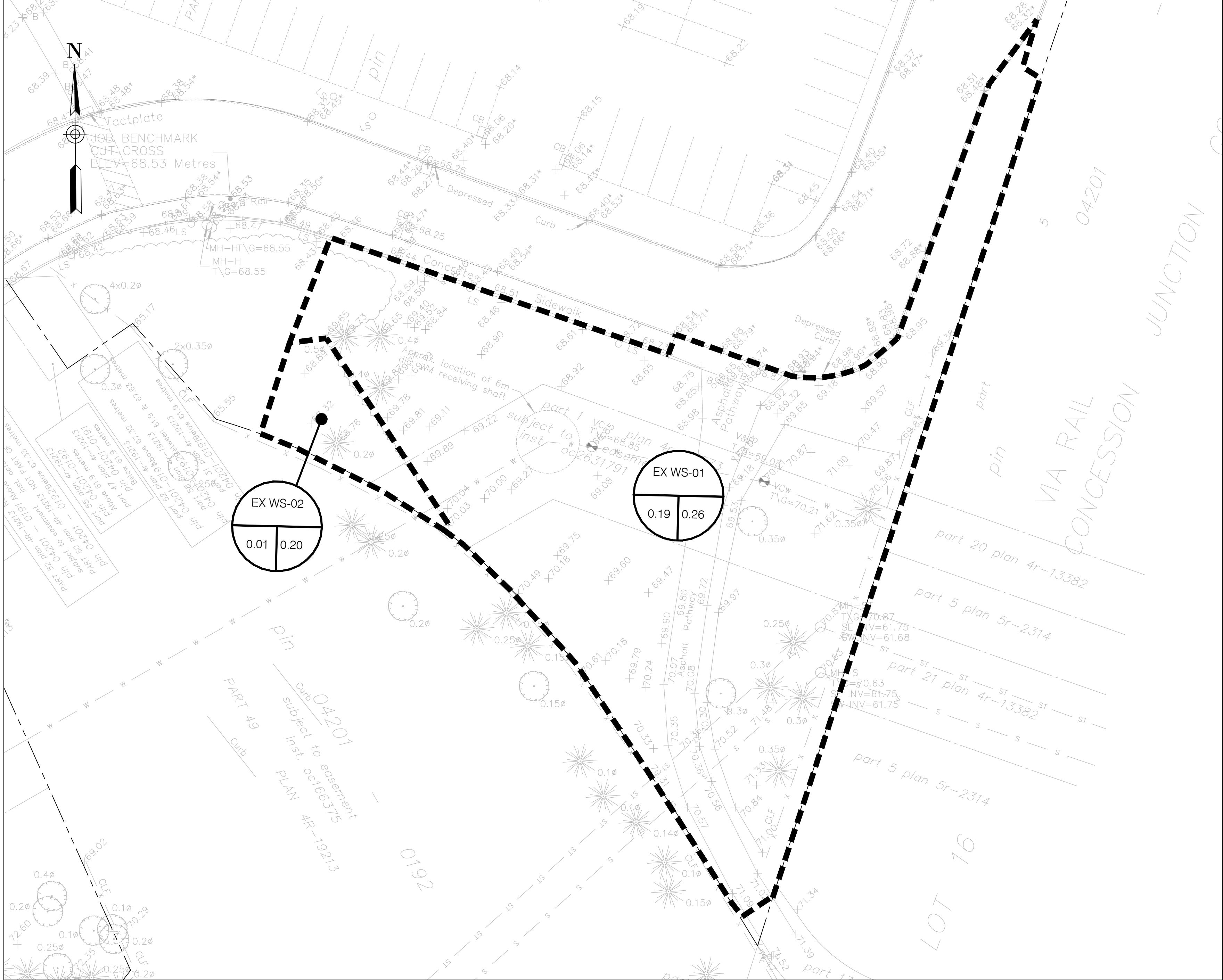
Project Title
1967 RIVERSIDE DRIVE
RIVERSIDE CAMPUS
PARKING LOTS

Drawing Title
PARKING LOT C
SITE SERVICING PLAN

Designed by:	BV	Datum CGVD28
Drawn by:	BV	
Approved by:	MT	
Project No.	479008	Drawing No. C102-C







LEGEND:

--- EXISTING PROPERTY LINE

--- EXISTING WATERSHED BOUNDARY


WS-XX WATERSHED NAME

0.61 0.90 RUNOFF COEFFICIENT

AREA IN HECTARES



Surveyor



ANNIS, O'SULLIVAN, VOLLEBEK LTD.
14 CONOURSE GATE, SUITE 500
NEPEAN, ONTARIO, K2E 7S6

TOPOGRAPHIC INFORMATION & BENCHMARK
SURVEY COMPLETED BY ANNIS, O'SULLIVAN, VOLLEBEK LTD. ON MARCH 21, 2024. ELEVATIONS SHOWN ARE GEODETIC AND ARE REFERRED TO THE CGVD28 GEODETIC DATUM, DERIVED FROM CONTROL MONUMENT NO. 019680274 HAVING AN ELEVATION OF 66.322m.

BOUNDARY INFORMATION WAS COMPILED FROM PLANS 4R-19213, 4R-35573 AND 4R-36051

JOB BENCHMARK
CUT CROSS ON SIDEWALK NEAR OVERPASS
ELEVATION = 68.53m

Client

 **The Ottawa Hospital** | **L'Hôpital d'Ottawa**

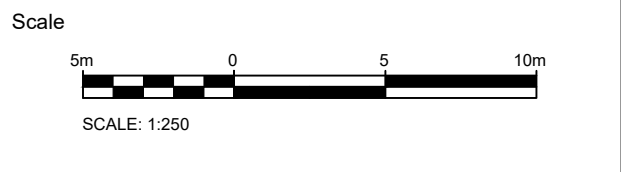
THE OTTAWA HOSPITAL
1053 CARLING AVENUE
OTTAWA, ONTARIO, K1Y 4E9
(613) 722-7000

 **PARSONS**

1223 MICHAEL STREET, SUITE 100
GLOUCESTER, ONTARIO, K1J 7T2



4	RE-ISSUED FOR SPA	BV	2025/05/15
3	RE-ISSUED FOR SPA	BV	2025/03/13
2	RE-ISSUED FOR SPA	BV	2025/01/17
1	ISSUED FOR SPA	BV	2024/11/08
No.	Revision	By	Date (yy/mm/dd)




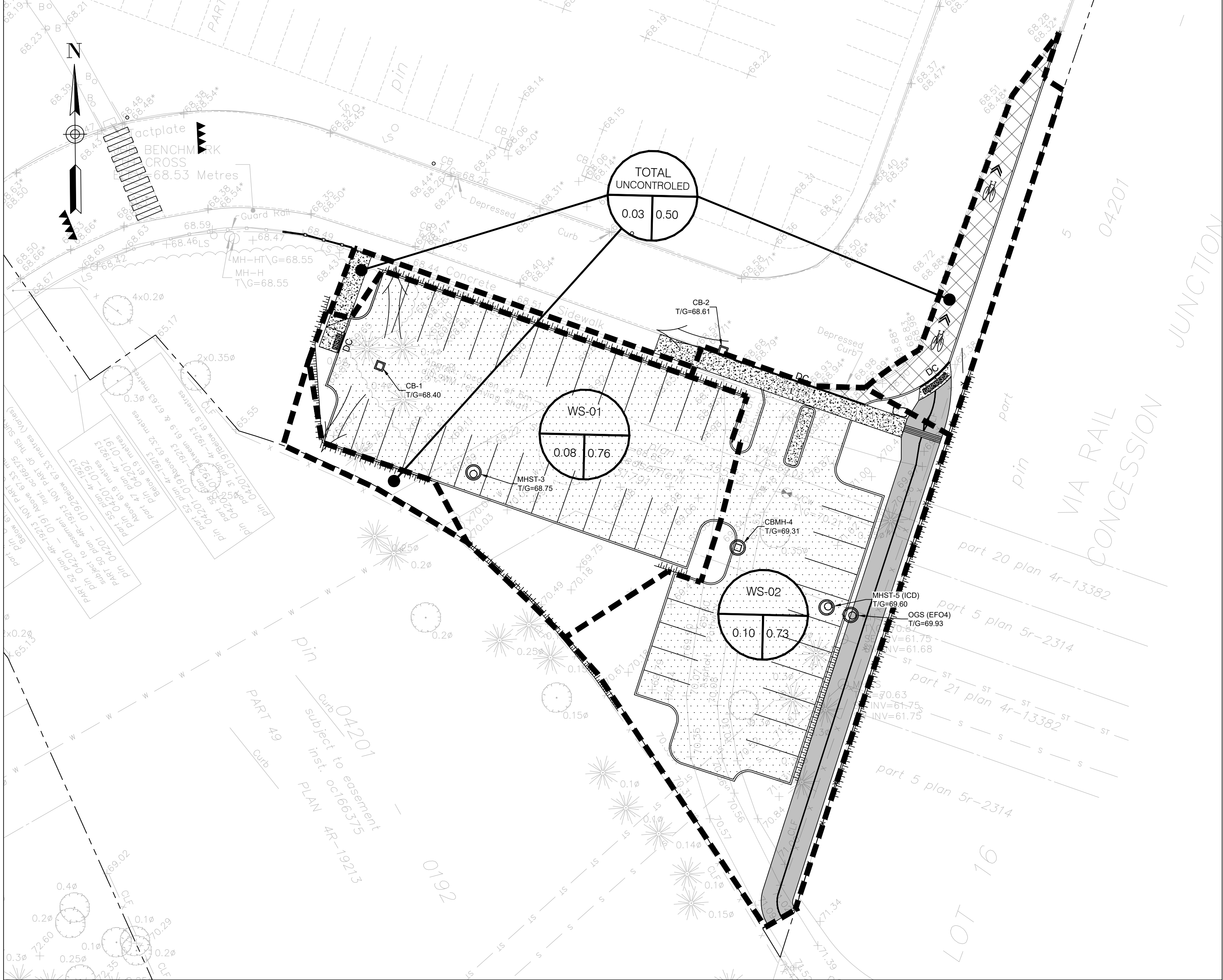
Project Title

**1967 RIVERSIDE DRIVE
RIVERSIDE CAMPUS
PARKING LOTS**

Drawing Title

**PARKING LOT C
PRE DEVELOPMENT
DRAINAGE AREAS**

Designed by:	BV	Datum	
Drawn by:	BV		
Approved by:	MT		
Project No.	479008	Drawing No.	C105-C



LEGEND:

- EXISTING PROPERTY LINE
- WATERSHED BOUNDARY
- WATERSHED NAME
- RUNOFF COEFFICIENT
- AREA IN HECTARES
- EMERGENCY OVERLAND FLOW ROUTE



Surveyor

ANNIS, O'SULLIVAN, VOLLEBEKK LTD.
14 CONOURSE GATE, SUITE 500
NEPEAN, ONTARIO, K2E 7S6

TOPOGRAPHIC INFORMATION & BENCHMARK
SURVEY COMPLETED BY ANNIS, O'SULLIVAN, VOLLEBEKK LTD. ON MARCH 21, 2024. ELEVATIONS SHOWN ARE GEODETIC AND ARE REFERRED TO THE CGVD28 GEODETIC DATUM, DERIVED FROM CONTROL MONUMENT NO. 019880274 HAVING AN ELEVATION OF 66.322m.

BOUNDARY INFORMATION WAS COMPILED FROM PLANS
4R-19213, 4R-35573 AND 4R-36051

JOB BENCHMARK
CUT CROSS ON SIDEWALK NEAR OVERPASS
ELEVATION = 68.53m

Client

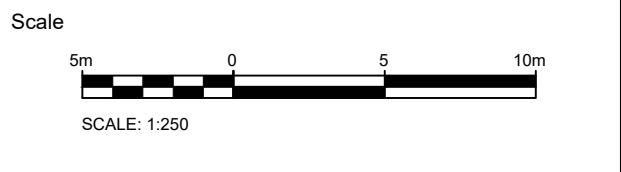
The Ottawa Hospital | L'Hôpital d'Ottawa

THE OTTAWA HOSPITAL
1053 CARLING AVENUE
OTTAWA, ONTARIO, K1Y 4E9
(613) 722-7000

PARSONS
1223 MICHAEL STREET, SUITE 100
GLOUCESTER, ONTARIO, K1J 7T2



4	RE-ISSUED FOR SPA	BV	2025/05/15
3	RE-ISSUED FOR SPA	BV	2025/03/13
2	RE-ISSUED FOR SPA	BV	2025/01/17
1	ISSUED FOR SPA	BV	2024/11/08
No.	Revision	By	Date (yy/mm/dd)



Project Title

**1967 RIVERSIDE DRIVE
RIVERSIDE CAMPUS
PARKING LOTS**

Drawing Title

**PARKING LOT C
POST DEVELOPMENT
DRAINAGE AREAS**

Designed by:	BV	Datum	
Drawn by:	BV		
Approved by:	MT		
Project No.	479008	Drawing No.	C106-C