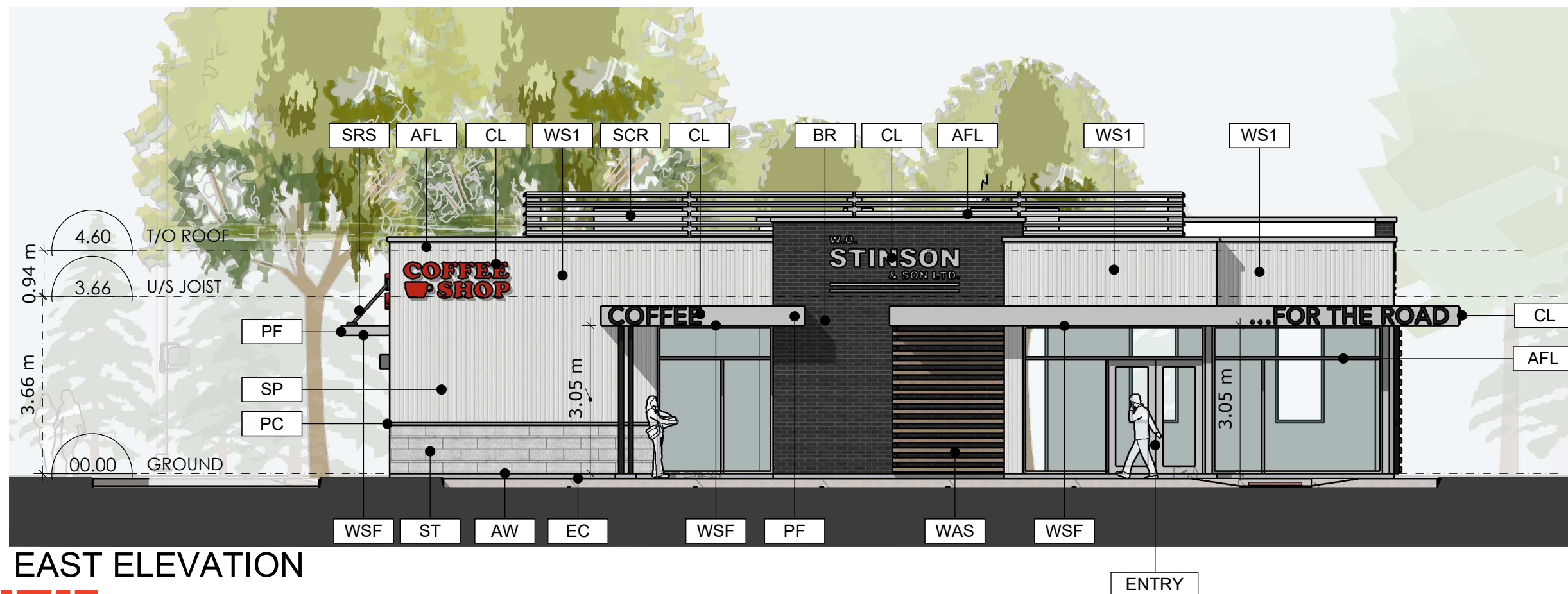


SOUTH ELEVATION

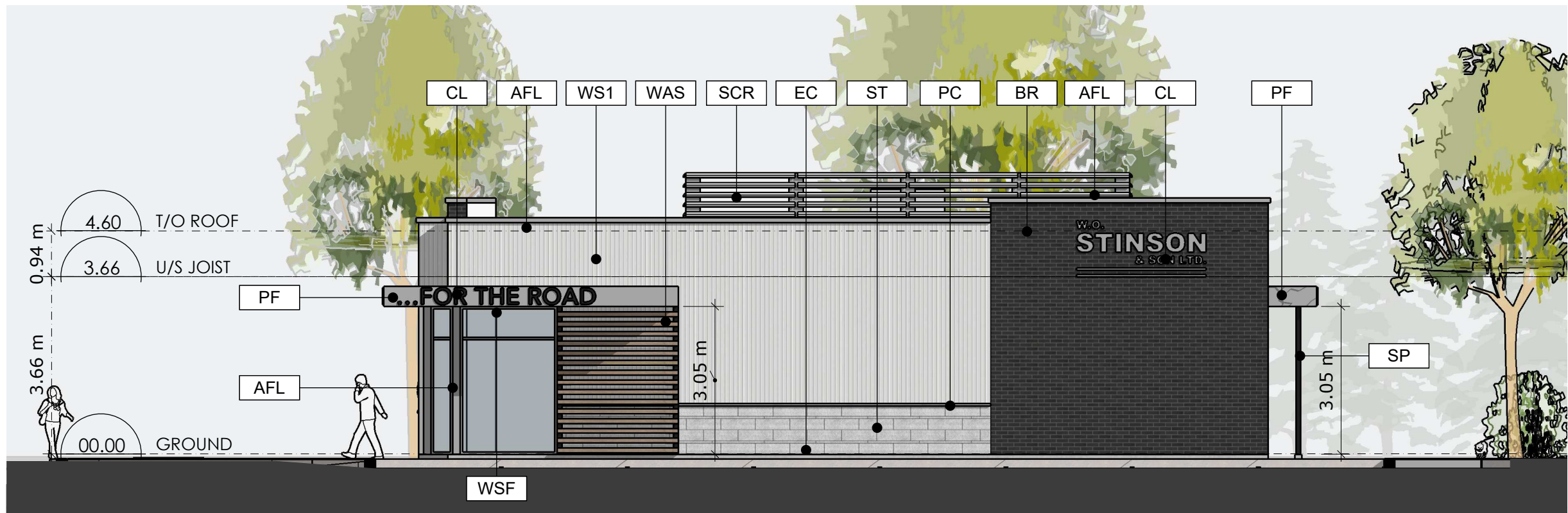


EAST ELEVATION

**MATERIALS KEY**

AFL	PREFIN. ALUM FLASHING
AW	ALUMINUM WINDOWS
BR	BRICK
CL	ILLUM. CHANNEL LETTERS
EC	EXPOSED CONCRETE
PC	PRECAST COPING
PF	PREFINISHED ALUM FASCIA
SCR	MECHANICAL SCREEN
SP	PAINTED STEEL POST
SRS	PAINTED STEEL ROD SUPPORT
ST	MANUFACTURED STONE
WSF	WOOD SOFFIT
WS1	WOOD SIDING 1
WAS	WOOD FINISH ALUM SCREEN





NORTH ELEVATION



WEST ELEVATION

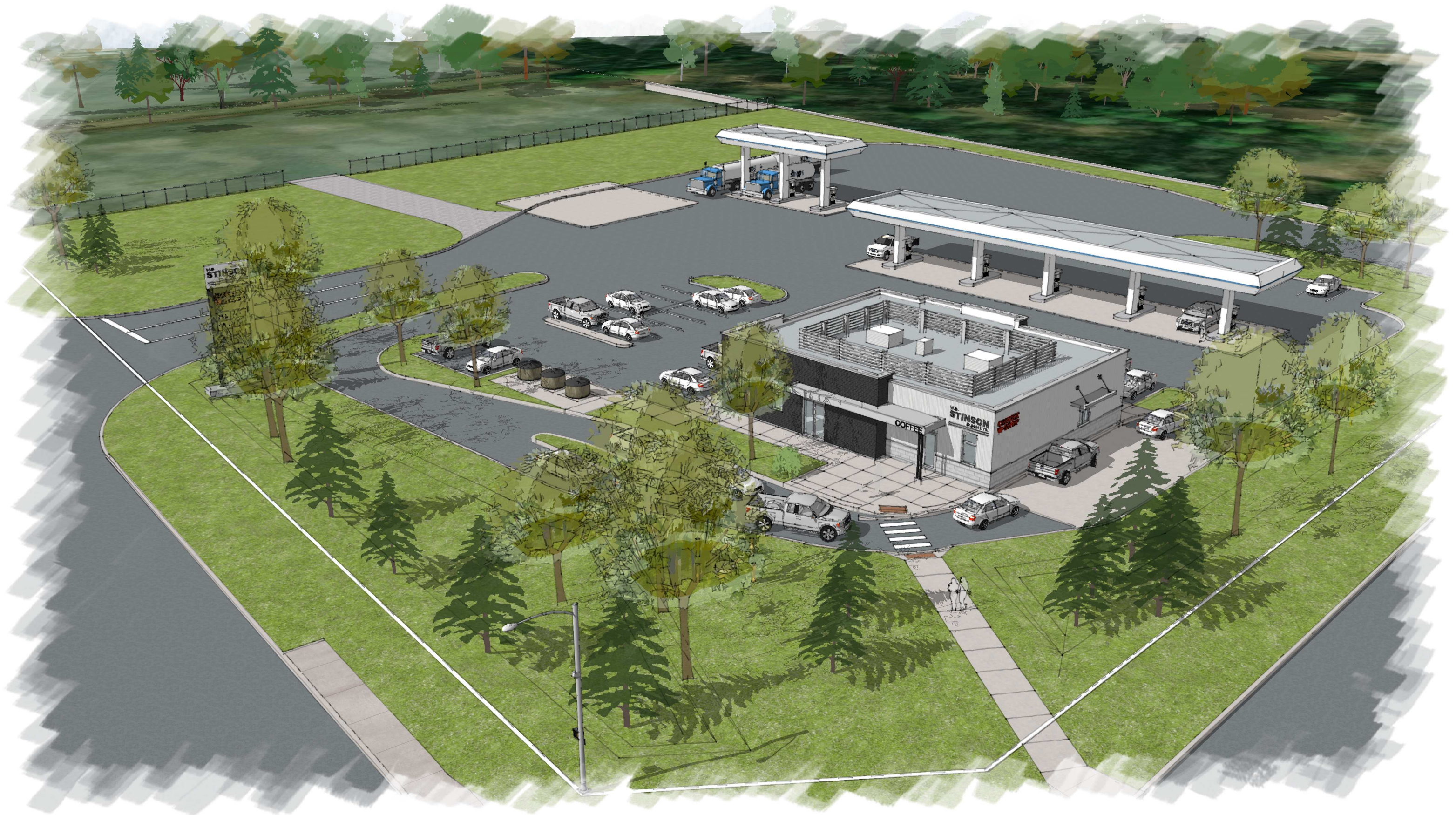
**MATERIALS KEY**

AFL	PREFIN. ALUM FLASHING
AW	ALUMINUM WINDOWS
BR	BRICK
CL	ILLUM. CHANNEL LETTERS
EC	EXPOSED CONCRETE
PC	PRECAST COPING
PF	PREFINISHED ALUM FASCIA
SCR	MECHANICAL SCREEN
SP	PAINTED STEEL POST
SRS	PAINTED STEEL ROD SUPPORT
ST	MANUFACTURED STONE
WSF	WOOD SOFFIT
WS1	WOOD SIDING 1
WAS	WOOD FINISH ALUM SCREEN

SCALE - 1 : 100

25.5.21





HOBIN  
ARCHITECTURE



# **WO STINSON - 5545 ALBION ROAD** **CONCEPT VIEWS - ABOVE SOUTH WEST**





# **WO STINSON - 5545 ALBION ROAD** **CONCEPT VIEWS - FROM ALBION ENTRANCE**









HOBIN  
ARCHITECTURE



**WO STINSON - 5545 ALBION ROAD**

**CONCEPT VIEWS - FROM MITCH OWENS ENTRANCE**

25.5.21





HOBIN  
ARCHITECTURE



# **WO STINSON - 5545 ALBION ROAD** **CONCEPT VIEWS - ABOVE SOUTH EAST**