

SITE PROPERTY LINE

PROPOSED NEW PROPERTY LINE DUE TO  
RIGHT-OF-WAY WIDENING

STRUCTURE TO BE REMOVED

SEWER TO BE REMOVED

LIGHT POST TO BE REMOVED

SILT SACK PER DETAIL D1

PROPOSED SILT FENCE AS PER OPD 219.110

EXISTING CURB REMOVAL

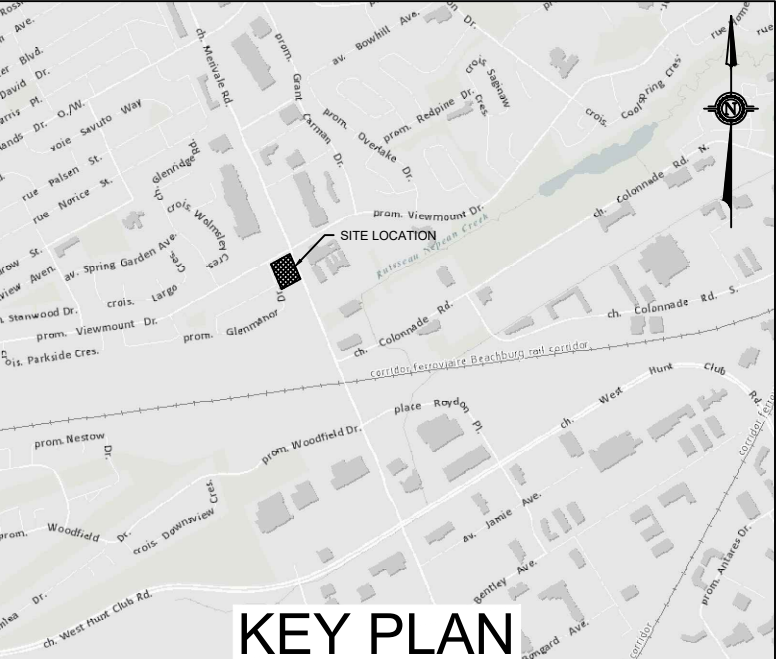
EXISTING FENCE TO BE REMOVED

ASPHALT REMOVAL

LANDSCAPE REMOVAL

CONCRETE REMOVAL

BOREHOLE LOCATION & ELEVATION  
ID# & WATER LEVEL ELEVATION



TOPOGRAPHIC SURVEY COMPLETED BY VRSB ON MARCH 20<sup>th</sup>  
TO 22<sup>nd</sup>, 2023. ELEVATIONS SHOWN ARE GEODETIC AND ARE  
REFERRED TO THE CGVD-28 GEODETIC DATUM.

SITE BENCHMARK No.1 LOCATED ON NORTH WEST  
INTERSECTION OF MERIVALE ROAD. AND VIEWMOUNT DRIVE.  
FIRE HYDRANT TOP OF NUT ELEVATION = 89.19

LEGAL SURVEY COMPLETED BY FARLEY, SMITH & DENIS  
SURVEYING LTD. ON APRIL 21<sup>st</sup>, 2023. BEARINGS ARE  
ASTRONOMIC AND ARE REFERRED TO THE WESTERLY LIMIT  
OF MERIVALE ROAD HAVING A BEARING OF N 22° 18' 30" W  
AS SHOWN ON REGISTERED PLAN 401392.

05	2025-12-18	ISSUED FOR SPA - REV04			M.T.
04	2025-09-05	ISSUED FOR SPA - REV03			M.T.
03	2025-04-01	ISSUED FOR SPA - REV02			M.T.
02	2025-02-19	ISSUED FOR SPA - REV01			M.T.
01	2024-03-21	ISSUED FOR SPA			M.T.
No.	DATE	DESCRIPTION			BY



1223 Michael Street, Suite 100, Ottawa, Ontario, Canada K1J 7T2  
Tel: (613) 738-4160 Fax: (613) 739-7105

CLIENT

HARNOIS ÉNERGIES

PROJECT  
CONVENIENCE STORE/RESTO  
1660 MERIVALE  
NEPEAN, ONTARIO

## EROSION/ SEDIMENT CONTROL & REMOVALS PLAN

DESIGNED BY	P.C.	PROJECT NO. 478684	
DRAWN BY	P.C.	C-101	REM
CHECKED BY			
	M.T.		
DATE	MAY 2025		
SCALE	1:250	DRAWING NO.	DRAWING

EROSION AND SEDIMENT CONTROL MEASURES:

- CONTRACTOR IS RESPONSIBLE FOR ALL INSTALLATION, MONITORING, REPAIR AND REMOVAL OF ALL EROSION AND SEDIMENT CONTROL FEATURES. THE CONTRACTOR SHALL IMPLEMENT BEST MANAGEMENT PRACTICES, TO PREVENT EROSION AND SEDIMENT FROM ENTERING THE SYSTEM AND THE RECEIVING WATERCOURSE, DURING CONSTRUCTION ACTIVITIES. THE CONTRACTOR ACKNOWLEDGES THAT FAILURE TO IMPLEMENT APPROPRIATE EROSION AND SEDIMENT CONTROL MEASURE MAY BE SUBJECT TO PENALTIES IMPOSED BY ANY APPLICABLE REGULATORY AGENCY.
- SEDIMENT AND EROSION CONTROL PLAN OBJECTIVES:
- PREVENT SOIL EROSION
  - PREVENT SOIL EROSION. THIS CAN RESULT FROM STREAMING RAIN WATER OR WIND EROSION DURING CONSTRUCTION.
  - PREVENT SEDIMENT DEPOSITS IN THE SEWER PIPES AND NEARBY COLLECTING STREAMS (AS APPLICABLE).
  - PREVENT AIR POLLUTION FROM PARTICULATE MATTER AND DUST.

1. PRIOR TO START OF CONSTRUCTION:

PRIOR TO THE REMOVAL OF ANY VEGETATIVE COVER, MOVING OF SOIL AND CONSTRUCTION:

- INSTALL SLT FENCE (AS PER OPSD 219.110) ALONG DITCHES IMMEDIATELY DOWNSTREAM FROM AREAS TO BE DISTURBED (SEE PLAN FOR LOCATION).
- INSTALL FILTER CLOTH ON DOWNSTREAM MANHOLE COVERS.
- INSTALL SLT SACK FILTERS IN ALL CONCRETE CATCH BASINS STRUCTURES.
- INSPECT MEASURES IMMEDIATELY AFTER INSTALLATION.
- THE CONTRACTOR MUST SET UP THE MEASURES INDICATED ON THE PLAN, INSPECT THEM FREQUENTLY AND CLEAN AND REPAIR OR REPLACE THE DETERIORATED STRUCTURES AT THE END OF THE CONSTRUCTION PERIOD. THE CONTRACTOR IS RESPONSIBLE FOR REMOVAL OF THE TEMPORARY STRUCTURES AND RECONDITIONING THE AFFECTED AREAS

## 2. DURING CONSTRUCTION:

- SEDIMENT AND EROSION CONTROL MEASURES TO BE CONSTRUCTED AS PER OPSS 805.
- WHEN SEDIMENT AND EROSION CONTROL MEASURES MUST BE REMOVED TO COMPLETE A PORTION OF THE WORK, THE SAME MEASURES MUST BE REINSTATEMENT UPON THE WORK'S COMPLETION.
- WORK TO BE DONE IN THE VICINITY OF MAJOR WATERWAYS TO BE CARRIED OUT FROM JULY AND SEPTEMBER ONLY.
- MINIMIZE THE EXTENT OF DISTURBED AREAS AND THE DURATION OF EXPOSURE.
- PROTECT DISTURBED AREAS FROM RUMPLE.
- PROVIDE TEMPORARY COVER SUCH AS SEEDING OR MULCHING IF DISTURBED AREA WILL NOT BE REHABILITATED SHORTLY.

- INSPECT STRAW BALE FLOW CHECK DAMS, SILT FENCES, SILT SACKS, AND CATCH BASIN SUMPS REGULARLY AND AFTER EVERY MAJOR STORM EVENT. CLEAN AND REPAIR WHEN NECESSARY.
- REVIEW AND REVISED AS REQUIRED.
- EROSION CONTROL FENCING TO BE ALSO INSTALLED AROUND THE BASE OF ALL STOCKPILES.
- DO NOT LOCATE TOPSOIL PILES AND EXCAVATION MATERIAL CLOSER THAN 2.5m FROM ANY PAVED SURFACE. IF THERE IS A RISK OF EROSION, THE TOPSOIL PILES MUST BE SEEDED IF THERE IS A RISK OF EROSION TO BE REMAIN ON SITE LONG ENOUGH FOR SEEDS TO GROW (LONGER THAN 30 DAYS), WHEN STORING SOIL ON SITE IN PILES THE CONTRACTOR MUST COVER EACH PILE WITH TARPS, STRAW OR A GEOTEXTILE FABRIC TO PREVENT EROSION. PARTICULARLY IN AREAS WHERE THERE IS A RISK OF EROSION.
- CONTROL WIND-BLOWN DUST OFF SITE TO ACCEPTABLE LEVELS BY SEEDING TOPSOIL PILES AND OTHER AREAS TEMPORARILY (PROVIDE WATERING AS REQUIRED). FOR DUST CONTROL, CONTRACTOR TO APPLY CALCIUM CHLORIDE AT RATE OF 1 - 1.5 OUNCE PER SQUARE YARD.
- CONTRACTOR TO MAINTAIN ACCESS TO ALL ADJACENT PROPERTIES AT ALL TIMES. OWNER'S REPRESENTATIVE AT RATE IN ACCORDANCE TO OPSS 506 WHEN DIRECTED BY OWNER'S REPRESENTATIVE.
- ALL EROSION CONTROL STRUCTURE TO REMAIN IN PLACE UNTIL ALL DISTURBED GROUND SURFACES HAVE BEEN RECLAIMED EITHER BY THE CONTRACTOR OR BY THE CITY OF OTTAWA.
- ALL EROSION CONTROL STRUCTURES TO BE MAINTAINED AND CLEANED. NOT REMOVED UNTIL ALL LANDSCAPING AREAS ARE COMPLETED.
- NO ALTERNATE METHODS OF EROSION PROTECTION SHALL BE PERMITTED UNLESS APPROVES BY THIS CONSULTING ENGINEER AND THE CITY OF OTTAWA DEPARTMENT OF PUBLIC WORKS.
- CONTRACTOR TO RESPOND TO ALL REQUESTS FOR REMOVAL OF EXCESSIVE AMOUNTS OF DUST AND OF SEDIMENT FROM VEHICULAR TRUCKING ETC. AT THE END OF EACH WORK DAY.
- DURING WET CONDITIONS, TIRES OF ALL VEHICLES/EQUIPMENT LEAVING THE SITE ARE TO BE SCRAPPED.
- ANY MATERIAL TRACKED ONTO THE ROAD SHALL BE REMOVED IMMEDIATELY BY HAND OR RUBBER TIRE LOADER.
- TAKE ALL NECESSARY STEPS TO PREVENT BUILDING MATERIAL, CONSTRUCTION DEBRIS OR WASTE BEING TRACKED ONTO THE ROAD. CONTRACTOR TO MAINTAIN CLEAR DRIVE LANE DURING CONSTRUCTION AND PROCEED IMMEDIATELY TO CLEAN UP ANY AREAS SO AFFECTED.
- PROVIDE GRAVEL ENTRANCE WHEREVER EQUIPMENT LEAVES THE SITE TO PROVIDE MUD TRACKING ONTO PAVED SURFACES. GRAVEL ENTRANCE SHALL BE 10m LONG, 1.5m WIDE AND 0.15m DEEP AND SHALL CONSIST OF COARSE MATERIAL. MAINTAIN GRAVEL ENTRANCE IN CLEAN CONDITION.

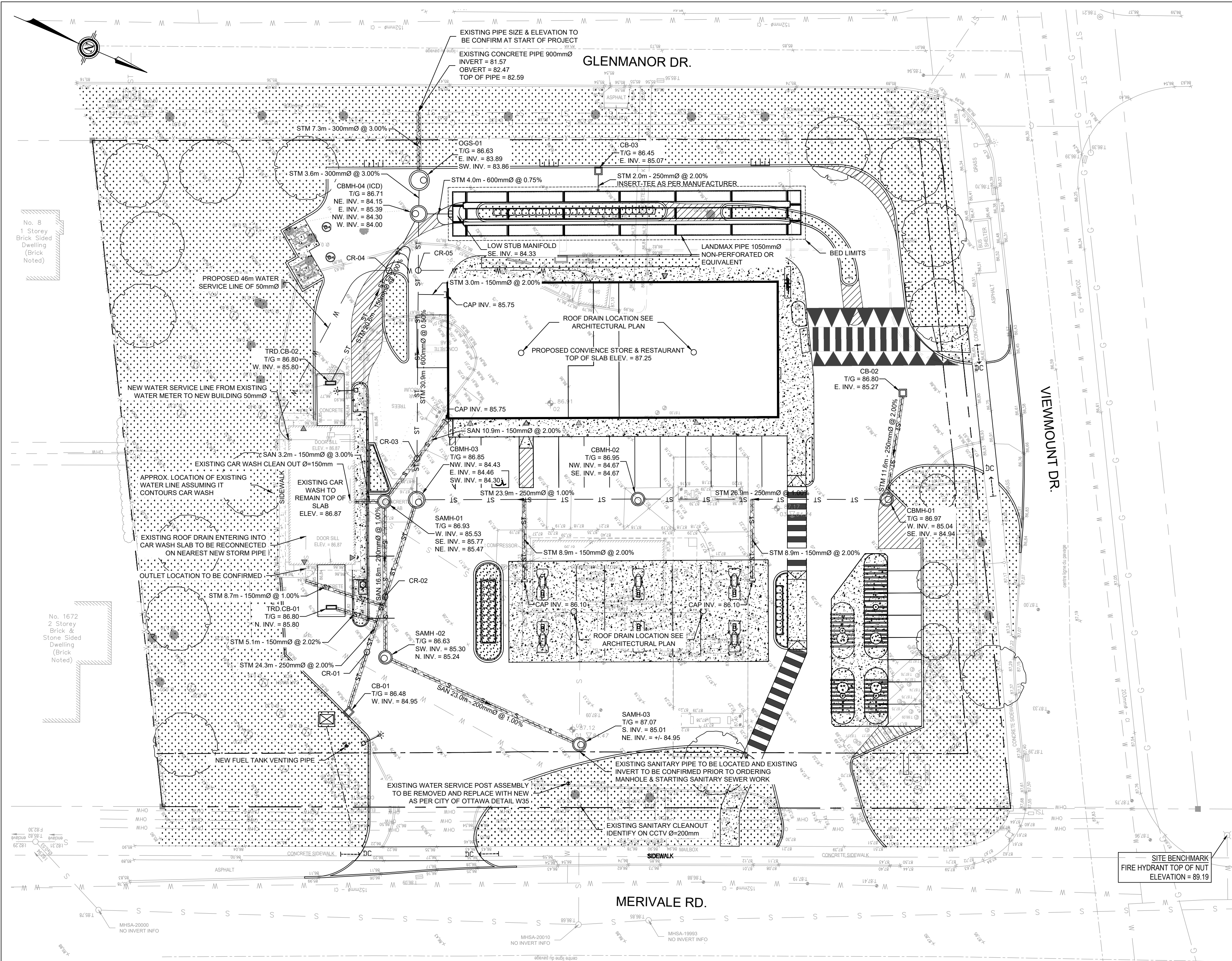
### 3. AFTER CONSTRUCTION:

- PROVIDE PERMANENT COVER CONSISTING OF TOPSOIL AND SEED TO DISTURBED AREAS.
- ALL SEDIMENT AND EROSION CONTROL MEASURES TO BE REMOVED BY THE CONTRACTOR FOLLOWING THE COMPLETION OF WORK AND AFTER DISTURBED AREAS HAVE BEEN REHABILITATED AND STABILIZED, THIS INCLUDES REMOVE STRAW BALE FLOW CHECK DAMS, SILT FENCES AND FILTER CLOTHS ON CATCH BASINS AND MANHOLE COVERS.
- INSPECT AND CLEAN CATCH BASIN SUMPS AND STORM SEWERS.

NOTES: REMOVALS AND DEMOLITION

1. PRE-REMOVE. THE CONTRACTOR MUST VISIT THE PREMISES IN ORDER TO BE FULLY AWARE OF EXISTING CONDITIONS ON SITE, INCLUDING ALL ELEMENTS TO BE REMOVED AND DEMOLISHED. NO CLAIM WILL BE ACCEPTED DUE TO A POOR EVALUATION OF THE WORK TO BE COMPLETED.
2. THE CONTRACTOR SHALL BE RESPONSIBLE FOR OBTAINING ALL NECESSARY PERMITS AND REQUEST FOR INTERRUPTION OF PUBLIC UTILITY SERVICES, SUCH AS GAS, TELEPHONE, POWER, CABLE, SEWERS, WATERMAIN, ETC, BEFORE PROCEEDING WITH WORK, COORDINATE WITH ALL APPLICABLE UTILITY COMPANIES.
3. THE CONTRACTORS TO BE REMOVED AND BAGGED AND/OR PROTECTED AS INDICATED ON DRAWING.
4. CURB, ASPHALT, SIDEWALK, AND GRANULAR BASE TO BE EXCAVATED WITHIN LIMITS OF DEMOLITION REMOVAL. THE CONTRACTOR MUST CARRY OUT NECESSARY SAW CUTS.
5. SEWER / WATERMAIN PIPES TO BE ABANDONED MUST BE CUT, FILL WITH UNSHINKABLE CONCRETE CONFORMING TO CIPS 1559, AND CAPPED.
6. REMOVE AND DISPOSE SEWERS AS INDICATED. PLUG ANY SERVICE LATERALS TO BE ABANDONED.
7. THE CONTRACTOR MUST ENTIRELY REMOVE THE DEMOLITION WRECKAGE FROM THE CONSTRUCTION SITE IN ACCORDANCE WITH THE REQUIREMENTS OF THE MINISTRY OF ENVIRONMENT CONSERVATION AND PARKS (MECP).
8. THE CONTRACTOR MUST DISCARD RECYCLABLE DEMOLITION MATERIALS IN COLLABORATION WITH A REGIONAL RECYCLING COMPANY.
9. ALL OTHER DEMOLITION MATERIALS MUST BE DISPOSED OFF-SITE AT AUTHORIZED LICENSED LANDFILLS AND IN CONFORMITY WITH THE APPLICABLE LAWS AND REGULATIONS. THE CONTRACTOR MUST BE ABLE TO PROVIDE, UPON REQUEST, COPIES OF THE DISPOSAL TICKETS TO THE OWNER'S REPRESENTATIVE.
10. SURVEYS AND WORKS TO BE COMPLETED PRIOR TO THE DEMOLITION WORK MUST BE REINSTATED AS THEY WERE BEFORE BEGINNING OF WORK. CONTRACTOR IS RESPONSIBLE TO MAKE GOOD ON ANY DAMAGES TO EXISTING CURBS AND ASPHALT NOT SCHEDULED FOR REMOVAL.
11. ALL MATERIALS, PRODUCTS AND OTHERS COMING FROM THE DEMOLITION BELONG TO THE CONTRACTOR, UNLESS SPECIFIED OTHERWISE.
12. THE CONTRACTOR MUST COMPLETE ALL REMOVALS AS SHOWN ON THE DRAWINGS AND AS REQUIRED TO MAKE THE WORK COMPLETE.
13. THE CONTRACTOR MUST PROTECT AND MAINTAIN IN SERVICE THE EXISTING WORKS WHICH MUST REMAIN IN PLACE. IF THEY ARE DAMAGED, THE CONTRACTOR MUST IMMEDIATELY MAKE THE REPLACEMENTS AND NECESSARY REPAIRS TO THE SATISFACTION OF THE OWNER'S REPRESENTATIVE AND WITHOUT ADDITIONAL EXPENSE TO THE OWNER.
14. THE CONTRACTOR SHALL NOT PERFORM ANY TREE CUTTING DURING THE CORE MIGRATORY BIRDS NESTING PERIOD, WHICH IS APRIL 15 TO AUGUST 15.





#### NOTES: SEWER

- ALL CATCH BASIN, TRENCH DRAIN, MAINTENANCE HOLE COVERS AND OTHER STORM SEWER CONNECTION SHALL BE EQUIPPED WITH NITRILE RUBBER GASKET.
- CONTRACTOR TO CONFIRM ELEVATION OF EXISTING STORM AND SANITARY SEWERS AT PROPOSED CONNECTION POINTS AND REPORT ANY DISCREPANCIES TO THE ENGINEER BEFORE COMMENCING ANY WORK.
- ALL WORK SHALL BE PERFORMED, AS APPLICABLE IN ACCORDANCE WITH OPSS 407, AND 410.
- PIPE MATERIAL TO BE PVC SDR-35 AND CONFORMING TO OPSS 1841, UNLESS INDICATED OTHERWISE. PVC SEWERS TO BE INSTALLED PER OPSD 802.010 (MODIFIED), BEDDING AND COVER MATERIALS TO BE OPSD 1010 GRANULAR 'A' CRUSHER-RUN LESTONE BEDDING COMPACTED TO 95% SPMD.
- ALL SEWERS WITH LESS THAN 1.8 METERS OF COVER ARE SUBJECTED TO INSULATION DETAIL, S35 OF THE CITY OF OTTAWA ON DRAWING C-104
- PIPE BACKFILL MATERIAL TO BE APPROVED NATIVE MATERIAL OR SELECT SUBGRADE MATERIAL IN CONFORMANCE WITH OPSS 212
- ALL MAINTENANCE HOLES AND CATCH BASIN MAINTENANCE HOLES TO BE 1200mm Ø AS PER OPSD 701.010, UNLESS INDICATED OTHERWISE. MAINTENANCE HOLES AND CATCH BASIN MAINTENANCE HOLES TO BE INSTALLED PER OPSD 407.
- ALL CATCH BASINS TO BE 600x600mm AS PER OPSD 705.010, UNLESS INDICATED OTHERWISE. CATCH BASINS TO BE INSTALLED PER OPSD 407.
- EXCAVATING, BACKFILLING, AND COMPACTING REQUIRED FOR MAINTENANCE HOLES, CATCH BASIN MAINTENANCE HOLES, AND CATCH BASINS TO BE COMPLETED AS PER OPSD 402. THEY ARE TO BE BACKFILLED WITH OPSS GRANULAR 'B' COMPACTED TO 98% SPMD. JOINTS BETWEEN SECTIONS TO BE WRAPPED WITH NON-WOVEN GEOTEXTILE.
- FOR SANITARY STRUCTURES: CAST IRON MAINTENANCE HOLE COVER AS PER OPSD 401.010 TYPE 'A'.
- FOR STORM STRUCTURES: CAST IRON CATCH BASIN MAINTENANCE HOLE COVER AS PER OPSD 401.010 TYPE 'B' AND CAST IRON CATCH BASIN COVER AS PER OPSD 400.020.
- SANITARY MAINTENANCE HOLES REQUIRE BENCHING AS PER OPSD 701.021.
- THE CONTRACTOR IS RESPONSIBLE FOR MAKING OR ARRANGING ALL CONNECTIONS TO THE EXISTING SEWERS AS PER MUNICIPAL REQUIREMENTS. PRIOR TO CONNECTION, THE CONTRACTOR MUST PROVIDE, TO THE CONSULTANT / ENGINEER AND THE CITY FOR APPROVAL, ALL TEST RESULTS PERFORMED ON THE INTERNAL SERVICES. ADVISE THE CITY PUBLIC WORKS AT LEAST 72 HOURS IN ADVANCE BEFORE ANY CONNECTION TO THE CITY SERVICES. CO-ORDINATE WITH CITY OF OTTAWA AS REQUIRED.
- TERMINATE AND PLUG ALL SERVICE CONNECTIONS AT 1.0 m FROM EDGE OF THE BUILDING.
- ALL SEWERS TO BE C.C.T.V. INSPECTED BY THE CONTRACTOR AS PER OPSD 409. TWO COPIES OF THE INSPECTION REPORT MUST BE PROVIDED TO THE CONSULTANT AND THE C.C.T.V. INSPECTION IN DVD FORMAT ONLY.
- SUBDRAIN KNOCKOUT (KO) WILL BE PRE-MANUFACTURED WITH CATCH BASINS AND MAINTENANCE HOLES.
- THE STORMWATER TSS QUALITY REQUIREMENTS WILL BE ACHIEVED BY INSTALLING A EFO-04 OR EQUIVALENT TO ACHIEVE 80% TSS REMOVAL. THE OIL/GREASE SEPARATOR IS TO HAVE A SEDIMENT CAPACITY OF 1190L, AN OIL CAPACITY OF 265L, AND FOR A MAXIMUM TREATMENT FLOW RATE OF 12.9 L/s.
- OGS WILL REQUIRE PERIODIC MAINTENANCE AND CLEANING AS PER MANUFACTURERS SPECIFICATIONS - TYPICAL CLEANING INTERVAL IS ONCE A YEAR. ANNUAL CLEANING AGREEMENT NEEDS TO BE WITNESSED BY THE CITY.
- ALL BUILDINGS FOUNDATION DRAINS TO BE CONNECTED TO THE STORM SEWER DOWNSTREAM OF THE ICD.

#### NOTES: WATERMAIN

- ALL WATERMAIN TO BE INSTALLED AT MINIMUM COVER OF 2.4m BELOW FINISHED GRADE, WHERE THE MINIMUM COVER OF 2.4m IS NOT REACHED, THERMAL INSULATION IS REQUIRED AS PER CITY OF OTTAWA DETAIL W22.
- WATERMAIN PIPE MATERIALS TO BE CLASS PVC DR-18, OR APPROVED EQUIVALENT, UNLESS INDICATED OTHERWISE.
- WATERMAIN TO BE CONSTRUCTED AS PER OPS 441 AND OPSD 802.010, WATERMAIN BEDDING AND COVER MATERIAL TO BE OPSD 1010 GRANULAR 'A' CRUSHER-RUN LESTONE BEDDING COMPACTED TO 95% SPMD.
- A CONTINUOUS 12 GAUGE COPPER TRACER WIRE MUST BE INSTALLED OVER ALL WATERMAINS. TRACER WIRE SHALL BE TIED TO ALL FIRE HYDRANTS.
- INSTALLATION OF A WATERMAIN PIPE CROSSING A SEWER PIPE SHALL BE AS PER CITY OF OTTAWA DETAILS W25 AND W25.2.
- IF WATERMAIN PIPE MUST BE DEFLECTED TO MEET ALIGNMENT, ENSURE THAT THE AMOUNT OF DEFLECTION USED IS LESS THAN HALF THAT RECOMMENDED BY THE MANUFACTURER.
- CATHODIC PROTECTION REQUIRED FOR ALL IRON FITTINGS AS PER OPSD 1103.011.
- THRUST BLOCKS AND RESTRAINING AS PER OPSD 1103.010 AND OPSD 1103.020.
- HYDRANT INSTALLATION AS PER OPSD 1105.010 AND OPSD 441. HYDRANT TO COMPLY WITH AWWA C502.
- HYDRANTS MUST HAVE THREE EXITS: TWO 65 mm AND ONE 100.0 mm (STORZ) OF STAINLESS STEEL) WITH DRAIN. FIRE HYDRANTS MUST BE INSTALLED SUCH THAT THE STORZ' EXIT POINTS TOWARDS THE BUILDING IT WILL SERVICE. THE CONTRACTOR MUST ENSURE THAT THE BREAKAWAY FLANGE IS LOCATED ABOVE THE FINISHED GROUND (APPROXIMATELY 150 mm).
- FIRE FLOW TESTS FOLLOWED BY COLOUR CODING OF HYDRANTS (AS PER NFPA-291) SHALL BE CARRIED OUT PRIOR TO SUBSTANTIAL COMPLETION OF THE WORK.
- WATERMAIN AND HYDRANT CONTROL VALVES IN THE 100 - 300 mm RANGE WILL BE RESILIENT SEATING GATE VALVES (AWWA C509) WITH MECHANICAL JOINT CONNECTIONS. VALVES WILL OPERATE COUNTER-CLOCKWISE TO OPEN WITH A NON-RISEING STEM. VALVES WILL BE COMPLETE WITH THE STANDARD AWWA 50 mm OPERATING NUT. VALVES TO BE INSTALLED AS PER OPSD 441.
- PIPE FITTINGS (BENDS, TEES, CROSSES, REDUCERS, ETC.) WILL BE MECHANICAL JOINT (AWWA C-111) WITH CEMENT MORTAR LINING (AWWA C-104).
- COUPLERS MUST BE COMPRESSION TYPE WITH MINIMUM PRESSURE RATINGS OF 1035 kPa. COUPLERS MUST BE MUELLER 11-12940.
- VALVE BOXES MUST BE COMPLETE (FULLY METALLIC) 3 PIECE SLIDING TYPE WITH GATE PLATES.
- WATERMAINS MUST BE THOROUGHLY FLUSHED AND CLEANED TO REMOVE ALL DIRT AND DEBRIS PRIOR TO THE DISINFECTION PROCESS.
- ALL WATERMAINS SHALL BE HYDROSTATICALLY AND BACTERIOLOGICALLY TESTED AS PER PROVINCIAL AND MUNICIPAL REGULATIONS. IT IS THE CONTRACTOR'S RESPONSIBILITY TO ENSURE THAT ALL REQUIREMENTS ARE FOLLOWED.
- THE DISINFECTION PROCEDURE WHICH FOLLOWS INITIAL FLUSHING AND CLEANING CONSISTS OF CHLORINATION, FINAL FLUSHING AND BACTERIOLOGICAL TESTING. DISINFECTION MUST BE PERFORMED BY THE CONTRACTOR USING METHODS APPROVED BY THE CITY OF OTTAWA AND IN ACCORDANCE WITH MINISTRY OF ENVIRONMENT AND CLIMATE CHANGE GUIDELINES. DOSAGE MUST BE 100 ppm WITH A MINIMUM RESIDUAL OF 25 ppm AFTER 24 HOURS. DISINFECTANT MUST BE SUPPLIED BY THE CONTRACTOR AND MUST BE ANSI APPROVED. TESTING AND TEST RESULTS MUST BE WITNESSED BY CITY OF OTTAWA PERSONNEL.

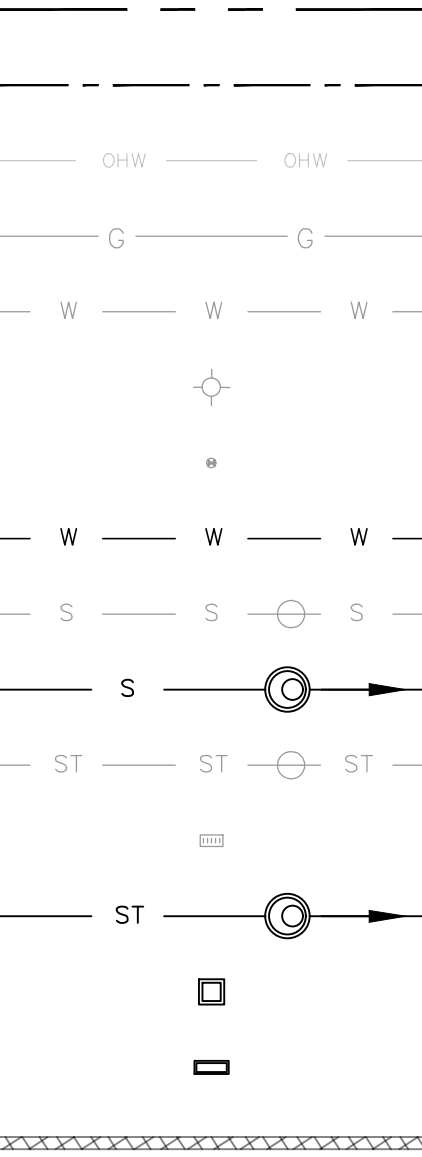
#### UNDERGROUND STORMWATER STORAGE

- UNDERGROUND STORMWATER STORAGE SYSTEM PIPE TYPE OR EQUIVALENT STORAGE REQUIREMENT: 78m³
- CHAMBER TYPE: LANDMAX 1050mm Ø OR EQUIVALENT
- BOTTOM OF GRANULAR PAD ELEVATION: 84.09m
- PIPE INVERT ELEVATION: 84.33m
- PIPE OBVERT ELEVATION: 85.38m
- TOP OF PIPE ELEVATION: 85.47m
- TOP OF SYSTEM TO BE A MINIMUM OF 750mm BELOW PARKING LOT PAVEMENT STRUCTURE.

#### TRENCH DRAIN REQUIREMENTS:

- MINIMUM GRATE WIDTH OF 300mm
- MINIMUM GRATE LENGTH OF 1000mm
- STEEL OR STAINLESS STEEL GRATE STRONG ENOUGH TO WITHSTAND CAR & TRUCK LOAD, AS PER MANUFACTURER
- EXPANSION JOINT REQUIRED IN BETWEEN CAR WASH ENTERIT CONCRETE SLAB AND TRENCH DRAIN
- SHOP DRAWING BY MANUFACTURER TO BE PROVIDE PRIOR TO INSTALLATION.

#### LEGEND:



SITE PROPERTY LINE  
PROPOSED NEW PROPERTY LINE DUE TO RIGHT-OF-WAY WIDENING  
EXISTING OVER HEAD HYDRO LINE  
EXISTING GAS LINE  
EXISTING WATERMAIN  
EXISTING FIRE HYDRANT  
EXISTING VALVE COVER  
PROPOSED WATERMAIN  
EXISTING SANITARY SEWER AND MAINTENANCE HOLE  
PROPOSED SANITARY SEWER AND MAINTENANCE HOLE  
EXISTING STORM SEWER AND MAINTENANCE HOLE  
EXISTING STORM CATCH BASIN  
PROPOSED STORM SEWER AND MAINTENANCE HOLE  
PROPOSED CATCH BASIN  
PROPOSED TRENCH DRAIN  
PIPE INSULATION REQUIRED AS PER CITY OF OTTAWA DETAIL S35

#### CROSSING TABLE

CROSSING NO.	TOP OF PIPE ELEV. AT CROSSING	PIPE INV. ELEV. AT CROSSING	CLEARANCE (m)
CR-01	WM. TOP 84.35	STM. INV 84.82	0.47
CR-02	STM. TOP 84.95	SAN. INV 85.37	0.41
CR-03	STM. TOP 84.88	SAN. INV 85.65	0.77
CR-04	WM. TOP 84.66	STM. INV 86.10	1.44
CR-05*	WM. TOP 83.88	STM. INV 84.18	0.30

\*50mm Ø WATER SERVICE LINE TO BE DIVERTED AS PER CITY OF OTTAWA DETAIL W38

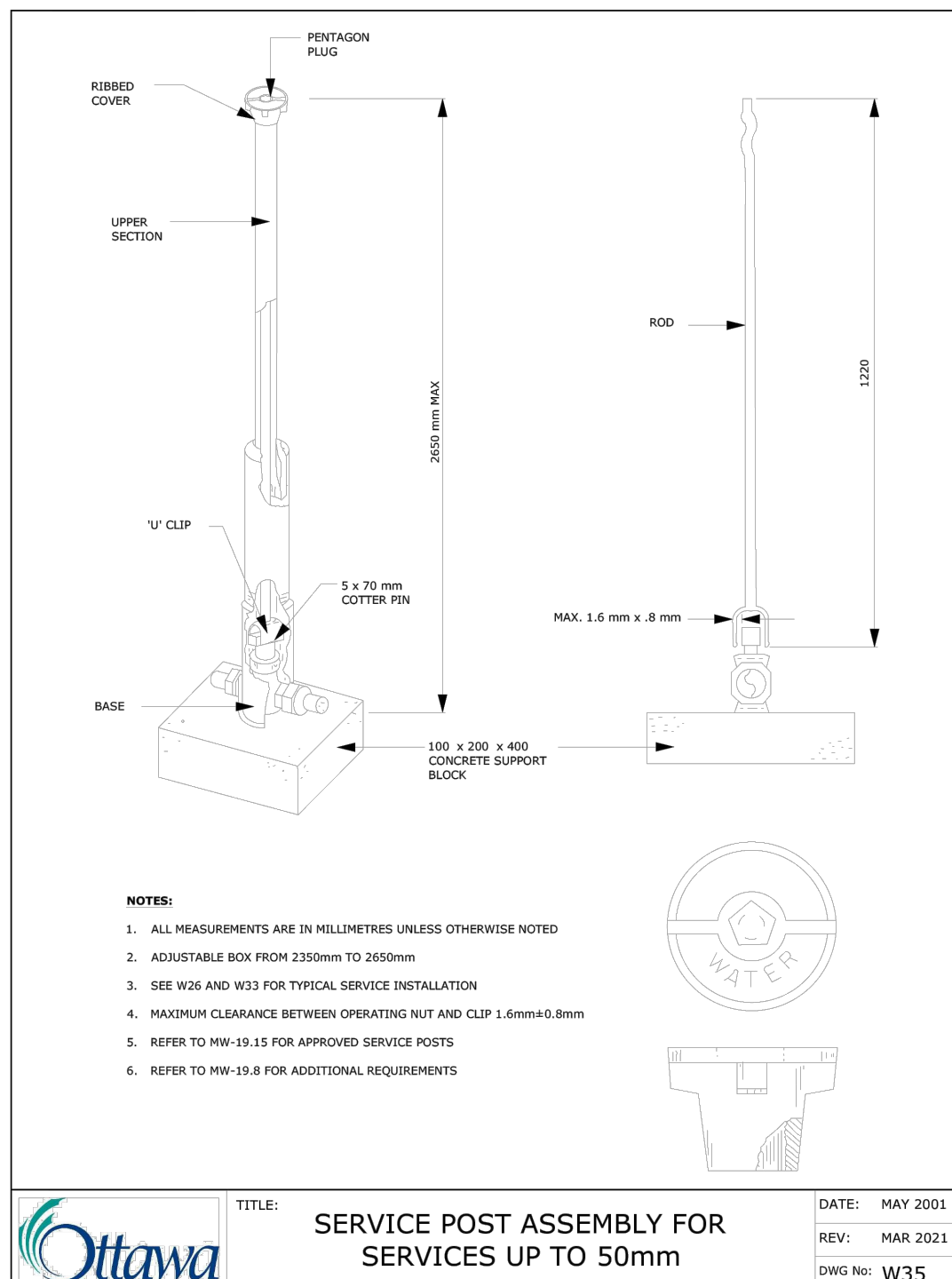
#### ICD SCHEDULE (ORIFICE)

ICD ID	LOCATION	ORIFICE INVERT (m)	FLOW 5y/100y (L/s)	HEAD 5y/100y (m)	EQUIVALENT DIAMETER (mm)	MODEL
01	CBMH-04	84.00	32.5/44.3	0.68/1.31	135	FRAME & PLATE CONTROL

\*ICD SHOP DRAWING SHALL BE SUBMITTED TO PARSONS BEFORE COMMENCING ANY WORK

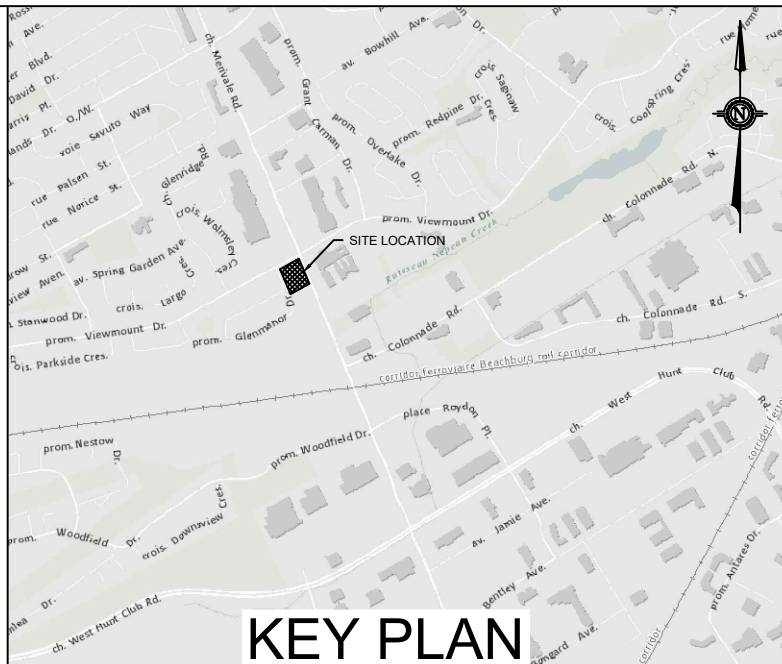
#### ROOF TOP DRAIN INFORMATION

BUILDING	ROOFTOP STORAGE VOLUME (m³)	MAX DEPTH OF FLOW (mm)	LOCATION OF ROOF DRAIN AND SLOPPERS	NUMBER OF ROOF DRAINS	FLOW PER ROOF DRAIN (L/s)	TOTAL FLOW FROM ROOF (L/s)
A - PROPOSED CONVENIENCE STORE	7.0 / 5-yr 15.8 / 100-yr	98.1 / 5-yr 129.2 / 100-yr	SEE LOCATION ON PLAN	2	1.47 / 5-yr 1.93 / 100-yr	2.93 / 5-yr 3.86 / 100-yr
B - EXISTING CAR WASH	0.6 / 5-yr 1.4 / 100-yr	68.8 / 5-yr 97.0 / 100-yr	AS PER EXISTING CONDITIONS	2	1.03 / 5-yr 1.45 / 100-yr	2.06 / 5-yr 2.90 / 100-yr
C - PROPOSED GAS PUMP CANOPY	3.4 / 5-yr 8.0 / 100-yr	90.2 / 5-yr 120.4 / 100-yr	SEE LOCATION ON PLAN	2	1.35 / 5-yr 1.80 / 100-yr	2.70 / 5-yr 3.60 / 100-yr



TITLE: SERVICE POST ASSEMBLY FOR SERVICES UP TO 50mm

DATE: MAY 2021  
REV: MAR 2021  
DWG No: W35



#### KEY PLAN

#### TOPOGRAPHIC INFORMATION & BENCHMARK

TOPOGRAPHIC SURVEY COMPLETED BY VRSS ON MARCH 20<sup>th</sup> TO 22<sup>nd</sup>, 2023. ELEVATIONS SHOWN ARE GEODETIC AND ARE REFERRED TO THE CGVD-28 GEODETIC DATUM.

SITE BENCHMARK No. 1 LOCATED ON NORTH WEST INTERSECTION OF MERIVALE ROAD, AND VIEWMOUNT DRIVE. FIRE HYDRANT TOP OF NUT ELEVATION = 89.19

#### LEGAL PLAN

LEGAL SURVEY COMPLETED BY FARLEY, SMITH & DENIS SURVEYING LTD. ON APRIL 21<sup>st</sup>, 2023. BEARINGS ARE ASTRONOMIC AND ARE REFERRED TO THE WESTERLY LIMIT OF MERIVALE ROAD HAVING A BEARING OF N 22° 18' 30\"/>

No.	DATE	DESCRIPTION	BY
05	2025-12-18	ISSUED FOR SPA - REV04	M.T.
04	2025-09-05	ISSUED FOR SPA - REV03	M.T.
03	2025-04-01	ISSUED FOR SPA - REV02	M.T.
02	2025-02-19	ISSUED FOR SPA - REV01	M.T.
01	2024-03-21	ISSUED FOR SPA	M.T.
REVISIONS			



1223 Michael Street, Suite 100, Ottawa, Ontario, Canada K1J 7T2  
Tel: (613) 738-4160 Fax: (613) 739-7105

CLIENT

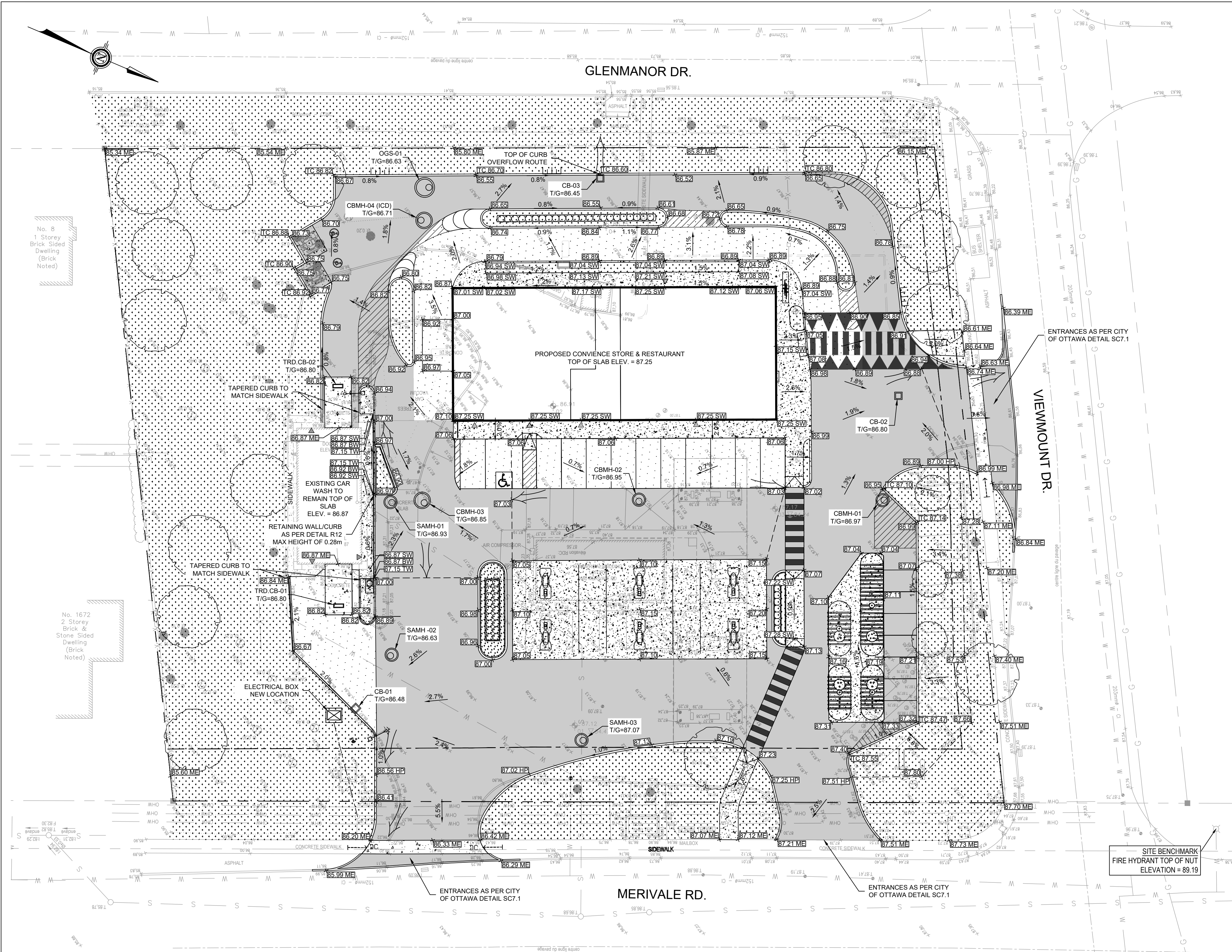
#### HARNOIS ÉNERGIES

PROJECT  
CONVENIENCE STORE/RESTO  
1660 MERIVALE  
NEPEAN, ONTARIO

#### SITE SERVICING PLAN

DESIGNED BY	P.C.	PROJECT NO.	478684
DRAWN BY	P.C.		
CHECKED BY	M.T.	C-102	SS
DATE	MAY 2025		
SCALE	1:250	DRAWING NO.	DRAWING





**LEGEND:**

- EXISTING PROPERTY LINE
- PROPOSED NEW PROPERTY LINE DUE TO RIGHT-OF-WAY WIDENING
- TERRACE (3:1 MAX)
- EXISTING GRADE
- PROPOSED GRADE
- PROPOSED TOP OF WALL GRADE
- PROPOSED BOTTOM OF WALL GRADE
- PROPOSED FINISHED FLOOR ELEVATION
- PROPOSED TOP OF SIDEWALK ELEVATION
- MATCH EXISTING ELEVATION
- PROPOSED SURFACE SLOPE
- PROPOSED SANITARY MAINTENANCE HOLE
- PROPOSED STORM MAINTENANCE HOLE
- PROPOSED CATCH BASIN
- PROPOSED TRENCH DRAIN
- PROPOSED CURB
- GRADE BREAK LINE
- PROPOSED DEPRESSED CONCRETE CURB WITH TWSI PER CITY STD DWG SC7.3
- MAJOR OVERLAND FLOW ROUTE
- PROPOSED LIGHT DUTY PAVEMENT
- PROPOSED HEAVY DUTY PAVEMENT
- PROPOSED CONCRETE SIDEWALK
- PROPOSED LANDSCAPE

PAVEMENT STRUCTURES			
MATERIAL	LIGHT DUTY	HEAVY DUTY	
Asphaltic Concrete Surface Course: HL-3 (OPSS 1150) (PG 58-34) OR SUPERPAVE 12.5	60 mm	40 mm	
Asphaltic Concrete Binder Course: HL-8 (OPSS 1150) (PG 58-34) OR SUPERPAVE 19.0	-	60 mm	
Granular Base: OPSS 1010 Granular A	225 mm	200 mm	
Granular Sub-base: OPSS 1010 Granular B, Type II	350 mm	450 mm	
Geotextile membrane as per OPSS	YES	NO	

FROM: ÉTUDE GÉOTECHNIQUE ET CARACTÉRISATION ENVIRONNEMENTALE DES SOLS - RÉFLECTION D'UNE STATION D'ESSENCE. 1660 MERIVALE, NEAPEAN, ONTARIO, BY SCGPOTEK. DATED MAI 2023

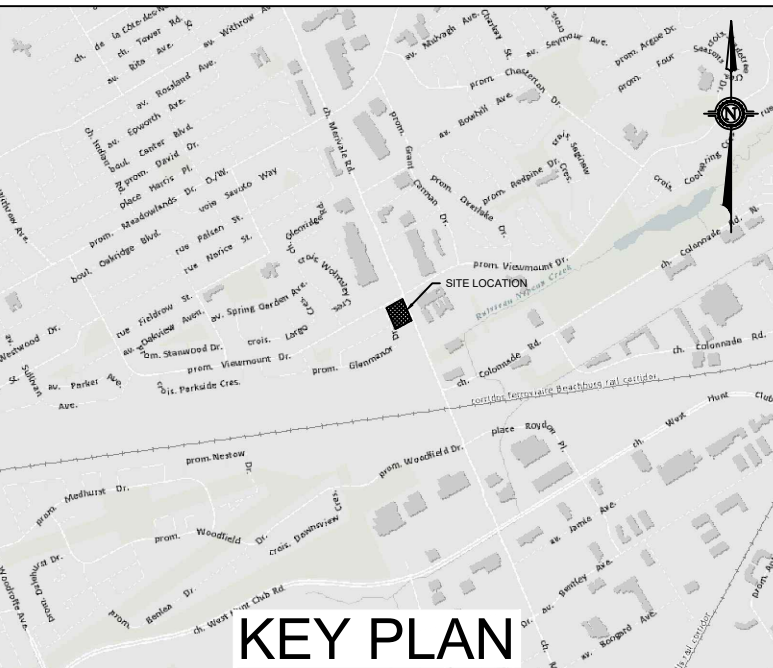
**NOTES: GENERAL**

- THE CONTRACTOR MUST CONFORM TO ALL LAWS, CODES, ORDINANCES, AND REGULATIONS ADOPTED BY FEDERAL, PROVINCIAL OR MUNICIPAL GOVERNMENT COUNCILS AND GOVERNMENT AGENCIES, APPLYING TO WORK TO BE CARRIED OUT. WHEREVER STANDARDS, LAWS AND/OR REGULATIONS ARE MENTIONED THEY REFER TO THEIR CURRENT VERSIONS, MODIFICATIONS INCLUDED.
- ALL MATERIALS AND CONSTRUCTION METHODS SHALL BE IN ACCORDANCE WITH THE LATEST EDITION OF THE ONTARIO PROVINCIAL STANDARD SPECIFICATIONS AND DRAWINGS (OPSS AND OPSD), THE ONTARIO MINISTRY OF ENVIRONMENT AND CLIMATE CHANGE, THE ONTARIO MINISTRY OF NATURAL RESOURCES, APPLICABLE CONSERVATION AUTHORITIES, THE MUNICIPAL STANDARD SPECIFICATIONS AND DRAWINGS, AND ALL OTHER GOVERNING AUTHORITIES AS THEY APPLY, UNLESS OTHERWISE INDICATED.
- ALL MATERIAL SUPPLIED AND PLACED FOR PARKING LOT AND ACCESS ROAD CONSTRUCTION SHALL BE TO OPSS STANDARDS AND SPECIFICATIONS UNLESS OTHERWISE NOTED. CONSTRUCTION TO OPSS 206, 310 & 314. MATERIALS TO OPSS 1001, 1003 & 1010.
- THE LOCATION OF EXISTING UNDERGROUND MUNICIPAL SERVICES AND PUBLIC UTILITIES AS SHOWN ON THE PLANS ARE APPROXIMATE. THE CONTRACTOR MUST DETERMINE THE EXACT LOCATION, SIZE, MATERIAL AND ELEVATION OF ALL EXISTING UTILITIES (ON-SITE AND OFF-SITE) PRIOR TO ANY EXCAVATION WORK. DAMAGE TO ANY EXISTING SERVICES AND/OR EXISTING UTILITIES DURING CONSTRUCTION, WHETHER OR NOT SHOWN ON THE DRAWINGS MUST BE REPAIRED BY THE CONTRACTOR AT HIS OWN EXPENSE.
- THE CONTRACTOR SHALL DETERMINE THE EXACT INVERT (GEODETIC ELEVATION), DIAMETER AND CONSTRUCTION MATERIAL OF THE EXISTING CONDUITS AT THE PROPOSED CONNECTIONS. THEY SHALL ALSO CARRY OUT, IF NECESSARY, EXPLORATORY DIGS IN ORDER TO DETERMINE THE EXACT LOCATION AND INVERTS OF EXISTING DUCK BANKS. THIS INFORMATION SHALL IMMEDIATELY BE PROVIDED TO THE CONSULTANT PRIOR TO START UNDERTAKING ANY MUNICIPAL SERVICES WORK AND A 48 HOUR PERIOD MUST BE ALLOCATED TO THE CONSULTANT FOR DESIGN REVIEW.
- AT PROPOSED UTILITY CONNECTION POINTS AND CROSSINGS (I.E. STORM SEWER, SANITARY SEWER, WATER, ETC.) THE CONTRACTOR SHALL DETERMINE THE PRECISE LOCATION AND DEPTH OF EXISTING UTILITIES AND REPORT ANY DISCREPANCIES OR CONFLICTS TO THE ENGINEER BEFORE COMMENCING WORK.
- CONTRACTOR IS RESPONSIBLE FOR ALL LAYOUT FOR CONSTRUCTION PURPOSES.
- THE CONTRACTOR IS RESPONSIBLE FOR THE COORDINATION OF ALL WORK AND ACTIVITIES WITH OTHERS TRADES AND CONTRACTORS.
- THE CONTRACTOR IS THE ONLY PERSON IN CHARGE OF SAFETY ON THE BUILDING SITE. THE CONTRACTOR IS RESPONSIBLE FOR PROVIDING ADEQUATE PROTECTION OF THE WORKERS, OTHER PERSONNEL AND THE GENERAL PUBLIC, PROTECTION OF MATERIALS, AS WELL AS MAINTAINING IN GOOD CONDITION THE COMPLETED WORKS AND WORKS TO BE COMPLETED. THE CONTRACTOR MUST PROVIDE AT ANY TIME.

- A SUFFICIENT NUMBER OF FENCES, BARRIERS, POSTERS, GUARDS AND OTHERS TO ENSURE SAFETY.
- NECESSARY CONVENIENCES FOR THE COMPLETION OF WORK SUCH AS HEATING, LIGHTING, VENTILATION ETC.
- CONTRACTOR IS RESPONSIBLE TO OBTAIN THE VARIOUS PERMITS/APPROVALS REQUIRED TO COMPLETE ALL THE WORKS AND ACTIVITIES AND BEAR COST OF THE SAME, SUCH AS BUT NOT LIMITED TO, ROAD CUT PERMITS, SEWER PERMITS, WATER PERMIT, ETC. AND THEIR ASSOCIATED COSTS.
- ALL ELEVATIONS ARE GEODETIC AND UTILIZE METRIC UNITS.
- JOB BENCH MARK - CONFIRM WITH PARSONS PRIOR TO UTILIZATION. THE CONTRACTOR MUST MAINTAIN BENCHMARKS AND LANDMARK REFERENCES AS IS. OTHERWISE THESE REFERENCES WILL BE REPOSITIONED BY A CERTIFIED LAND SURVEYOR AT THE CONTRACTOR'S EXPENSE.
- ALL GROUND SURFACES SHALL BE EVENLY GRADED WITHOUT PONDING AREAS AND LOW POINTS EXCEPT WHERE APPROVED SWALE OR CATCH BASIN OUTLETS ARE PROVIDED.
- IF GROUNDWATER IS ENCOUNTERED DURING CONSTRUCTION, DEWATERING OF EXCAVATIONS COULD BE REQUIRED. IT IS ASSUMED THAT GROUNDWATER MAY BE CONTROLLED BY SUMP AND PUMPING METHODS. THE CONTRACTOR SHALL OBTAIN A PERMIT TO TAKE WATER IF SITE CONDITIONS REQUIRE TAKING MORE THAN A TOTAL OF 400 000 L/DAY.
- STRIP AND REMOVE ALL TOPSOIL FROM IMPROVED AREAS. SITE PREPARATION INCLUDES CLEARING, GRUBBING, STRIPPING OF TOPSOIL, DEMOLITION, REMOVAL OF UNSUITABLE MATERIALS, CUT, FILL AND ROUGH GRADING OF ALL AREAS TO RECEIVE FINISHED SURFACES.
- ABUTTING PROPERTY GRADE TO BE MATCHED.
- ALL EDGES OF DISTURBED PAVEMENT SHALL BE SAW CUT TO FORM A NEAT AND STRAIGHT LINE PRIOR TO PLACING NEW PAVEMENT. PAVEMENT REINSTATEMENT SHALL BE WITH STEP JOINTS OF 300mm WIDTH MINIMUM.
- CURBS TO BE BARRIER, CONSTRUCTED AS PER OPSD 600.110, EXCEPT WHERE INDICATED OTHERWISE. ELEVATION AT TOP OF CONCRETE CURBS TO BE 150 mm ABOVE THE ASPHALT, UNLESS OTHERWISE INDICATED ON THE DRAWINGS.
- DEPRESSED CURBS TO BE MOUNTABLE, CONSTRUCTED AS PER OPSD 600.100.
- LIGHT DUTY AND HEAVY DUTY ASPHALT PAVEMENTS TO BE CONSTRUCTED AS PER TABLE ON DRAWING C103.
- TRANSITION BETWEEN EXISTING AND PROPOSED PAVEMENT SHALL BE CONSTRUCTED AS PER DETAIL D3 ON DRAWING C104.
- RESTORE PAVEMENT STRUCTURE AND SURFACES ON EXISTING ROADS TO A CONDITION AT LEAST EQUAL TO ORIGINAL AND TO THE SATISFACTION OF THE CITY AUTHORITIES.
- CLEANLINESS ON THE SITE, INCLUDES THE CONTRACTOR SHALL CLEAN ROADWAYS AT HIS OWN COST AS DIRECTED BY THE OWNER'S REPRESENTATIVE. MATERIALS AND EQUIPMENT MUST BE LAID OUT IN AN ORGANIZED AND SAFE MANNER, AND ALL MATERIAL, EQUIPMENT AND TEMPORARY STRUCTURES WHICH ARE NO LONGER NECESSARY FOR THE EXECUTION OF THE CONTRACT MUST BE REMOVED

- FROM THE SITE.
- CONTRACTOR TO ENSURE MITIGATION MEASURES ARE IMPLEMENTED TO REDUCED THE RISK OF GROUND CONTAMINATION FROM PETROLEUM PRODUCTS.
- THE CONTRACTOR MUST ENSURE THE FOLLOWING MEASURES ARE IMPLEMENTED REGARDING THE HANDLING OF CONCRETE
  - CONCRETE SHOULD EITHER BE MIXED AWAY FROM THE SITE OR SHOULD BE PREPARED ON PAVED SURFACES IF ONLY SMALL QUANTITIES ARE REQUIRED (I.E. MINOR REPAIRS); EXCESS CONCRETE MUST BE DISPOSED OFF-SITE AT A LOCATION THAT MEETS ALL REGULATORY REQUIREMENTS.
  - THE WASHING OF CONCRETE TRUCKS AND OTHER EQUIPMENT USED FOR MIXING CONCRETE SHOULD NOT BE CARRIED OUT WITHIN 30 METERS OF A WATERCOURSE OR WETLAND AND SHOULD TAKE PLACE OUTSIDE OF THE WORK SITE.
  - ALL CONCRETE TRUCKS SHOULD COLLECT THEIR WASH WATER AND RECYCLE IT BACK INTO THEIR TRUCKS FOR DISPOSAL OFF-SITE AT A LOCATION MEETING ALL REGULATORY REQUIREMENTS.
- THE CONTRACTOR SHALL ENSURE THAT ALL EXCAVATED SURPLUS MATERIALS THAT WILL BE REQUIRED TO BE DISPOSED OFFSITE BE STOCKPILED TEMPORALLY FOR SAMPLING PRIOR BEING LOADED OFFSITE.
- MINIMIZE DISTURBANCE TO EXISTING VEGETATION DURING THE EXECUTION OF ALL WORKS.
- TRENCHING, BACKFILLING AND COMPACTING MUST CONFORM TO OPSS 401.
- DEWATERING OF PIPELINE, UTILITY AND ASSOCIATED STRUCTURE EXCAVATIONS TO BE COMPLETED AS PER OPSS 617.
- THE CONTRACTOR MUST CONTROL SURFACE RUNOFF FROM PRECIPITATION DURING CONSTRUCTION. FOR ALL GEOTECHNICAL WORK, CONTRACTOR TO REFER TO "GEOTECHNICAL INVESTIGATION, PROPOSED RESIDENTIAL DEVELOPMENT, 5581 DOCTOR LEACH DRIVE, OTTAWA, ONTARIO, BY PINCHIN LTD. DATED OCTOBER 12, 2022
- REMOVE FROM SITE ALL EXCESS EXCAVATED MATERIAL UNLESS OTHERWISE DIRECTED FROM THE ENGINEER. EXCAVATE AND REMOVE ALL ORGANIC MATERIAL AND DEBRIS LOCATED WITHIN THE PROPOSED BUILDING, PARKING AND ROADWAY LOCATIONS.
- THE CONTRACTOR IS RESPONSIBLE FOR ALL EXCAVATION, BACKFILL AND REINSTATEMENT OFF ALL AREAS DISTURBED DURING CONSTRUCTION TO EXISTING CONDITIONS OR BETTER AND ALL ASSOCIATED WORKS TO THE SATISFACTION OF THE CONSULTANT AND MUNICIPAL AUTHORITIES. ASPHALT REINSTATEMENT MUST BE IN ACCORDANCE WITH OPSS 310. LANDSCAPE AREAS TO BE REINSTATED WITH 150 mm OF TOPSOIL AND SOD IN ACCORDANCE WITH OPSS 802 AND OPSS 803.
- DURING THE CONSTRUCTION PERIOD THE CONTRACTOR IS RESPONSIBLE FOR INSTALLING AND MAINTAINING TEMPORARY TRAFFIC SIGNAGE, INCLUDING TRAFFIC SIGNS, TRAFFIC MARKINGS AND TEMPORARY TRAFFIC LIGHTS, AND FLAGMEN, AS REQUIRED BY THE OWNER, THE CONSULTANT, THE MUNICIPALITY, THE MTO, AND OTHER GOVERNING AUTHORITIES.
- CONSTRUCT SIDEWALK EXPANSION JOINTS & CONTROL JOINTS AS PER OPSD 310.020.

- CONSTRUCT CONCRETE SIDEWALK AS PER OPSD 310.020 AND OPSS 351. TACTILE WALKING SURFACE INDICATORS PER OPSS 351.
- DISPOSE OF CONTAMINATED MATERIALS AT APPROPRIATE OFF-SITE FACILITY THAT MEETS ALL REGULATORY REQUIREMENTS.
- BE PREPARED TO INTERCEPT, CLEAN UP, AND DISPOSE OF SPILLS OR RELEASES THAT MAY OCCUR WHETHER ON LAND OR WATER. MAINTAIN MATERIALS AND EQUIPMENT REQUIRED FOR CLEANUP OF SPILLS OR RELEASES READILY ACCESSIBLE ON SITE.
- PROMPTLY REPORT SPILLS AND RELEASES POTENTIALLY CAUSING DAMAGE TO ENVIRONMENT TO: AUTHORITY HAVING JURISDICTION OR INTEREST IN SPILL OR RELEASE INCLUDING CONSERVATION AUTHORITY, WATER SUPPLY AUTHORITIES, DRAINAGE AUTHORITY, ROAD AUTHORITY, AND FIRE DEPARTMENT.
- DECONTAMINATE EQUIPMENT AFTER WORKING IN POTENTIALLY CONTAMINATED WORK AREAS AND PRIOR TO SUBSEQUENT WORK OR TRAVEL ON CLEAN AREAS.
- CONTRACTOR IS TO SUBMIT A TRAFFIC MANAGEMENT PLAN FOR APPROVAL ONE (1) WEEK PRIOR TO ANY WORK WITHIN THE ROW LIMITS TO MEET THE REQUIREMENTS OF MTO BOOK 7. THE CONTRACTOR WILL BE REQUIRED TO IMPLEMENT ALL REQUIREMENTS OF THE MTO BOOK 7.
- CITY PUBLIC WORKS DEPARTMENT TO BE CONTACTED MINIMUM 7 DAYS PRIOR TO PLANNED DATE FOR CONNECTION TO EXISTING STORM SEWERS, SANITARY SEWERS, AND WATERMAIN. CONNECTION TO EXISTING TO TAKE PLACE IN THE PRESENCE OF APPROPRIATE CITY OF OTTAWA STAFF.
- ALL THREE SITE ENTRANCES TO BE INSTALLED AS PER CITY OF OTTAWA STANDARD DETAIL SC7.1



**TOPOGRAPHIC INFORMATION & BENCHMARK**  
TOPOGRAPHIC SURVEY COMPLETED BY VRSS ON MARCH 20<sup>th</sup> TO 22<sup>nd</sup>, 2023. ELEVATIONS SHOWN ARE GEODETIC AND ARE REFERRED TO THE CGVD-28 GEODETIC DATUM.  
  
**SITE BENCHMARK No. 1** LOCATED ON NORTH WEST INTERSECTION OF MERIVALE ROAD, AND VIEWMOUNT DRIVE. FIRE HYDRANT TOP OF NUT ELEVATION = 89.19  
  
**LEGAL PLAN**  
LEGAL SURVEY COMPLETED BY FARLEY, SMITH & DENIS SURVEYING LTD. ON APRIL 21<sup>st</sup>, 2023. BEARINGS ARE ASTRONOMIC AND ARE REFERRED TO THE WESTERLY LIMIT OF MERIVALE ROAD HAVING A BEARING OF N 22° 18' 30" W AS SHOWN ON REGISTERED PLAN 401392.

No.	DATE	DESCRIPTION	BY
REVISIONS			
05	2025-12-18	ISSUED FOR SPA - REV04	M.T.
04	2025-09-05	ISSUED FOR SPA - REV03	M.T.
03	2025-04-01	ISSUED FOR SPA - REV02	M.T.
02	2025-02-19	ISSUED FOR SPA - REV01	M.T.
01	2024-03-21	ISSUED FOR SPA	M.T.
No. DATE DESCRIPTION BY			
PROVINCE OF ONTARIO			



1223 Michael Street, Suite 100, Ottawa, Ontario, Canada K1J 7T2  
Tel: (613) 738-4160 Fax: (613) 739-7105

CLIENT

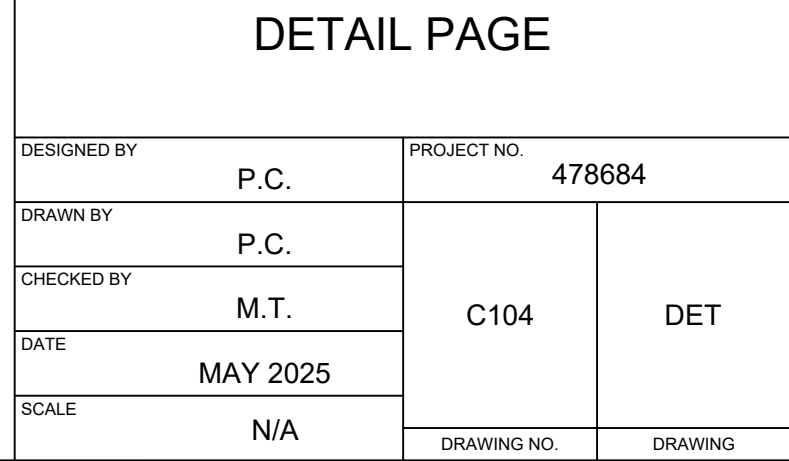
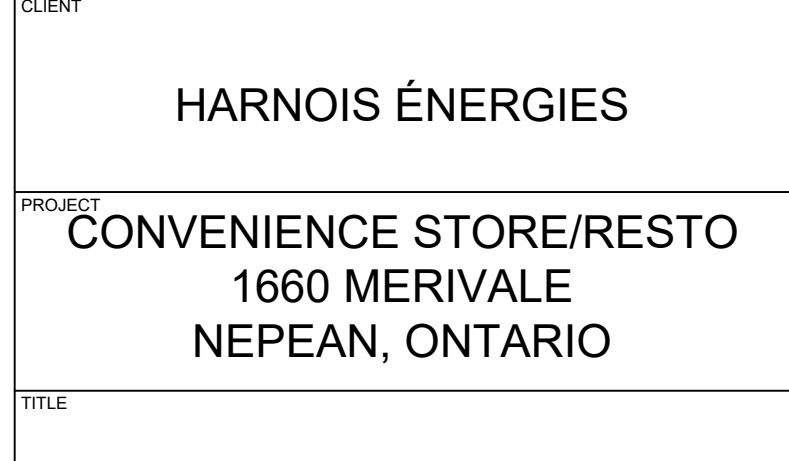
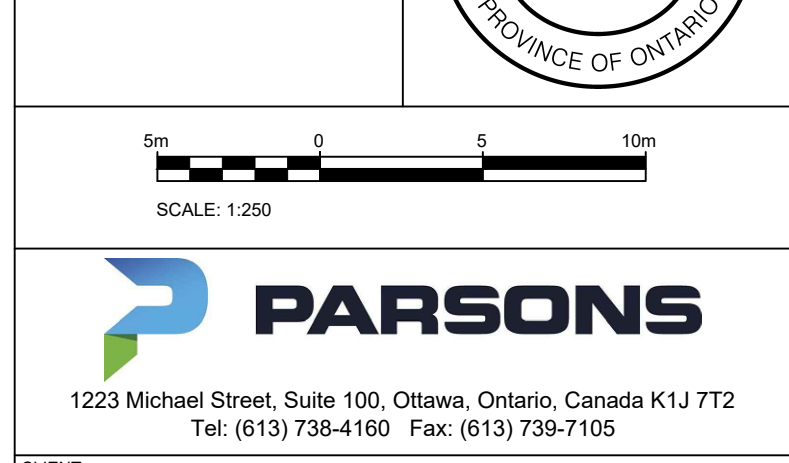
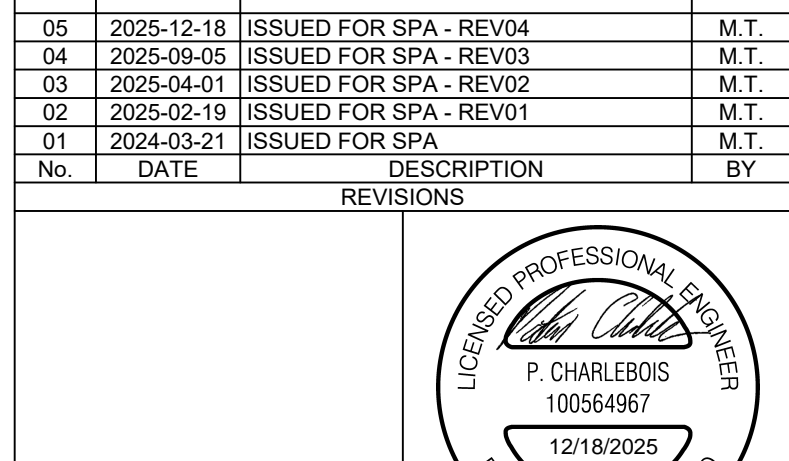
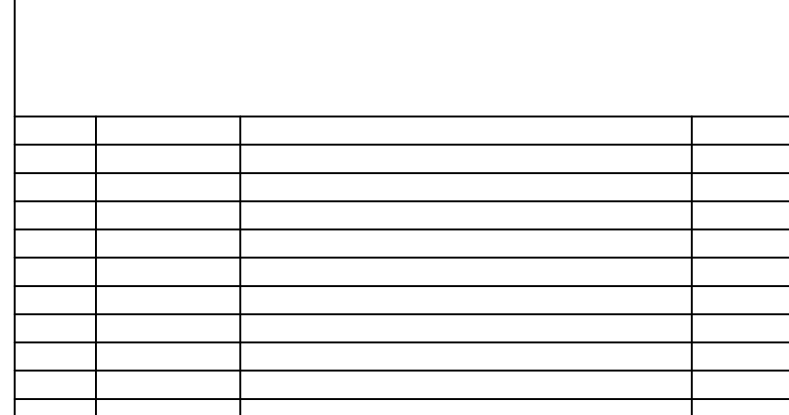
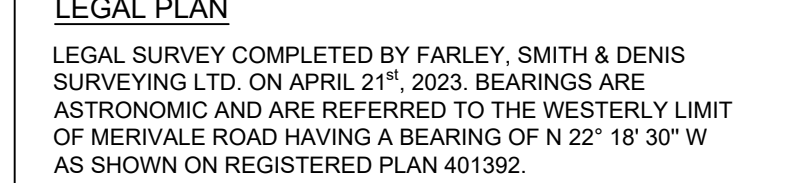
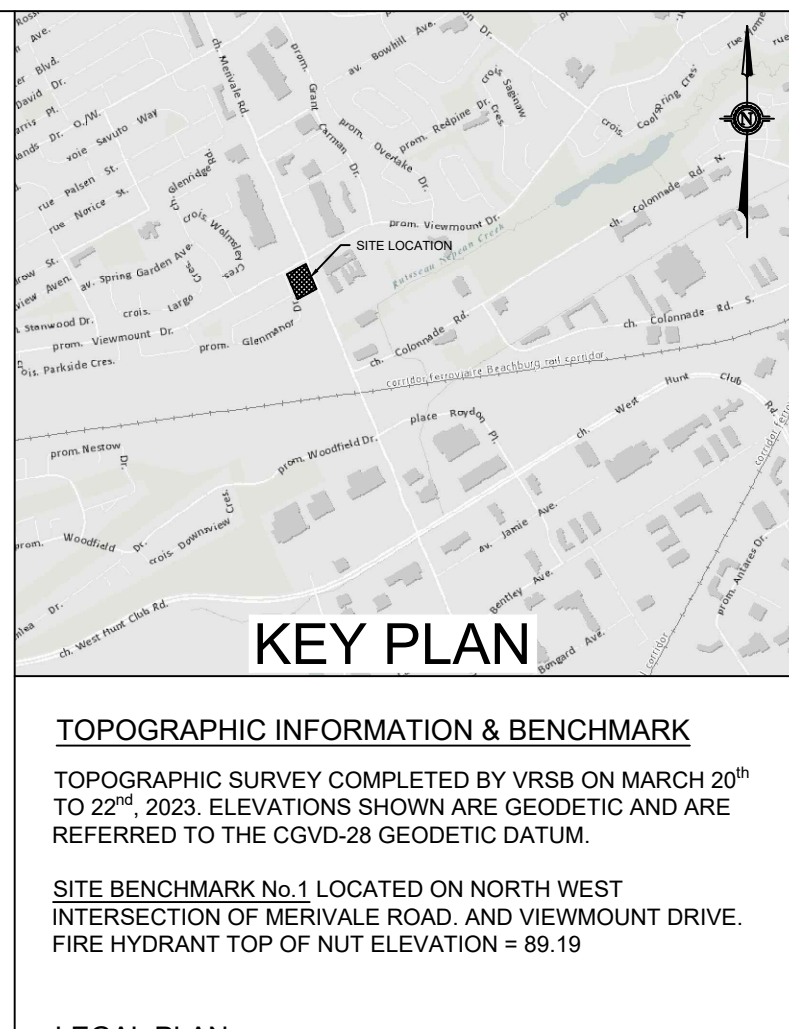
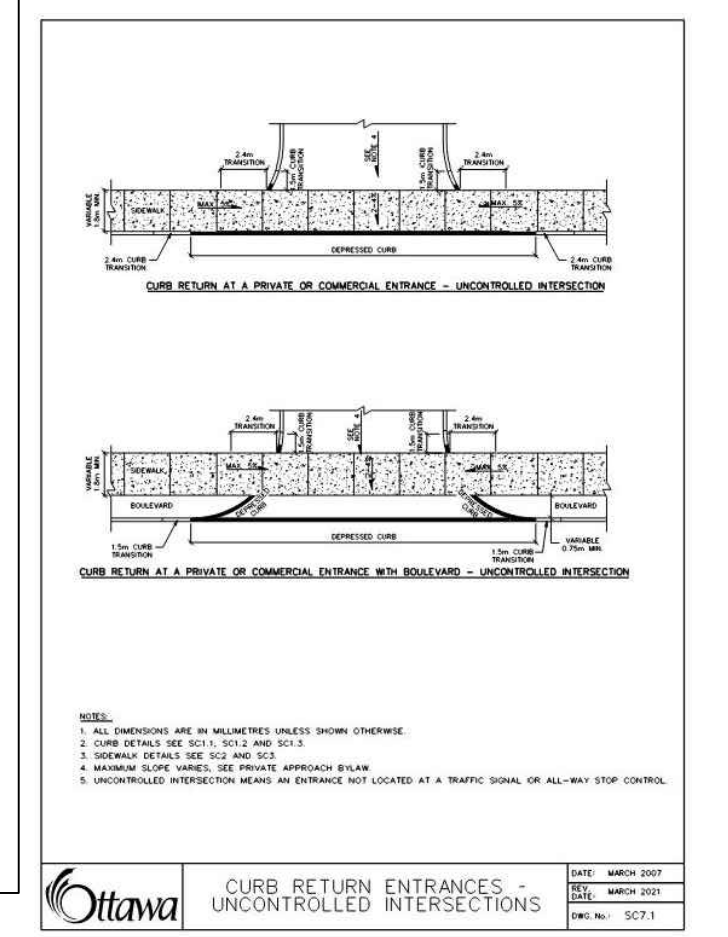
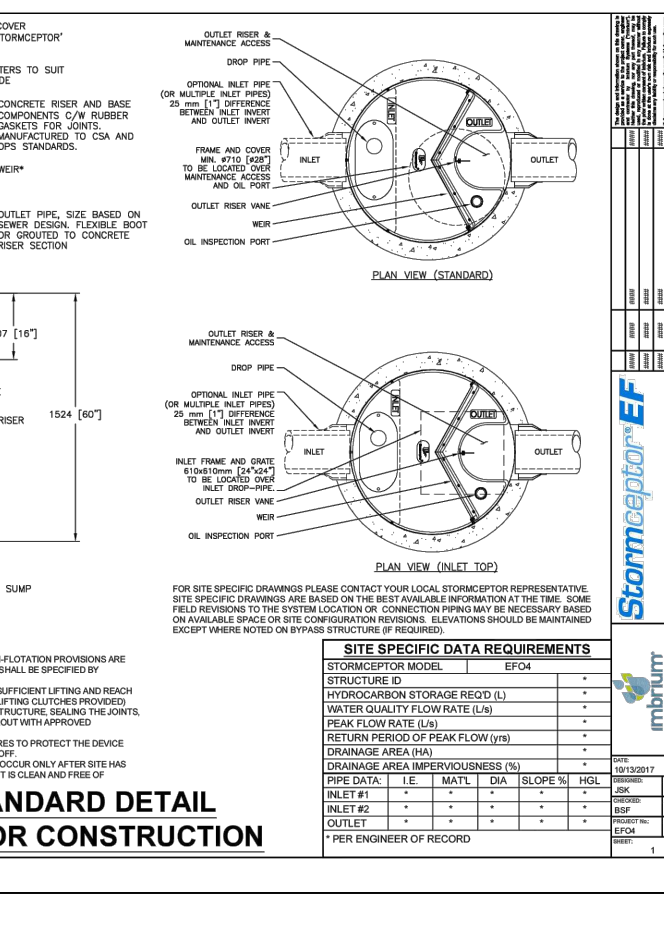
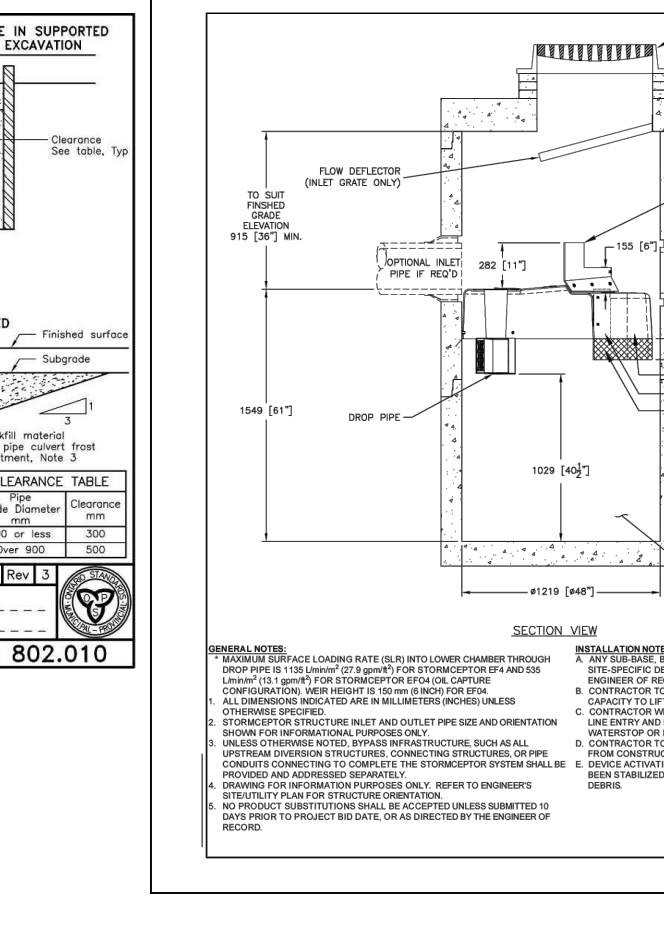
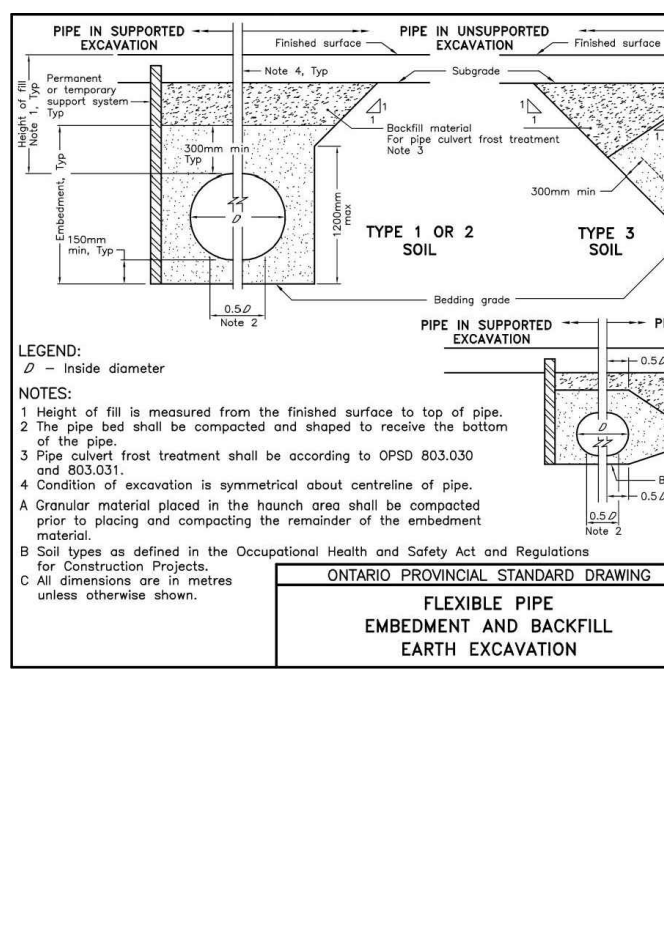
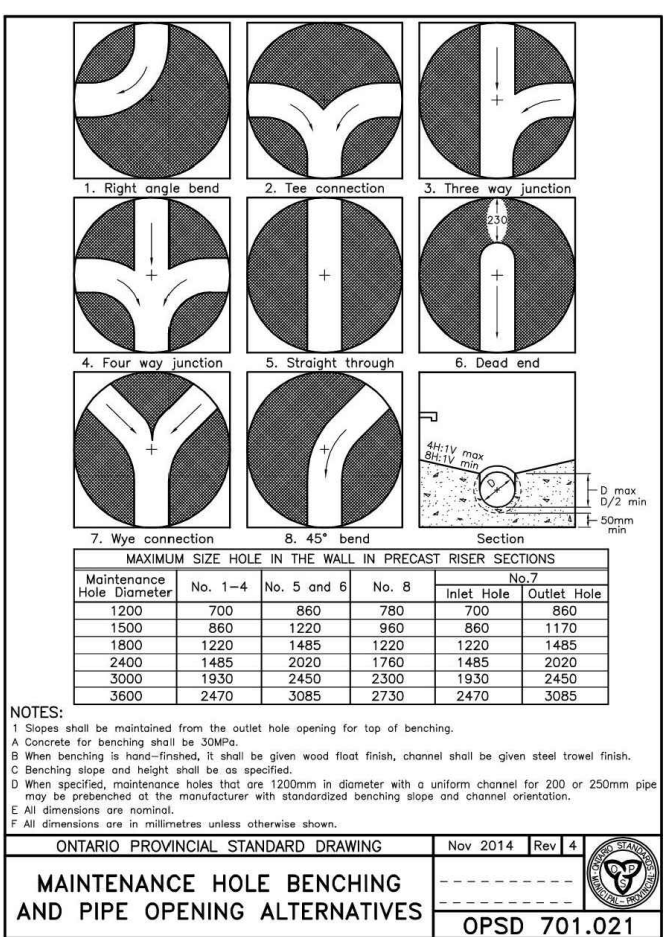
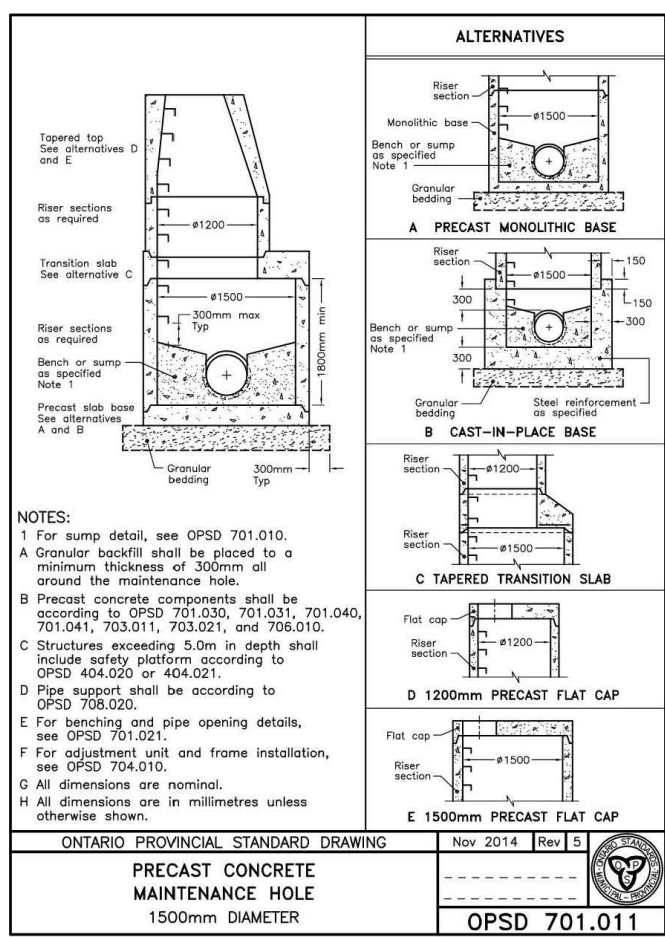
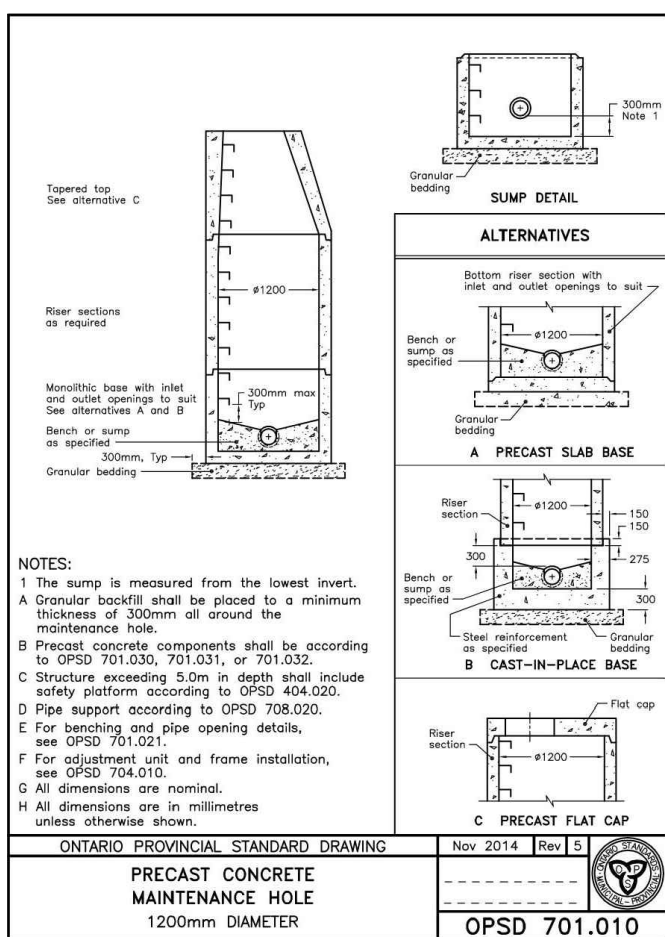
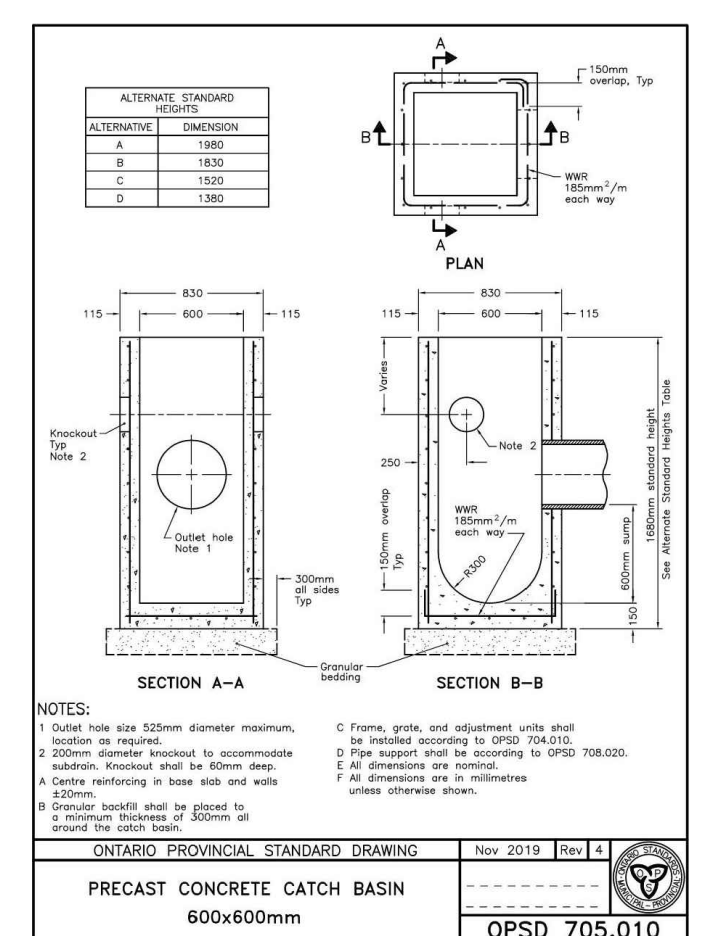
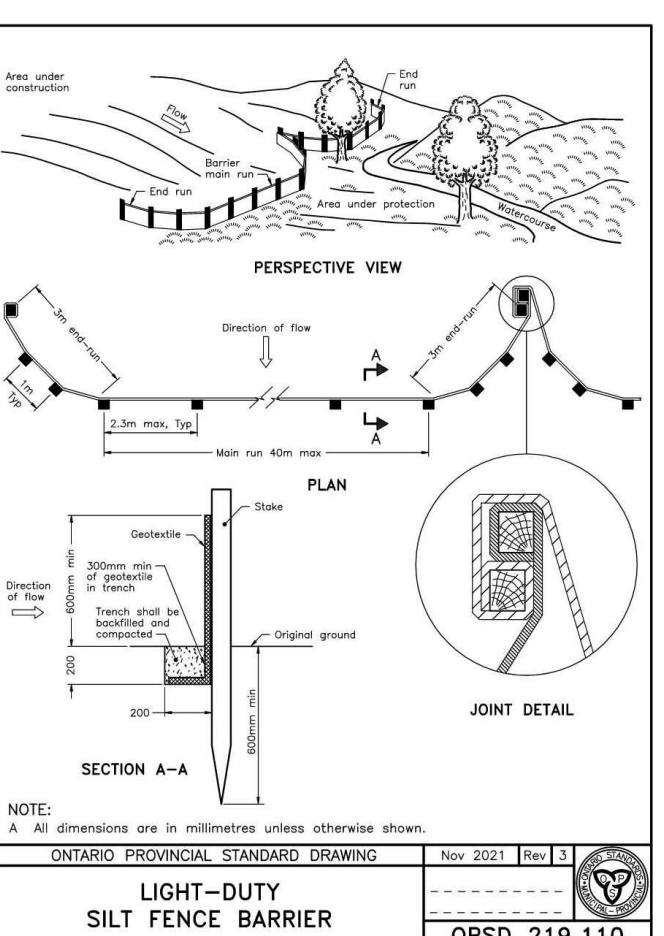
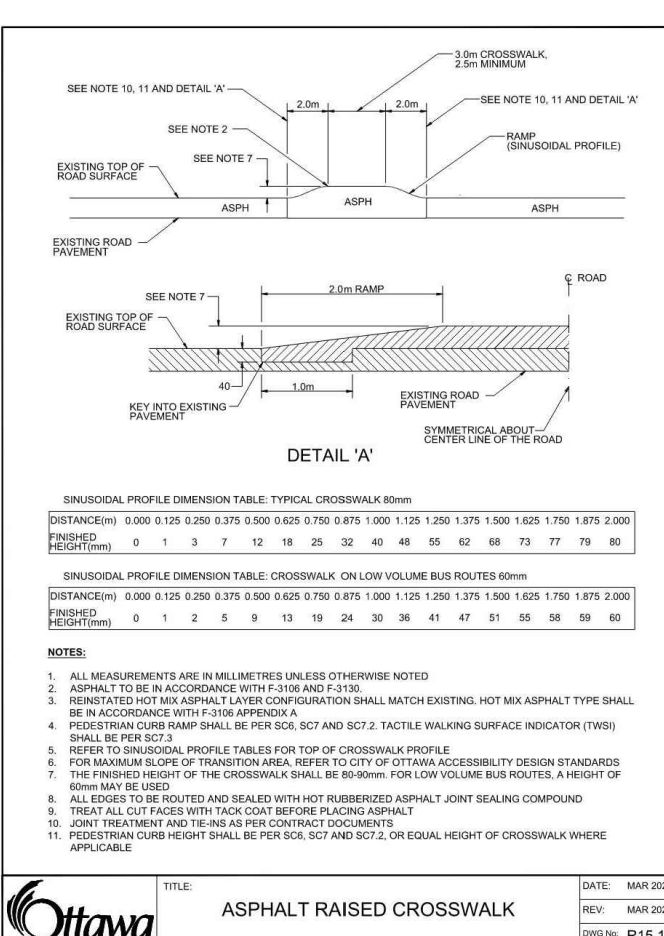
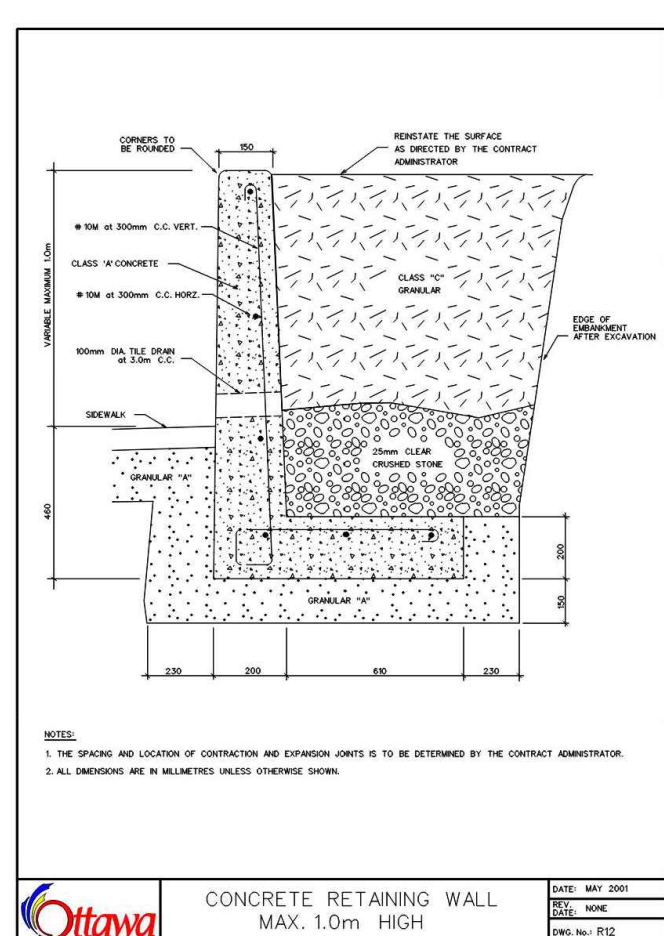
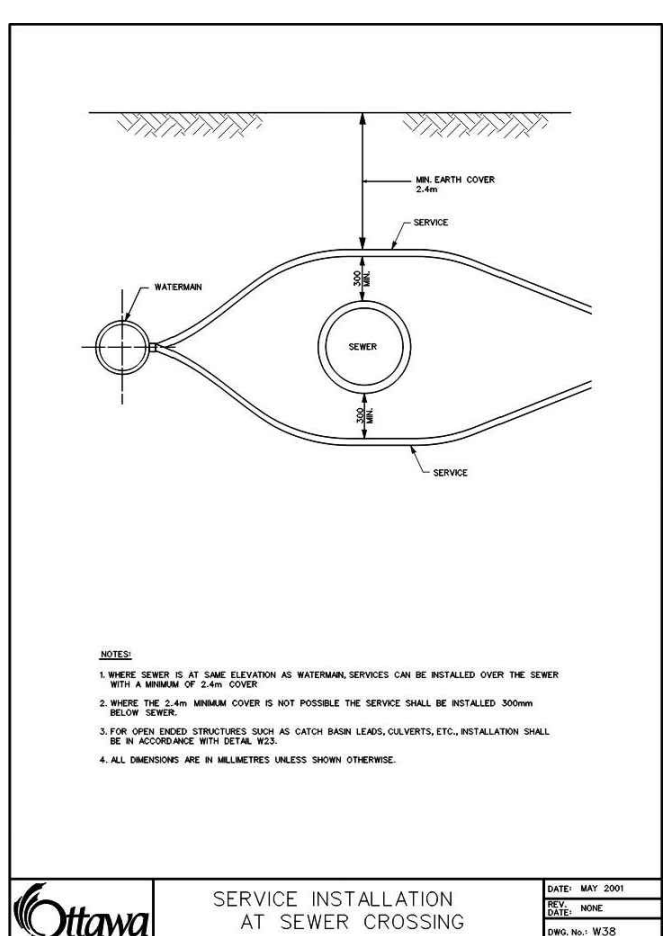
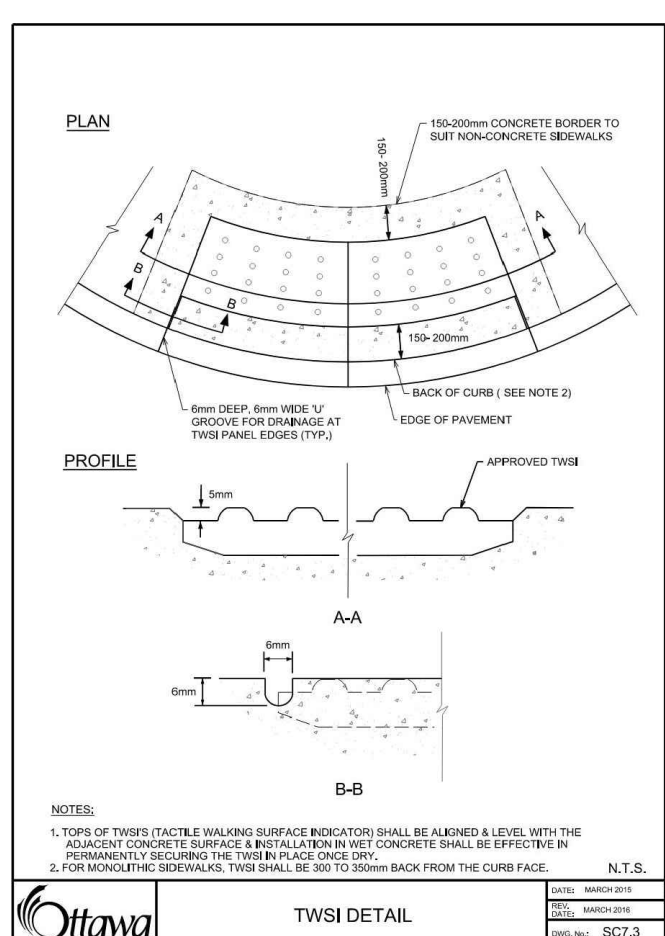
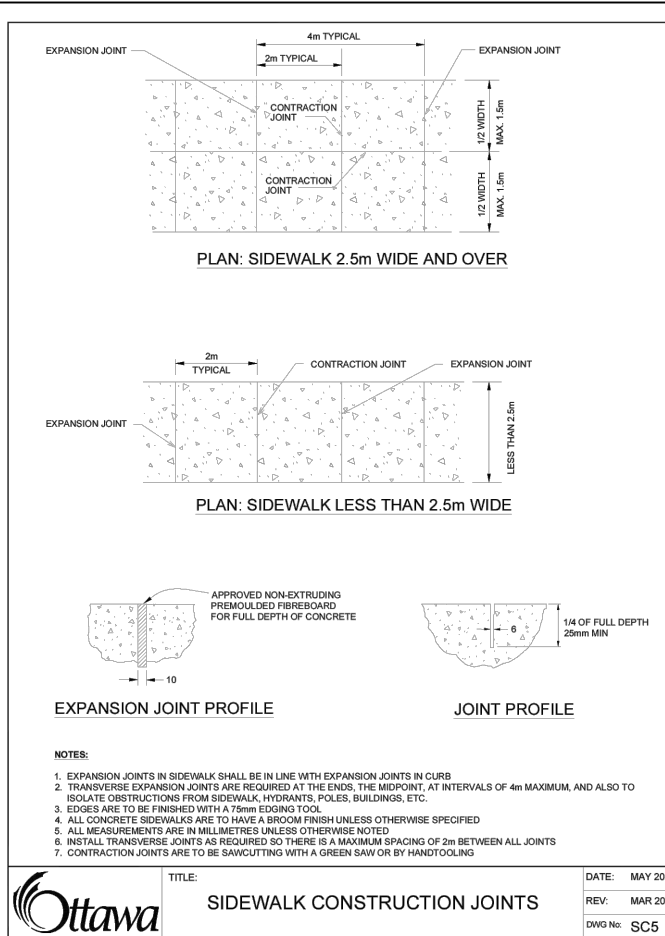
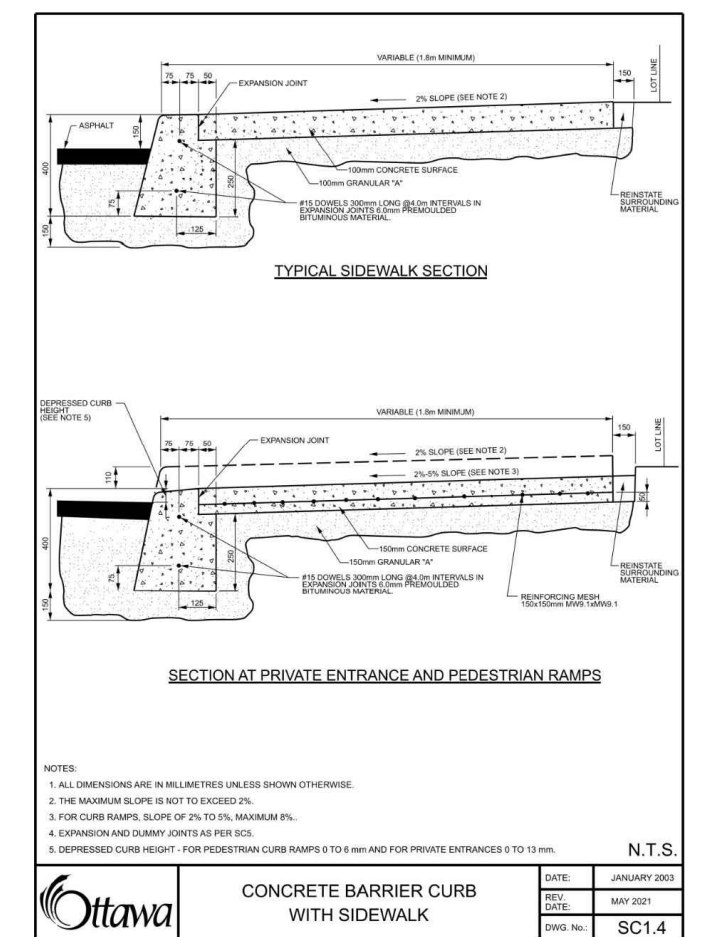
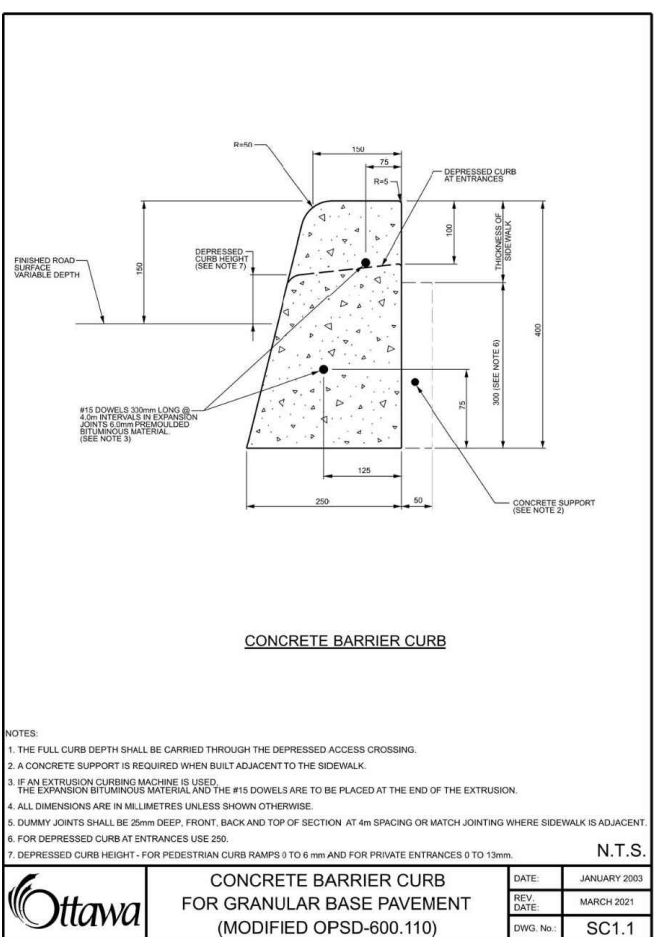
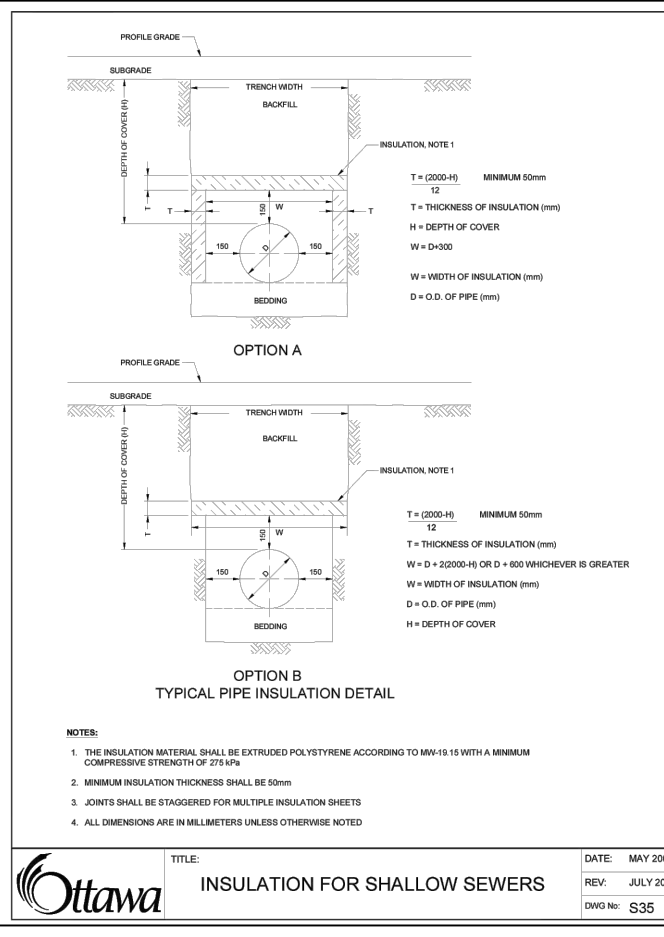
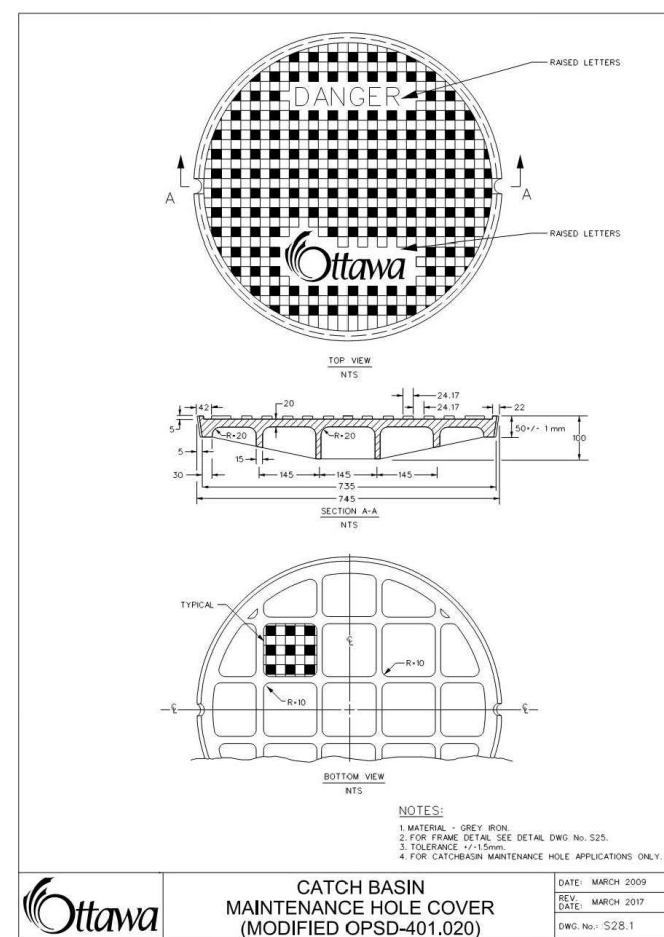
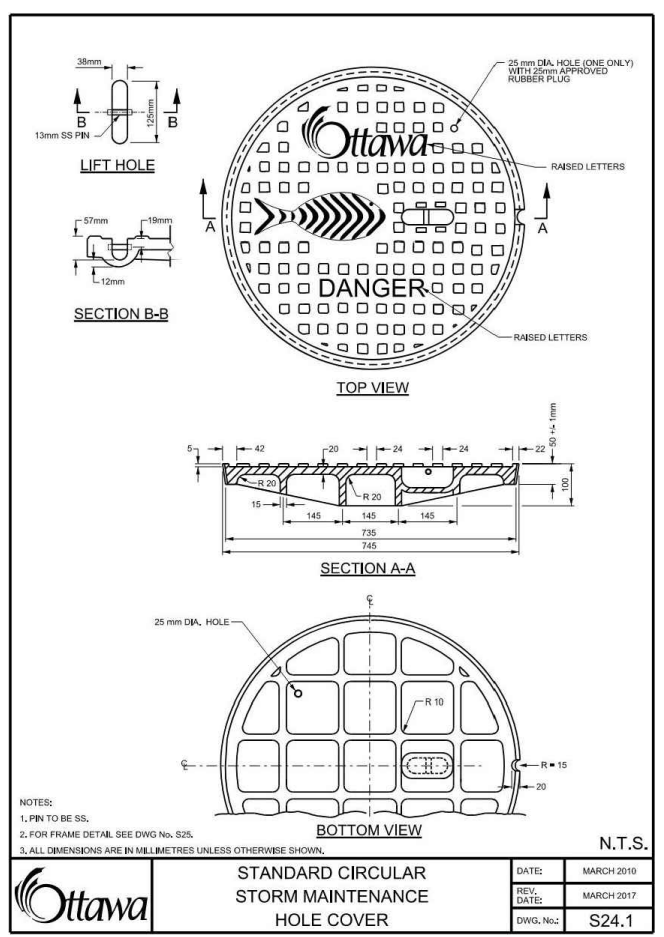
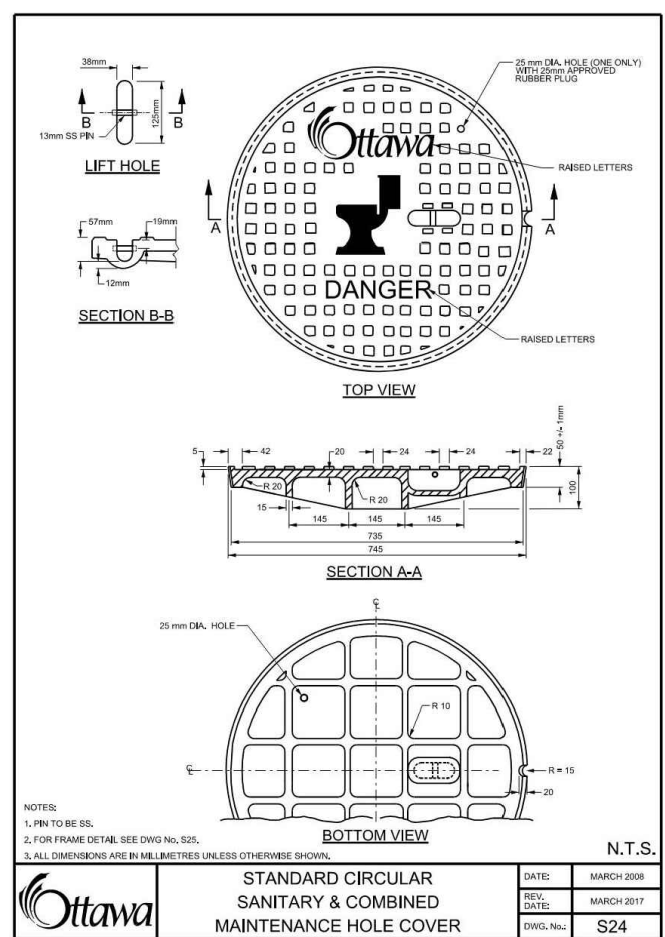
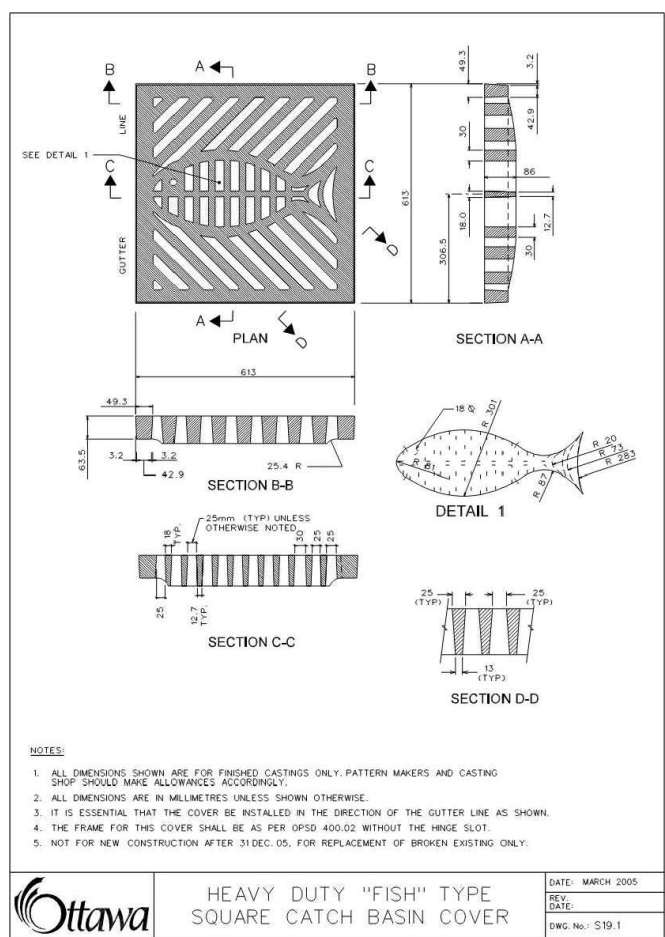
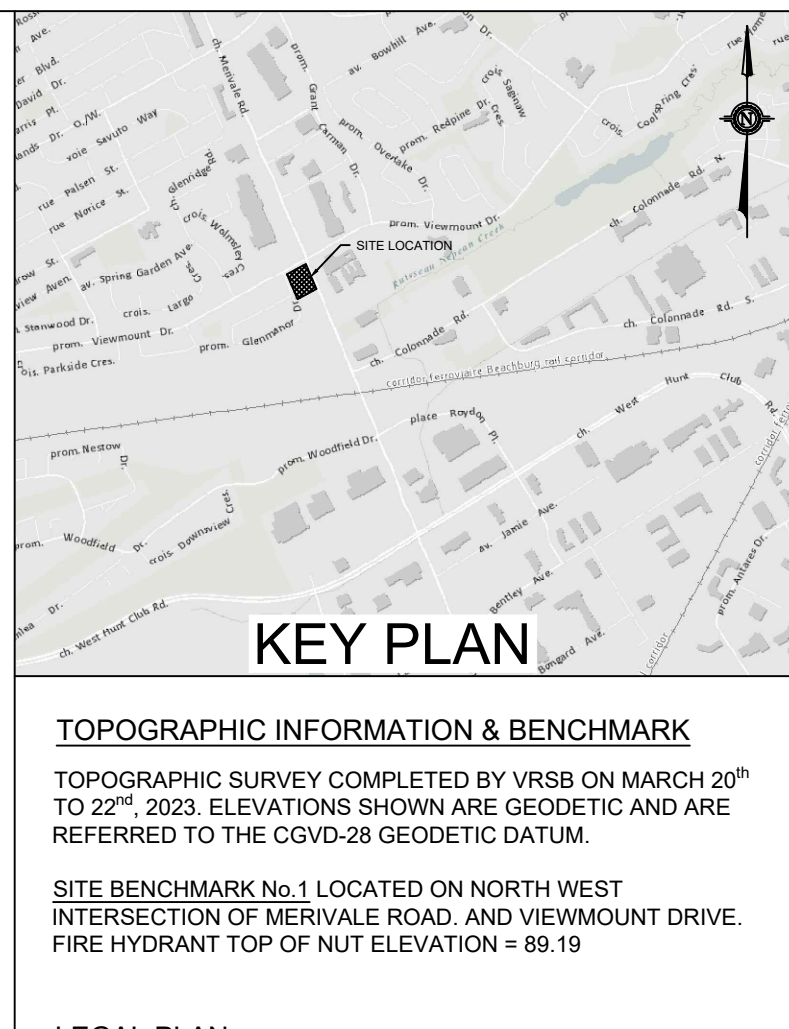
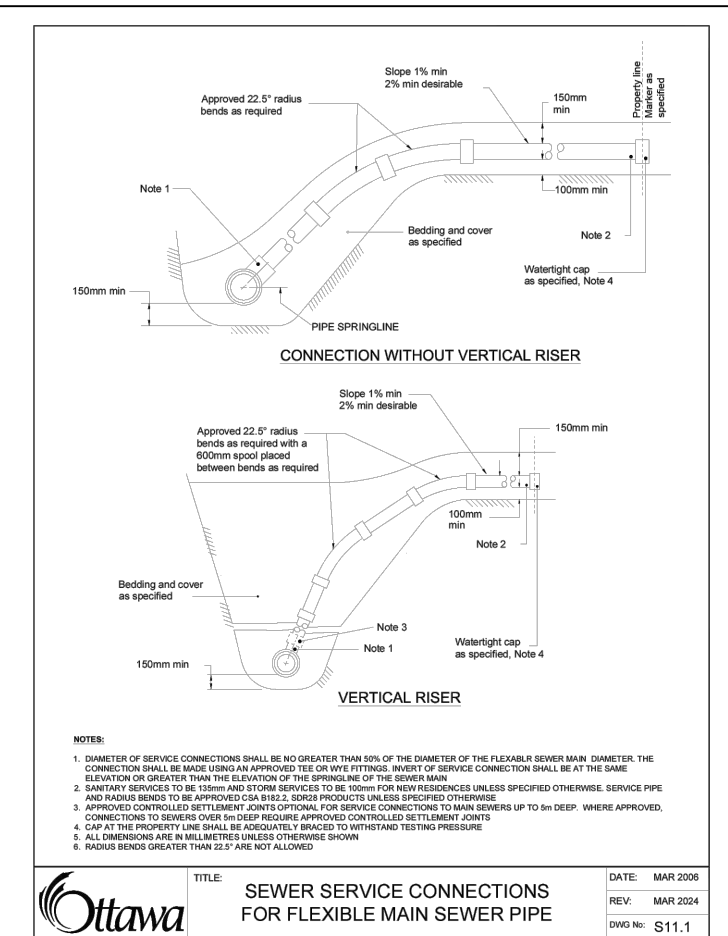
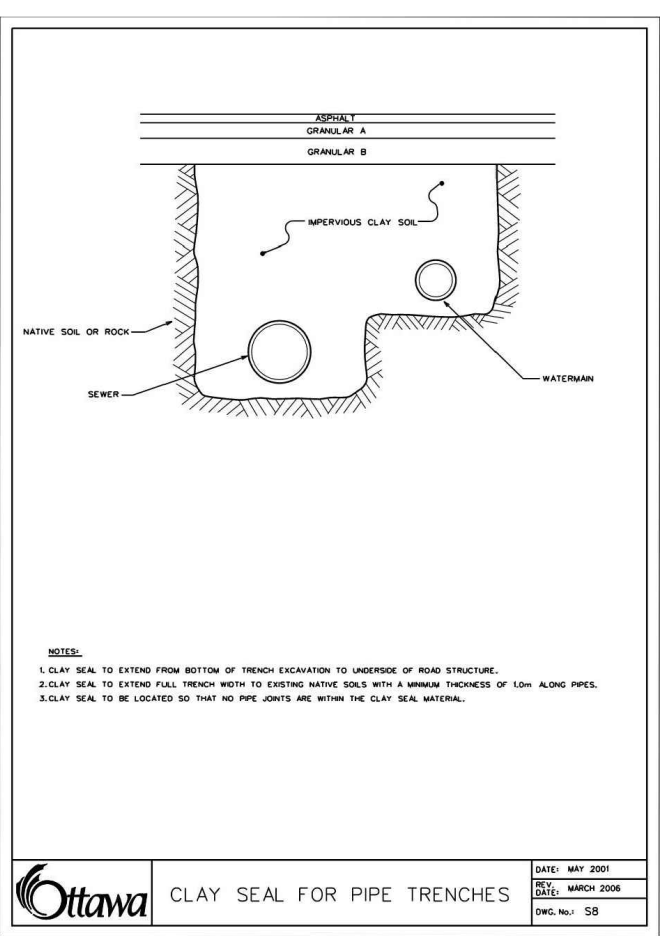
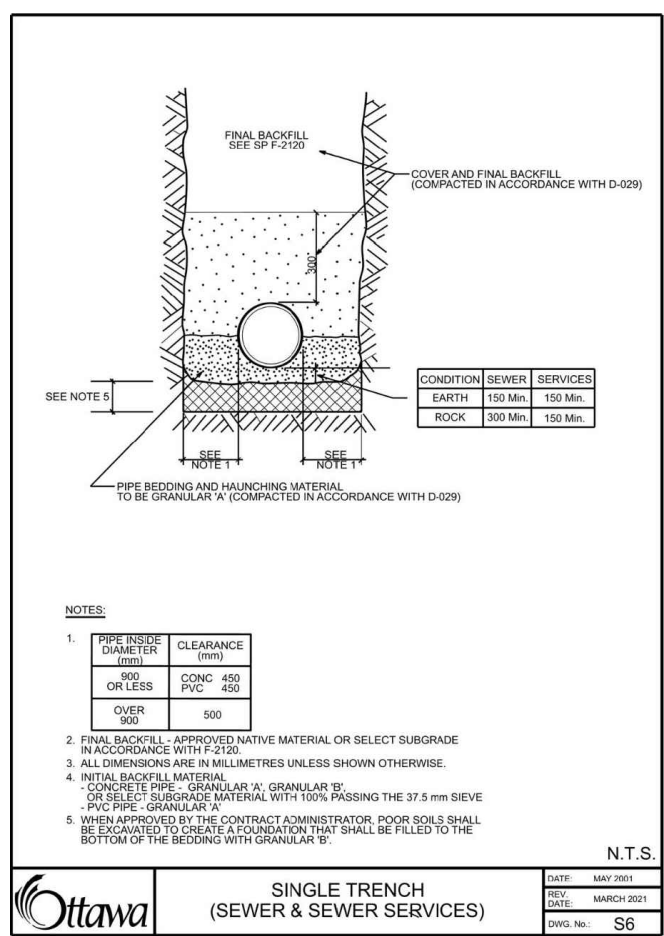
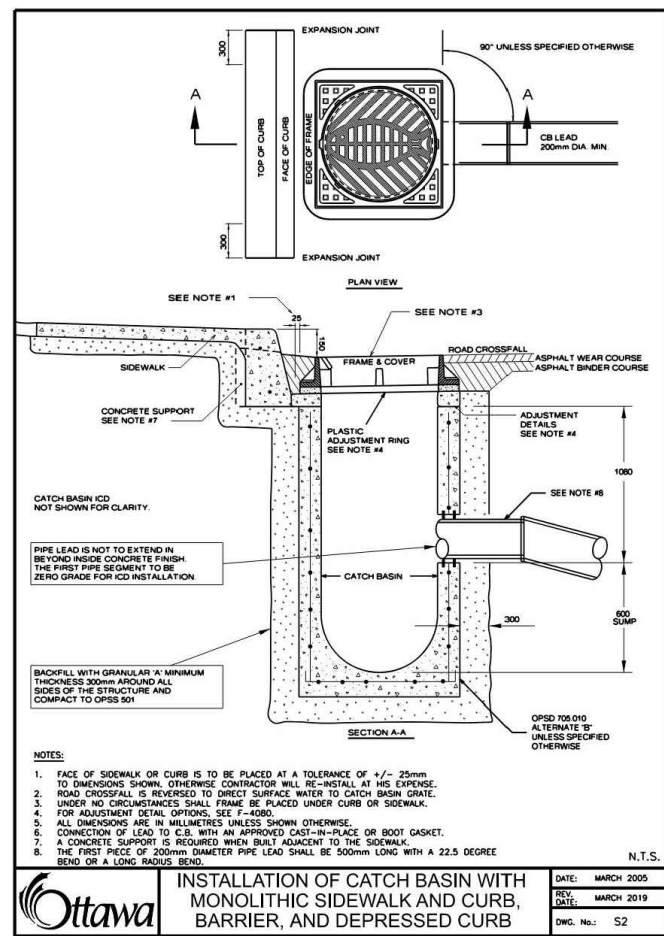
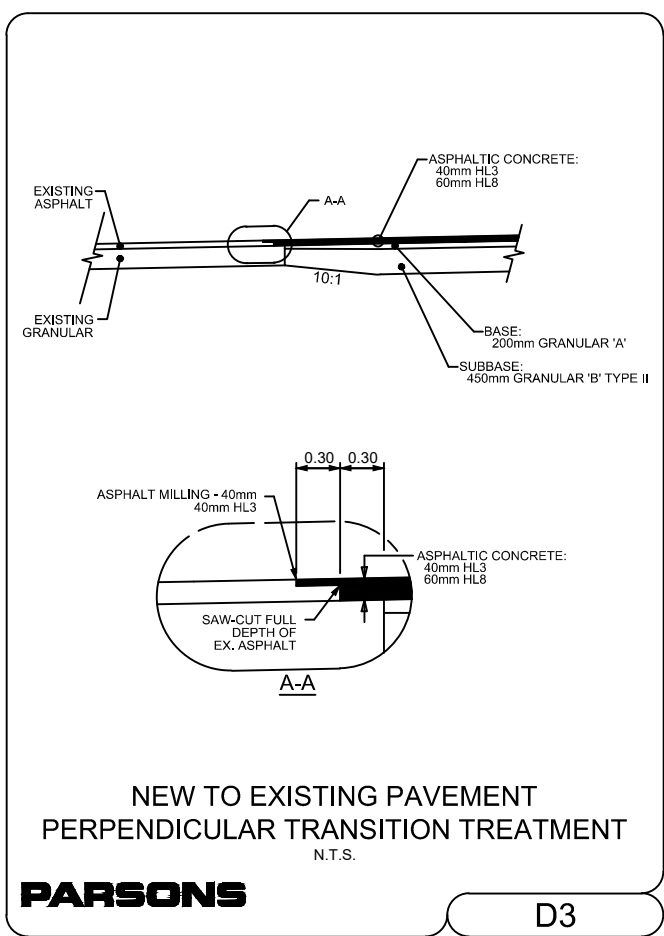
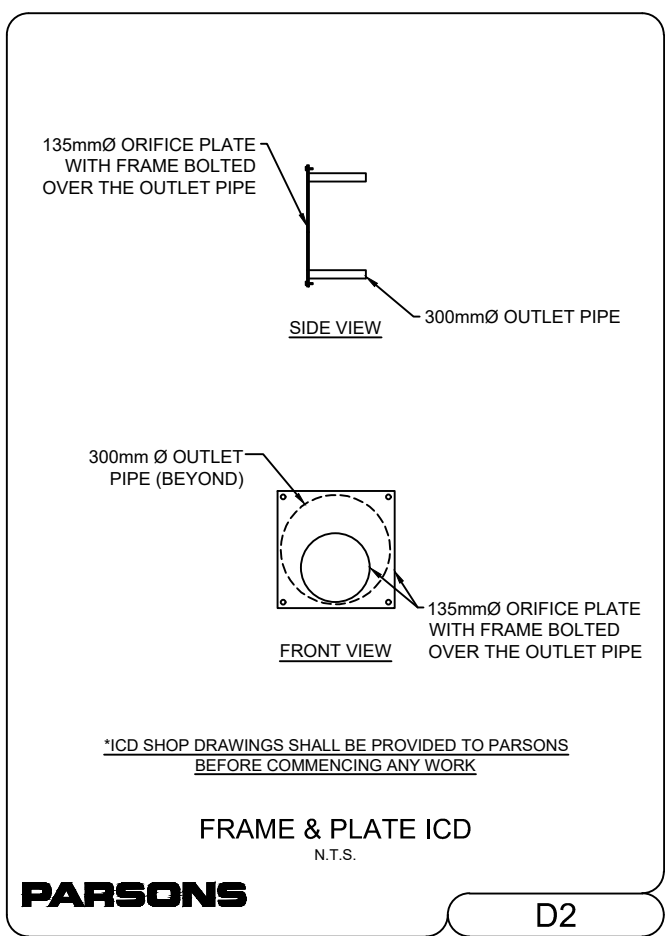
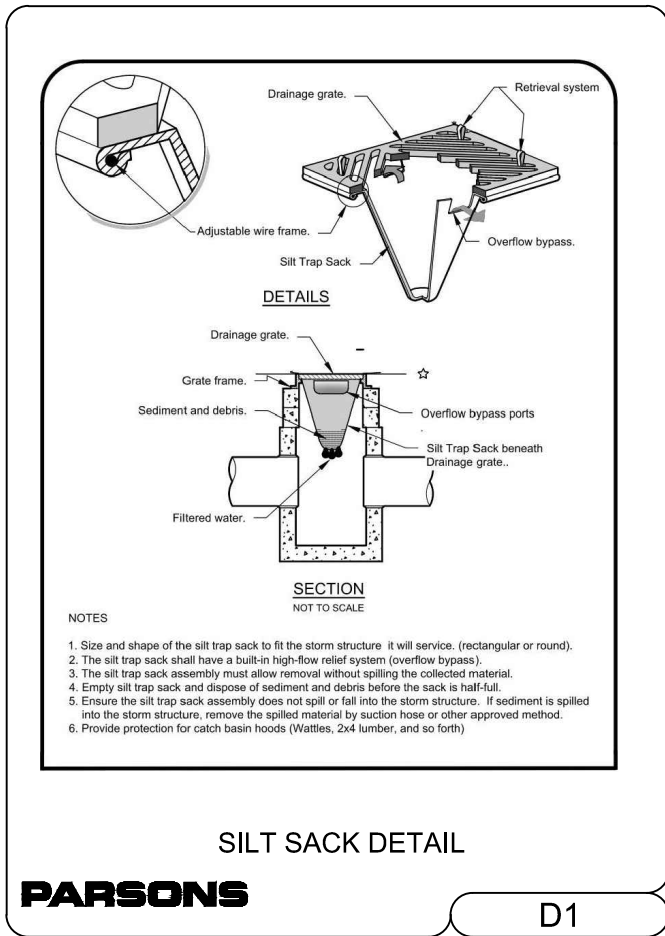
**HARNOIS ÉNERGIES**

**PROJECT**  
**CONVENIENCE STORE/RESTO**  
**1660 MERIVALE**  
**NEPEAN, ONTARIO**

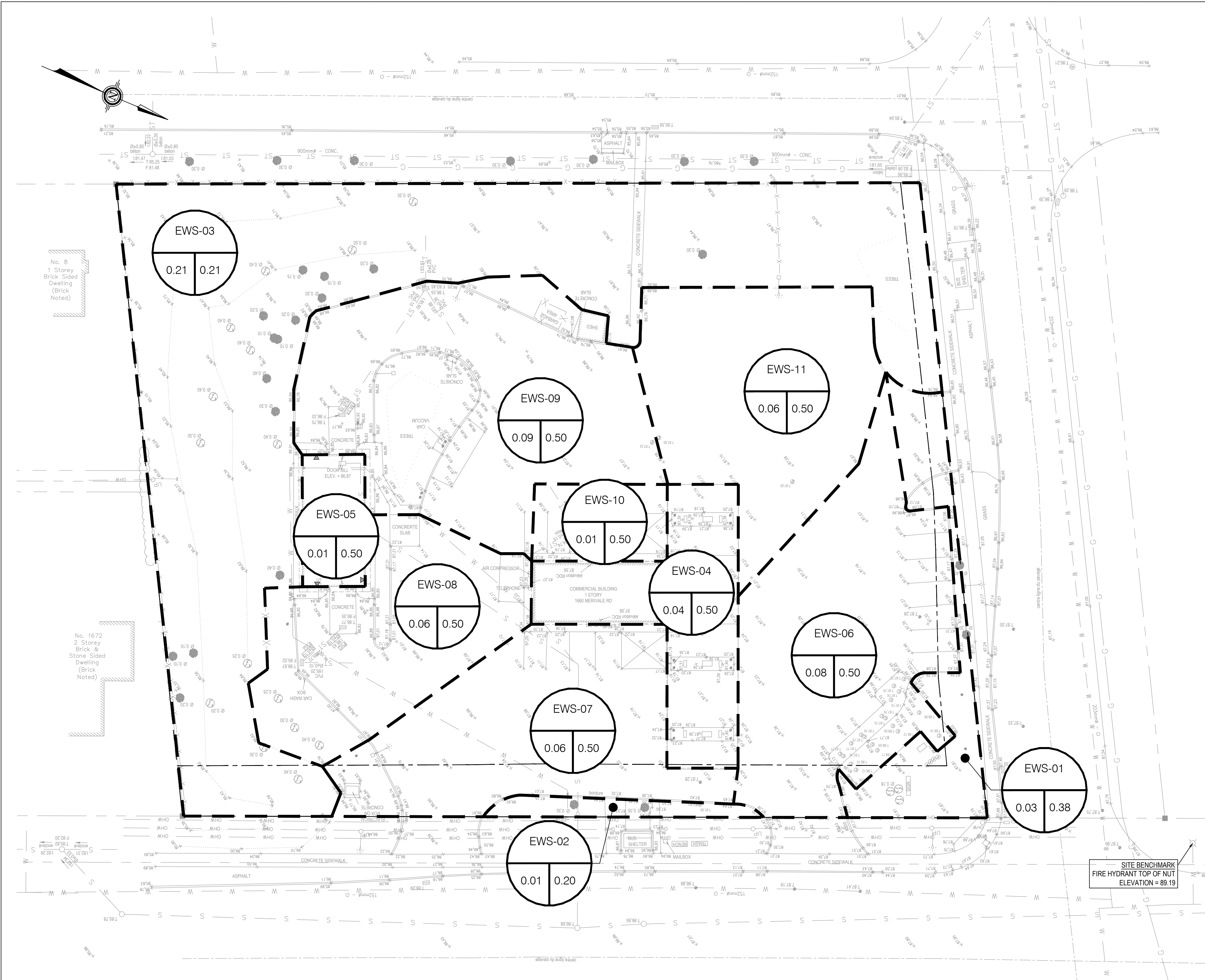
**GRADING PLAN**

DESIGNED BY	P.C.	PROJECT NO.	478684
DRAWN BY	P.C.		
CHECKED BY	M.T.	C-103	GR
DATE	MAY 2025		
SCALE	1:250	DRAWING NO.	DRAWING

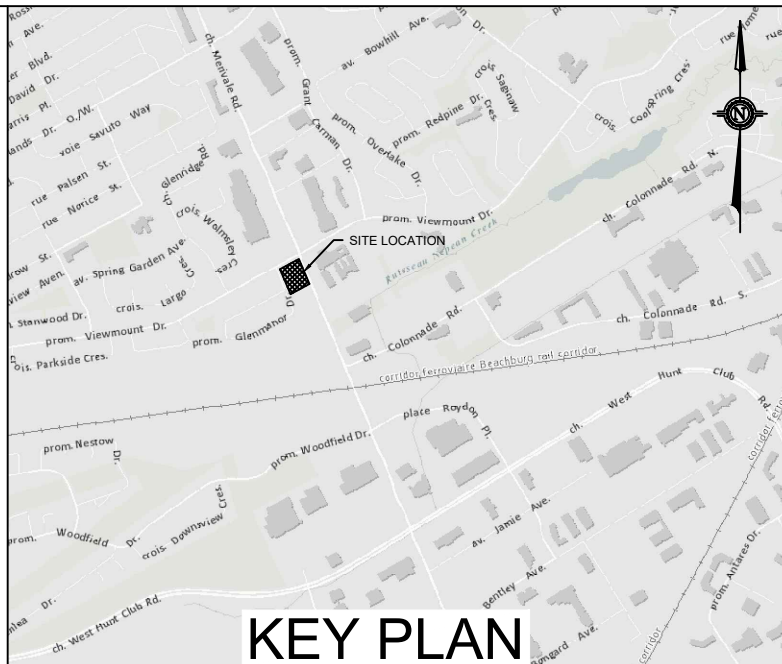
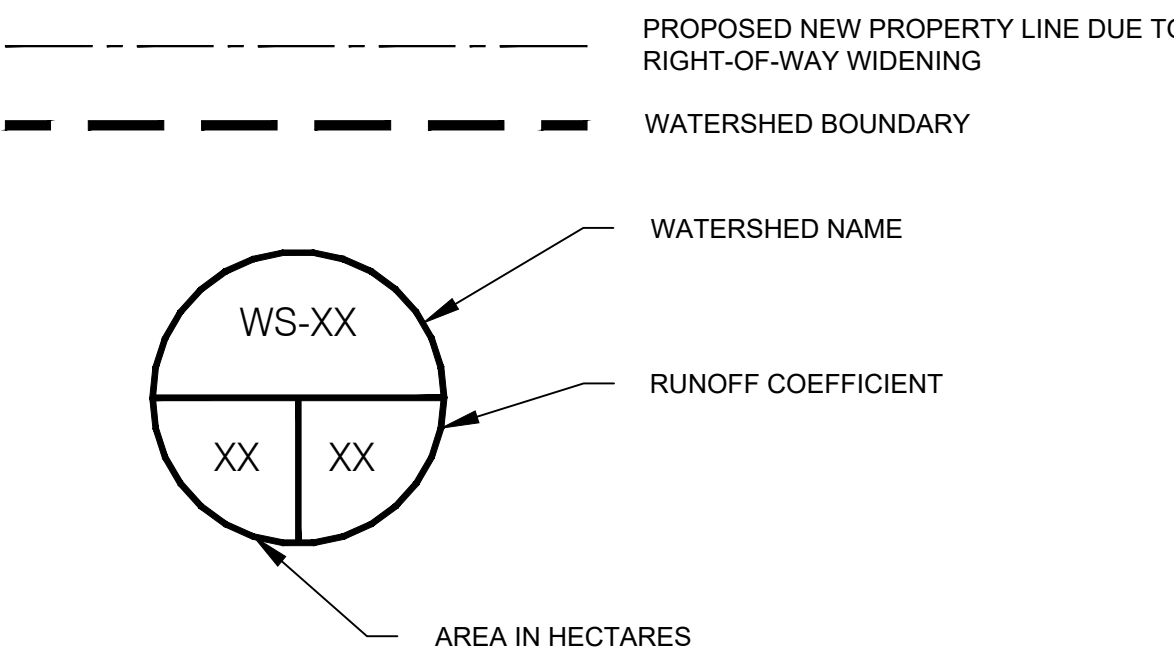








LEGEND:



TOPOGRAPHIC INFORMATION & BENCHMARK

TOPOGRAPHIC SURVEY COMPLETED BY VRSB ON MARCH 20<sup>th</sup> TO 22<sup>nd</sup>, 2023. ELEVATIONS SHOWN ARE GEODETIC AND ARE REFERRED TO THE CGVD-28 GEODETIC DATUM.

SITE BENCHMARK No. 1 LOCATED ON NORTH WEST INTERSECTION OF MERIVALE ROAD, AND VIEWMOUNT DRIVE. FIRE HYDRANT TOP OF NUT ELEVATION = 89.19

LEGAL PLAN

LEGAL SURVEY COMPLETED BY FARLEY, SMITH & DENIS SURVEYING LTD. ON APRIL 21<sup>st</sup>, 2023. BEARINGS ARE ASTRONOMIC AND ARE REFERRED TO THE WESTERLY LIMIT OF MERIVALE ROAD HAVING A BEARING OF N 22° 18' 30" W AS SHOWN ON REGISTERED PLAN 401392.

No.	DATE	DESCRIPTION	BY
05	2025-12-18	ISSUED FOR SPA - REV04	M.T.
04	2025-09-05	ISSUED FOR SPA - REV03	M.T.
03	2025-04-01	ISSUED FOR SPA - REV02	M.T.
02	2025-02-19	ISSUED FOR SPA - REV01	M.T.
01	2024-03-21	ISSUED FOR SPA	M.T.

REVISIONS

12/18/2025	
------------	--

PROVINCE OF ONTARIO



**PARSONS**

1223 Michael Street, Suite 100, Ottawa, Ontario, Canada K1J 7T2  
Tel: (613) 738-4160 Fax: (613) 739-7105

CLIENT

**HARNOIS ÉNERGIES**

PROJECT

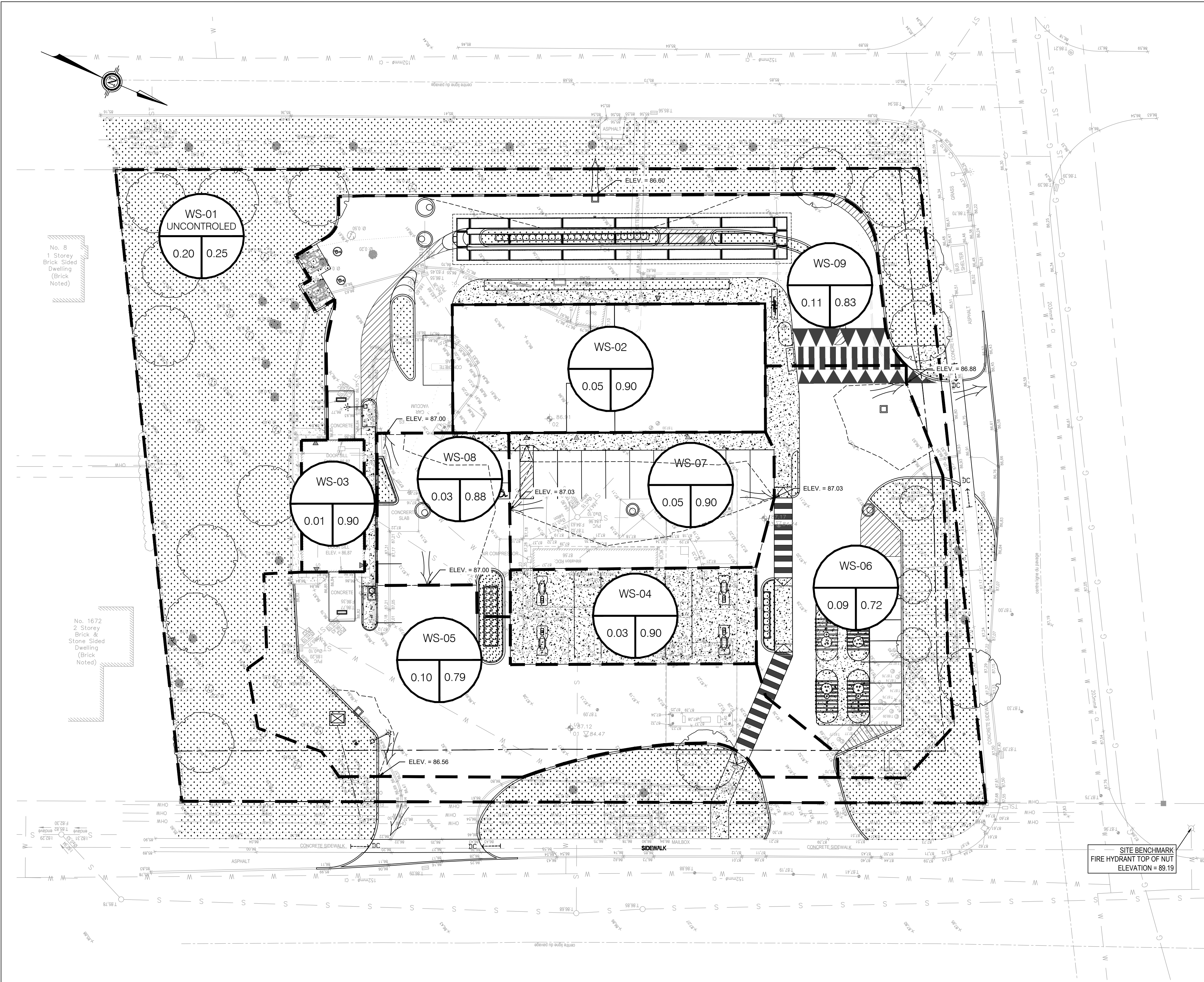
**CONVENIENCE STORE/RESTO  
1660 MERIVALE  
NEPEAN, ONTARIO**

TITLE

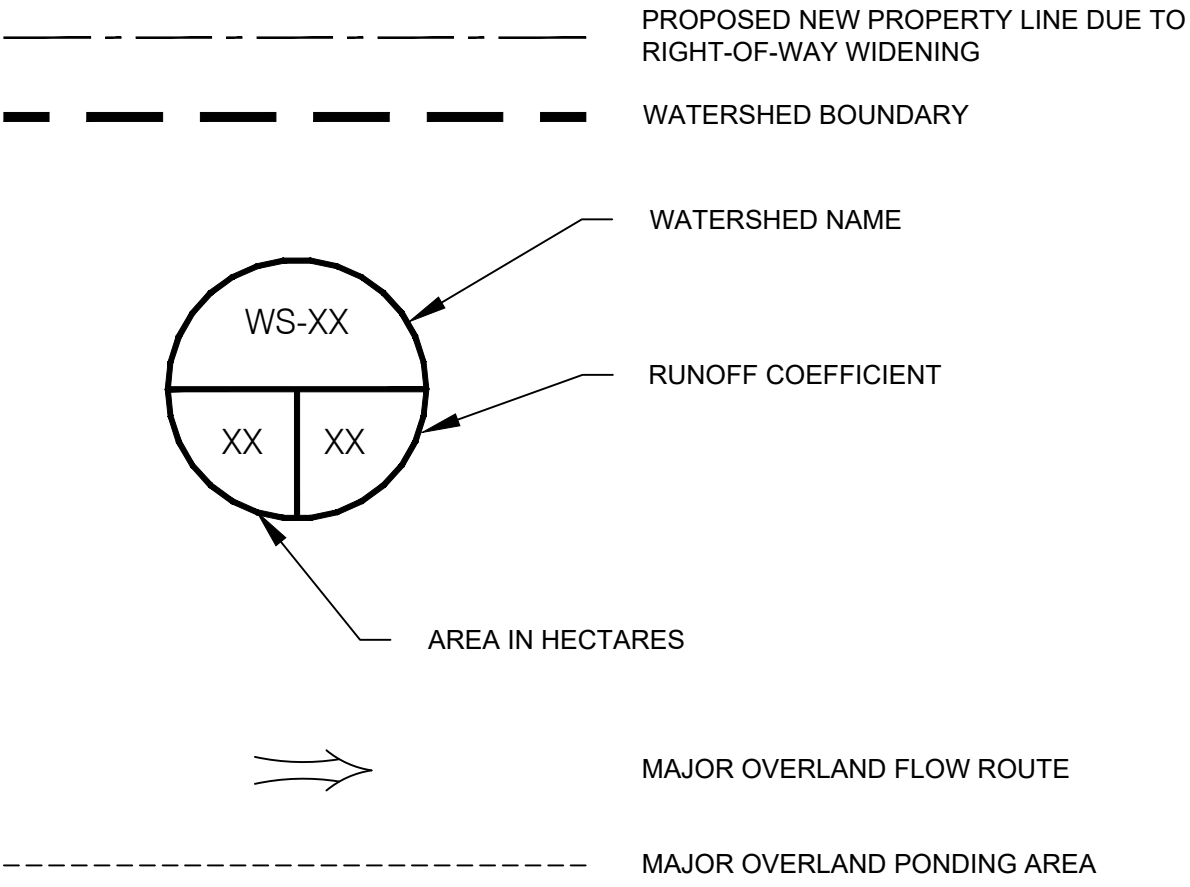
**PRE DEVELOPMENT  
DRAINAGE AREAS**

DESIGNED BY	P.C.	PROJECT NO.	478684
DRAWN BY	P.C.	C105	PRE
CHECKED BY	M.T.		
DATE	MAY 2025		
SCALE	1:250	DRAWING NO.	DRAWING

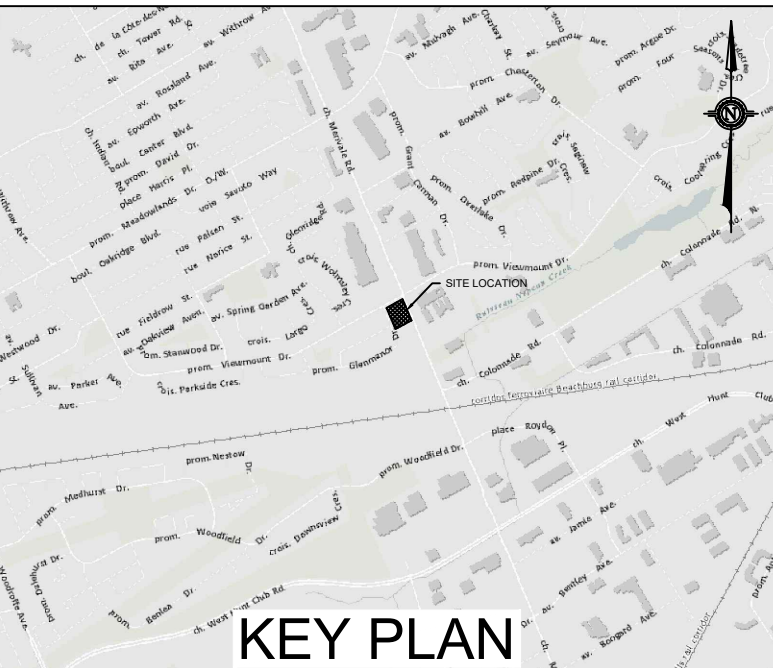




LEGEND:



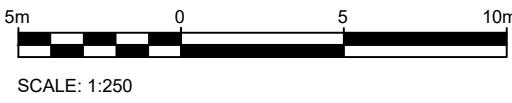
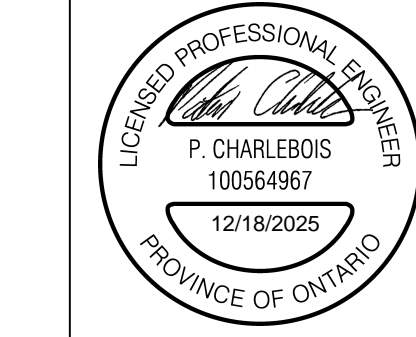
NOTE: ALL STORM EVENTS UP TO 100YEARS ARE STORED IN UNDERGROUND STORAGE. NO SURFACE PONDING OCCURS.



**TOPOGRAPHIC INFORMATION & BENCHMARK**  
TOPOGRAPHIC SURVEY COMPLETED BY VR8B ON MARCH 20<sup>th</sup> TO 22<sup>nd</sup>, 2023. ELEVATIONS SHOWN ARE GEODETIC AND ARE REFERRED TO THE CGVD-28 GEODETIC DATUM.  
  
SITE BENCHMARK No.1 LOCATED ON NORTH WEST INTERSECTION OF MERIVALE ROAD, AND VIEWMOUNT DRIVE. FIRE HYDRANT TOP OF NUT ELEVATION = 89.19

**LEGAL PLAN**  
LEGAL SURVEY COMPLETED BY FARLEY, SMITH & DENIS SURVEYING LTD. ON APRIL 21<sup>st</sup>, 2023. BEARINGS ARE ASTRONOMIC AND ARE REFERRED TO THE WESTERLY LIMIT OF MERIVALE ROAD HAVING A BEARING OF N 22° 18' 30" W AS SHOWN ON REGISTERED PLAN 401392.

No.	DATE	DESCRIPTION	BY
05	2025-12-18	ISSUED FOR SPA - REV04	M.T.
04	2025-09-05	ISSUED FOR SPA - REV03	M.T.
03	2025-04-01	ISSUED FOR SPA - REV02	M.T.
02	2025-02-19	ISSUED FOR SPA - REV01	M.T.
01	2024-03-21	ISSUED FOR SPA	M.T.



1223 Michael Street, Suite 100, Ottawa, Ontario, Canada K1J 7T2  
Tel: (613) 738-4160 Fax: (613) 739-7105

CLIENT  
**HARNOIS ÉNERGIES**

PROJECT  
**CONVENIENCE STORE/RESTO  
1660 MERIVALE  
NEPEAN, ONTARIO**

TITLE <b>POST DEVELOPMENT DRAINAGE AREAS</b>	
DESIGNED BY P.C.	PROJECT NO. 478684
DRAWN BY P.C.	C106 POST
CHECKED BY M.T.	
DATE MAY 2025	
SCALE 1:250	DRAWING NO. DRAWING