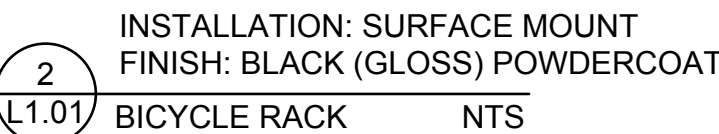


CODE	BOTANICAL NAME	COMMON NAME	QTY.	SIZE	REMARKS / (N) NATIVE
<b>DECIDUOUS TREES</b>					
AFJ	ACER FREEMANII JEFFERSRED	AUTUMN MAPLE	5	50mm cal	B&B, single-stem / N
AR	ACER RUBRUM	RED MAPLE	2	50mm cal	B&B, single-stem / N
QM	QUERCUS MACROCARPA	BUR OAK	1	50mm cal	B&B, single-stem / N
QR	QUERCUS RUBRA	RED OAK	2	50mm cal	B&B, single-stem / N
SR	SYRINGA RETICULATA IVORY SILK	IVORY SILK JAPANESE TREE LILAC	3	50mm cal	B&B, single-stem
<b>CONIFEROUS TREES</b>					
PG	PICEA PUNGENS GLAUCA	WHITE SPRUCE	7	200 cm ht	B&B / N
PS	PINUS STROBUS	WHITE PINE	5	200 cm ht	B&B / N
<b>SHRUBS</b>					
JSW	JUNIPERUS SCOPULORUM 'WICHITA BLUE'	WICHITA BLUE JUNIPER	8	200cm ht	B&B, 120cm o/c
PFM	POTENTILLA FRUTICOSA GOLD DROP	GOLD DROP CINQUEFOIL	5	50cm ht	potted, 80cm o/c
PN	PINUS MUGO MUGHUS	MUGHO PINE	10	50cm ht	potted, 100cm o/c
PO	PHYSCARPUS OPULIIFOLIUS	COMMON NINEBARK	7	50cm ht	potted, 100cm o/c / N
<b>PERENNIALS</b>					
Ech	ECHINACEA PURPUREA	PURPLE CONEFLOWER	56	15 cm pot	plant 60cm o/c / N
Edh	HELMEROGALLIS 'Hyperion'	Hyperion DAYLILY	40	15 cm pot	plant 60cm o/c
Rud	RUDECKIA incisa	CUTTLE CRAW FLOWER	73	15 cm pot	plant 60cm o/c / N
<b>ORNAMENTAL GRASSES</b>					
Cal	CALAMAGROSTIS x acutiflora Karl Foerster	KARL FOERSTER REED GRASS	23	15cm pot	plant 75cm o/c
Pv	PANICUM virgatum	SWITCH GRASS	54	15 cm pot	plant 75cm o/c / N
Sp	SPOROBOLUS heterolepis	PRAIRIE DROPSEED	39	15cm pot	plant 75cm o/c / N



This drawing shall be read in conjunction with all relevant Architectural, Engineering and related Drawings and Documents.

Refer to Engineering Drawings for Grading and Servicing.

Refer to Architectural Drawings for Site Layout.

Contractor shall provide the location(s) of the service/utilities by consulting Municipal Authorities and Utility companies and shall be responsible for adequate protection from damage during construction.

Plant shall be No. 1 Grade and shall comply with the Metric Guide Specifications For Nursery Stock (latest edition), published by the Canadian Nursery Trades Association.

Plant Material locations are **Schematic / Approximate only**. Contractor shall state locations on site prior to work.

Contractor shall guarantee all plant material for a period of one (1) full year from the date of final acceptance.

**Shrubs** shall be planted in a continuous prepared bed of 450mm depth planting soil mix covered over with a woven polypropylene weed control fabric (**LANDSCAPE FABRIC- Green Line by Thrace-LINQ**) and 75mm depth composted pine mulch to finish grade, as specified

**Perennials and Ornamental Grasses** shall be planted in a continuous prepared bed of 450mm depth planting soil mix covered over with 75mm depth composted pine mulch to finish grade (**NO WEED CONTROL FABRIC**), as specified

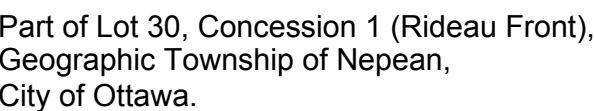
Sod areas to receive 125mm topsoil. Sod shall be No. 1 quality conforming to the Canadian Nursery Sod Growers Specification.

Reinstatement of areas damaged or disturbed beyond the limit of Work.

Plant Material substitutions shall not be permitted without written approval from the Consultant.

Contractor shall advise Consultant a minimum of **48hrs.** prior to proceeding landscape work and any required **Drawings**.

**THIS PLAN HAS BEEN PREPARED FOR MUNICIPAL SITE PLAN APPROVAL ONLY AND MAY NOT BE USED FOR ANY OTHER PURPOSE.**



Drawn	MGB	Date	MAR. 2024	Drawing No. <b>L1.01</b>
Scale	1:250	Project No.	1226	