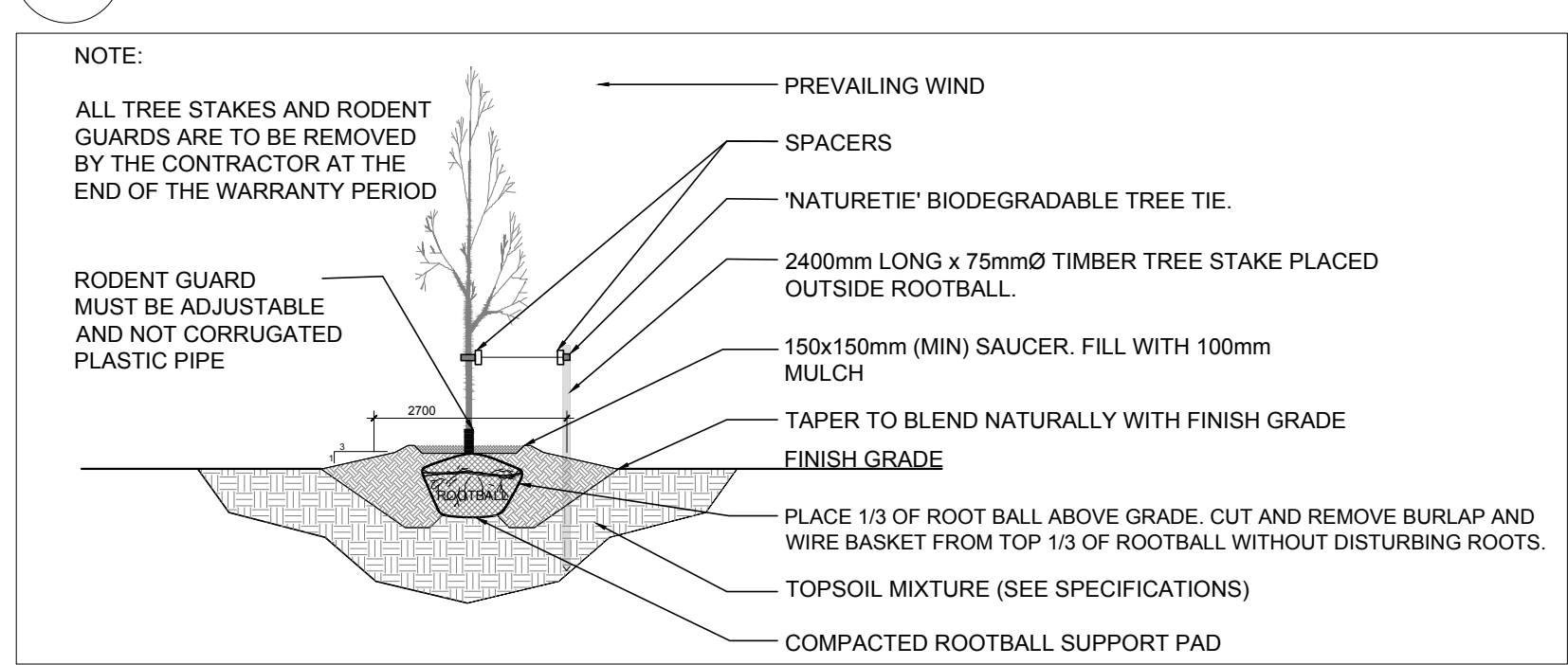
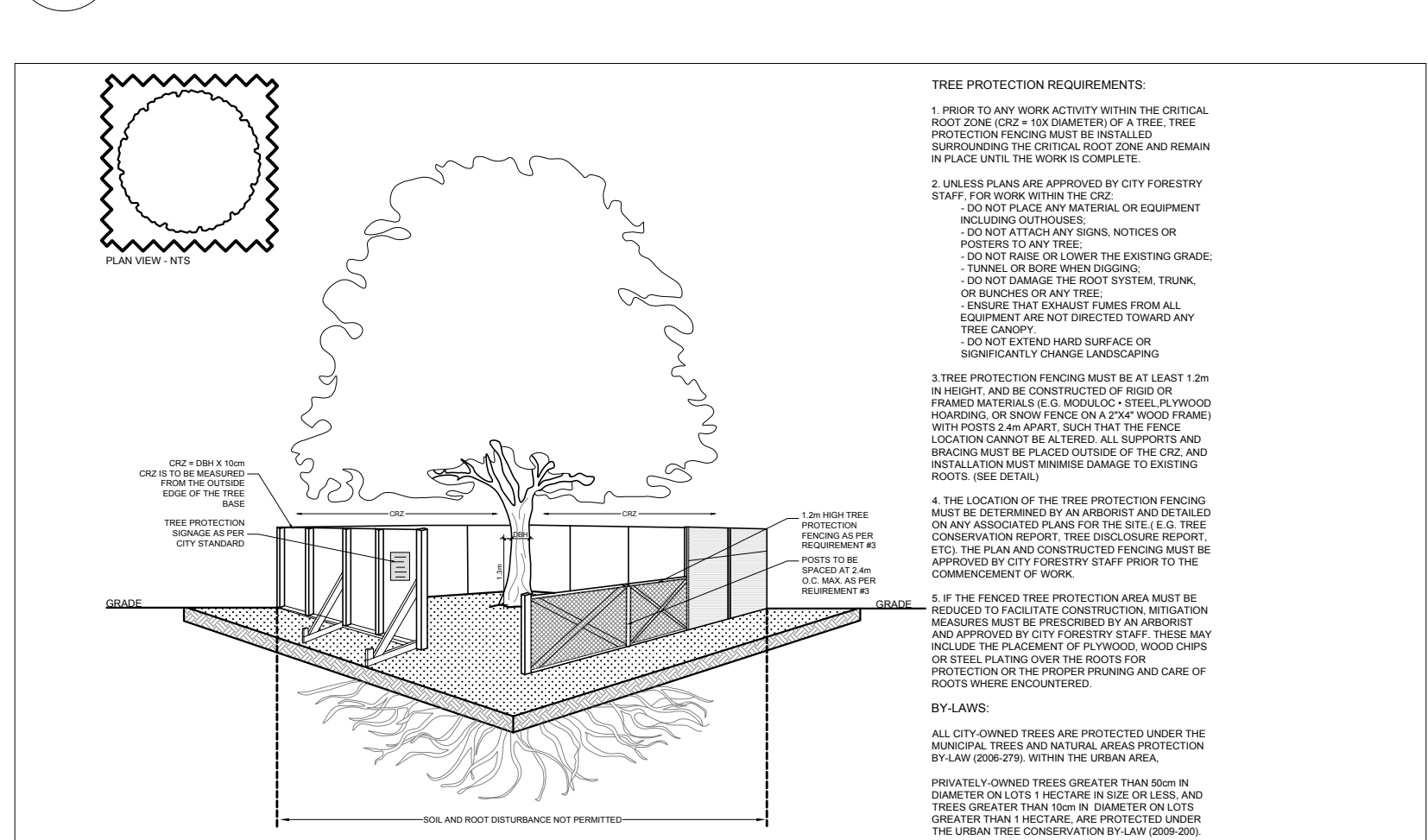


1 LANDSCAPE PLAN  
L1 SCALE: 1:400



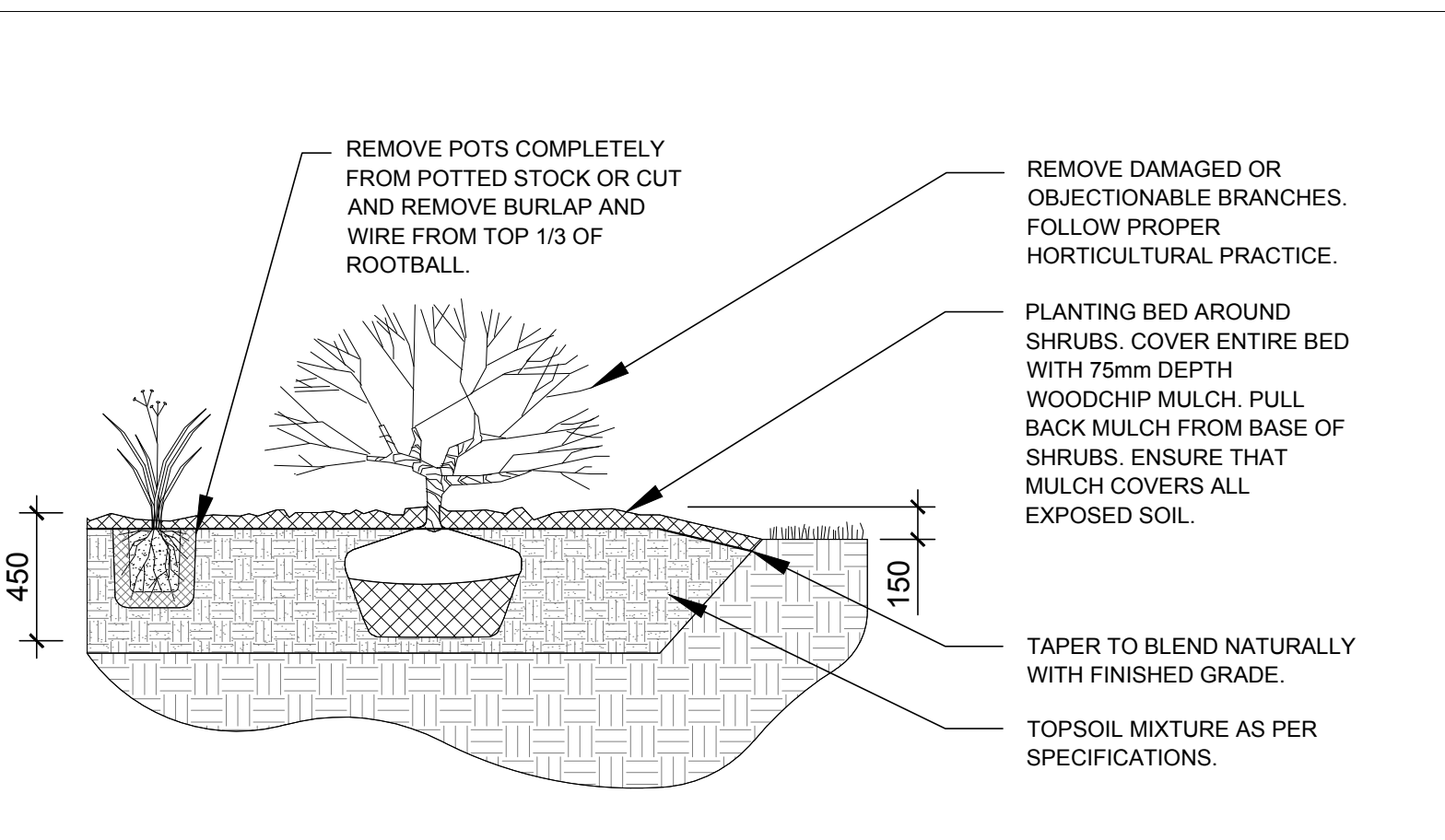
2 DECIDUOUS TREE PLANTING  
L1 SCALE: NTS



3 TREE PROTECTION FENCE  
L1 SCALE: NTS

GENERAL NOTES:

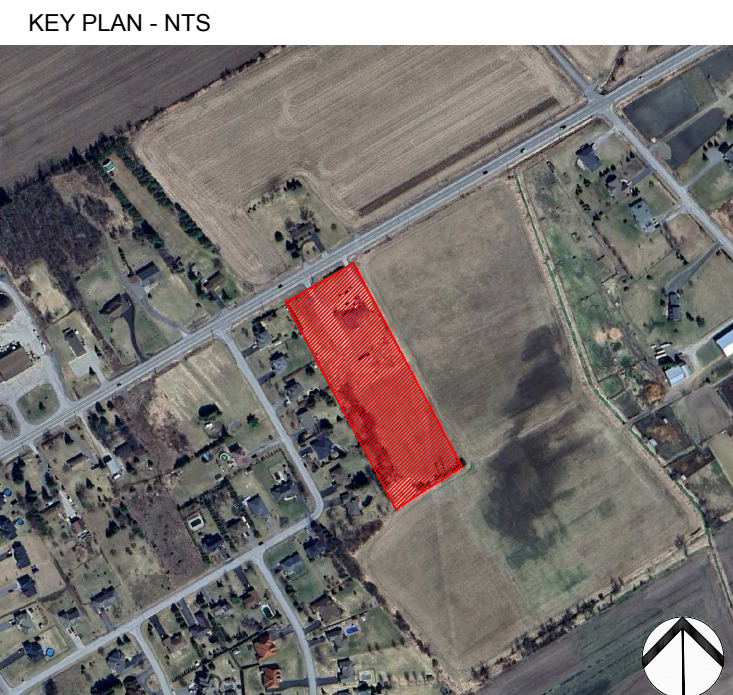
- It is the responsibility of the appropriate contractor or official to report any errors, omissions or discrepancies on this plan with actual site conditions to the Landscape Architect before proceeding with construction.
- The contractor is to notify all utility companies and authorities prior to any excavation and ascertain locations of underground services.
- The contractor is to reinstate all areas and items damaged as a result of construction activity.
- The contractor is to comply with all pertinent codes and by-laws.
- The contractor is to maintain a positive surface run-off throughout the entire construction period.
- The Landscape Architect is not responsible for subsurface conditions.
- The contractor is to identify all existing trees to remain on site with the Landscape Architect prior to construction.
- The contractor is to stake the proposed location of all plant material in conjunction with the Landscape Architect prior to excavation.
- Minimum distances for selected deciduous trees are as follows:
  - Building Foundations 7.5m
  - Sidewalks 1.5m
  - Public Streets 2.5m
  - Underground Infrastructure 1.5m
- All trees within 1m of underground utility trenches are to be excavated by hand.
- Remove all protective wrapping from tree trunks after installation.
- Staking of trees shall only be performed if necessary.
- Ensure that mulch is pulled back a min. distance of 75mm from base of tree trunk.



4 SHRUB / ORNAMENTAL GRASS PLANTING  
L1 SCALE: NTS

PROPOSED PLANT LIST						
KEY	QTY.	BOTANICAL NAME	COMMON NAME	SIZE	CONDITION	REMARKS
TREES						
BW	1	Tilia americana	Basswood	50mm cal.	B&B	
HB	1	Celtis occidentalis	Hackberry	50mm cal.	B&B	
RM	1	Acer rubrum	Red Maple	50mm cal.	B&B	
SB	1	Amelanchier canadensis	Shadbowl Serviceberry	50mm cal.	B&B	
SF	1	Amelanchier laevis 'JFS-ARB'	Spring Flurry Serviceberry	50mm cal.	B&B	
SM	1	Acer saccharum	Sugar Maple	50mm cal.	B&B	
WB	3	Betula papyrifera	White Birch	50mm cal.	B&B	
SHRUBS						
WC	13	Thuja occidentalis 'Clumps'	White Cedar Clumps	1800mm ht.	Potted / bare root	Space 1200mm o.c.
ORNAMENTAL GRASSES						
BL	6	Andropogon gerardii	Big Bluestem	250mm pot	Potted	Space 800mm o.c.
OD	3	Calamagrostis 'Overdam'	Overdam Grass	250mm pot	Potted	Space 800mm o.c.
SG	16	Panicum virgatum	Switchgrass	250mm pot	Potted	Space 800mm o.c.

40 YEAR CANOPY CALCULATION:
-20,396m2 site area
-7 Large trees proposed (154m2 ea.) and 2 small trees proposed (7m2 ea.); 3,242m2 existing trees to remain
=4,314m2 canopy cover =21.2% canopy cover
*Large trees calculated at and small at 3m spread



ADAM BROWN  
MANAGER, DEVELOPMENT REVIEW - RURAL  
PLANNING, REAL ESTATE & ECONOMIC DEVELOPMENT  
DEPARTMENT, CITY OF OTTAWA

APPROVED  
By Adam Brown at 12:56 pm, Nov 24, 2025

CLIENT:  
**OTTAWA SIVAN TEMPLE**

CONSULTANTS:  
ARCHITECTS:  
**P2 concepts**  
739 RIDGEWOOD AVE., UNIT 201  
OTTAWA, ONTARIO, K1V 6M6  
T: (613) 733-1244 F: (613) 254-8659 www.p2concepts.com

SURVEYORS:  
**J.D.BARNES LIMITED**  
LAND INFORMATION SPECIALISTS  
SURVEYING MAPPING GIS  
2500 SHEPPARD AVE. E. SUITE 100  
SCARBOROUGH, ONTARIO M1S 4T6  
T: (416) 751-1244 F: (416) 294-8659 www.jdbarnes.com

CIVIL ENGINEERS:  
**D. B. GRAY ENGINEERING INC.**  
Stormwater Management - Grading & Drainage - Storm & Sanitary Sewers - Watermaines  
700 Long Point Circle  
Ottawa, Ontario  
613-425-8044  
d.gray@dbgrayengineering.com

LEGEND:  

- EXTENT OF CRZ
- EXISTING TREE TO REMAIN
- EXISTING VEGETATION TO REMAIN
- 30m3 SOIL VOLUME
- PROPOSED DECIDUOUS TREE
- PROPOSED SHRUBS / ORNAMENTAL GRASSES
- TREE PROTECTION FENCE
- PROPOSED SOD
- PROPOSED RIPARIAN SEED MIXTURE
- PRECAST CONCRETE PAVERS TYPE 1
- PRECAST CONCRETE PAVERS TYPE 2
- PERMEABLE PAVERS
- ACCESSIBLE BENCH WITH CONCRETE PAD
- PROPOSED PICNIC TABLE

6	REVISED PER NEW CIVIL DRAWING	06/10/2025	ML	JL
5	REVISED PER CITY COMMENTS	04/10/2025	ML	JL
4	REVISED PER CITY COMMENTS	12/02/2024	ML	JL
3	REVISED PER NEW SITE PLAN	10/04/2024	ML	JL
2	ISSUED FOR DISCUSSION AND REVIEW	10/01/2024	ML	JL
1	ISSUED FOR DISCUSSION AND REVIEW	07/30/2024	CM	JL
No.	Issue	Date	MM/DD/YY	DR CK

**JAMES B. LENNOX & ASSOCIATES INC.**  
**LANDSCAPE ARCHITECTS**  
3332 CARLING AVE. OTTAWA, ONTARIO K2H 5A8  
Tel. (613) 722-5168 Fax. (1866) 343-3942

PROJECT:  
OTTAWA SIVAN TEMPLE  
2104 ROGER STEVENS DRIVE, OTTAWA ON

DRAWING:  
LANDSCAPE PLAN

STAMP:

SCALE:  
AS SHOWN  
START DATE:  
JULY 2024  
PROJECT NO.:  
24MIS2438

PROJECT NORTH:

DRAWING NO.:  
**L.1**  
PLOT SIZE ARCH-D

File no. D07-12-25-0049 Plan no. 19282