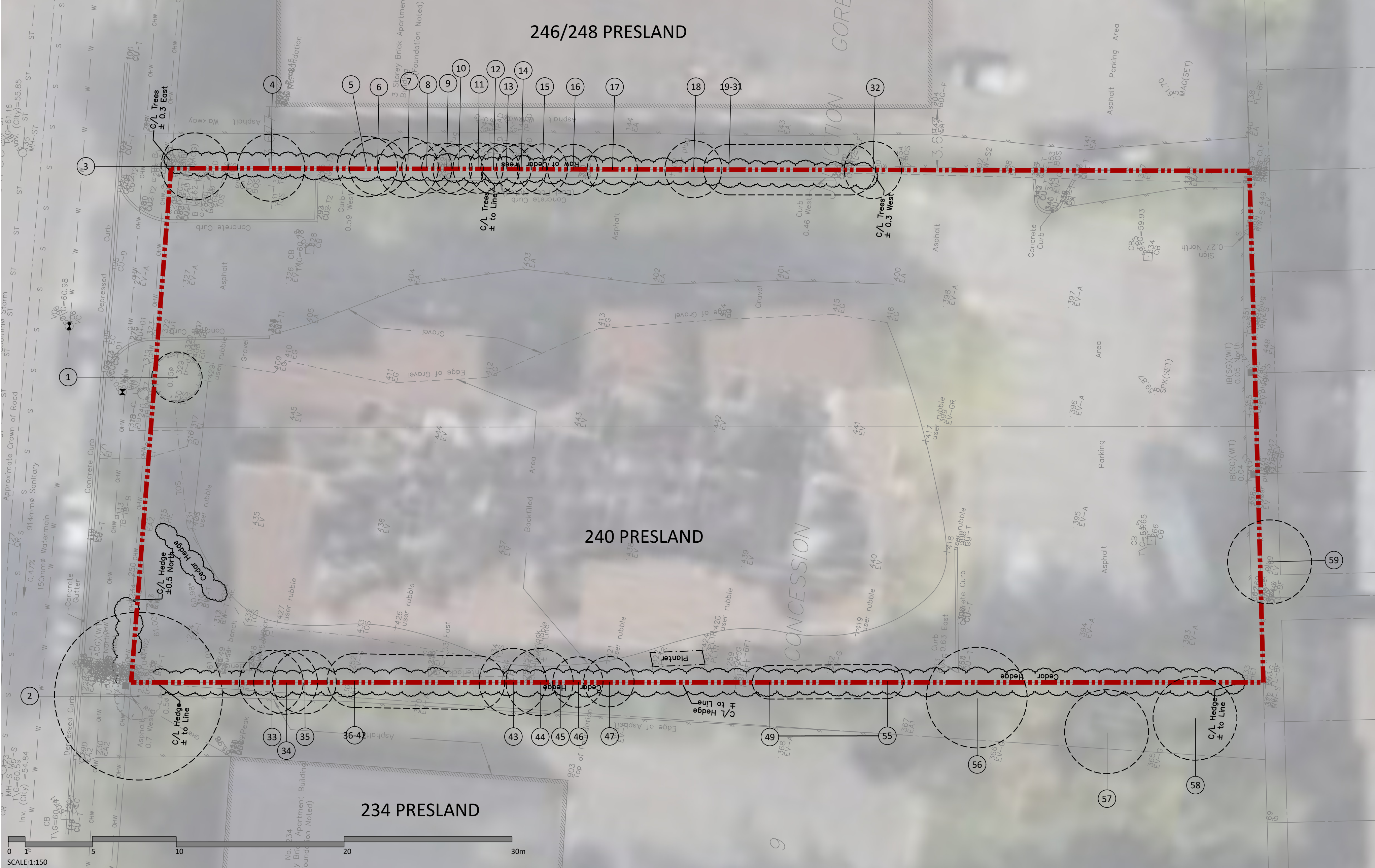


Tree #	Botanical Name	Common Name	DBH (cm)	Ownership		Condition	NOTES	To Be Preserved
1	Acer negundo	Manitoba Maple	15	Private	240 Presland	Moderate	Single stem, Girdled trunk (wire)	NO
2	Acer negundo	Manitoba Maple	50	Private	234 Presland	Moderate	Asymmetrical canopy, Pruned @ O.H., Poor branch union, Multi-stem w/ 2 co-dominant leaders @ 3m above grade. Bark rot @ cavities.	YES
3	Rhamnus Cathartica	European Buckthorn	20	Private	246/248 Presland	Moderate	Asymmetrical canopy, Single stem. Bark rot @ limbs. NHB.	YES
4	Rhamnus Cathartica	European Buckthorn	14	Boundary	246/248 Presland & 240 Presland	Moderate	Asymmetrical canopy, Pruned limb, Single stem, Heart rot @ cavities.	YES
5	Thuja Occidentalis	Eastern White Cedar	18	Boundary	246/248 Presland & 240 Presland	Moderate	Asymmetrical canopy, Poor branch union, Single stem w/ 2 co-dominant leaders @ 3m above grade.	YES
6	Thuja Occidentalis	Eastern White Cedar	17	Boundary	246/248 Presland & 240 Presland	Good	Asymmetrical canopy, Pruned limbs, Single stem	YES
7	Thuja Occidentalis	Eastern White Cedar	2@ 18	Boundary	246/248 Presland & 240 Presland	Moderate	Asymmetrical canopy, Pruned leader, Poor branch union. Multi-stem w/2 co-dominant leaders.	YES
8	Thuja Occidentalis	Eastern White Cedar	18	Boundary	246/248 Presland & 240 Presland	Good	Asymmetrical canopy, Poor branch angle. Single stem. Included bark	YES
9	Thuja Occidentalis	Eastern White Cedar	14	Boundary	246/248 Presland & 240 Presland	Poor	Dieback ~75% @ canopy, Pruned leader. Single stem	YES
10	Thuja Occidentalis	Eastern White Cedar	15	Boundary	246/248 Presland & 240 Presland	Moderate	Asymmetrical canopy, Broken limbs, Pruned limbs, Single stem	YES
11	Thuja Occidentalis	Eastern White Cedar	15	Boundary	246/248 Presland & 240 Presland	Moderate	Asymmetrical canopy, Broken limbs, Pruned limbs, Single stem	YES
12	Thuja Occidentalis	Eastern White Cedar	15	Boundary	246/248 Presland & 240 Presland	Moderate	Asymmetrical canopy, Broken limbs, Pruned limbs, Single stem	YES
13	Thuja Occidentalis	Eastern White Cedar	15	Boundary	246/248 Presland & 240 Presland	Moderate	Asymmetrical canopy, Broken limbs, Pruned limbs, Single stem	YES
14	Thuja Occidentalis	Eastern White Cedar	14	Boundary	246/248 Presland & 240 Presland	Good	Asymmetrical canopy, Single stem. Included bark	YES
15	Thuja Occidentalis	Eastern White Cedar	12	Boundary	246/248 Presland & 240 Presland	Poor	Asymmetrical canopy, Dieback ~75%, Bark, Damaged Bark on approx. 50% of trunk, Pruned leader, Single stem	NO
16	Thuja Occidentalis	Eastern White Cedar	12	Boundary	246/248 Presland & 240 Presland	Moderate	Asymmetrical canopy, Pruned, Multi-stem 2, Dead leader	YES
17	Thuja Occidentalis	Eastern White Cedar	15	Boundary	246/248 Presland & 240 Presland	Moderate	Asymmetrical canopy, Pruned leaders, Multi-stem 2, Rot @ crotches.	YES

18	Thuja Occidentalis	Eastern White Cedar	17	Boundary	246/248 Presland & 240 Presland	Moderate	Asymmetrical canopy, Pruned leaders, Single stem 2, Bark rot @ trunk.	YES
19-31	Thuja Occidentalis	Eastern White Cedar	15	Boundary	246/248 Presland & 240 Presland	Moderate	Asymmetrical canopy, Single stem	YES
32	Thuja Occidentalis	Eastern White Cedar	25	Boundary	246/248 Presland & 240 Presland	Good	Asymmetrical canopy, Multi-stem 2. Girdled by wire @ base.	YES
33-34	Thuja Occidentalis	Eastern White Cedar	19	Boundary	234 Presland & 240 Presland	Moderate	Asymmetrical canopy, Single stem w/ 2 leaders @ 1m above grade.	YES
35	Thuja Occidentalis	Eastern White Cedar	20	Boundary	234 Presland & 240 Presland	Moderate	Asymmetrical canopy, Pruned leader, Multi-stem 2	YES
36-42	Thuja Occidentalis	Eastern White Cedar	16	Boundary	234 Presland & 240 Presland	Moderate	Asymmetrical canopy, Single stem	YES
43	Thuja Occidentalis	Eastern White Cedar	20	Boundary	234 Presland & 240 Presland	Moderate	Asymmetrical canopy, Single stem w/ 2 leaders @ 1m above grade.	YES
44	Thuja Occidentalis	Eastern White Cedar	20	Boundary	234 Presland & 240 Presland	Moderate	Asymmetrical canopy, Single stem w/ 2 leaders @ 1m above grade.	YES
45						Dead		NO
46	Thuja Occidentalis	Eastern White Cedar	15	Boundary	234 Presland & 240 Presland	Moderate	Asymmetrical canopy, Poor branch angle. Single stem	YES
47	Thuja Occidentalis	Eastern White Cedar	15	Boundary	234 Presland & 240 Presland	Poor	Asymmetrical canopy, Broken limbs. Single stem. Broken leader	YES
48	Acer negundo	Manitoba Maple	20	Boundary	234 Presland & 240 Presland	Good	Asymmetrical canopy, Broken limbs. Single stem	YES
49-55	Thuja Occidentalis	Eastern White Cedar	10	Boundary	234 Presland & 240 Presland	Moderate	Asymmetrical canopy, Broken limbs, Pruned. Single stem	YES
56	Acer negundo	Manitoba Maple	30	Private	234 Presland	Moderate	Asymmetrical canopy, Single stem, Leaning. NHB	YES
57	Acer negundo	Manitoba Maple	25	Private	234 Presland	Moderate	Asymmetrical canopy, Single stem, Leaning. NHB	YES
58	Acer negundo	Manitoba Maple	15	Private	234 Presland	Moderate	Asymmetrical canopy, Single stem, Leaning. NHB	YES
59	Acer spp.	Maple	20	Private	191 Arcola	Good	Symmetrical canopy, Multi-stem. NHB, overhang	YES

NOTES:

- THE EXISTING SITE IS A VACANT LOT WITH AN ABANDONED ASPHALT PARKING LOT AND GRANULAR PILE.
- THERE ARE A TOTAL OF FIFTY-NINE TREES INCLUDED IN THE TREE CONSERVATION REPORT, IN VARYING CONDITIONS.
- THE DEVELOPMENT SITE IS NOT CONSIDERED OF PRIMARY, SUPPORTING OR CONTRIBUTING SIGNIFICANCE AS NATURAL LANDS IN THE GREENSPACE MASTER PLAN
- THERE ARE NO OTHER APPLICATIONS AFFECTING THE LAND UPON WHICH TREES ARE TO BE PROTECTED, INJURED OR DESTROYED.



1 EXISTING CONDITIONS

1:150

Contractor shall check all dimensions on the work and report any discrepancy to the Landscape Architect before proceeding. All drawings and specifications are the property of the Landscape Architect and must be returned at the completion of the work. This drawing is not to be used for construction until signed by the Landscape Architect.

Key Plan



Client:



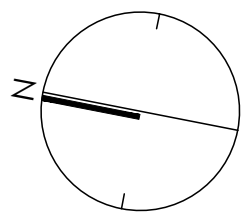
LEGEND

- PROPERTY LINE
- CRITICAL ROOT ZONE (RETAINED)
- TREE IDENTIFICATION NUMBER

-		
-		
-		
3	Issued for Revised First Submission	JUN 11/25
2	Issued for First Submission	APR 03/25
1	Issued for Client Review	JAN 14/25
No.	Description	Date
Revision		
City Approval Stamp		

ISA CERTIFICATION
NUMBER: ON-3138A

PROPERTY INFORMATION
CITY OF OTTAWA PIN NUMBER 04255-0146



NAK
design strategies

1285 WELLINGTON STREET, OTTAWA, ON K1Y 3A8 CANADA
T 416.237.2345
NAKDESIGNSTRATEGIES.COM

Project

CCOC 240 PRESLAND
240 PRESLAND, OTTAWA, ON

Title
TREE CONSERVATION REPORT

Date 2025-01-02
Scale 1:150
Drawn SW
Checked PG
Job No. 24-160

Sheet

TCR01

PLAN N° XXXXX

SPA CITY FILE N° D07-12-25-0057

Tree #	Botanical Name	Common Name	DBH (cm)	Ownership		Condition	NOTES	To Be Preserved	Reason for Removal
1	Acer negundo	Manitoba Maple	15	Private	240 Presland	Moderate	Single stem, Girdled trunk (wire)	NO	Construction activities & conflict with proposed hard surface layout
2	Acer negundo	Manitoba Maple	50	Private	234 Presland	Moderate	Asymmetrical canopy, Pruned @ O.H., Poor branch union, Multi-stem w/ 2 co-dominant leaders @ 3m above grade. Bark rot @ cavities.	YES	
3	Rhamnus Cathartica	European Buckthorn	20	Private	246/248 Presland	Moderate	Asymmetrical canopy, Single stem. Bark rot @ limbs. NHB.	YES	
4	Rhamnus Cathartica	European Buckthorn	14	Boundary	246/248 Presland & 240 Presland	Moderate	Asymmetrical canopy, Pruned limb, Single stem, Heart rot @ cavities.	YES	
5	Thuja Occidentalis	Eastern White Cedar	18	Boundary	246/248 Presland & 240 Presland	Moderate	Asymmetrical canopy, Poor branch union, Single stem w/ 2 co-dominant leaders @ 3m above grade.	YES	
6	Thuja Occidentalis	Eastern White Cedar	17	Boundary	246/248 Presland & 240 Presland	Good	Asymmetrical canopy, Pruned limbs, Single stem	YES	
7	Thuja Occidentalis	Eastern White Cedar	2@ 18	Boundary	246/248 Presland & 240 Presland	Moderate	Asymmetrical canopy, Pruned leader, Poor branch union. Multi-stem w/2 co-dominant leaders.	YES	
8	Thuja Occidentalis	Eastern White Cedar	18	Boundary	246/248 Presland & 240 Presland	Good	Asymmetrical canopy, Poor branch angle. Single stem. Included bark	YES	
9	Thuja Occidentalis	Eastern White Cedar	14	Boundary	246/248 Presland & 240 Presland	Poor	Dieback ~75% @ canopy, Pruned leader. Single stem	YES	
10	Thuja Occidentalis	Eastern White Cedar	15	Boundary	246/248 Presland & 240 Presland	Moderate	Asymmetrical canopy, Broken limbs, Pruned limbs, Single stem	YES	
11	Thuja Occidentalis	Eastern White Cedar	15	Boundary	246/248 Presland & 240 Presland	Moderate	Asymmetrical canopy, Broken limbs, Pruned limbs, Single stem	YES	
12	Thuja Occidentalis	Eastern White Cedar	15	Boundary	246/248 Presland & 240 Presland	Moderate	Asymmetrical canopy, Broken limbs, Pruned limbs, Single stem	YES	
13	Thuja Occidentalis	Eastern White Cedar	15	Boundary	246/248 Presland & 240 Presland	Moderate	Asymmetrical canopy, Broken limbs, Pruned limbs, Single stem	YES	
14	Thuja Occidentalis	Eastern White Cedar	14	Boundary	246/248 Presland & 240 Presland	Good	Asymmetrical canopy, Single stem. Included bark	YES	Poor condition and in state of decline. Highly likely to be sensitive to construction impacts
15	Thuja Occidentalis	Eastern White Cedar	12	Boundary	246/248 Presland & 240 Presland	Poor	Asymmetrical canopy, Dieback ~75%, Bark, Damaged Bark on approx. 50% of trunk, Pruned leader, Single stem	NO	
16	Thuja Occidentalis	Eastern White Cedar	12	Boundary	246/248 Presland & 240 Presland	Moderate	Asymmetrical canopy, Pruned, Multi-stem 2, Dead leader	YES	
17	Thuja Occidentalis	Eastern White Cedar	15	Boundary	246/248 Presland & 240 Presland	Moderate	Asymmetrical canopy, Pruned leaders, Multi-stem 2, Rot @ crotches.	YES	

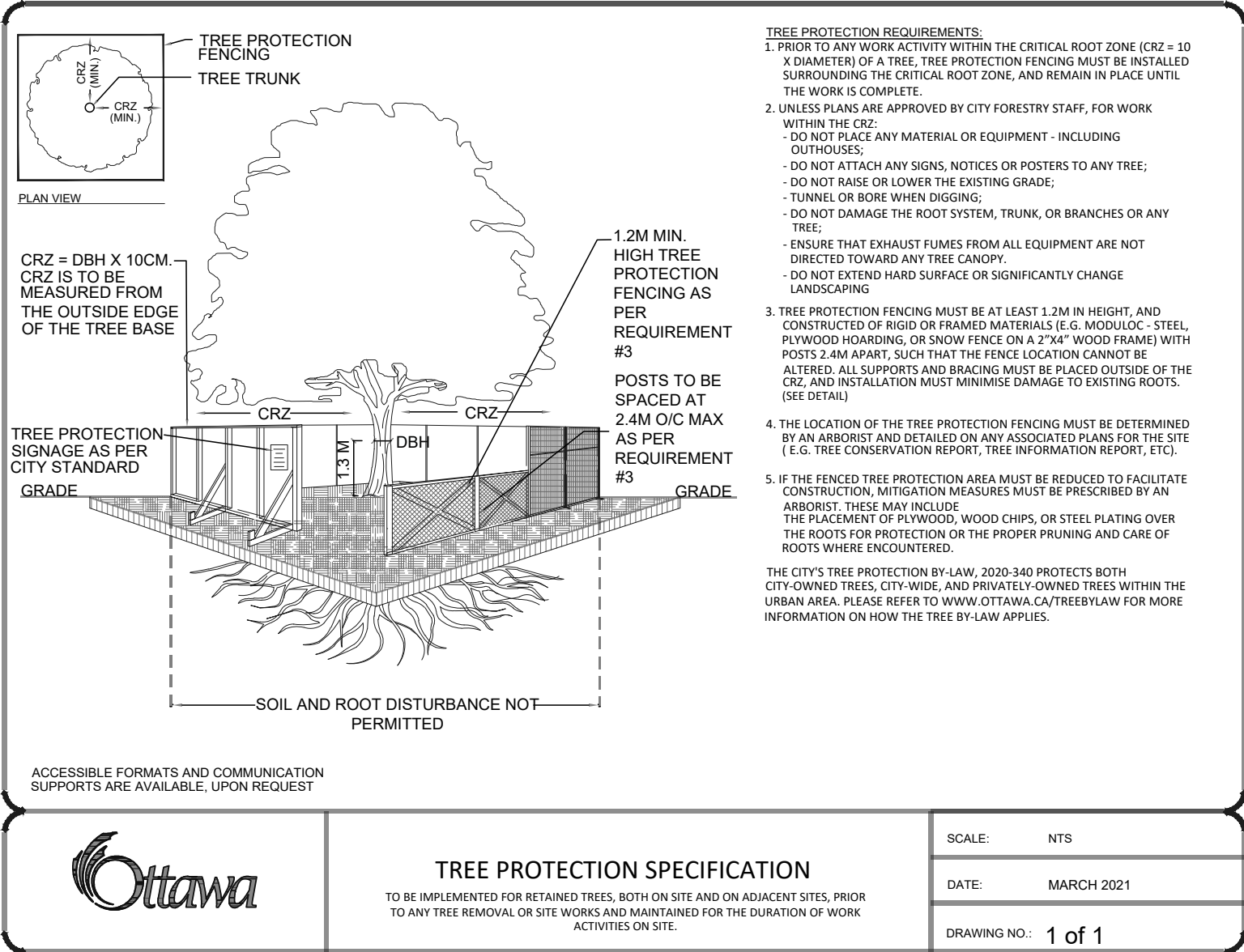
18	Thuja Occidentalis	Eastern White Cedar	17	Boundary	246/248 Presland & 240 Presland	Moderate	Asymmetrical canopy, Pruned leaders, Single stem 2, Bark rot @ trunk.	YES
19-31	Thuja Occidentalis	Eastern White Cedar	15	Boundary	246/248 Presland & 240 Presland	Moderate	Asymmetrical canopy, Single stem	YES
32	Thuja Occidentalis	Eastern White Cedar	25	Boundary	246/248 Presland & 240 Presland	Good	Asymmetrical canopy, Multi-stem 2. Girdled by wire @ base.	YES
33-34	Thuja Occidentalis	Eastern White Cedar	19	Boundary	234 Presland & 240 Presland	Moderate	Asymmetrical canopy, Single stem w/ 2 leaders @ 1m above grade.	YES
35	Thuja Occidentalis	Eastern White Cedar	20	Boundary	234 Presland & 240 Presland	Moderate	Asymmetrical canopy, Pruned leader, Multi-stem 2	YES
36-42	Thuja Occidentalis	Eastern White Cedar	16	Boundary	234 Presland & 240 Presland	Moderate	Asymmetrical canopy, Single stem	YES
43	Thuja Occidentalis	Eastern White Cedar	20	Boundary	234 Presland & 240 Presland	Moderate	Asymmetrical canopy, Single stem w/ 2 leaders @ 1m above grade.	YES
44	Thuja Occidentalis	Eastern White Cedar	20	Boundary	234 Presland & 240 Presland	Moderate	Asymmetrical canopy, Single stem w/ 2 leaders @ 1m above grade.	YES
45						Dead		NO
46	Thuja Occidentalis	Eastern White Cedar	15	Boundary	234 Presland & 240 Presland	Moderate	Asymmetrical canopy, Poor branch angle. Single stem	YES
47	Thuja Occidentalis	Eastern White Cedar	15	Boundary	234 Presland & 240 Presland	Poor	Asymmetrical canopy, Broken limbs. Single stem. Broken leader	YES
48	Acer negundo	Manitoba Maple	20	Boundary	234 Presland & 240 Presland	Good	Asymmetrical canopy, Broken limbs. Single stem	YES
49-55	Thuja Occidentalis	Eastern White Cedar	10	Boundary	234 Presland & 240 Presland	Moderate	Asymmetrical canopy, Broken limbs, Pruned. Single stem	YES
56	Acer negundo	Manitoba Maple	30	Private	234 Presland	Moderate	Asymmetrical canopy, Single stem, Leaning. NHB	YES
57	Acer negundo	Manitoba Maple	25	Private	234 Presland	Moderate	Asymmetrical canopy, Single stem, Leaning. NHB	YES
58	Acer negundo	Manitoba Maple	15	Private	234 Presland	Moderate	Asymmetrical canopy, Single stem, Leaning. NHB	YES
59	Acer spp.	Maple	20	Private	191 Arcola	Good	Symmetrical canopy, Multi-stem. NHB, overhang	YES

TREE PLANTING RECOMMENDATIONS:

- THE USE OF NATIVE, NON-INVASIVE TREE SPECIES ARE RECOMMENDED, FOR EXAMPLE, BUT NOT LIMITED TO, SPECIES SUCH AS *ABIES BALSAMEA*, *ACER RUBRUM*, *AESCULUS GLABRA*, *AMELANCHIER LAEVIS*, *CELTIS OCCIDENTALIS*, *GYMNOCLADUS DIOICUS*, *QUERCUS MACROCARPA*, *QUERCUS RUBRA*. GUIDELINES FOR TREE PLANTING IN SENSITIVE MARINE CLAY SOILS SHALL BE FOLLOWED IF APPLICABLE TO THE SITE.
-

TREE PRESERVATION / REMOVAL NOTES:

- TREES IDENTIFIED FOR RETENTION ARE IN MODERATE TO GOOD CONDITION AND CAN BE REASONABLY PROTECTED FROM CONSTRUCTION ACTIVITIES, GIVEN ADEQUATE TREE PROTECTION MEASURES AS DESCRIBED ARE TAKEN.
- USE OF HYDRO VAC TECHNOLOGIES AND HAND PRUNING SHALL BE USED TO ENSURE A CLEAN INTERFACE FOR PROPER ROOT PRUNING BY A QUALIFIED ARBORIST (ISA CERTIFIED)
- A QUALIFIED ARBORIST (ISA CERTIFIED) OR OTHER TREE PROFESSIONAL AS APPROVED BY THE CITY OF OTTAWA MUST PRUNE ROOTS OR BRANCHES THAT EXTEND BEYOND PRESCRIBED TREE PROTECTION ZONE AS REQUIRED. ALL PRUNING OF TREE ROOTS AND BRANCHES MUST BE IN ACCORDANCE WITH GOOD ARBORICULTURAL STANDARDS.
- TREES SHALL BE INSPECTED BY THE LANDSCAPE ARCHITECT OR CITY FORESTER REGULARLY FOR DAMAGE INCURRED DURING CONSTRUCTION TO ENSURE APPROPRIATE PRUNING OR OTHER MEASURES ARE IMPLEMENTED.
- THE AREAS WITHIN THE TREE PROTECTION ZONE MUST REMAIN UNDISTURBED AT ALL TIMES. NO WORK OR MATERIAL STORAGE IS PERMITTED WITHIN THE TREE PROTECTION ZONE.
- TREES THAT HAVE DIED OR HAVE BEEN DAMAGED BEYOND REPAIR WILL BE REMOVED AND REPLACED WITH TREES OF AN EQUIVALENT SIZE AND SPECIES AS APPROVED BY THE LANDSCAPE ARCHITECT OR CITY OF OTTAWA.
- TREE PROTECTION FENCE MUST NOT BE REMOVED WITHOUT THE WRITTEN AUTHORIZATION OF THE LANDSCAPE ARCHITECT.
- ALL DISTURBED AREAS TO BE RESTORED TO FINISHED CONDITION WITH 150mm TOPSOIL AND SOD OR SEED AS INDICATED.
- ALL NECESSARY CLEARING AND GRUBBING SHALL BE COMPLETED BY THE CONTRACTOR. REVIEW REMOVAL WITH LANDSCAPE ARCHITECT AND THE CITY OF OTTAWA PRIOR TO ANY TREE CUTTING.
- IF CUTTING OF ROOTS OR CHANGING OF GRADES AROUND EXISTING TREES IS SPECIFIED, FOLLOW APPROPRIATE DETAILS AS DIRECTED BY LANDSCAPE ARCHITECT.
- INSTALL TREE PROTECTION FENCE TO SATISFACTION OF THE LANDSCAPE ARCHITECT. TREE PROTECTION SHALL REMAIN UNTIL SUBSTANTIAL PERFORMANCE OF THE PROJECT OR UPON WRITTEN AUTHORIZATION FROM THE LANDSCAPE ARCHITECT.
- INSTALLATION OF TREE PROTECTION FENCE SHALL BE LOCATED AT THE CRITICAL ROOT ZONE.
CRITICAL ROOT ZONE : 10cm x DIAMETER AT BREAST HEIGHT (DBH)
EXAMPLE: DBH = 30cm; CRZ = 300cm / 3.0m
- THE FOLLOWING TREE PROTECTION MEASURES WILL BE PROVIDED TO ENSURE THE PRESERVATION OF THE TREES IDENTIFIED IN THE DETAILED TREE PLANTING AND CONSERVATION PLAN TO THE SATISFACTION OF FORESTRY SERVICES:
 - EQUIPMENT SHALL NOT BE ALLOWED TO OPERATE, PARK, BE REPAIRED OR REFUELED; NOR SHALL CONSTRUCTION MATERIALS BE STORED OR ANY EARTH MATERIALS BE STOCKPILED; WITHIN THE TREE PROTECTION FENCE OR WITHIN THE CRITICAL ROOT ZONE OF ANY TREE. WASTE OR VOLATILE MATERIALS, SUCH AS MINERAL SPIRITS, OIL OR PAINT THINNER SHALL NOT BE DISPOSED OF ON SITE.
 - WHEN EXCAVATION MUST TAKE PLACE WITHIN THE CRITICAL ROOT ZONE OF A TREE, A TRENCH SHALL BE DUG CAREFULLY BY HAND OR WITH A ROOT-CUTTING (STUMP GRINDER) OR STONE CUTTING (CUT-OFF) MACHINE ALONG THE FURTHEST REACH OF THE CUT.



Contractor shall check all dimensions on the work and report any discrepancy to the Landscape Architect before proceeding. All drawings and specifications are the property of the Landscape Architect and must be returned at the completion of the work. This drawing is not to be used for construction until signed by the Landscape Architect.

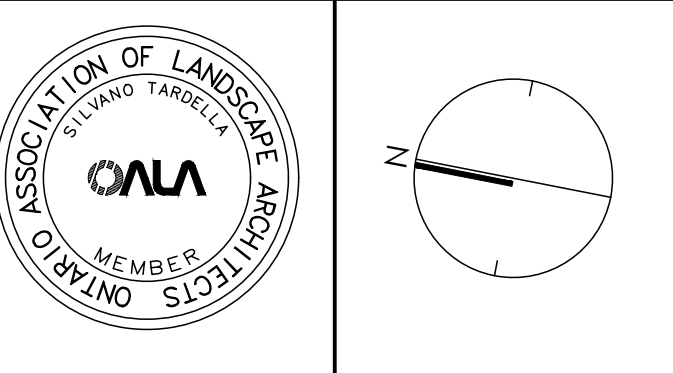


LEGEND	
	PROPERTY LINE
	CRITICAL ROOT ZONE (RETAINED)
	TREE IDENTIFICATION NUMBER EXISTING TREE TO BE REMOVED
	PROPOSED BUILDING
	PROPOSED TREE REFER TO LANDSCAPE PLAN
	TREE PROTECTION FENCING
	CRITICAL ROOT ZONE (REMOVED)

-		
-		
-		
-		
3	Issued for Revised First Submission	JUN 11/25
2	Issued for First Submission	APR 03/25
1	Issued for Client Review	JAN 14/25
No.	Description	Date
Revision		
City Approval Stamp		

ISA CERTIFICATION
NUMBER: ON-3138A

PROPERTY INFORMATION
CITY OF OTTAWA PIN NUMBER 04255-0146



NAK
design strategies

1285 WELLINGTON STREET, OTTAWA, ON K1Y 3A8 CANADA
1 413 237 2345 NAKDESIGNSTRATEGIES.COM

Project

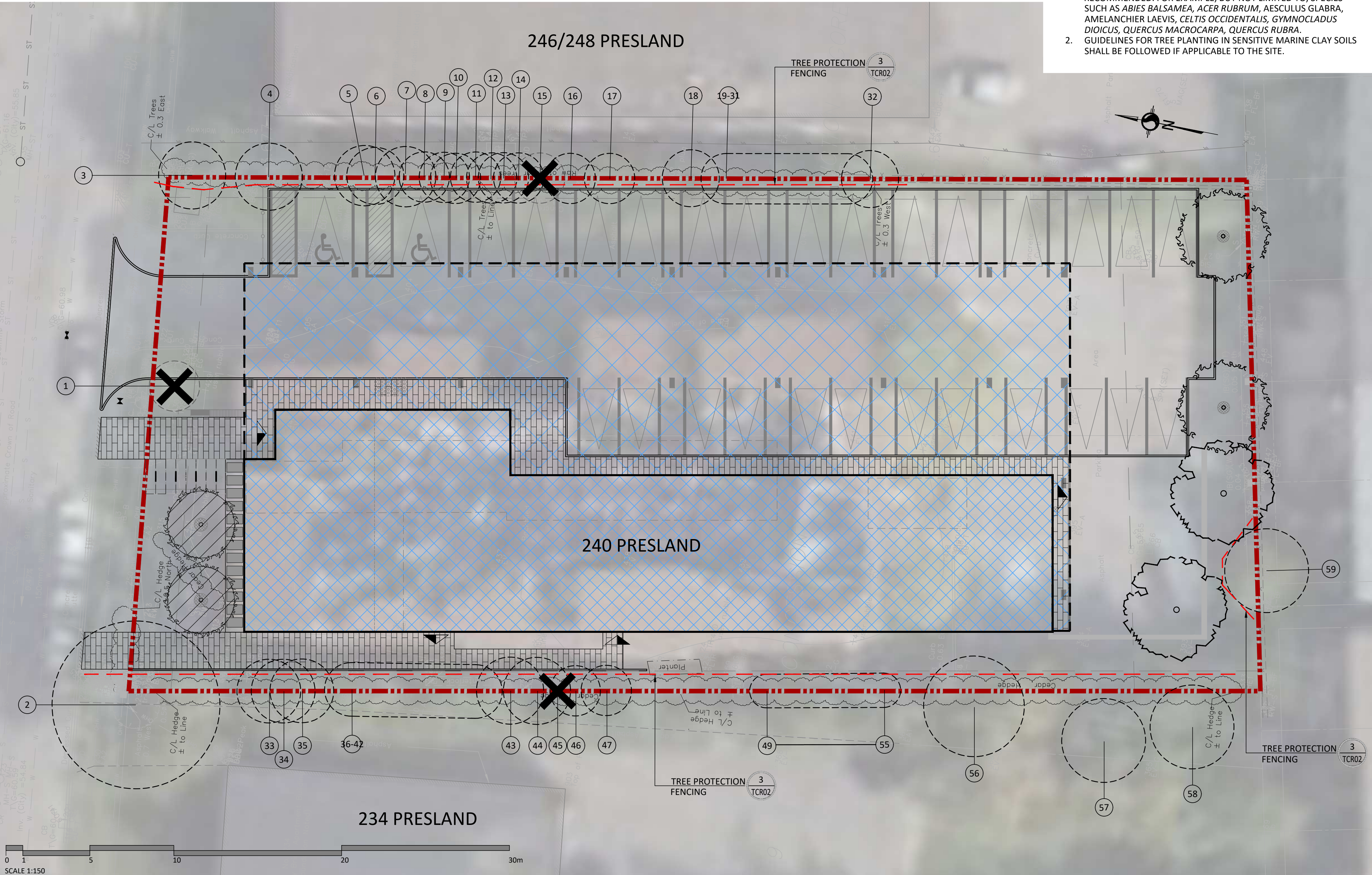
CCOC 240 PRESLAND
240 PRESLAND, OTTAWA, ON

Title

TREE CONSERVATION REPORT

Date	2025-01-02	Sheet
Scale	1:150	
Drawn	SW	
Checked	PG	
Job No.	24-160	

PLAN N° XXXXX



2 PROPOSED DEVELOPMENT

1:150

3 TREE PROTECTION FENCING

Scale: N.T.S.

SPA CITY FILE N° D07-12-25-0057