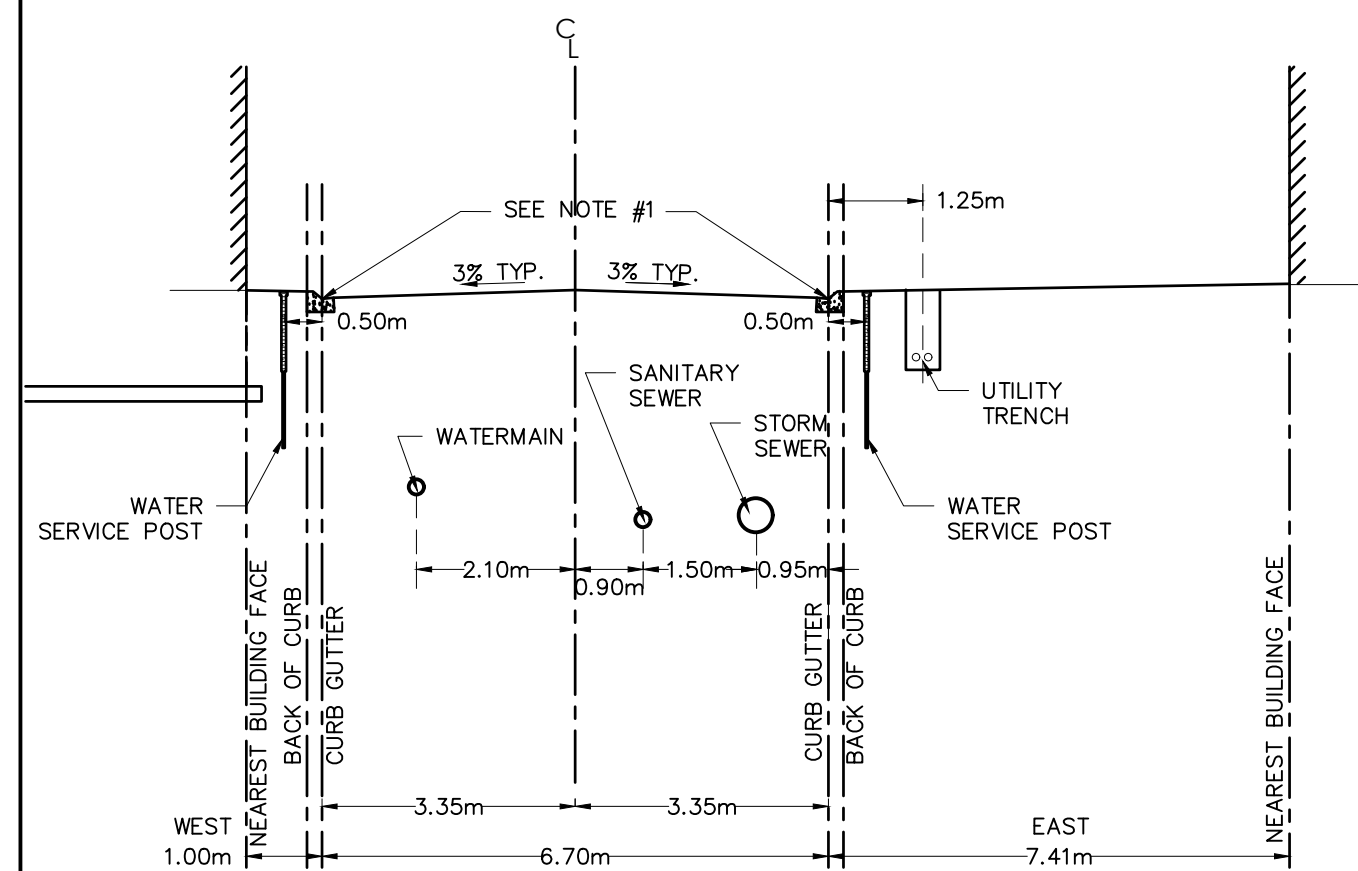


NOTES:

1. MOUNTABLE CURB WITH WIDE GUTTER AS PER CITY OF OTTAWA STD SC1.3. BARRIER CURB AS PER CITY OF OTTAWA STD SC1.1 REFER TO GRADING PLANS FOR CURB TYPE LOCATIONS.
2. AT CATCH BASIN AND HYDRANT LOCATIONS THE GAS MAIN SHALL HAVE A MINIMUM 0.6m CLEARANCE FROM STRUCTURES.

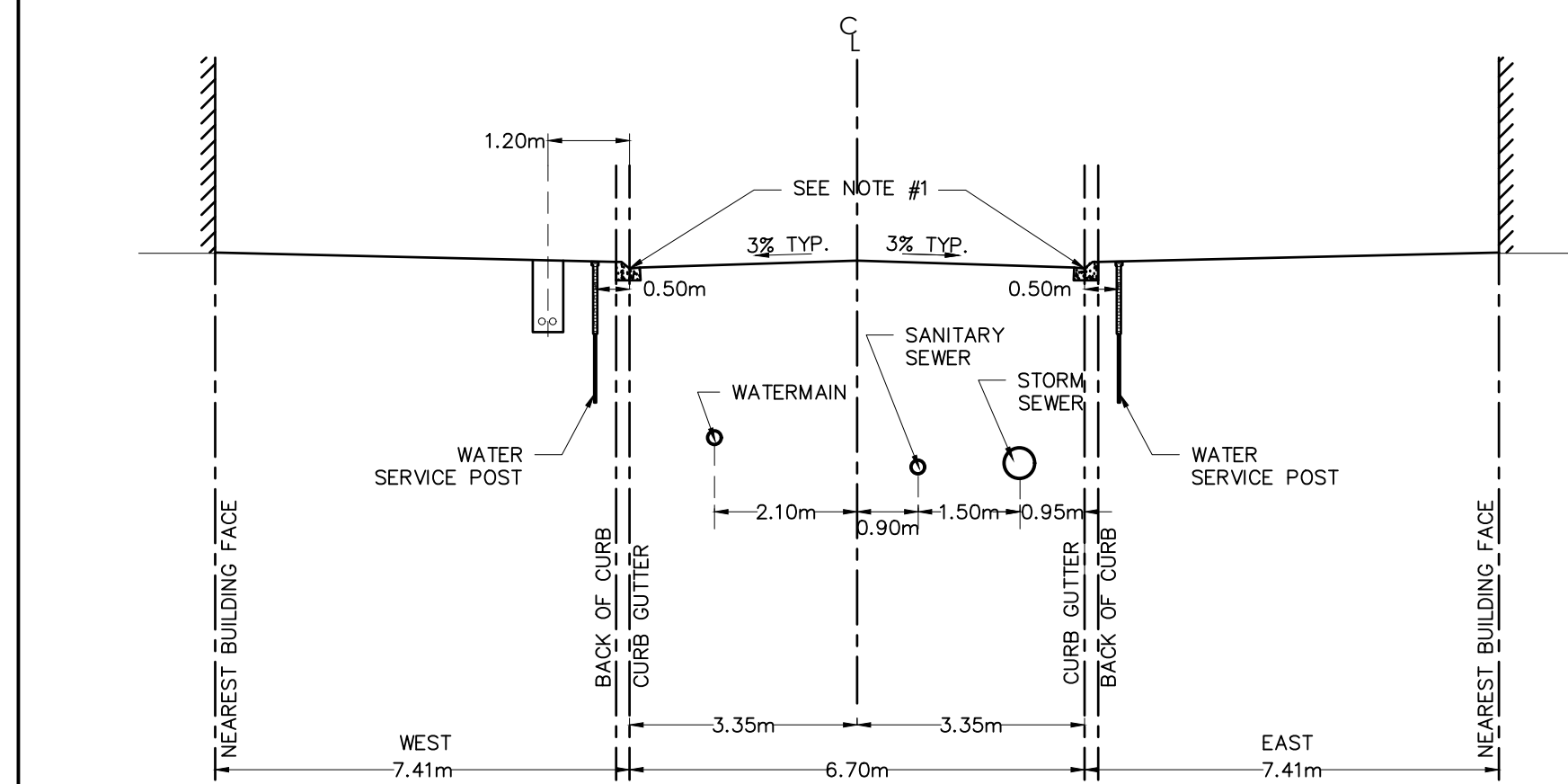
TYPICAL PRIVATE ACCESS ROAD
STREET #1
SECTION A-A



NOTES:

1. MOUNTABLE CURB WITH WIDE GUTTER AS PER CITY OF OTTAWA STD SC1.3. BARRIER CURB AS PER CITY OF OTTAWA STD SC1.1 REFER TO GRADING PLANS FOR CURB TYPE LOCATIONS.
2. AT CATCH BASIN AND HYDRANT LOCATIONS THE GAS MAIN SHALL HAVE A MINIMUM 0.6m CLEARANCE FROM STRUCTURES.

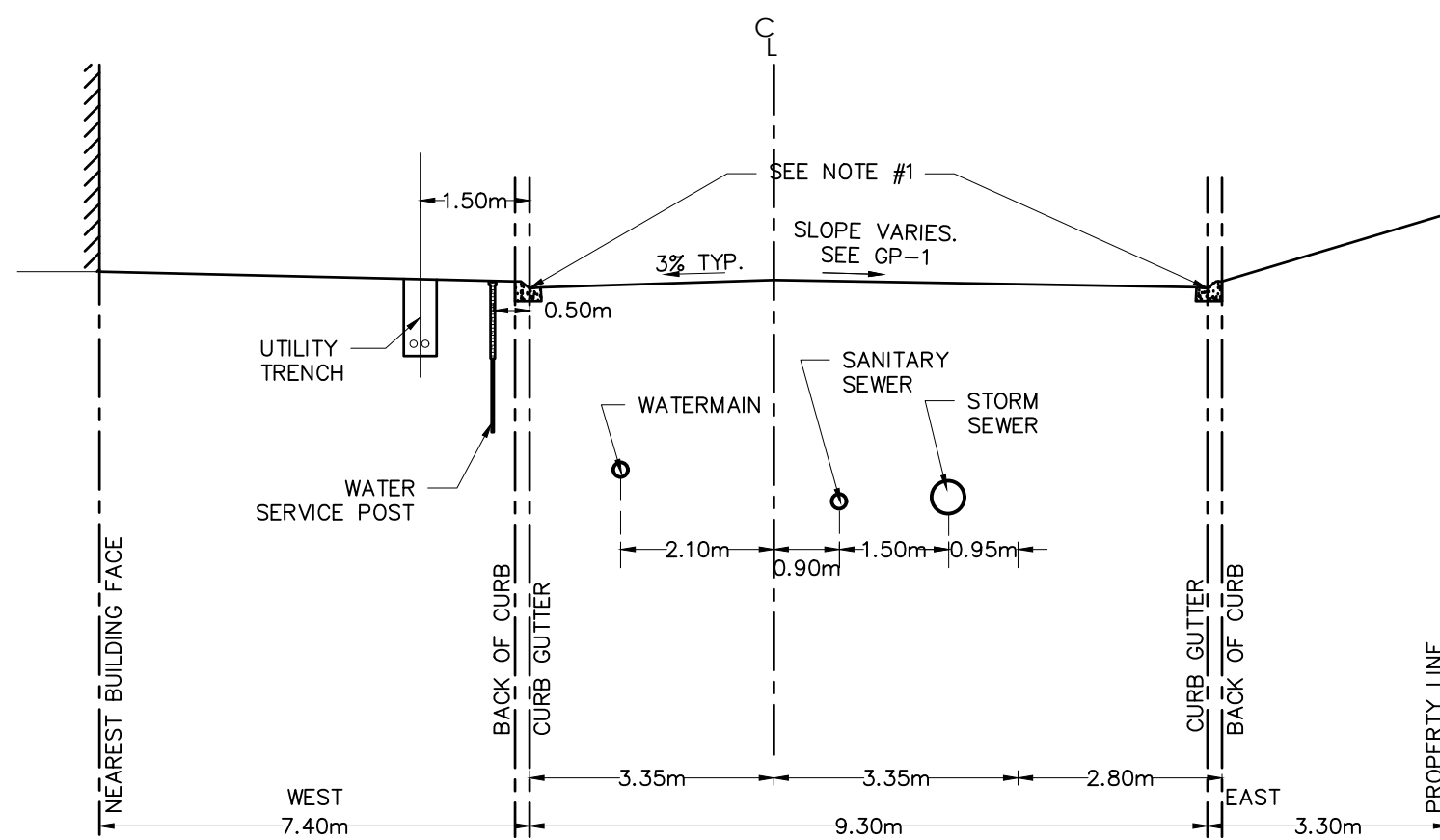
TYPICAL PRIVATE ACCESS ROAD
STREET #1
SECTION D-D



NOTES:

1. MOUNTABLE CURB WITH WIDE GUTTER AS PER CITY OF OTTAWA STD SC1.3. BARRIER CURB AS PER CITY OF OTTAWA STD SC1.1 REFER TO GRADING PLANS FOR CURB TYPE LOCATIONS.
2. AT CATCH BASIN AND HYDRANT LOCATIONS THE GAS MAIN SHALL HAVE A MINIMUM 0.6m CLEARANCE FROM STRUCTURES.

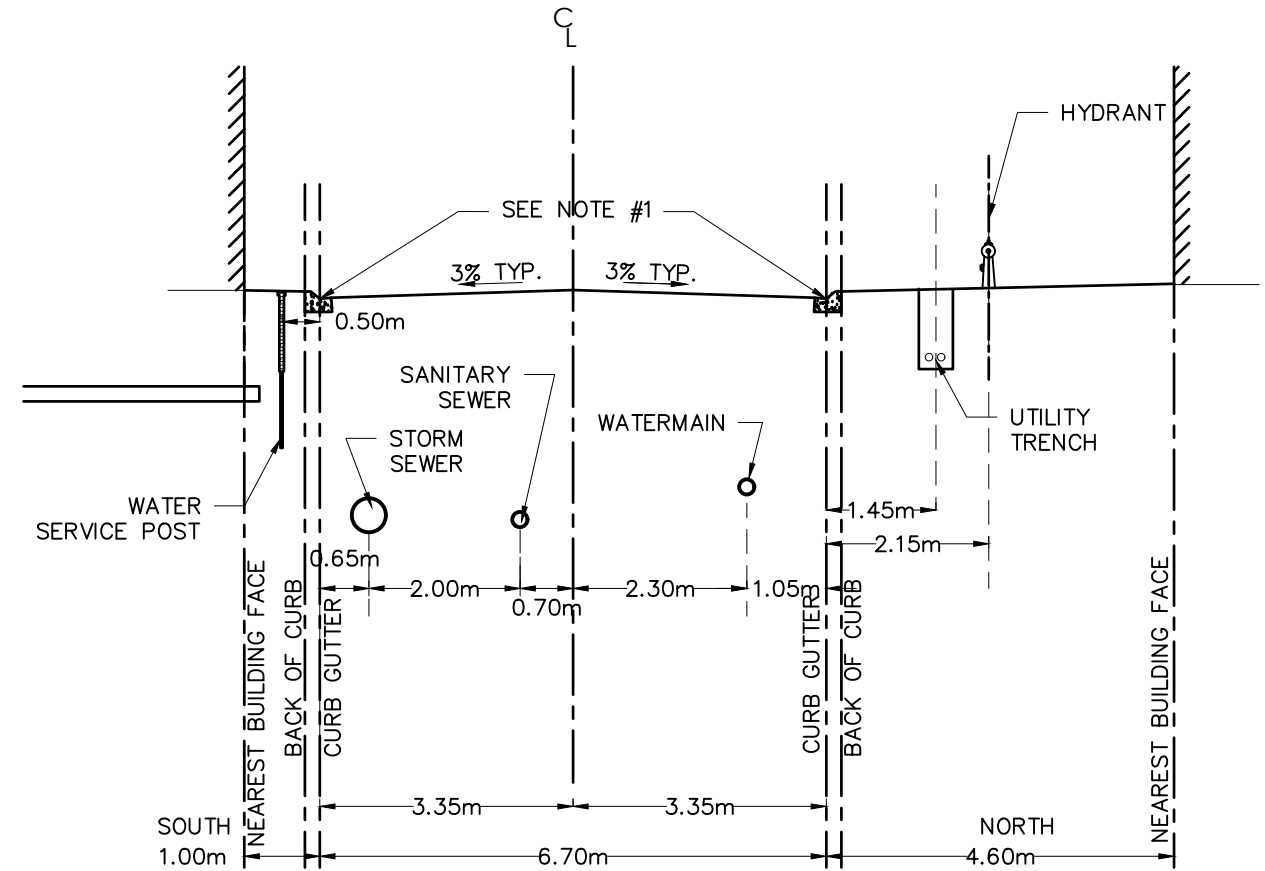
TYPICAL PRIVATE ACCESS ROAD
STREET #1
SECTION E-E



NOTES:

1. MOUNTABLE CURB WITH WIDE GUTTER AS PER CITY OF OTTAWA STD SC1.3. BARRIER CURB AS PER CITY OF OTTAWA STD SC1.1 REFER TO GRADING PLANS FOR CURB TYPE LOCATIONS.
2. AT CATCH BASIN AND HYDRANT LOCATIONS THE GAS MAIN SHALL HAVE A MINIMUM 0.6m CLEARANCE FROM STRUCTURES.

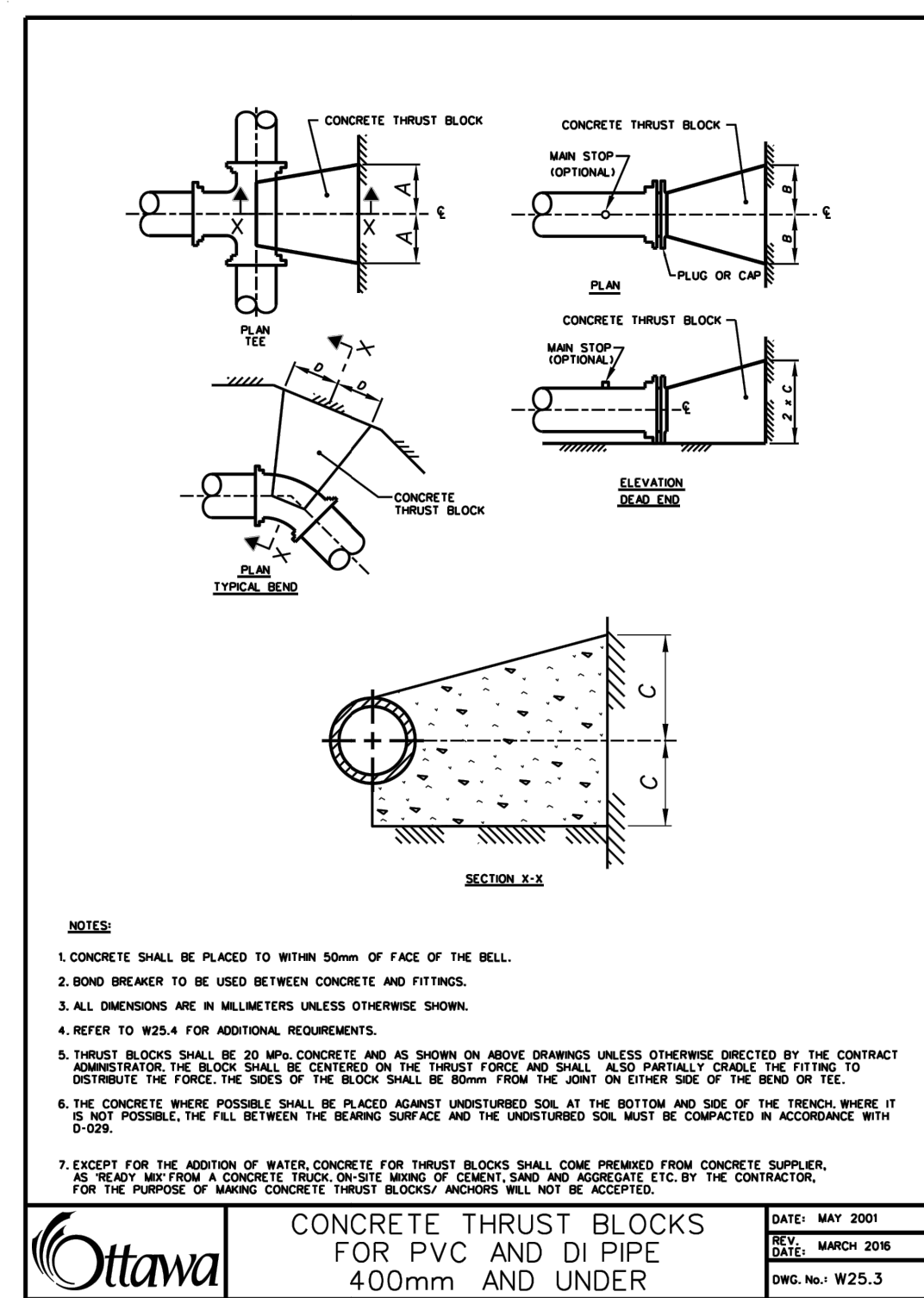
TYPICAL PRIVATE ACCESS ROAD
STREET #1
SECTION B-B



NOTES:

1. MOUNTABLE CURB WITH WIDE GUTTER AS PER CITY OF OTTAWA STD SC1.3. BARRIER CURB AS PER CITY OF OTTAWA STD SC1.1 REFER TO GRADING PLANS FOR CURB TYPE LOCATIONS.
2. AT CATCH BASIN AND HYDRANT LOCATIONS THE GAS MAIN SHALL HAVE A MINIMUM 0.6m CLEARANCE FROM STRUCTURES.

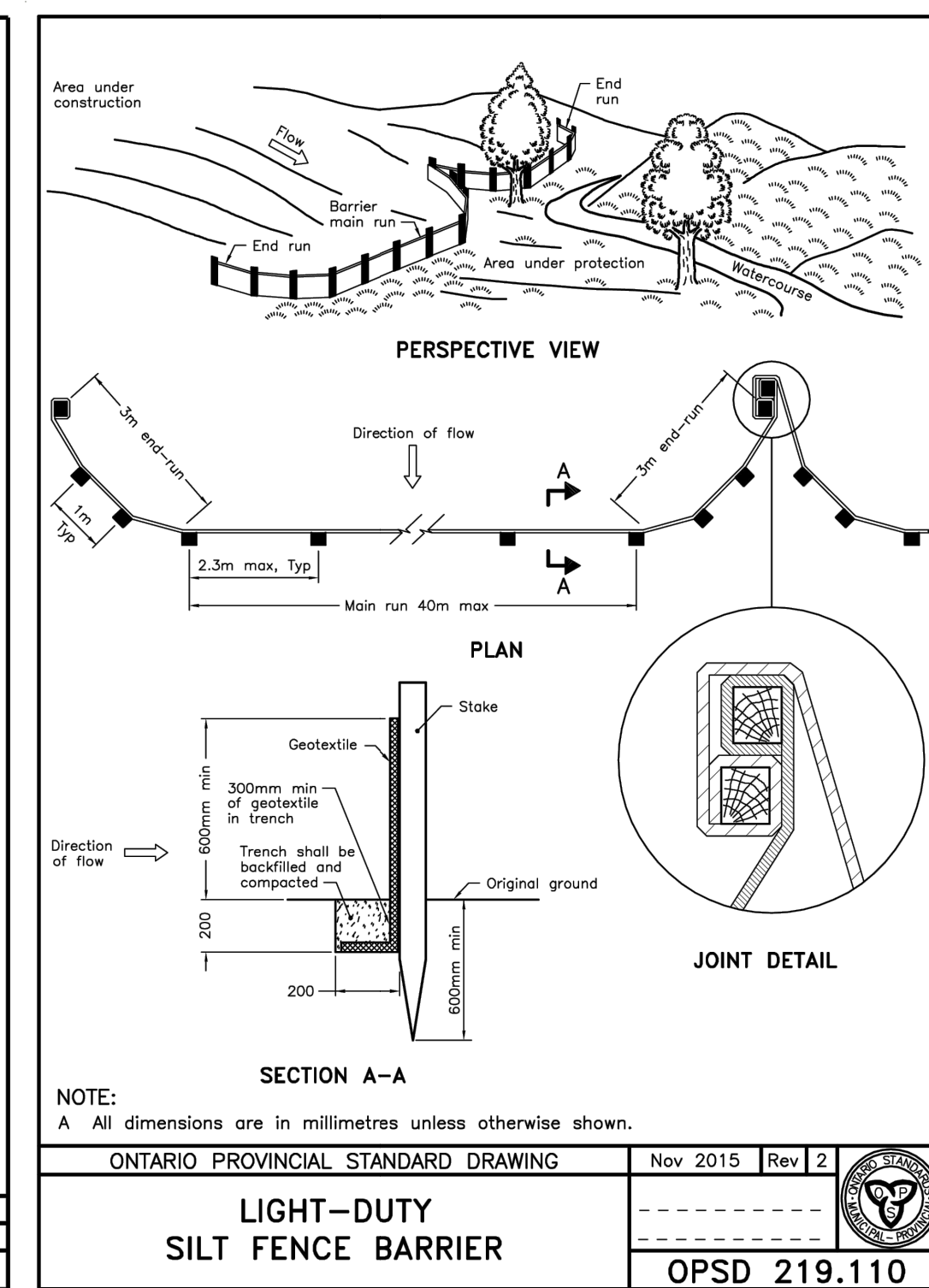
TYPICAL PRIVATE ACCESS ROAD
STREET #1
SECTION C-C



NOTES:

1. CONCRETE SHALL BE PLACED TO WITHIN 50mm OF FACE OF THE BELL.
2. BOND BREAKER TO BE USED BETWEEN CONCRETE AND FITTINGS.
3. ALL DIMENSIONS ARE IN MILLIMETERS UNLESS OTHERWISE SHOWN.
4. REFER TO W25.4 FOR ADDITIONAL REQUIREMENTS.
5. THRUST BLOCKS SHALL BE 20 MPa CONCRETE AND AS SHOWN ON ABOVE DRAWINGS UNLESS OTHERWISE DIRECTED BY THE CONTRACT ADMINISTRATOR. THE BLOCKS SHALL BE PLACED AGAINST THE THRUST FORCE AND SHALL PARTIALLY COVER THE FITTING TO DISTRIBUTE THE FORCE. THE SIDES OF THE BLOCK SHALL BE 80mm FROM THE JOINT ON EITHER SIDE OF THE BEND OR TEE.
6. THE CONCRETE WHERE POSSIBLE SHALL BE PLACED AGAINST UNDISTURBED SOIL AT THE BOTTOM AND SIDE OF THE TRENCH WHERE IT IS NOT POSSIBLE THE FILL BETWEEN THE RUNNING SURFACE AND THE UNDISTURBED SOIL MUST BE COMPACTED IN ACCORDANCE WITH D-205.
7. EXCEPT FOR THE ADDITION OF WATER CONCRETE FOR THRUST BLOCKS SHALL COME PREPARED FROM CONCRETE SUPPLIER, AS READY MIXED WITH A CONCRETE THIRST BLOCKS SHALL BE ADJUSTED TO THE CONTRACTOR'S REQUIREMENTS.

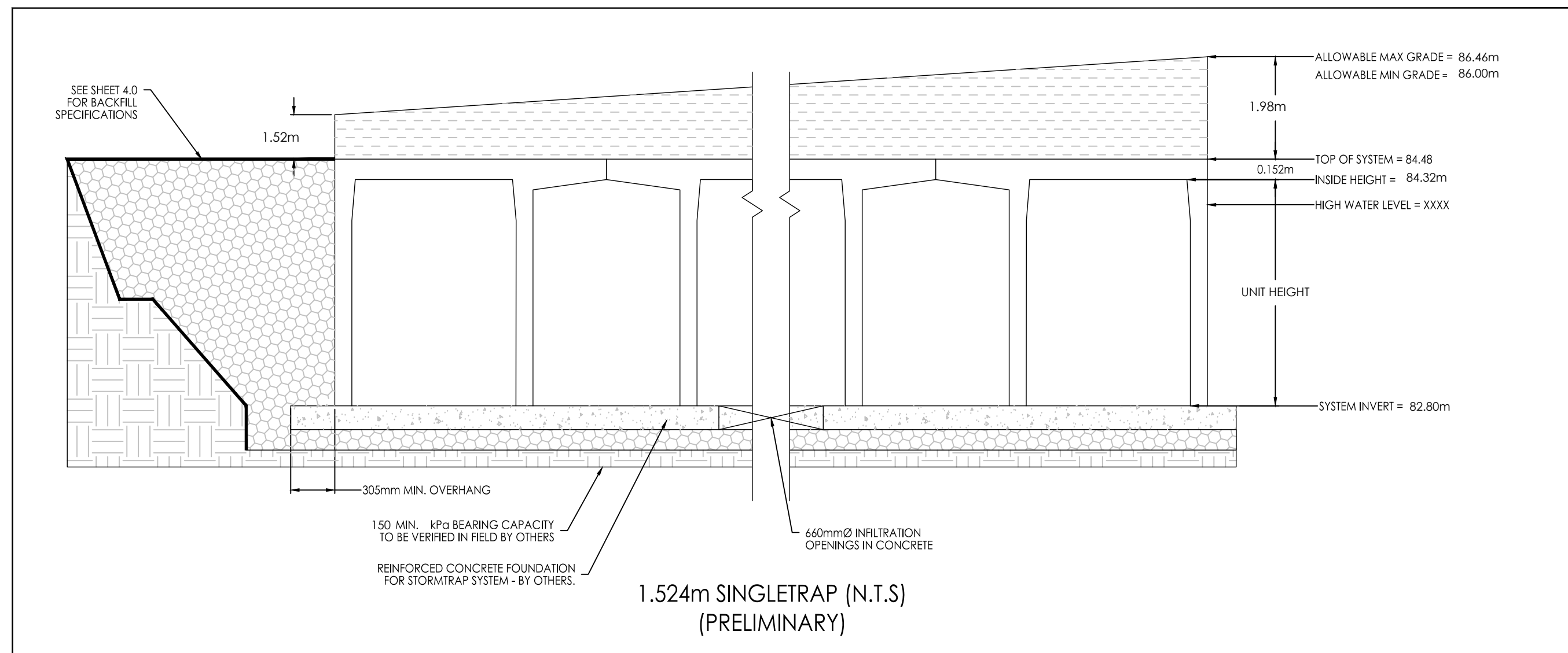
CONCRETE THRUST BLOCKS
FOR PVC AND DI PIPE
400mm AND UNDER



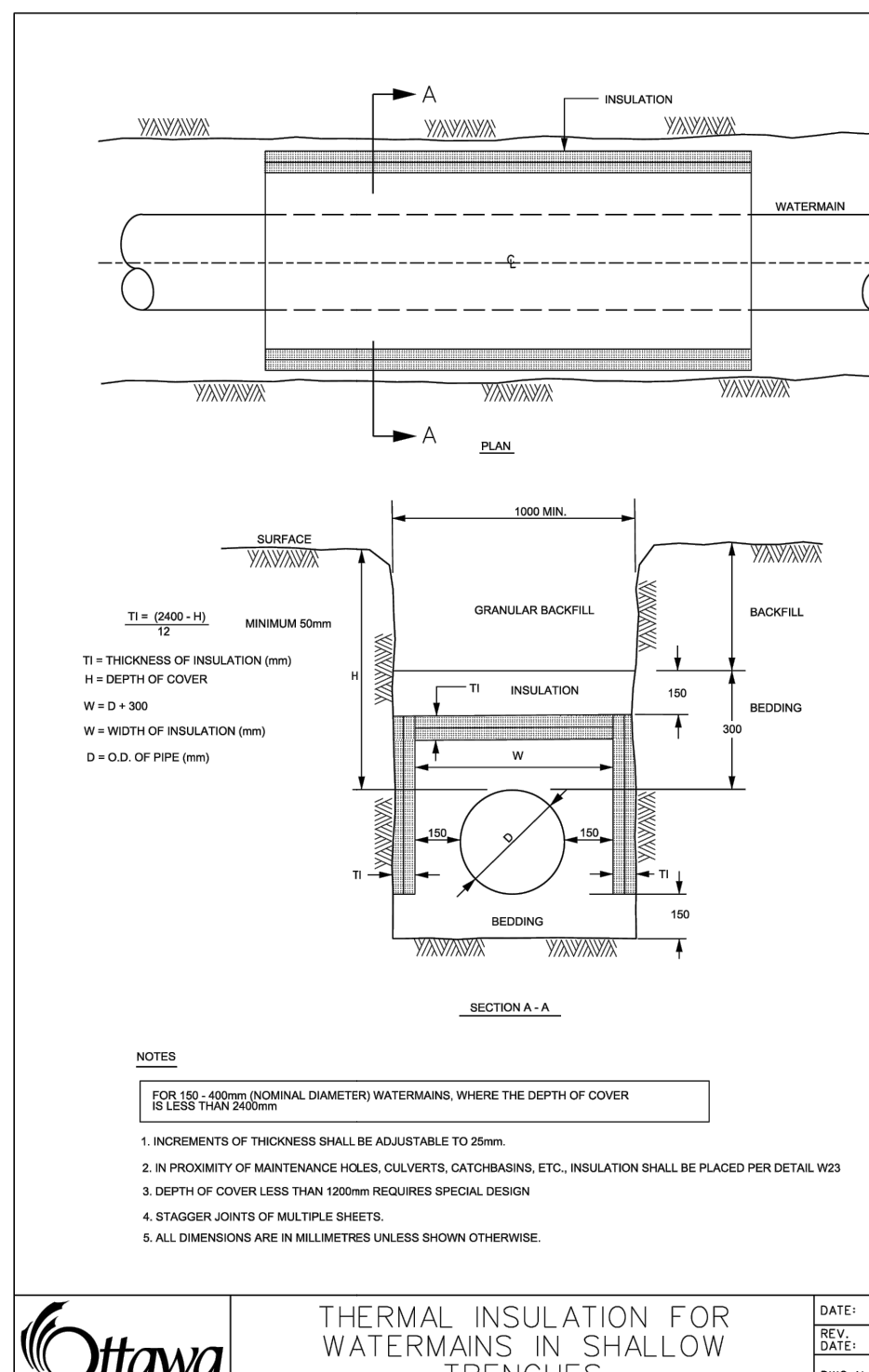
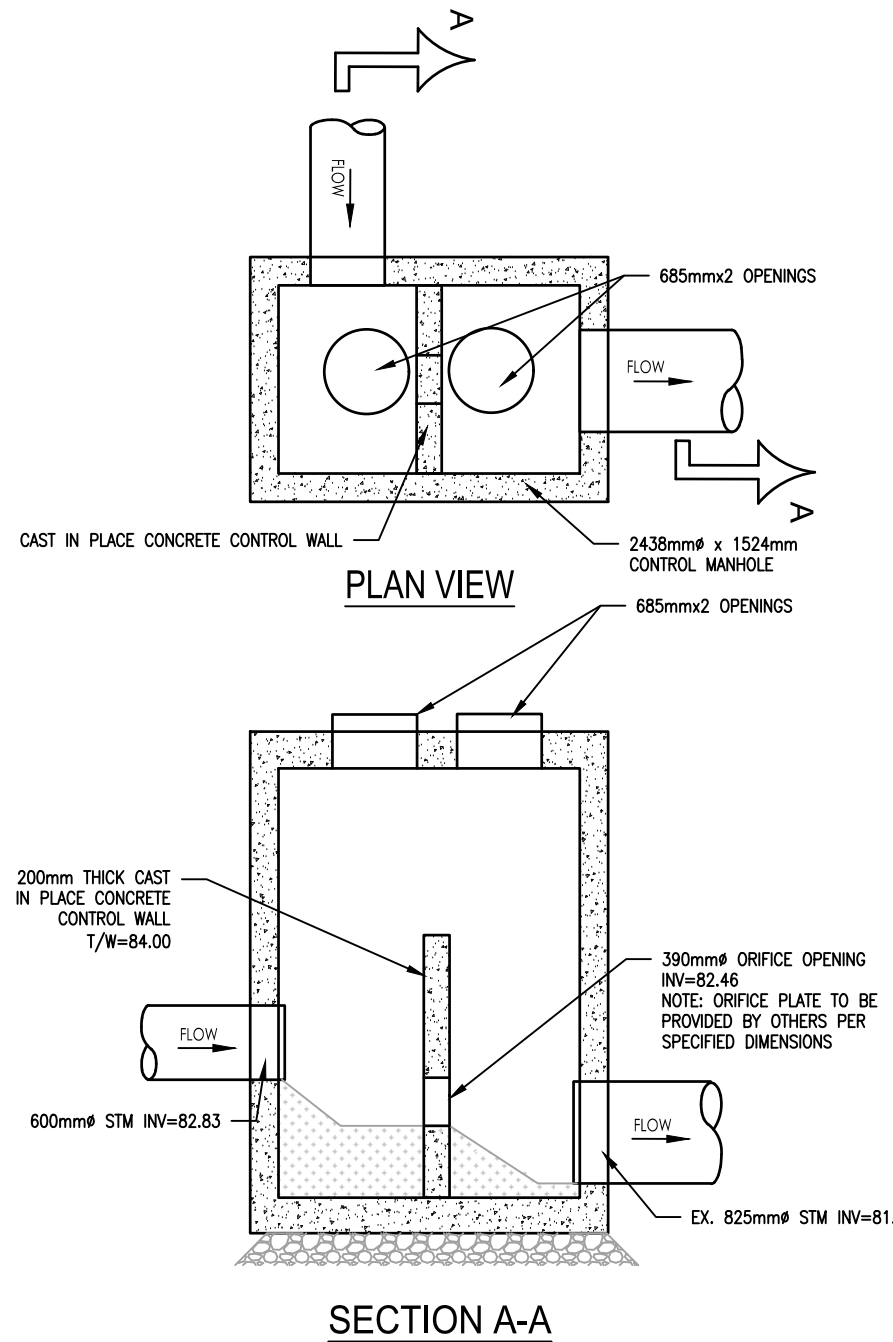
NOTE:

A All dimensions are in millimetres unless otherwise shown.

ONTARIO PROVINCIAL STANDARD DRAWING
Nov 2015 [Rev 2]
LIGHT-DUTY
SILT FENCE BARRIER
OPSD 219.110



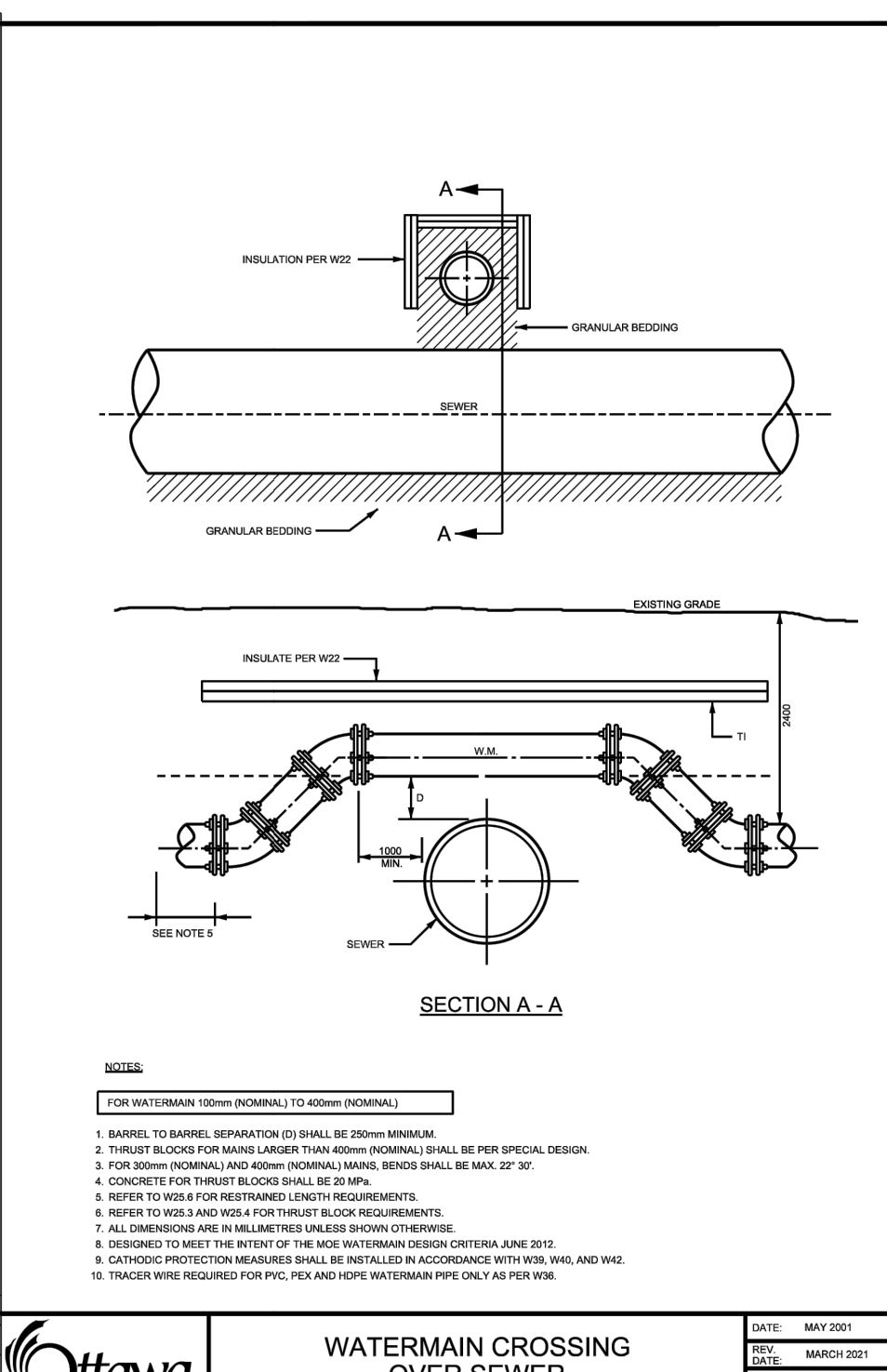
STM 100B
2438mmx1524mmØ OUTLET CONTROL DETAIL
(SEE STRUCTURAL DRAWINGS FOR DETAILS)
SCALE: N.T.S.



NOTES:

1. INSULATION OF THICKNESS SHALL BE ADJUSTABLE TO 20mm.
2. IN PROXIMITY OF MAINTENANCE HOLES, COLLECTORS, CATCHBASINS, ETC., INSULATION SHALL BE PLACED PER DETAIL W2.
3. DEPTH OF COVER LESS THAN 1200mm REQUIRES SPECIAL DESIGN.
4. STAGGER JOINTS OF MULTIPLE SHEETS.
5. ALL DIMENSIONS ARE IN MILLIMETERS UNLESS SHOWN OTHERWISE.

Thermal Insulation for
Watermains in Shallow
TRENCHES



NOTES:

1. BARRIERS TO BARREL REPAIRATION (2) SHALL BE 200mm MINIMUM.
2. THRUST BLOCKS FOR MAINS LARGER THAN 1000mm (NOMINAL) SHALL BE PER SPECIAL DESIGN.
3. FOR 1000mm (NOMINAL) AND ABOVE (NOMINAL) MAINS, BARRIERS SHALL BE MAX. 20' AP.
4. CONCRETE FOR THRUST BLOCKS SHALL BE 20 MPa.
5. REFER TO W25.4 FOR ADDITIONAL REQUIREMENTS.
6. REFER TO W25.4 AND W25.4 FOR THRUST BLOCK REQUIREMENTS.
7. ALL DIMENSIONS ARE IN MILLIMETERS UNLESS SHOWN OTHERWISE.
8. DESIGNED TO MEET THE INTENT OF THE 2000 WATERMAIN DESIGN CRITERIA JUNE 2010.
9. CATHODIC PROTECTION MEASURES SHALL BE INSTALLED IN ACCORDANCE WITH W25.4 AND W25.4.
10. TRACER WIRE REQUIRED FOR PVC, PE, AND HDPE WATERMAIN PIPE ONLY AS PER W25.4.

WATERMAIN CROSSING
OVER SEWER

3	ISSUED FOR CITY REVIEW	JP	PM	25.11.03
2	ISSUED FOR CITY REVIEW	JP	PM	25.07.04
1	ISSUED FOR CITY REVIEW	JP	PM	25.04.04
Revision		By	Appd.	YY.MM.DD

File Name:	160402127-08	JP	PM	JP	25.03.24
		Down	Chkd.	Dsgn.	YY.MM.DD

Permit-Seal



Client/Project
MATTAMY HOMES

WATERIDGE VILLAGE
BLOCK 105
OTTAWA, ON, CANADA

Title
DETAIL SHEET

Project No.	Scale
160402127	
Drawing No.	Sheet
	Revision

DS-2

6 of 11

3

PLAN # 19303