

EROSION AND SEDIMENT CONTROL NOTES:

PRIOR TO TOPSOIL STRIPPING, EARTHWORKS, OR UNDERGROUND CONSTRUCTION, EROSION AND SEDIMENT CONTROLS SHALL BE IMPLEMENTED TO THE SATISFACTION OF THE AUTHORITY HAVING JURISDICTION.

SEDIMENT CONTROL FENCE SHALL BE CLEANED AND MAINTAINED IN GOOD REPAIR BY CONTRACTOR.

SEDIMENT CONTROL FENCE TO REMAIN IN PLACE UNTIL THE WORKING AREA HAS BEEN STABILIZED AND REVEGETATED.

ACCUMULATED SEDIMENT TO BE REMOVED OFF SITE PRIOR TO THE REMOVAL OF SEDIMENT CONTROL FENCE.

EROSION AND SEDIMENT CONTROL MEASURES MAY BE MODIFIED IN THE FIELD AT THE DISCRETION OF THE CITY OF OTTAWA SITE INSPECTOR OR CONSERVATION AUTHORITY PERSONNEL.

CONTRACTOR MUST USE BEST MANAGEMENT PRACTICES (BMPs) FOR EROSION AND SEDIMENT CONTROL.

THE SILTATION CONTROL PLAN IS INTENDED TO ASSIST THE CONTRACTOR IN THE LAYOUT AND CONSTRUCTION OF THE SILTATION CONTROL FEATURES ONLY. THIS DRAWING SHALL NOT BE USED FOR CONSTRUCTION OF SITE SERVICES.

EROSION AND SEDIMENT CONTROL INSPECTION AND MONITORING SHALL BE CARRIED OUT BY THE CONTRACTOR USING THE GUIDELINES OUTLINED IN CAN/CSA-W202-18.

INSTALLATION AND MAINTENANCE OF THE ESC MEASURES SPECIFIED IN THIS PLAN SHALL BE CARRIED OUT USING THE GUIDELINES OUTLINED IN CSA W208:20 EROSION AND SEDIMENT CONTROL INSTALLATION AND MAINTENANCE.

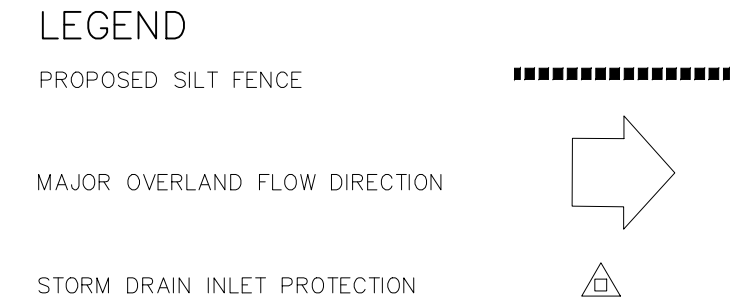
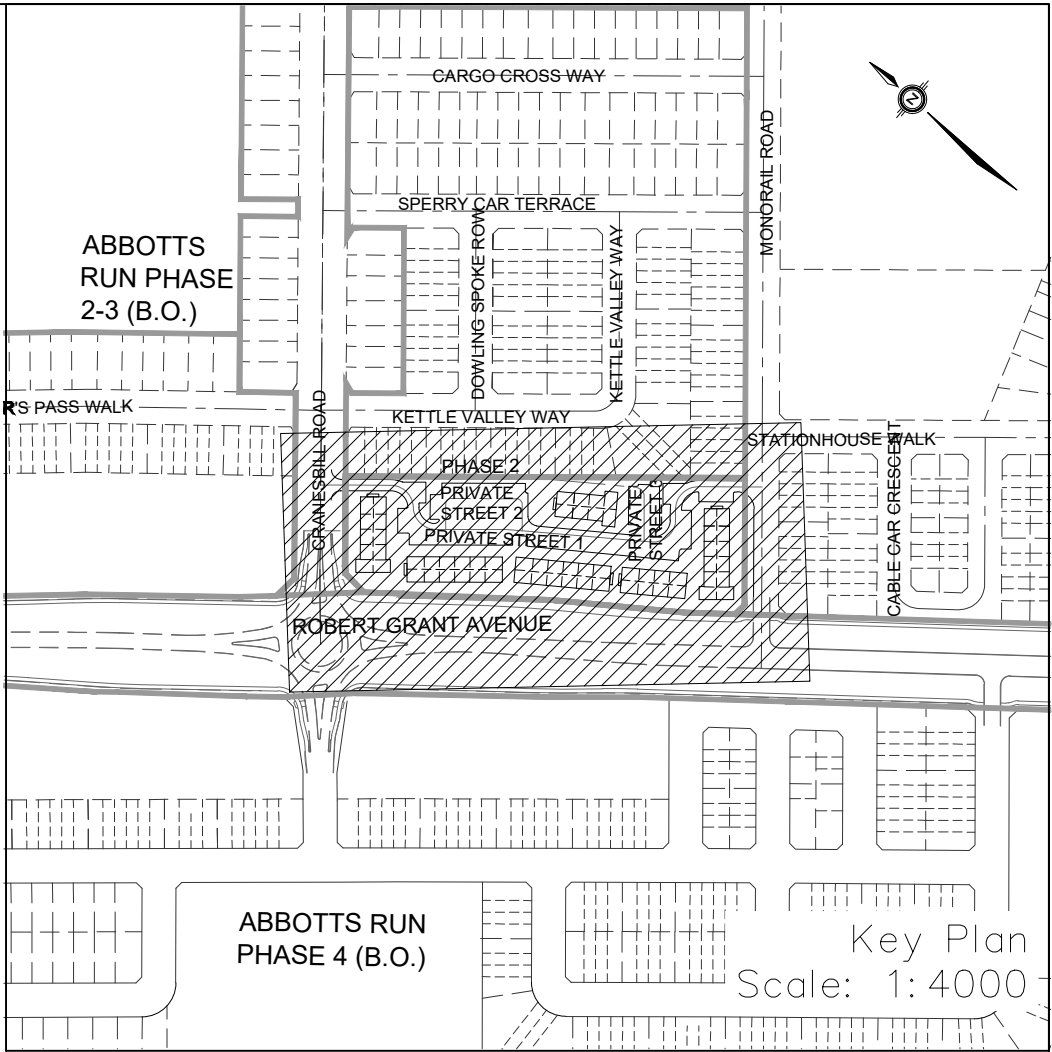
INSPECTION OF THE ESC MEASURES NEED TO BE PERFORMED BY A PERSONS WHO HAVE OBTAINED THE RELEVANT EDUCATION AND TRAINING AND HAVE DEMONSTRATED EXPERIENCE AND EXPERTISE IN THE AREAS RELATING TO THE WORK REQUIRED TO BE CARRIED OUT.

MONITORING OF SEDIMENT AND EROSION CONTROLS

MONITORING AND REPORTING TO BE COMPLETED IN ACCORDANCE WITH THE MINISTRY OF THE ENVIRONMENT, CONSERVATION, AND PARKS (MECP) AND RIDEAU VALLEY CONSERVATION AUTHORITY(RVCA) APPROVALS.

MAINTENANCE PROGRAM

ALL DAMAGED ESC MEASURES SHOULD BE REPAIRED AND/OR REPLACEMENT WITHIN 48 HOURS OF THE INSPECTION. THE ENVIRONMENTAL MONITOR IS REQUIRED TO SUBMIT UPDATES TO THE TOWN/ REGION/ CONSERVATION AUTHORITY BY EMAIL IN A TIMELY MANNER. SEDIMENT SHOULD BE REMOVED FROM THE SEDIMENT CONTROL FENCING ONCE SEDIMENT HAS ACCUMULATED TO A LEVEL OF ONE-THIRD THE HEIGHT OF FENCING OR TO A HEIGHT OF 30 cm. ANY AMOUNT OF ACCUMULATED SEDIMENT SHOULD BE REMOVED PRIOR TO THE REMOVAL OF THE CONTROL MEASURES.



TOPOGRAPHIC INFORMATION

TOPOGRAPHIC INFORMATION PROVIDED BY ANNIS, O'SULLIVAN, VOLLEBEKK LTD.
PROJECT NO. 21942-22 DATED SEPTEMBER 1, 2022

SITE PLAN INFORMATION

SITE PLAN PROVIDED BY SRN ARCHITECTS, DATED ON OCTOBER 20, 2025.

ELEVATION NOTE

ELEVATIONS ARE GEODETIC AND ARE REFERRED TO THE CGVD28 GEODETIC DATUM, DERIVED FROM VERTICAL CONTROL MONUMENT NO. BM8BU502.
ELEVATION = 106.039 m

No.	BY	DATE	DESCRIPTION
2	S.L.M.	2025-10-24	2nd SUBMISSION
1	S.L.M.	2025-06-20	1st SUBMISSION

CITY OF OTTAWA

PROJECT No. 1295_Block13

Minto Group

ABBOTT'S RUN
BLOCK 13

120 Iber Road, Unit 103
Stittsville, ON K2S 1E9
Tel: (613) 836-0856
Fax: (613) 836-7183
www.DSEL.ca

EROSION AND SEDIMENT CONTROL PLAN
STAGE 2

DRAWN BY:	E.D.	CHECKED BY:	S.L.M.	SHEET NO.
DESIGNED BY:	E.D.	CHECKED BY:	S.L.M.	19 OF 19
SCALE:	1:500	DATE:	JUNE 2025	