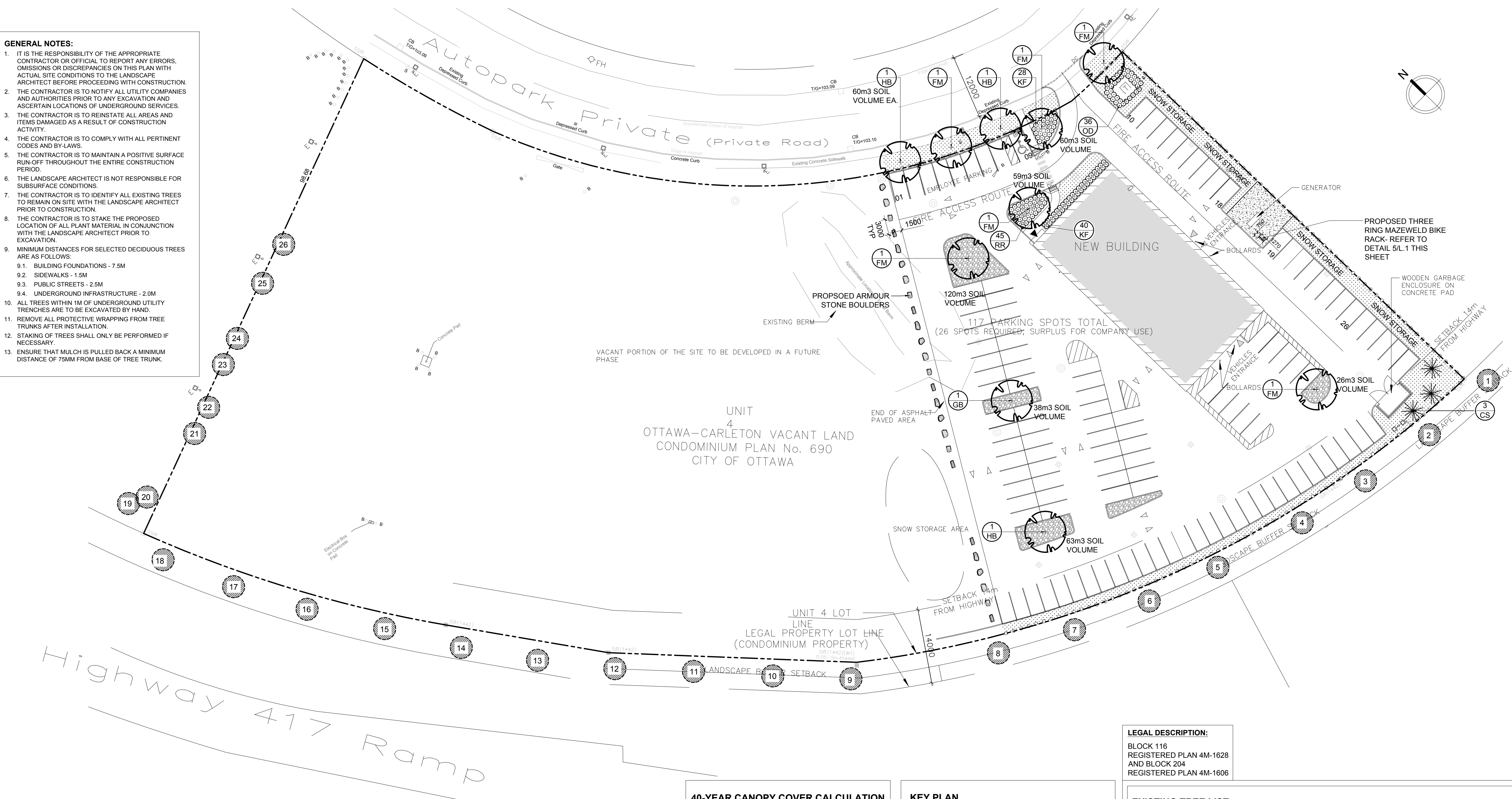
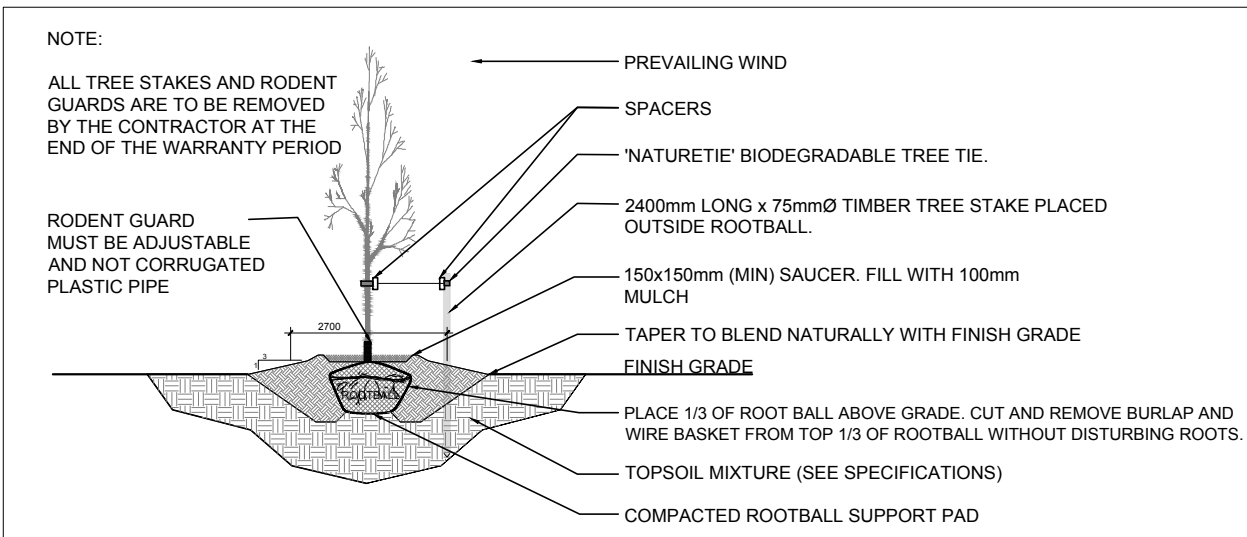


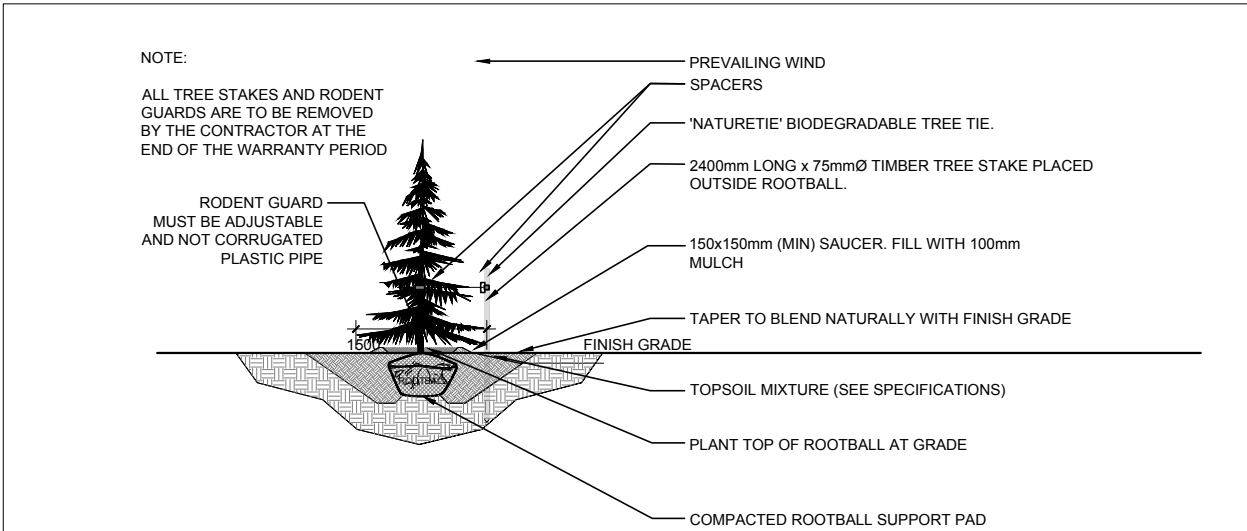
- GENERAL NOTES:**
- IT IS THE RESPONSIBILITY OF THE APPROPRIATE CONTRACTOR OR OFFICIAL TO REPORT ANY ERRORS, OMISSIONS OR DISCREPANCIES ON THIS PLAN WITH ACTUAL SITE CONDITIONS TO THE LANDSCAPE ARCHITECT BEFORE PROCEEDING WITH CONSTRUCTION.
 - THE CONTRACTOR IS TO NOTIFY ALL UTILITY COMPANIES AND AUTHORITIES PRIOR TO ANY EXCAVATION AND ASCERTAIN LOCATIONS OF UNDERGROUND SERVICES.
 - THE CONTRACTOR IS TO REINSTATE ALL AREAS AND ITEMS DAMAGED AS A RESULT OF CONSTRUCTION ACTIVITY.
 - THE CONTRACTOR IS TO COMPLY WITH ALL PERTINENT CODES AND BY-LAWS.
 - THE CONTRACTOR IS TO MAINTAIN A POSITIVE SURFACE RUN-OFF THROUGHOUT THE ENTIRE CONSTRUCTION PERIOD.
 - THE LANDSCAPE ARCHITECT IS NOT RESPONSIBLE FOR SUBSURFACE CONDITIONS.
 - THE CONTRACTOR IS TO IDENTIFY ALL EXISTING TREES TO REMAIN ON SITE WITH THE LANDSCAPE ARCHITECT PRIOR TO CONSTRUCTION.
 - THE CONTRACTOR IS TO STAKE THE PROPOSED LOCATION OF ALL PLANT MATERIAL IN CONJUNCTION WITH THE LANDSCAPE ARCHITECT PRIOR TO EXCAVATION.
 - MINIMUM DISTANCES FOR SELECTED DECIDUOUS TREES ARE AS FOLLOWS:
 - BUILDING FOUNDATIONS - 7.5M
 - SIDEWALKS - 1.5M
 - PUBLIC STREETS - 2.5M
 - UNDERGROUND INFRASTRUCTURE - 2.0M
 - ALL TREES WITHIN 1M OF UNDERGROUND UTILITY TRENCHES ARE TO BE EXCAVATED BY HAND.
 - REMOVE ALL PROTECTIVE WRAPPING FROM TREE TRUNKS AFTER INSTALLATION.
 - STAKING OF TREES SHALL ONLY BE PERFORMED IF NECESSARY.
 - ENSURE THAT MULCH IS PULLED BACK A MINIMUM DISTANCE OF 75MM FROM BASE OF TREE TRUNK.



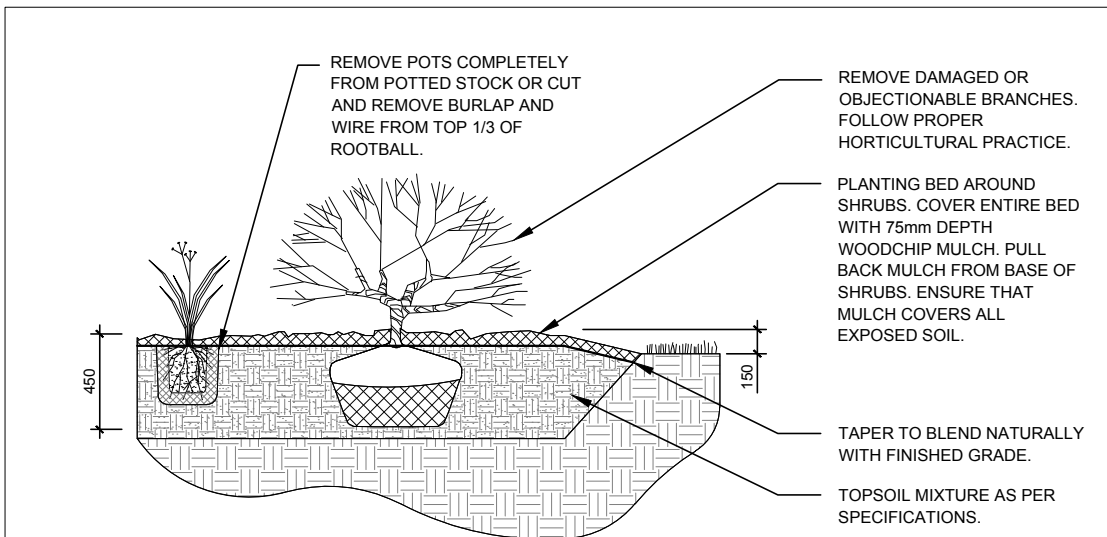
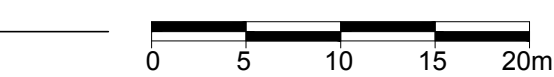
1 TREE CONSERVATION REPORT & LANDSCAPE PLAN
SCALE: 1:400



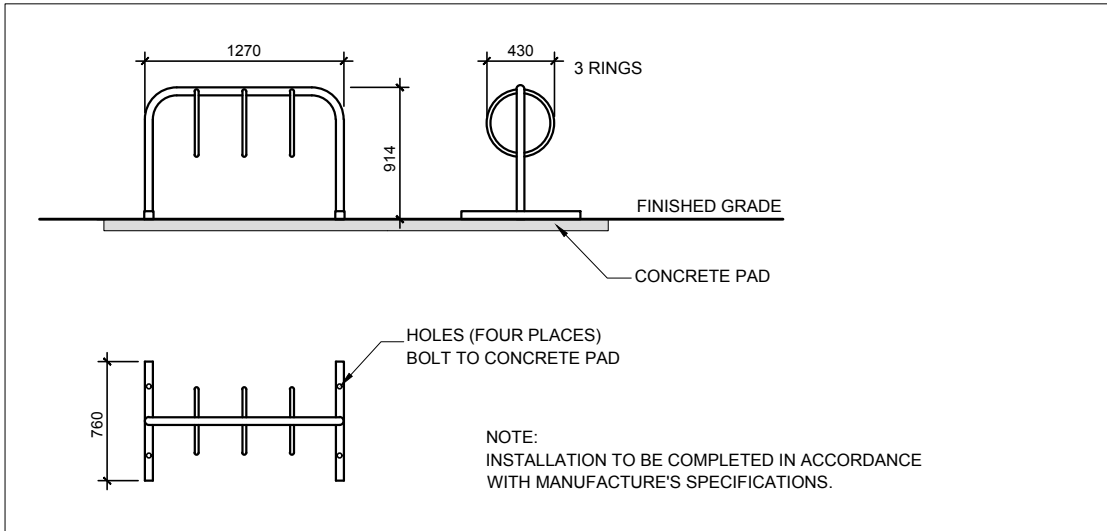
2 DECIDUOUS TREE PLANTING
SCALE: NTS



3 CONIFEROUS TREE PLANTING
SCALE: NTS



4 SHRUB / ORNAMENTAL GRASS PLANTING
SCALE: NTS



5 THREE RING MAZEWELD BIKE RACK
SCALE: NTS

40-YEAR CANOPY COVER CALCULATION
2500 PALLADIUM DRIVE

66,783 m² site area
(10) large trees proposed (154m² ea.)
(3) large coniferous trees proposed (79m² ea.)
(8) large trees to remain (154m² ea.)

=3,009m² canopy cover =4.5% canopy cover

*Large deciduous trees calculated at 14m spread, large coniferous calculated at 10m spread

KEY PLAN
NTS



PROPOSED PLANT LIST
QTY KEY

KEY	QTY	BOTANICAL NAME	COMMON NAME	SIZE	CONDITION	REMARKS
TREES						
CS	3	Picea pungens	Colorado Spruce	2.0m Ht.	B&B	Male tree
*FM	6	Acer x freemanii	Freeman's Maple	50mm cal.	B&B	
GB	1	Ginkgo biloba	Maidenhair Tree	50mm cal.	B&B	
*HB	3	Celtis occidentalis	Hackberry	50mm cal.	B&B	
SHRUBS						
RR	45	Rosa rugosa	Rugosa Rose	800mm ht.	Potted	Space 1000mm o.c.
ORNAMENTAL GRASSES						
KF	68	Calamagrostis 'Karl Foerster'	Feather Reed Grass	250mm pot.	Potted	Space 800mm o.c.
OD	36	Calamagrostis 'Overdam'	Overdam Grass	250mm pot.	Potted	Space 800mm o.c.

*INDICATES NATIVE SPECIES. ALL TREES SHRUBS AND ORNAMENTAL GRASSES ARE PLANTED ON PRIVATE PROPERTY WITH THE EXCEPTION OF TWO HACKBERRY AND TWO FREEMAN'S MAPLES.

LEGAL DESCRIPTION:
BLOCK 116
REGISTERED PLAN 4M-1628
AND BLOCK 204
REGISTERED PLAN 4M-1606

EXISTING TREE LIST

KEY	QTY	BOTANICAL NAME	COMMON NAME	SIZE	CONDITION	ACTION	OWNERSHIP
1	1	Quercus rubra	Red Oak	200mm DBH	GOOD	To remain	2500 Palladium
2	1	Quercus rubra	Red Oak	220mm DBH	GOOD	To remain	2500 Palladium
3	1	Quercus rubra	Red Oak	210mm DBH	GOOD	To remain	2500 Palladium
4	1	Quercus rubra	Red Oak	220mm DBH	GOOD	To remain	2500 Palladium
5	1	Quercus rubra	Red Oak	250mm DBH	GOOD	To remain	2500 Palladium
6	1	Quercus rubra	Red Oak	230mm DBH	GOOD	To remain	2500 Palladium
7	1	Quercus macrocarpa	Bur Oak	180mm DBH	GOOD	To remain	2500 Palladium
8	1	Quercus rubra	Red Oak	210mm DBH	GOOD	To remain	2500 Palladium
9	1	Quercus macrocarpa	Bur Oak	250mm DBH	GOOD	To remain	2500 Palladium
10	1	Quercus macrocarpa	Bur Oak	210mm DBH	GOOD	To remain	2500 Palladium
11	1	Quercus rubra	Red Oak	250mm DBH	GOOD	To remain	2500 Palladium
12	1	Quercus rubra	Red Oak	260mm DBH	GOOD	To remain	2500 Palladium
13	1	Quercus rubra	Red Oak	190mm DBH	GOOD	To remain	2500 Palladium
14	1	Quercus rubra	Red Oak	180mm DBH	GOOD	To remain	2500 Palladium
15	1	Quercus rubra	Red Oak	280mm DBH	GOOD	To remain	2500 Palladium
16	1	Quercus rubra	Red Oak	250mm DBH	GOOD	To remain	2500 Palladium
17	1	Quercus rubra	Red Oak	250mm DBH	GOOD	To remain	2500 Palladium
18	1	Quercus rubra	Red Oak	240mm DBH	GOOD	To remain	2500 Palladium
19	1	Picea pungens	Colorado Spruce	350mm DBH	GOOD	To remain	2500 Palladium
20	1	Picea pungens	Colorado Spruce	340mm DBH	GOOD	To remain	2500 Palladium
21	1	Quercus rubra	Red Oak	160mm DBH	GOOD	To remain	2500 Palladium
22	1	Quercus rubra	Red Oak	190mm DBH	GOOD	To remain	2500 Palladium
23	1	Picea pungens	Colorado Spruce	330mm DBH	GOOD	To remain	2500 Palladium
24	1	Picea pungens	Colorado Spruce	350mm DBH	GOOD	To remain	2500 Palladium
25	1	Picea pungens	Colorado Spruce	310mm DBH	GOOD	To remain	2500 Palladium
26	1	Picea pungens	Colorado Spruce	290mm DBH	GOOD	To remain	2500 Palladium

CLIENT
TONY GRAHAM AUTOMOTIVE GROUP

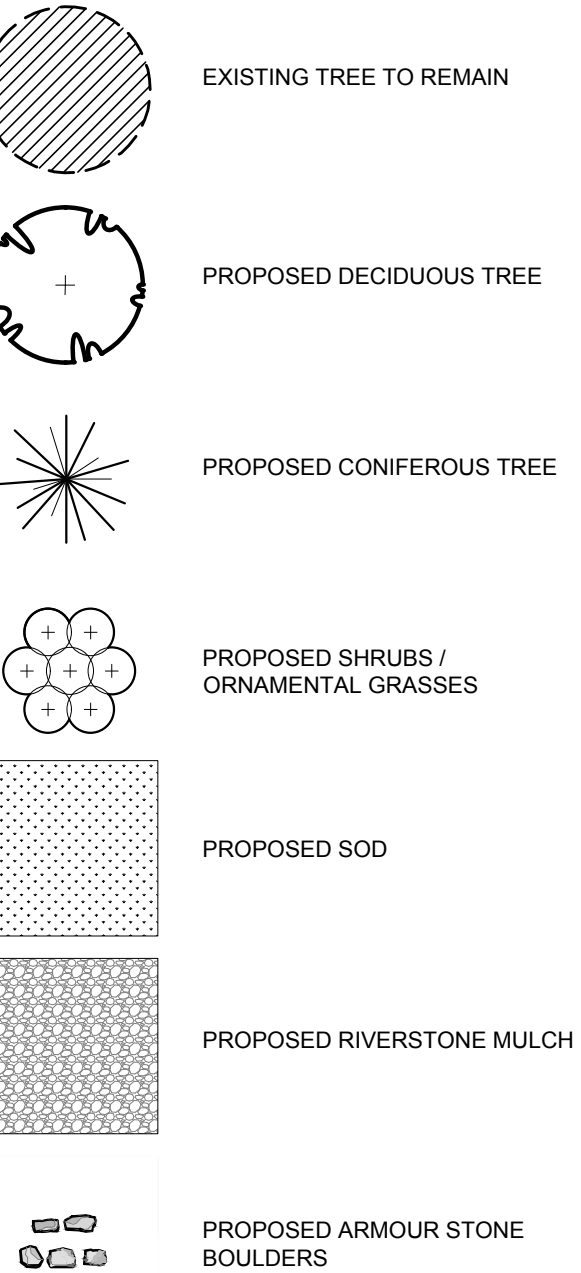
CONSULTANTS
ARCHITECTS: **VANDEMBERG & WILDEBOER ARCHITECTS INC.**

160 Flamborough Way, Kanata ON K2K 3H9
Tel.: (613) 287-0144

CIVIL ENGINEERS: **D.B. GRAY ENGINEERING INC.**

700 Long Point Circle,
Ottawa ON K1T 4E9
Tel.: (613) 425-8044

LEGEND

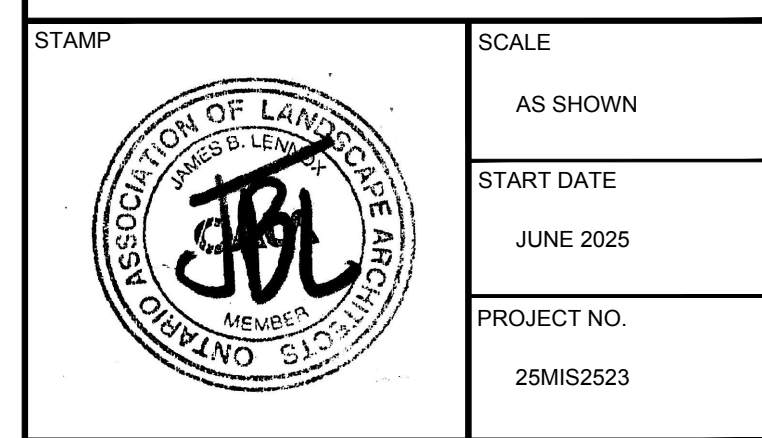


2	REVISED PER CITY COMMENTS	07/29/2025	ML	JL
1	ISSUED FOR SITE PLAN CONTROL	06/27/2025	ML	JL
No.	Issue	Date	ML	JL
		MM/DD/YY	DR	CK

JAMES B. LENNOX & ASSOCIATES INC.
LANDSCAPE ARCHITECTS
3332 CARLING AVE. OTTAWA, ONTARIO K2H 5A8
Tel. (613) 722-5168 Fax. (613) 722-3942

PROJECT
2500 PALLADIUM PREP SHOP
2500 PALLADIUM DRIVE, OTTAWA ON

DRAWING
TREE CONSERVATION REPORT AND LANDSCAPE PLAN



STAMP
SCALE
AS SHOWN
START DATE
JUNE 2025
PROJECT NO.
25MIS2523
DRAWING NO.
L.1
PLOT SIZE ARCH-D