



- GENERAL NOTES:**
1. ACER RUBRUM, CELTIS OCCIDENTALIS, AND QUERCUS RUBRA TO BE SPRING DUG SPECIMENS AND PLANTED IN THE SPRING ONLY.
 2. THE LOCATION OF THE TREES SHOWN ON THIS PLAN IS APPROXIMATE AND SHALL NOT BE SCALED FROM THIS DRAWING. THIS PLAN MUST BE READ IN CONJUNCTION WITH THE APPROVED CUP AND CITY CROSS SECTIONS.
 3. CONTRACTOR SHALL ENSURE THAT ALL UTILITY LOCATIONS ARE OBTAINED PRIOR TO ANY EXCAVATION FOR LANDSCAPING.
 4. LOCATION OF ALL PLANT MATERIALS TO BE STAKED BY THE CONTRACTOR AND VERIFIED IN THE FIELD BY LANDSCAPE ARCHITECT & CITY OF OTTAWA PRIOR TO THE EXCAVATION OF PITS.
 5. ALL PLANT MATERIAL SHALL BE NURSERY GROWN STOCK UNLESS OTHERWISE NOTED.
 6. TREES TO HAVE A MINIMUM 1800 CLEAR STEM ABOVE GRADE.
 7. PLACE SOD ON A MINIMUM 150mm TOPSOIL.
 8. CONTRACTOR TO MAKE GOOD ALL EXISTING AREAS DAMAGED BY HIS WORK TO THE SATISFACTION OF THE CITY OF OTTAWA.
 9. THE CITY WILL BE NOTIFIED IF ANY TREES CANNOT BE LOCATED OR PLANTED DUE TO CONFLICTS WITH UTILITIES OR DRIVEWAYS. THE REQUIRED TREES NOT PLANTED ARE SUBJECT TO TREE BANKING. THE FINAL NUMBER OF TREES TO BE BANKED WILL BE PROVIDED TO THE CITY FOLLOWING ALL PLANTINGS.
 10. ALL PLANT MATERIAL SHALL BE WARRANTED FOR TWO YEARS FROM THE DATE OF PERFORMANCE ACCEPTANCE AS DETERMINED BY THE CITY OF OTTAWA.
 11. PERIODIC REVIEWS OF PLANTING SHALL BE CARRIED OUT BY THE LANDSCAPE ARCHITECT.
 12. PLANTINGS TO BE STAKED FOR APPROVAL PRIOR TO CONSTRUCTION
 13. CITY GRASS CUTTING RESPONSIBILITIES FOR SODDED AREAS SHALL BEGIN FOLLOWING PERFORMANCE ACCEPTANCE INSPECTION BY THE LANDSCAPE ARCHITECT AND THE CITY. ACCEPTANCE WILL BE PROVIDED ONLY IF:
 - SOD IS PROPERLY ESTABLISHED.
 - TURF IS FREE OF DEAD SPOTS AND WEEDS.
 - SODDED AREAS HAVE BEEN CUT WITHIN 24 HOURS PRIOR TO ACCEPTANCE INSPECTION.
 - MINIMUM OF 3 WEEKS HAVE ELAPSED FOLLOWING LAYING OF SOD.
 - A MINIMUM OF TWO CUTS HAVE TAKEN PLACE.
 - SODDED AREAS HAVE BEEN TOP-DRESSED, SEEDED AND AERATED
 14. STREET TREE REQUIREMENT BASED ON DRAFT CONDITIONS FOR FINAL APPROVAL:
 - 1 TREE PER EXTERIOR TOWNHOUSE (CORNER) LOT
 - 2 TREES PER 3 MULTIPLE-UNITS TOWNHOUSE
 - 2 TREES PER 4 MULTIPLE-UNITS TOWNHOUSE
 - 3 TREES PER 5 MULTIPLE-UNITS TOWNHOUSE

EXTERIOR TOWNHOUSE (CORNER) LOT (00): 00 TREES
3 MULTIPLE-UNITS TOWNHOUSE (1): 2 TREES
4 MULTIPLE-UNITS TOWNHOUSE (5): 10 TREES
5 MULTIPLE-UNITS TOWNHOUSE (2): 6 TREES

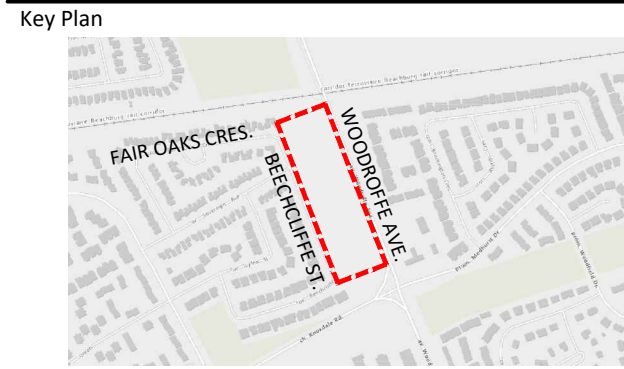
TOTAL NUMBER OF TREES REQUIRED: 18
TOTAL NUMBER OF TREES ON PLAN: 19
DIFFERENCE: +1
 15. STREET TREE PLANTING GUIDELINE
NOTE: APPROVED CROSS SECTIONS SHALL TAKE PRECEDENCE
 - 4.5m - STREET LIGHT (SMALL TREE <7m MATURE HT.)
 - 2.5m - STREET LIGHT (MEDIUM/LARGE TREE >7m MATURE HT.)
 - 3.0m - HYDRO TRANSFORMER
 - 1.5m - PATH, DRIVEWAY, FENCE, SOUND WALL
 - 4.5m - CONIFERS MINIMUM SETBACK FROM CURB
 - 2.5m - FIRE HYDRANTS
 - 1.5m - WATER SERVICE / CURB STOP
 - 1.0m - BELL / CABLE PEDESTALS

- TREE PLANTING IN MARINE CLAY SOILS**
- THE LANDSCAPE CONSIDERATIONS CONTAINED WITHIN SEC. 6.8 OF PATERSON GROUP'S GEOTECHNICAL INVESTIGATION, DATED MAY 27, 2025.
1. THIS LANDSCAPE PLAN CONFORMS WITH THE TREE-TO-FOUNDATION SETBACK, SOIL VOLUME, AND SURFACE-GRADING REQUIREMENTS OUTLINED IN THE CITY OF OTTAWA'S GUIDELINES FOR TREE PLANTING IN SENSITIVE MARINE CLAY SOILS (2017), BASED ON THE FINDINGS OUTLINED IN THE PROJECT GEOTECHNICAL REPORT BY PATERSON GROUP (REPORT PG7521-1 DATED MAY 27, 2025).
 2. ADDITIONAL REQUIREMENTS OUTLINED IN THE CITY OF OTTAWA'S GUIDELINES FOR TREE PLANTING IN SENSITIVE MARINE CLAY SOILS (2017), INCLUDING USF DEPTH, FOUNDATION WALL REINFORCEMENT, AND SUBDIVISION GRADING, SHOULD BE CONFIRMED BY THE PROJECT ENGINEER(S).
 3. THE CONTRACTOR SHOULD REPORT ANY DISCREPANCIES TO THE CONTRACT ADMINISTRATOR BEFORE PLANTING TREES.
 4. CITY OF OTTAWA: GUIDELINES FOR TREE PLANTING IN SENSITIVE MARINE CLAY SOILS (2017): THE FOLLOWING GUIDELINES ARE PRIMARILY FOCUSED ON SMALL AND MEDIUM SIZE STREET TREES. HOWEVER, LARGE TREES (MATURE HEIGHT OVER 14M) CAN STILL BE PLANTED IN AREAS OF SMC SOILS PROVIDED A TREE TO FOUNDATION SETBACK EQUAL TO THE FULL MATURE HEIGHT OF THE TREE CAN BE PROVIDED (E.G. IN A PARK OR OTHER GREEN SPACE). FOR STREET TREES IN THE ROAD RIGHT-OF-WAY WHERE SMC SOILS HAVE BEEN IDENTIFIED, THE TREE TO FOUNDATION SETBACKS MAY BE REDUCED TO 4.5M FOR SMALL (MATURE TREE HEIGHT UP TO 7.5M) AND MEDIUM SIZE TREES (MATURE TREE HEIGHT 7.5M-14M) PROVIDED ALL OF THE FOLLOWING SIX CONDITIONS ARE MET:
 - 4.1. THE MODIFIED PLASTICITY INDEX OF THE SOIL BETWEEN THE UNDERSIDE OF FOOTING (USF) AND A DEPTH OF 3.5M GENERALLY DOES NOT EXCEED 40%. THIS CORRESPONDS TO SOILS WITH LOW/MEDIUM POTENTIAL FOR SOIL VOLUME CHANGE. CLAY SOILS THAT EXCEED THE 40% PLASTICITY INDEX ARE CONSIDERED TO HAVE HIGH POTENTIAL FOR SOIL VOLUME CHANGE. FOR THESE WORST-CASE SOILS, THE SETBACKS AND TREE PLANTING RESTRICTIONS REMAIN UNCHANGED FROM THE 2005 CLAY SOILS POLICY (TREE SETBACK MUST EQUAL THE MATURE HEIGHT OF THE TREE - I.E. 7.5M SETBACK FOR SMALL TREES).
 - 4.2. THE USF IS 2.1M OR GREATER BELOW THE LOWEST FINISHED GRADE. NOTE: THIS FOOTING LEVEL MUST BE SATISFIED FOR FOOTINGS WITHIN 10M OF THE TREE, AS MEASURED FROM THE CENTRE OF THE TREE TRUNK, AND VERIFIED BY MEANS OF THE GRADING PLAN AS INDICATED IN THE PROCEDURAL CHANGES BELOW.
 - 4.3. A SMALL SIZE TREE MUST BE PROVIDED WITH A MINIMUM OF 25M3 OF AVAILABLE SOIL VOLUME, AS DETERMINED BY A LANDSCAPE ARCHITECT. A MEDIUM SIZE TREE MUST BE PROVIDED WITH A MINIMUM OF 30M3 OF AVAILABLE SOIL VOLUME, AS DETERMINED BY A LANDSCAPE ARCHITECT. THE DEVELOPER WILL ENSURE THE SOIL IS GENERALLY UNCOMPACTED WHEN BACKFILLING IN STREET TREE PLANTING LOCATIONS.
 - 4.3.1. THE SOIL VOLUME CALCULATION MUST BE BASED ON A DEPTH OF 1.5M BELOW FINISHED GRADE (E.G. 5M LENGTH X 4M WIDTH AT SURFACE X 1.5M DEPTH = 30M3). IT MAY INCLUDE LANDS IN THE RIGHT-OF-WAY AND ON PRIVATE PROPERTY, BUT MUST SUBTRACT THE VOLUME OF SHALLOW UTILITY TRENCHES (I.E. VOLUME OF SHALLOW UTILITY TRENCHES CANNOT COUNT TOWARDS MINIMUM SOIL VOLUME).
 - 4.4. THE TREE SPECIES MUST BE SMALL TO MEDIUM SIZE, AS CONFIRMED BY A LANDSCAPE ARCHITECT IN THE LANDSCAPE PLAN.
 - 4.5. THE FOUNDATION WALLS ARE TO BE REINFORCED AT LEAST NOMINALLY (MINIMUM OF TWO UPPER AND TWO LOWER 15M BARS IN THE FOUNDATION WALL) TO PROVIDE DUCTILITY AS DESCRIBED IN THE GEOTECHNICAL REPORT.
 - 4.6. GRADING SURROUNDING THE TREE MUST PROMOTE DRAINING TO THE TREE ROOT ZONE (IN SUCH A MANNER AS NOT TO BE DETRIMENTAL TO THE TREE), AS NOTED ON THE SUBDIVISION GRADING PLAN.

TREE SOIL VOLUMES		
TREE TYPE/SIZE	SINGLE TREE SOIL VOLUME	MULTIPLE TREE SOIL VOLUME (m3/TREE)
ORNAMENTAL	15	9
COLUMNAR	15	9
SMALL	20	12
MEDIUM	25	15
LARGE	30	18
CONIFER	25	15

PLANT LIST						
KEY	BOTANICAL NAME	COMMON NAME	QUANTITY	SIZE	REMARKS	NATIVE
DECIDUOUS TREES - MEDIUM (8-14M HEIGHT)						
AG	AESCULUS GLABRA	OHIO BUCKEYE	4	50mm	B&B	Y
CC	CARPINUS CAROLINIANA	BLUE BEECH	3	50mm	B&B	Y
CK	CLADRASTIC KENTUKEA	YELLOW-WOOD	2	50mm	B&B	Y
CO	CELTIS OCCIDENTALIS	HACKBERRY	3	50mm	B&B	Y
GT	GLEDTISIA TRIACANTHOS	HONEY LOCUST	3	50mm	B&B	Y
OV	OSTRYA VIRGINIANA	IRONWOOD	4	50mm	B&B	Y
			19			

Contractor shall check all dimensions on the work and report any discrepancy to the Landscape Architect before proceeding. All drawings and specifications are the property of the Landscape Architect and must be returned at the completion of the work. This drawing is not to be used for construction until signed by the Landscape Architect.

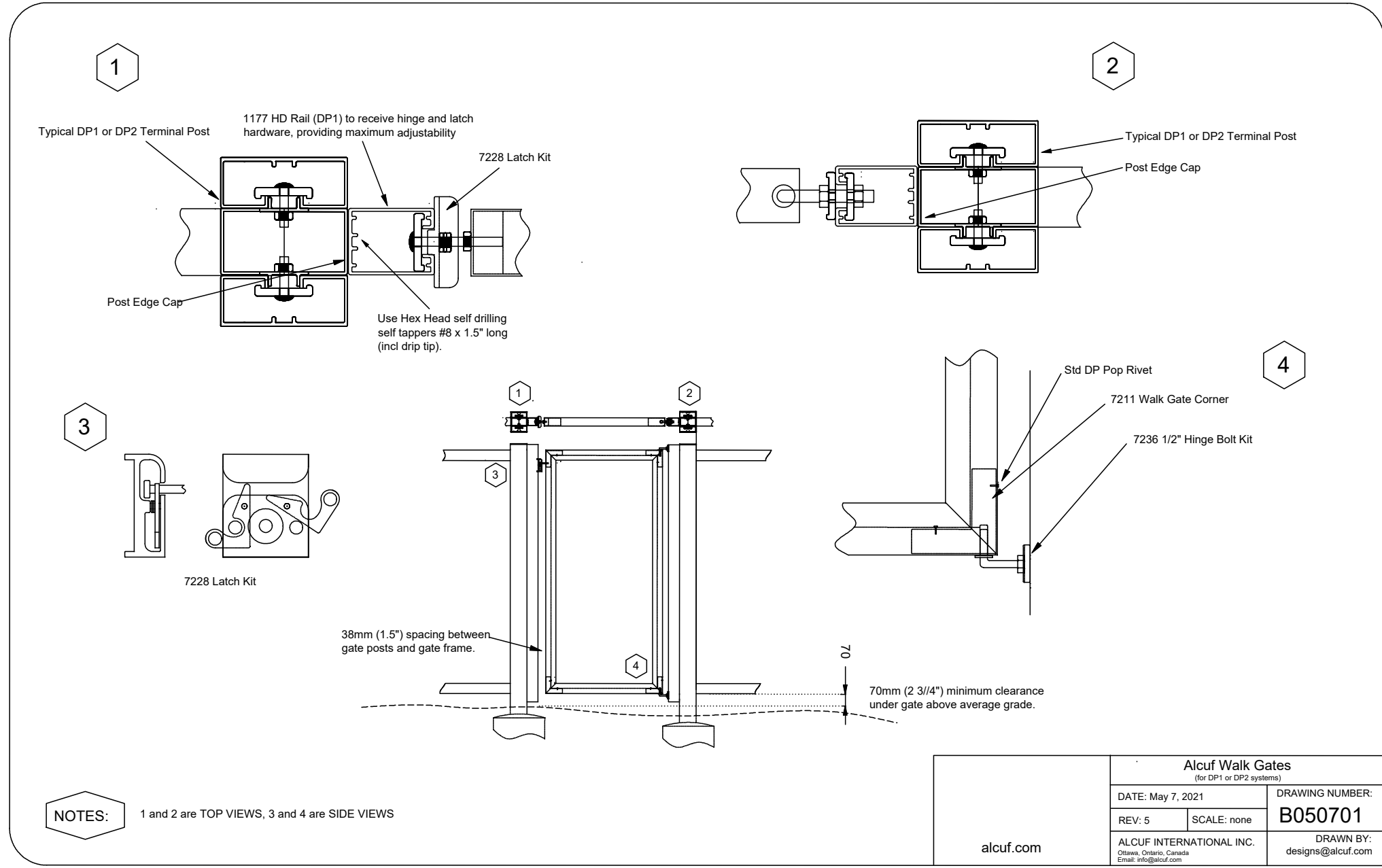
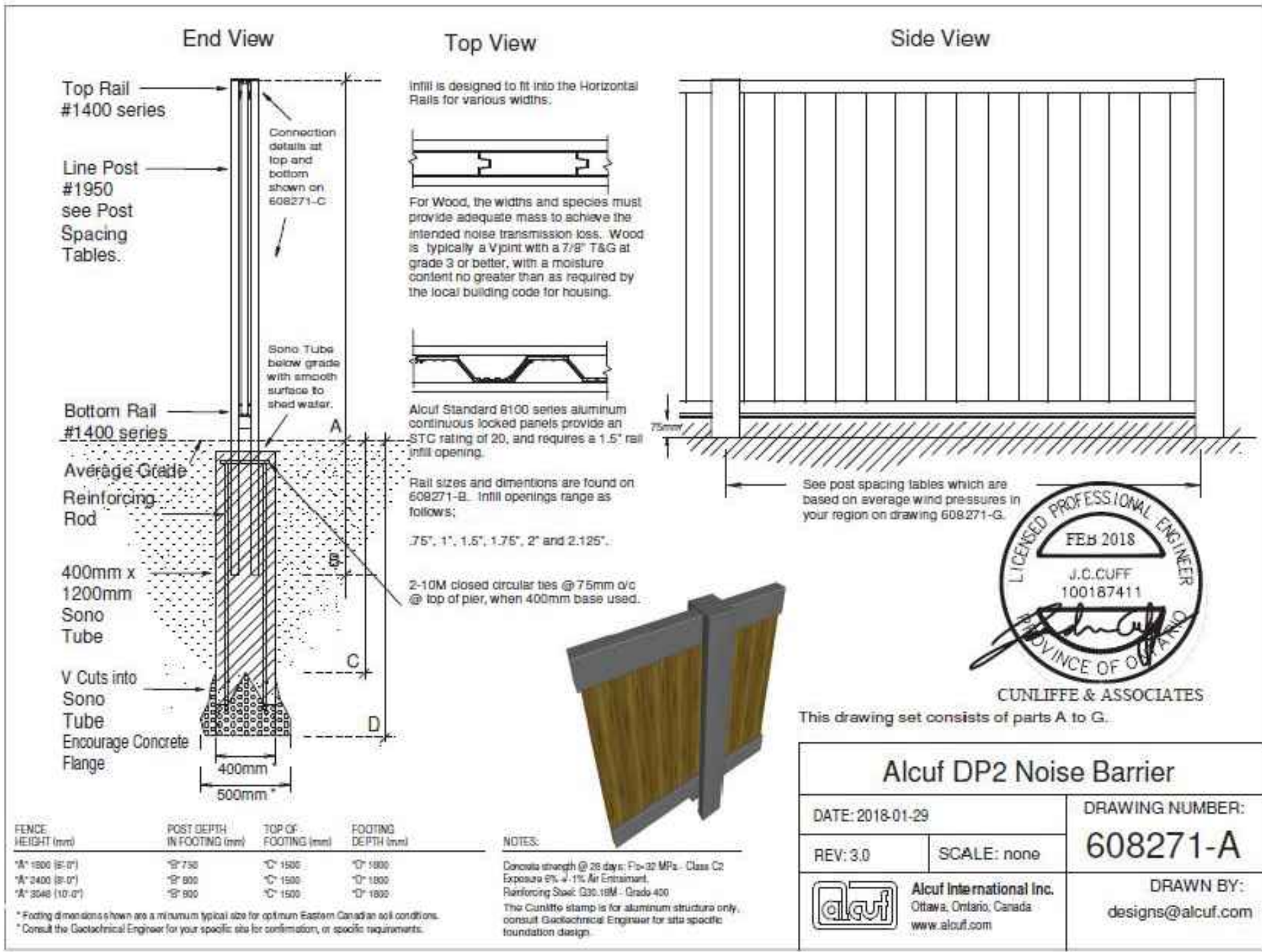


- LEGEND**
- PROPERTY LINE
 - PHASE LINE
- FENCING**
- ACOUSTIC FENCE LOCATED 0.3M ON PRIVATE PROPERTY
- PLANTING**
- AR DECIDUOUS STREET TREE
 - SODDING
- SURFACING**
- DRIVEWAY
- DETAIL KEY**
- 1 DETAIL NO.
 - D1 SHEET NO.

-		
-		
-		
-		
-		
-		
2	Issued for First Submission	June 20/25
1	Issued for Coordination	June 17/25
No.	Description	Date
Revision		
City Approval Stamp		

NAK
design strategies
1285 WELLINGTON STREET, OTTAWA, ON K1Y 3A8 CANADA
T 613.237.2345
Project

HABITAT BEECHCLIFFE 40 BEECHCLIFFE ST., OTTAWA ON		
Title		
LANDSCAPE PLAN		
Date	2025-05-05	Sheet
Scale	1:400	
Drawn	SW	
Checked	JH	
Job No.	25-105	
		L1.0



1 ACOUSTIC FENCE (REFER TO PLAN FOR THE HEIGHT)

N.T.S.

