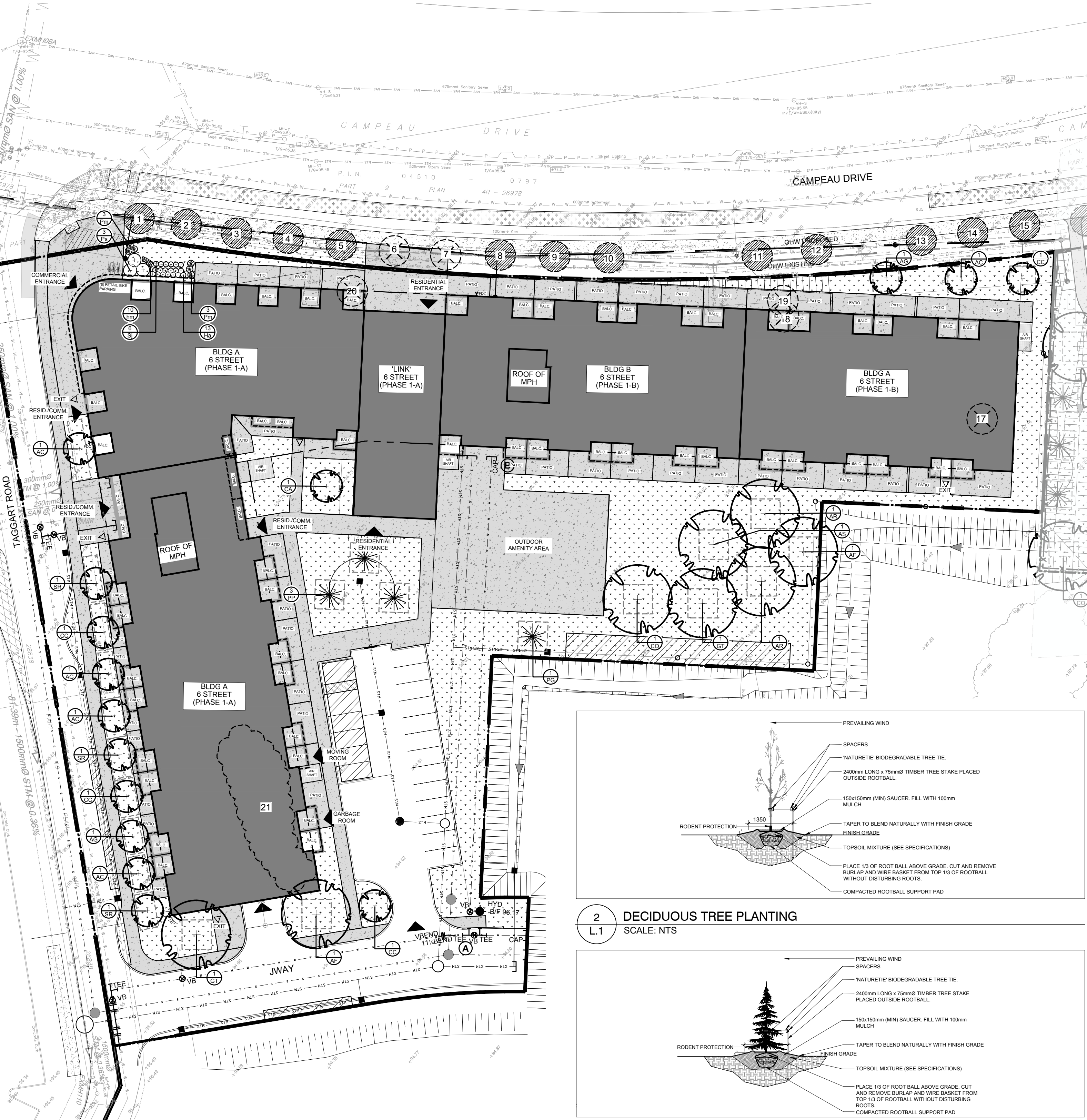




KEY PLAN: NTS

40-YEAR CANOPY COVER CALCULATION

12,287 m² site area
(15) Small Deciduous Trees Proposed (7m²)
(8) Large Deciduous Trees Proposed (154m²)
(4) Large Coniferous Trees Proposed (79m²)
=1,653m² canopy cover =13.4% canopy cover
* Large deciduous trees calculated at 14m dia., Small deciduous trees calculated at 3m dia.



1 TREE CONSERVATION REPORT AND LANDSCAPE PLAN
SCALE 1:400

2 DECIDUOUS TREE PLANTING
SCALE: NTS

3 CONIFEROUS TREE PLANTING
N.T.S.

EXISTING TREE LIST

KEY	QTY	BOTANICAL NAME	COMMON NAME	SIZE	CONDITION	ACTION	OWNERSHIP	COMMENTS
1	1	<i>Acer ginnala</i>	Amur Maple	60mm DBH	DEAD	To remain	City of Ottawa	
2	1	<i>Acer ginnala</i>	Amur Maple	60mm DBH	GOOD	To remain	City of Ottawa	
3	1	<i>Acer ginnala</i>	Amur Maple	60mm DBH	GOOD	To remain	City of Ottawa	
4	1	<i>Acer ginnala</i>	Amur Maple	60mm DBH	GOOD	To remain	City of Ottawa	
5	1	<i>Malus spp.</i>	Crabapple	60mm DBH	DEAD	To remain	City of Ottawa	
6	1	<i>Malus spp.</i>	Crabapple	60mm DBH	DEAD	To be removed	City of Ottawa	
7	1	<i>Malus spp.</i>	Crabapple	60mm DBH	DEAD	To be removed	City of Ottawa	
8	1	<i>Malus spp.</i>	Crabapple	60mm DBH	DEAD	To remain	City of Ottawa	
9	1	<i>Malus spp.</i>	Crabapple	60mm DBH	DEAD	To remain	City of Ottawa	
10	1	<i>Syringa reticulata</i>	Japanese Tree Lilac	60mm DBH	DEAD	To remain	City of Ottawa	
11	1	<i>Syringa reticulata</i>	Japanese Tree Lilac	60mm DBH	GOOD	To remain	City of Ottawa	
12	1	<i>Syringa reticulata</i>	Japanese Tree Lilac	60mm DBH	GOOD	To remain	City of Ottawa	
13	1	<i>Syringa reticulata</i>	Japanese Tree Lilac	60mm DBH	GOOD	To remain	City of Ottawa	
14	1	<i>Syringa reticulata</i>	Japanese Tree Lilac	60mm DBH	GOOD	To remain	City of Ottawa	
15	1	<i>Syringa reticulata</i>	Japanese Tree Lilac	60mm DBH	GOOD	To remain	City of Ottawa	
16	1	<i>Malus spp.</i>	Crabapple	60mm DBH	DEAD	To remain	City of Ottawa	
17	1	<i>Acer negundo</i>	Manitoba Maple	7x100-300mm DBH	GOOD	To be removed	8201 Campeau Drive	
18	1	<i>Acer negundo</i>	Manitoba Maple	250mm DBH	GOOD	To be removed	8201 Campeau Drive	
19	1	<i>Elaeagnus angustifolia</i>	Russian Olive	800mm DBH	GOOD	To be removed	8201 Campeau Drive	
20	1	<i>Populus deltoides</i>	Eastern Cottonwood	300mm DBH	GOOD	To be removed	8201 Campeau Drive	
21	1	<i>Populus deltoides</i>	Eastern Cottonwood	100-150mm DBH	GOOD	To be removed	8201 Campeau Drive	
22	1	<i>Malus spp.</i>	Crabapple	60mm DBH	DEAD	To remain	City of Ottawa	
23	1	<i>Malus spp.</i>	Crabapple	60mm DBH	DEAD	To remain	City of Ottawa	
24	1	<i>Amelanchier canadensis</i>	Serviceberry	60mm DBH	GOOD	To remain	City of Ottawa	

PROPOSED PLANT LIST

KEY	QTY.	BOTANICAL NAME	COMMON NAME	SIZE	CONDITION	REMARKS
TREES						
* AC	4	<i>Amelanchier canadensis</i>	Serviceberry	60mm cal.	B&B	
* AF	2	<i>Acer x freemanii</i>	Freeman's Maple	60mm cal.	B&B	
AG	3	<i>Acer ginnala</i>	Amur Maple	60mm cal.	B&B	
* AR	2	<i>Acer rubrum</i>	Red Maple	60mm cal.	B&B	
* AS	1	<i>Acer saccharinum</i>	Silver Maple	60mm cal.	B&B	
* CA	1	<i>Cornus alternifolia</i>	Pagoda Dogwood	60mm cal.	B&B	Specimen
* CO	1	<i>Celtis occidentalis</i>	Common Hackberry	60mm cal.	B&B	
* CC	4	<i>Cercis canadensis</i>	Eastern Redbud	60mm cal.	B&B	Multi-Stem
* GT	2	<i>Gleditsia triacanthos var. inermis 'Shademaster'</i>	Shademaster Honeylocust	60mm cal.	B&B	
* PP	3	<i>Picea glauca</i>	White Spruce	2000mm ht.	B&B	
PG	1	<i>Picea pungens</i>	Colorado Spruce	2000mm ht.	B&B	
SR	3	<i>Syringa reticulata</i>	Japanese Tree Lilac	60mm cal.	B&B	Single Leader
SHRUBS AND PERENNIALS						
Ha	13	<i>Hydrangea arborescens 'Annabelle'</i>	Annabell Hydrangea	600mm ht.	Potted	800mm o.c.
hm	10	<i>Hemerocallis 'Mini Stella'</i>	Mini Star Daylily	150mm pot	Potted	400mm o.c.
Pm	6	<i>Pinus mugo 'Mugus'</i>	Mugo Pine	600mm spr.	Potted	1200mm o.c.
Ps	3	<i>Philadelphus 'Snowbelle'</i>	Mock Orange	800mm ht.	Potted	2000mm o.c.
Sj	6	<i>Spiraea japonica 'Anthony Waterer'</i>	Anthony Waterer Spirea	600mm ht.	Potted	800mm o.c.

* Denotes Native Species

NOTE: All trees, shrubs, and perennial grasses are proposed on private property.

GENERAL NOTES:

- It is the responsibility of the appropriate contractor or official to report any errors, omissions or discrepancies on this plan with actual site conditions to the Landscape Architect before proceeding with construction.
- The contractor is to notify all utility companies and authorities prior to any excavation and ascertain locations of underground services.
- The contractor is to reinstate all areas and items damaged as a result of construction activity.
- The contractor is to comply with all pertinent codes and by-laws.
- The contractor is to maintain a positive surface run-off throughout the entire construction period.
- The Landscape Architect is not responsible for subsurface conditions.
- The contractor is to identify all existing trees to remain on site with the Landscape Architect prior to construction.
- The contractor is to stake the proposed location of all plant material in conjunction with the Landscape Architect prior to excavation.
- Minimum distances for selected deciduous trees are as follows:
 - Building Foundations 7.5m
 - Sidewalks 1.5m
 - Public Streets 2.5m
 - Underground Infrastructure 2.0m
- All trees within 1m of underground utility trenches are to be excavated by hand.
- Remove all protective wrapping from tree trunks after installation.
- Staking of trees shall only be performed if necessary.
- Ensure that mulch is pulled back a min. distance of 75mm from base of tree trunk.

LEGAL DESCRIPTION:
BLOCK 1
REGISTERED PLAN 4M-1540
CITY OF OTTAWA

CLIENT:



CONSULTANTS

ARCHITECTS:

ARCADIS

55 ST. CLAIR AVENUE WEST, TORONTO
ON M4V 2Y7, CANADA tel 416 596 1930

CIVIL ENGINEERS:

ARCADIS

333 PRESTON STREET SUITE 500, OTTAWA
ON K1S 5N4, CANADA tel 613 727 0555

SURVEYORS:

FARLEY, SMITH AND DENIS
SURVEYING LTD.

UNIT 275, 30 COLONNADE ROAD, OTTAWA
ON K2E 7J6, CANADA tel 613 727 8226

LEGEND

- EXISTING TREE TO REMAIN
- EXISTING TREE TO BE REMOVED
- REQUIRED SOIL VOLUME AT 1.5m DEPTH
PROPOSED DECIDUOUS TREE
- REQUIRED SOIL VOLUME AT 1.5m DEPTH
PROPOSED CONIFEROUS TREE
- EXISTING SHRUBS TO BE REMOVED
- PROPOSED SHRUBS / PERENNIALS
- EXISTING GRASS
- PROPOSED SOD
- EXISTING SIDEWALK
- PROPOSED CONCRETE
- BUILDING OVERHANG
- UNDERGROUND PARKING LIMIT
- PROPERTY LINE

8	REVISED AS PER UPDATED SITE PLAN	10/02/2025	CAT	JL
7	TREE PLANTING REVISED	07/23/2025	CAT	JL
6	REVISED AS PER COMMENTS	07/23/2025	CAT	JL
5	ISSUED FOR SITE PLAN CONTROL	07/22/2025	CAT	JL
4	REVISED AS PER UPDATED SITE PLAN	07/18/2025	CAT	JL
3	GRADING AND SERVICES UPDATED	07/17/2025	WF	JL
2	REVISED AS PER NEW SITE PLAN	06/11/2025	CAT	JL
1	ISSUED FOR REVIEW AND DISCUSSION	05/30/2025	CAT	JL
No.	Issue	Date	DR	CK

JAMES B. LENNOX & ASSOCIATES INC.
LANDSCAPE ARCHITECTS
3332 CARLING AVE. OTTAWA, ONTARIO K2H 5A8
Tel. (613) 722-5168 Fax. (866) 343-3942

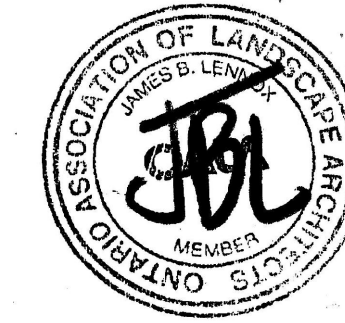
PROJECT

CAMPEAU AND DIDSBURY
8201 Campeau Drive / 303 Didsbury Road Phase 1

DRAWING

TREE CONSERVATION REPORT AND
LANDSCAPE PLAN

STAMP



SCALE

AS SHOWN

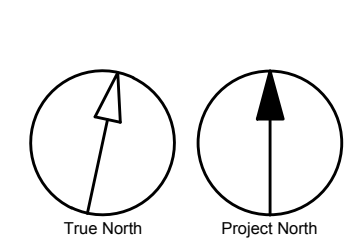
START DATE

APRIL 2025

PROJECT NO.

25MIS2531

PROJECT NORTH



DRAWING NO.

L.1

PLOT SIZE ARCH-D