

ISSUED FOR SUBMISSION
NOVEMBER, 2025

| SHEET | DRAWING |
|-------|-------------------|
| L-1 | Landscape Plan |
| L-2 | Soil Volume Plan |
| L-3 | Canopy Cover Plan |
| L-4 | Details |
| L-5 | Details |

PLAN OF SURVEY OF
BLOCK 39
PART OF BLOCKS 22 AND 23
AND
PART OF BLOCK 41
(CLOSED BY JUDGE'S ORDER LT819458) &
(CLOSED BY BY-LAW 2017-360, INST OC1952156)
REGISTERED PLAN 4M-623
AND
PART OF LOT 35
CONCESSION 2 (RIDEAU FRONT)
GEOGRAPHIC TOWNSHIP OF NEPEAN
CITY OF OTTAWA
SURVEYED BY ANNIS, O'SULLIVAN, VOLLEBEKK LTD.

OWNER
Appelt Properties
3477 Lakeshore Road #218
Kelowna, BC V1W 0A7
T: 250-300-1866

SURVEYOR
Annis, O'Sullivan, Vollebekk Ltd.
14 Concourse Gate, Suite 500
Nepean, ON, K2E 7S6
T: 613-727-0850

LRL Engineering
5430 Canotek Road
Ottawa, ON, K1J 9G2
T: 613-842-3434

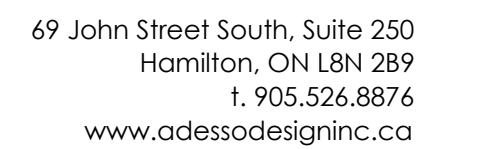
Adesso Design Inc.
69 John Street South, Suite 250
Hamilton, ON, L8N 2B9
T: 905-526-8876

Brouwer Architecture
1880 Regional Road 81
St. Catharines, ON, L2R 6P7
T: 905-984-5745

Fotenn
420 O'Connor Street
Ottawa, ON, K2P 1W4
T: 613-730-5709

Appelt Properties
3477 Lakeshore Rd #318
Kelowna, BC

adesso design inc.
landscape architecture



| QTY | BOTANICAL NAME | COMMON NAME | SIZE | COND. | MATURE HT. (M) | MATURE SPR. (M) | O.C. (M) | REMARKS |
|----------------------|---|-----------------------------------|-----------|-----------|----------------|-----------------|----------|-----------------------------------|
| TREES | | | | | | | | |
| 2 | <i>Acer rubrum</i> 'Armstrong Gold' | Armstrong Gold Red Maple | 50mm Cal. | W.B. | 12.0 | 4.0 | As Shown | |
| 1 | <i>Amelanchier canadensis</i> | Canadian Serviceberry - Multistem | 150cm Ht. | #15 cont. | 6.0 | 4.0 | As Shown | Multistem Form, Native to Ontario |
| 3 | <i>Amelanchier laevis</i> | Allegheny Serviceberry | 50mm Cal. | W.B. | 5.0 | 5.0 | As Shown | Native to Ontario |
| 1 | <i>Amelanchier x grandiflora</i> 'Princess Diana' | Princess Diana Apple Serviceberry | 50mm Cal. | W.B. | 6.0 | 2.0 | As Shown | |
| 3 | <i>Cornus florida</i> 'Rubra' | Red Flowering Dogwood | 50mm Cal. | W.B. | 4.5 | 7.0 | As Shown | |
| 3 | <i>Liriodendron tulipifera</i> 'Little Volunteer' | Little Volunteer Tulip Poplar | 50mm Cal. | W.B. | 7.0 | 5.0 | As Shown | |
| 1 | <i>Pyrus calleryana</i> 'Capital' | Capital Ornamental Pear | 50mm Cal. | W.B. | 10.0 | 4.0 | As Shown | |
| SHRUBS | | | | | | | | |
| 18 | <i>Cornus sericea</i> 'Kelsey' | Kelsey's Dwarf Red Osier Dogwood | 50cm | #3 cont. | 0.50 | 0.50 | 0.40 | |
| 19 | <i>Diervilla lonicera</i> | Bush Honeysuckle | 40cm | #3 cont. | 1.0 | 1.0 | 0.50 | |
| 25 | <i>Hydrangea arborescens</i> 'Annabelle' | Annabelle Hydrangea | 40cm | #1 | 1.1 | 1.0 | 0.50 | Native to Ontario |
| 4 | <i>Ilex verticillata</i> | Winterberry Holly | 80cm | #3 cont. | 1.75 | 1.75 | 1.6 | Native to Ontario |
| 24 | <i>Juniperus chinensis</i> 'Fairview' | Fairview Juniper | 80cm | #7 cont. | 2.75 | 0.80 | 0.70 | |
| 51 | <i>Juniperus sabina</i> | Savin Juniper | 40cm | #3 cont. | 1.0 | 1.25 | 1.0 | |
| 1 | <i>Sambucus canadensis</i> | Elderberry | 50cm | #3 cont. | 2.5 | 2.0 | 1.75 | |
| 52 | <i>Spiraea japonica</i> 'Nana' | Alpine Spiraea | 30cm | #3 cont. | 0.30 | 0.50 | 0.40 | Native to Ontario |
| GRASSES | | | | | | | | |
| 106 | <i>Festuca glauca</i> | Blue Fescue | -- | #1 cont. | 0.30 | 0.30 | 0.20 | |
| PERENNIALS | | | | | | | | |
| 112 | <i>Hemerocallis</i> x 'Purple D'Oro' | Purple D'Oro Daylily | -- | #1 cont. | 0.50 | 0.50 | 0.40 | Rebloomer |
| 29 | <i>Hosta</i> x 'Blue Wedgewood' | Blue Wedgewood Hosta | -- | #1 cont. | 0.50 | 0.60 | 0.50 | |
| 30 | <i>Rudbeckia hirta</i> | Black-Eyed Susan | -- | #1 cont. | 0.60 | 0.50 | 0.40 | Native to Ontario |
| 28 | <i>Tiarella cordifolia</i> | Foamflower | -- | #1 cont. | 0.10 | 0.40 | 0.30 | Native to Ontario |
| GROUND COVERS | | | | | | | | |
| 6 | <i>Cotoneaster dammeri</i> 'Coral Beauty' | Coral Beauty Cotoneaster | 30cm | #3 cont. | 0.40 | 1.5 | 1.3 | |

PROPOSED 6 STOREY APARTMENT BUILDING

LANDSCAPE SPECIFICATIONS:

- (1) Hemerocallis x 'Purple D'Oro'
- (2) Juniperus sabina
- (3) Festuca glauca
- (4) Acer rubrum 'Armstrong Gold'
- (5) Hydrangea arborescens 'Annabelle'
- (6) Spiraea japonica 'Nano'
- (7) Hemerocallis x 'Purple D'Oro'
- (8) Juniperus sabina
- (9) Festuca glauca
- (10) Acer rubrum 'Armstrong Gold'
- (11) Hydrangea arborescens 'Annabelle'
- (12) Spiraea japonica 'Nano'
- (13) Hemerocallis x 'Purple D'Oro'
- (14) Juniperus sabina
- (15) Festuca glauca
- (16) Acer rubrum 'Armstrong Gold'
- (17) Hydrangea arborescens 'Annabelle'
- (18) Spiraea japonica 'Nano'
- (19) Hemerocallis x 'Purple D'Oro'
- (20) Juniperus sabina
- (21) Festuca glauca
- (22) Acer rubrum 'Armstrong Gold'
- (23) Hydrangea arborescens 'Annabelle'
- (24) Spiraea japonica 'Nano'
- (25) Hemerocallis x 'Purple D'Oro'
- (26) Juniperus sabina
- (27) Festuca glauca
- (28) Acer rubrum 'Armstrong Gold'
- (29) Hydrangea arborescens 'Annabelle'
- (30) Spiraea japonica 'Nano'
- (31) Hemerocallis x 'Purple D'Oro'
- (32) Juniperus sabina
- (33) Festuca glauca
- (34) Acer rubrum 'Armstrong Gold'
- (35) Hydrangea arborescens 'Annabelle'
- (36) Spiraea japonica 'Nano'
- (37) Hemerocallis x 'Purple D'Oro'
- (38) Juniperus sabina
- (39) Festuca glauca
- (40) Acer rubrum 'Armstrong Gold'
- (41) Hydrangea arborescens 'Annabelle'
- (42) Spiraea japonica 'Nano'
- (43) Hemerocallis x 'Purple D'Oro'
- (44) Juniperus sabina
- (45) Festuca glauca
- (46) Acer rubrum 'Armstrong Gold'
- (47) Hydrangea arborescens 'Annabelle'
- (48) Spiraea japonica 'Nano'
- (49) Hemerocallis x 'Purple D'Oro'
- (50) Juniperus sabina
- (51) Festuca glauca
- (52) Acer rubrum 'Armstrong Gold'
- (53) Hydrangea arborescens 'Annabelle'
- (54) Spiraea japonica 'Nano'
- (55) Hemerocallis x 'Purple D'Oro'
- (56) Juniperus sabina
- (57) Festuca glauca
- (58) Acer rubrum 'Armstrong Gold'
- (59) Hydrangea arborescens 'Annabelle'
- (60) Spiraea japonica 'Nano'
- (61) Hemerocallis x 'Purple D'Oro'
- (62) Juniperus sabina
- (63) Festuca glauca
- (64) Acer rubrum 'Armstrong Gold'
- (65) Hydrangea arborescens 'Annabelle'
- (66) Spiraea japonica 'Nano'
- (67) Hemerocallis x 'Purple D'Oro'
- (68) Juniperus sabina
- (69) Festuca glauca
- (70) Acer rubrum 'Armstrong Gold'
- (71) Hydrangea arborescens 'Annabelle'
- (72) Spiraea japonica 'Nano'
- (73) Hemerocallis x 'Purple D'Oro'
- (74) Juniperus sabina
- (75) Festuca glauca
- (76) Acer rubrum 'Armstrong Gold'
- (77) Hydrangea arborescens 'Annabelle'
- (78) Spiraea japonica 'Nano'
- (79) Hemerocallis x 'Purple D'Oro'
- (80) Juniperus sabina
- (81) Festuca glauca
- (82) Acer rubrum 'Armstrong Gold'
- (83) Hydrangea arborescens 'Annabelle'
- (84) Spiraea japonica 'Nano'
- (85) Hemerocallis x 'Purple D'Oro'
- (86) Juniperus sabina
- (87) Festuca glauca
- (88) Acer rubrum 'Armstrong Gold'
- (89) Hydrangea arborescens 'Annabelle'
- (90) Spiraea japonica 'Nano'
- (91) Hemerocallis x 'Purple D'Oro'
- (92) Juniperus sabina
- (93) Festuca glauca
- (94) Acer rubrum 'Armstrong Gold'
- (95) Hydrangea arborescens 'Annabelle'
- (96) Spiraea japonica 'Nano'
- (97) Hemerocallis x 'Purple D'Oro'
- (98) Juniperus sabina
- (99) Festuca glauca
- (100) Acer rubrum 'Armstrong Gold'
- (101) Hydrangea arborescens 'Annabelle'
- (102) Spiraea japonica 'Nano'
- (103) Hemerocallis x 'Purple D'Oro'
- (104) Juniperus sabina
- (105) Festuca glauca
- (106) Acer rubrum 'Armstrong Gold'
- (107) Hydrangea arborescens 'Annabelle'
- (108) Spiraea japonica 'Nano'
- (109) Hemerocallis x 'Purple D'Oro'
- (110) Juniperus sabina
- (111) Festuca glauca
- (112) Acer rubrum 'Armstrong Gold'
- (113) Hydrangea arborescens 'Annabelle'
- (114) Spiraea japonica 'Nano'
- (115) Hemerocallis x 'Purple D'Oro'
- (116) Juniperus sabina
- (117) Festuca glauca
- (118) Acer rubrum 'Armstrong Gold'
- (119) Hydrangea arborescens 'Annabelle'
- (120) Spiraea japonica 'Nano'
- (121) Hemerocallis x 'Purple D'Oro'
- (122) Juniperus sabina
- (123) Festuca glauca
- (124) Acer rubrum 'Armstrong Gold'
- (125) Hydrangea arborescens 'Annabelle'
- (126) Spiraea japonica 'Nano'
- (127) Hemerocallis x 'Purple D'Oro'
- (128) Juniperus sabina
- (129) Festuca glauca
- (130) Acer rubrum 'Armstrong Gold'
- (131) Hydrangea arborescens 'Annabelle'
- (132) Spiraea japonica 'Nano'
- (133) Hemerocallis x 'Purple D'Oro'
- (134) Juniperus sabina
- (135) Festuca glauca
- (136) Acer rubrum 'Armstrong Gold'
- (137) Hydrangea arborescens 'Annabelle'
- (138) Spiraea japonica 'Nano'
- (139) Hemerocallis x 'Purple D'Oro'
- (140) Juniperus sabina
- (141) Festuca glauca
- (142) Acer rubrum 'Armstrong Gold'
- (143) Hydrangea arborescens 'Annabelle'
- (144) Spiraea japonica 'Nano'
- (145) Hemerocallis x 'Purple D'Oro'
- (146) Juniperus sabina
- (147) Festuca glauca
- (148) Acer rubrum 'Armstrong Gold'
- (149) Hydrangea arborescens 'Annabelle'
- (150) Spiraea japonica 'Nano'
- (151) Hemerocallis x 'Purple D'Oro'
- (152) Juniperus sabina
- (153) Festuca glauca
- (154) Acer rubrum 'Armstrong Gold'
- (155) Hydrangea arborescens 'Annabelle'
- (156) Spiraea japonica 'Nano'
- (157) Hemerocallis x 'Purple D'Oro'
- (158) Juniperus sabina
- (159) Festuca glauca
- (160) Acer rubrum 'Armstrong Gold'
- (161) Hydrangea arborescens 'Annabelle'
- (162) Spiraea japonica 'Nano'
- (163) Hemerocallis x 'Purple D'Oro'
- (164) Juniperus sabina
- (165) Festuca glauca
- (166) Acer rubrum 'Armstrong Gold'
- (167) Hydrangea arborescens 'Annabelle'
- (168) Spiraea japonica 'Nano'
- (169) Hemerocallis x 'Purple D'Oro'
- (170) Juniperus sabina
- (171) Festuca glauca
- (172) Acer rubrum 'Armstrong Gold'
- (173) Hydrangea arborescens 'Annabelle'
- (174) Spiraea japonica 'Nano'
- (175) Hemerocallis x 'Purple D'Oro'
- (176) Juniperus sabina
- (177) Festuca glauca
- (178) Acer rubrum 'Armstrong Gold'
- (179) Hydrangea arborescens 'Annabelle'
- (180) Spiraea japonica 'Nano'
- (181) Hemerocallis x 'Purple D'Oro'
- (182) Juniperus sabina
- (183) Festuca glauca
- (184) Acer rubrum 'Armstrong Gold'
- (185) Hydrangea arborescens 'Annabelle'
- (186) Spiraea japonica 'Nano'
- (187) Hemerocallis x 'Purple D'Oro'
- (188) Juniperus sabina
- (189) Festuca glauca
- (190) Acer rubrum 'Armstrong Gold'
- (191) Hydrangea arborescens 'Annabelle'
- (192) Spiraea japonica 'Nano'
- (193) Hemerocallis x 'Purple D'Oro'
- (194) Juniperus sabina
- (195) Festuca glauca
- (196) Acer rubrum 'Armstrong Gold'
- (197) Hydrangea arborescens 'Annabelle'
- (198) Spiraea japonica 'Nano'
- (199) Hemerocallis x 'Purple D'Oro'
- (200) Juniperus sabina
- (201) Festuca glauca
- (202) Acer rubrum 'Armstrong Gold'
- (203) Hydrangea arborescens 'Annabelle'
- (204) Spiraea japonica 'Nano'
- (205) Hemerocallis x 'Purple D'Oro'
- (206) Juniperus sabina
- (207) Festuca glauca
- (208) Acer rubrum 'Armstrong Gold'
- (209) Hydrangea arborescens 'Annabelle'
- (210) Spiraea japonica 'Nano'
- (211) Hemerocallis x 'Purple D'Oro'
- (212) Juniperus sabina
- (213) Festuca glauca
- (214) Acer rubrum 'Armstrong Gold'
- (215) Hydrangea arborescens 'Annabelle'
- (216) Spiraea japonica 'Nano'
- (217) Hemerocallis x 'Purple D'Oro'
- (218) Juniperus sabina
- (219) Festuca glauca
- (220) Acer rubrum 'Armstrong Gold'
- (221) Hydrangea arborescens 'Annabelle'
- (222) Spiraea japonica 'Nano'
- (223) Hemerocallis x 'Purple D'Oro'
- (224) Juniperus sabina
- (225) Festuca glauca
- (226) Acer rubrum 'Armstrong Gold'
- (227) Hydrangea arborescens 'Annabelle'
- (228) Spiraea japonica 'Nano'
- (229) Hemerocallis x 'Purple D'Oro'

1. All work to be carried out in accordance with bylaws and codes having jurisdiction over site location.
2. Complete work in accordance with the Landscape Architect.
3. Report any changes, discrepancies or substitutions to the Landscape Architect for review. Obtain approval from the Landscape Architect before proceeding.
4. It is the contractor's responsibility to determine existing service locations.
5. All service locations of plant material will be determined by placement of site services such as hydro valves, meters, utilities roof rain water leaders, downspouts, light standards, etc.
6. All plant material to be installed as stated or marked out and approved by Landscape Architect prior to installation.
7. Supply all plant material in accordance with the Canadian Standards For Nursery Stock (BSI).
8. Install plant material according to details shown.
9. Supply and place mulch in accordance with Canadian Landscape Architect. Planting, disturbed areas around trees and shrubs are to be covered with shredded conifer bark mulch such as Cedar Mulch by all trim from the site (not G-Mulch) by the grow-ark, or approved equivalent). Alternative mulches must be approved by the Landscape Architect.
10. All material to be installed in accordance with where provided.
11. Provide planting beds area as noted on the drawing or to accommodate mature size of plant material.
12. All supply and place work to be completed by the contractor at time of final acceptance. No extras will be paid to complete this work.
13. Supply and place topsoil in accordance with Canadian Landscape Architect (Section 4, Grading & Drainage and Section 4, Growing Medium) to a minimum depth of 150mm unless otherwise specified.
14. Supply and place sod in accordance with Canadian Landscape Standard (Section 7, Lawns & Grass and Section 8, Turfgrass).
15. Supply and place sod in accordance with Canadian Landscape Standard (Section 4, Grading & Drainage and Section 6, Growing Medium) unless otherwise specified.
16. Seed with topsoil. Contractor to provide necessary erosion control protection as required to ensure soil stabilization and proper seed germination.
17. All dimensions in meters unless otherwise noted.
18. If discrepancies arise between plant material count shown on drawing and plant material delivered, the drawing shall be considered correct.
19. Contractor to provide minimum one (1) year warranty (including the cost of labour and material) on material accepted on all work unless otherwise specified.
20. Any site plan or grading and servicing shown is for information only. Refer to approved drawings.
21. All drawings, including those stamped, signed and dated by Landscape Architect.
22. Any work to be reproduced with written consent from the Landscape Architect.
23. Approval of landscape plan to be obtained from municipality.
24. All plant material to be planted a minimum of 1.0m from any swales or ditches.
25. For grading and servicing information refer to the consulting engineer's drawings.
26. For lighting information and power distribution refer to the electrical consultant's drawings.

A map of the study area in Ottawa, Ontario. The map shows a network of roads including Baseline Road, Campbellville D, Woodbine Avenue, Hospital Road, and Campbellville D. A black rectangle labeled 'Site' is located on Baseline Road, south of Campbellville D. To the west of the site is Pinecrest Park. A north arrow is located in the bottom right corner of the map.

| | |
|---|--------------------------------|
|  | property line |
|  | proposed deciduous tree |
|  | proposed shrub |
|  | proposed perennial |
|  | existing elevation |
|  | proposed elevation |
|  | min. 150mm topsoil, fine grain |
|  | C.I.P. concrete |
|  | precast concrete unit pavers |
|  | proposed transformer |

NOT FOR CONSTRUCTION
ISSUED FOR REVIEW & COMMENTS ONLY

| # | DATE | DESCRIPTION |
|---|------------|---------------------------------|
| 1 | 2025-01-10 | Issued for pre UDRP |
| 2 | 2025-02-26 | Issued for UDRP |
| 3 | 2025-07-22 | Issued for first SPA submission |
| 4 | 2025-10-24 | Issued for review |
| 5 | 2025-10-31 | Issued for coordination |
| 6 | 2025-11-04 | Issued for submission |

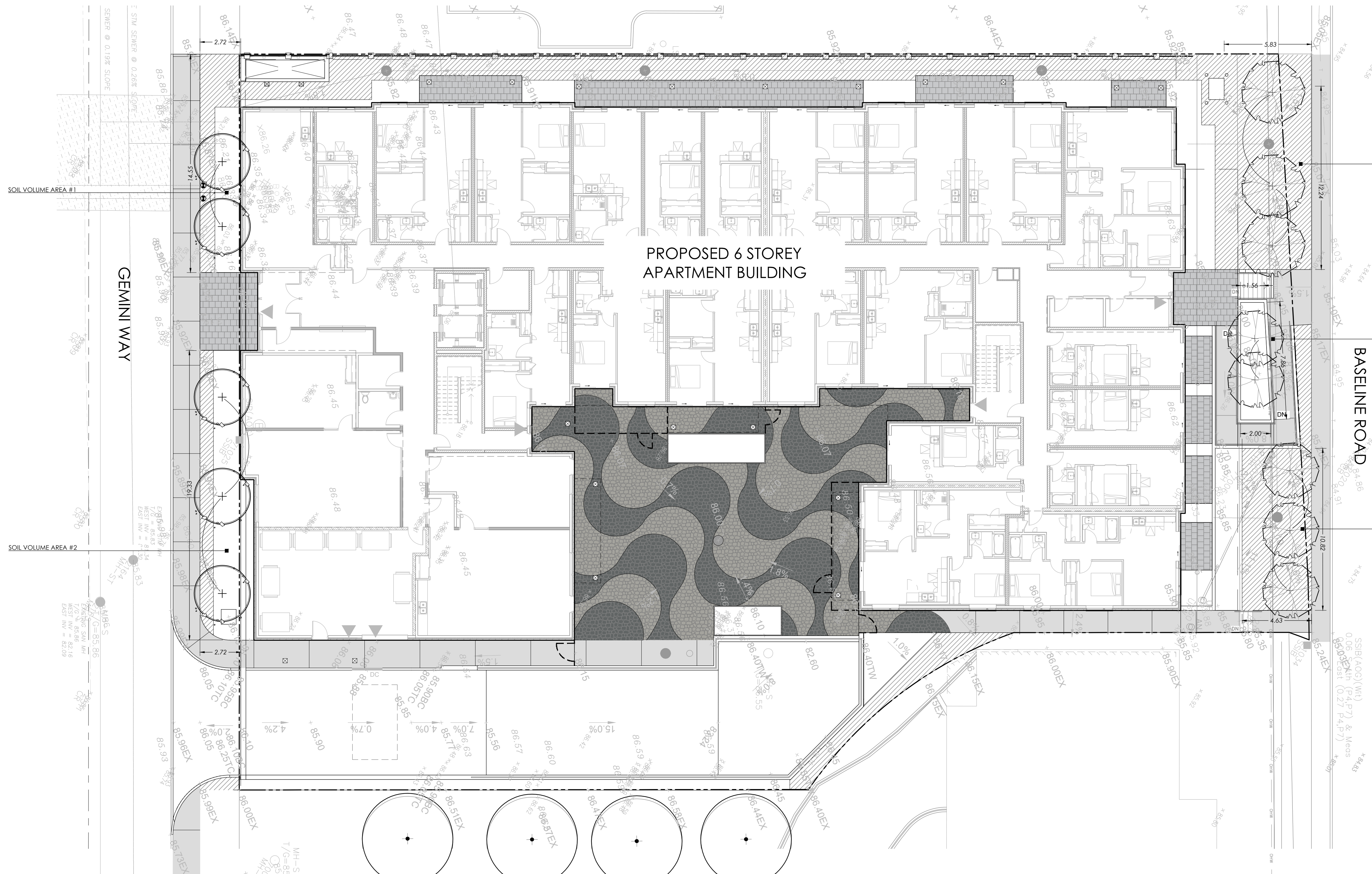


MUNICIPALITY
City of Ottawa

MUNICIPAL FILE NUMBER

L-1

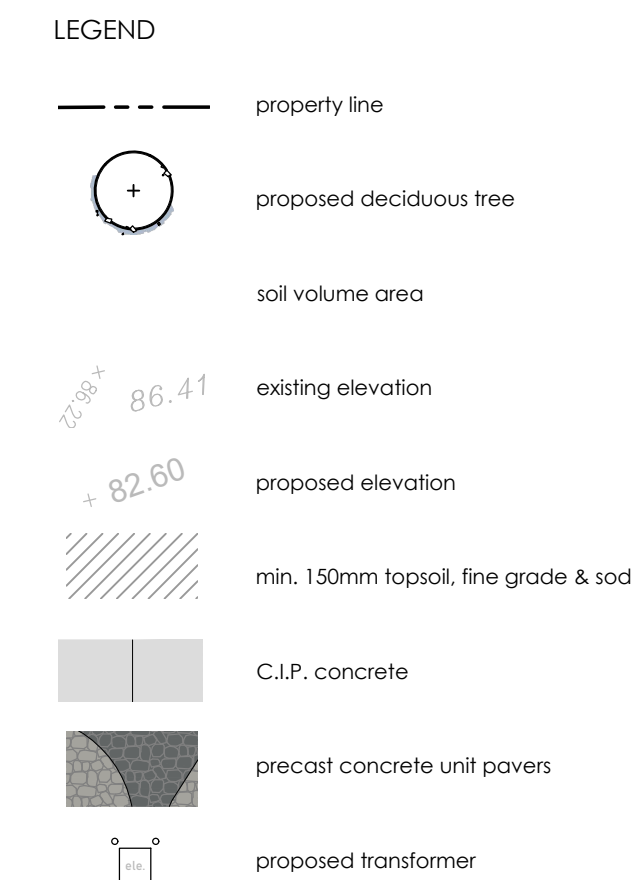
39 John Street South, Suite 250
Hamilton, ON L8N 2B9
t. 905.526.8876
www.adessodesigninc.ca



| Tree Planting Area | Soil Area | Soil Depth | Soil Volume | Tree Quantity | Soil Volume per tree (m³) |
|--------------------|-----------|------------|-------------|---------------|---------------------------|
| | (m2) | (m)* | (m3) | | |
| 1 | 39.57 | 1.60 | 63.31 | 2 | 31.66 |
| 2 | 51.69 | 1.60 | 82.70 | 3 | 27.56 |
| 3 | 50.08 | 1.60 | 80.13 | 3 | 26.71 |
| 4 | 13.96 | 1.60 | 22.34 | 2 | 11.17 |
| 5 | 83.68 | 1.60 | 133.89 | 3 | 44.63 |
| | | | | | |
| | | | | | |
| Total | 238.98 | | 383.37 | 13 | |

| Tree Type/Size | Single Tree Soil Volume (m ³) | Multiple Tree Soil Volume (m ³ /tree) |
|----------------|---|--|
| Ornamental | 15 | 9 |
| Columnar | 15 | 9 |
| Small | 20 | 12 |
| Medium | 25 | 15 |
| Large | 30 | 18 |
| Conifer | 25 | 15 |

- | | | | |
|-----|--|-----|---|
| 1. | All work to be carried out in accordance with by-laws and codes having jurisdiction over site location. | 14. | Supply and place seed in accordance with Canadian Landscape Standard (Section 7, Lawns & Grass and Section 8, Turfgrass) |
| 2. | Compliance with the section of the Landscape Architect | 15. | Supply and place seed in accordance with Canadian Landscape Standard (Section 4, Grading & Drainage and Section 6, Growing Media) |
| 3. | Report any changes, discrepancies or substitutions to the Landscape Architect for review. Obtain approval from the Landscape Architect before proceeding. | 16. | Seeding must be done in accordance with the manufacturer's instructions and seeded with traffic. Contractor to provide necessary erosion control protection as required to ensure soil stabilization and proper seed germination. |
| 4. | It is the contractor's responsibility to determine existing service locations. | 17. | All dimensions in meters unless otherwise noted. |
| 5. | Exact locations of plant material will be determined by placement of site services such as hydro vaults, meters, utilities roof rain water leaders, downspouts, light fixtures. | 18. | If all discrepancies arise between plant material count shown on drawing and actual site, the drawing shall be considered correct. |
| 6. | All plant material located to be staked or marked out and approved by Landscape Architect prior to installation. | 19. | Contractor to provide minimum one (1) year warranty (including tree on municipal property) from date accepted on all work unless otherwise specified. |
| 7. | Supply all plant material in accordance with the Canadian Standards for Nursery Stock. | 20. | Any site plan or grading or seeding shown is for information only. Refer to approved drawings. |
| 8. | Install plant material according to details shown. | 21. | Any site plan or grading or seeding shown is for information only. Refer to approved drawings. |
| 9. | Supply and place mulch in accordance with Canadian Landscape Standard (Section 10, Landscaping). All mulch areas around trees and shrubs are to be covered with shredded conifer bark mulch such as Gro-Bark or equivalent. Alternative mulches such as Gro-Bark or approved equivalent. Shredded mulch must be approved by the Landscape Architect. | 22. | Drawings and specifications produced are not written consent from the Landscape Architect. |
| 10. | Contractor to utilize the services of a landscape architect where provided. | 23. | Approval of landscape plan to be obtained from municipality. |
| 11. | Provide planting bed area as noted on the drawing or to accommodate mature size of plant material. | 24. | All plant material to be planted a minimum of 1.0m from any swales or ditches. |
| 12. | Contractor to submit payment schedule to the contractor at time of final acceptance. No extras will be paid to complete this work. | 25. | For grading and servicing information refer to the consulting Engineer's drawings. |
| 13. | Supply and place topsoil in accordance with Canadian Landscape Standard (Section 4, Grading & Drainage and Section 6, Growing Media) to a minimum depth of 150mm unless otherwise specified. | 26. | For lighting information and power distribution refer to the electrical consultant's drawings. |



| # | DATE | DESCRIPTION |
|---|------------|---------------------------------|
| 1 | 2025-01-10 | Issued for pre UDRP |
| 2 | 2025-02-26 | Issued for UDRP |
| 3 | 2025-07-22 | Issued for first SPA submission |
| 4 | 2025-10-24 | Issued for review |
| 5 | 2025-10-31 | Issued for coordination |
| 6 | 2025-11-04 | Issued for submission |

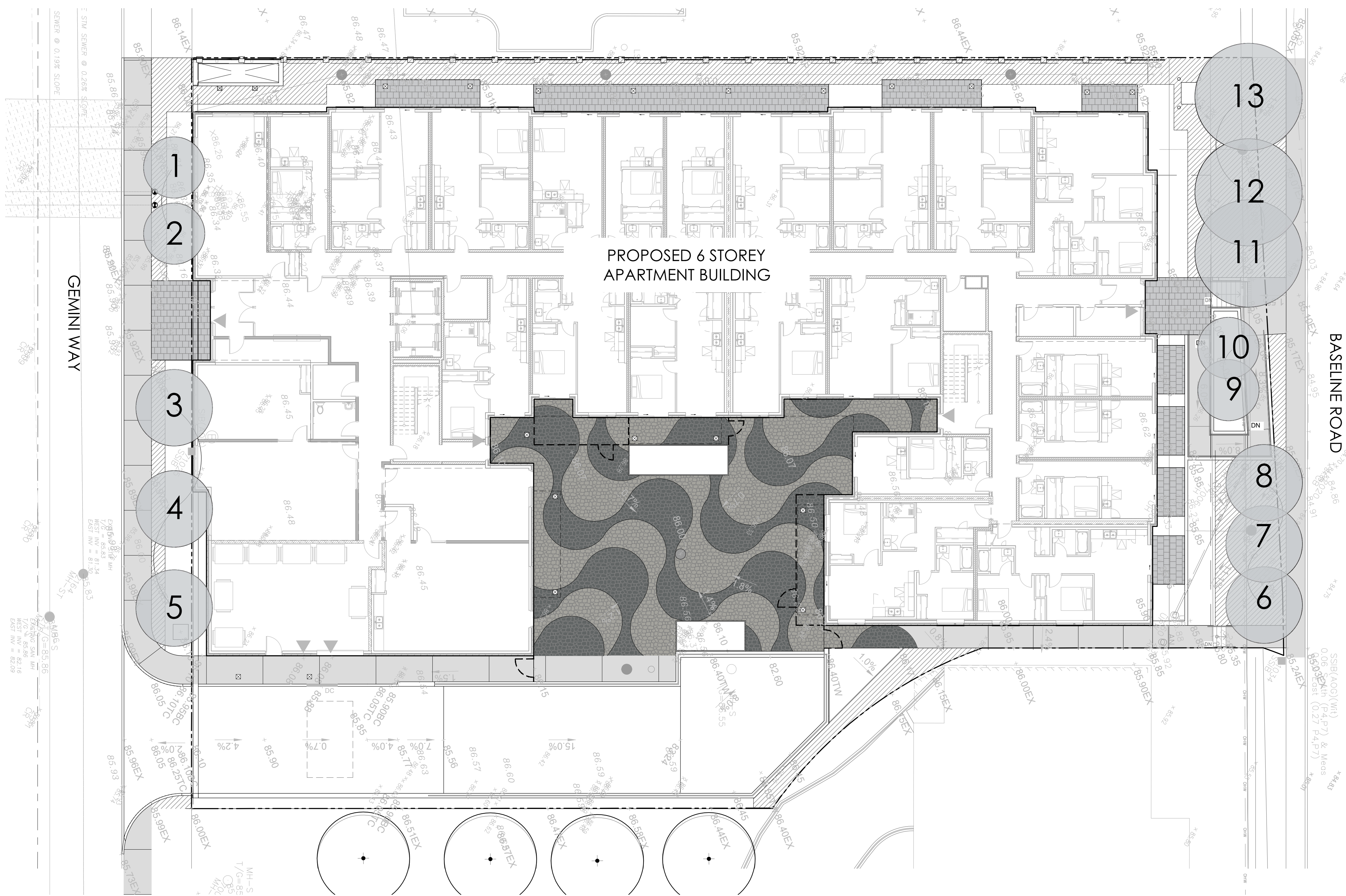
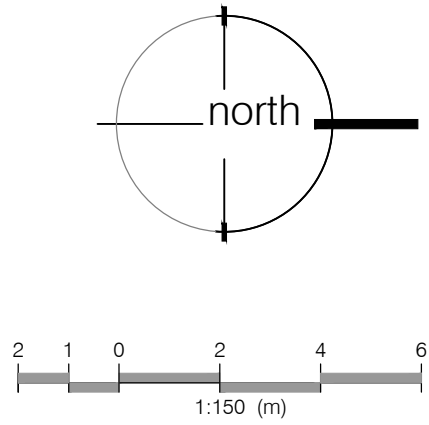
MUNICIPALITY
City of Ottawa

MUNICIPAL FILE NUMBER

L-2



69 John Street South, Suite 250
Hamilton, ON L8N 2B9
t. 905.526.8876
www.adessodesigninc.ca



PROJECTED CANOPY CALCULATION CHART

| Tree # | Tree Species | Mature Crown Width | Soil Volume (meters cubed) per tree | Canopy Area (meters squared) per tree | Canopy Area Subtotal (meters squared) |
|--|--|--------------------|-------------------------------------|---------------------------------------|---------------------------------------|
| 1 | Acer rubrum 'Armstrong Gold' | 4.0 | 31.66 | 12.57 | 12.57 |
| 2 | Acer rubrum 'Armstrong Gold' | 4.0 | 31.66 | 12.57 | 12.57 |
| 3 | Liriodendron tulipifera 'Little Volunteer' | 5.0 | 32.58 | 19.63 | 19.63 |
| 4 | Liriodendron tulipifera 'Little Volunteer' | 5.0 | 32.58 | 19.63 | 19.63 |
| 5 | Liriodendron tulipifera 'Little Volunteer' | 5.0 | 32.58 | 19.63 | 19.63 |
| 6 | Amelanchier laevis | 5.0 | 84.85 | 19.63 | 19.63 |
| 7 | Amelanchier laevis | 5.0 | 84.85 | 19.63 | 17.59 |
| 8 | Amelanchier laevis | 5.0 | 84.85 | 19.63 | 17.59 |
| 9 | Amelanchier canadensis | 4.0 | 10.84 | 12.57 | 18.10 |
| 10 | Amelanchier canadensis | 4.0 | 10.84 | 12.57 | 10.09 |
| 11 | Cornus florida 'Rubra' | 7.0 | 45.52 | 38.48 | 38.48 |
| 12 | Cornus florida 'Rubra' | 7.0 | 45.52 | 38.48 | 26.39 |
| 13 | Cornus florida 'Rubra' | 7.0 | 45.52 | 38.48 | 36.89 |
| Subtotal of tree crown area (Overlapping canopies have not been counted twice) | | 13 | | | 268.79 |
| Total # of trees | | | | Total Canopy (meters squared) | |
| Canopy Summary | | | | | |
| Site Area | | | | | 3224.78 |
| Site Canopy Cover | | | | | 8.34% |

LANDSCAPE NOTES:

- All work to be carried out in accordance with by-laws and codes having jurisdiction over site location.
- Complete all work to the satisfaction of the Landscape Architect.
- Report any changes, discrepancies or substitutions to the Landscape Architect for review. Obtain approval from the Landscape Architect before proceeding.
- It is the contractor's responsibility to determine existing service locations.
- Exact locations of plant material will be determined by placement of site services such as hydro vaults, meters, utilities roof rain water leaders, driveways, light standards, etc.
- All plant material locations to be staked or marked out and approved by Landscape Architect prior to installation.
- Supply all plant material in accordance with the Canadian Standards for Nursery Stock (8th ed.).
- Install plant material according to details shown.
- Supply and place mulch in accordance with Canadian Landscape Standard (Section 10, Mulching). Disturbed soil areas around trees and shrubs are to be covered with shredded conifer bark mulch such as 'Cedar Bark Mulch' by All Treat Farms or 'Classic Cedar Mulch' by Gro-Bark, or approved equivalent. Alternative mulches must be approved by the Landscape Architect.
- Contractor to utilize layout dimensions where provided.
- Provide planting bed area as noted on the drawing or to accommodate mature size of plant material.
- All support systems must be removed by the contractor at time of final acceptance. No extras will be paid to complete this work.
- Supply and place topsoil in accordance with Canadian Landscape Standard (Section 4, Grading & Drainage and Section 6, Growing Medium) to a minimum depth of 150mm unless otherwise specified.
- Supply and place sod in accordance with Canadian Landscape Standard (Section 7, Lawns & Grass and Section 8, Turfgrass Sod) unless otherwise specified.
- Supply and place seed in accordance with Canadian Landscape Standard (Section 4, Grading & Drainage and Section 6, Growing Medium) unless otherwise specified. All 5:1 or greater slopes to be seeded with topsoil. Contractor to provide necessary erosion control protection as required to ensure soil stabilization and proper seed germination.
- All dimensions in meters unless otherwise noted.
- If discrepancies arise between plant material count shown on drawing and plant list, the drawing shall be considered correct.
- Contractor to provide minimum one (1) year warranty (including trees on municipal property) from date accepted on all work unless otherwise specified.
- Any site plan or grading and servicing shown is for information only. Refer to approved drawings.
- Not for construction unless stamped, signed and dated by Landscape Architect.
- Drawings not to be reproduced without written consent from Landscape Architect.
- Approval of landscape plan to be obtained from municipality.
- All plant material to be planted a minimum of 1.0m from any swales or ditches.
- For grading and servicing information refer to the consulting Engineer's drawings.
- For lighting information and power distribution refer to the electrical consultant's drawings.

KEY MAP - N.T.S.



LEGEND

- property line
- 40 year projected canopy
- existing elevation
- proposed elevation
- min. 150mm topsoil, fine grade & sod
- C.I.P. concrete
- precast concrete unit pavers
- proposed transformer

NOT FOR CONSTRUCTION
ISSUED FOR REVIEW & COMMENTS ONLY

REVISIONS/ SUBMISSIONS

| # | DATE | DESCRIPTION |
|---|------------|---------------------------------|
| 1 | 2025-01-10 | Issued for pre UDRP |
| 2 | 2025-02-26 | Issued for UDRP |
| 3 | 2025-07-22 | Issued for first SPA submission |
| 4 | 2025-10-24 | Issued for review |
| 5 | 2025-10-31 | Issued for coordination |
| 6 | 2025-11-04 | Issued for submission |

STAMP



CLIENT

Appelt Properties

MUNICIPALITY

City of Ottawa

PROJECT

85 Gemini Way
Ottawa, ON

MUNICIPAL FILE NUMBER

SHEET

Canopy Cover
Projection Plan

L-3

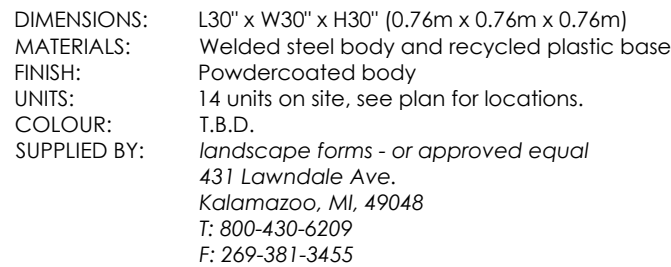
adesso design inc.
landscape architecture



69 John Street South, Suite 250
Hamilton, ON L8N 2B9
t: 905.526.8876
www.adessodesigninc.ca



1. Detail to be reviewed and approved by structural engineer prior to construction. Refer to structural engineering drawings for underground garage wall and roof slab details.
2. Staking of trees will not occur on roof top.



1. Do concrete materials and methods of concrete construction in accordance with OPSS 351.
2. Contractor to verify accuracy of concrete details and reinforcement prior to installation.
3. Provide following materials:
 - cement: to OPSS 905 and 1350;
 - aggregates for concrete: OPSS 905 and 1350;
 - reinforcing steel if detailed: OPSS 905 and 1350;
 - concrete form snap ties with plastic cones and breakaway to be used. Surface patch as required;
 - latex stripping agent: silicones, mineral oil, free of kerosene;
 - latex bonding agent: Sikbond, Sikform, or approved equal;
 - form lumber and plywood: clean, free of loose knots, splits and repairs; make smooth and securely;
 - joint, preformed, non-staining, resilient bituminous type adhesives; to be used only when approved by Engineer;
 - aggregates for base: Granular A, to OPSS form 1010;
 - water: used for concrete mixing shall be clean, free of oil, acid, salt, alkali, sugar, vegetable matter or other substance injurious to the finished product and shall meet the requirement of OPSS.
4. Concrete shall be placed at a strength of 28MPa at 28 days, entrained air of 6 to 15% and slump at point of discharge of 40mm for curbs and footings.
5. Concrete to be compacted to 95% maximum dry density to OPSS and in favour of detailed.
6. Pour concrete in depthable weather conditions.
7. Apply surface finish as detailed.
8. Remove defective area and replace with concrete if still plastic, or remove defective work and replace with new concrete.
9. Concrete areas will not be accepted if:
 - fails to meet requirements of this specification;
 - contains excessive honeycombing or embedded debris;
 - 28 days average strength in any defined area is less than 95% of specified minimum strength;
 - surface irregularities;
 - damaged or chipped;
 - poor workmanship.
10. It is the contractor's responsibility to maintain and protect concrete areas until work of final acceptance.

1. Joint pattern as per layout plan unless otherwise noted;
2. All edges to be hand tooled, using an edging tool with a 6mm radius. No visible tool mark to remain (broom finish over flush joint);
3. Saw cut control joints to 37.5 mm depth (1/4 depth of material) @ max 2000mm each way spacing unless otherwise indicated on plan;
4. Isolation joints at all fixed objects abutted by concrete (e.g. walls, curbs, light poles etc). Sealant colour to complement paving surface.



1. Paver types are as follows (or approved equal):

N.T.S



1. Paver types are as follows (or approved equal)

NOTES:

N.T.S



1. Soil mixture: four (4) parts native soil, one (1) part well rotted compost. If existing soil is not suitable provide triple mix topped or approved equal.
2. Seedlings shall be soaked with water and mulched immediately following planting.
3. Massed shrubs shall be planted in continuous mulched beds unless otherwise noted.
4. Staking schedule:
 - > 30mm caliper size / 2500mm ht. - one stake
 - > 30mm caliper size / 2500mm ht. - two stakes
 - > 70mm caliper - three stakes
5. All support systems must be removed once tree is established.
6. All trees to be straight and planted vertically regardless of slope.
7. Topsoil cover shall be positioned 50mm above grade.
8. The following depths of soil are required for planting:
 - 15cm topsoil for sod;
 - 30cm of topsoil for perennials;
 - 45cm of topsoil for shrubs;
 - 90cm of topsoil for trees

NOT FOR CONSTRUCTION
ISSUED FOR REVIEW & COMMENTS ONLY

- REVISIONS/ SUBMISSIONS

| # | DATE | DESCRIPTION |
|---|------------|---------------------------------|
| 1 | 2025-01-10 | Issued for pre UDRP |
| 2 | 2025-02-26 | Issued for UDRP |
| 3 | 2025-07-22 | Issued for first SPA submission |
| 4 | 2025-10-24 | Issued for review |
| 5 | 2025-10-31 | Issued for coordination |
| 6 | 2025-11-04 | Issued for submission |

STAMP



CLIENT

Appelt Properties

MUNICIPALITY

City of Ottawa

PROJECT

85 Gemini Way

Ottawa, ON

MUNICIPAL FILE NUMBER

SHEET

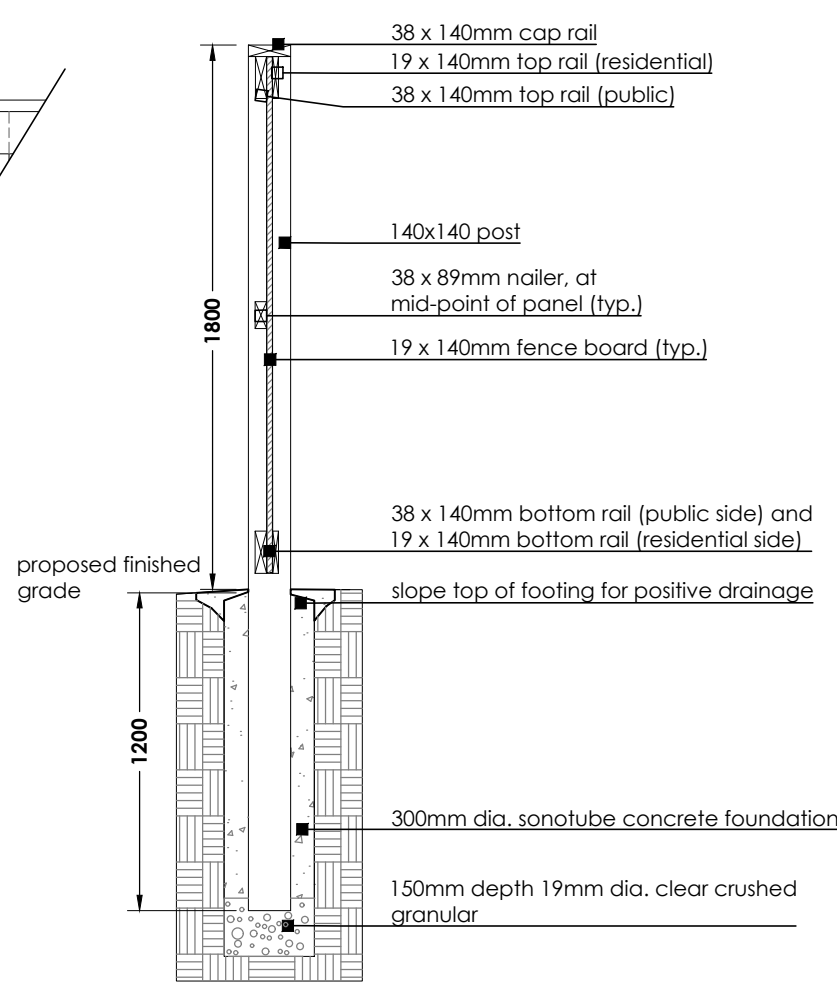
Details

adesso design inc.
landscape architecture



69 John Street South, Suite 250
Hamilton, ON L8N 2B9
t. 905.526.8876
www.adessodesigninc.ca

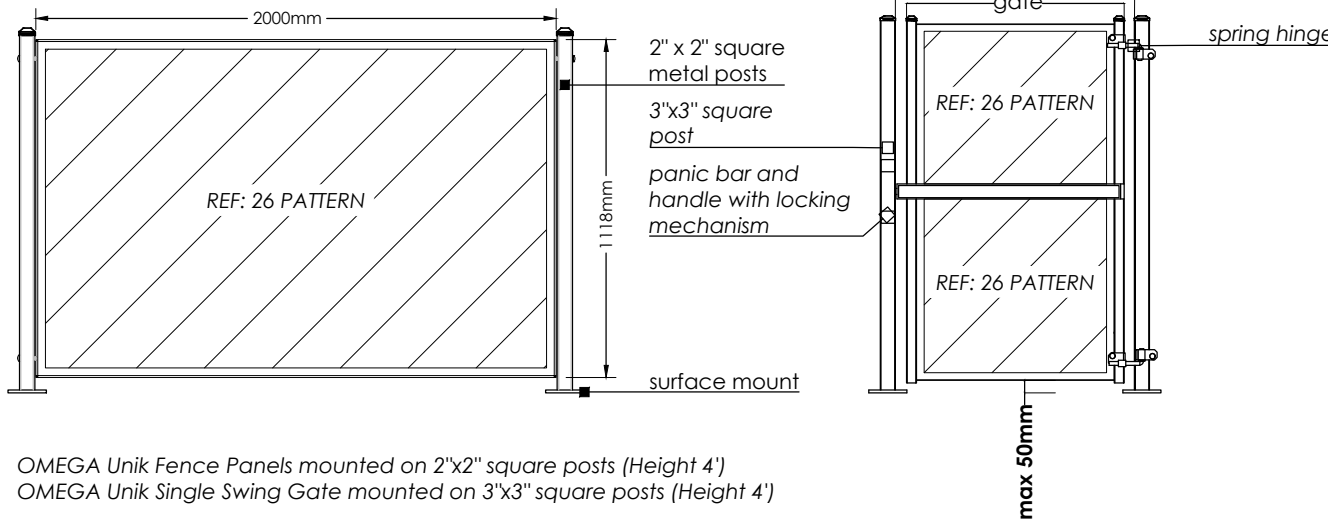
SECTION



1. All materials, components and workmanship to conform to building and local by-laws.
2. Untreated Pressure Treated (Sap, Pine Fir) selected mainly for good appearance all members shall be free of wane and bark pockets. All top grain shall be eliminated by sanding and planing. Members exhibiting moderate to heavy knots shall be removed and replaced through the center of the member.
3. All cuts and holes that expose untreated wood should be liberally brush-coated with two applications of an end-cut preservative (waterborne or solvent based) and a coat of zinc naphthenate (above ground) before the wood is installed. Follow the manufacturer's recommendations re: the application of suitable preservatives.
4. All wood to bear lumber grading stamp.
5. All fasteners shall have exterior grade finishes suitable for use with Pressure Treated Lumber. Stainless steel, galvanized, zinc-dipped or aluminum fasteners are acceptable.
6. All galvanizing to be hot dipped in conformance to CSA standard C416.
7. All cuts of fastener heads below surface of wood. Use sufficient size and quantity of fasteners to ensure a stable, secure structure.
8. Step fence panels minimum 100' - 200mm of posts as required by grade conditions. Spacing of panels may be required for certain grade conditions. Corner posts shall be set at 10' maximum.
9. Lumber sizes are actual sizes rather than nominal sizes.
10. Concrete to have minimum compressive strength of 25 MPa @ 28 days.
11. See landscape plan for fence location.

1. All fences adjacent to road allowances and walkways to be erected 0.15m onto private property. Fencing is not to be erected on the lot line or into any road allowance or easement.
2. Footing and excavation to be entirely on proposed development lands.

ELEVATION - SINGLE SWING GATE



OMEGA Unik Fence Panels mounted on 2"x2" square posts (Height 4')
OMEGA Unik Single Swing Gate mounted on 3"x3" square posts (Height 4')

PRODUCT INFO: laser cut aluminum panels with polyester powder coat

SPECIFY: colour: Black or approved equal
INSTALLATION: surface mounting, see L-1 for location

SUPPLIED BY: Park Street Solutions
p. 1.888.788.7408
e. info@parkst.ca
contact: Kevin Bettridge

OMEGA UNIK FENCE PANELS AND GATE (4' HT.)

N.T.S.

2

L-5

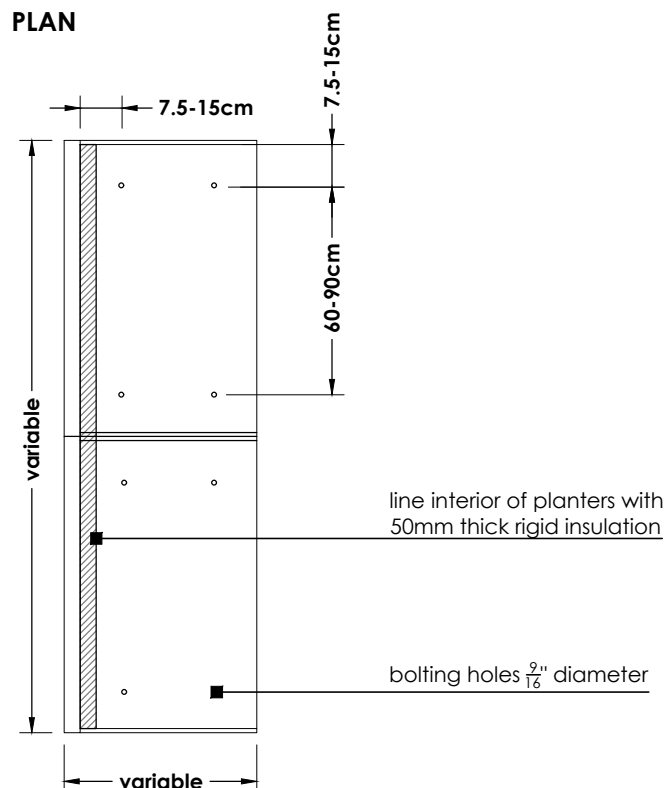
WOOD PRIVACY FENCE (1.8M HEIGHT - PRESSURE TREATED)

N.T.S.

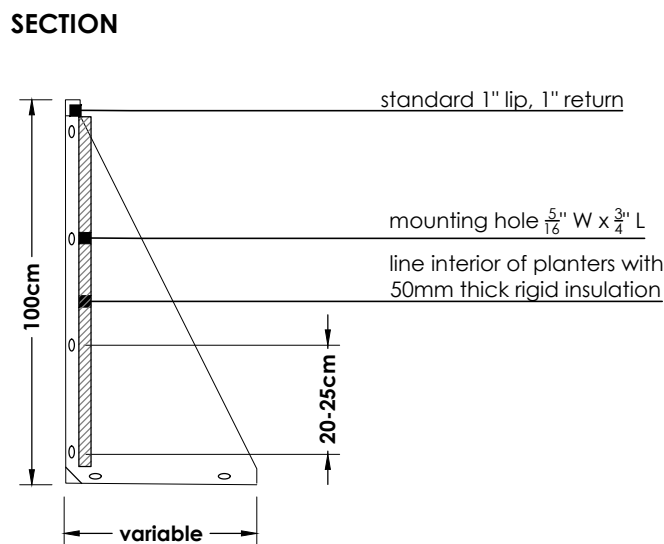
1

L-5

JOIN EDGING - VARIABLE CENTRAL
PLAN E



| | |
|---|--|
| <p>The Join System is constructed of marine grade aluminum or weathering steel. Modular planter, edging and sealing profiles bolt together to create an array of small or large configurations for engaging outdoor spaces. Join is ultra versatile and can be employed to create a completely custom planter system designed specifically for a project.</p> | |
| DIMENSIONS: | Varies (refer to L-1) |
| MATERIALS: | Marine-grade aluminum |
| FINISH: | Standard Powdercoat |
| LOCATION/ | Five (6) see landscape plan for locations |
| QUANTITY: | - each planter comprised of multiple Join Edging Cap and Join Edging Variable Central components to achieve dimensions shown on landscape plan |
| COLOR: | TBD |
| SUPPLIED BY: | Green Theory Design E: sales@greentheorydesign.com P: 1-844-747-9283 |



JOIN MODULAR PLANTERS BY GREEN THEORY (OR APPROVED EQUAL)

N.T.S.

3

L-5

NOT FOR CONSTRUCTION
ISSUED FOR REVIEW & COMMENTS ONLY

REVISIONS/ SUBMISSIONS

| # | DATE | DESCRIPTION |
|---|------------|---------------------------------|
| 1 | 2025-01-10 | Issued for pre UDRP |
| 2 | 2025-02-26 | Issued for UDRP |
| 3 | 2025-07-22 | Issued for first SPA submission |
| 4 | 2025-10-24 | Issued for review |
| 5 | 2025-10-31 | Issued for coordination |
| 6 | 2025-11-04 | Issued for submission |

STAMP



CLIENT
Appelt Properties
MUNICIPALITY
City of Ottawa

PROJECT
85 Gemini Way
Ottawa, ON

MUNICIPAL FILE NUMBER

SHEET

Details

L-5

adesso design inc.
landscape architecture



39 John Street South, Suite 250
Hamilton, ON L8N 2B9
t. 905.526.8876
www.adessodesigninc.ca