

1 LANDSCAPE PLAN
L - 01 Scale: 1:750

NOTE:
SITE SERVICING ELEMENTS SHOWN ON THIS SHEET ARE FOR REFERENCE ONLY.
SEE CIVIL DRAWINGS FOR SITE SERVICING / GRADING.

THIS PLAN IS ISSUED FOR SITE PLAN CONTROL SUBMISSION ONLY.
ADDITIONAL DETAILING AND SPECIFICATIONS ARE REQUIRED PRIOR TO TENDERING
AND CONS.

PLAN TO BE READ IN CONJUNCTION WITH 'TREE CONSERVATION REPORT FOR
5431 FERNBANK ROAD, OTTAWA ON' NOVEMBER 27, 2025
BY Andrew K. Boyd, Certified Arborist #ON-0496A, IFS Associates.

LEGEND

- PROPERTY LINE
- PROPOSED CHAINLINK FENCE
- PROPOSED C.I.P. CONCRETE
- PROPOSED ASPHALT
- PROPOSED SOD
- PROPOSED STONEDUST PATH
- PREPOSED GRASSES / SHRUBS
- PROPOSED REFORESTATION AREA
- PROPOSED SEED
- EXISTING TREES TO BE PRESERVED
- PROPOSED PLANTING

TOPOGRAPHIC SURVEY INFO
SURVEY PROPERTY BOUNDARIES TAKEN FROM TOPOGRAPHIC PLAN OF SURVEY OF BLOCK 365,
REGISTERED PLAN 4M-1637, CITY OF OTTAWA
PREPARED BY ANNIS, O'SULLIVAN, VOLLEBEKK LTD.
JULY 13, 2023 (JOB N O. 23493-23)

Plant List							
Origin	ID	Qty	Botanical Name	Common Name	Scheduled Si	Remarks	
LARGE DECIDUOUS TREES							
Ntv	Ar	8	Acer rubrum	Red Maple	70mm caliper	WB, Staked	
Ntv	As	9	Acer saccharum	Sugar Maple	70mm caliper	WB, Staked	
Ntv	Co	14	Celtis occidentalis	Common Hackberry	60mm caliper	WB, Staked	
Ntv H	GtS	6	Gleditsia triacanthos inermis 'Shademaster'	Shademaster Thornless Honeylocust	90mm caliper	WB, Staked	
Ntv	Qa	3	Quercus alba	White Oak	70mm caliper	WB, Staked	
Ntv	Qm	3	Quercus macrocarpa	Burr Oak	70mm caliper	WB, Staked	
Ntv	Qr	3	Quercus rubra	Northern Red Oak	70mm caliper	WB, Staked	
Ntv	Ta	3	Tilia americana	Basswood	70mm cal.	WB, Staked	
LARGE COLUMNAR DECIDUOUS TREES							
Ntv	TaB	8	Tilia americana 'Boulevard'	Boulevard Linden	70mm caliper	WB, Staked	
MEDIUM DECIDUOUS TREES							
Ntv	Ag	16	Aesculus glabra	Ohio Buckeye	50mm caliper	WB, Staked	
Ntv	Cc	5	Carpinus caroliniana	Bluebeech, Muscledwood	50mm caliper	WB, Staked	
Ntv	Gd	5	Gymnocladus dioica	Kentucky Coffee Tree	50mm caliper	WB, Staked	
Ntv H	GtD	6	Gleditsia triacanthos inermis 'Draves'	Streetkeeper Honeylocust	70mm caliper	WB, Staked	
Non N	MD	7	Malus 'Dolgo'	Malus Dolgo	60mm caliper	WB, Staked	
Ntv	Ov	11	Ostrya virginiana	Ironwood	50mm caliper	WB, Staked	
Non N	UW	4	Ulmus minor x parvifolia 'Frontier'	Frontier Elm	70mm caliper	WB, Staked	
SMALL DECIDUOUS TREES							
Ntv H	CcgC	12	Crataegus crus-galli inermis 'Cruzam'	Thornless Crusader Cockspur Hawthorn	45mm caliper	WB, Staked	
Non N	MSD	1	Malus x 'Snowdrift'	Snowdrift Crabapple	40mm caliper	WB, Staked	
Ntv	Sd	9	Sorbus Americana	Mountain Ash	45mm caliper	WB, Staked	
ORNAMENTAL TREES							
Ntv H	AcB	2	Amelanchier canadensis 'Ballerina'	Ballerina Serviceberry (tree form)	40mm caliper	WB, Staked	
CONIFEROUS TREES							
Ntv	Ab	8	Abies balsamea	Balsam Fir	200 cm ht	WB, Staked	
Non N	JcBP	4	Juniperus chinensis 'Blue Point'	Blue Point Juniper	150 cm ht	Potted	
Ntv	Pg	11	Picea glauca	White Spruce	200 cm ht	WB, Staked	
Ntv	Pr	20	Pinus resinosa	Red Pine	200cm ht	WB, Staked	
Ntv	Ps	13	Pinus strobus	Eastern White Pine	200 cm ht.	WB, Staked	
Ntv	ToDS	3	Thuja occidentalis 'Degroot's Spire'	Degroot's Spire Arborvitae	150 cm ht.	Potted	
Ntv	ToH	25	Thuja occidentalis 'Holmstrup'	Holmstrup Cedar	125cm ht	Potted	
SHRUBS							
Ntv	DI	264	Diervilla lonicera	Dwarf Bush-honeysuckle		2 gallon pot	
Ntv	Hp	42	Hypericum prolificum	Shrubby St. John's Wort		2 gallon pot	
Non N	HpFI	63	Hydrangea paniculata 'Fire & Ice'	Fire & Ice paniclode hydrangea	2 gallon pot	0.9m o.c.	
Ntv	Rp	69	Rosa palustris	Swamp Rose	3 year	Potted	
Ntv H	HalW	43	Hydrangea arborescens 'Invincible Wee White'	Wee White Annabelle Hydrangea	3 year	Potted	
REFORESTATION PLANTING							
Ntv	As for	5	Acer saccharum	Sugar Maple	150 cm ht.	Bare root	
Ntv	Asa for	5	Acer rubrum	Red Maple	150 cm ht.	Bare root	
Ntv	Bp for	5	Betulus papyrifera	White Birch	150 cm ht.	Bare root	
Ntv	Ov for	5	Ostrya virginiana	American Hophornbeam	150 cm ht.	Bare root	
Ntv	Pg for	5	Picea glauca	White Spruce	75 cm ht.	Potted	
Ntv H	Ps for	5	Pinus strobus	White Pine	50 cm ht.	Potted	
Ntv	Qm for	5	Quercus macrocarpa	Bur Oak	150 cm ht.	Bare root	
Ntv	Tc for	5	Tsuga canadensis	Canadian Hemlock	75 cm ht.	Potted	
PERENNIALS							
Non N	CaKF	189	Calamagrostis x acutiflora 'Karl Foerster'	Feather Reed Grass	3 year	Potted	
Ntv	Hs	109	Helictrochon sempervrens	Ornamental Oats	3 year	Potted	
Ntv	Pv	141	Panicum virgatum	Switch Grass		1 gallon pot	
Mix	PvF	38	Perennial Mix A - Shade	Ornamental Grasses - Shade		2 gallon pot	
Ntv H	PvHM	140	Panicum virgatum 'Heavy Metal'	Heavy Metal Switch Grass	3 year	Potted	

EXISTING TREES UNDER CITY OWNERSHIP = 35, UNDER ADJACENT PRIVATE OWNERSHIP = 40
PROPOSED TREES IN CITY R.O.W. = 3

TREE PROTECTION REQUIREMENTS:

- PRIOR TO ANY WORK ACTIVITY WITHIN THE CRITICAL ROOT ZONE (CRZ = 10 X DIAMETER) OF A TREE, TREE PROTECTION FENCING MUST BE INSTALLED SURROUNDING THE CRITICAL ROOT ZONE, AND REMAIN IN PLACE UNTIL THE WORK IS COMPLETE.
- UNLESS PLANS ARE APPROVED BY CITY FORESTRY STAFF, FOR WORK WITHIN THE CRZ:
 - DO NOT PLACE ANY MATERIAL OR EQUIPMENT - INCLUDING OUTHOUSES;
 - DO NOT ATTACH ANY SIGNS, NOTICES OR POSTERS TO ANY TREE;
 - DO NOT BASE OR LOWER THE EXISTING GRADE;
 - TUNNEL OR BORE WHEN DIGGING;
 - DO NOT DAMAGE THE ROOT SYSTEM, TRUNK, OR BRANCHES OR ANY TREE;
 - ENSURE THAT EXHAUST FUMES FROM ALL EQUIPMENT ARE NOT DIRECTED TOWARD ANY TREE CANOPY;
 - DO NOT EXTEND HARD SURFACE OR SIGNIFICANTLY CHANGE LANDSCAPING.
- TREE PROTECTION FENCING MUST BE AT LEAST 1.2M IN HEIGHT, AND CONSTRUCTED OF RIGID OR FRAMED MATERIALS (E.G. MODULOC, STEEL, RIVWOOD HOARDING, OR SNOW FENCE ON A 2"x4" WOOD FRAME) WITH POSTS 2.4M APART, SUCH THAT THE FENCE LOCATION CANNOT BE ALTERED. ALL SUPPORTS AND BRACING MUST BE PLACED OUTSIDE OF THE CRZ, AND INSTALLATION MUST MINIMIZE DAMAGE TO EXISTING ROOTS. (SEE DETAILS).
- THE LOCATION OF THE TREE PROTECTION FENCING MUST BE DETERMINED BY AN ARBORIST AND DETAILED ON ANY ASSOCIATED PLANS FOR THE SITE (E.G. TREE CONSERVATION REPORT, TREE DISCLOSURE REPORT, ETC.). THE PLAN AND CONSTRUCTION FENCING MUST BE APPROVED BY CITY FORESTRY STAFF PRIOR TO THE COMMENCEMENT OF WORK.
- IF THE FENCED TREE PROTECTION AREA MUST BE REDUCED TO FACILITATE CONSTRUCTION, MITIGATION MEASURES MUST BE PRESCRIBED BY AN ARBORIST AND APPROVED BY CITY FORESTRY STAFF. THESE MAY INCLUDE THE PLACEMENT OF PLYWOOD, WOOD CHIPS, OR STEEL PLATING OVER THE ROOTS FOR PROTECTION OR THE PROPER PRUNING AND CARE OF ROOTS WHERE ENCOUNTERED.

BY-LAW 5:
ALL CITY-OWNED TREES ARE PROTECTED UNDER THE MUNICIPAL TREES AND NATURAL AREAS PROTECTION BY-LAW (2009-270). WITHIN THE URBAN AREA, PRIVATELY-OWNED TREES GREATER THAN 15CM DIAMETER ON LOTS 1/4A IN SIZE OR LESS, AND TREES GREATER THAN 15CM DIAMETER ON LOTS 1/4A, ARE PROTECTED UNDER THE URBAN TREE CONSERVATION BY-LAW (2009-200).

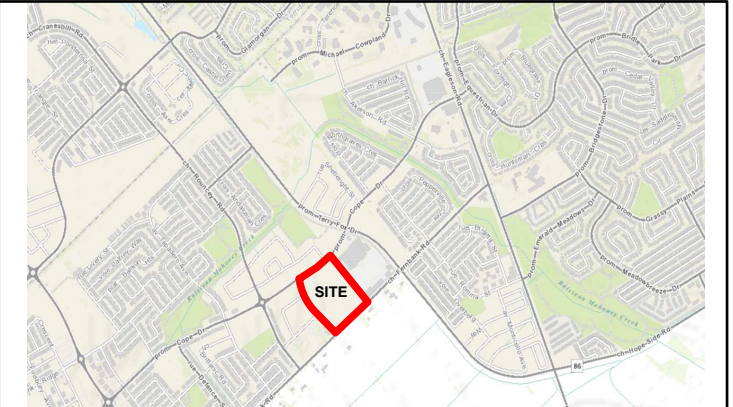
TREE PROTECTION SPECIFICATION

TO BE IMPLEMENTED FOR RETAINED TREES, BOTH ON SITE AND ON ADJACENT SITES, PRIOR TO ANY TREE REMOVAL OR SITE WORKS AND MAINTAINED FOR THE DURATION OF WORK ACTIVITIES ON SITE.

SCALE: NTS

DATE: MAY 2019

DRAWING NO.: 1 of 1



ARCHITECT:
N45 ARCHITECTURE INC.
71 BANK STREET, 7TH FLOOR
OTTAWA, ONTARIO, K1P 5N2
613.224.0095
VLADIMIR@N45.CA

LANDSCAPE ARCHITECT:
RUHLAND & ASSOCIATES LTD.
200-1750 COURTWOOD CRESCENT
OTTAWA, ONTARIO, K2C 2B5
613.224.4744
MRUHLAND@RALA.CA

CIVIL ENGINEER:
JP2G CONSULTANTS INC.
1150 MORRISON DRIVE, SUITE 410
OTTAWA, ONTARIO, K2H 8S9
613.828.7800
ZACH.BAUMAN@JP2G.COM

MECHANICAL & ELECTRICAL ENGINEER:
GOODKEY, WEEDMARK & ASSOCIATES LTD.
1688 WOODWARD DRIVE
OTTAWA, ONTARIO, K2C 3R8
613.727.5111 x299
RAJ@GWAL.COM

LAND SURVEYOR:
ANNIS, O'SULLIVAN, VOLLEBEKK LTD
14 CONCORSE GATE, SUITE 500
OTTAWA, ONTARIO, K2E 7S6
613.727.0850
NEPEAR@AOVLT.COM

GEOTECHNICAL ENGINEER & ENVIRONMENTAL:
EXP SERVICES INC.
100-2650 QUEENSVIEW DRIVE
OTTAWA, ONTARIO K2B 8H6
613.688.1899 x63242
ISMAIL.TAKI@EXP.COM

TRAFFIC ENGINEER:
ROBINSON CONSULTANTS
210-350 PALLADIUM DRIVE
OTTAWA, ONTARIO, K2V 1A8
613.592.6060
AHOWELL@RCII.COM

no.	revision	date
04		
03	Reissued for SPC Drawings	2025/11/27
02	Issued for 66% Drawings	2025/10/28
01	Issued for SPC submission	2025/10/28

N45 ARCHITECTURE INC.
71 Bank Street, 7th Floor - Ottawa, Ontario, K1P 5N2
tel. 613.224.0095 fax 613.224.9811

Ruhland & Associates Ltd
landscape architecture • urban design • site planning
Ph 613-224-0744 Fx 613-224-1131 info@rala.ca www.rala.ca

FERNBANK CATHOLIC HIGHSCHOOL

5431 FERNBANK ROAD
OTTAWA, ONTARIO
K2S 0T7

north

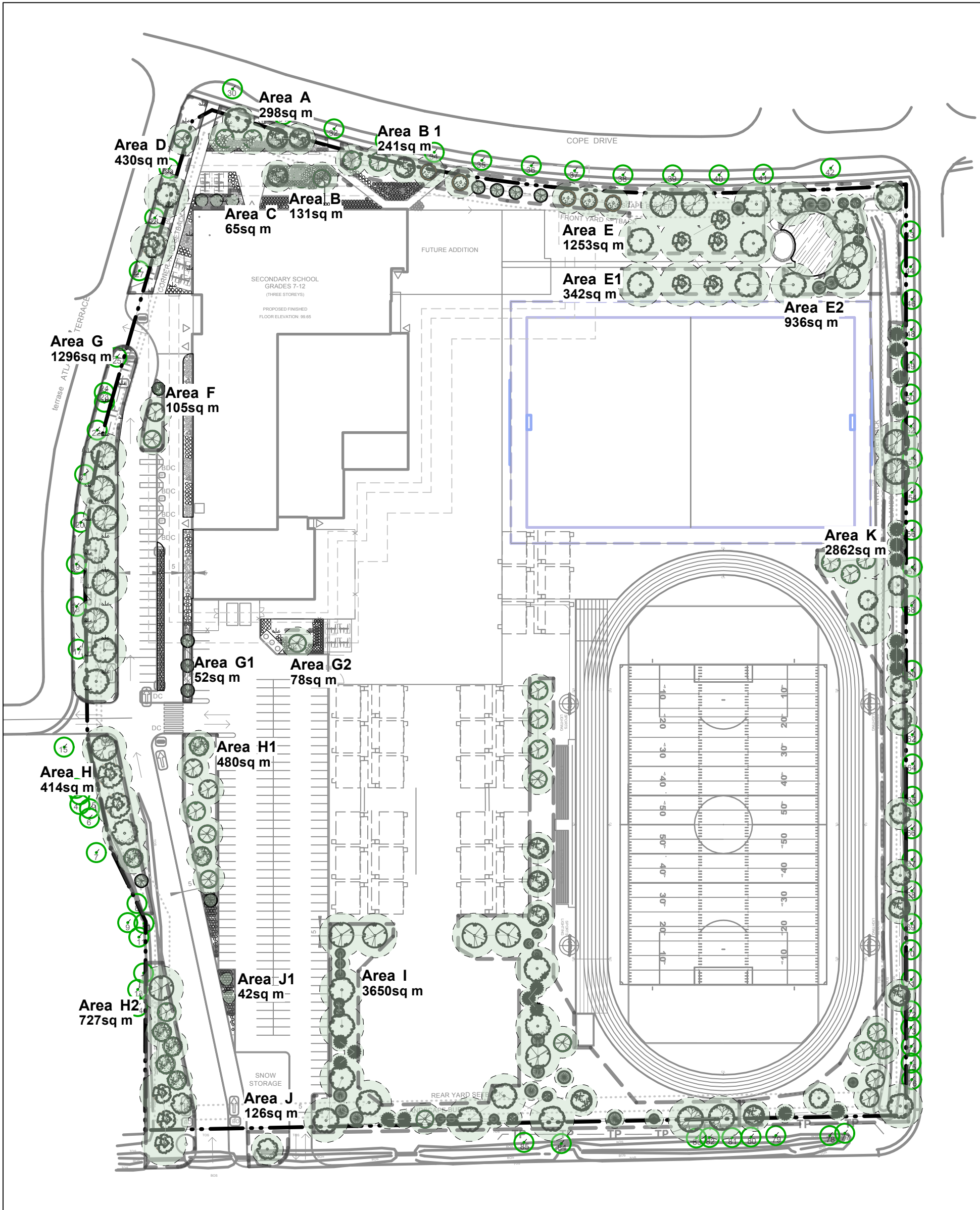
drawing title

LANDSCAPE / PLANTING PLAN

scale	drawn by	D.A.
date	checked by	M.R.
project number	drawing number	L - 01
RA 24-1743		

CONTRACTOR TO VERIFY ALL DIMENSIONS AND NOTIFY THE ARCHITECT OF ANY DISCREPANCIES BEFORE WORK COMMENCES.

DO NOT SCALE DRAWINGS



1 CANOPY COVERAGE & SOIL VOLUMES
L - 02 Scale: 1:1200

Soil Volume Area, Tree Quantity and Size	Tree Quantity	OTTAWA Target Soil Volume (m ³)	Design Soil Volume	Soil Adequacy percentage	%Soil to be supplied by contractor
AREA A - 4 Medium trees plant bed (298 sq m x 0.4 ave metre deep)	4	120.0	119.2	99%	2
AREA B - 2 Medium, 1 Small Trees plant bed (131 sq m x 0.4 ave metre deep)	3	55.0	52.4	95%	2
AREA B 1 - 4 Medium trees plant bed (241 sq m x 0.4 ave metre deep)	4	100.0	96.4	96%	1
AREA C - 3 Small trees plant bed (65 sq m x 0.7 ave metre deep)	3	45.0	45.5	101%	1
AREA D - 2 Large, 1 Small, 3 Existing trees plant bed (430 sq m x 0.4 ave metre deep)	6	119.0	172.0	145%	3
AREA E - 8 Large, 4 Medium, 4 Small, 1 Coniferous trees plant bed (1253 sq m x 0.4 ave metre deep)	17	350.0	501.2	143%	4
AREA E1 - 4 Large trees plant bed (342 sq m x 0.4 ave metre deep)	4	100.0	136.8	137%	4
AREA E2 - 5 Large, 8 Coniferous trees plant bed (936 sq m x 0.4 ave metre deep)	13	269.0	374.4	139%	4
AREA F - 1 Medium, 2 Small trees plant bed (105 sq m x 0.5 ave metre deep)	3	48.0	52.5	109%	1
AREA G - 8 Large, 9 Existing trees plant bed (1296 sq m x 0.4 ave metre deep)	17	362.0	518.4	143%	3
AREA G1 - 3 Small trees plant bed (51.6 sq m x 0.9 ave metre deep)	3	45.0	46.4	103%	1
AREA G2 - 1 Small tree plant bed (78.5 sq m x 0.4 ave metre deep)	1	25.0	31.4	126%	1
AREA G3 - 7 Medium, 1 Small trees plant bed (479 sq m x 0.4 ave metre deep)	8	144.0	191.6	133%	1
AREA H - 4 Large, 1 Medium, 1 Small trees plant bed (414 sq m x 0.4 ave metre deep)	6	133.0	165.6	125%	3
AREA H1 - 5 Medium, 3 Small trees plant bed (480 sq m x 0.4 ave metre deep)	8	144.0	192.0	133%	1
AREA H2 - 1 Large, 3 Large Columnar, 6 Medium trees plant bed (727 sq m x 0.4 ave metre deep)	10	180.0	290.8	162%	1
AREA I - 18 Large, 3 Medium, 3 Small, 27 Coniferous trees plant bed (3650 sq m x 0.4 ave metre deep)	51	1035.0	1460.0	141%	4
AREA J - 1 Medium trees plant bed (126 sq m x 0.4 ave metre deep)	1	30.0	50.4	168%	1
AREA J1 - 2 Ornamental trees plant bed (42 sq m x 0.6 ave metre deep)	2	24.0	25.2	105%	1
AREA K - 6 Large, 16 Medium, 13 Coniferous trees plant bed (2862 sq m x 0.4 ave metre deep)	45	672.0	1144.8	170%	4

* Smaller columnar trees, small ornamental trees with growth to 8-15cm DBH, large shrubs, and columnar conifers calculated using 'How much soil to grow a big tree' by DeepRoot as a guide

- LEGEND
- EXISTING TREES TO BE PRESERVED
 - PROPOSED TREES
 - TP TREE PROTECTION FENCE

TREE CANOPY COVERAGE		
TOTAL CANOPY AREA	13154.91	m2
TOTAL SITE AREA	73966	m2
PERCENT COVERAGE	17.79%	

NOTES:
PLANTING MEDIUM REQUIREMENTS FOR TREE PLANTING

1 WHERE SOIL VOLUMES ARE WITHIN EXCAVATED DEVELOPMENT AREA:
PROVIDE 100% PLANTING MEDIUM TO DEPTHS INDICATED IN SOIL VOLUME CHART.
WHERE SUBSOIL BELOW THE INDICATED DEPTH OF PLANTING MEDIUM IS NOT CONDUCTIVE TO PLANT GROWTH, REPLACE WITH APPROVED SUBSOIL TO A FURTHER DEPTH OF 300mm.

2 WHERE SOIL VOLUMES INCLUDE SOIL VOLUMES IN R.O.W. AT PROPERTY LINE
R.O.W. AND WITHIN SUBJECT PROPERTY:
ASSUME ALL SOIL VOLUME REQUIREMENTS ARE MET WITHIN THE R.O.W. AREA. REINSTATE ANY DISTURBED AREAS IN R.O.W. OUTSIDE THE 2m RADIUS TREE PITS WITH 100-150mm TOPSOIL AND SOD.
PLACE PLANTING MEDIUM (TO DEPTH INDICATED ON SOIL VOLUME CHART) AT ALL DISTURBED AREAS WHERE EXISTING SOILS ARE REMOVED, OR WHERE EXISTING SOILS ARE NOT CONDUCTIVE TO PLANT GROWTH.
ADDITIONAL PLANTING MEDIUM IS NOT REQUIRED WHERE EXISTING SOIL IS PRESENT IN OR ADJACENT TO THE R.O.W. THIS DOES NOT INCLUDE TOPSOIL REQUIRED FOR SODDING.
WHERE SUBSOIL BELOW THE INDICATED DEPTH OF PLANTING MEDIUM IS NOT CONDUCTIVE TO PLANT GROWTH, REPLACE WITH APPROVED SUBSOIL TO A FURTHER DEPTH OF 300mm.

BASE CONTRACT TO ASSUME SUBSOIL IS CONDUCTIVE TO PLANT GROWTH.

3 WHERE SOIL VOLUMES INCLUDE SOIL VOLUMES ON ADJACENT PROPERTY AT PROPERTY LINE
ADJACENT PROPERTY AND WITHIN SUBJECT PROPERTY:
ASSUME ALL SOIL VOLUME REQUIREMENTS ARE MET WITHIN THE ADJACENT PROPERTY AREA. REINSTATE ANY DISTURBED AREAS ON ADJACENT PROPERTY OUTSIDE THE 2m RADIUS TREE PITS WITH 100-150mm TOPSOIL AND SOD.
PLACE PLANTING MEDIUM (TO DEPTH INDICATED ON SOIL VOLUME CHART) AT ALL DISTURBED AREAS WHERE EXISTING SOILS ARE REMOVED, OR WHERE EXISTING SOILS ARE NOT CONDUCTIVE TO PLANT GROWTH.
ADDITIONAL PLANTING MEDIUM IS NOT REQUIRED WHERE EXISTING SOIL IS PRESENT IN OR ADJACENT TO THE ADJACENT PROPERTY. THIS DOES NOT INCLUDE TOPSOIL REQUIRED FOR SODDING.
WHERE SUBSOIL BELOW THE INDICATED DEPTH OF PLANTING MEDIUM IS NOT CONDUCTIVE TO PLANT GROWTH, REPLACE WITH APPROVED SUBSOIL TO A FURTHER DEPTH OF 300mm.

BASE CONTRACT TO ASSUME SUBSOIL IS CONDUCTIVE TO PLANT GROWTH.

4 AREAS NEAR SOCCER FIELD AND OUTDOOR CLASSROOM

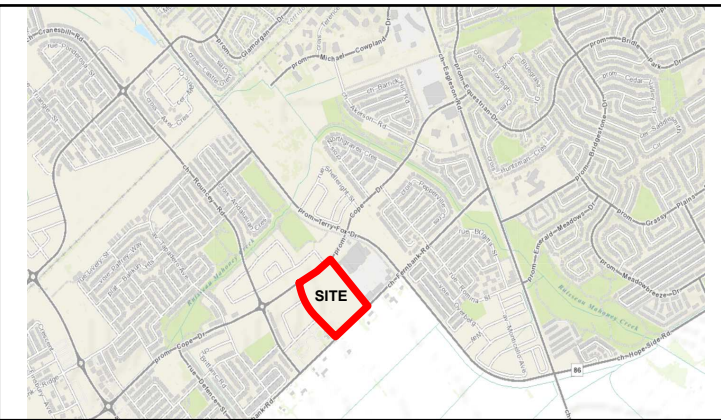
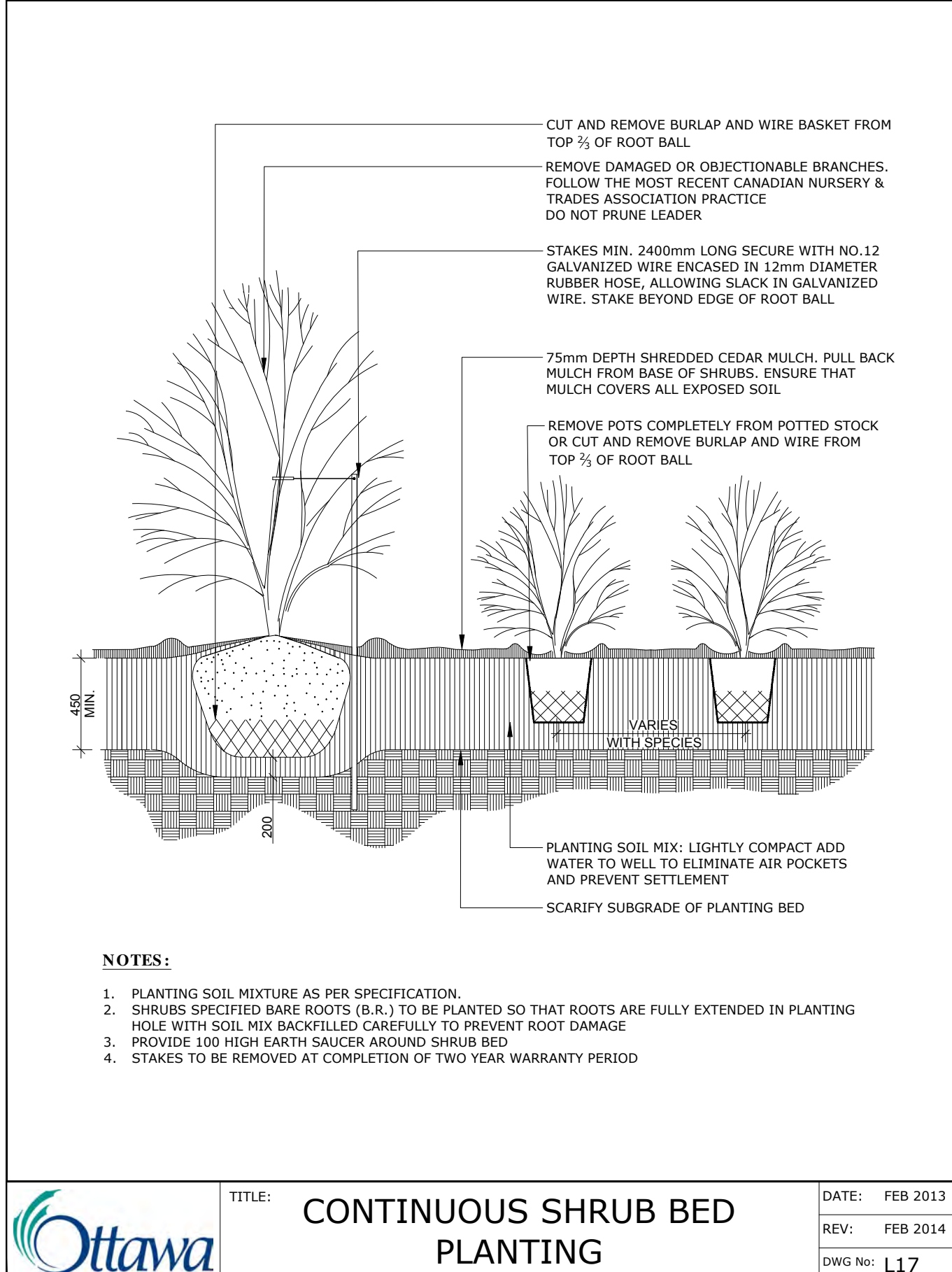
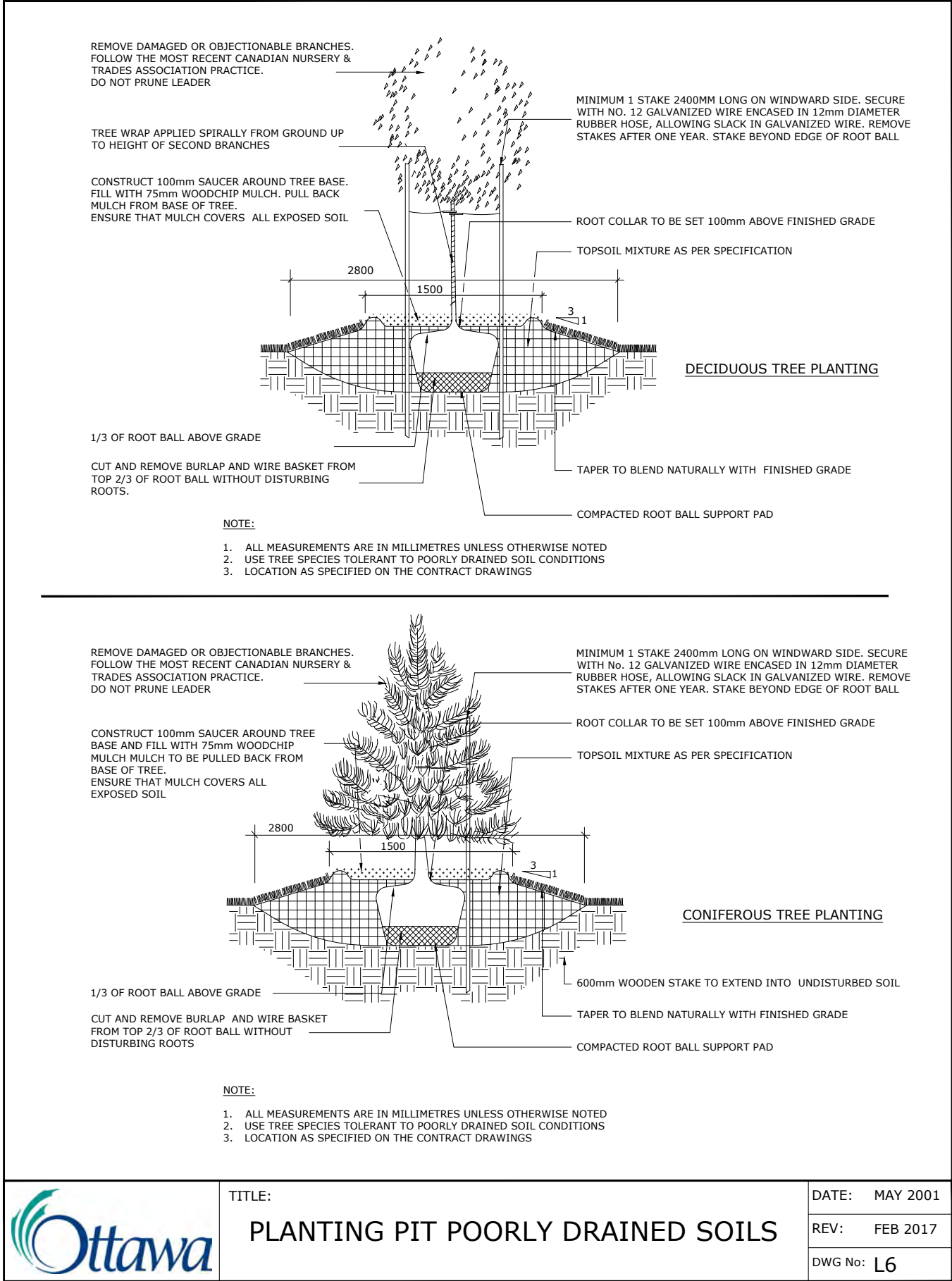
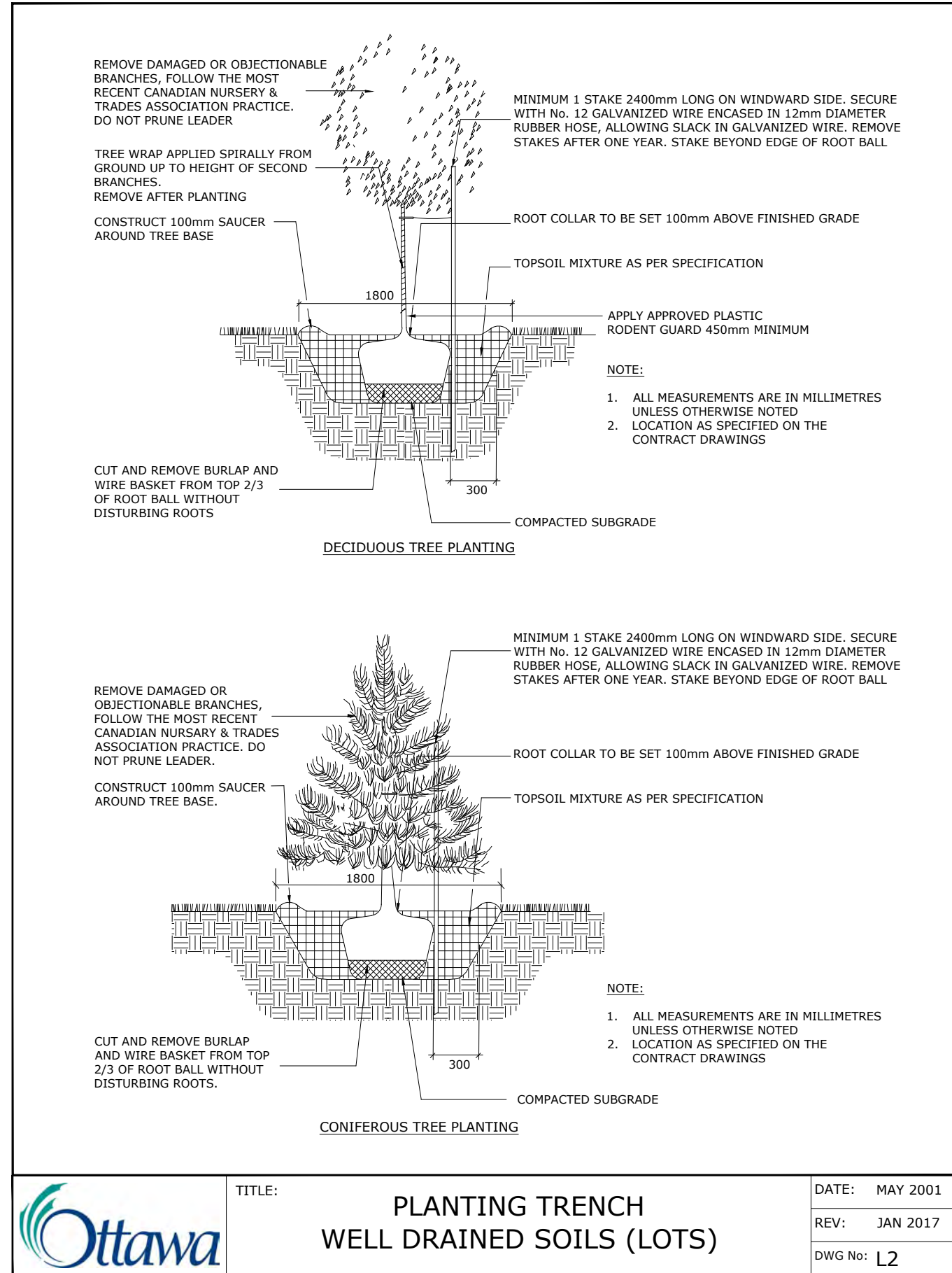
ASSUME ALL SOIL VOLUME REQUIREMENTS ARE MET, REINSTATE ANY DISTURBED AREAS ON ADJACENT PROPERTY OUTSIDE THE 2m RADIUS TREE PITS WITH 100-150mm TOPSOIL AND SOD.
ADDITIONAL PLANTING MEDIUM IS NOT REQUIRED WHERE EXISTING SOIL IS PRESENT IN OR ADJACENT TO THE ADJACENT PROPERTY. THIS DOES NOT INCLUDE TOPSOIL REQUIRED FOR SODDING.
WHERE SUBSOIL BELOW THE INDICATED DEPTH OF PLANTING MEDIUM IS NOT CONDUCTIVE TO PLANT GROWTH, REPLACE WITH APPROVED SUBSOIL TO A FURTHER DEPTH OF 300mm.

BASE CONTRACT TO ASSUME SUBSOIL IS CONDUCTIVE TO PLANT GROWTH.

NOTES:
TREE SOIL VOLUME REQUIREMENTS:
STANDARD TREE SOIL VOLUMES QUANTITIES INCLUDE THE TOP 900-1000mm OF SOIL/EXISTING SUBSOIL LAYER TO CALCULATE TOTAL SOIL VOLUMES REQUIRED BY CITY OF OTTAWA FOR SUSTAINABLE TREE GROWTH. WHERE LARGER SOFT AREAS ARE AVAILABLE, THE TOP 400-500mm LAYER IS USED TO CALCULATE SOIL VOLUMES (AS PER CITY DETAL L1).

WHERE EXISTING MATERIAL BELOW THE SPECIFIED IMPORTED TOPSOIL IS NOT CONDUCTIVE TO TREE GROWTH, AN ADDITIONAL LAYER OF PLANTING MEDIUM IS TO BE INSTALLED BELOW SPECIFIED TOPSOIL DEPTH TO OBTAIN THE SOIL VOLUME DEPTH REQUIRED.

REFER TO SOIL VOLUME CHART AND PLANS ON L-02 FOR AREAS WHERE TREE SOIL VOLUMES ARE REQUIRED.



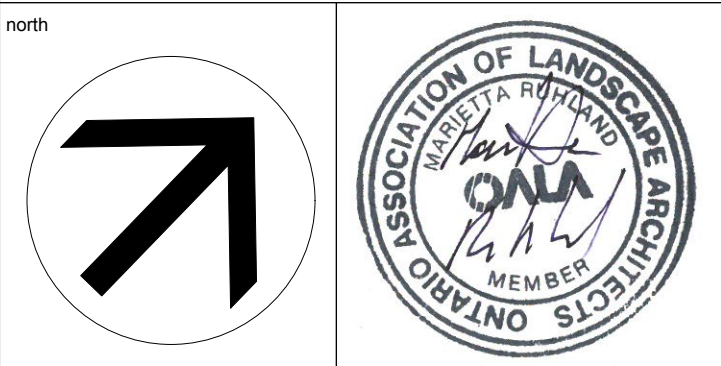
ARCHITECT:
N45 ARCHITECTURE INC
71 BANK STREET, 7TH FLOOR
OTTAWA, ONTARIO, K1P 5N2
613.224.0095
LANDSCAPE ARCHITECT:
RUHLAND & ASSOCIATES LTD.
200-1750 COURTWOOD CRESCENT
OTTAWA, ONTARIO, K2C 2B5
613.224.4744
CIVIL ENGINEER:
JP2G CONSULTANTS INC.
1150 MORRISON DRIVE, SUITE 410
OTTAWA, ONTARIO, K2H 8S9
613.828.7800
MECHANICAL & ELECTRICAL ENGINEER:
GOODKEY, WEEDMARK & ASSOCIATES LTD.
1688 WOODWARD DRIVE
OTTAWA, ONTARIO, K2C 3R8
LAND SURVEYOR:
ANNIS, O'SULLIVAN, VOLLEBEKK LTD
14 CONCOURSE GATE, SUITE 500
OTTAWA, ONTARIO, K2E 7S6
GEO/TECHNICAL ENGINEER & ENVIRONMENTAL:
EXP SERVICES INC.
100-2650 QUEENSVIEW DRIVE
OTTAWA, ONTARIO K2B 8H6
TRAFFIC ENGINEER:
ROBINSON CONSULTANTS
210-350 PALLADIUM DRIVE
OTTAWA, ONTARIO, K2V 1A8

no.	revision	date
04		
03	Reissued for SPC Drawings	2025/11/27
02	Issued for 66% Drawings	2025/10/28
01	Issued for SPC submission	2025/10/28

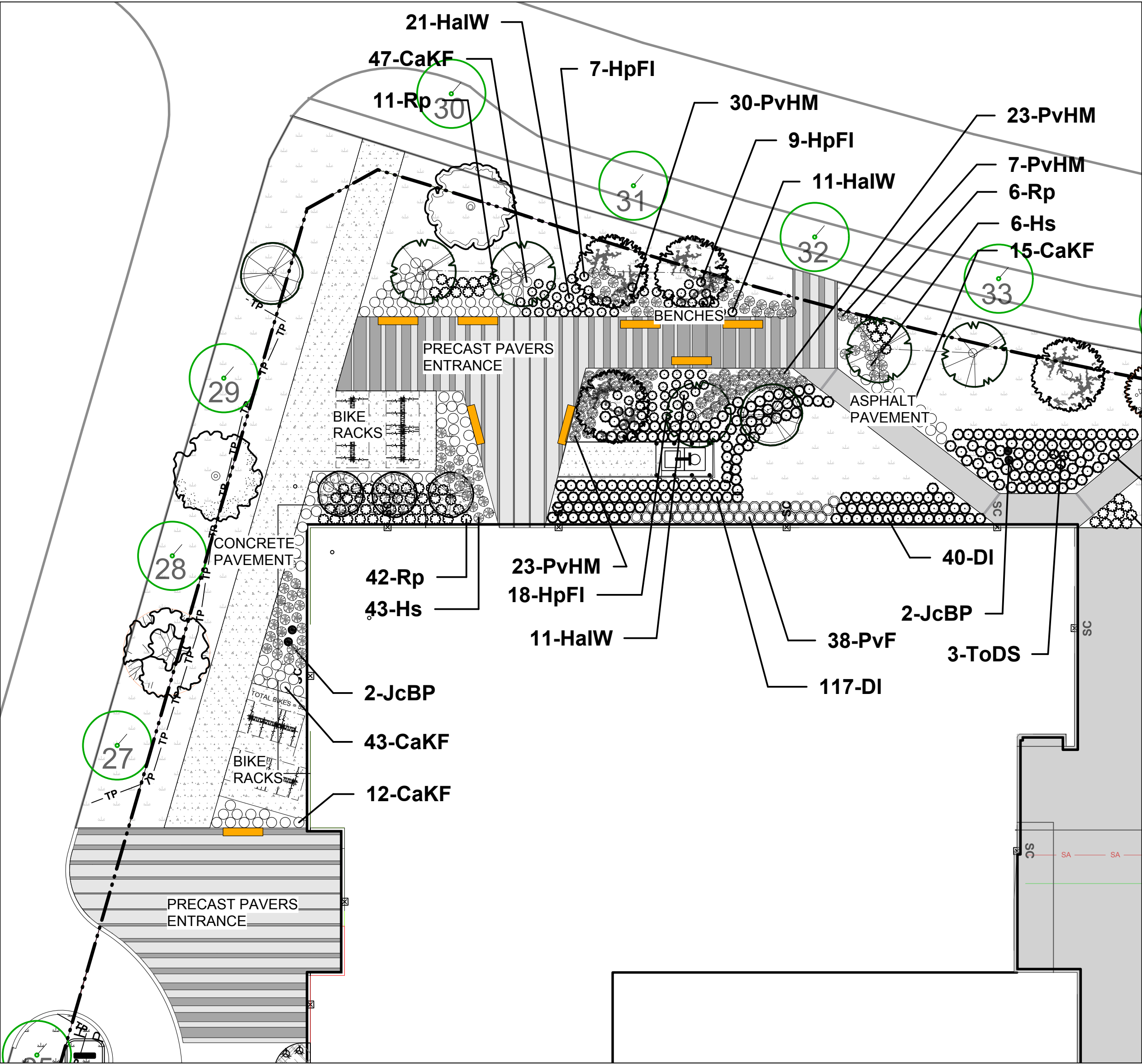
N45 ARCHITECTURE INC.
71 Bank Street, 7th Floor - Ottawa, Ontario, K1P 5N2
tel. 613.224.0095 fax 613.224.9811

Ruhland & Associates Ltd
landscape architecture • urban design • site planning
Ph 613-224-0744 Fx 613-224-1131 info@rala.ca www.rala.ca

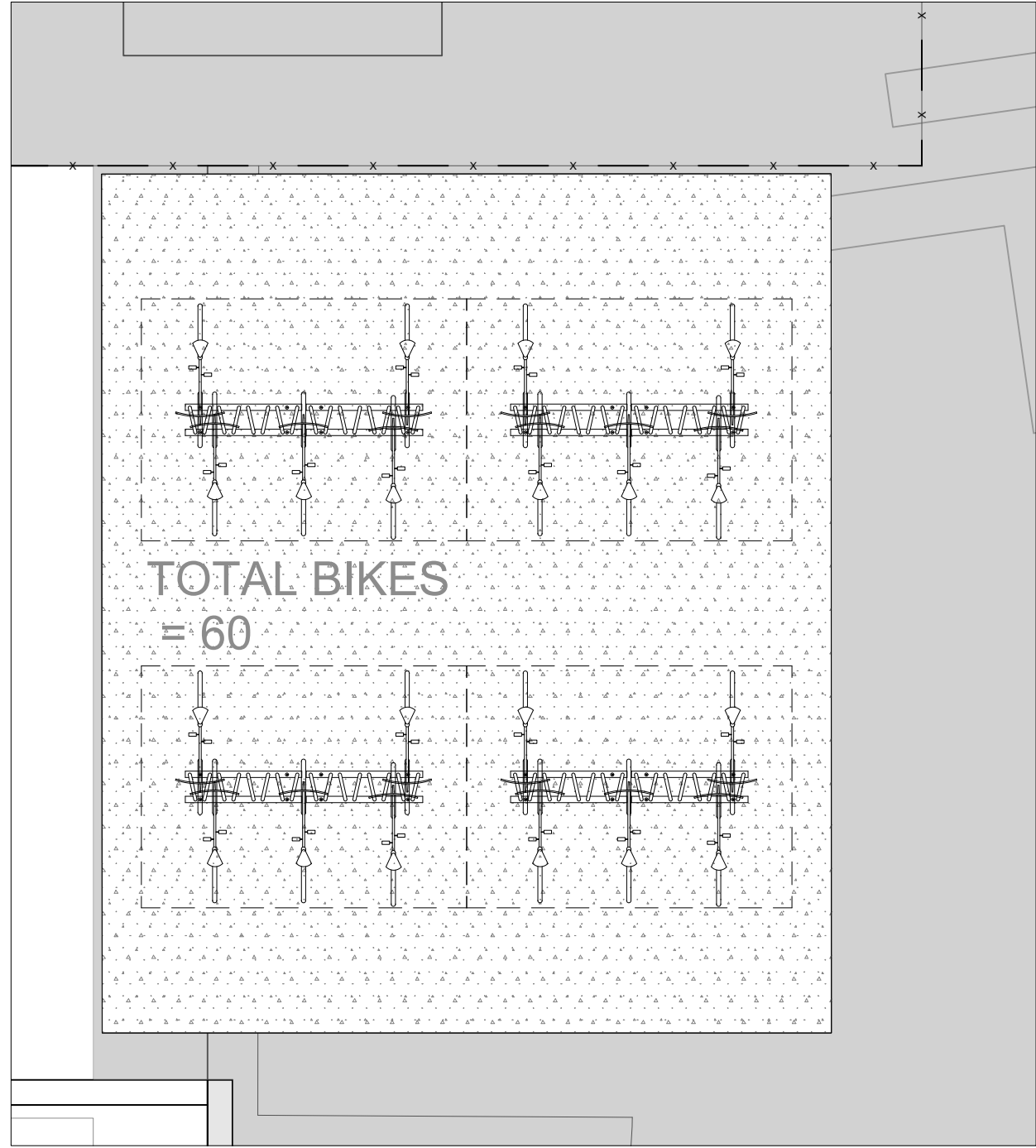
FERNBANK CATHOLIC HIGHSCHOOL
5431 FERNBANK ROAD
OTTAWA, ONTARIO
K2S 0T7



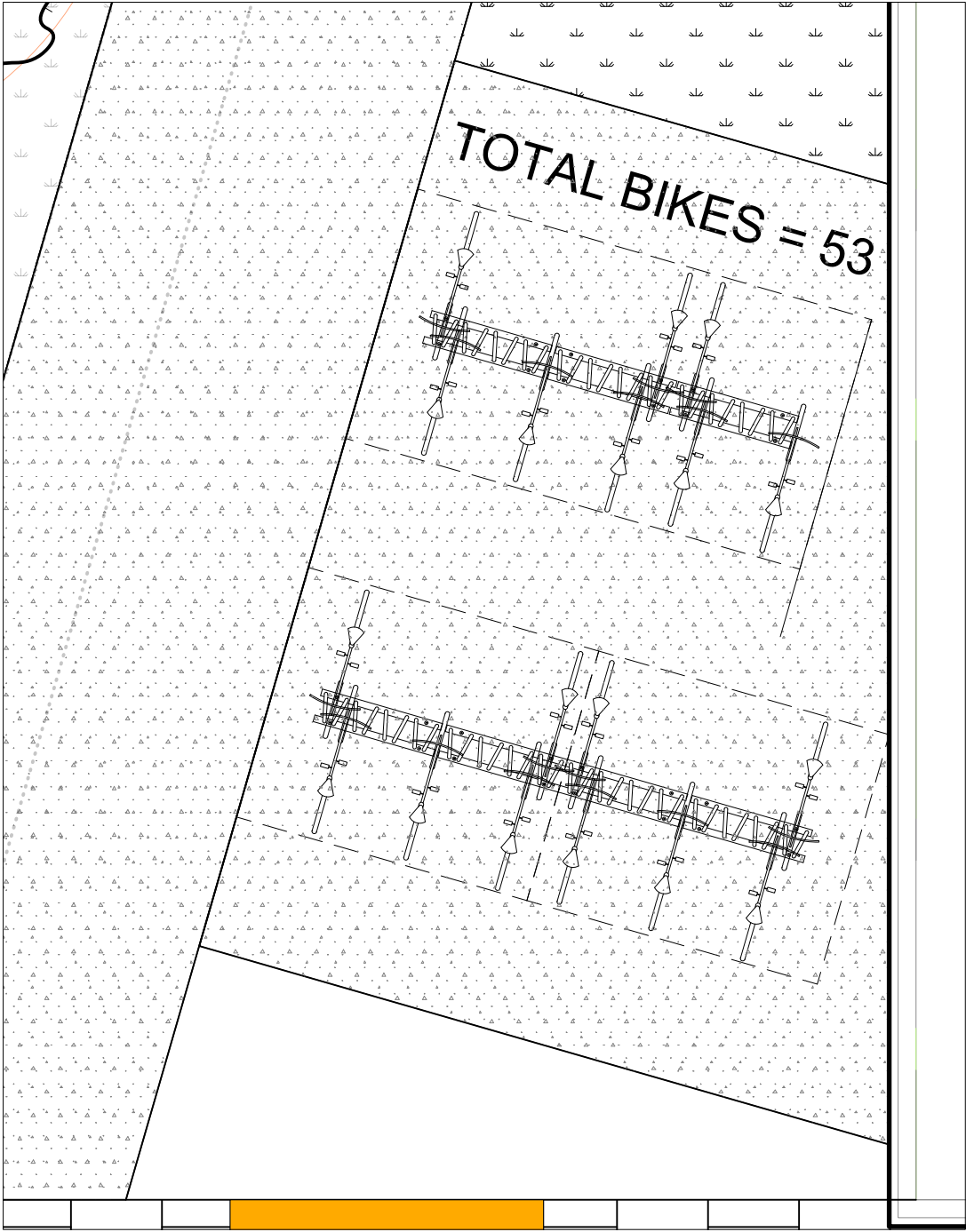
CANOPY COVERAGE & SOIL VOLUMES		
scale	1:400	drawn by D.A.
date		checked by M.R.
project number	N45	drawing number
RA	24-1743	L - 02
CONTRACTOR TO VERIFY ALL DIMENSIONS AND NOTIFY THE ARCHITECT OF ANY DISCREPANCIES BEFORE WORK COMMENCES.		
DO NOT SCALE DRAWINGS		



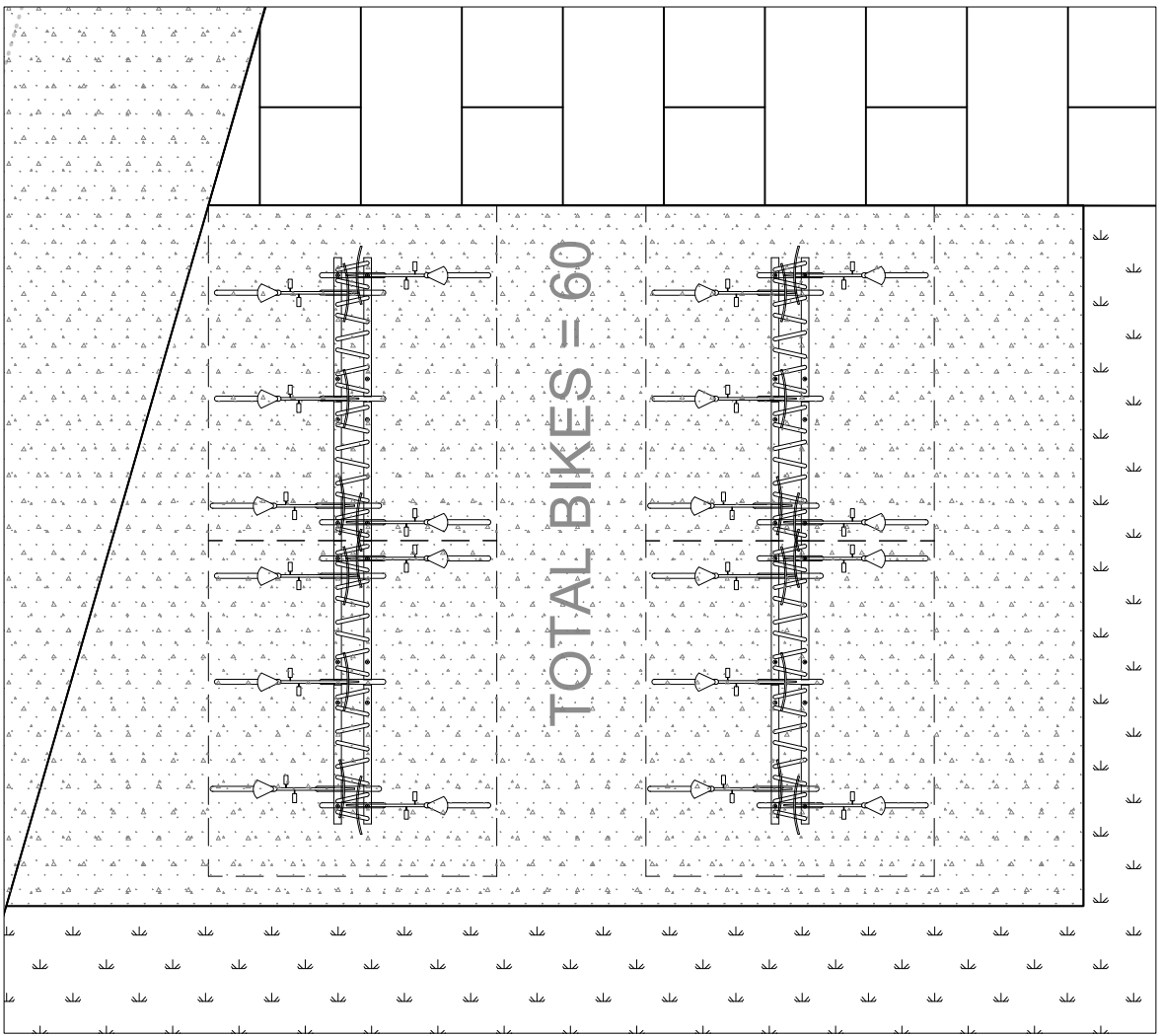
1 FRONT PLAZA PLAN
Scale: 1:300



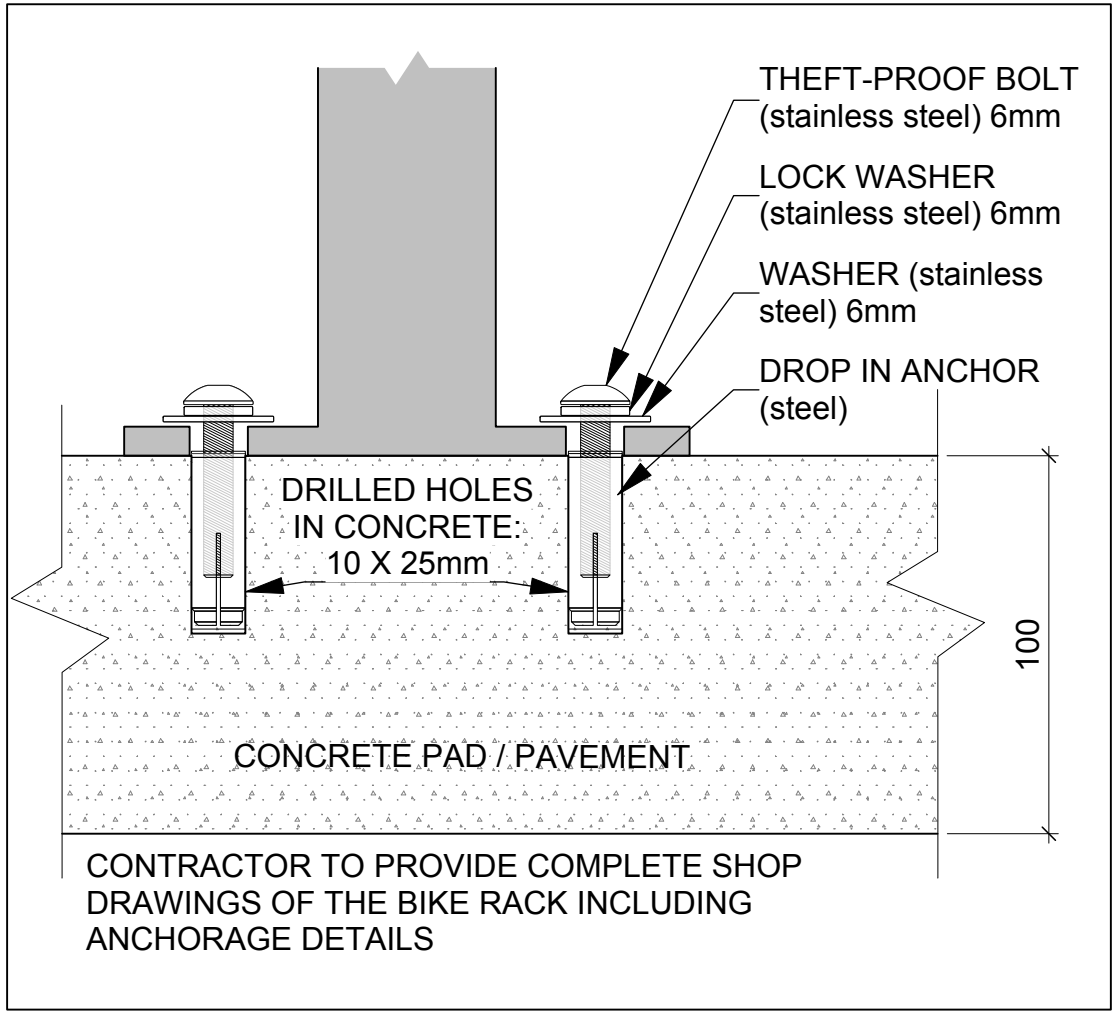
2 ENLARGEMENT - BIKE RACK 1
Scale: 1:75



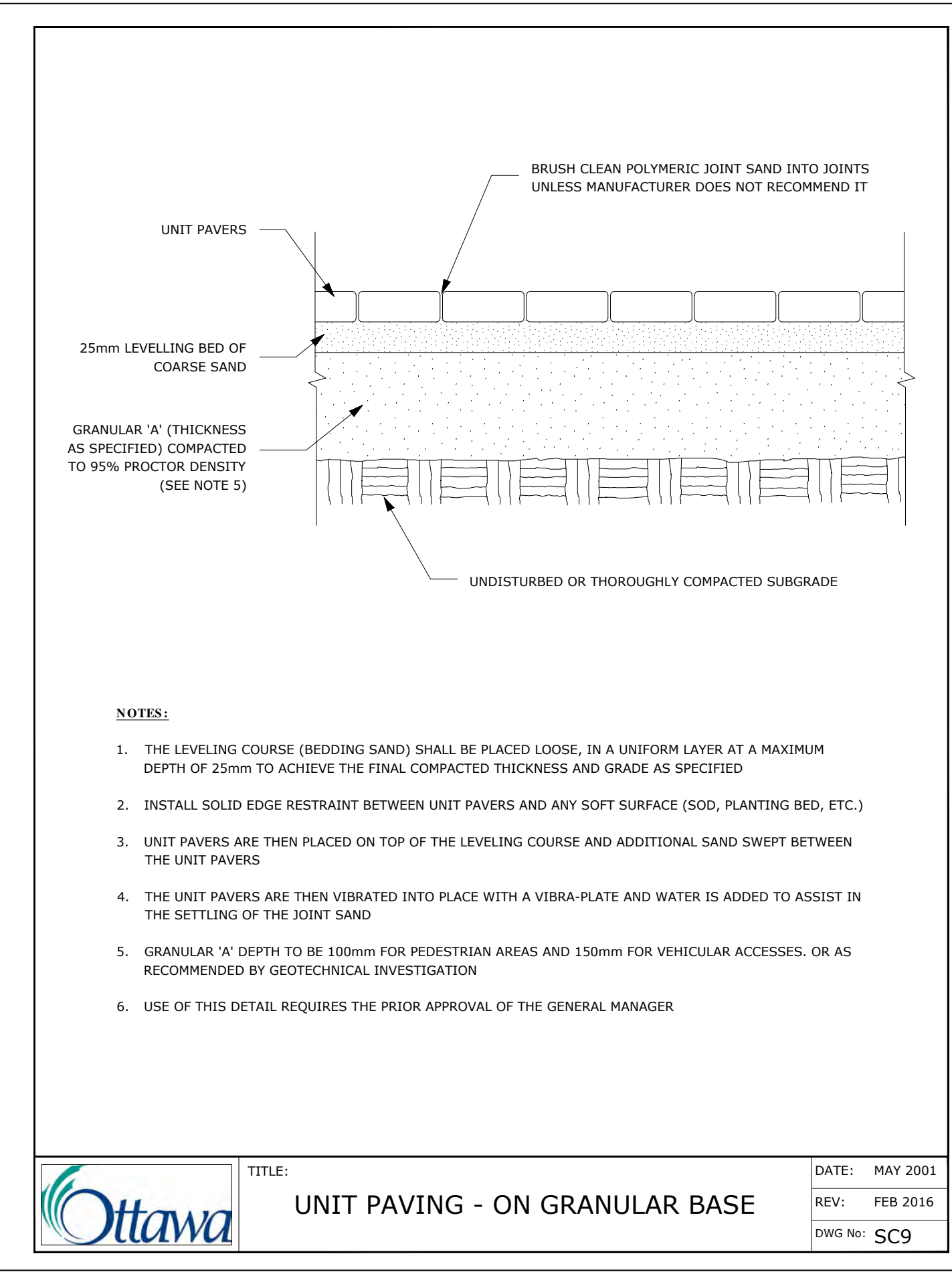
3 ENLARGEMENT - BIKE RACK 2
Scale: 1:75



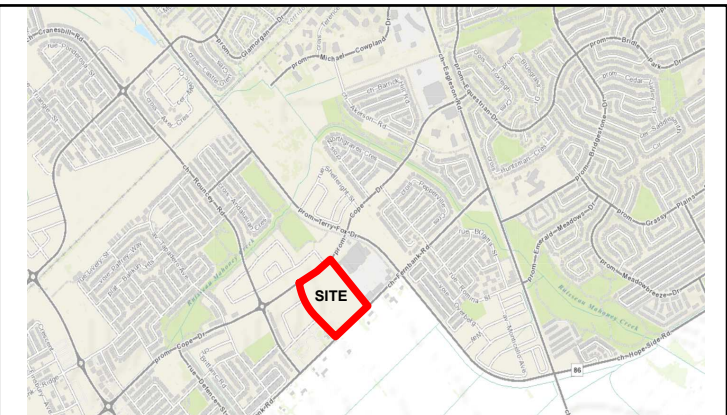
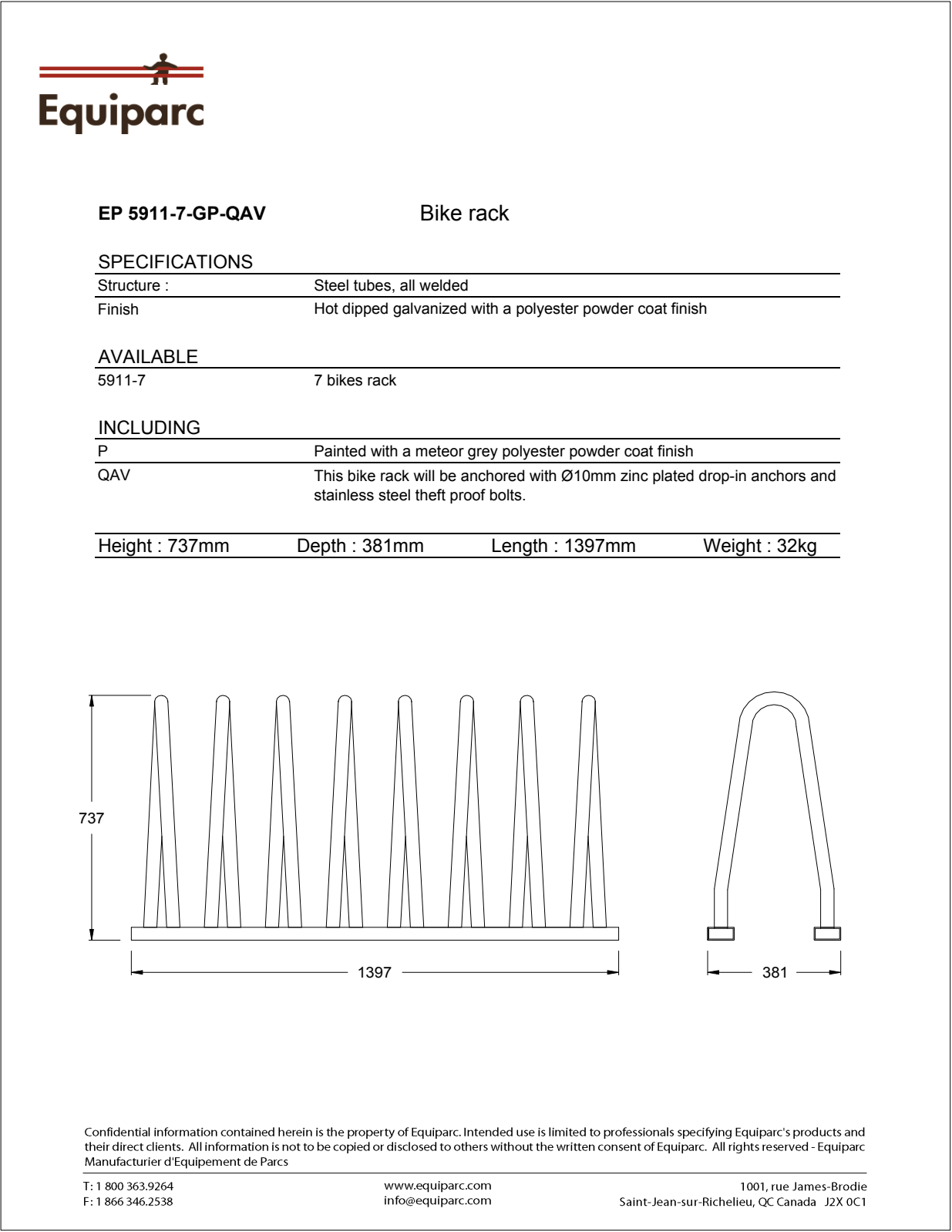
4 ENLARGEMENT - BIKE RACK 3
Scale: 1:75



5 BIKE RACK ANCHORING
Scale: NTS



ADDITIONAL NOTES :
PRECAST PAVERS IN VEHICULAR AREAS TO RECEIVE SAME BASE STRUCTURES FOR GRANULAR A' AND B' AS GEOTECHNICAL RECOMMENDATIONS FOR HEAVY DUTY PAVEMENT. PEDESTRIAN AREAS ARE TO RECEIVE 200mm COMPACTED GRANULAR A' MINIMUM, ADJUSTMENTS TO BE SPECIFIED IN RELATION TO SITE CONDITIONS AND GEOTECHNICAL RECOMMENDATIONS.



ARCHITECT: N45 ARCHITECTURE INC 71 BANK STREET, 7TH FLOOR OTTAWA, ONTARIO, K1P 5N2 613.224.0095 VLADIMIRP@N45.CA		
LANDSCAPE ARCHITECT: RUHLAND & ASSOCIATES LTD. 200-1750 COURTWOOD CRESCENT OTTAWA, ONTARIO, K2C 2B5 613.224.4744 MRUHLAND@RALA.CA		
CIVIL ENGINEER: JP2G CONSULTANTS INC. 1150 MORRISON DRIVE, SUITE 410 OTTAWA, ONTARIO, K2H 8S9 613.828.7800 ZACH.BAUMAN@JP2G.COM		
MECHANICAL & ELECTRICAL ENGINEER: GOODKEY, WEEDMARK & ASSOCIATES LTD. 1688 WOODWARD DRIVE OTTAWA, ONTARIO, K2C 3R8 613.727.5111 x299 RAJV@GWL.COM		
LAND SURVEYOR: ANNIS, O'SULLIVAN, VOLLEBEKK LTD 14 CONCOURSE GATE, SUITE 500 OTTAWA, ONTARIO, K2E 7S6 613.727.0850 NEPEAN@AOVLTD.COM		
GEOTECHNICAL ENGINEER & ENVIRONMENTAL: EXP SERVICES INC. 100-2650 QUEENSVIEW DRIVE OTTAWA, ONTARIO K2B 8H6 613.688.1899 x63242 ISMAIL.TAKI@EXP.COM		
TRAFFIC ENGINEER: ROBINSON CONSULTANTS 210-350 PALLADIUM DRIVE OTTAWA, ONTARIO, K2V 1A8 613.592.6060 AHOWELL@RCII.COM		
04		
03	Reissued for SPC Drawings	2025/11/27
02	Issued for 66% Drawings	2025/10/28
01	Issued for SPC submission	2025/10/28
no.	revision	date

N45 ARCHITECTURE INC.
71 Bank Street, 7th Floor - Ottawa, Ontario, K1P 5N2
tel. 613.224.0095 fax 613.224.9811

Ruhland & Associates Ltd
landscape architecture • urban design • site planning
Ph 613-224-0744 Fx 613-224-1131 info@rala.ca www.rala.ca

FERNBANK CATHOLIC HIGH SCHOOL

5431 FERNBANK ROAD
OTTAWA, ONTARIO
K2S 0T7



drawing title ENLARGEMENT & DETAILS		
scale 1:400	drawn by D.A.	
date	checked by M.R.	
project number N45	drawing number -	
RA 24-1743	L - 03	
CONTRACTOR TO VERIFY ALL DIMENSIONS AND NOTIFY THE ARCHITECT OF ANY DISCREPANCIES BEFORE WORK COMMENCES.		revision
DO NOT SCALE DRAWINGS		