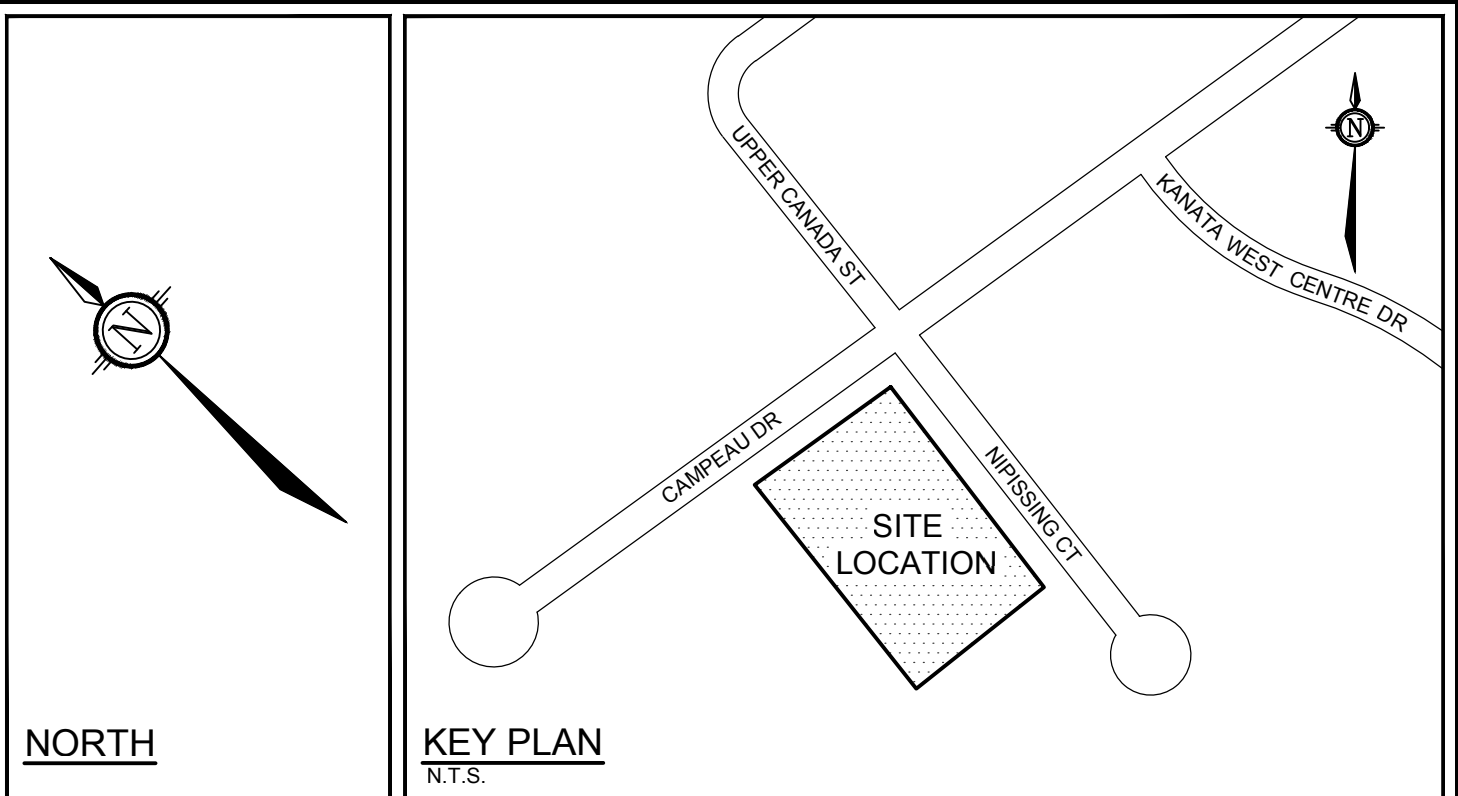
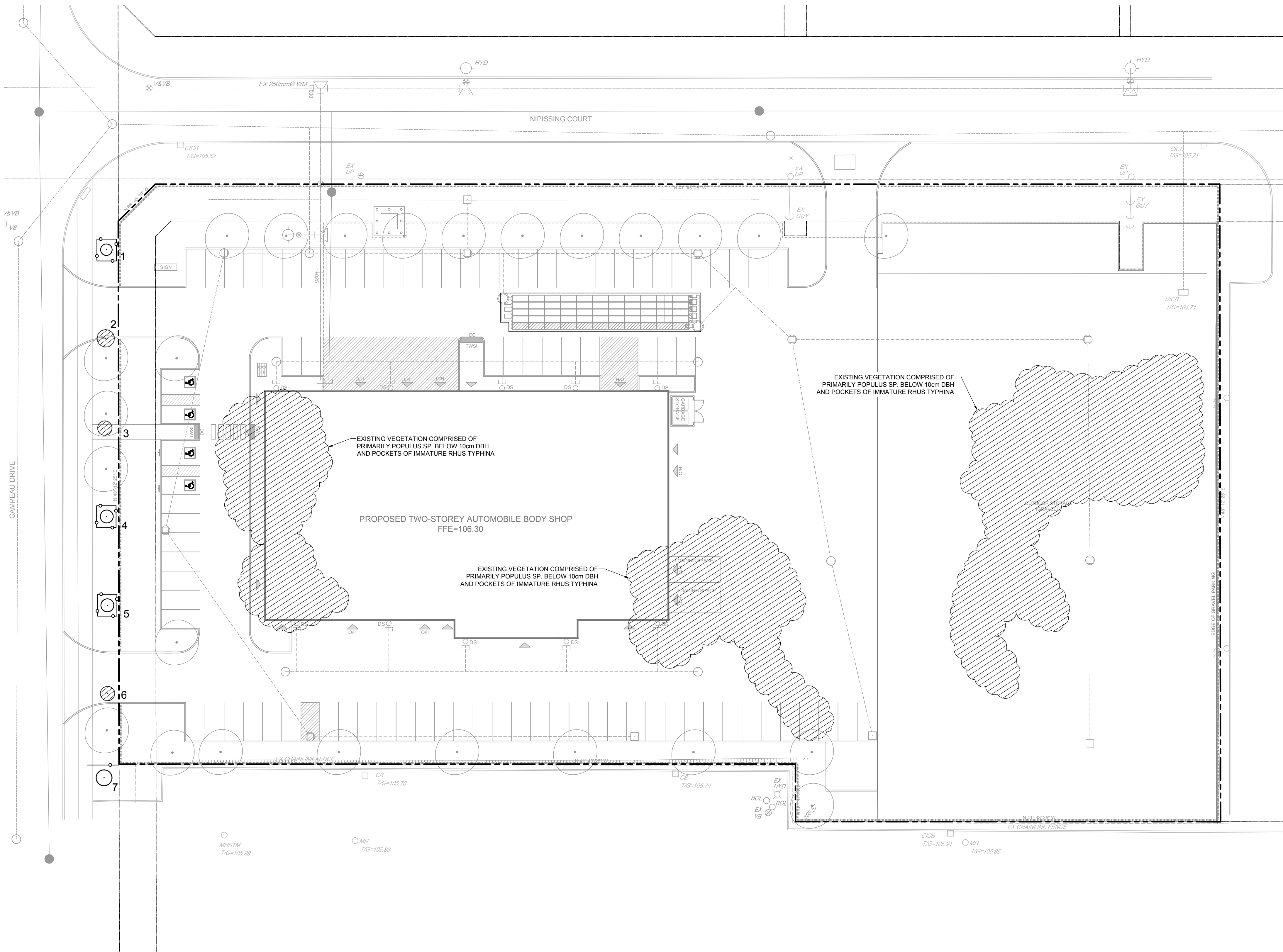


Legend			
G	Good	CONFLICT	Remove due to conflict with construction.
F	Fair	REMOVE	Remove due to tree health or invasive status.
P	Poor	PROTECT	Protect trees as per contract details and specifications.
VP	Very Poor		

No.	Botanical Name	Common Name	DBH (cm)	CRZ (m)	Condition	Owner	Remarks	Recomm.
1	<i>Ulmus sp.</i>	Elm	8.0	0.80	G	P		PROTECT
2	<i>Ulmus sp.</i>	Elm	12.0	1.20	G	P		Conflict
3	<i>Tilia americana</i>	Basswood	10.0	1.00	F	P	Epicormic branching	Conflict
4	<i>Tilia americana</i>	Basswood	9.0	0.90	F	P	Epicormic branching	PROTECT
5	<i>Tilia americana</i>	Basswood	9.0	0.90	F	P	Epicormic branching	PROTECT
6	<i>Quercus macrocarpa</i>	Bur Oak	10.0	1.00	F	P	Severe Lean	Conflict
7	<i>Quercus macrocarpa</i>	Bur Oak	11.0	1.10	G	P		PROTECT



3-D1

DETAIL SHEET # \_\_\_\_\_ NOVATECH OR CITY  
EG. L1, L2, ETC. — DETAIL NUMBER SEE LIST  
FOR CODE

PROPERTY LIMIT

EXISTING VEGETATION TO REMOVE

EXISTING TREE TO REMOVE,  
SYMBOL SIZE REFLECTS CRZ

EXISTING TREE TO REMAIN,  
SYMBOL SIZE REFLECTS CRZ

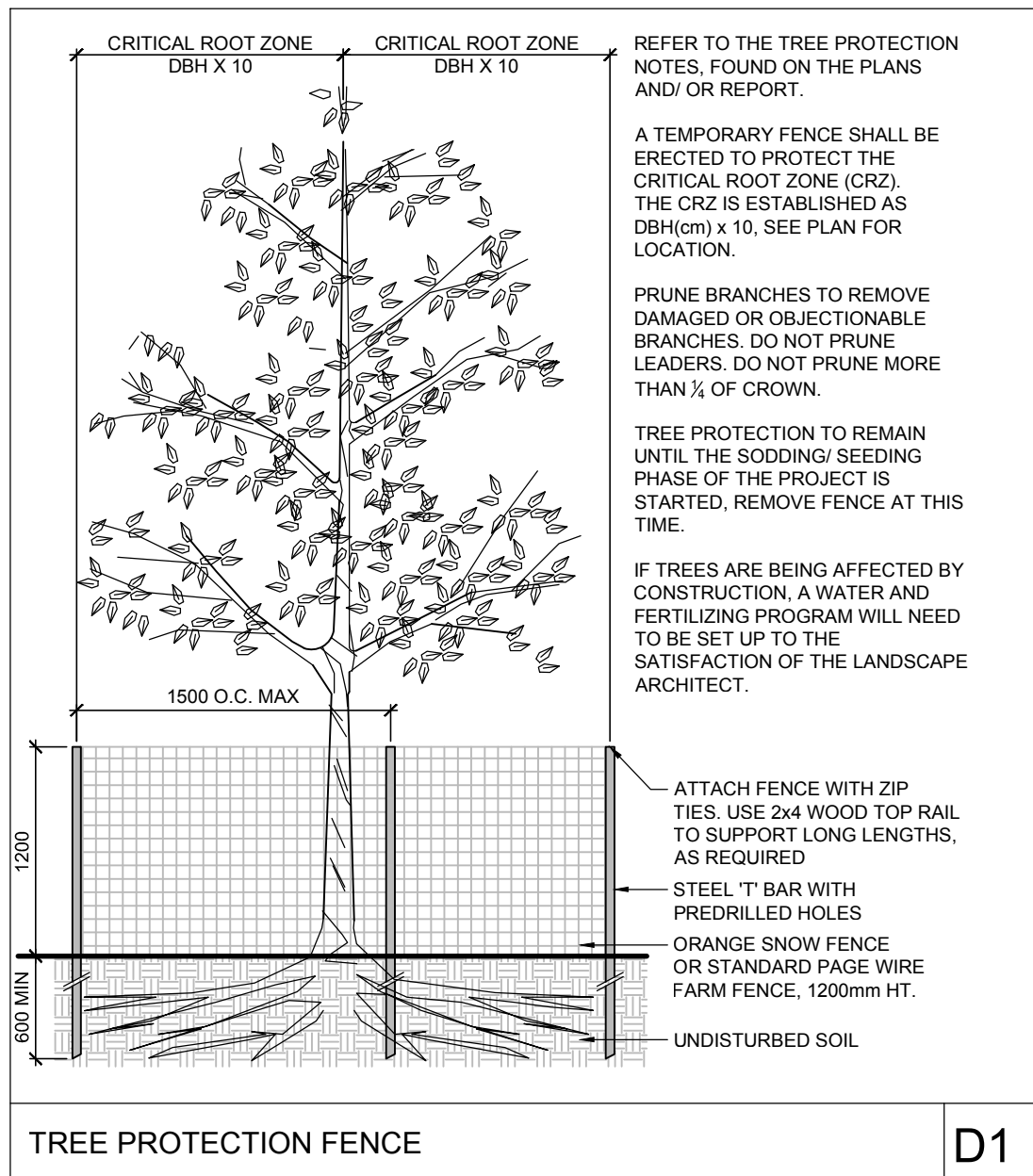
PRELIMINARY TREE COMPENSATION  
PLANTING LOCATION

TREE PROTECTION FENCE

1. Read and interpret this drawing/ drawing set in conjunction with all the contract details and specifications, including related civil, utility, structural, architectural, mechanical, electrical, environmental, geotechnical, and survey information.
2. The Contractor is to determine the exact location, size, material, and elevation of all existing utilities prior to commencing construction. Protect and assume responsibility for all existing utilities regardless of being shown on the drawings.
3. It is essential to use the plans and details in conjunction with the specifications and notes.
4. Do not scale drawings. Work to dimensions only.
5. Protect all existing and retained vegetation for the duration of construction according to the contract details and specifications.
6. Reinstall all areas and items damaged or disturbed, beyond the Limit of Work, because of construction activities, including but not limited to construction staging areas, haul roads, stockpiles, etc. to the satisfaction of the Consultant. Unless otherwise noted, Contractor is to reinstall all areas to pre-construction condition or better to the satisfaction of the Contract Administrator.

Implement the following protection measures for retained trees, both on site and on adjacent sites, prior to any work activity, including tree removal. Maintain tree protection fence in place and in good condition for the duration of site works:

1. The Landscape Architect or Certified Arborist is to determine the location of the tree protection fencing and detail it on any associated plans for the site (e.g. tree conservation report, tree disclosure report, etc.).
2. Under the guidance of a Landscape Architect or Certified Arborist, a 60 cm diameter critical root zone (CRZ) of trees. Diameter at breast height (DBH) is the trunk diameter measured at 1.3m height on the tree trunk. The CRZ is calculated as DBH x 10. Refer to the Tree Protection Fence detail.
3. Refer to the Tree Protection Plan for fence location. City Forestry Staff are to approve both the plan and the installed fence prior to work commencement.
4. Do not place any material or equipment within 2m of the CRZ of any tree, including outcashes.
5. Do not attach any signs, notices, or posters to any tree.
6. Do not disturb, raise, or lower the existing grade within the CRZ without approval.
7. Only tunnel or bore when digging within the CRZ of a tree. Hand work only where required within the CRZ, absolutely no machinery permitted.
8. Do not damage the root system, trunk, or branches, or any tree.
9. Do not extend hard surface or significantly change landscaping.
10. Ensure that exhaust fumes from all equipment are directed away from any tree canopy.
11. When trees marked for removal overlap with the CRZ of trees marked for preservation: cut roots at the edge of the CRZ and grind down stumps after tree removals, do not pull out stumps. Ensure there is not root pulling or disturbance of the ground within the CRZ.
12. Prior to work taking place, notify and consult the Landscape Architect and City Forestry Staff if roots must be cut. Roots must be cut straight down, cut at right angles with clean, sharp horizontal tools without tearing, crushing, or pulling. Refer to City of Ottawa Specification S.P.-8011 Tree Protection, Excavation or Root Zone.
13. If damaged or objectionable branches are observed, consult the Landscape Architect, before any work is conducted. Do not prune leaders. Do not prune more than 1/4 of crown.
14. Since the City Forestry Staff program, all trees are being affected by site works, to the satisfaction of the Landscape Architect.
15. The Landscape Architect is to prescribe mitigation measures if the protected fenced area must be reduced to facilitate construction. Measures may include the placement of plywood, wood chips, or steel plating over the roots for protection. City Forestry Staff are to approve said measures prior to the fence movement.
16. City of Ottawa By-law: Protects municipal trees and municipal natural areas in the City of Ottawa and trees on private property in the urban area of the City of Ottawa (2020-340).




**NOTE:**  
THE POSITION OF ALL POLE LINES, CONDUITS,  
WATERMAINS, SEWERS AND OTHER  
UNDERGROUND AND OVERGROUND UTILITIES AND  
STRUCTURES IS NOT NECESSARILY SHOWN ON  
THE CONTRACT DRAWINGS, AND WHERE SHOWN,  
THE ACCURACY OF THE POSITION OF SUCH  
UTILITIES AND STRUCTURES IS NOT GUARANTEED.  
BEFORE STARTING WORK, DETERMINE THE EXACT  
LOCATION OF ALL SUCH UTILITIES AND  
STRUCTURES AND ASSUME ALL LIABILITY FOR  
DAMAGE TO THEM.

NOT FOR  
CONSTRUCTION

1.	ISSUED FOR COORDINATION	NOV 14/25	SC
No.	REVISION	DATE	BY

SCALE		DESIGN
		MJT
		CHECKED
		SC
		DRAWN
		MJT
		CHECKED
		SC
		APPROVED
		SC

FOR REVIEW ONLY	

 <p>Engineers, Planners &amp; Landscape Architects</p> <p>Suite 200, 240 Michael Cowpland Drive Ottawa, Ontario, Canada K2M 1P6</p> <p>Telephone (613) 254-9643 Facsimile (613) 254-5067 Website <a href="http://www.novatech-eng.com">www.novatech-eng.com</a></p>	<p>LOCATION</p> <p>CITY OF OTTAWA</p> <p>100 NIPPISSING COURT</p>	
	<p>DRAWING NAME</p> <p><b>TREE COMPENSATION PLAN</b></p>	
	<p>PROJECT No.</p> <p>124176-00</p>	
	<p>REV</p> <p>REV # 1</p>	
	<p>DRAWING No.</p> <p>124176-TCR</p>	