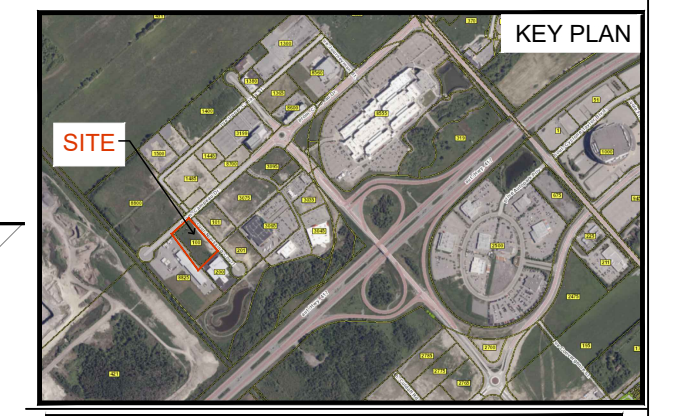


TREE SCHEDULE / TREE CANOPY CALCULATIONS									
TREE SCHEDULE - MYERS CARSTAR 100 NIPISSING COURT KANATA									
CODE	QTY	BOTANICAL NAME	COMMON NAME	B&B SPECIMEN	NATIVE TO CANADA	FORECASTED SPREAD as per City of Ottawa Extrav. DIAMETER	RADIUS	Canopy Cover Contribution/Tree in Square Metres	Total Canopy Cover
AR	3	Acer rubrum	Red Maple	50mm cal	YES	10.0M	5.0M	78.5	235.5
AS	3	Acer saccharum	Sugar Maple	50mm cal	YES	14.0M	7.0M	154	462
CO	5	Celtis occidentalis	Common Hackberry	50mm cal	YES	14.0M	7.0M	154	770
GB	9	Ginkgo biloba	Maidenhair Tree	50mm cal	YES	10.0M	5.0M	78.5	706.5
QM	3	Quercus macrocarpa	Bur Oak	50mm cal	YES	14.0M	7.0M	154	462
QR	1	Quercus rubra	Red Oak	50mm cal	YES	14.0M	7.0M	154	154
TOTAL	24								2790
TOTAL FORECASTED CANOPY COVER IN SQUARE METRES									2790
SITE AREA for TOTAL FORECASTED CANOPY COVER as Percentage of Site Area									12135
									22.99%

SHRUB PLANTING 350 Square Metres (Average Spacing 0.9m) +1.4 plants/sq. m									
Code	Qty.	Botanical Name	Common Name	Size	Condition	NATIVE			
HK	150	Hypericum kalmianum	Kalm St. John's Wort	30cm	Pot	YES			
HP	75	Hypericum prolificum	Shrubby St. John's Wort	40cm	Pot	YES			
SB	100	Spiraea bumalda 'Dart's Red'	Dart's Red Spirea	40cm	Pot				
SB	75	Spiraea bumalda 'Magic Carpet'	Magic Carpet Spirea	40cm	Pot				
SB	75	Spiraea bumalda 'Anthony Water'	Anthony Waterer Spirea	40cm	Pot				
PM	25	Pinus mugo var. pumilio	Mugho Pine	30cm spr	Pot				
TCm	25	Taxus cuspidata 'Monilo'	Emerald Spreader Yew	30cm spr	Pot				
AU	50	Arctostaphylos uva ursi	Bearberry	30cm spr	Pot	YES			
GM	50	Geranium macrorrhizum	Bigroot Geranium	9 cm Pot					
GR	50	Geranium psilostemon 'Gervat'	Rozanne Geranium	9 cm Pot					
PV	25	Panicum virgatum	Switch Grass	9 cm Pot		YES			

Drawing Remains the Property of Copyright Reserved by GJA INC. Do Not Use or Reproduce Without Approval of Gino J. Aiello.
[PLANTING MIX TO BE APPROVED BY LANDSCAPE ARCHITECT | PLANT MATERIAL TO MEET CNLA STANDARDS/BE APPROVED BY LANDSCAPE ARCHITECT PRIOR TO PLANTING ALL MATERIALS & WORK TO BE MAINTAINED UNTIL FINAL ACCEPTANCE. INCLUDE 1 YEAR WARRANTY FROM DATE OF FINAL ACCEPTANCE | REFER TO CIVIL ENGINEER'S DRAWING FOR ELEVATIONS / GRADING |
The Landscape Plan is to be read in conjunction with the grading, servicing, site and survey plan. All trees to be preserved on or directly adjacent to the site will be protected | Plant material are to be installed a minimum of 3.0m away from any part of any hydro transformer, 3.0m corridor between a fire hydrant and the curb, a 2.5m radius beside or behind a fire hydrant, 2.0m from any servicing/utility line or structure |



- LEGEND
- REFER TO TCR BY NOVATECH
- Existing Tree to Remain
 - Protection for Existing Trees
 - Existing Tree to Remove

- LANDSCAPE PROPOSED
- Deciduous Tree
 - Planting Bed
 - Shrub Planting
 - Turf
 - Concrete
 - Concrete Monolithic Curb
 - 2.0m Ht. Fence
 - 2.0m Ht. Fence
 - Rack for 2 Bikes
 - Anchor to Concrete

- SITE / ARCHITECTURE
- Fire Hydrant
 - FD Siamese Connection
 - Light Standard
 - Hydro/Utility Pole
- BELOW GRADE SERVICES REFER TO CIVIL/CUP
- U/G Water Service
 - U/G Storm Service
 - U/G Sanitary Service
 - U/G Gas Service
 - U/G TelCo Service
 - U/G Hydro Service
 - O/H Hydro Service
 - Swale
 - 3:1 / 33% Slope
 - TWSI

PROPERTY OWNER
ZENA Investment Corporation
1200 Baseline Road Ottawa K2C 0A6

GJA INC.
GINO J. AIELLO | LANDSCAPE ARCHITECT
GJALA.COM | 613 286 5130 | GINO@GJALA.COM
110 DOWRY ROAD UNIT #11 | OTTAWA ONTARIO | K1T 5C2

MYERS CARSTAR
100 NIPISSING COURT KANATA

Landscape Plan
L1
Scale: 1:250

D07-12-25-0152 PLAN NO 19402