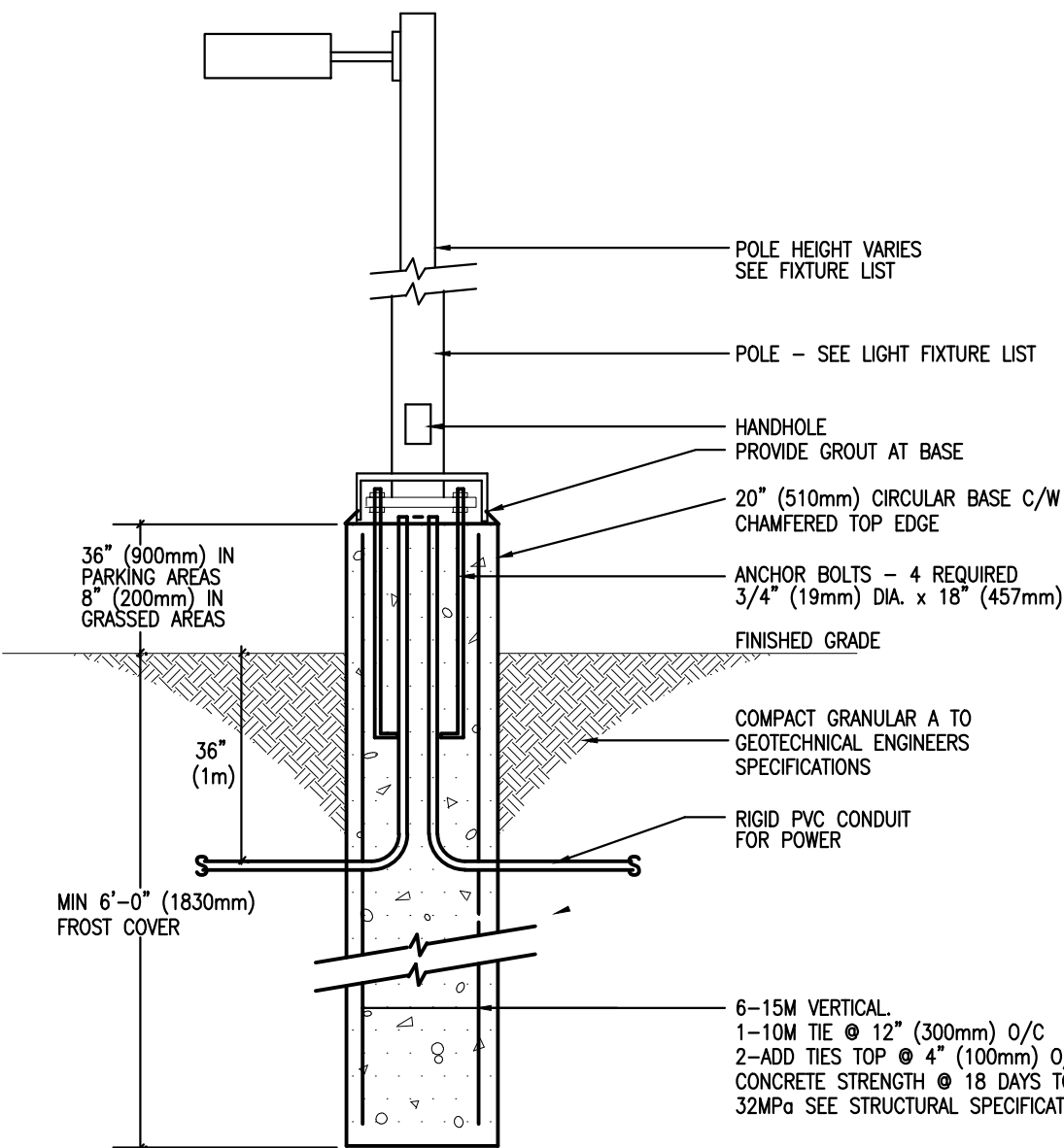


NOTES:

1. CSA C222 No. 211.1 APPLIES TO ALL PVC DUCTING.
2. ONLY MATERIAL APPROVED BY HYDRO TO BE USED.
3. DUCT JOINTS TO BE GLUED USING AN APPROVED "PVC" SOLVENT, WHEN APPLICABLE.
4. REINFORCING RODS FULL LENGTH OF CONCRETE ENCASED DUCTS. OVERLAP JOINTS AND TIE AT BOTH ENDS. DRILL AND DOWEL RODS TO CONCRETE STRUCTURE.
5. DUCT SPACERS TO BE PLACED AT A MAXIMUM OF 1500mm AND WITHIN 150mm OF COUPLING. PLASTIC DUCT SPACERS TO BE USED ONLY IF CONCRETE DUCT SPACERS ARE UNAVAILABLE.
6. FORMS REQUIRED FOR FULL LENGTH OF CONCRETE ENCASED DUCT STRUCTURE.
7. DUCTS AND TRENCHES MUST BE INSPECTED BY HYDRO BEFORE ANY CONCRETE IS POURED.
8. ALL UNDERGROUND UTILITIES MUST BE CONTACTED AND ALL NECESSARY PERMITS MUST BE OBTAINED BY OWNER OR CONTRACTOR.
9. CONTRACTOR MUST ENSURE THAT ALL DUCTS ARE CLEANED, RODDED AND THAT A 6mm (1/4") POLYPROPYLENE ROPE IS LEFT IN EACH DUCT.

1  
E14B TYPICAL DUCT BANK DETAIL  
N.T.S.



2  
E14B BASE DETAIL FOR EXTERIOR LIGHT STANDARD  
N.T.S.



INFRASTRUCTURE SERVICES & COMMUNITY SUSTAINABILITY /  
SERVICES D'INFRASTRUCTURE ET VIABILITÉ DES COLLECTIVITÉS  
INFRASTRUCTURE SERVICES BRANCH /  
DIRECTION D'INFRASTRUCTURE  
DESIGN AND CONSTRUCTION DIVISION /  
DIVISION DE LA CONCEPTION ET DE LA CONSTRUCTION  
DEPUTY CITY MANAGER / DIRECTEUR DES SERVICES MUNICIPAUX  
DIRECTOR / DIRECTEUR  
MANAGER / GESTIONNAIRE

FOR / POUR



1688 Woodward Dr.  
Ottawa Ontario  
Canada K2C 3R8

613 727-5111 Voice  
613 727-5115 Fax  
www.gwal.com Web

KEY PLAN

2	RE-ISSUED FOR SITE PLAN APPROVAL	2025-01-23	
1	ISSUED FOR SITE PLAN APPROVAL	2025-11-06	
0	ISSUED FOR BUILDING PERMIT	2025-03-21	
-	ISSUED FOR 90% REVIEW	2025-01-17	
-	ISSUED FOR 60% REVIEW	2024-10-17	
-	ISSUED FOR 33% REVIEW	2024-05-22	
NUMBER / NUMERO	DATE / DATE	(Y/M/D) (AN/D)	INITIALS INITIALES

DESIGNED BY / CONCU PAR A.GIRARD	CHECKED BY / VERIFIE PAR R.BOIVIN
DRAWN BY / DESSINE PAR R. GAYWALA	SCALE AS NOTED

DETAIL NUMBER 1 A1.1 SHEET NUMBER	PROJECT NORTH 
--	-------------------

THIS DRAWING IS THE PROPERTY OF THE CITY OF OTTAWA AND ALL DIMENSIONS ON DRAWING ARE FOR ESTIMATING PURPOSES ONLY. IT IS THE RESPONSIBILITY OF EACH CONTRACTOR AND SUB-CONTRACTOR OR CONSULTANT TO CHECK AND VERIFY ALL DIMENSIONS AND CONDITIONS ON SITE. NOTIFY OWNER OF ANY ERRORS OR OMISSIONS PRIOR TO COMMENCING THE WORK. DO NOT SCALE THE DRAWINGS.

CE DESSIN CONSTITUE LA PROPRIÉTÉ DE LA VILLE D'OTTAWA ET TOUT DROIT D'AUTEUR EST RÉSERVÉ. LES DIMENSIONS UTILISÉES LE SONT À DES FINS D'ESTIMATION SEULEMENT. IL INCOMBE À CHAQUE ENTREPRENEUR, SOUS-CONTRACTANT OU CONSULTANT DE VÉRIFIER TOUTES LES DIMENSIONS ET LES CONDITIONS SUR LE CHANTIER. VEUILLEZ INFORMER LE PROPRIÉTAIRE DE TOUTE ERREUR OU OMISSION AVANT D'ENTAMER LES TRAVAUX. NE DRESSEZ PAS LES PLANS À L'ÉCHELLE.

ARCHITECT / ARCHITECTE	CONSULTANT / EXPERT-CONSEIL
CONSULTANT / EXPERT-CONSEIL	CONSULTANT / EXPERT-CONSEIL

PROJECT / LOCATION / PROJET / ENDROIT  
2785 8TH LINE RD. - LARRY ROBINSON  
ARENA (METCALFE COMMUNITY CENTRE)  
EXPANSION

DRAWING / DESSIN  
ELECTRICAL DETAILS

BUSINESS ENTITY / NUMERO DE L'ENTITE BUILDING NUMBER / NUMERO DU BATIMENT	SHEET NO. / FEUILLE No. E14B
PROJECT NO. / NUMERO DE PROJET 2023-696	