

M:\2024\124147\CAD\Landscaping\124147.L.dwg, L1, Nov 04, 2025 - 5:20pm, mlaet

NOTE:
THE POSITION OF ALL POLE LINES, CONDUITS, WATERMANS, SEWERS AND OTHER UNDERGROUND AND OVERGROUND UTILITIES AND STRUCTURES IS NOT NECESSARILY SHOWN ON THE CONTRACT DRAWINGS, AND WHERE SHOWN, THE ACCURACY OF THE POSITION OF SUCH UTILITIES AND STRUCTURES IS NOT GUARANTEED. BEFORE STARTING WORK, DETERMINE THE EXACT LOCATION OF ALL SUCH UTILITIES AND STRUCTURES AND ASSUME ALL LIABILITY FOR DAMAGE TO THEM.

DISCLAIMER:
The elements on this plan illustrate the design intent and general constructibility of the proposed landscape which will support the associated development.
This is to demonstrate how the canopy cover, urban design, health, and climate change objectives of the Official Plan will be met through tree planting and site design.
This drawing is for City review only and is not intended for construction. Final detailed design and construction documentation is to be provided with certified 'Issued for Construction' drawings and specifications prior to construction.



18A BENTLEY AVE
OTTAWA, ON, K2E 6T8

PLANT LIST

KEY	QTY	BOTANICAL NAME	COMMON NAME	SIZE	COND	SPACING
Deciduous Trees						
ARF	10	<i>Acer rubrum</i> 'Autumn Flame'	Autumn Flame Red Maple	50mm Cal	WB	As Shown
AFCM	5	<i>Acer x freemanii</i> 'Celtzam'	Celebration Maple	50mm Cal	WB	As Shown
AFS	2	<i>Acer x freemanii</i> 'Sienna'	Sienna Glen Maple	50mm Cal	WB	As Shown
AXP	6	<i>Amelanchier x grandiflora</i> 'Princess Diana'	Princess Diana Serviceberry	50mm Cal	WB	As Shown
CEL	3	<i>Celtis occidentalis</i>	Hackberry	50mm Cal	WB	As Shown
CLU	2	<i>Gladiolus kentukea</i> (formerly 'lutea')	Yellowwood	50mm Cal	WB	As Shown
CCO	3	<i>Corylus columba</i>	Turkish Hazelnut	50mm Cal	WB	As Shown
GBG	18	<i>Ginkgo biloba</i> 'Gold Spire' (BLAGON)	Gold Spire Maidenhair Tree	150cm Ht	PT	As Shown
GBP	9	<i>Ginkgo biloba</i> 'Princeton Sentry'	Princeton Sentry Ginkgo	50mm Cal	WB	As Shown
GTD	6	<i>Gleditsia triacanthos</i> 'Draves'	Street Keeper Locust	50mm Cal	WB	As Shown
GTV	4	<i>Gleditsia triacanthos</i> 'Harve'	Northern Acclaim Locust	50mm Cal	WB	As Shown
LTE	2	<i>Liriodendron tulipifera</i> 'Emerald City'	Emerald City	50mm Cal	WB	As Shown
PTE	7	<i>Platanus x acerifolia</i> 'Exclamation'	Exclamation! Planetree	50mm Cal	WB	As Shown
QM	1	<i>Quercus macrocarpa</i>	Burr Oak	50mm Cal	WB	As Shown
UNH	11	<i>Ulmus japonica x pumila</i> 'New Horizon'	New Horizon Elm	50mm Cal	WB	As Shown
VL	6	<i>Viburnum lentago</i>	Nannyberry	50mm Cal	WB	As Shown

SCALE

1:400

0 4 8 12 16

DESIGN

MEL

CHECKED

SC

DRAWN

MEL

CHECKED

SC

APPROVED

SC

FOR REVIEW ONLY



NOVATECH

Engineers, Planners & Landscape Architects
Suite 200, 240 Michael Cowpland Drive
Ottawa, Ontario, Canada K2M 1P6

Telephone (613) 254-9643
Facsimile (613) 254-5867
Website www.novatech-eng.com

LOCATION
CITY OF OTTAWA
3400 WOODROFFE AVENUE

DRAWING NAME

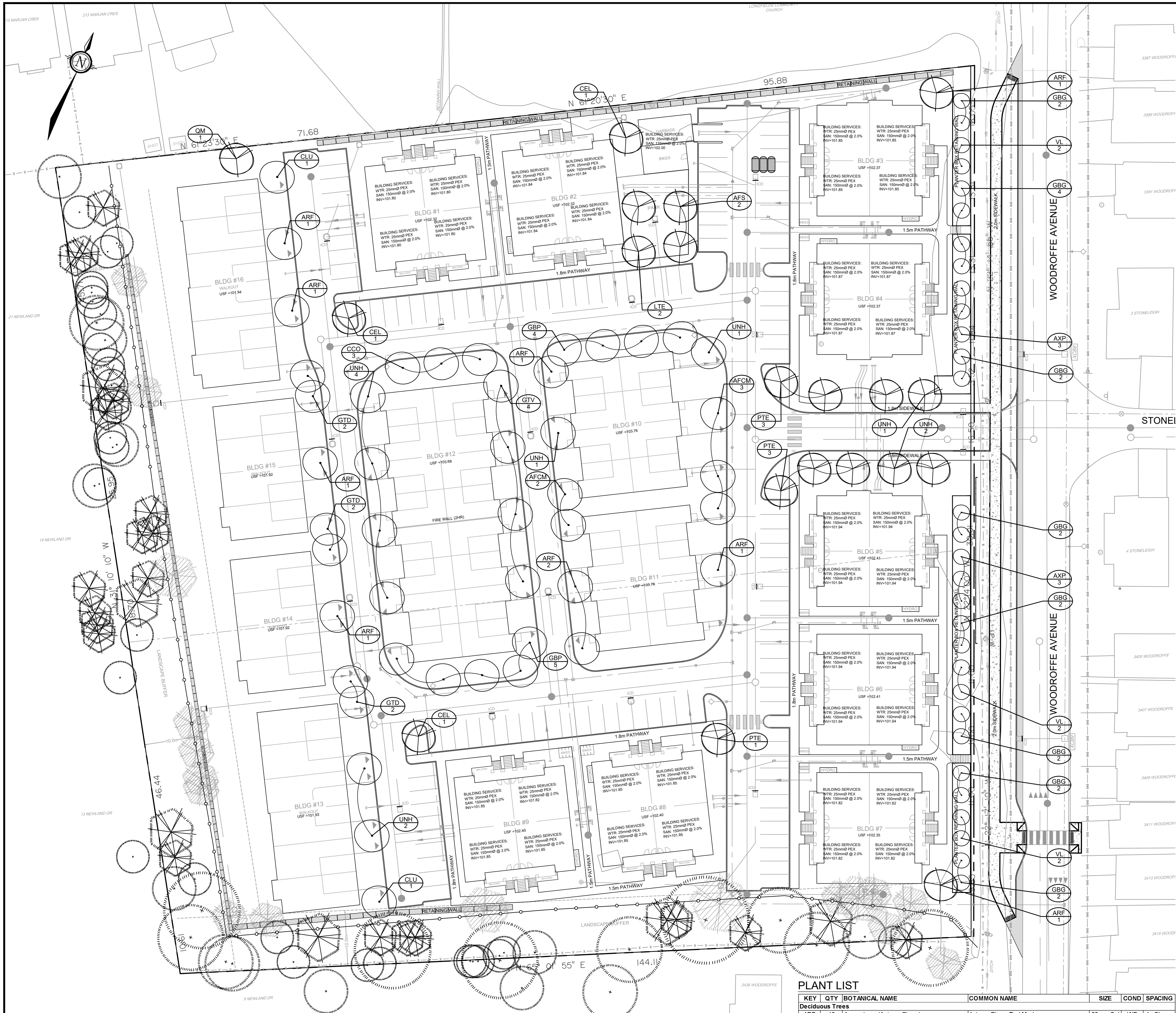
LANDSCAPE PLAN

PROJECT No.
124147-00

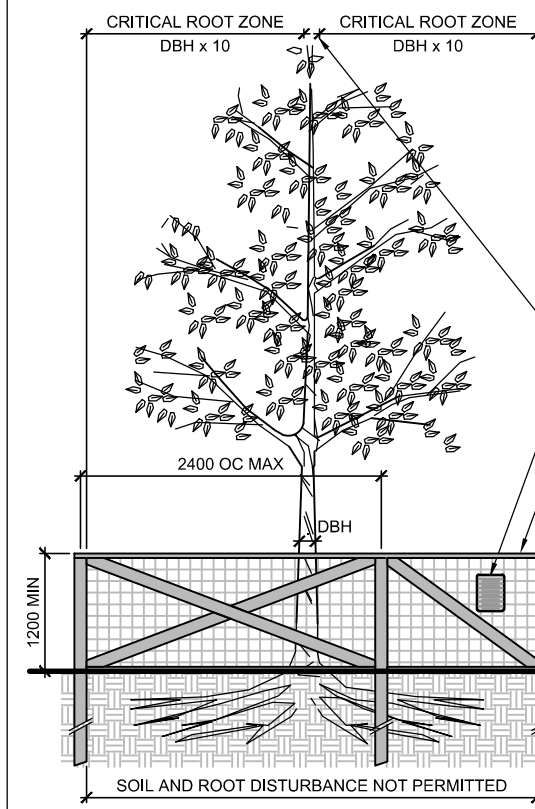
REV
REV # 2

DRAWING No.
124147-L

PLANNED BY: B. M. M. M. M.

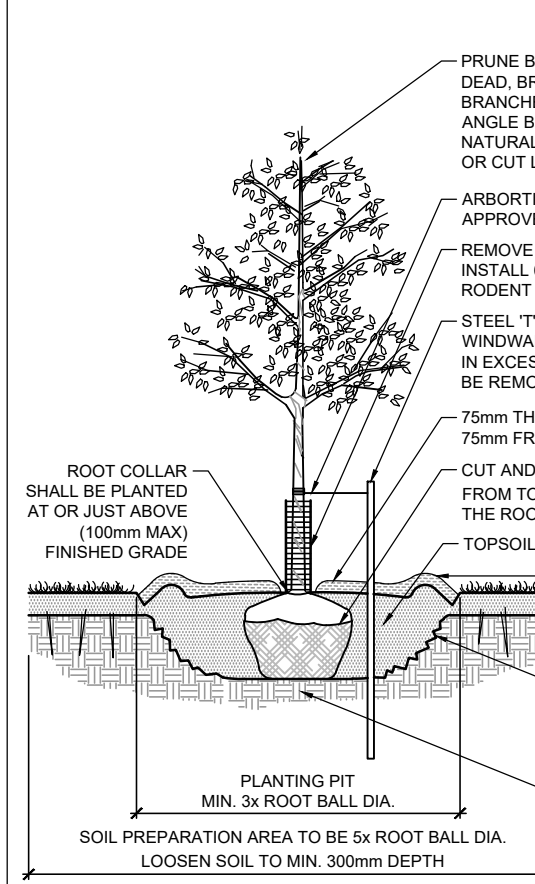


RELATED BY-LAWS
- TREE PROTECTION BY-LAW (No. 2020-340)



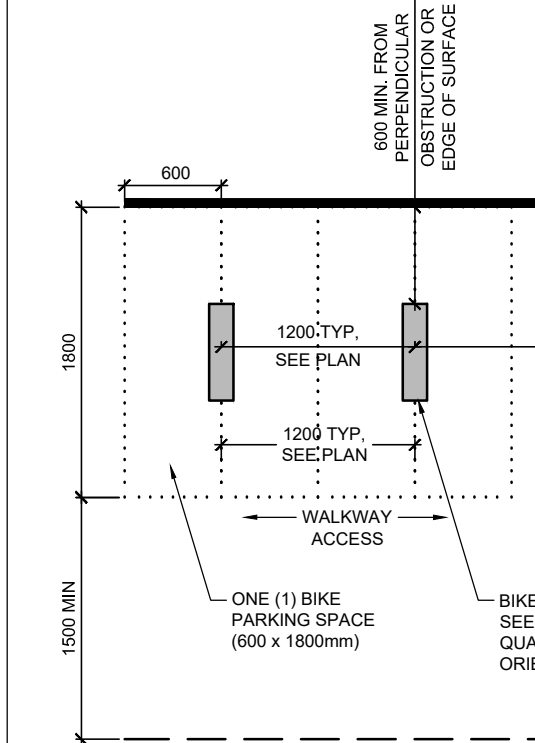
TREE PROTECTION FENCE

D1



STANDARD DECIDUOUS TREE PLANTING

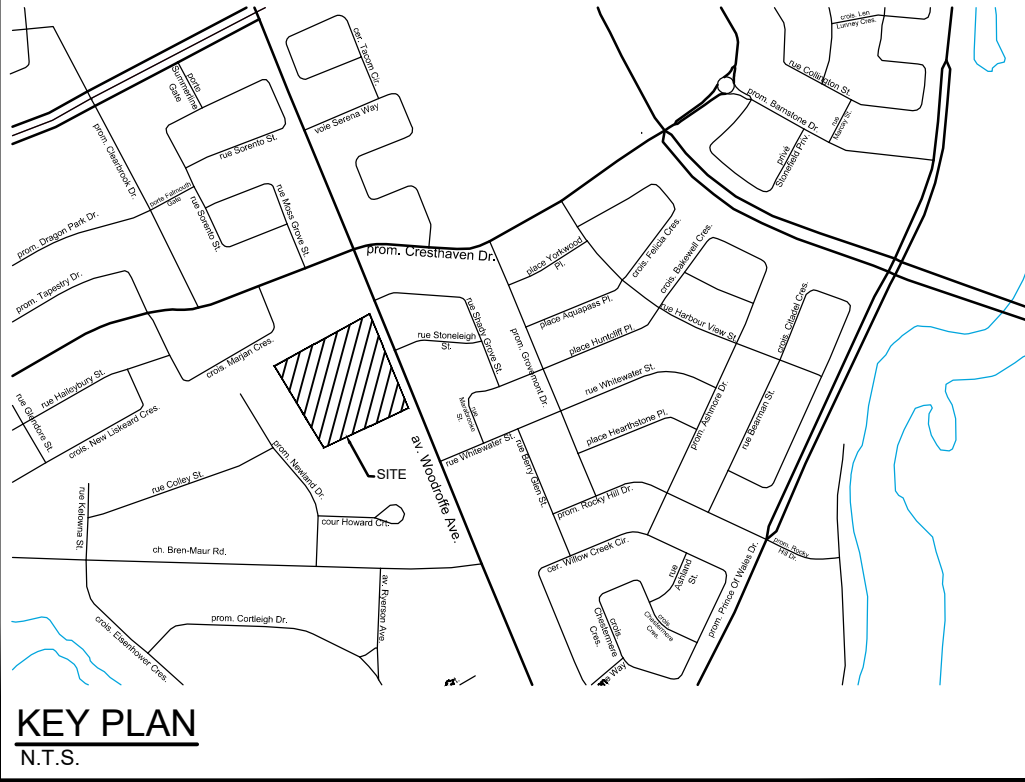
D2



NOTE:
1. FASTEN ALL SITE FURNISHINGS TO SURFACE WITH STAINLESS STEEL ANTI-VANDAL ANCHORS.

BIKE LAYOUT

D3



KEY PLAN
N.T.S.

LEGEND

- PROPERTY LIMIT
- PROPOSED DECIDUOUS TREE
- EXISTING TREE TO REMAIN
- EXISTING TREE TO REMOVE
- TREE PROTECTION FENCE
- SPECIES (SEE PLANT LIST)
- QUANTITY
- PROPOSED CHAINLINK FENCE 1.5m HT

GENERAL

- Read and interpret this drawing/ drawing set in conjunction with all the contract details and specifications, including related civil, utility, structural, architectural, mechanical, electrical, environmental, geotechnical, and survey information.
- The Contractor is to determine the exact location, size, material, and elevation of all existing utilities prior to commencing construction. Protect and assume responsibility for all existing utilities regardless of being shown on the drawings.
- It is essential to use the plans and details in conjunction with the specifications and notes.
- Do not scale drawings. Work to dimensions only.
- Protect all existing and retained vegetation for the duration of construction according to the contract details and specifications.
- Reinstate all areas and items damaged or disturbed, beyond the Limit of Work, because of construction activities, including but not limited to construction staging areas, haul roads, stockpile areas, etc. to the satisfaction of the Consultant. Unless otherwise noted, Contractor is to reinstate all areas to pre-construction condition or better to the satisfaction of the Contract Administrator.

PLANTING

- Plant material to be No. 1 Grade and is to comply with Canadian Standards for Nursery Stock (latest edition) published by the Canadian Nursery Landscape Association. Use structurally sound plant material with strong fibrous root system free of disease, defects, and injuries. Use trees with straight trunks, well and characteristically branched for species. Obtain approval from consultant of plant material at source prior to digging. All trees and shrubs to be container grown, potted, W/B or B/B, as indicated on Plant List. Bare root plants are only acceptable for certain species and as approved by the Landscape Architect.
- Plant material substitutions are not to be permitted without the written approval from the Consultant, with 48 hours notice, prior to shipping plant material.
- Plant locations are schematic / approximate only. Contractor is to stake out locations on site for approval by the Landscape Architect prior to installation.
- The illustrated number of plants shown in the Planting Plan supersedes the estimated number in the Plant List. Contractor to report any discrepancies to the Landscape Architect prior to installation. Contractor will assume full responsibility if the Landscape Architect is not notified.
- Ensure trees are thoroughly watered following planting. Monitor material and ensure adequate moisture until acceptance.
- In heavy clay or poorly drained soils, set root ball with root collar 75-100mm higher than finished grade.
- Approved topsoil depths are as follows:
 - Plant Beds - 450mm continuous depth. Applies to shrubs, perennials, vines, and groundcovers.
 - Sod/ Seed Areas - 100mm depth.
 - Reforestation - 300mm depth.
- Sod to be No. 1 Kentucky Bluegrass Sod grown from minimum mixture of 3 Kentucky Bluegrass cultivars. Quality and source are to comply with Canadian Standards for Nursery Stock, Section 17, (latest edition) published by the Canadian Nursery Landscape Nursery Landscape Association.
- Apply the following mineral fertilizer unless soil tests show other requirements:
 - Plant Beds - (8-32-16), i.e. 8% Nitrogen, 32% Phosphorus, 16% Potash per manufacturer specifications.
 - Sod Areas - (8-32-16), i.e. 8% Nitrogen, 32% Phosphorus, 16% Potash at a rate of 350kg/ha.
- Where applicable, for any plant areas with a mix of species/ cultivars notes, Contractor is to cluster like plants in groups of 3-5 and evenly distribute these in the noted area.