

	PROPOSED BUILDING AREA		RESERVED
	LANDSCAPED AREA		EXISTING FIRE HYDRANT
	NEW CONCRETE/ SIDEWALK		EXISTING HYDRO POLE
	EXISTING LANDSCAPING		
	CURB		
	DEPRESSED CURB		
	PROPOSED TREE/VEGETATION (REFER TO LANDSCAPE LEGEND FOR SPEC)		
	INTERIOR LOADING BAY		
	CATCH BASIN, REFER TO CIVIL DWGS		PRINCIPAL ENTRANCE
	ENTRANCE/ EXIT LOCATION		BARRIER FREE PARKING SIGN SEE DRAWING A1.02
	TRANSFORMER		FIRE ROUTE ACCESS / NO PARKING SIGN, SEE DRAWING A1.02
	RESERVED		NO PARKING SIGN (IN FRONT OF GARBAGE)
	MAN HOLE COVER, REFER TO CIVIL DWGS FOR LOCATIONS		
	RESERVED		
	RESERVED		

MC (2288) S349-H "MIXED-USE CENTER ZONE"

LEGAL DESCRIPTION OF PROPERTY:

<u>ZONING MECHANISM</u>	<u>EXISTING</u>	<u>REQUIRED</u>	<u>PROPOSED</u>
Minimum Lot Area	3507m2 (0.35 ha)	NO MIN.	3,507m2 (0.35 ha)
Building Area	458m2		243.98m2
Minimum Lot Width	50.227m	NO MIN.	50.227m (NO CHANGE)
Minimum Front Yard Setback	18.154m	2.00m	18.154m (NO CHANGE)
Minimum Exterior Side Yard Setback	1.748m	2.00m	11.102m
Minimum Interior Side Yard Setback	20.434m	2.00m	20.434m (NO CHANGE)
Minimum Rear Yard Setback	46.265m	2.00m	46.265m (NO CHANGE)
Maximum Floor Space Index	13.05%	NO MAX	6.92%
Maximum Building Height	4.038m	11m (Permitted)	6.700m
Minimum Landscape Setbacks	TO REMAIN	NO MIN.	TO REMAIN
Parking	30	0	13

1	PROVIDE NEW OUTDOOR DIGITAL MENUBOARD WITH INTEGRATED SPEAKER SUPPLIED BY TDL. INSTALLED BY TDL APPROVED INSTALLER. LL'S G.C. TO PROVIDE CONCRETE BASE. INSTALL ELECTRICAL CONDUITS AND PULL STRINGS PER MANUFACTURER'S SPECIFICATIONS. TENANT'S GC TO INSTALL ASSOCIATED ELECTRICAL WIRINGS. REFER TO SITE DETAILS 3/AO.2, 5/AO.2 & ELECTRICAL DWGS.
2	NEW DIRECTIONAL, SIGN POSTS AND SIGN BOX C/W NEW FACE INSERTS SUPPLIED AND INSTALLED BY SIGNAGE SUPPLIER. LL'S G.C. TO PROVIDE CONCRETE BASE. INSTALL ELECTRICAL CONDUITS AND PULL STRINGS PER MANUFACTURER'S INSTRUCTIONS. REFER TO SITE DETAIL 10/AO.2.
3	NEW TENANT'S SIGN, SIDEWALK C/W EXPANSION JOINT BY LL'S G.C. COORDINATE SCOPE WITH TENANT AS REQUIRED. SEE SITE DETAILS 7/AO.2.
4	BOLLARDS AND CONCRETE BASES BY LL'S G.C. TENANT GC TO INSTALL BOLLARD COVERS SUPPLIED BY TDL. REFER TO SITE DETAILS 19/AO.2 AND 10/AO.3.
5	RESERVED
6	PROVIDE AND INSTALL PATIO RAILING. SUPPLIED BY TDL. INSTALLED BY LL'S G.C. SEE SITE DETAILS 11/AO.2.
7	BARRIER-FREE CURB RAMP WITH DEPRESSED CURB BY LL'S G.C. REFER TO SITE DETAIL 16/O.2
8	RESERVED
9	RESERVED
10	PROVIDE NEW DIGITAL PRE-SELL MENUBOARD SUPPLIED BY TDL. INSTALLED BY TDL APPROVED INSTALLER. LL'S G.C. TO PROVIDE CONCRETE BASE. INSTALL ELECTRICAL CONDUITS AND PULL STRINGS PER MANUFACTURER'S SPECIFICATIONS. TENANT'S GC TO INSTALL ASSOCIATED ELECTRICAL WIRINGS. REFER TO SITE DETAILS 2/AO.2, 4/AO.2 & 6/AO.2 FOR PRE-SELL SCREEN AND ELECTRICAL DWGS.
11	LANDSCAPED AREA BY LL'S G.C..
12	EXISTING LANDSCAPED AREA.
13	NEW DRIVE-THRU ARROW GRAPHIC PAVEMENT MARKING AT DRIVE-THRU LANE ENTRANCE & EXIT. STENCIL SUPPLIED BY TDL. INSTALLED BY TENANTS G.C. LEAVE STENCIL WITH TENANT FOR FUTURE MAINTENANCE. REFER TO SITE DETAIL 15/AO.2.
14	NEW "DRIVE-THRU" GRAPHIC PAVEMENT MARKING AT ENTRANCE OF DRIVE-THRU. STENCIL SUPPLIED BY TDL. PAINTED BY TENANTS G.C. LEAVE STENCIL WITH RO FOR FUTURE MAINTENANCE. REFER TO DETAIL 14/AO.2
15	PAINTED BY LL'S G.C. TENANT'S SIGNAGE SUPPLIER TO PROVIDE AND INSTALL TIM HORTONS FACE INSERT. S.S TO COORDINATE WITH AHJ FOR BYLAW REQUIREMENTS AND SIZE.
16	LL'S G.C. TO PAINT DIRECTIONAL ARROWS AT STREET ENTRANCES AND EXITS, DRIVE-THRU LANES, AND PARKING LOT TO GUIDE TRAFFIC FLOW. ALL ARROWS TO BE PAINTED WHITE.
17	NEW CONCRETE PATIO AREA BY LL'S G.C. REFER TO CIVIL DRAWINGS APPROVED SITE PLAN
18	DRIVE-THRU WINDOW C/W BOLLARDS AND CONCRETE PADS BY LL'S G.C.
19	MOLK GARGER ENCLOSURE PER PAD STANDARD BY LL'S GC. REFER TO CIVIL ENGINEERS SIGNAGE SITE PLAN DWGS
20	LL'S G.C. TO PROVIDE CONCRETE PAD C/W PREFAB MAGNETIC LOOP AT DRIVE-THRU ORDER STATION AND DRIVE-THRU WINDOW. REFER TO SITE DETAILS 6/AO.3 & 7/AO.3.
21	REFER TO CIVIL SITE PLAN DWGS FOR ALL SITE WORK, PARKING SIGNAGE AND PAINTING AND MARKINGS, CURB LOCATIONS AND GRADE DETAILS, AND LANDSCAPE LOCATIONS. ALL BY LL'S G.C.
22	RESERVED
23	RESERVED
24	LL'S G.C. TO PROVIDE CONCRETE CURB AND RAISED ISLAND AND LONG DRIVE-THRU LANE AS SHOWN. G.C. TO REFER TO TDL DIMENSIONS AND OPERATIONAL STANDARDS. REFER TO CIVIL ENGINEERS APPROVED SITE PLAN APPLICATION DWGS. REFER TO SITE DETAILS 5/AO.3, 8/AO.3 & 9/AO.3.
25	GAS METER LOCATION. LL'S G.C. TO INSTALL BOLLARDS ON EACH SIDE OF GAS METER.
26	RESERVED
27	SIGNAGE AT BARRIER-FREE PARKING SPACES SUPPLIED AND INSTALLED BY LL'S G.C.. SIGNAGE SUBJECT TO AHJ APPROVAL. LL'S G.C. TO COORDINATE WITH AHJ BEFORE PURCHASING AND INSTALLATION. REFER TO DETAIL 11/AO.3

[illegible]

This drawing is owned by or licensed for use by Tim Hortons (or its affiliated or related companies) and may not be reproduced, used, downloaded, disseminated, published, or transferred in any form or by any means, except with the prior written consent of Tim Hortons. Copyright infringement is a violation of federal law subject to criminal and civil penalties.

The Contractor is to verify all dimensions and conditions on the project and to report any discrepancies to the Tim Hortons Representative prior to commencing work. These drawings are not to be used for construction purposes unless indicated by Tim Hortons as "issued for construction".



nicholas**caragianis**architect inc.

137 Pamilla Street, Ottawa ON K1S 3K9
t: 613 237 6801 f: 613 237 8289 ncarchitect.ca

PROJET / PROJECT

Tim Hortons.

STORE TYPE

LOCATION

2300 BANK STREET,
OTTAWA
ONTARIO

DRAWING TITLE

SITE PLAN

DRAWN BY

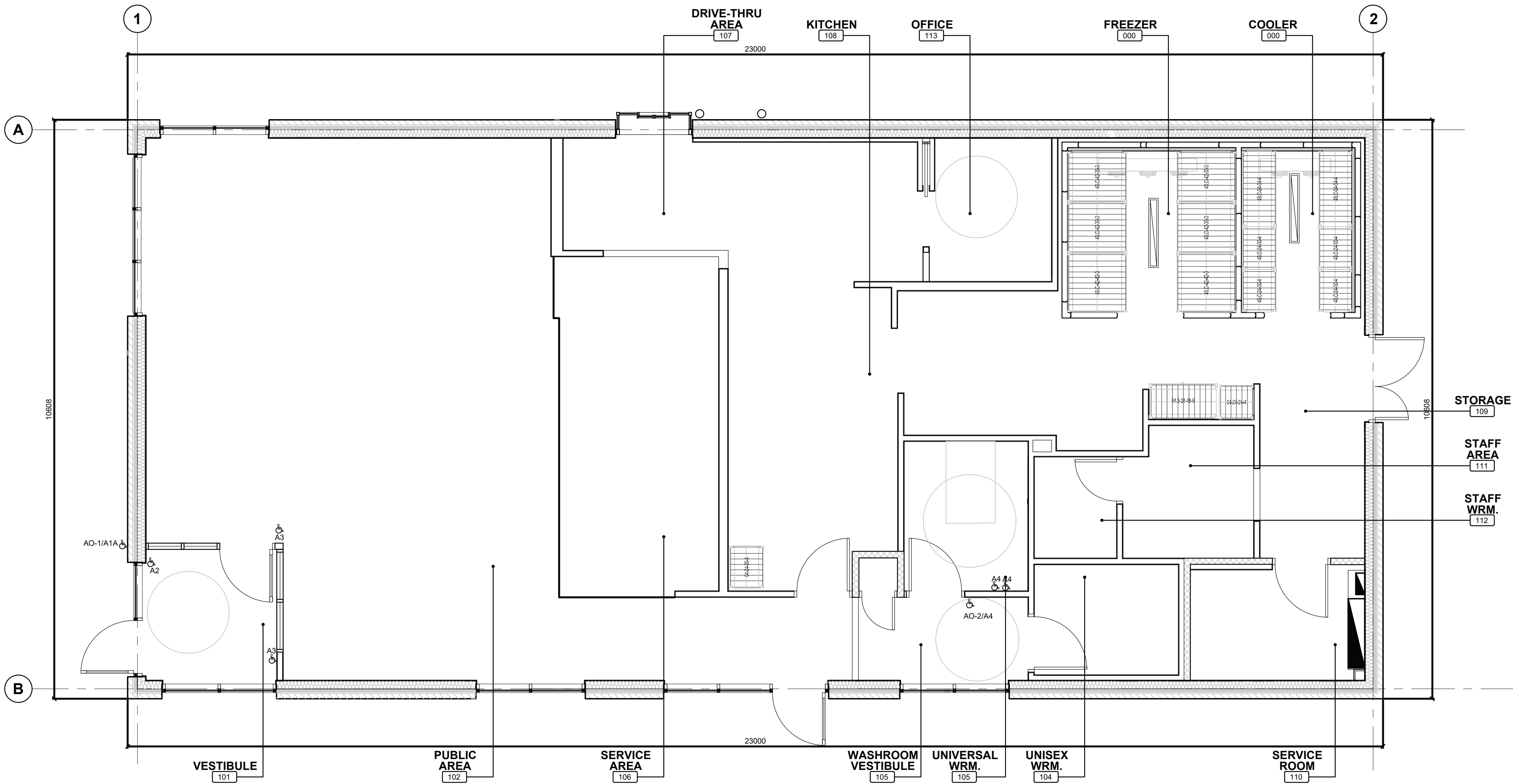
CHECKED

SCALE

DATE _____

PROJECT NC

DRAWING NO.



1 GROUND FLOOR PLAN
SCALE: 1:50

ISSUE TABLE		
NO.	DATE YYYY-MM-DD	DESCRIPTION
01	2025-09-12	INITIAL SK1 FOR REVIEW
02	2025-09-22	INITIAL SK2 FOR REVIEW
03	2025-09-24	INITIAL SK3 FOR REVIEW
04	2025-09-25	PRE-CON SUBMISSION
05	2025-10-20	INITIAL SK5 FOR REVIEW
REVISIONS		
NO.	DATE YYYY-MM-DD	DESCRIPTION
06	2025-10-29	INITIAL SK6 FOR REVIEW
07	2025-11-19	SITE PLAN UPDATED FOR REVIEW
08	2025-12-17	SITE PLAN APPLICATION

This drawing is owned by or licensed for use by Tim Hortons (or its affiliated or related companies) and may not be reproduced, used, downloaded, disseminated, published, or transferred in any form or by any means, except with the prior written consent of Tim Hortons. Copyright infringement is a violation of federal law subject to criminal and civil penalties.

The Contractor is to verify all dimensions and conditions on the project and to report any discrepancies to the Tim Hortons Representative prior to commencing work. These drawings are not to be used for construction purposes unless indicated by Tim Hortons as "issued for construction".



TRUE NORTH



PROJECT NORTH



nicholas**caragianis**architect inc.



137 Pamilla Street, Ottawa ON K1S 3K9
t: 613 237 6801 f: 613 237 8989 ncarchitect.ca

PROJET / PROJECT

Tim Hortons

STORE TYPE

LOCATION

2300 BANK STREET,
OTTAWA
ONTARIO

DRAWING TITLE

FLOOR PLAN

DRAWN BY	CHECKED
SH	CC
SCALE	DATE
1:50	SEPT 2025
PROJECT NO.	DRAWING NO.
122191	A1.0

ROOF PLAN NOTES

- 1

LOCATION OF EXISTING ROOF LADDER.
- 2

LINE OF PARAPET.
- 3

LINE OF WALL BELOW
- 4

WHITE ULTRAPLY TPO MEMBRANE BY FIRESTONE. REFER TO ROOF TYPE SCHEDULE & SPECIFICATIONS.
- 5

LOCATION OF EXISTING OVERFLOW SCUPPER.
- 6

EXISTING ROOF DRAIN. REFER TO MECHANICAL.
- 7

H V A C UNITS AND EXHAUST FANS BY LANDLORD AS PER MECHANICAL DRAWINGS. PROVIDE CURB WHERE REQUIRED. REFER TO DETAIL 2/A4.0.
- 8

EXISTING METAL CAP FLASHING TO REMAIN.
- 9

LINE OF EXISTING HIGH PARAPET WALL BY LL. REFER TO STRUCTURAL AND DETAIL ON SHEET A7.2.
- 10

PROVIDE SLEEPERS FOR WALK-IN COOLER/FREEZER CONDENSER. SLEEPERS TO SPAN ACROSS JOISTS BELOW. REFER TO DETAIL 2/A4.0. ROOF OPENING, CURBS, WATERPROOFING BY LL AS REQUIRED PER MANUFACTURER SPECIFICATIONS AND MECHANICAL DRAWINGS. CONDENSING LINE BY GC. TO BE COORDINATED WITH MANUFACTURER (NORBEC).
- 11

RESERVED
- 12

RESERVED
- 13

ROOF TOP MOUNTED ELECTRICAL TRANSFORMER AND CURBS BY LANDLORD. REFER TO ELECTRICAL DRAWINGS.
- 14

ROOF OPENING BY LANDLORD FOR ACCESS OF PIPES & WIRES.
- 15

EXISTING TPO WALK WAY PADS OR X-TREADS BY LL.
- 16

LANDLORD TO PROVIDE & INSTALL 3M NON-SLIP TAPE ON FLASHING AT LADDER LOCATION.
- 17

LL TO PROVIDE CRICKETS AT ALL HVAC UNITS AS REQUIRED TO PROVIDE POSITIVE DRAINAGE.
- 18

EXISTING WALL ENDS WRAPPED WITH BLACK METAL SIDING.
- 19

EXISTING TPO ROOF MEMBRANE ON BACK OF HIGH/LOW PAPRAPETS, REFER TO DETAIL 1/7.2
- 20

EXISTING TAPERED INSULATION.
- 21

EXISTING 305mm X 305mm PRE-FINISHED METAL VENTED LOUVER AT HIGH PARAPET BY LANDLORD.
- 22

EXISTING ROOFTOP SCREENING BY LANDLORD.
- 23

PRE-MANUFACTURED MESH-BOX BUMP-OUT TO BE SUPPLIED BY TDL AND INSTALLED BY GC. LANDLORD TO PROVIDE POWER AND BACKING PER LL'S P.ENG STAMPED STRUCTURAL DRAWINGS. REFER TO MANUFACTURER DRAWINGS FOR INSTALLATION DETAILS AND ELECTRICAL.
- 24

EXTERIOR C-CHANNEL LIGHT AROUND PERIMETER OF BUILDING SUPPLIED BY TDL & INSTALLED BY G.C. REFER TO ELECTRICAL DRAWINGS & EQUIPMENT PLAN ON SHEET A2.
- 25

LED STRIP LIGHTING AROUND PERIMETER OF OVERHANG. REFER TO ELECTRICAL DRAWINGS & ELEVATIONS FOR LOCATION.
- 26

RESERVED
- 27

EXISTING ROOF BY LL TO REMAIN. PATCH AND REPAIR AS REQUIRED. MAKE GOOD, WEATHERPROOF TO MATCH EXISTING.
- 28

RESERVED
- 29

PLUMBING VENT AS PER MECHANICAL DRAWINGS TO BE COORDINATED WITH LL. LL TO PROVIDE OPENING, WATERPROOFING, AND CURB AS REQUIRED.

SYMBOL LEGEND

- ⓐ

1

DETAIL NUMBER
DRAWING NUMBER
- 1

NOTE REFERENCE

GENERAL NOTES

ALL ROOFING TO BE IN STRICT ACCORDANCE WITH THE ONTARIO BUILDING CODE AND THE (C.R.C.A.) CANADIAN ROOFING CONTRACTORS ASSOCIATION ROOFING MANUAL.

G.C. IS RESPONSIBLE FOR ENSURING THAT ALL ROOF OPENING ARE SEALED DURING THE ENTIRE LENGTH OF CONSTRUCTION.

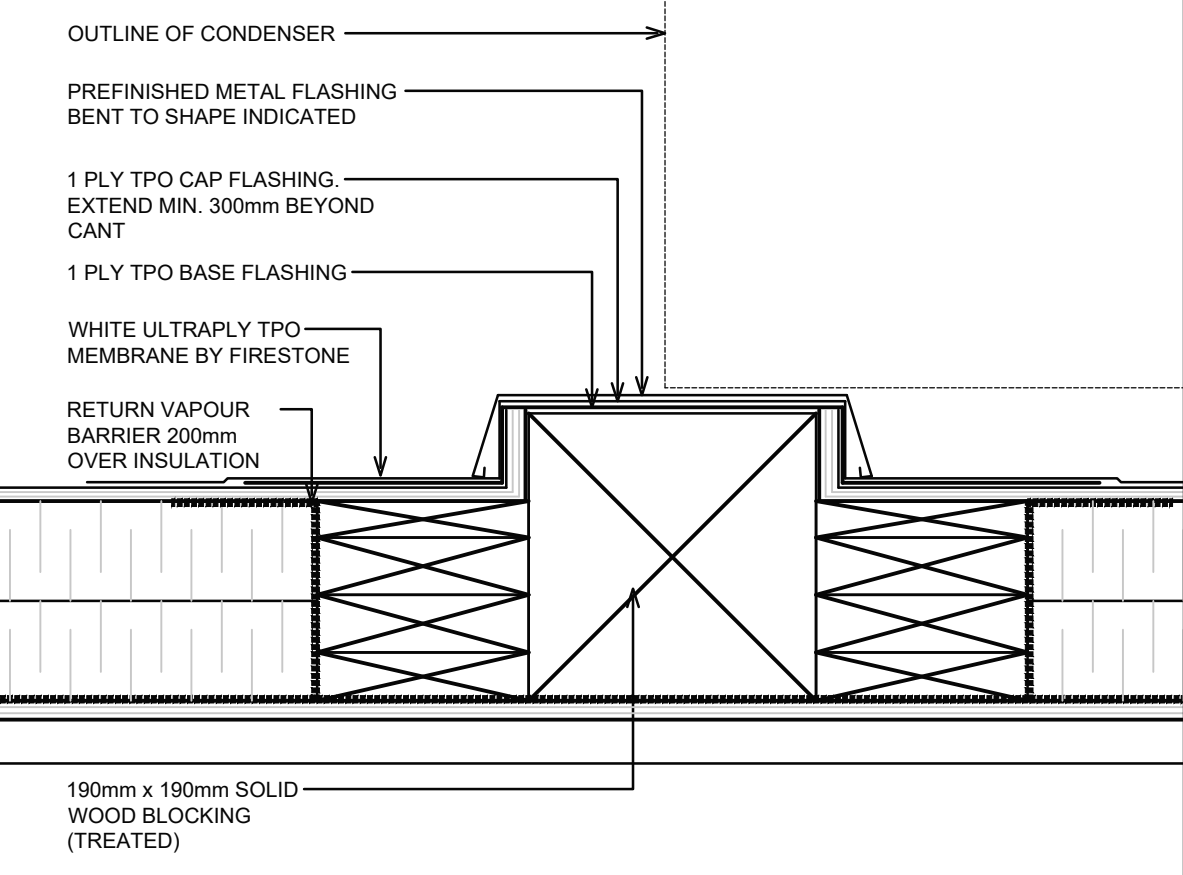
PROVIDE NEW AND MODIFIED ROOF OPENINGS FOR NEW EXHAUST HOODS AS REQUIRED. ALL ROOF OPENINGS, REINFORCEMENT, AND WATERPROOFING BY LL. REFER TO MECHANICAL DRAWINGS.

ALL ROOF DETAILS BY LL UNLESS NOTED OTHERWISE. ROOF ASSEMBLY BY MANUFACTURER & COMPLETE WITH MATERIAL AND LABOUR 5 YEAR WARRANTY. MANUFACTURERS TECHNICAL REPRESENTATIVE MUST MAKE A MINIMUM OF 3 SITE VISITS, ISSUE REPORTS & FINAL CERTIFICATE OF CONFORMITY FOR ROOF INSTALLS, PARAPETS, ROOF CURBS, VENT STACKS, ETC. ROOF SYSTEM MUST BE FULLY ADHERED, MECHANICALLY FASTENED & DESIGNED TO WITHSTAND WIND UPLIFT ALL AS PER MANUFACTURERS DESIGN RECOMMENDATIONS.

THIS DRAWING TO BE READ IN CONJUNCTION WITH MECHANICAL AND ELECTRICAL DRAWINGS.

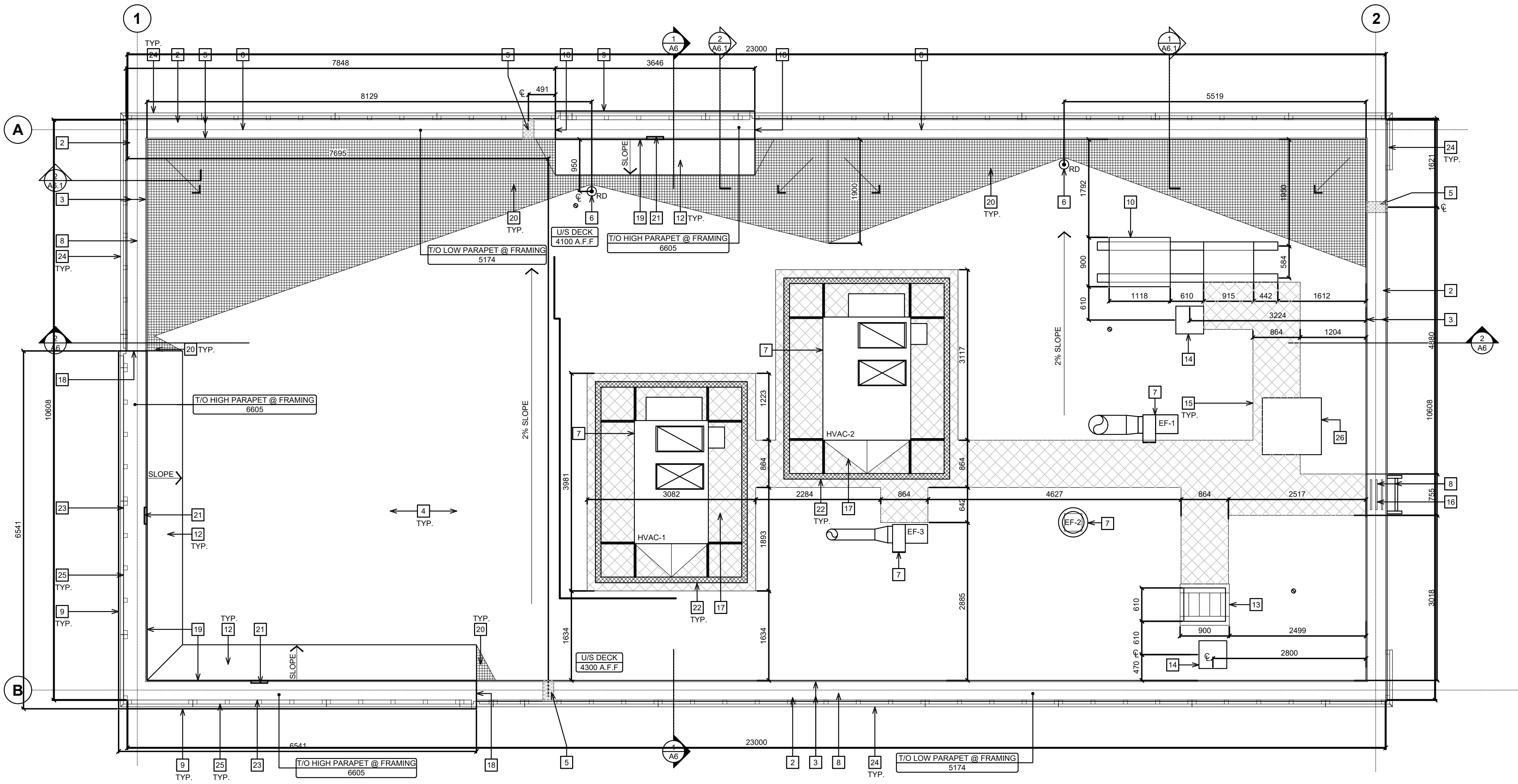
GENERAL NOTES

G.C. TO COORDINATE HEIGHT OF THE ROOF WITH LANDLORD. ENSURE ALL THE SUB-TRADES ARE MADE AWARE OF THE FINAL COORDINATED HEIGHT.



2 TYPICAL SLEEPER DETAIL

SCALE: 1:5



1 ROOF PLAN

SCALE: 1:50

ISSUE TABLE

NO.	DATE YYYY-MM-DD	DESCRIPTION
01	2025-09-12	INITIAL SK1 FOR REVIEW
02	2025-09-22	INITIAL SK2 FOR REVIEW
03	2025-09-24	INITIAL SK3 FOR REVIEW
04	2025-09-25	PRE-CON SUBMISSION
05	2025-10-20	INITIAL SK5 FOR REVIEW

REVISIONS

NO.	DATE YYYY-MM-DD	DESCRIPTION
06	2025-10-29	INITIAL SK6 FOR REVIEW
07	2025-11-19	SITE PLAN UPDATED FOR REVIEW
08	2025-12-17	SITE PLAN APPLICATION

This drawing is owned by or licensed for use by Tim Hortons (or its affiliated or related companies) and may not be reproduced, used, downloaded, disseminated, published, or transferred in any form or by any means, except with the prior written consent of Tim Hortons. Copyright infringement is a violation of federal law subject to criminal and civil penalties.

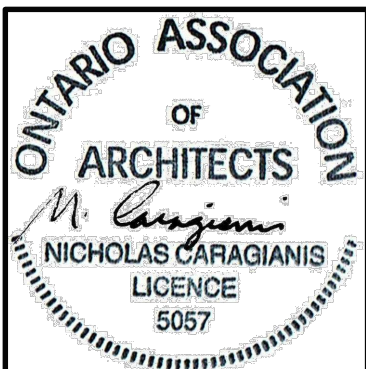
The Contractor is to verify all dimensions and conditions on the project and to report any discrepancies to the Tim Hortons Representative prior to commencing work. These drawings are not to be used for construction purposes unless indicated by Tim Hortons as "issued for construction".



TRUE NORTH



PROJECT NORTH



nicholascaragianisarchitect inc.



137 Pamilla Street, Ottawa ON K1S 3K9
t: 613 237 6801 f: 613 237 8289 ncarhitect.ca

PROJET / PROJECT

Tim Hortons

STORE TYPE

LOCATION

2300 BANK STREET,
OTTAWA
ONTARIO

DRAWING TITLE

ROOF PLAN
& DETAILS

DRAWN BY

SH

CHECKED

CC

SCALE

1:50

DATE

SEPT 2025

PROJECT NO.

122191

DRAWING NO.

A4.0



SYMBOL LEGEND

GENERAL NOTES

- MASONRY/MORTAR SPEC.**

- ## GENERAL NOTES

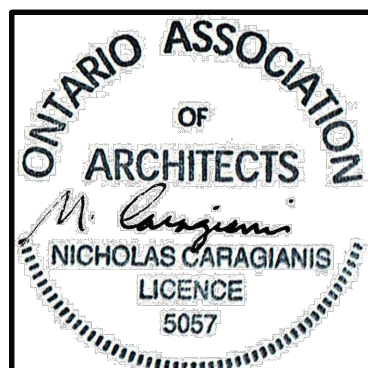
G.C. TO COORDINATE HEIGHT OF THE ROOF WITH LANDLORD. ENSURE ALL THE SUB-TRADES ARE MADE AWARE OF THE FINAL COORDINATED HEIGHT.

NOTE:

EXTERIOR ELEVATION NOTES

- | | |
|----|---|
| | EXISTING PREFINISHED METAL FLASHING. REFER TO EXTERIOR FINISH SCHEDULE. - BY LANDLORD |
| 2 | EXISTING BRICK. REFER TO EXTERIOR FINISH SCHEDULE. - BY LANDLORD |
| 3 | PANELS/ BUMP-OUT FEATURE (REFER TO EXTERIOR FINISH SCHEDULE) INCLUDING ALL MOUNTING HARDWARE/ HAT CHANNELS/ LIGHTING/ DRIVERS TO BE SUPPLIED BY TIM HORTONS AND INSTALLED BY GC. REFER TO SHEET S09 FOR MANUFACTURER INSTALLATION DETAILS. REFER TO ELECTRICAL DRAWINGS FOR JUNCTION BOX LOCATION. G.C TO SITE VERIFY DIMENSIONS WITH MONTREAL NEON. |
| 4 | EXISTING SOLDIER COURSE ACCENT BRICK - MODULAR SIZE. REFER TO EXTERIOR FINISH SCHEDULE. - BY LANDLORD |
| 5 | EXISTING ANODIZED ALUMINUM FRAMES. REFER TO WINDOW SCHEDULE ON SHEET A11. - BY LANDLORD |
| 6 | EXISTING EXPOSED FOUNDATION TO BE PARGED & FREE OF IMPERFECTIONS. - BY LANDLORD |
| 7 | EXISTING POURED CONCRETE FOUNDATION. - BY LANDLORD |
| | 1067mm (42") HIGH ILLUMINATED SIGN MOUNTED ON EXTERIOR WALL CLADDING BY SIGN COMPANY. G.C. TO ENSURE TO PROVIDE ADEQUATE WOOD BLOCKING/BACKING FOR SIGNAGE SUPPORT (COORDINATE WITH SIGN MANUFACTURER). G.C TO COORDINATE WITH SIGN MANUFACTURER AND SIGN INSTALLER FOR LOCATION OF FASTENERS. REFER TO ELECTRICAL DRAWINGS. - BY LANDLORD |
| 9 | ROOF ACCESS LADDER FOR EASTERN CANADA LOCATIONS. - BY LANDLORD |
| | EXISTING METAL PIPE RAILING. REFER TO DETAIL. - BY LANDLORD |
| 11 | 150mm DIA. METAL BOLLARD FILL W/ CONCRETE GC BOLLARD COVER. REFER TO DETAIL 5/A7.1. - BY LANDLORD |
| 12 | EXISTING DRIVE-THRU WINDOW WITH INSULATED PANEL. REFER TO DRIVE-THRU WINDOW SCHEDULE ON SHEET A11. - BY LANDLORD |
| 13 | RESERVED. |
| 14 | EXISTING OVERFLOW SCUPPER. REFER TO DETAIL- BY LANDLORD |
| 15 | EXISTING CONCRETE SIDEWALK (BY OTHERS). REFER TO SITE PLAN. - BY LANDLORD |
| 16 | EXISTING RECYCLING UNIT SUPPLIED BY TDL GROUP CORP. AS INSTALLED BY G.C. |
| 17 | BUMP-OUT FEATURE (COLOUR/MATTE BLACK) SUPPLIED BY TIM HORTONS GC PREFINISHED METAL FLASHING BY G.C. G.C. TO COORDINATE WITH MONTREAL NEON FOR INSTALLATION. REFER TO DETAILS MARKED ON EXTERIOR ELEVATIONS. |
| 18 | HWT CONCENTRIC VENT TO BE INSTALLED PRIOR TO EXT. CLADDING. EXACT LOCATION TO BE DETERMINED ON SITE. - BY LANDLORD |
| 19 | EXISTING LOCATION OF GAS METER. REFER TO MECHANICAL DRAWINGS. - BY LANDLORD |
| 20 | ANODIZED ALUMINUM (EXTERIOR STOREFRONT SWING DOORS). G.C TO INSTALL NEW 'HOCKEY STICK DOOR HANDLES' ON FULL SIDE (SUPPLIED BY TDL GROUP LTD). REFER TO WINDOW SCHEDULE ON SHEET A11. - BY LANDLORD |
| 21 | LOCATION OF REMOTE SUCTION FOR GREASE INTERCEPTOR. REFER TO MECHANICAL DRAWINGS. - BY LANDLORD |
| 22 | RESERVED. |
| 23 | RESERVED. |
| 24 | G.C. TO PROVIDE & INSTALL TWO (2) "NO-SMOKING WITHIN 7.5m" SIGNAGE AT ENTRIES/EXITS. CONFIRM SIZE, COLOUR & REQUIREMENTS AS PER SPECIFIC LOCAL CODES AND BYLAWS. |
| 25 | RESERVED. |
| | G.C. TO PROVIDE & INSTALL STAINLESS STEEL KICK PLATE (AT BOTTOM PANELS) ON BOTH SIDES FOR MAIN ENTRANCE DOORS, VESTIBULE DOORS & EXIT DOORS. REFER TO EXTERIOR FINISH SCHEDULE. - BY LANDLORD |
| 27 | COLUMN DOOR OPERATOR FOR BARRIER FREE DOORS (INSTALLED AT MIN. 150mm A.F.F. AND MAX 1100mm A.F.F.) REFER TO ELECTRICAL DRAWINGS AND DOORHARDWARE SCHEDULE ON SHEET A11. REFER TO DETAIL 3/A5 AND SHEETS A2. VERIFY WITH LOCAL CODE FOR PUSH BUTTON REQUIREMENTS. SUPPLIED AND INSTALLED BY LANDLORD. - BY LANDLORD |
| 28 | EXISTING RUNNING BOND ACCENT BRICK - MODULAR SIZE. REFER TO EXTERIOR FINISH SCHEDULE. - BY LANDLORD |
| 29 | EXISTING WALL PACK. REFER TO ELECTRICAL DRAWINGS. - BY LANDLORD |
| 30 | G.C TO PROVIDE CONCRETE CURB ALONG DRIVE-THRU LANE. CURB TO PROJECT 200mm FROM FACE OF EXTERIOR CLADDING AND LENGTH OF CURB IS EXTENT OF FEATURE WALL. - BY LANDLORD |
| 31 | EXTERIOR POP FRAMES (SUPPLIED AND INSTALLED BY OTHERS). GC TO ENSURE TO PROVIDE ADEQUATE WOOD BLOCKING IN WALL. - BY LANDLORD |
| 32 | EXISTING TOP ROOF MEMBRANE ON BACK OF PARAPET WALLS. REFER TO SPECIFICATIONS. - BY LANDLORD |
| 33 | RESERVED. |
| 34 | RESERVED. |
| 35 | EXISTING INSULATED METAL PANEL (COLOR BLACK ANODIZED). REFER TO WINDOW SCHEDULE ON SHEET A11. - BY LANDLORD |
| 36 | G.C TO PROVIDE CONTROL JOINT (AS PER MANUFACTURER SPECIFICATIONS) COMPLETE WITH BACKING ROD & SEALANT (SEALANT COLOUR TO MATCH COLOUR OF MORTAR). - BY LANDLORD |
| 37 | G.C TO INSTALL NEW C-CHANNEL C/W INTEGRATED PERIMETER LIGHTING ABOVE SOLDIER COURSE. LANDLORD TO PROVIDE POWER AND JUNCTION BOX FOR ELECTRICAL WIRING. REFER TO EXTERIOR FINISH SCHEDULE. LANDLORD TO COORDINATE DETAILS WITH MANUFACTURER & PROVIDE SUPPORT SYSTEM AS REQUIRED. |
| 38 | 1728mm x 128mm "RED LEAF" ILLUMINATED SIGNAGE OVER DRIVE THRU WINDOW, SUPPLIED BY TDL & INSTALLED BY SIGN COMPANY. LANDLORD TO ENSURE TO PROVIDE ADEQUATE WOOD BLOCKING/BACKING FOR SIGNAGE SUPPORT (COORDINATE WITH SIGN MANUFACTURER). G.C TO COORDINATE WITH SIGN MANUFACTURER AND SIGN INSTALLER FOR LOCATION OF FASTENERS. REFER TO ELECTRICAL DRAWINGS. |
| 39 | APPROXIMATE LOCATION OF PROVINCE STAMP BY SIGN COMPANY. |
| 40 | EXTERIOR LED SIGN LIGHT. REFER TO ELECTRICAL DRAWINGS. - BY LANDLORD |
| 41 | DASHED LINE INDICATES ROOF LINE. |
| 42 | WALL SCONCE. REFER TO ELECTRICAL DRAWINGS. - BY LANDLORD |

The Contractor is to verify all dimensions and conditions on the project and to report any discrepancies to the Tim Hortons Representative prior to commencing work. These drawings are not to be used for construction purposes unless indicated by Tim Hortons as "issued for construction".

nicholas**caragianis**architect inc.

137 Pamilla Street, Ottawa ON K1S 3K9
t: 613 237 6801 f: 613 237 8289 ncarchitect.ca

PROJET / PROJECT

Tim Hortons.

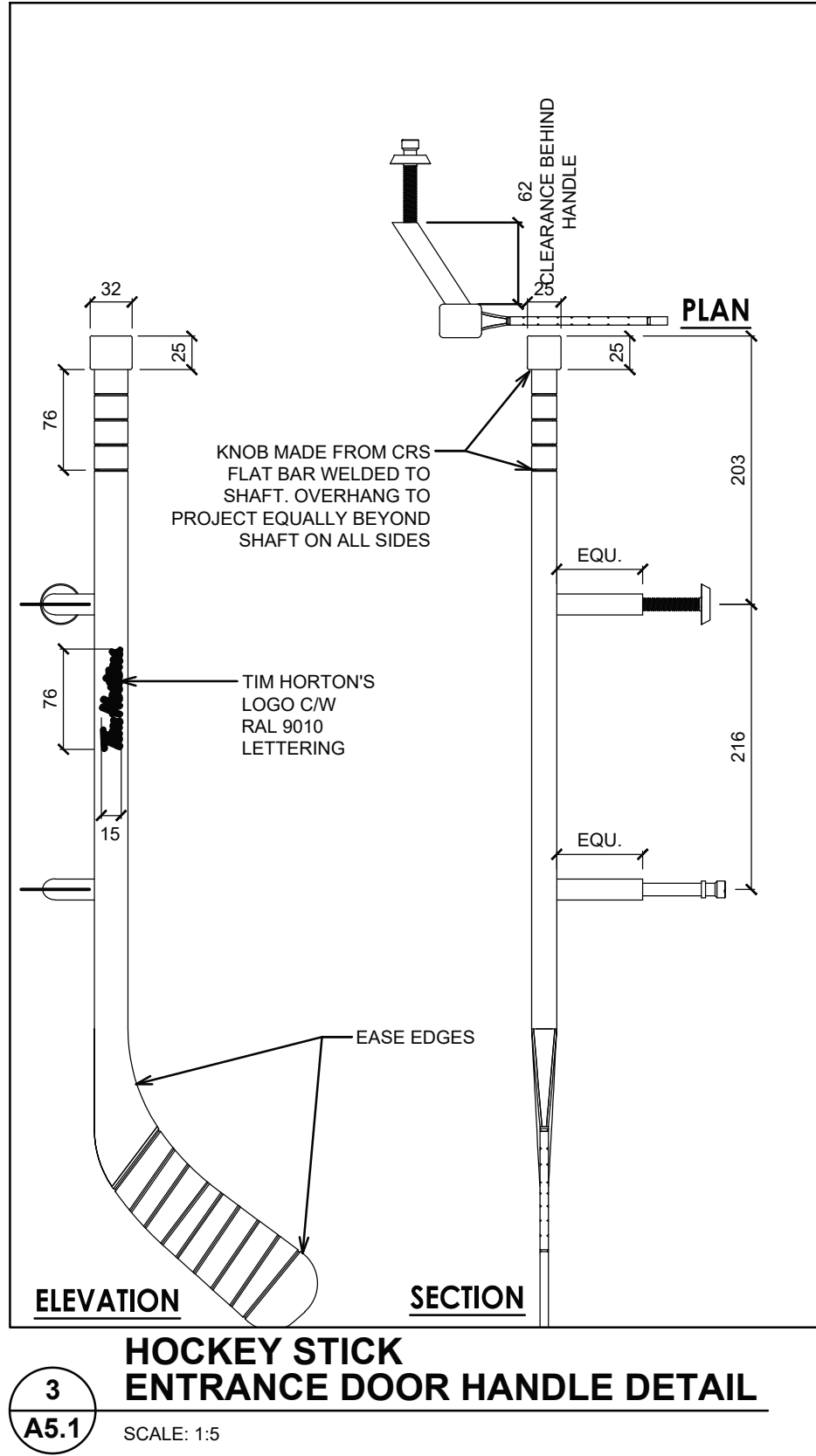
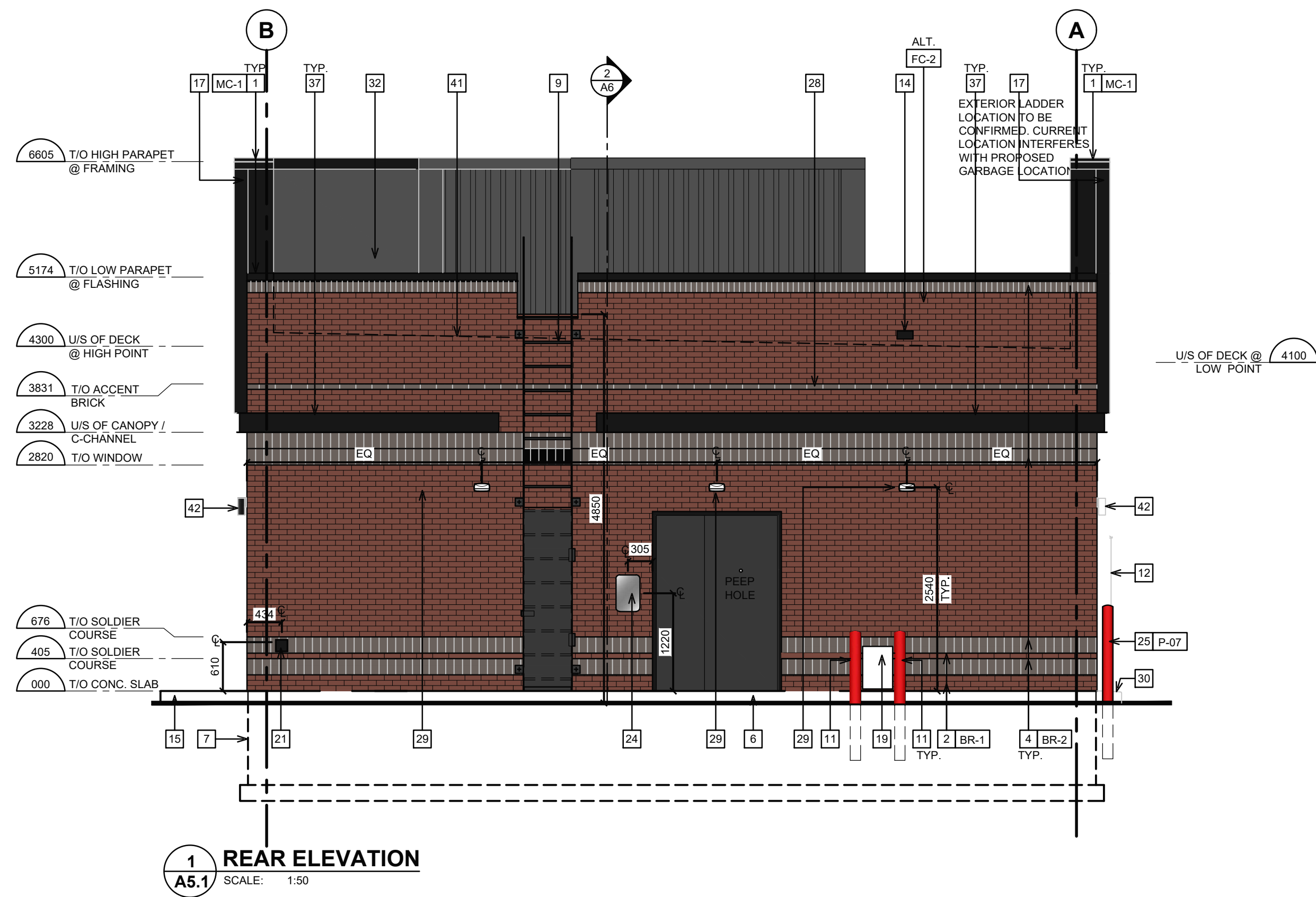
STORE TYPE

2300 BANK STREET,
OTTAWA
ONTARIO

DRAWING TITLE

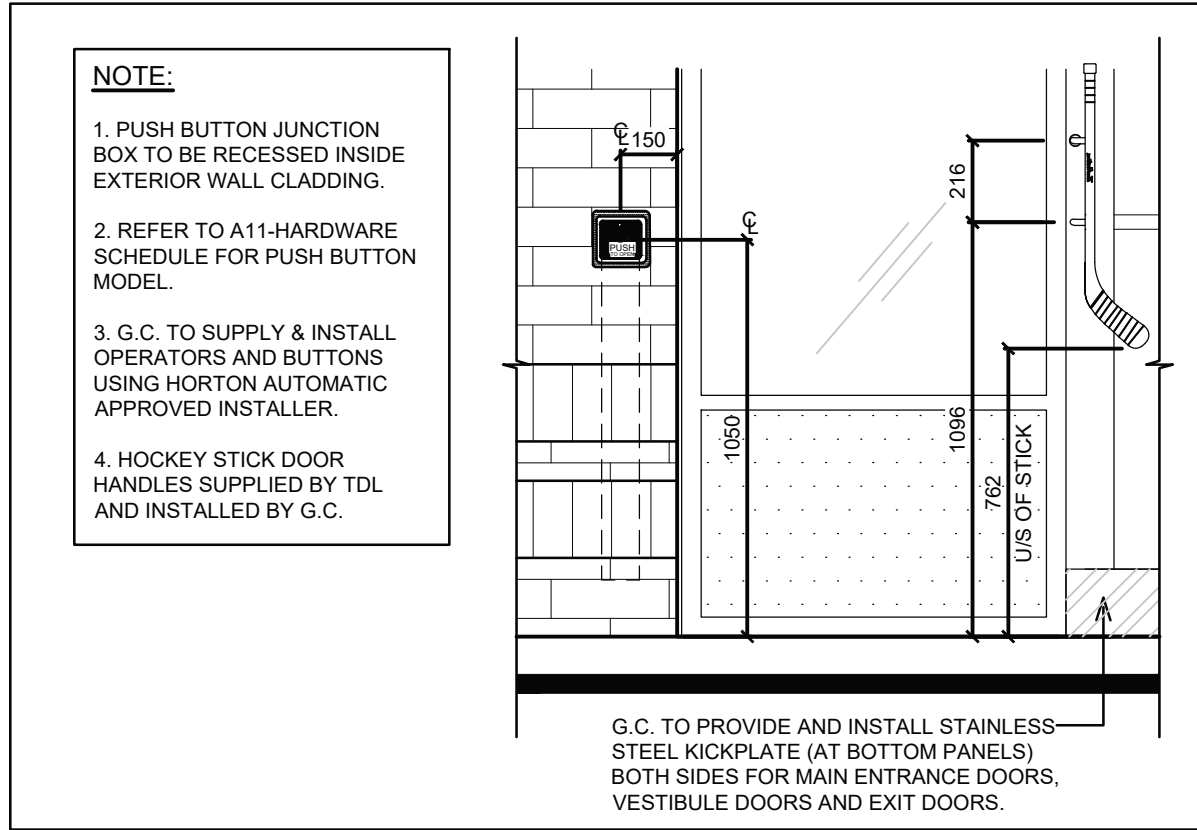
EXTERIOR ELEVATIONS

DRAWN BY SH	CHECKED CC
SCALE 1:50	DATE SEPT 2025
PROJECT NO. 122191	DRAWING NO. A5.0



EXTERIOR FINISH SCHEDULE			
TAG	PRODUCT	MANUF.	TYPE AND COLOUR
MC-1	PREFINISHED METAL FLASHING	FIRESTONE	FLASHING AT BRICK PARAPET - COLOUR: TO MATTE BLACK FLASHING AT FOUNDATION: COLOUR: MATTE BLACK ALL FLASHING AT WINDOWS IS TO BE MATTE BLACK FLASHING AT HIGH PARAPET FEATURE WALL: COLOUR: MATTE BLACK
FC-1	PERFORATED METAL LIGHTBOX FIXTURE	MONTREAL NEON	PERFORATED WHITE METAL OVER BLACK METAL PANELS FRAMED WITH BLACK ALUMINUM FRAME THAT EXTENDS TO GRADE. LED STRIPLIGHT TO CAST LIGHT ALONG PERIMETER OF PERFORATED METAL. A. 1156mm (45.5"W) X 3048mm (120" HIGH) B. 1156mm (45.5"W) X 2235mm (88" HIGH) NOTE: REFER TO EXTERIOR ELEVATIONS FOR PANEL SIZE (PANEL A OR PANEL B)
FC-2	CUSTOM FINISHED EXTRUDED ALUMINUM SIDING	KNOTWOOD (SUPPLIED BY HJC)	6" FLAT SIDING PROFILE (WITH APPROVED CUSTOM FINISH) G.C. TO TOUCH UP IN FIELD. EXTRUDED ALUMINUM OUTSIDE/INSIDE CORNER PIECES, COVERS AND JOINTS WITH APPROVED CUSTOM FINISH. COLOUR: 'CANADIAN SHIELD' NOTE: TO BE INSTALLED IN STAGGERED PATTERN TO AVOID ALIGNED VERTICAL JOINTS.
BR-1	BRICK	ENDICOTT CLAY PRODUCTS	MODULAR FACE BRICK 94mm D x 57mm H x 194mm L. COLOUR: MEDIUM IRONSPOT 77, SMOOTH FINISH, RUNNING BOND. MORTAR: SM730, BRIARWOOD
BR-1.1	TIM STONE (PRIMARY FIELD BRICK)	SHOULDICE	TIM STONE-RED VELVET RUNNING BOND * ONLY TO BE USED IN WESTERN CANADA (SK, AB, BC) WHEN APPROVED BY TH DESIGN
BR-2	BRICK (ACCENT)	ENDICOTT CLAY PRODUCTS	MODULAR FACE BRICK 94mm D x 57mm H x 194mm L. COLOUR: ENDICOTT DARK IRONSPOT, ARTISAN FINISH, SOLDIER COURSE. MORTAR: SM730, BRIARWOOD.
BR-2.1	TIM STONE (SOLDIER COURSE/ ACCENT BAND)	SHOULDICE	TIM STONE-HOT CHOCOLATE* ONLY TO BE USED IN WESTERN CANADA (SK, AB, BC) WHEN APPROVED BY TH DESIGN
P-08	PAINT - REAR DOOR / FRAME, LADDER & HANDRAIL	SHERWIN WILLIAMS	PAINT FOR EXTERIOR METALS. COLOUR: #SW 7069 'IRON ORE' - MIN. 2 FINISH COATS
P-17	PAINT - BOLLARD (ONLY PAINT IN CASE CANT USE THE COVER)	SHERWIN WILLIAMS	PAINT FOR BOLLARD. COLOUR: #SW 6868 'REAL RED' - MIN. 2 FINISH COATS
	CAULKING	FRANKLIN INTERNATIONAL	CAULKING TO MATCH COLOUR OF ADJACENT FINISHES
	C-CHANNEL PERIMETER INTEGRATED LIGHTING	MONTREAL NEON	CUSTOM LENGTH; COLOUR: BLACK.
	ANODIZED ALUMINUM (WINDOW FRAMES, DOOR FRAMES, VESTIBULE FRAMES & DOORS, EXIT ONLY DOOR)	ALUMICOR LIMITED OR APPROVED EQUIVALENT	ALUMINUM FINISH (CLASS 1, 7 MILS MINIMUM) ALUMINUM BLACK ANODIZED BY ALUMICOR. CAULKING BETWEEN WINDOW FRAMES/DOOR FRAMES & EXTERIOR CLADDING COLOUR TO MATCH WINDOW FRAMES (TREMCO DYMONIC). SPANDREL PANEL AT STORE FRONT (ALUMINUM BLACK ANODIZED).
	ANODIZED ALUMINUM (EXTERIOR STOREFRONT SWING DOORS ONLY)		7700 THERMAPORTE THERMALLY BROKEN DOOR SYSTEM (T600A WIDE STILE WITH NO MID RAIL) FINISH TO BE BLACK. HINGES AND DOOR PULL/PUSH TO BE BLACK. DOOR PULL: CUSTOM 'HOCKEY STICK' HANDLES
	WALL PACK		DARK GRAY TEXTURED PAINT
	SCONCE LIGHT		RUGGED CAST-ALUMINUM HOUSING 'BLACK'

- EXTERIOR ELEVATION NOTES**
- EXISTING PREFINISHED METAL FLASHING. REFER TO EXTERIOR FINISH SCHEDULE. - BY LANDLORD
 - EXISTING BRICK. REFER TO EXTERIOR FINISH SCHEDULE. - BY LANDLORD
 - PANELS/ BUMP-OUT FEATURE (REFER TO EXTERIOR FINISH SCHEDULE) INCLUDING ALL MOUNTING HARDWARE/ HAT CHANNELS/ LIGHTING/ DRIVERS TO BE SUPPLIED BY TIM HORTONS AND INSTALLED BY GC. REFER TO SHEET S09 FOR MANUFACTURER INSTALLATION DETAILS. REFER TO ELECTRICAL DRAWINGS FOR JUNCTION BOX LOCATION. G.C TO SITE VERIFY DIMENSIONS WITH MONTREAL NEON.
 - EXISTING SOLDIER COURSE ACCENT BRICK - MODULAR SIZE. REFER TO EXTERIOR FINISH SCHEDULE. - BY LANDLORD
 - EXISTING ANODIZED ALUMINUM FRAMES. REFER TO WINDOW SCHEDULE ON SHEET A11. - BY LANDLORD
 - EXISTING EXPOSED FOUNDATION TO BE PARGED & FREE OF IMPERFECTIONS. - BY LANDLORD
 - EXISTING POURED CONCRETE FOUNDATION. - BY LANDLORD
 - 1067mm (42") HIGH ILLUMINATED SIGN MOUNTED ON EXTERIOR WALL. CLADDING BY SIGN COMPANY. G.C. TO ENSURE TO PROVIDE ADEQUATE WOOD BLOCKING/BACKING FOR SIGNAGE SUPPORT (COORDINATE WITH SIGN MANUFACTURER). G.C TO COORDINATE WITH SIGN MANUFACTURER AND SIGN INSTALLER FOR LOCATION OF FASTENERS. REFER TO ELECTRICAL DRAWINGS. - BY LANDLORD
 - ROOF ACCESS LADDER - BY LANDLORD
 - EXISTING METAL PIPE RAILING. REFER TO DETAIL - BY LANDLORD
 - 150mm DIA. METAL BOLLARD FILL W/ CONCRETE C/W BOLLARD COVER. REFER TO DETAIL SIA7.1. - BY LANDLORD
 - EXISTING DRIVE-THRU WINDOW WITH INSULATED PANEL. REFER TO DRIVE-THRU WINDOW SCHEDULE ON SHEET A11. - BY LANDLORD
 - RESERVED.
 - EXISTING OVERFLOW SCUPPER. REFER TO DETAIL- BY LANDLORD
 - EXISTING CONCRETE SIDEWALK (BY OTHERS). REFER TO SITE PLAN. - BY LANDLORD
 - EXTERIOR RECYCLING UNIT SUPPLIED BY TDL GROUP CORP. & INSTALLED BY G.C.
 - BUMP-OUT FEATURE (COLOUR MATTE BLACK) SUPPLIED BY TIM HORTONS C/W PREFINISHED METAL FLASHING BY G.C. G.C. TO COORDINATE WITH MONTREAL NEON FOR INSTALLATION. REFER TO DETAILS MARKED ON EXTERIOR ELEVATIONS.
 - HWT CONCENTRIC VENT TO BE INSTALLED PRIOR TO EXT. CLADDING. EXACT LOCATION TO BE DETERMINED ON SITE. - BY LANDLORD
 - EXISTING LOCATION OF GAS METER. REFER TO MECHANICAL DRAWINGS. - BY LANDLORD
 - ANODIZED ALUMINUM (EXTERIOR STOREFRONT SWING DOORS). G.C TO INSTALL NEW 'HOCKEY STICK DOOR HANDLES' ON PULL SIDE (SUPPLIED BY TDL GROUP LTD).REFER TO WINDOW SCHEDULE ON SHEET A11. -BY LANDLORD
 - LOCATION OF REMOTE SUCTION FOR GREASE INTERCEPTOR. REFER TO MECHANICAL DRAWINGS. - BY LANDLORD
 - RESERVED.
 - RESERVED.
 - G.C. TO PROVIDE & INSTALL TWO (2) "NO-SMOKING WITHIN 7.5m" SIGNAGE AT ENTRIES/EXITS. CONFIRM SIZE, COLOUR & REQUIREMENTS AS PER SPECIFIC LOCAL CODES AND BYLAWS.
 - RESERVED.
 - G.C. TO PROVIDE & INSTALL STAINLESS STEEL KICK PLATE (AT BOTTOM PANELS) ON BOTH SIDES FOR MAIN ENTRANCE DOORS, VESTIBULE DOORS & EXIT DOORS. REFER TO EXTERIOR FINISH SCHEDULE. - BY LANDLORD
 - COLUMN DOOR OPERATOR FOR BARRIER FREE DOORS (INSTALLED AT MIN. 150mm A.F.F. AND MAX 1100mm A.F.F.) REFER TO ELECTRICAL DRAWINGS AND DOORHARDWARE SCHEDULE ON SHEET A11. REFER TO DETAIL S1A5 AND SHEETS A2. VERIFY WITH LOCAL CODE FOR PUSH BUTTON REQUIREMENTS. SUPPLIED AND INSTALLED BY LANDLORD - BY LANDLORD
 - EXISTING RUNNING BOND ACCENT BRICK - MODULAR SIZE. REFER TO EXTERIOR FINISH SCHEDULE. - BY LANDLORD
 - EXISTING WALL PACK. REFER TO ELECTRICAL DRAWINGS. - BY LANDLORD
 - G.C TO PROVIDE CONCRETE CURB ALONG DRIVE-THRU LANE. CURB TO PROJECT 200mm FROM FACE OF EXTERIOR CLADDING AND LENGTH OF CURB IS EXTENT OF FEATURE WALL. - BY LANDLORD
 - EXTERIOR POP FRAMES (SUPPLIED AND INSTALLED BY OTHERS). GC TO ENSURE TO PROVIDE ADEQUATE WOOD BLOCKING IN WALL. - BY LANDLORD
 - EXISTING TPO ROOF MEMBRANE ON BACK OF PARAPET WALLS. REFER TO SPECIFICATIONS. - BY LANDLORD
 - RESERVED.
 - RESERVED.
 - EXISTING INSULATED METAL PANEL (COLOR BLACK ANODIZED). REFER TO WINDOW SCHEDULE ON SHEET A11. - BY LANDLORD
 - G.C TO PROVIDE CONTROL JOINT (AS PER MANUFACTURER SPECIFICATIONS) COMPLETE WITH BACKING ROD & SEALANT (SEALANT COLOUR TO MATCH COLOUR OF MORTAR). - BY LANDLORD
 - G.C TO INSTALL NEW C-CHANNEL C/W INTEGRATED PERIMETER LIGHTING ABOVE SOLDIER COURSE. LANDLORD TO PROVIDE POWER AND JUNCTION BOX FOR ELECTRICAL WIRING. REFER TO EXTERIOR FINISH SCHEDULE. LANDLORD TO COORDINATE DETAILS WITH MANUFACTURER & PROVIDE SUPPORT SYSTEM AS REQUIRED.
 - 1728mm x 1728mm 'RED LEAF' ILLUMINATED SIGNAGE OVER DRIVE THRU WINDOW, SUPPLIED BY TDL & INSTALLED BY SIGN COMPANY. LANDLORD TO ENSURE TO PROVIDE ADEQUATE WOOD BLOCKING/BACKING FOR SIGNAGE SUPPORT (COORDINATE WITH SIGN MANUFACTURER). G.C TO COORDINATE WITH SIGN MANUFACTURER AND SIGN INSTALLER FOR LOCATION OF FASTENERS. REFER TO ELECTRICAL DRAWINGS.
 - APPROXIMATE LOCATION OF PROVINCE STAMP BY SIGN COMPANY.
 - EXTERIOR LED SIGN LIGHT. REFER TO ELECTRICAL DRAWINGS. - BY LANDLORD
 - DASHED LINE INDICATES ROOF LINE.
 - WALL SCONCE. REFER TO ELECTRICAL DRAWINGS. - BY LANDLORD



SYMBOL LEGEND	
	DETAIL NUMBER DRAWING NUMBER
	SECTION NUMBER DRAWING NUMBER
	KEY NOTE
	EXISTING REMOVED.
	HATCH DENOTES AREA NOT IN SCOPE OF WORK UNLESS NOTED.
	HATCH DENOTES AREAS THAT ARE EXISTING. CLEAN AND PREPARE FOR NEW PAINT IF NOTED.

- GENERAL NOTES**
- REFER TO EXTERIOR FINISH SCHEDULE FOR CAULKING COLOUR.
 - THE CONTRACTOR SHALL BECOME FAMILIAR WITH AND FOLLOW ALL DRAWINGS AND SPECIFICATIONS.
- MASONRY/MORTAR SPEC.**
- THE MORTAR COLOURING BY ROCKWOOD PIGMENTS. SEE FINISH SCHEDULE A5
 - THE SPECIFICATIONS OF THE COLOURING MANUFACTURER ARE TO BE FOLLOWED.
 - ALL BRICK JOINTS ARE TO BE RAKED 6mm DEEP.
 - ALL BRICK MORTAR IS TO BE COLOURED AS SPECIFIED.
 - ANY BRICK MASONRY WHICH DOES NOT MATCH THE APPROVED SPECIFICATION WILL BE REPLACED AT THE CONTRACTOR'S EXPENSE.
 - THE CONTRACTOR SHALL BECOME FAMILIAR WITH AND FOLLOW ALL DRAWINGS AND SPECIFICATIONS.

- GENERAL NOTES**
- G.C. TO COORDINATE HEIGHT OF THE ROOF WITH LANDLORD. ENSURE ALL THE SUB-TRADES ARE MADE AWARE OF THE FINAL COORDINATED HEIGHT.

ISSUE TABLE

NO.	DATE YYYYMMDD	DESCRIPTION
01	2025-09-12	INITIAL SK1 FOR REVIEW
02	2025-09-22	INITIAL SK2 FOR REVIEW
03	2025-09-24	INITIAL SK3 FOR REVIEW
04	2025-09-25	PRE-CON SUBMISSION
05	2025-10-20	INITIAL SK5 FOR REVIEW

REVISIONS

NO.	DATE YYYYMMDD	DESCRIPTION
06	2025-10-29	INITIAL SK6 FOR REVIEW
07	2025-11-19	SITE PLAN UPDATED FOR REVIEW
08	2025-12-17	SITE PLAN APPLICATION

This drawing is owned by or licensed for use by Tim Hortons (or its affiliated or related companies) and may not be reproduced, used, downloaded, disseminated, published, or transferred in any form or by any means, except with the prior written consent of Tim Hortons. Copyright infringement is a violation of federal law subject to criminal and civil penalties.

The Contractor is to verify all dimensions and conditions on the project and to report any discrepancies to the Tim Hortons Representative prior to commencing work. These drawings are not to be used for construction purposes unless indicated by Tim Hortons as "issued for construction".

ONTARIO ASSOCIATION OF ARCHITECTS
N. Caragianis
NICHOLAS CARAGIANIS
LICENCE
5057

nicholascaragianisarchitect inc.

137 Pamilla Street, Ottawa ON K1S 3K9
t: 613 937 6801 f: 613 937 8289 ncarhitect.ca

PROJET / PROJECT

Tim Hortons

STORE TYPE

LOCATION

2300 BANK STREET,
OTTAWA
ONTARIO

DRAWING TITLE

EXTERIOR ELEVATIONS

DRAWN BY SH	CHECKED CC
SCALE 1:50	DATE SEPT 2025
PROJECT NO. 122191	DRAWING NO. A5.1