

# **Tree Conservation Report**

**PROPERTY STUDIED:**  
130 David Manchester Rd.  
Ottawa, Ontario  
PC2020 - 0133

September 10, 2021

**Prepared for:**

Doug Jones  
Playvalue Toys  
130 David Manchester Rd.  
Ottawa, Ontario  
K0A 1L0  
Tel.: 613-722-0175

**Prepared by:**

Erik von Luczenbacher  
E&S Tree Experts  
PMB #427  
2647 Alta Vista Drive  
Ottawa, Ontario  
K1V 7T5  
Tel.: 613-978-4372  
estreeexperts@gmail.com  
www.allthetrees.com

## Contents

REPORT OBJECTIVE .....	4
SITE OVERVIEW .....	4
TREE INVENTORY .....	4
Tree Inventory Zones .....	5
Tree Inventory Sheets for Zones 1,2 & 3.....	7
Tree Inventory Sheets for Zone 4 .....	12
BUILDING SITE AND AREA OF DISTURBANCE .....	14
SITE-SPECIFIC TREE PROTECTION MEASURES .....	15
PROTECTIVE FENCING.....	16
WILDLIFE PROTECTION.....	17
TREE PLANTING RECOMMENDATIONS.....	17
Appendix.....	18

## REPORT OBJECTIVE

This Tree Conservation Report examines the proposed expansion of the Playvalue toy store located at 130 David Manchester Road (PC2020-0133) and the ways in which the trees on the property could be affected because of this expansion. The expansion is planned for September 2021.

The objective of this report is to provide an accurate inventory of the current distinctive tree cover on the site, as well as to locate areas that will be affected by construction and to suggest mitigating measures.

Extensive field work for this report was completed during a site visit on August 15, 2020, from 8:00am to 4:00pm. A follow up visit was completed on June 22, 2021, from 2:00pm to 3:00pm, to address comments provided by City of Ottawa staff. Both site visits involved a survey of the entire property.

## SITE OVERVIEW

This four-acre commercial property is a flat, semi-wooded lot. The lot appears to stay relatively dry, largely due to a drainage swale that runs through the western part of the property.

The tree cover consists of three main groupings of trees, and two buffer zones: one between the neighbouring commercial property and one along David Manchester Rd.

The predominant species on this site are white cedar, white spruce, white pine, and trembling aspen. Ground cover in the wooded areas consists mostly of poison ivy and wild grape.

There were no endangered species, species at risk, or species of significance found on the site or adjacent to the site; however, there is a substantial amount of common buckthorn that appears to be encroaching into the open areas of the lot.

## TREE INVENTORY

### **TOTAL NUMBER OF TREES INVENTORIED (10+ CM DIAMETRE AT BREAST HEIGHT): 250**

To provide a thorough account of the distinctive trees on this site, the tree groupings or “zones” have been defined on an aerial photo, see Figure 1 (next page).

There are four main groupings of trees on the site and each group has been inventoried separately to give a clear representation of the species and their locations on the site. Several reference trees have been identified throughout the property, to provide a better understanding of the species of trees and their locations on the site, in relation to the inventory list, see Figure 2 (page 6).

Zones 1 through 3 inclusively were thoroughly inventoried, but no tags were installed due to the upcoming construction. The trees in Zone 4 have been physically tagged with aluminum nails and number tags to facilitate future maintenance procedures but have not been assessed for maintenance at this time. A distinctive tree for this type of site is classified as a tree with a diameter at breast height (DBH) of 10 centimetres or greater. There are multitudes of trees within these zones that fall below this DBH.

Zones 1, 2 and 3 are dense, closed canopy stands, in the early stages of forest succession. The selection consists of mainly white cedar and small to medium diameter pioneer species with little to no commercial value. The inventory was performed with these facts in mind, and no pruning, or other maintenance would be required in these stands. Trees within these groupings are in fair to good condition unless noted on the inventory list.

### Tree Inventory Zones



*Fig. 1: Tree inventory zones on the property at 130 David Manchester Rd.*





**Fig. 2: Trees located for reference at 130 David Manchester Rd.**

## Tree Inventory Sheets for Zones 1,2 & 3

Tree Inventory Sheet - Revised June 23, 2021

note: 173 Trees Total

Tree No.	Species	Condition (P, F, G)	D.B.H. (cm)	Notes	Remove/Retain
<b>ZONE 1 118 trees</b>					
1	white pine	F	21	Forest tree, no special notes	Remove
2	trembling aspen	F	12	Forest tree, no special notes	Remove
3	balsam fir	F	13.8	Forest tree, no special notes	Remove
4	trembling aspen	F	24.4	Leaning	Remove
5	trembling aspen	P	23	Dead top	Remove
6	balsam fir	P	20	DEAD	Remove
7	trembling aspen	p	19.2	Poor growth form	Remove
8	white cedar	F	13	Forest tree, no special notes	Remove
9	white spruce	F	17	Forest tree, no special notes	Remove
10	white cedar	G	14.6	Forest tree, no special notes	Remove
11	trembling aspen	F	19.2	Forest tree, no special notes	Remove
12	white cedar	P	17	Leaning	Remove
13	white cedar	F	21.3	Forest tree, no special notes	Remove
14	white pine	G	21	Forest tree, no special notes	Remove
15	white cedar	F	25.1	Forest tree, no special notes	Remove
16	white spruce	G	35.1	Forest tree, no special notes	Remove
17	white cedar	P	22	Leaning	Remove
18	white cedar	P	19	Leaning	Remove
19	trembling aspen	G	24.9	Forest tree, no special notes	Remove
20	trembling aspen	G	21.7	Forest tree, no special notes	Remove
21	American elm	F	12.6	Forest tree, no special notes	Remove
22	trembling aspen	F	17	Forest tree, no special notes	Remove
23	white cedar	G	27	Forest tree, no special notes	Remove
24	white cedar	F	39	Forest tree, no special notes	Remove
25	white cedar	F	37.5	Forest tree, no special notes	Remove
26	white cedar	F	21.4	Forest tree, no special notes	Remove
27	white spruce	F	18.5	Forest tree, no special notes	Remove
28	white cedar	F	16.4	Forest tree, no special notes	Remove
29	white birch	G	23	Forest tree, no special notes	Remove
30	trembling aspen	F	18.5	Forest tree, no special notes	Remove
31	white spruce	G	21.3	Forest tree, no special notes	Remove
32	white pine	G	13.2	Forest tree, no special notes	Remove

33	American elm	P	12	infected: elm yellows	Remove
34	white cedar	F	14.1	Forest tree, no special notes	Remove
35	white cedar	G	19.8	Forest tree, no special notes	Remove
36	white cedar	F	10.1	Forest tree, no special notes	Remove
37	white cedar	F	19.9	Forest tree, no special notes	Remove
38	white cedar	F	18	Forest tree, no special notes	Remove
39	trembling aspen	P	30	90 % Dead	Remove
40	white cedar	F	16	Forest tree, no special notes	Remove
41	white cedar	F	18.8	Forest tree, no special notes	Remove
42	white cedar	F	28.6	Forest tree, no special notes	Remove
43	white spruce	G	28.5	Forest tree, no special notes	Remove
44	white spruce	G	23.2	Forest tree, no special notes	Remove
45	white spruce	G	11.5	Forest tree, no special notes	Remove
46	white spruce	F	10.2	Forest tree, no special notes	Remove
47	white spruce	F	11	Forest tree, no special notes	Remove
48	white spruce	F	13.6	Forest tree, no special notes	Remove
49	white spruce	F	13	Forest tree, no special notes	Remove
50	white spruce	F	11.3	Forest tree, no special notes	Remove
51	white pine	G	24	Near playground structure Hwy7	Remove
52	white spruce	F	12	edge of zone 1, near playground structure	Remove
53	trembling aspen	P	14.1	Poor growth form	Remove
54	trembling aspen	F	20.6	Forest tree, no special notes	Remove
55	white pine	G	18	Forest tree, no special notes	Remove
56	trembling aspen	P	10	damage to main stem	Remove
57	white spruce	F	10	Forest tree, no special notes	Remove
58	trembling aspen	F	12.3	Forest tree, no special notes	Remove
59	white spruce	F	12.6	Forest tree, no special notes	Remove
60	white cedar	F	13.2	Forest tree, no special notes	Remove
61	white cedar	F	15.6	Forest tree, no special notes	Remove
62	white cedar	F	13.2	Forest tree, no special notes	Remove
63	white spruce	G	32	has Christmas lights installed along Hwy 7	Remove
64	white spruce	F	21.6	Forest tree, no special notes	Remove
65	white spruce	F	21.6	Forest tree, no special notes	Remove
66	white spruce	P	17.6	main stem has horizontal crack	Remove
67	white spruce	G	17.3	Forest tree, no special notes	Remove
68	white spruce	F	13.3	Forest tree, no special notes	Remove
69	white spruce	F	14	Forest tree, no special notes	Remove
70	white spruce	F	18.5	Forest tree, no special notes	Remove
71	trembling aspen	G	11.1	Forest tree, no special notes	Remove
72	white cedar	F	12	Forest tree, no special notes	Remove
73	white pine	G	31	Forest tree, no special notes	Remove



74	white cedar	G	18.3	Forest tree, no special notes	Remove
75	white cedar	F	14	Forest tree, no special notes	Remove
76	white spruce	F	14.1	Forest tree, no special notes	Remove
77	white cedar	F	16.1	Forest tree, no special notes	Remove
78	white pine	F	35.6	Leaning stem, heavy crown	Remove
79	white cedar	G	16.6	Forest tree, no special notes	Remove
80	white spruce	F	32	Forest tree, no special notes	Remove
81	trembling aspen	P	44	80 % Dead	Remove
82	white cedar	F	30.3	Cavity in main stem	Remove
83	white spruce	G	32	Forest tree, no special notes	Remove
84	trembling aspen	G	12	Forest tree, no special notes	Remove
85	white cedar	F	32.5	Edge of swale	Remove
86	white cedar	P	22.3	Heavy lean	Remove
87	white cedar	F	16.1,16.4	Multi - stemmed	Remove
88	white spruce	F	16.7	Edge of swale, west side	Remove
89	white cedar	F	13.4	Forest tree, no special notes	Remove
90	white cedar	F	13	Forest tree, no special notes	Remove
91	white cedar	F	13.2	Forest tree, no special notes	Remove
92	white cedar	F	13.6	Forest tree, no special notes	Remove
93	white cedar	F	14	Forest tree, no special notes	Remove
94	white cedar	G	14.1	Forest tree, no special notes	Remove
95	white cedar	G	13	Forest tree, no special notes	Remove
96	white cedar	F	19	Forest tree, no special notes	Remove
97	white cedar	F	20.8	Forest tree, no special notes	Remove
98	white cedar	F	18.1	Forest tree, no special notes	Remove
99	white cedar	P	36.6	Broken top	Remove
100	white cedar	F	21.2	Forest tree, no special notes	Remove
101	white cedar	F	22.2	Forest tree, no special notes	Remove
102	white cedar	F	23.3	Forest tree, no special notes	Remove
103	white cedar	F	23.6	Forest tree, no special notes	Remove
104	white cedar	F	22	Forest tree, no special notes	Remove
105	white cedar	G	17.2	Forest tree, no special notes	Remove
106	white cedar	G	21.2	Forest tree, no special notes	Remove
107	white cedar	G	20	Forest tree, no special notes	Remove
108	white cedar	G	14.6	Forest tree, no special notes	Remove
109	white cedar	F	29	Double top, edge of swale, west side	Remove
110	white pine	F	20	Forest tree, no special notes	Remove
111	white cedar	F	20	Forest tree, no special notes	Remove
112	white cedar	G	13.6	Forest tree, no special notes	Remove
113	white cedar	F	13.2	Forest tree, no special notes	Remove
114	white cedar	F	10.1	Forest tree, no special notes	Remove
115	white spruce	F	20.6	Forest tree, no special notes	Remove
116	white cedar	F	32.6	Leaning	Remove
117	white pine	F	17.5	Corner of swale, west side	Remove
118	white pine	F	14.6	Forest tree, no special notes	Remove

Tree No.	Species	Condition (P, F, G)	D.B.H. (cm)	Notes	Remove/Retain
			<b>ZONE 2</b>	<b>36 trees</b>	
119	white cedar	F	16	Corner of swale	Retain
120	white cedar	F	17.1	Corner of swale	Retain
121	white cedar	F	14.2	Forest tree, no special notes	Retain
122	trembling aspen	F	24.1	Forest tree, no special notes	Retain
123	white cedar	F	24.3	Forest tree, no special notes	Retain
124	white cedar	F	10	Forest tree, no special notes	Retain
125	trembling aspen	P	22.5	Dead	Retain
126	white cedar	F	10.1	Forest tree, no special notes	Retain
127	white cedar	F	10	Forest tree, no special notes	Retain
128	white cedar	F	11.2	Forest tree, no special notes	Retain
129	white cedar	F	10.5	Forest tree, no special notes	Retain
130	white cedar	F	10.1	Forest tree, no special notes	Retain
131	white cedar	G	14.1	Forest tree, no special notes	Retain
132	white cedar	G	14.5	Forest tree, no special notes	Retain
133	white cedar	G	13.2	Forest tree, no special notes	Retain
134	white cedar	F	12	Forest tree, no special notes	Retain
135	white cedar	F	12.2	Forest tree, no special notes	Retain
136	white cedar	G	10.2	Forest tree, no special notes	Retain
137	American elm	P	13	Infected, elm yellows	Retain
138	white cedar	F	19	Forest tree, no special notes	Retain
139	white cedar	F	19.7	Forest tree, no special notes	Retain
140	white cedar	F	17.3	Forest tree, no special notes	Retain
141	white cedar	G	16	Forest tree, no special notes	Retain
142	white cedar	F	16.8	Forest tree, no special notes	Retain
143	white cedar	F	14.2	Forest tree, no special notes	Retain
144	American elm	F	16.1	Forest tree, no special notes	Retain
145	white spruce	F	24	Edge of swale	Retain
146	white spruce	P	29	Poor growth form	Retain
147	tamarack	G	11.5	Newer planting	Retain
148	tamarack	G	10.3	Newer planting	Retain
149	tamarack	G	9.6	Newer planting	Retain
150	tamarack	G	8.8	Newer planting	Retain
151	tamarack	G	7.5	Newer planting	Retain
152	tamarack	G	8.8	Newer planting	Retain
153	tamarack	G	9	Newer planting	Retain
154	tamarack	G	8.2	Newer planting	Retain

Tree No.	Species	Condition (P, F, G)	D.B.H. (cm)	Notes	Remove/Retain
			<b>ZONE 3</b>	<b>19 trees</b>	
155	balsam fir	F	18.5	Forest tree, no special notes	Remove

156	white spruce	F	14.2	Forest tree, no special notes	Remove
157	white cedar	F	19.7	Forest tree, no special notes	Remove
158	white cedar	F	34	Forest tree, no special notes	Remove
159	white cedar	F	12	Forest tree, no special notes	Remove
160	white cedar	F	11.6	Forest tree, no special notes	Remove
161	ironwood	G	24.2	Forest tree, no special notes	Remove
162	balsam fir	F	27.2	Forest tree, no special notes	Remove
163	white cedar	G	17.8	Forest tree, no special notes	Remove
164	white cedar	F	20	Forest tree, no special notes	Remove
165	white cedar	F	17.6	Forest tree, no special notes	Remove
166	white cedar	F	19.2	Forest tree, no special notes	Remove
167	white spruce	F	19	Forest tree, no special notes	Remove
168	white spruce	F	31,27,26.2	Multi - stemmed	Remove
169	white pine	P	40.4	Dead	Remove
170	white cedar	F	14.8	Forest tree, no special notes	Remove
171	white cedar	F	14	Forest tree, no special notes	Remove
172	white cedar	P	16.3	Dead	Remove
173	white cedar	P	18.4	Broken top	Remove

## Tree Inventory Sheets for Zone 4

Tree Inventory Sheet - revised June 23, 2021

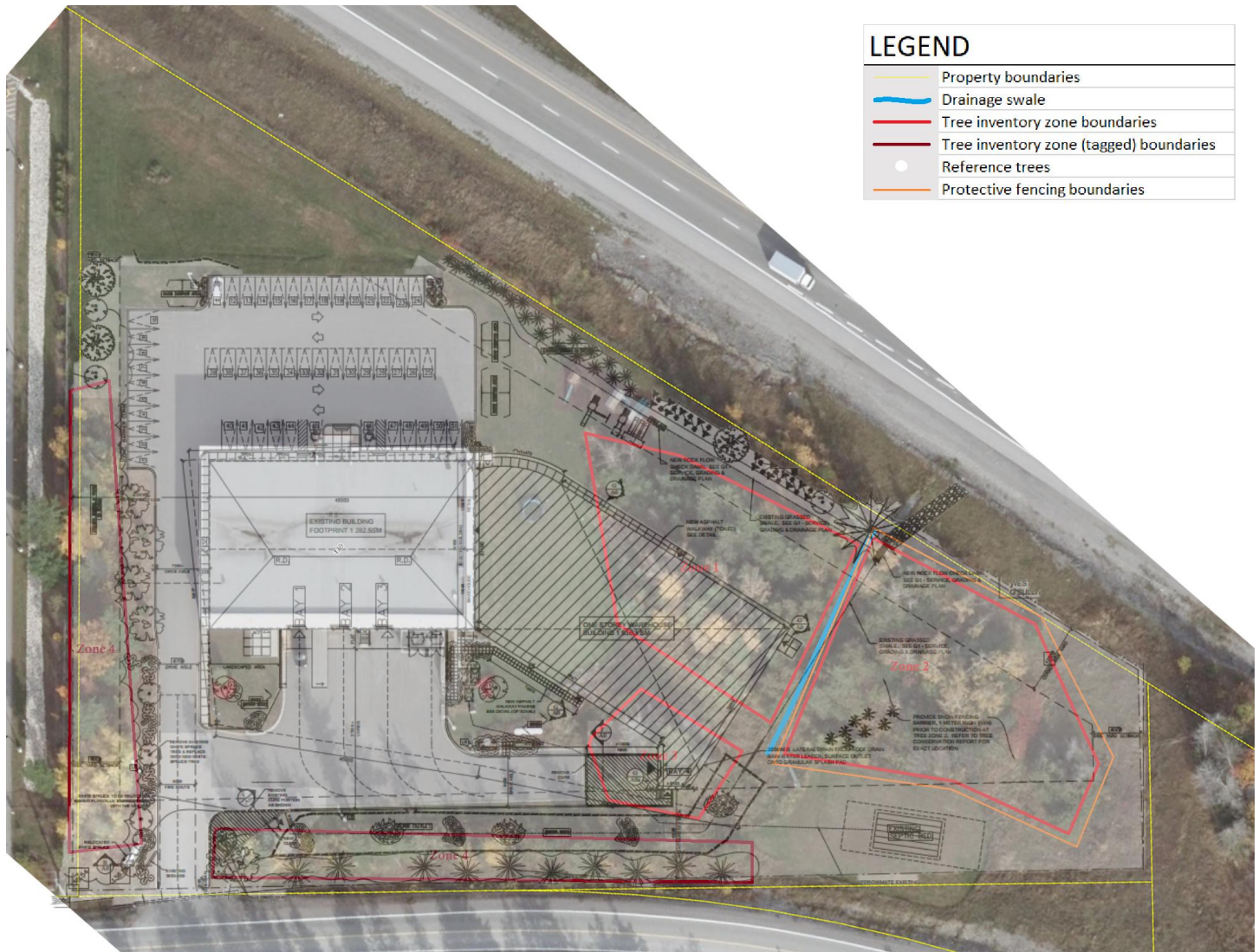
Tree No.	Species	Condition (P, F, G)	D.B.H. (cm)	Notes	Retain/Remove
<b>ZONE 4 (tagged trees)</b>					<b>77 Trees</b>
600	balsam poplar	P	17.9	Damage to main stem	Retain
601	balsam fir	F	12.5	No special comments	Retain
602	white birch	F	15.5	No special comments	Retain
603	white birch	F	13	No special comments	Retain
604	white spruce	F	12.2	No special comments	Retain
605	white birch	F	11.7	No special comments	Retain
606	white pine	F	24.8	No special comments	Retain
607	balsam fir	F	12	No special comments	Retain
608	balsam fir	F	14.6	No special comments	Retain
609	white pine	F	23	No special comments	Retain
610	balsam fir	F	11.1	No special comments	Retain
611	balsam fir	F	14.6	No special comments	Retain
612	white spruce	F	19.3	No special comments	Retain
613	white birch	G	39	Slight lean towards neighbouring property	Retain
614	white spruce	P	27.4	Toppled, dead	Remove
615	balsam fir	G	23.4	No special comments	Retain
616	white spruce	F	22.7	Very close to property fence	Retain
617	white spruce	G	39.5	No special comments	Retain
618	white pine	F	15.8	Close competition with neighbouring oak	Retain
619	red oak	G	34.4	Close competition with neighbouring white pine	Retain
699	white pine	F	40.5	Edge tree, Christmas lights installed	Retain
620	balsam fir	F	14.6	No special comments	Retain
621	white pine	P	15.6	Damage to main stem	Retain
622	balsam fir	G	22.5	No special comments	Retain
623	white pine	F	15.2	No special comments	Retain
624	balsam fir	F	16.7	No special comments	Retain
625	white pine	F	20.2	Curved stem growth	Retain
626	white pine	G	12.4	No special comments	Retain
627	black ash	F	10.5	No special comments	Retain
628	black ash	F	15.5	No special comments	Retain
629	black ash	F	11.7	No special comments	Retain
630	white pine	G	35.8	Slight lean towards neighbouring property	Retain
631	trembling aspen	G	13.1	No special comments	Retain
632	trembling aspen	F	11.5	No special comments	Retain
633	trembling aspen	F	14.9	No special comments	Retain

634	trembling aspen	P	12	No special comments	Retain
635	trembling aspen	F	17.5	No special comments	Retain
636	trembling aspen	F	14	No special comments	Retain
637	trembling aspen	F	13.2	No special comments	Retain
638	trembling aspen	F	12.2	No special comments	Retain
639	trembling aspen	F	12.6	No special comments	Retain
640	trembling aspen	F	13.6	No special comments	Retain
641	trembling aspen	F	13	No special comments	Retain
642	trembling aspen	F	14.1	No special comments	Retain
643	trembling aspen	F	13	No special comments	Retain
644	trembling aspen	F	12.2	No special comments	Retain
645	trembling aspen	F	12.6	No special comments	Retain
646	trembling aspen	F	15	No special comments	Retain
647	trembling aspen	F	14.8	No special comments	Retain
648	trembling aspen	F	14.8	No special comments	Retain
649	white cedar	F	26.5	No special comments	Retain
650	white cedar	34.4	P	Significant crown dieback, location beside John Deere dealership, at David Manchester	Retain
651	white spruce	34	P	Significant crown dieback	Retain
652	trembling aspen	G	15.5	No special comments	Retain
653	balsam fir	G	11.3	No special comments	Retain
654	white pine	P	11.3	No special comments	Retain
655	white cedar	P	30	Significant crown dieback	Remove
656	white pine	G	11.5	New planting, beside entrance drive	Remove
657	white cedar	F	17.3	No special comments	Remove
658	white spruce	F	32.5	No special comments	Remove
659	white cedar	F	11.2	No special comments	Remove
660	white pine	F	32.6	No special comments	Remove
661	white pine	F	11.2	No special comments	Retain
662	white pine	F	24.5	No special comments	Retain
663	white pine	F	10.4	No special comments	Retain
664	white spruce	F	19.2	No special comments	Retain
665	white spruce	F	19	No special comments	Retain
666	white pine	G	11.3	No special comments	Retain
667	white cedar	G	28.5	No special comments	Retain
668	white pine	G	10.2	No special comments	Retain
669	white spruce	F	25.5	Significant deadwood present	Retain
670	white cedar	G	11.2	No special comments	Retain
671	white spruce	F	17.4	No special comments	Retain
672	white cedar	F	25.5	Red ribbon attached	Retain
673	white cedar	F	28.2	red ribbon attached	Retain
674	white cedar	P	32.7	Dead top, significant deadwood throughout	Retain
675	white cedar	F	16.5	Damage to main stem	Retain



## BUILDING SITE AND AREA OF DISTURBANCE

The proposed project involves an expansion to the southeast of the current building. The expansion will require the removal of all trees in tree inventory Zone 1 and 3 (Fig. 3 and Fig.4). Several trees will need to be removed from Zone 4, where the entrance driveway will be modified. The remaining tree inventory zones are at a safe distance from the proposed construction site and are further protected by barriers such as the drainage swale and the parking lot and driveways.



**Fig. 3: Estimated area of disturbance from construction**





**Fig. 4: Trees to retain / remove**

## SITE-SPECIFIC TREE PROTECTION MEASURES

Care should be taken to preserve Zones 2 and 4 during construction. Temporary fencing should be installed around these zones at the limits of the critical root zone (CRZ), and access to these zones should be forbidden during construction.

Trees along the edge of Zone 2 average 25cm DBH. Protective fencing should be erected at a distance 2.5M from the stand and encircling the entire stand (Fig 5). Attach signs to the fencing at 10 metre intervals, identifying that the fencing is to protect the trees and their critical root zones, shall not be moved and shall be maintained until the construction is complete.

Both Zone 4 areas are bordered by curbs and parking lot. In this case the curb edges should be considered the protective boundary for these stands, and no fencing will be required.

This site does not have any free-standing distinctive trees, so a focus on preserving the wooded plots is important both to preserve the tree cover and for the benefit of the local wildlife.



*Fig. 5: Tree protection fencing boundary*

## PROTECTIVE FENCING

As per part VI of the City of Ottawa tree protection Bylaw (2020-340), when construction is to occur close to trees, a protective fence must be erected at the edge of the critical root zone (CRZ). The fence must be at least 1.2 meters in height and must be installed in such a way that it can not be altered.

Within the CRZ, no one is permitted to:

- place any material or equipment, including outhouses.
- raise or lower the existing grade; or extend any hard surface or significantly change landscaping.
- attach any signs, notices, or posters to a tree.
- damage the root system, trunk, or branches of a tree.
- direct exhaust fumes from equipment toward a tree canopy.

## WILDLIFE PROTECTION

To comply with the City of Ottawa's "Protocol for wildlife protection during construction", as well as the "migratory birds convention act, 1994", construction is scheduled for September 2021 and no clearing of land will occur until sensitive periods for nesting birds and wildlife has passed.

## TREE PLANTING RECOMMENDATIONS

The area of disturbance caused by construction will require the removal of approximately 144 trees with a DBH of 10 cm and greater. The species represented in the tree inventory are not considered to be of any commercial value, and there are no specimen trees within these stands.

Planting sites are limited on this property since most of the unused areas of the site have been kept naturalized and forested. There are meadow areas that are absent of trees, but there is insufficient soil depth to support the root systems of large trees, and the surface rock would make digging planting holes unfeasible. Because of the relatively natural state of this property, any location that is suitable for a tree to exist is already occupied by one.

A total of approximately 106 Trees with a DBH of 10cm and greater, will be retained in zones 2 and 4. My recommendation is to carefully preserve the unaffected tree inventory zones, particularly zone 2. This southern most area of the property could be preserved as a mixed forest-meadow and continue to contribute significantly to the local wildlife and tree cover.

Additional plantings could be considered in landscaped areas around the back and sides of the new construction, once complete. Native species such as: sugar maple, red oak, bur oak, red pine, scots pine and black walnut would be suitable for these plantings and could bring some diversity to the property in terms of tree species.

Erik von Luczenbacher

ISA Certified Arborist # ON-0920A

MTCU Certificate # 401157769

RPF in Training

# Appendix













LEGEND	
	Property boundaries
	Drainage swale
	Tree inventory zone boundaries
	Tree inventory zone (tagged) boundaries



Site photos:











## Guidelines to Ensure Maximum Preservation of Trees Near Construction:

Fence off area around the CRZ of tree or grouping of trees to minimize soil compaction and preserve majority of root system. No one should enter fenced area, nor should any building materials be left within fence.

When digging within the CRZ of a tree, hand digging is preferable, but at the very least, any roots that must be cut are to be cut cleanly with a saw and not torn off.

Any cut roots must have cut ends wrapped in burlap or another absorbent material and kept damp while exposed to the air so that the cut ends do not dry out.

Under no circumstance should a tree be used as an anchor point for equipment and care should be taken not to damage the bark by hitting it with machinery or by other mechanical means.

If grade changes are to occur around any given tree, the entire critical root zone, from the stem to the drip line of the canopy should be preserved by means of a tree well, to ensure no grade change occurs within this area.

## Explanation of Table Headings:

### **Tree Species:**

For ease of use, tree species are listed by common names.

### **Tree Condition:**

P – poor condition, F- fair condition, G- good condition

### **D.B.H. :**

Diameter at breast height (1.2M from ground level)

## Glossary of Arboriculture terms:

**Canopy** – the upper branches of a tree that hold majority of leaves and buds, also called the Crown

**Cavity** – hole caused by wood decay fungus occurring on the main stem or limbs of tree

**Competition** – a struggle to obtain sunlight between two or more trees

**CRZ** – the critical root zone of a tree

**Dead wood** – dead branches and or limbs that occur in the canopy

**Decline** – used to describe a tree that is failing in health

**EAB** – acronym for the “Emerald ash borer” beetle

**Leader** – the main stem or main stems of a tree

**Mechanical wound** – wound caused by striking the tree with a foreign object, usually tearing off the bark layer

**Specimen tree** – a particularly strong, well structured and vigorous individual tree

## Glossary of scientific tree names:

Common Name	Scientific name
American elm	<i>Ulmus americana</i>
balsam fir	<i>Abies balsamia</i>
balsam poplar	<i>Populus balsamifera</i>
black ash	<i>Fraxinus nigra</i>
black walnut	<i>Juglans nigra</i>
bur oak	<i>Quercus macrocarpa</i>
ironwood	<i>Carpinus caroliniana</i>
red oak	<i>Quercus rubra</i>
red pine	<i>Pinus resinosa</i>
sugar maple	<i>Acer sachharum</i>
scots pine	<i>Pinus sylvestris</i>
trembling aspen	<i>Populus tremloides</i>
white cedar	<i>Thuja occidentalis</i>
white pine	<i>Pinus strobus</i>
white spruce	<i>Picea glauca</i>
common buckthorn	<i>Rhamnus cathartica</i>
poison ivy	<i>Toxicodendron radicans</i>
wild grape	<i>Vitis spp.</i>