

**Drawing:**

- All dimensions are in millimeters unless otherwise noted.
- This drawing is not to be scaled.
- Drawings refer to precast structure only.
- All tolerances shall be to CSA 23.4-16 Clause 12.

**Stone Strong Blocks - Concrete and Reinforcing**

Concrete:

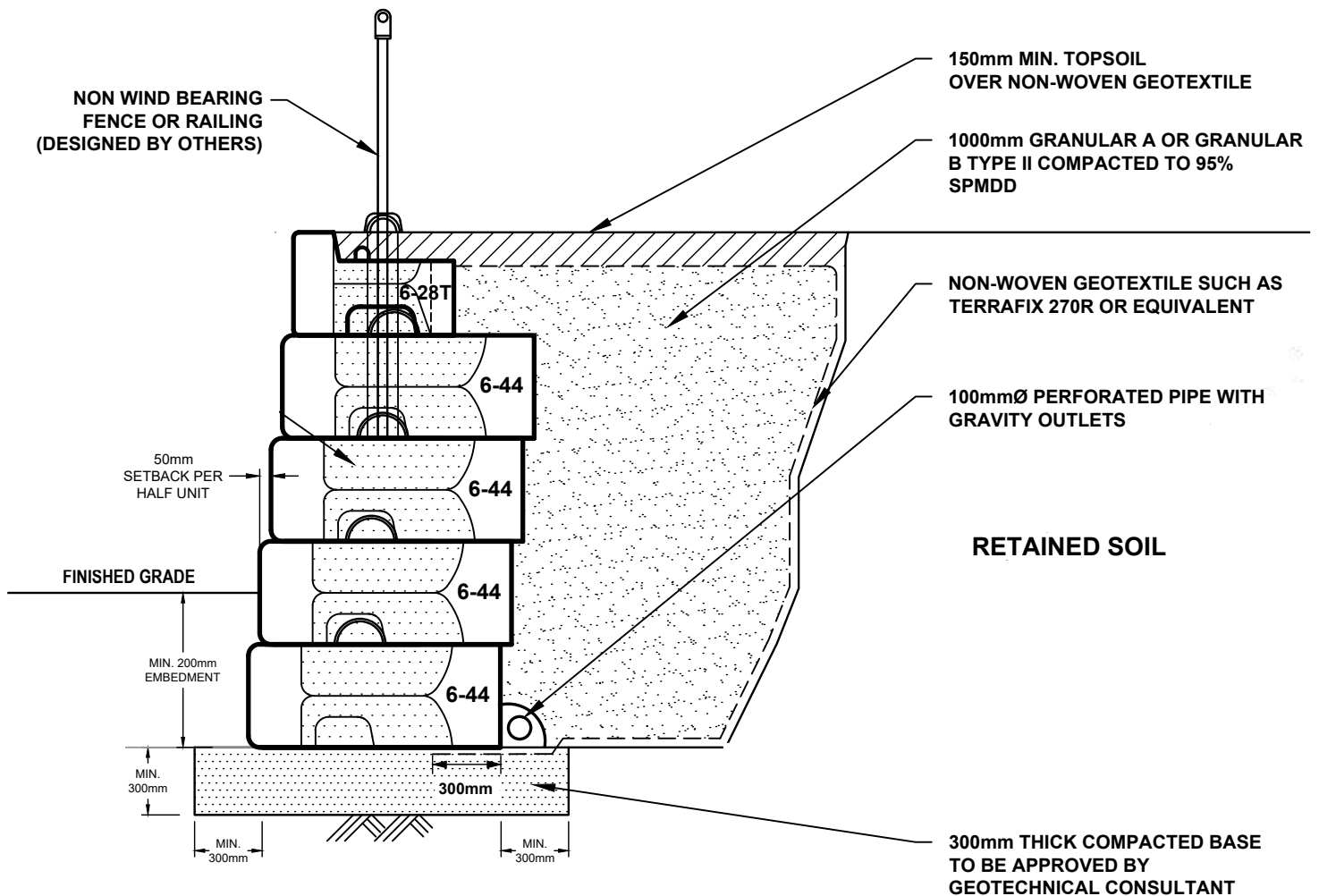
- Concrete strength: 40MPa @ 28 days.
- Air Content: 5-8%.
- Class of Exposure: C1.
- Stripping strength: 15MPa.

Reinforcing:

- Reinforcing Steel shall be CAN/CSA G30.18M Grade 400W.
- Welding of steel reinforcement to conform to CSA W186.
- No changes to steel reinforcement or Lift Anchors without Engineers approval.
- Secure Lift Anchors or Loops prior to concrete pour.

4		
3		
2		
1		
#:		DATE

**Typical Stone Strong Retaining Wall - Vertical**

**Drawing:**

- All dimensions are in millimeters unless otherwise noted.
- This drawing is not to be scaled.
- Drawings refer to precast structure only.
- All tolerances shall be to CSA 23.4-16 Clause 12.

**Stone Strong Blocks - Concrete and Reinforcing**

**Concrete:**

- Concrete strength: 40MPa @ 28 days.
- Air Content: 5-8%.
- Class of Exposure: C1.
- Stripping strength: 15MPa.

**Reinforcing:**

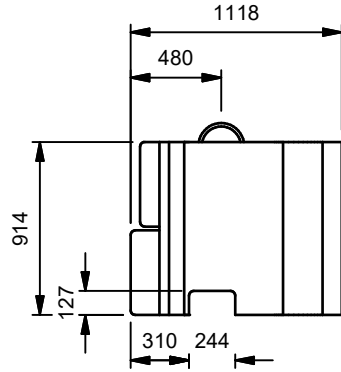
- Reinforcing Steel shall be CAN/CSA G30.18M Grade 400W.
- Welding of steel reinforcement to conform to CSA W186.
- No changes to steel reinforcement or Lift Anchors without Engineers approval.
- Secure Lift Anchors or Loops prior to concrete pour.

4		
3		
2		
1		
#:		DATE

**Typical Stone Strong Retaining Wall - Step Back**

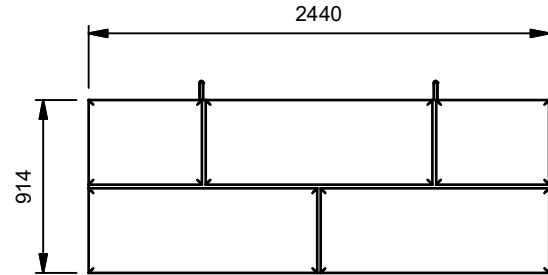

STENCIL

MCON OTT  
CSA A23.4  
24-44  
yyyy/mm/dd



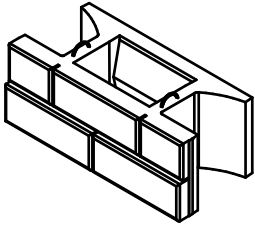
**SIDE-DIMENSIONS**

SCALE: 1:40



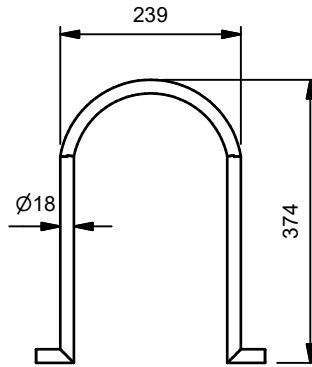
**FRONT-DIMENSIONS**

SCALE: 1:40



**ISOMETRIC VIEW**

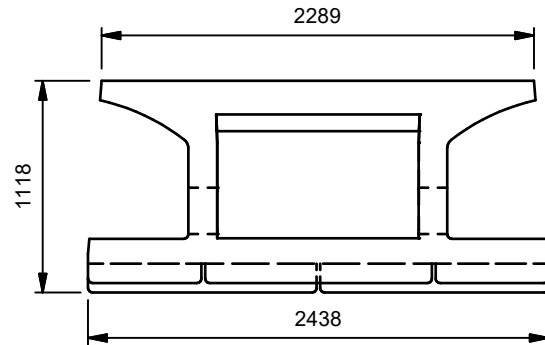
SCALE: 1:75



**18mm LIFTING LOOP**

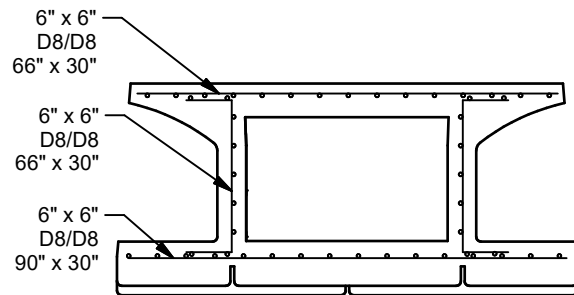
(Part# CSSA10-18)

SCALE: 1:10



**PLAN-DIMENSIONS**

SCALE: 1:40



**PLAN-REINFORCEMENT**

SCALE: 1:40

**Drawing:**

-All dimensions are in millimeters unless otherwise noted.  
-This drawing is not to be scaled.  
-Drawings refer to precast structure only.  
-All tolerances shall be to CSA 23.4-16 Clause 12.

**Concrete:**

-Concrete strength: 40MPa @ 28 days.  
-Air Content: 5-8%.  
-Class of Exposure: C1.  
-Stripping strength: 15MPa.

**Clear Cover**

-Minimum 50mm

**Reinforcing:**

-Reinforcing Steel shall be CAN/CSA G30.18M Grade 400W.  
-Welding of steel reinforcement to conform to CSA W186.  
-No changes to steel reinforcement or Lift Anchors without Engineers approval.  
-Secure Lift Anchors or Loops prior to concrete pour.

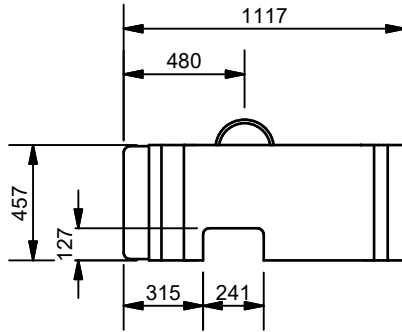
4		
3		
2	VOL., MASS, PRODUCT CODE UPDATED	SEPT. 19, 2022
1	INITIAL ISSUE (2021)	JAN. 29, 2021
#:	REVISION	DATE

**24-44 SF BLOCK**

2438L x 914H x 1118W

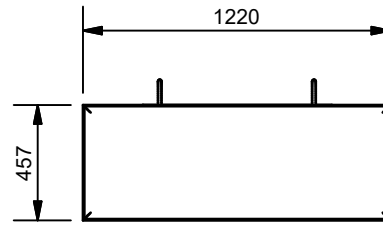
Mass: 2,683 kg	Code: SS2444
Volume: 1.166 m <sup>3</sup>	DWG #: 7.13
DWG By: C.H.	APPD By: B.M.
Path: N:\Products\Stone Strong	

STENCIL
MCON OTT
CSA A23.4
06-44
yyyy/mm/dd



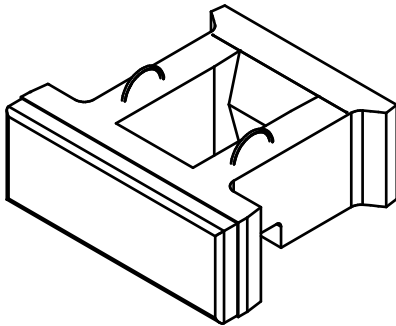
**SIDE-DIMENSIONS**

SCALE: 1:30



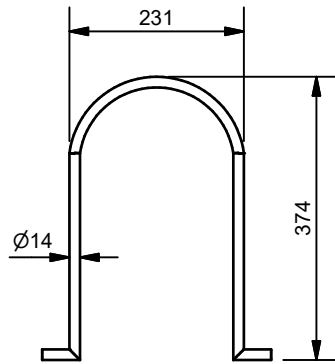
**FRONT-DIMENSIONS**

SCALE: 1:30



**ISOMETRIC VIEW**

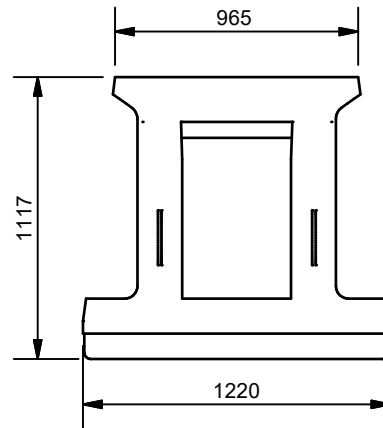
SCALE: 1:30



**14mm LIFTING LOOP**

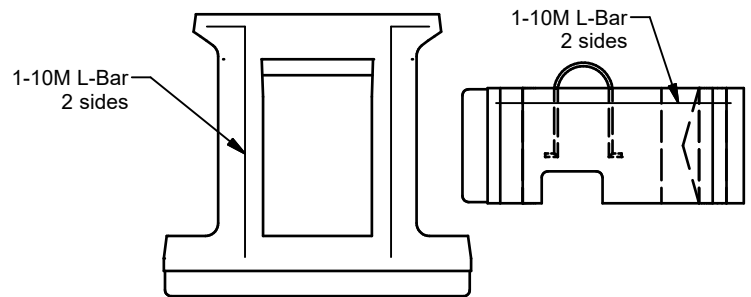
(Part# CSSA10-14)

SCALE: 1:10



**PLAN-DIMENSIONS**

SCALE: 1:30



**PLAN AND SIDE-REINFORCEMENT**

SCALE: 1:30

**Drawing:**

-All dimensions are in millimeters unless otherwise noted.  
-This drawing is not to be scaled.  
-Drawings refer to precast structure only.  
-All tolerances shall be to CSA 23.4-16 Clause 12.

**Concrete:**

-Concrete strength: 40MPa @ 28 days.  
-Air Content: 5-8%.  
-Class of Exposure: C1.  
-Stripping strength: 15MPa.

**Clear Cover**

-Minimum 50mm

**Reinforcing:**

-Reinforcing Steel shall be CAN/CSA G30.18M Grade 400W.  
-Welding of steel reinforcement to conform to CSA W186.  
-No changes to steel reinforcement or Lift Anchors without Engineers approval.  
-Secure Lift Anchors or Loops prior to concrete pour.

4		
3		
2	VOL., MASS, M CON CODE UPDATED	SEPT. 19, 2022
1	INITIAL ISSUE (2021)	JAN. 27, 2021
#:	REVISION	DATE

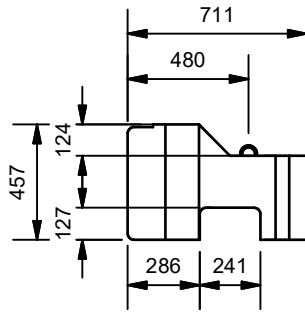
**6 SF BLOCK**

1220L x 457H x 1117W

Mass: 720 kg	Code: SS0644
Volume: 0.313 m <sup>3</sup>	DWG #: 7.8
DWG By: C.H.	APPD By: B.M.
Path: N:\Products\Stone Strong	

STENCIL

MCON OTT  
CSA A23.4  
06-28T  
yyyy/mm/dd



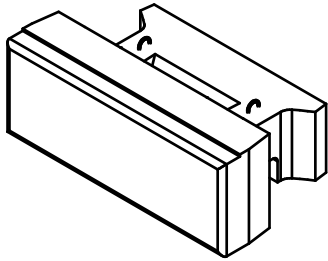
**SIDE-DIMENSIONS**

SCALE: 1:30



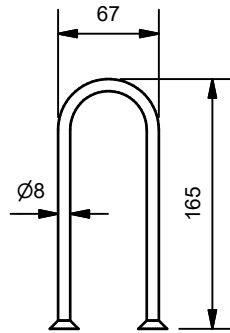
**FRONT-DIMENSIONS**

SCALE: 1:30



**ISOMETRIC VIEW**

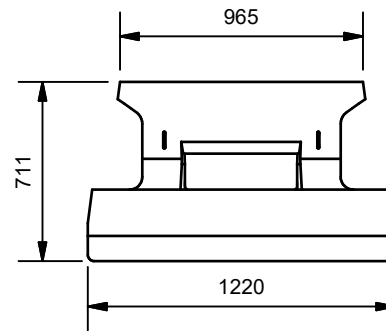
SCALE: 1:30



**6.5" LIFTING LOOP**

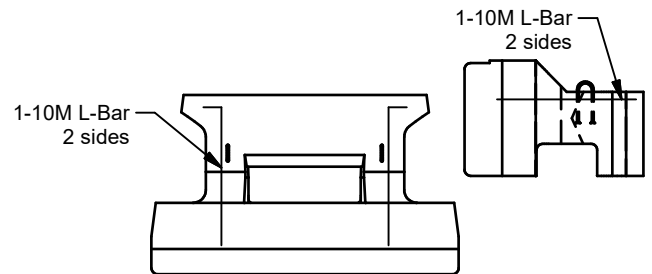
(Part# LRA516612G)

SCALE: 1:5



**PLAN-DIMENSIONS**

SCALE: 1:30



**PLAN AND SIDE-REINFORCEMENT**

SCALE: 1:30

**Drawing:**

- All dimensions are in millimeters unless otherwise noted.
- This drawing is not to be scaled.
- Drawings refer to precast structure only.
- All tolerances shall be to CSA 23.4-16 Clause 12.

**Concrete:**

- Concrete strength: 40MPa @ 28 days.
- Air Content: 5-8%.
- Class of Exposure: C1.
- Stripping strength: 15MPa.

**Clear Cover**

- Minimum 50mm

**Reinforcing:**

- Reinforcing Steel shall be CAN/CSA G30.18M Grade 400W.
- Welding of steel reinforcement to conform to CSA W186.
- No changes to steel reinforcement or Lift Anchors without Engineers approval.
- Secure Lift Anchors or Loops prior to concrete pour.

4		
3		
2	VOL., MASS, M CON CODE UPDATED	SEPT. 19, 2022
1	INITIAL ISSUE (2021)	JAN. 27, 2021
#:	REVISION	DATE

**6 SF BLOCK - TOP BLOCK**

1220L x 457H x 711W

Mass: 545 kg	Code: SS0628T
Volume: 0.237 m <sup>3</sup>	DWG #: 7.7
DWG By: C.H.	APPD By: B.M.
Path: N:\Products\Stone Strong	