



PATERSON GROUP

Consulting Engineers

9 Auriga Drive
Ottawa, Ontario
K2E 7T9

Tel: (613) 226-7381

Geotechnical Engineering
Environmental Engineering
Hydrogeology
Materials Testing
Building Science
Rural Development Design
Temporary Shoring Design
Retaining Wall Design
Noise and Vibration Studies

November 24, 2025
File: PE4710-LET.05

Minto Communities – Canada

200 – 180 Kent Street
Ottawa, ON
K1P 0B6

Attention: **Mr. Kevin Harper**

patersongroup.ca

Subject: **Phase I-Environmental Site Assessment Update
178, 180, 182 and 200 Isabella Street
Ottawa, Ontario**

Dear Sir,

Further to your request, Paterson Group (Paterson) carried out a Phase I Environmental Site Assessment (ESA) Update for the aforementioned property. This report updates part of the Phase I ESA titled “*Phase I Environmental Site Assessment, 178, 180, 182 and 200 Isabella Street and 205 Pretoria Avenue, Ottawa, Ontario*” dated August 1, 2023.

This report is intended to meet the requirements of a Phase I ESA Update, as per the MECP Standard O.Reg. 153/04, as amended, under the Environmental Protection Act. This report is to be read in conjunction with the 2023 Phase I ESA Update report.

Site Information

The subject site, addressed 178, 180, 182 and 200 Isabella Street, herein referred to as the Phase I Property, is situated on the south side of Isabella Street, approximately 45 m east of Bank Street, in the City of Ottawa, Ontario. The Phase I Property currently exists as vacant land that is situated in a mixed-use urban area that is serviced by the municipality. The property encompasses an area of approximately 0.23 hectares.



Records Review

Phase I ESA Study Area Determination

A radius of approximately 250m was determined to be appropriate as a Phase I ESA Study Area for this assignment. Properties outside the 250m radius are not considered to have the potential to impact the Phase I Property, based on their separation distance.

Previous Engineering Reports

- ❑ “Phase I Environmental Site Assessment, 178, 180, 182 and 200 Isabella Street, Ottawa, Ontario” prepared by Paterson Group, dated October 24, 2016.

Based on the aforementioned Phase I-ESA report, the subject site was first developed with residential dwellings in the 1890s. Neighbouring land use in the area consisted primarily of residential dwellings. A tinsmith was identified at the rear of 186 Isabella Street in the 1956 Fire Insurance Plans, and a heating service contractor was identified in the City Directories and Historic Land Use Inventory on 182 Isabella Street. These on-site Potentially Contaminating Activities were identified as Areas of Potential Environmental Concern. To the north, across Isabella Street, a former rail line and associated buildings were identified on the FIPs. These PCAs were also considered to represent APECs on the north-western portion of the Phase I Property. The buildings on the subject site were demolished early in 2016.

Following the historical review, a site visit was conducted. No potential environmental concerns were noted with the use of the site or adjacent lands. Based on the historic uses of the Phase I Property and railway lands to the north, a Phase II-ESA was recommended.

- ❑ “Phase II Environmental Site Assessment, 178, 180, 182 and 200 Isabella Street, Ottawa, Ontario” prepared by Paterson Group, dated November 7, 2016.

Based on the results of the Phase I-ESA report, a Phase II ESA was carried out for the subject property. Three (3) boreholes were placed on the Phase II Property and instrumented with groundwater monitoring wells. Site soils consisted of a layer of fill material, including demolition debris in former building locations, which was underlain by native silty clay. Based on the screening results, samples were selected for testing of metals and/or BTEX/PHC parameters. Based on the analytical results, the soil on the subject site was in compliance with the MECP Table 3 Commercial and Residential standards.

Groundwater samples were collected from the monitoring wells and analyzed for BTEX/PHCs and PAHs. No parameters were detected in the groundwater samples analysed. The analytical results complied with the MECP Table 3 Residential standards.



- ❑ “Phase I Environmental Site Assessment Update, 178, 180, 182 and 200 Isabella Street and 205 Pretoria Avenue, Ottawa, Ontario” prepared by Paterson Group, dated September 3, 2019.

A Phase I ESA Update was completed in 2019 which included an updated review of available information and a site visit. Based on the findings, the former on-site PCAs (former tinsmith at 186 Isabella Street, and former fuel business at 182 Isabella Street) were considered to represent APECs as well as fill material of unknown quality that was identified during the 2016 subsurface program, and the use of road salt on the parking lots of the Phase I Property.

An updated Phase II ESA was recommended to address the aforementioned APECs on the Phase I Property.

- ❑ “Phase II Environmental Site Assessment, 178, 180, 182 and 200 Isabella Street and 205 Pretoria Avenue, Ottawa, Ontario” prepared by Paterson Group, dated October 10, 2019.

The subsurface investigation for the 2019 Phase II ESA included the drilling of five boreholes (BH1-19 to BH5-19) and the installation of two groundwater monitoring wells (BH2-19 and BH3-19) to evaluate soil and groundwater quality at the Phase II Property. Site soils consisted of a layer of fill material, including demolition debris at former building locations, underlain by native silty clay.

Soil samples were submitted for BTEX, PHCs, PAHs and/or metals as well as EC/SAR and pH. BTEX and PHCs complied with the selected MECP Table 3 Residential Standards. Metals and PAHs were in excess of the selected standards in the fill material.

Groundwater samples were collected on September 12, 2019, from BH1 (analyzed for PHCs F1–F4 and metals, including Hg and Cr VI) and BH2 (analyzed for PAHs). Additional samples were collected on September 17, 2019, from BH2-19 (analyzed for sodium and chloride) and BH3-19 (analyzed for BTEX and PHCs). All analyzed parameters met the selected MECP Table 3 Standards, except for PHC F2 at BH1, which exceeded the standard.

A follow-up groundwater sample from BH1 was collected on September 24, 2019, and analyzed for PHCs F2–F4, with all results in compliance with the MECP Table 3 Standards.

Based on the analytical results, the contamination appears to be confined to the upper fill layer. It was recommended that this fill material be disposed of at an approved waste disposal facility. The removal process should be monitored to ensure proper segregation



and to confirm that the remediation effectively addresses the contaminated material on the property.

- ❑ “Phase I Environmental Site Assessment Update, 178, 180, 182 and 200 Isabella Street and 205 Pretoria Avenue, Ottawa, Ontario” prepared by Paterson Group, dated August 1, 2023.

A Phase I ESA Update was completed in 2023, which included a review of updated records and a site inspection. An ERIS report was obtained and reviewed as part of this update. Based on the site visit and updated information, no changes were noted to the Phase I Property or the surrounding Study Area. The findings of the 2023 update identified no new Potentially Contaminating Activities (PCAs) or Areas of Potential Environmental Concern (APECs) on the Phase I Property.

- ❑ “Phase II Environmental Site Assessment Update, 178, 180, 182 and 200 Isabella Street and 205 Pretoria Avenue, Ottawa, Ontario” prepared by Paterson Group, dated August 4, 2023.

As part of the 2023 Phase II ESA, one groundwater sample was collected from BH1 on July 21, 2023, and submitted for laboratory analysis of BTEX and PHCs (F1–F4). No BTEX or PHC concentrations were detected in the sample, and the results comply with MECP Table 3 Standards. No soil testing was conducted as part of the 2023 Phase II ESA.

The recommendations from the 2019 Phase II ESA remain unchanged. Contaminated material is considered to be confined to the upper fill layer, which should be disposed of at an approved waste disposal facility. The removal process should be monitored to ensure proper segregation and to confirm that the remediation effectively addresses the contaminated material on the property.

It was also recommended that BH1 be re-sampled to confirm the latest groundwater quality for the purpose of filing a Record of Site Condition (RSC) in the future.

Ministry of the Environment, Conservation and Parks Freedom of Information Request

MECP Submissions

A request was submitted to the MECP FOI office for information with respect to reports related to environmental conditions for the Phase I Property. A response from the MECP had not been received prior to the issuance of this report. A copy of the response will be forwarded to the client if it contains any pertinent information.





MECP Incident Reports

A request was submitted to the MECP FOI office for information with respect to records concerning environmental incidents, orders, offences, spills, discharges of contaminants, inspections maintained by the MECP for the Phase I Property or neighbouring properties. A response from the MECP had not been received prior to the issuance of this report. A copy of the response will be forwarded to the client if it contains any pertinent information.

MECP Instruments

A request was submitted to the MECP Freedom of Information (FOI) office for information with respect to certificates of approval, permits to take water, certificates of property use or any other similar MECP issued instruments for the site. A response from the MECP had not been received prior to the issuance of this report. A copy of the response will be forwarded to the client if it contains any pertinent information.

MECP Waste Management Records

A request was submitted to the MECP FOI office for information with respect to waste management records. A response from the MECP had not been received prior to the issuance of this report. A copy of the response will be forwarded to the client if it contains any pertinent information.

City of Ottawa Historical Land Use Inventory (HLUI)

A request for a search of the City of Ottawa's Historical Land Use Inventory (HLUI) database was submitted to the City of Ottawa during the 2023 Phase I ESA. A response was received on August 31, 2023, and was reviewed as part of the current Phase I ESA Update. The HLUI response indicated that the city's Environmental Remediation Unit holds the 2019 Phase I ESA Update and Phase II ESA (Paterson Group) for the Phase I Property. A heating equipment industry was identified at 182 Isabella Street (already a PCA). Additionally, records for 200 Isabella Street were identified between 2001 to 2012, reflecting its former uses as office space, a photography studio, a lumber and building materials wholesaler, and a tool and hardware wholesaler. These former uses of 200 Isabella Street as office space or retail spaces are not considered Potentially Contaminating Activities (PCAs). No new PCAs were identified on the Phase I Property based on the HLUI review.

The review of HLUI response identified the following PCAs in the Phase I Study Area that were not identified in previous Phase I ESAs:

- 136 Catherine Street, approximately 75m north of the Phase I Property – former automotive service garage and retail fuel outlet



- 519 Bank Street, approximately 115m north of the Phase I Property – former printers
- 612 Bank Street, approximately 160m south of the Phase I Property – former boat repair shop
- 23 Chamberlain Avenue, approximately 100m west of the Phase I Property – former automotive wrecking
- 30 Chamberlain Avenue, approximately 180m west of the Phase I Property – former dry cleaners
- 41-43 Chamberlain Avenue, approximately 180m west of the Phase I Property – former machine shop
- 270 Catherine Street, approximately 210m west of the Phase I Property – former retail fuel outlet and automotive service garage
- 473 Bank Street, approximately 230m north of the Phase I Property – former printers
- 255 Argyle Avenue, approximately 230m north of the Phase I Property – former dry cleaners
- 640 Bank Street, approximately 240m south of the Phase I Property – former retail fuel outlet and automotive service garage

Based on the separation distances with respect to the Phase I Property (minimum 75m), these identified PCAs are not considered to result in an APEC on the Phase I Property.

A copy of the HLUI response letter, map and tables are provided in Appendix.

Technical Standards and Safety Authority (TSSA)

The TSSA, Fuels Safety Branch in Toronto, was contacted electronically on November 5, 2025, to inquire about current and former underground storage tanks for the site and neighbouring properties. No records are listed in the TSSA registry for the subject site or neighbouring properties. The response from the TSSA is appended to this report.

Aerial Photographs

The most recent aerial image included in the 2023 Phase I ESA report was from 2021. For this update, an aerial image from 2025 (Google Earth) was reviewed. Based on the 2025 aerial imagery, the Phase I Property consists of vacant land.

No significant changes are observed compared to the 2021 aerial image on the Phase I Property and surrounding properties. A copy of the 2025 aerial imagery is appended to this letter.





Site Reconnaissance

A site visit was conducted on November 6, 2025, to assess the subject site and uses of the neighbouring properties within the Phase I Study Area from publicly accessible land.

Subject Site Assessment

The Phase I Property consists of vacant land, with portions covered by grass and others by gravel.

No evidence of spills or staining was observed during the site visit. No ASTs or evidence of USTs was observed on the Phase I Property. No transformers or sources of PCBs were observed on the Phase I Property.

No evidence of railway lines was noted on the Phase I property. No concerns with respect to chemical storage or waste disposal were observed on the Phase I Property. There were no unidentified substances observed on the exterior of the Phase I Property.

No potential environmental concerns were identified at the time of the site visit.

Neighbouring Land Use

Neighbouring land use in the Phase I Study Area generally consists of residential and commercial land uses, with some parkland. No previously unidentified PCAs were identified with the current use of the neighbouring properties in the Phase I Study Area.

Updated Conceptual Site Model

Based on the records update, seven new PCAs were identified in the Phase I Study Area. Based on the separation distances with respect to the Phase I Property (minimum 75m), these identified PCAs are not considered to result in an APEC on the Phase I Property. No previously unidentified PCAs were identified during the site visit. No changes to the Phase I Property were noted.

Current land use and identified PCAs in the Phase I Study Area are illustrated on Drawing PE4710-2R – Surrounding Land Use Plan.

Conclusions

Based on the results of this Phase I ESA Update, **it is our opinion that there are no new PCAs that would result in additional APECs on the Phase I Property.**



Statement of Limitations

This Phase I - Environmental Site Assessment Update report has been prepared under the supervision of a Qualified Person in general accordance with the agreed scope-of-work and O.Reg. 153/04. The conclusions presented herein are based on information gathered from a historical review and field inspection program.

The findings of the Phase I ESA Update are based on a review of readily available geological, historical and regulatory information and a cursory review made at the time of the field assessment. The historical research relies on information supplied by others, such as local, provincial, and federal agencies and was limited within the scope-of-work, time, and budget of the project herein.

Should any conditions be encountered at the Phase I Property and/or historical information that differ from our findings, we request that we be notified immediately in order to allow for a reassessment.

This report was prepared for the sole use of Minto Communities. Permission and notification from Minto Communities and Paterson Group will be required to release this report to any other party.

Paterson Group Inc.

Kuldeep Panchal, M. Eng.

Mark D'Arcy, P.Eng., QP_{ESA}



Report Distribution:

- ☐ Minto Communities
- ☐ Paterson Group



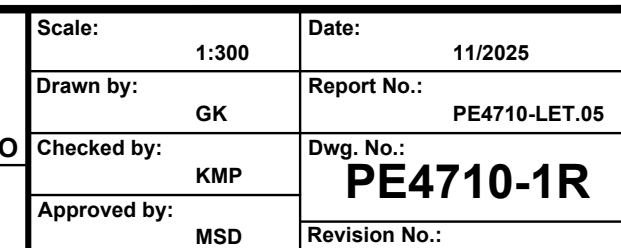
Attachments:

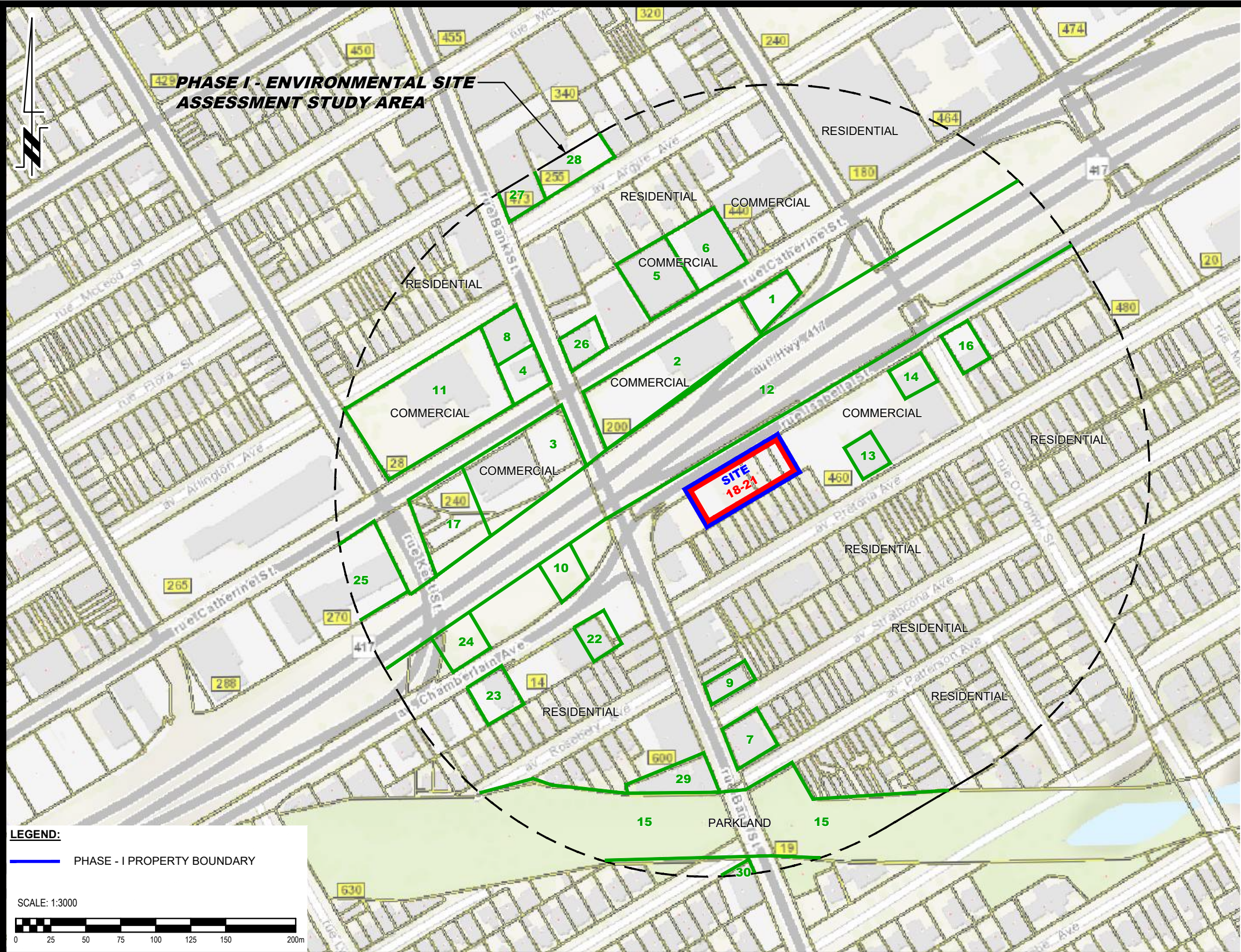
- ☐ Figure 1 - Key Plan
- ☐ Drawing PE4710-1R – Site Plan
- ☐ Drawing PE4710-2R – Surrounding Land Use Plan
- ☐ 2025 Aerial Imagery
- ☐ TSSA Correspondence
- ☐ MECP FOI
- ☐ HLUI Response





FIGURE 1
KEY PLAN





POTENTIALLY CONTAMINATING ACTIVITIES :

ID #	PCA ID	ADDRESS	DESCRIPTION
1	28	210 CATHERINE ST.	FORMER RETAIL FUEL OUTLET
2	52	533 BANK ST. & 212 CATHERINE ST	FORMER CONTRACTOR YARD
3	28	234 CATHERINE ST.	FORMER SERVICE STATION
4	28, 52	512 BANK STREET	EXISTING RETAIL FUEL OUTLET AND FORMER USED CAR LOT
5	31	203 CATHERINE ST.	FORMER PRINTER
6	31	141 CATHERINE ST.	FORMER PRINTER
7.	28	617 BANK STREET	FORMER RETAIL FUEL OUTLET
8.	52	512 BANK STREET	FORMER SERVICE GARAGE
9.	37	601 BANK STREET	FORMER CLEANERS AND DRYERS
10.	52	556 BANK STREET	FORMER CONTRACTOR YARD
11.	52	233B CATHERINE ST.	FORMER AUTO BODY REPAIRS
12.	46	FORMER RAIL LINE	
13.	37, 52	158 ISABELLA ST.	FORMER WAREHOUSE, CLEANERS AND AUTOMOTIVE GARAGE
14.	N/A	134 ISABELLA ST.	FORMER COAL SHED
15.	58	FORMER LANDFILL	
16.	10	120 ISABELLA ST.	AUTO BODY SHOP
17.	N/A	42 CATHERINE ST.	FORMER BUILDER SUPPLY WAREHOUSE
18.	34	186 ISABELLA ST.	FORMER TINSMITH
19.	N/A	182 ISABELLA ST.	FORMER HARRIS FUELS - GULF HOME COMFORT
20.	30	FILL MATERIAL OF UNKNOWN QUALITY	
21.	N/A	POTENTIAL DE-ICING	
22.	52	23 CHAMBERLAIN AVE.	FORMER AUTOMOTIVE WRECKING
23.	37	30 CHAMBERLAIN AVE.	FORMER DRY CLEANERS
24.	33	41-43 CHAMBERLAIN AVE.	FORMER CONTRACTOR YARD
25.	28, 52	270 CATHERINE ST.	FORMER RETAIL FUEL OUTLET AND AUTOMOTIVE SERVICE GARAGE
26.	31	519 BANK STREET	FORMER PRINTERS
27.	31	473 BANK STREET	FORMER PRINTERS
28.	37	255 ARGYLE AVENUE	FORMER DRY CLEANERS
29.	27	612 BANK STREET	FORMER BOAT REPAIR SHOP
30.	28, 52	640 BANK STREET	FORMER RETAIL FUEL OUTLET AND AUTOMOTIVE SERVICE GARAGE



AERIAL PHOTOGRAPH
2025



RE: PE4710-Records Search Request

From Public Information Services <publicinformationsservices@tssa.org>

Date Wed 11/5/2025 9:39 AM

To Kuldeep Panchal <KPanchal@patersongroup.ca>

External Email: Do not click on links or open attachments unless you trust the sender.

Hello ,

NO RECORDS FOUND IN CURRENT DATABASE:

- We confirm that there are NO **fuels records** in our database at the subject address(es).

This is not a confirmation that there are no records in the archives. For a further search in our archives, please go to the [TSSA Client Portal](#) to complete an Application for Release of Public Information.

Please refer to [Training_\(tssa.org\)](#) for instructions on how to use the portal. Please refer to [How to Submit a Public Information Request \(tssa.org\)](#) for instructions.

The associated fee must be paid via credit card (Visa or MasterCard).

Once all steps have been successfully completed you will receive your payment receipt via email.

TSSA does not make any representations or warranties with respect to the accuracy or completeness of any records released. The requestor assumes all risk in using or relying on the information provided.

If you have any questions or concerns, please do not hesitate to contact our Public Information Release team at publicinformationsservices@tssa.org.

Kind regards,



Slavka Zahrebelny | Public Information & Records Agent

Public Information

345 Carlingview Drive

Toronto, Ontario M9W 6N9

Tel: +1 416-734-3585 | Fax: +1 416-734-6242 | E-Mail: szahrebelny@tssa.org

www.tssa.org



**Winner of 2025 5-Star Safety Cultures Award**

From: Kuldeep Panchal
<KPanchal@patersongroup.ca>

Sent: November 5, 2025

8:58 AM

To: Public Information Services <publicinformationsservices@tssa.org>

Subject: PE4710-Records Search Request

[CAUTION]: THIS EMAIL ORIGINATED OUTSIDE THE ORGANISATION.

PLEASE DO NOT CLICK LINKS OR OPEN ATTACHMENTS UNLESS YOU RECOGNISE THE SOURCE OF THIS EMAIL AND KNOW THE CONTENT IS SAFE.

Hello,

Could you please complete a search of your records for **underground/aboveground storage tanks** for the following addresses in Ottawa, Ontario:

Isabella Street : 178, 180, 182, 200, 210

O'Connor Street : 460

Pretoria Avenue: 183, 187, 195, 209

Best Regards,

**KULDEEP PANCHAL**

Junior Environmental Scientist

Environmental Division

TEL: (613) 226-7381 ext.103

DIRECT: (613) 701-6276

9 AURIGA DRIVE

OTTAWA ON K2E 7T9

patersongroup.ca

TEMPORARY SHORING DESIGN SERVICES ARE NOW AVAILABLE, PLEASE CONTACT US TO SEE HOW WE CAN HELP!

NEW OFFICE OPEN IN THE GREATER TORONTO AREA WITH OUR EXPANSIVE LIST OF SERVICES NOW AVAILABLE!

This electronic message and any attached documents are intended only for the named recipients. This communication from the Technical Standards and Safety Authority may contain information that is privileged, confidential or otherwise protected from disclosure and it must not be disclosed, copied, forwarded or distributed without authorization. If you have received this message in error, please notify the sender immediately and delete the original message.



MECP FOI A-2025-07533 / Your Reference PE4710 – Acknowledgement

From FOI (MECP) <foi.mecp@ontario.ca>

Date Tue 11/4/2025 2:40 PM

To Kuldeep Panchal <KPanchal@patersongroup.ca>

External Email: Do not click on links or open attachments unless you trust the sender.

Dear Kuldeep Panchal,

The Ministry is in receipt of your request made pursuant to the Freedom of Information and Protection of Privacy Act along with your payment of \$5.00 (non-refundable application fee). **The search will be conducted on the following:**

178 Isabella Street, Ottawa

180 Isabella Street, Ottawa

182 Isabella Street, Ottawa

200 Isabella Street, Ottawa

Timeframe: January 1, 1900 to November 3, 2025

If there is any discrepancy, please contact us immediately.

Please note the file number that has been assigned to your request. This number should be referred to in all future communications with our office.

Your request is being processed and our office will be in touch.

Yours truly,
Access and Privacy Office
Ministry of the Environment, Conservation and Parks



From: Public Secure - Please Do Not Reply (MPBSDP) <noreply@ontario.ca>

Sent: November 4, 2025 12:06 PM

To: FOI (MECP) <foi.mecp@ontario.ca>

Subject: FOI eRequest – Panchal - 20251104120513023

The submission ID of this application is: 20251104120513023

Date Submitted: November 04, 2025 at 12:05 PM

A copy of the FOI eRequest is attached.

August 31, 2023

Mandy Witteman
Paterson Group

Sent via email MWitteman@patersongroup.ca

Dear Mandy,

Re: Information Request
178-200 Isabella Street, Ottawa, Ontario ("Subject Properties")

Internal Department Circulation:

The Planning, Infrastructure and Economic Development Department has the following information in response to your request for information regarding the Subject Property:

- **Environmental Remediation Unit:** The City's Environmental Remediation Unit has environmental records on file pertaining to the subject property noted above either directly on or adjacent to the subject property. To submit requests for information under the Municipal Freedom of Information and Protection of Privacy Act, please visit <https://ottawa.ca/en/city-hall/open-transparent-andaccountable-government/access-information-and-protection-privacy/accessinformation>
 - **Comment:** The Environmental Remediation Unit has a Phase I Environmental Site Assessment Update and a Phase II ESA (Paterson, 2019) for these properties.
- **Ottawa Public Health - Environmental Health:** all public inspection results are publicly available on the Ottawa Public Health website:
<https://www.ottawapublichealth.ca/en/public-health-services/public-health-inspections.aspx>
- **Sewer Use Program:** No records for this property.
- **Solid Waste Services:** No records for this property.

Documents Provided:

HLUI Summary Report and HLUI Map

The HLUI Summary Report Excel spreadsheet identifies HLUI area, point and line features within 250 metres of the Subject Property, as shown on the provided HLUI Map

PDF. Within 500 metres of the Subject Property, landfills and Environmental Risk Management Area (ERMA) are also identified if applicable.

For more information on how to interpret the HLUI data identified in the attached excel sheet ('ADDRESS – HLUI Summary report.xlsx'), please refer to the [Overview and User Guide](#)."

Additional information may be obtained by contacting:

Ontario's Environmental Registry

The Environmental Registry found at <https://ero.ontario.ca/> contains "public notices" about environmental matters being proposed by all government ministries covered by the Environmental Bill of Rights. The public notices may contain information about proposed new laws, regulations, policies and programs or about proposals to change or eliminate existing ones. By using key words i.e. name of proponent/owner and the address one can ascertain if there is any information on the proponent and address under the following categories: Ministry, keywords, notice types, Notice Status, Acts, Instruments and published date (all years).

The Ontario Land Registry Office

Registration of real property is recorded in the Ontario Land Registry Office through the Land Titles Act or the Registry Act. Documents relating to title and other agreements that may affect your property are available to the public for a fee. It is recommended that a property search at the Land Registry Office be included in any investigation as to the historic use of your property. The City of Ottawa cannot comment on any documents to which it is not a party.

Court House
161 Elgin Street 4th Floor
Ottawa ON K2P 2K1
Tel: (613) 239-1230
Fax: (613) 239-1422

Ottawa Public Health

Ottawa Public Health inspects many different types of establishments. To view inspection results, please visit the Ottawa Public Health website: [Public Health Inspections - Ottawa Public Health](#)

Please note that Ottawa Public Health is not the lead agency on land use contamination in the City of Ottawa – contact the Ministry of Environment Conservation and Parks (MECP) for further information.

Please note, as per the HLUI Disclaimer, that the information contained in the HLUI database has been compiled from publicly available records and other sources of

information. The HLUI may contain erroneous information given that the records used as sources of information may be flawed. For instance, changes in municipal addresses over time may introduce error. Accordingly, all information from the HLUI database is provided on an “as is” basis with no representation or warranty by the City with respect to the information’s accuracy or exhaustiveness in responding to the request.

Furthermore, the HLUI database and the results of this search in no way confirm the presence or absence of contamination or pollution of any kind. This information is provided on the assumption that it will not be relied upon by any person for any purpose whatsoever. The City of Ottawa denies all liability to any persons attempting to rely on any information provided from the HLUI database.

Please note that in responding to your request, the City of Ottawa does not guarantee or comment on the environmental condition of the Subject Property. You may wish to contact the Ontario Ministry of Environment and Climate Change for additional information.

If you have any further questions or comments, please contact HLUI@ottawa.ca.

Sincerely,

Samantha Gatchene, MCIP, RPP
Planner

Per:

Michael Boughton, MCIP, RPP
Senior Planner
Development Review East
Planning Services
Planning, Infrastructure and Economic Development Department

MB / SB






Enclosures: (2)

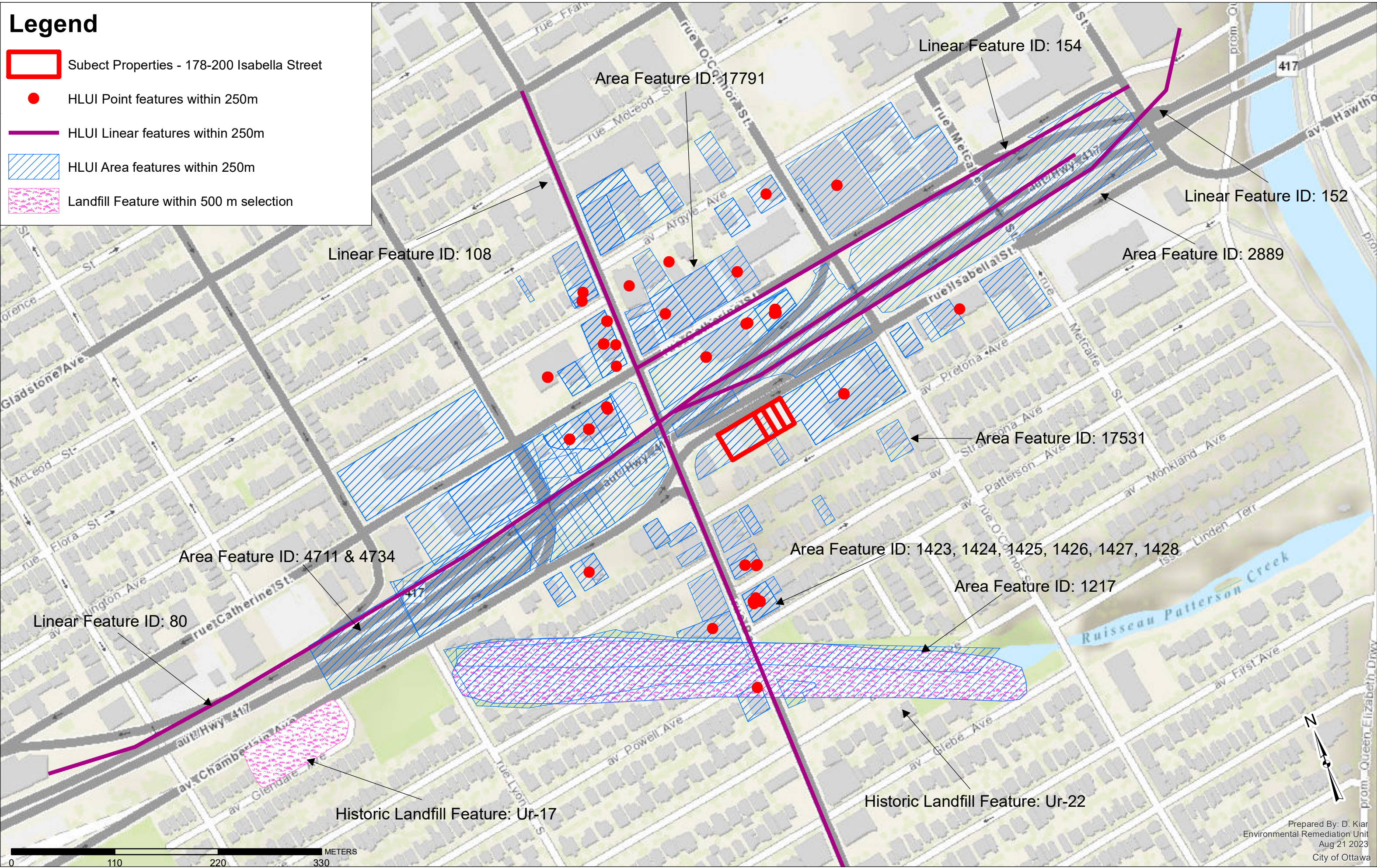
1. HLUI Map
2. HLUI Summary Report

cc: File no. D06-03-23-0117

HISTORIC LAND USE INVENTORY (HLUI) - REPORT REFERENCE MAP

Legend

-  Subect Properties - 178-200 Isabella Street
-  HLUI Point features within 250m
-  HLUI Linear features within 250m
-  HLUI Area features within 250m
-  Landfill Feature within 500 m selection



OBJECTID	ACTIVITY_NAME	FACILITY_TYPE	SOURCE_UPDATE_SORTED	QAQC	YEAR	YEAR_1	ST_NUM	ST_NAME	ST_SUFFIX	ST_DIR	MUNICIPALITY	ST_NUM2017	ST_NAME2017	ST_SUFFIX2017	ST_DIR2017	POSTAL_CODE2017	PIN2017	MUNICIPALITY2017	NAICS	SIC	COMMENTS	STORAGE_TANK	Shape_Length	Shape_Area	
104	CABU PUBLICATIONS INC	Information and cultural industries	2006-ES	1	2006		420	O'CONNOR	ST			420	O'CONNOR	ST		K2P1W4	41230012	OLD OTTAWA	511120					122.0808985	931.3896724
105	FIRST COMM INC	Other services (except public administration)	2006-ES	1	2006		270	CATHERINE	ST			270	CATHERINE	ST		K1R5T3	41220518	OLD OTTAWA	811310					257.9496238	4070.208576
106	OTTAWA BUS CENTRAL STATION INC	Transportation and warehousing	2012-ES	1	2012		265	CATHERINE	ST			270	CATHERINE	ST		K1R5T3	41220518	OLD OTTAWA	488490					257.9496238	4070.208576
255	CANADA CHINA NEWS THE	Information and cultural industries	2001-ES	1	2001		240	CATHERINE	ST			240	CATHERINE	ST		K2P2G8	41220636	OLD OTTAWA	511110					228.0278517	2778.32512
256	SILVER AUTOMOTIVE	Other services (except public administration)	2001-ES	1	2001		512	BANK	ST			512	BANK	ST		K2P1Z6	41220200	OLD OTTAWA	811111					183.1898004	1826.93745
258	GRAY LINE TOURS	Transportation and warehousing	2006-ES	1	2006		265	CATHERINE	ST			265	CATHERINE	ST		K1R7S5	41220408	OLD OTTAWA	487110					463.2067608	10345.60225
259	SYSTEMES DE CONTROLE IDEAL INC	Manufacturing	2012-ES	1	2012		265	CATHERINE	ST			265	CATHERINE	ST		K1R7S5	41220408	OLD OTTAWA	333310					463.2067608	10345.60225
261	RELIABLE PARTS	Retail trade	2006-ES	1	2006		578	BANK	ST			578	BANK	ST		K1S3T3	41340123	OLD OTTAWA	443110					89.30116607	376.2257759
490	AUTO REPAIRS	Motor Vehicle Repair Shops	1920-M	1	1920	c. 1920	612	BANK	ST	WEST	OTTAWA	612	BANK	ST		K1S3T6	1.58E+08	OLD OTTAWA	811112; 811119	635	612-614; No number in 1900. Boat builder in 1910. Company not there in 1930, 1940, 1950.		165.1317086	1146.072288	
491	CAPITAL BOAT & CANOE WORKS	Boat Building and Repair Industry	1900-M	1	1900	c. 1900	631	BANK	ST		OTTAWA	612	BANK	ST		K1S3T6	1.58E+08	OLD OTTAWA	336612	328			165.1317086	1146.072288	
552	D O'CONNOR JR	Lumber Yard, Sawmill, Planing Mill and Shingle Mill Products Industries	1912-FIP-73-493	1	1912-1920	c. 1912	258	CATHERINE	ST		OTTAWA	270	CATHERINE	ST		K1R5T3	41220518	OLD OTTAWA	321111; 321112	251; 254	258 to 264		303.7845156	5279.454473	
558	THOMAS BLACK AND SONS CANADA LIMITED	Canvas and Related Products Industry	1970/71-S; 1971-M	1	1970-1971	c. 1970-1971	225	STRATHCONA	AVE		OTTAWA	601	BANK	ST		K1S3T4	41330051	OLD OTTAWA	314910	193			95.07071103	493.2786818	
613	BELLHOUSE, DILLON & CO ASPHALT & PAVING	Other Petroleum and Coal Products Industries	1922-FIP-74-493	1	1900-1950	c. 1922	234	CATHERINE	ST		OTTAWA	240	CATHERINE	ST		K2P2G8	41220636	OLD OTTAWA	238390; 238990	369; 421	Extends from corner to 250 Catharine St. & south to the railway.	1, above ground, oil, capacity not given	260.1829619	4012.70068	
614	TAGGART SERVICE STATION	Gasoline Service Stations	1930-M; 1940-M; 1948-FIP-133-4	1	1900-1956	c. 1930; c. 1940	234	CATHERINE	ST		OTTAWA	240	CATHERINE	ST		K2P2G8	41220636	OLD OTTAWA	447110; 447190	633; 635		Two USTs on north corner of property	178.2956169	1732.114851	
928	BANK & HIGHWAY 17 DUMP	Dump	1991-WDSI/WMB/MOE; 2004-GW	1	1930-1940	GW Study 2004 Renfrew Watershed					OTTAWA	630	BANK	ST		41340361	OLD OTTAWA					1284.360588	35190.76552		
929	STERLING MARKING PRODUCTS INC	Commercial Printing Industries	2001-ES; 2004-GWStudy	1	1942-2001	c. 2001	112	ISABELLA	ST		OTTAWA	100	ISABELLA	ST		K1S1V5	1.58E+08	OLD OTTAWA	323119					117.9558661	868.198954
930	VENDALL MACHINES LIMITED	Machine Shop Industry	1948-FIP-137-498; 1948-M; 1955	1	1948-1965	c. 1948-1965	110	ISABELLA	ST		OTTAWA	100	ISABELLA	ST		K1S1V5	1.58E+08	OLD OTTAWA	332510; 332710	306; 308	Machine Shop, Soft Drink Cabinet Assembly		117.9558661	868.198954	
931	UN-NAMED LAUNDRY	Laundries and Cleaners	1912-FIP-74-496; 1922-FIP-74-496	1	1901-1956	c. 1922	158	ISABELLA	ST		OTTAWA	460	O'CONNOR	ST		K1S5H3	41230099	OLD OTTAWA	561740; 812310	972	Large coal room on the north corner of		98.87247659	558.8943777	
932	CANADIAN BANK NOTE CO	Platemaking, Typesetting and Bindery Industry	1948-FIP-133-496; 1948-M; 1956	1	1948-1956	c. 1948-1956	158	ISABELLA	ST		OTTAWA	460	O'CONNOR	ST		K1S5H3	41230099	OLD OTTAWA	323114; 323115	281; 282; 479			98.87247659	558.8943777	
933	MORRISON LAMOTHE LIMITED	Motor Vehicle Repair Shops	1940-M	1	1940	c. 1940	158	ISABELLA	ST		OTTAWA	460	O'CONNOR	ST		K1S5H3	41230099	OLD OTTAWA	811112; 811119	635	Canadian bank Note Warehouse in 1950. Washing machine warehouse in 1930.		98.87247659	558.8943777	
934	CC RAY COAL CO	Railway Transport and Related Service Industries	1901-FIP; 1912-FIP-74-496; 1922-FIP-74-496	1	1948-1956	c. 1948-1956	134	ISABELLA	ST		OTTAWA	460	O'CONNOR	ST		K1S5H3	41230099	OLD OTTAWA	482112; 482113	453	ca. 1948 -Listed as City Weigh Scales		91.39052348	446.865556	
935	UNNAMED MACHINE SHOP	Machine Shop Industry	1912-FIP-145-494B; 1921-M; 1922-FIP-73-494B	1	1912-1922	c. 1922	8	CHAMBERLAIN	AVE		OTTAWA	14	CHAMBERLAIN	AVE		K1S1V9	41340356	OLD OTTAWA	332710; 333619	308			91.10695742	490.5547559	
936	BERNEY & BLACK	Motor Vehicle Repair Shops	1920-M; 1922-FIP-73-494B; 1930-M	1	1920-1950	c. 1920; c. 1930	10	CHAMBERLAIN	ST		OTTAWA	14	CHAMBERLAIN	AVE		K1S1V9	41340356	OLD OTTAWA	811112; 811119	635			91.10695742	490.5547559	
940	MCAULIFFE DAVIS LUMBER CO LIMITED	Lumber and Building Materials, Wholesale	1910-M; 1912-FIP-73-490; 1912-M	1	1900-1956	c. 1910-1920	105	CHAMBERLAIN	ST		OTTAWA	0					41220640		321111; 321112	251; 254;	Unit 31; Lumber shed, shaving shop, dry kiln, contractors yard, factory FIP1948, FIP1956-Rideau Distributors Ltd. hardware and machinery supply co. @ 41-43 Chamberlain St.		422.6644389	9112.635473	
941	GEORGE P HARRIS LIMITED	Petroleum Products, Wholesale	1940-M; 1948-FIP-132-491; 1948-M	1	1940-1956	c. 1940-1956	49	CHAMBERLAIN	ST		OTTAWA	0					41220533		412110; 419120	511	FIP1912 - part of McAuliffe Davis Lumber Co. Ltd. property - full lot for address # 49 - fills except for small auto garage (parking) FIP1922 - residence M. 1949 - lists no # after #47 & before #51 NB - block # changed		168.9741916	1622.926448	
942	MIS-CAN-ADA MANUFACTURE CO LIMITED	Small Electrical Appliance Industry	1930-M	1	1930	c. 1930	0	CHAMBERLAIN	AVE		OTTAWA	0					41220533		331511; 332810	294; 331	41 -43; - Construction, foundry, mechanical & engineering work of all kinds - vacuum cleaners		125.481951	759.5206139	
943	HOUSEHOLD LAUNDRY CO	Laundries and Cleaners	1920-M; 1930-M	1	1920-1930	c. 1920-1930	0	CHAMBERLAIN	AVE		OTTAWA	0					41220533		561740; 812310	972	31 to 37		125.1463438	773.0923713	
944	CARSWELL AUTO WRECKERS	Waste Materials, Wholesale	1948-FIP-133-493; 1948-M; 1953	1	1948	c. 1948	29	CHAMBERLAIN	AVE		OTTAWA	0					41220533		415310; 418110	591			111.2141288	500.200648	
945	WRIGHT BROTHERS SUPPLIES LIMITED	Other Storage and Warehousing Industries	1912-FIP-74-493; 1921-M; 1922-FIP-74-493	1	1901-1956	c. 1912-1956	250	CATHERINE	ST		OTTAWA	240	CATHERINE	ST		K2P2G8	41220636	OLD OTTAWA	416310; 416320	479; 563	250 to 252		170.3781921	1675.522293	
947	MCKAY MOTOR SERVICES	Motor Vehicle Repair Shops	1922-FIP-74-468; 1930-M; 1940-M	1	1900-1998	c. 1922-1948	235	CATHERINE	ST		OTTAWA	28	ARLINGTON	AVE		K2P1C2	41220638	OLD OTTAWA	447110; 447190	633; 635	Auto Repairs done at this location in 1930		105.3107418	674.0728431	
948	D L HANES	Household Furniture Stores	1956-FIP-133-468	1	1901-1956	c. 1956	0	CATHERINE	ST		OTTAWA	28	ARLINGTON	AVE		K2P1C2	41220638	OLD OTTAWA	442110	621	Auto parts in 1950		96.72281951	542.038815	
949	L C BENSON	Other Rubber Products Industries	1920-M; 1922-FIP-66-467; 1930-M	1	1920-1957	c. 1920; c. 1930	510	BANK	ST		OTTAWA	502	BANK	ST		K2P1Z4	41220199	OLD OTTAWA	322220; 326210	151; 159	Grocer at this location in 1912	FIP1949, FIP1956 - One UST, 460 gallons - perpendicular to Arlington Ave.	66.24273332	145.8003141	
950	SUBWAY SERVICE STATION	Gasoline Service Stations	1940-M	1	1900-1950	c. 1940	498	BANK	ST		OTTAWA	488	BANK	ST		K2P1Z4	41220630	OLD OTTAWA	447110; 447190	633			94.38519402	506.8305033	
1217	INFILLED AREA	Infilled Area	1887-Topo	1	1887																		1187.547106	14047.8841	
1391	OTTAWA CITY MAGAZINE	Combined Publishing and Printing Industries	2001-ES	1	2001		226	ARGYLE	AVE			226	ARGYLE	AVE			41230015						117.0824304	819.6032474	
1394	BETTER BATTERY SERVICE LTD	Motor Vehicle Repair Shops	1930-M	1	1930		529	BANK	ST		OTTAWA	529	BANK	ST			41230007	OTTAWA					107.9020625	709.0200099	

OBJECTID	ACTIVITY_NAME	FACILITY_TYPE	SOURCE_UPDATE_SORTED	QAQC	YEAR	YEAR_1	ST_NUM	ST_NAME	ST_SUFFIX	ST_DIR	MUNICIPALI TY	ST_NUM201 7	ST_NAME2017	ST_SUFFIX2 017	ST_DIR2017	POSTAL_CO DE2017	PIN2017	MUNICIPALITY2017	NAICS	SIC	COMMENTS	STORAGE_TANK	Shape_Length	Shape_Area
1395	SIMMONS PRINTING COMPANY	Commercial Printing Industries	1920-M	1	1920		519	BANK	ST		OTTAWA	519	BANK	ST			41230007	OTTAWA					107.9020625	709.0200099
1396	THE PRINTING HOUSE LTD	Commercial Printing Industries	1980-M; 1994-1997-M; 1994-PID	1	1980-1997		519	BANK	ST		OTTAWA	519	BANK	ST			41230007	OTTAWA					107.9020625	709.0200099
1397	BISHOPRIC MANUFACTURING COMPANY LTD	Hydraulic Cement Industry	1920-M	2	1920		529	BANK	ST		OTTAWA	529	BANK	ST			41230007	OTTAWA					107.9020625	709.0200099
1398	RAINBOW GLASS WORKS	Hydraulic Cement Industry	1980-M	2	1980		529	BANK	ST		OTTAWA	529	BANK	ST			41230007	OTTAWA					107.9020625	709.0200099
1401	BEACH MOTORS LTD	Gasoline Service Stations	1912-1922-M; 1930-1940-M	1	1912-1940		136	CATHERINE	ST		OTTAWA	136	CATHERINE	ST			41230141	OTTAWA					128.4086082	947.4140038
1402	WALLACE PORTEOUS/JOHN O'KATY MOTOR REPAIRS	Gasoline Service Stations	1960-M	1	1960		136	CATHERINE	ST		OTTAWA	136	CATHERINE	ST			41230141	OTTAWA					128.4086082	947.4140038
1423	GILESPIES AND JOHNSON	Gasoline Service Stations	1955-1956-M	2	1955-56			BANK	ST		OTTAWA	0	BANK	ST			1.58E+08	OTTAWA					124.3314145	961.6164251
1424	GORDON H JOHNSON SERVICE STATION	Gasoline Service Stations	1940-M	2	1940			BANK	ST		OTTAWA	0	BANK	ST			1.58E+08	OTTAWA					124.3314145	961.6164251
1425	REDSHAW & CRANKSHAW SERVICE STATION	Gasoline Service Stations	1960-1970-M	2	1960-1970			BANK	ST		OTTAWA	0	BANK	ST			1.58E+08	OTTAWA					124.3314145	961.6164251
1426	ROY BAKER SERVICE STATION	Gasoline Service Stations	1948-M	2	1948			BANK	ST		OTTAWA	0	BANK	ST			1.58E+08	OTTAWA					124.3314145	961.6164251
1427	STUART GILLESPIE SERVICE STATION	Gasoline Service Stations	1950-M	2	1950			BANK	ST		OTTAWA	0	BANK	ST			1.58E+08	OTTAWA					124.3314145	961.6164251
1428	SUPERTEST PETROLEUM CORP LTD	Gasoline Service Stations	1930-M; 1946-1957-M	2	1930-1957			BANK	ST		OTTAWA	0	BANK	ST			1.58E+08	OTTAWA					124.3314145	961.6164251
1563	MEMEC DESIGN SERVICES	Electrical and Electronic Machinery, Equipment and Supplies, Wholesale	2001-ES	1	2001		240	CATHERINE	ST			240	CATHERINE	ST			41220636						228.0278517	2778.32512
1564	ALPHATEXT RONALDS PRINTING	Combined Publishing and Printing Industries	1994-PID	1	1994		240	CATHERINE	ST			240	CATHERINE	ST			41220636						228.0278517	2778.32512
1565	THE CANADA CHINA NEWS	Combined Publishing and Printing Industries	1998-SC; 2001-ES	1	1998-2001		240	CATHERINE	ST			240	CATHERINE	ST			41220636						228.0278517	2778.32512
1566	R B T PRINTING LTD	Commercial Printing Industries	1980-M	1	1980		479	BANK	ST		OTTAWA	479	BANK	ST			41230003	OTTAWA					252.5321738	2468.34945
1567	CONEX COLORSTAT REPRODUCTIONS	Commercial Printing Industries	1980-M	1	1980		479	BANK	ST		OTTAWA	479	BANK	ST			41230003	OTTAWA					252.5321738	2468.34945
1569	ATLANTICA BODY SHOP	Motor Vehicle Repair Shops	1980-M	1	1980		120	ISABELLA	ST			120	ISABELLA	ST			41230088						106.5957808	687.0466618
1570	CORRIGAN'S GARAGE	Motor Vehicle Repair Shops	1956-1970-M	1	1956-1970		120	ISABELLA	ST			120	ISABELLA	ST			41230088						106.5957808	687.0466618
1571	GRIFFIN AUTOMOTIVE SERVICE LTD	Motor Vehicle Repair Shops	1998-SC; 2001-ES; 2005-Select	1	1998-2005		120	ISABELLA	ST			120	ISABELLA	ST			41230088						106.5957808	687.0466618
1572	SUPERIOR AUTO BODY LTD	Motor Vehicle Repair Shops	1990-CD; 1998-SC; 2001-ES	1	1990-2001		120	ISABELLA	ST			120	ISABELLA	ST			41230088		811121				106.5957808	687.0466618
1575	DIFFERENT COMPANY-PLANING MILL	Sawmill, Planing Mill and Shingle Mill Products Industries	1900-M	1	1900		488	METCALFE	ST		OTTAWA	488	METCALFE	ST			41230135	OTTAWA					225.4711662	3159.863551
1694	J & C LOW	Sawmill, Planing Mill and Shingle Mill Products Industries	1912-M	1	1912		258	CATHERINE	ST		OTTAWA	0	CATHERINE	ST			41220518	OTTAWA					312.7603903	5518.852249
1705	STANDARD PAVING LTD	Other Petroleum and Coal Products Industries	1922-M	1	1922		234	CATHERINE	ST		OTTAWA	0	CATHERINE	ST			41220636	OTTAWA					259.8453243	4003.900962
1706	DOMESTIC SERVICE STATION	Gasoline Service Stations	1930-M	1	1930		234	CATHERINE	ST		OTTAWA	234	CATHERINE	ST			41220636	OTTAWA					178.2956169	1732.114851
1765	LAKE'S BRAKE SERVICE	Motor Vehicle Repair Shops	1948-M; 1950-M	1	1948-1950		10	CHAMBERLAIN	ST		OTTAWA	10	CHAMBERLAIN	ST			41340356	OTTAWA					91.10695742	490.5547559
1767	ARLINGTON TIRE SHOP	Other Rubber Products Industries	1922-FIP-66-467; 1957-M	1	1922-1957		510	BANK	ST		OTTAWA	510	BANK	ST			41220199	OTTAWA					66.24273332	145.8003141
1768	OTTAWA TIRE SHOP	Other Rubber Products Industries	1920-M; 1922-FIP-66-467	1	1920-1922		510	BANK	ST		OTTAWA	510	BANK	ST			41220199	OTTAWA					66.24273332	145.8003141
1850	MCKNIGHT & SONS	Mechanical Specialty Work	2001-ES; 2005-SelectPhone	1	2001-2005		191	PRETORIA	AVE			191	PRETORIA	AVE		K1S1X1	41230112	Old Ottawa					84.06760919	340.8297094
1851	CAPITAL PLANING MILL COMPANY LTD	Sawmill, Planing Mill and Shingle Mill Products Industries	1912-FIP-74-495	1	1900-1910		521	BANK	ST	EAST	OTTAWA	200	CATHERINE	ST		K2P2K9	41230008	Old Ottawa					414.6975714	6195.897536
1852	WC EDWARDS & COMPANY LTD	Sawmill, Planing Mill and Shingle Mill Products Industries	1920-M	1	1920		521	BANK	ST	EAST	OTTAWA	200	CATHERINE	ST		K2P2K9	41230008	Old Ottawa					415.2318462	6211.461545
1916	LAFLAMME, A A	Commercial Printing Industries	na	1				O'CONNOR	ST		OTTAWA	180	ARGYLE	AVE		K2P1B7	41230053	Old Ottawa					326.9040709	6553.223842
1921	M X PETROLEUM INC	Motor Vehicle Repair Shops	1998-SC	1	1998		235	CATHERINE	ST		OTTAWA	512	BANK	ST		K2P1Z6	41220200	Old Ottawa					183.1898004	1826.93745
1922	MACEWAN PETROLEUM	Motor Vehicle Repair Shops	1997-M	1	1997		235	CATHERINE	ST		OTTAWA	512	BANK	ST		K2P1Z6	41220200	Old Ottawa					183.1898004	1826.93745
1923	ATKINSON STONECRAFT MASONRY	Exterior Close In Work	2001-ES; 2005-SelectPhone	1	2001-2005		191	STRATHCONA	AVE			191	STRATHCONA	AVE		K1S1X7	41330040	Old Ottawa					83.45411593	337.5355963
2857	WH MARTIN & SONS	Laundries and Cleaners	1930-M; 1940-M; 1948-FIP-131-4	1	1900-1997	c. 1930-1970	249	ARGYLE	AVE		OTTAWA	255	ARGYLE	AVE		K2P2N7	1.56E+08	OLD OTTAWA	561740; 812310	972	249 to 251		212.3910752	2372.850814
2858	FUMETTES LIMITED	Other Chemical Products Industries	1940-M	1	1940	c. 1940	255	ARGYLE	AVE		OTTAWA	255	ARGYLE	AVE		K2P2N7	1.56E+08	OLD OTTAWA	325520; 325910	379			212.3910752	2372.850814
2859	NORBORD ENTERPRISES LIMITED	Recreational Vehicle Dealers (Where Servicing Is Present)	1970-M	1	1970	c. 1970	267	ARGYLE	AVE		OTTAWA	255	ARGYLE	AVE		K2P2N7	1.56E+08	OLD OTTAWA	811490	632			212.3910752	2372.850814
2860	SANITARY LAUNDRY & DRY CLEANERS CO LTD	Laundries and Cleaners	1910-M; 1912-FIP-66-470; 1920-	1	1910-1950	c. 1910-1920	255	ARGYLE	AVE		OTTAWA	255	ARGYLE	AVE		K2P2N7	1.56E+08	OLD OTTAWA	561740; 812310	972	M.1949 lists as 'Ottawa Sanitary Cleaners'.		212.3910752	2372.850814
2871	JAMES MORE AND SONS LIMITED	Site Work	1970-M	1	1970	c. 1970	239	ARGYLE	AVE		OTTAWA	239	ARGYLE	AVE		K2P1B8	41230032	OLD OTTAWA	238390; 238990	421			135.3882386	798.1838007
2872	ARGYLE ASSOCIATES	Health care and social assistance	2016-PID	1	2016	PID2016	239	ARGYLE	ST		OTTAWA	239	ARGYLE	AVE		K2P1B8	41230032	OLD OTTAWA	621110		<Null>		135.3882386	798.1838007
2873	DESMARAIS RICHARD PHOTOGRAPHY	Photography	1990-CD; 2001-ES	1	1990-2001	CD 1990	205	CATHERINE	RD			205	CATHERINE	ST		K2P1C3	41230006	OLD OTTAWA					222.981209	1907.167174
2874	NATIONAL DRUG & CHEMICAL CO OF CANADA LTD	Chemical & Drug Manufacture, Shipping and Storage	1948-FIP-133-471; 1948-M; 1955-	1	1901-1980	c. 1948-1960	205	CATHERINE	ST		OTTAWA	205	CATHERINE	ST		K2P1C3	41230006	OLD OTTAWA			One transformer on west side of property.		159.0109449	1520.060978
2875	DYNOMIGHT CARTOONS	Motion Picture Laboratories and Video Production Facilities	2005-SelectPhone; 2006-ES	1	2005-2006	c. 2005	205	CATHERINE	ST			205	CATHERINE	ST		K2P1C3	41230006	OLD OTTAWA	512110				222.981209	1907.167174
2876	GINN PHOTOGRAPHIC COMPANY	Platemaking, Typesetting and Bindery Industry	1998-SC; 2000-PID	1	1998-2000	c. 1998; c. 20	205	CATHERINE	ST		OTTAWA	205	CATHERINE	ST		K2P1C3	41230006	OLD OTTAWA	323120; 443130	282; 657	Suite 100		222.981209	1907.167174
2877	KEN COMMUNICATIONS AND PUBLIC AFFAIRS	Mechanical Specialty Work	2001-ES	1	2001	c. 2001	205	CATHERINE	ST		OTTAWA	205	CATHERINE	ST		K2P1C3	41230006	OLD OTTAWA	238210				222.981209	1907.167174
2878	WHERE - OTTAWA HULL	Publishing (Magazine)	2004-GWStudy	1	1959	GW Study 2004 Scotts					OTTAWA	226	ARGYLE	AVE		K2P1B9	41230015	OLD OTTAWA	511120	2721	226 Argyle Ave		117.0824304	819.6032474
2879	CAPITAL PUBLISHERS	Combined Publishing and Printing Industries	2001-ES; 2004-GWStudy; 2005-	1	1958-2005	c. 2001; c. 20	226	ARGYLE	AVE			226	ARGYLE	AVE		K2P1B9	41230015	OLD OTTAWA	511120				117.0824304	819.6032474
2885	MILLIGAN DENTAL LABORATORY	Medical and Other Health Laboratories	1970-M; 1980-M; 1998-SC; 2001	1	1960-2001	c. 1970-1998	114	ISABELLA	ST		OTTAWA	114	ISABELLA	ST		K1S1V5	41230086	OLD OTTAWA	334610; 621510	399			84.0485258	338.9519072
2886	ROYAL CANADIAN ARMY SERVICE CORP (D N D GARAGE)	Motor Vehicle Repair Shops	1948-FIP-133-495; 1948-M; 1955-	1	1901-1980	c. 1948-1960	214	CATHERINE	ST		OTTAWA	200	CATHERINE	ST		K2P2K9	41230008	OLD OTTAWA	415110; 415120	551; 635; 811		Two USTs in north east section of property	344.4976662	5174.857586

OBJECTID	ACTIVITY_NAME	FACILITY_TYPE	SOURCE_UPDATE_SORTED	QAQC	YEAR	YEAR_1	ST_NUM	ST_NAME	ST_SUFFIX	ST_DIR	MUNICIPALITY	ST_NUM2017	ST_NAME2017	ST_SUFFIX2017	ST_DIR2017	POSTAL_CODE2017	PIN2017	MUNICIPALITY2017	NAICS	SIC	COMMENTS	STORAGE_TANK	Shape_Length	Shape_Area
																					It takes up the area between Isabella and Catherine, south west from Elgin and the Driveway to O'Connor. Grand Trunk Railway bought by CNR in 1925. CNR also listed with an address on Bank St.(556 Bank St.); - wood working, car building shop/office,large coal bin and cattle pens Also listed with a*			
2889	CANADA ATLANTIC RAILWAY (GRAND TRUNK RAILWAY)	Railway Transport and Related Service Industries, Railway Station, Car Building Shops & Coal Bins	1887-Topo; 1900-M; 1901-FIP; 1960-M; 1970-M	2	1887-1956	c. 1900; c. 19	0	CATHARINE	ST		OTTAWA	0					41230065		482112; 482113	453; 457;			1445.075846	39676.48235
2890	GEORGE P HARRIS LIMITED	Heating Equipment Industry	1960-M; 1970-M	1	1960-1970	c. 1960-1970	182	ISABELLA	ST		OTTAWA	182	ISABELLA	ST		K1S1V7	41230101	OLD OTTAWA	333310; 333413	307			84.10206562	341.0145543
2891	CBU PUBLICATIONS LTD	Information and cultural industries	2001-ES; 2006-ES	1	2001-2006	ES 2001; ES	420	O'CONNOR	ST			420	O'CONNOR	ST		K2P1W4	41230012	OLD OTTAWA	511120; 512210; 541810				122.0808985	931.3896724
2892	THE PRINTING HOUSE	Printing	1990-CD	1	1990	CD 1990	523	BANK	ST			519	BANK	ST		K2P1Z5	41230007	OLD OTTAWA					107.9020625	709.0200099
2893	OTTAWA BEACH MOTOR CO LIMITED	Motor Vehicle Repair Shops	1930-M	2	1900-1950	c. 1930	529	BANK	ST		OTTAWA	519	BANK	ST		K2P1Z5	41230007	OLD OTTAWA	811112; 811119	635			107.9020625	709.0200099
2894	PRINTERS	Commercial Printing Industries	1920-M; 1930-M; 1940-M; 1950-M	1	1900-1997	c. 1920; c. 19	519	BANK	ST		OTTAWA	519	BANK	ST		K2P1Z5	41230007	OLD OTTAWA	323114; 323115	281	No number in 1900, 1910 Company not ther in 1930, 1940, 1950.		107.9020625	709.0200099
2895	RANDALL'S PAINTS	Hardware, Paint, Glass and Wallpaper Stores (Paint Storage)	1990-M	1	1990-1997	c. 1990	525	BANK	ST		OTTAWA	519	BANK	ST		K2P1Z5	41230007	OLD OTTAWA	325510; 444130	375; 653	1997 - listed at 555 Bank (moved)		107.9020625	709.0200099
2896	W M R NICHOL	Petroleum Products, Wholesale	1900-M	1	1900-1950	c. 1900	521	BANK	ST		OTTAWA	519	BANK	ST		K2P1Z5	41230007	OLD OTTAWA	412110; 419120	511			107.9020625	709.0200099
2897	WW GIBSON CO LIMITED	Other Machinery and Equipment Industries	1930-M	2	1900-1950	c. 1930	529	BANK	ST		OTTAWA	519	BANK	ST		K2P1Z5	41230007	OLD OTTAWA	332991; 333110	319			107.9020625	709.0200099
2898	CAMEX PRECISION CAMERA REPAIR	Electrical and Electronic Machinery, Equipment And Supplies, Wholesale	2001-ES	1	2001	c. 2001	525	BANK	ST		OTTAWA	519	BANK	ST		K2P1Z5	41230007	OLD OTTAWA	811210				107.9020625	709.0200099
2899	MANUFACTURER	Hydraulic Cement Industry	1920-M; 1930-M; 1940-M; 1950-M	2	1920-1980	c. 1920; c. 19	529	BANK	ST		OTTAWA	519	BANK	ST		K2P1Z5	41230007	OLD OTTAWA	327214; 327310	352; 356;	No number in 1900 & 1910 Company not there in 1930, 1940, 1950.		107.9020625	709.0200099
2900	INSTANT IMPRINTS	Printers (Mfrs)	2017-SalesGenie	1	2017	SalesGenie 2017					OTTAWA	519	BANK	ST		K2P1Z5	41230007	OLD OTTAWA	32311109	Feb-52			107.9020625	709.0200099
2906	GENERAL ELECTROCOM	Electric Lighting Industries	2005-SelectPhone	1	2005	c. 2005	5	ARLINGTON	AVE			0					41220203		334290				33.32006548	23.82336195
2907	DAVIES JIM PHOTOGRAPHY INC	Photography	1990-CD	1	1990	CD 1990	203	CATHERINE	RD			203	CATHERINE	ST		K2P1C3	41230157	OLD OTTAWA					169.7841675	1797.030299
2908	SOBA OTTAWA INC	Construction	2016-PID	1	2016	PID2016	203	CATHERINE	ST		OTTAWA	203	CATHERINE	ST		K2P1C3	41230157	OLD OTTAWA	236220				169.7841675	1797.030299
2909	SUNLIGHT OIL COMPANY	Motor Vehicle Repair Shops	1948-FIP-133-495; 1948-M; 1950-M	1	1900-1956	c. 1948-1950	210	CATHERINE	ST		OTTAWA	136	CATHERINE	ST			41230141	OLD OTTAWA	447110; 447190	633; 635	Greasing room and oil warehouse on property	Two USTs -centrally located	128.4086082	947.4140038
2910	LANDRY'S BP SERVICE STATION	Gasoline Service Stations	1930-M; 1940-M; 1950-M; 1960-M	1	1900-1980	c. 1930-1940	136	CATHERINE	ST		OTTAWA	136	CATHERINE	ST		41230141	OLD OTTAWA	447110; 447190	633; 635				128.4086082	947.4140038
2916	PETRO-CANADA LTD	Gas	1990-CD	1	1990	CD 1990	270	CATHERINE	RD			270	CATHERINE	ST		K1R5T3	41220518	OLD OTTAWA					257.9496238	4070.208576
2917	DUSTAN'S JACK CAR CARE LTD	Automotive Repair	1990-CD	1	1990	CD 1990	260	CATHERINE	RD			270	CATHERINE	ST		K1R5T3	41220518	OLD OTTAWA			270 Catherine ST		257.9496238	4070.208576
2918	BP SERVICE STATION	Gasoline Service Stations	1970-M; 1980-M; 1998-SC	1	1960-1998	c. 1970-1980	270	CATHERINE	ST		OTTAWA	270	CATHERINE	ST		K1R5T3	41220518	OLD OTTAWA	447110; 447190	633	Cantel Canada's site has onsite retail fuelling		257.9496238	4070.208576
2919	DERAND	Appliance, Television, Radio and Stereo Stores	2001-ES	1	2001	c. 2001	270	CATHERINE	ST		OTTAWA	270	CATHERINE	ST		K1R5T3	41220518	OLD OTTAWA	443110				257.9496238	4070.208576
2939	SHELL CO OF CANADA LIMITED	Gasoline Service Stations	1930-M	2	1900-1950	c. 1930	0	BANK	ST		OTTAWA	661	BANK	ST		41330180	OLD OTTAWA	447110; 447190	633				124.3220144	706.5874001
2941	BYRNES OWEN D GARAGE	Motor Vehicle Repair Shops	1940-M	1	1900-1950	c. 1940	640	BANK	ST		OTTAWA	640	BANK	ST		K1S3Z8	41340272	OLD OTTAWA	811112; 811119	635			116.0287685	830.2128748
2942	CHAMPLAIN OIL COMPANY LIMITED	Gasoline Service Stations	1940-M; 1948-FIP-135-1225; 194	1	1900-1956	c. 1940-1956	640	BANK	ST		OTTAWA	640	BANK	ST		K1S3Z8	41340272	OLD OTTAWA	412110; 419120	511; 633	Also called Champlain Service Centre	Two USTs 500 gals on north side of property	116.0287685	830.2128748
2953	CENTRAL PK DUMP	Dump	2004-GWStudy; 2004-Ottawa-Gc	2	1910-1920	GW Study 2004 Renfrew Watershed					OTTAWA	630	BANK	ST		41340361	OLD OTTAWA					722.6304344	18591.70531	
2956	GLEBE PET HOSPITAL	Office/Veterinary	2001-ES; 2006-ES; 2012-ES	1	2001-2012	ES 2006; ES	595	BANK	ST			595	BANK	ST		K1S3T4	41330050	OLD OTTAWA	541940				82.25822748	256.8500803
2976	STUART GILLESPIE	Gasoline Service Stations	1930-M; 1940-M; 1948-FIP-136-7	2	1900-1980	c. 1930; c. 19	0	BANK	ST		OTTAWA	617	BANK	ST		K1S3T5	1.58E+08	OLD OTTAWA	447110; 447190	633; 635;	615-619	Two USTs	124.3314145	961.6164251
2977	JAMES H ALLAN	Other Transportation Equipment Industries	1900-M	2	1900	c. 1900	0	BANK	ST		OTTAWA	617	BANK	ST		K1S3T5	1.58E+08	OLD OTTAWA	336990	329			124.3314145	961.6164251
2978	SERVICE STATION, SUPERTEST PETROLEUM CORP,	Gasoline Service Station	1934-CityofOttawa	2	1934	c. 1934	615	BANK	ST			617	BANK	ST		K1S3T5	1.58E+08	OLD OTTAWA					124.3314145	961.6164251
2979	UNION ELECTRIC SUPPLY CO LIMITED	Electrical and Electronic Machinery, Equipment And Supplies, Wholesale	1955-M; 1956-FIP-136-791A	1	1912-1956	c. 1956	601	BANK	ST		OTTAWA	601	BANK	ST		K1S3T4	41330051	OLD OTTAWA	416110; 416120	574	601-603	Two USTs	95.07071103	493.2786818
2980	CAPITAL MOTORS LIMITED	Motor Vehicle Repair Shops	1940-M; 1948-FIP-136-791A; 19	1	1900-1950	c. 1940; c. 19	601	BANK	ST		OTTAWA	601	BANK	ST		K1S3T4	41330051	OLD OTTAWA	811112; 811119	635	601-603	2, underground	95.07071103	493.2786818
4188	EUROPEAN GLASS & PAINT CO LIMITED	Motor Vehicle Repair Shops	2001-ES; 2004-GWStudy; 2012-	1	1938-2012	c. 2001	488	BANK	ST		OTTAWA	488	BANK	ST		K2P1Z4	41220630	OLD OTTAWA	444190; 811121				141.9182903	1216.982013
4189	OTTAWA ELECTRIC CO	Electric Power Systems Industry	1900-M	1	1900-1950	c. 1900	240	CATHERINE	ST		OTTAWA	240	CATHERINE	ST		K2P2G8	41220636	OLD OTTAWA	221111; 221112	491			228.0278517	2778.32512
4190	PRINTING HOUSE LIMITED, THE	Commercial Printing Industries	2000-PID; 2001-ES	1	2000-2001	c. 2000; c. 20	240	CATHERINE	ST		OTTAWA	240	CATHERINE	ST		K2P2G8	41220636	OLD OTTAWA	323114; 323116; 323119				228.0278517	2778.32512
4191	UNIQUE TECHNOLOGIES	Communication and Other Electronic Equipment Industries	2001-ES	1	2001	c. 2001	240	CATHERINE	ST		OTTAWA	240	CATHERINE	ST		K2P2G8	41220636	OLD OTTAWA	334410				228.0278517	2778.32512
4192	HAY JOHN AND CO LIMITED	Hardware, Tool and Cutlery Industries	1940-M	2	1940	c. 1940	234	CATHERINE	ST		OTTAWA	240	CATHERINE	ST		K2P2G8	41220636	OLD OTTAWA	332510; 333511	306			228.0278517	2778.32512
4193	INSIGHT COMPONENTS CANADA INC	Electrical and Electronic Machinery, Equipment And Supplies, Wholesale	2001-ES; 2005-SelectPhone; 20	1	2001-2006	c. 2001; c. 20	240	CATHERINE	ST			240	CATHERINE	ST		K2P2G8	41220636	OLD OTTAWA	417320		#405		228.0278517	2778.32512
4194	NATIONAL CAPITAL NEWS CANADA	Combined Publishing and Printing Industries	1994-PID; 1998-SC; 2005-Select	1	1994-2005	c. 1994; c. 19	240	CATHERINE	ST			240	CATHERINE	ST		K2P2G8	41220636	OLD OTTAWA	323120; 511110	282; 284			228.0278517</	

OBJECTID	ACTIVITY_NAME	FACILITY_TYPE	SOURCE_UPDATE_SORTED	QAQC	YEAR	YEAR_1	ST_NUM	ST_NAME	ST_SUFFIX	ST_DIR	MUNICIPALI TY	ST_NUM201 7	ST_NAME2017	ST_SUFFIX2 017	ST_DIR2017	POSTAL_CO DE2017	PIN2017	MUNICIPALITY2017	NAICS	SIC	COMMENTS	STORAGE_TANK	Shape_Length	Shape_Area	
4199	C W G FOOTCARE	Leather and Allied Products Industries	2001-ES	1	2001	c. 2001	485	BANK	ST		OTTAWA	473	BANK	ST		K2P1Z2	41230003	OLD OTTAWA	316210				252.5321738	2468.34945	
4200	CAPITAL MOTORS OF OTTAWA LIMITED	Gasoline Service Stations	1930-M	1	1900-1950	c. 1930	485	BANK	ST		OTTAWA	473	BANK	ST		K2P1Z2	41230003	OLD OTTAWA	447110; 447190	633	485 - 489		167.3863697	1599.837452	
4201	THE PRINTING HOUSE	Commercial Printing Industries	1980-M	1	1960-1980	c. 1980	479	BANK	ST		OTTAWA	473	BANK	ST		K2P1Z2	41230003	OLD OTTAWA	323114; 323115	281			252.5321738	2468.34945	
4202	LETT HYDE AUTOMOBILES LIMITED	Motor Vehicle Repair Shops	1960-M; 1970-M	1	1960-1970	c. 1960-1970	475	BANK	ST		OTTAWA	473	BANK	ST		K2P1Z2	41230003	OLD OTTAWA	811112; 811119	635			252.5321738	2468.34945	
4203	OMER DESERRES	Sign and Display Industry	2001-ES	1	2001	c. 2001	499	BANK	ST		OTTAWA	473	BANK	ST		K2P1Z2	41230003	OLD OTTAWA	339950				252.5321738	2468.34945	
4204	MACKENZIE BROS	Funeral Services	1901-FIP-74-471; 1912-FIP-74-4	1	1912-1922	c. 1912-1922	511	BANK	ST		OTTAWA	511	BANK	ST		K2P1Z5	41230005	OLD OTTAWA	333920; 812210	258; 973			78.61661412	282.1217691	
4212	LES FRERES PROULX BROTHERS INC	Commercial Printing Industries	1994-PID; 1998-SC; 2000-PID; 2	1	1994-2006	c. 1994-1998	141	CATHERINE	ST		OTTAWA	141	CATHERINE	ST		K2P1C3	41230020	OLD OTTAWA	323114; 323115	281; 282;	Suite 101		173.8954086	1880.50953	
4213	CBM ELEVATOR LIMITED	Other Trade Work	2003-PID	1	2003	c. 2003	258	ARGYLE	AVE		OTTAWA	258	ARGYLE	AVE		K2P1B9	41230023	OLD OTTAWA	238291				143.0299098	1150.800427	
4214	MCDougALL MICROFILMS LIMITED	Platemaking, Typesetting and Bindery Industry	1958-M; 1958-S	1	1958	c. 1958	219	ARGYLE	AVE		OTTAWA	219	ARGYLE	AVE		K2P2H4	41230036	OLD OTTAWA	323120; 812921	282	Listed at 414 Laurier Ave West in Mights 1961 Directory.		145.320925	1058.494311	
4220	GRIFFIN AUTOMOTIVE SERVICE LTD	Other/Garage	2001-ES; 2005-SelectPhone; 20	1	2001-2017	ES 2001; ES	461	O'CONNOR	ST			120	ISABELLA	ST		K1S1V5	41230088	OLD OTTAWA	811111				106.5957808	687.0466618	
4221	PLANING MILL	Sawmill, Planing Mill and Shingle Mill Products Industries	1912-FIP-75-498; 1912-M	1	1912	c. 1912	455	O'CONNOR	ST		OTTAWA	120	ISABELLA	ST		K1S1V5	41230088	OLD OTTAWA	321111; 321112	251			106.5957808	687.0466618	
4222	ELIE AUTO BODY	Motor Vehicle Repair Shops	1948-FIP-137-498; 1948-M; 195	1	1948-2017	c. 1948; c. 19	120	ISABELLA	ST			120	ISABELLA	ST		K1S1V5	41230088	OLD OTTAWA	447110; 447190	633; 635			106.5957808	687.0466618	
4223	MOLSON ONTARIO BREWERIES LTD	Brewery	1990-CD	2	1990	CD 1990	155	PRETORIA	AVE			460	O'CONNOR	ST		K1S5H3	41230099	OLD OTTAWA			460 O'Connor ST		361.9852269	7148.613004	
4224	THE GLOBAL GROUP	Other/Showroom and Small Office	2001-ES; 2006-ES; 2012-ES	2	2001-2012	ES 2001; ES	150	ISABELLA	ST			460	O'CONNOR	ST		K1S5H3	41230099	OLD OTTAWA	337213; 442110; 511190				361.9852269	7148.613004	
4225	ENTERTAINMENT PUBLICATIONS OF CANADA LIMITED	Information and cultural industries	2001-ES; 2006-ES; 2012-ES	1	2001-2012	ES 2001	460	O'CONNOR	ST			460	O'CONNOR	ST		K1S5H3	41230099	OLD OTTAWA	511190				361.9852269	7148.613004	
4226	ICHU INTRANET LEARNING	Internet Services	2004-GWStudy	2	2004	GW Study 2004 Scotts					OTTAWA	460	O'CONNOR	ST		K1S5H3	41230099	OLD OTTAWA	514191	7375	150 Isabella St		361.9852269	7148.613004	
4227	TELECOM COMPUTER	Electrical and Electronic Machinery, Equipment And Supplies, Wholesale	2001-ES	2	2001	c. 2001	150	ISABELLA	ST		OTTAWA	460	O'CONNOR	ST		K1S5H3	41230099	OLD OTTAWA	443120				361.9852269	7148.613004	
4228	CAPITAL ENDODONTICS		2016-PID	2	2016	PID2016	150	ISABELLA	ST		OTTAWA	460	O'CONNOR	ST		K1S5H3	41230099	OLD OTTAWA	<Null>		Suite 100		361.9852269	7148.613004	
4229	ELEVATION ELEVATOR		2016-PID	2	2016	PID2016	150	ISABELLA	ST		OTTAWA	460	O'CONNOR	ST		K1S5H3	41230099	OLD OTTAWA	<Null>		;		361.9852269	7148.613004	
4230	ACE SECURITY LAMINATES	Glass Coating & Tinting Materials-Mfrs	2004-GWStudy; 2005-SelectPho	2	2004-2017	SalesGenie 2	150	ISABELLA	ST		OTTAWA	460	O'CONNOR	ST		K1S5H3	41230099	OLD OTTAWA	32611310	Jun-81	1200		361.9852269	7148.613004	
4231	GRAND'MAITRE CONSTRUCTION	Office	2001-ES; 2006-ES; 2012-ES	1	2001-2012	ES 2001; ES	200	ISABELLA	ST			200	ISABELLA	ST		K1S1V7	41230102	OLD OTTAWA	231210; 231220				150.0489524	1365.229559	
4232	PERFORMANCE WINDOW TINTING	Gasoline Service Stations	2001-ES	1	2001	c. 2001	200	ISABELLA	ST		OTTAWA	200	ISABELLA	ST		K1S1V7	41230102	OLD OTTAWA	811199				150.0489524	1365.229559	
4233	DIGITAL ARTS STUDIO	Photographers	2001-ES	1	2001	c. 2001	200	ISABELLA	ST		OTTAWA	200	ISABELLA	ST		K1S1V7	41230102	OLD OTTAWA	541920				150.0489524	1365.229559	
4234	EDWARDS W C CO LIMITED	Lumber and Building Materials, Wholesale	2001-ES	1	2001	c. 2001	200	ISABELLA	ST		OTTAWA	200	ISABELLA	ST		K1S1V7	41230102	OLD OTTAWA	416320				150.0489524	1365.229559	
4235	NATIONAL SOLAR CONTROL	Hardware, Tool and Cutlery Industries	2001-ES; 2006-ES	1	2001-2006	c. 2001	200	ISABELLA	ST		OTTAWA	200	ISABELLA	ST		K1S1V7	41230102	OLD OTTAWA	332510				150.0489524	1365.229559	
4236	RANDALL'S PAINTS	Lumber and Building Materials, Wholesale	2001-ES; 2003-PID; 2006-ES	2	2001-2006	c. 2001; c. 20	555	BANK	ST		OTTAWA	210	ISABELLA	ST			41230103	OLD OTTAWA	444120				127.1319026	990.5507055	
4258	HULL CEMENT & LIME WORKS	Hydraulic Cement Industry	1900-M	2	1900	c. 1900	552	BANK	ST		OTTAWA	534	BANK	ST			41220613	OLD OTTAWA	327310; 327410	352; 358; 359			138.4552793	1162.215394	
4260	MC AULIFFE-GRIMES LUMBER CO LIMITED	Sawmill, Planing Mill and Shingle Mill Products Industries	1900-M; 1912-1956-M; 1950-M	1	1900-1950	c. 1900; c. 19	488	METCALFE	ST		OTTAWA	480	METCALFE	ST		K1S3N6	41230135	OLD OTTAWA	321111; 321112	251			225.4711662	3159.863551	
4261	AIR CADETS 832 SQUADRON	Other services (except public administration)	2006-ES	2	2006	ES 2006	424	METCALFE	ST			464	METCALFE	ST		K2P0P3	41230142	OLD OTTAWA	813990				359.6172042	6827.176774	
4262	MODERN NIAGARA BUILDING SERVICES	Real estate and rental and leasing	2016-PID	1	2016	PID2016	464	METCALFE	ST		OTTAWA	464	METCALFE	ST		K2P0P3	41230142	OLD OTTAWA	531310				359.6172042	6827.176774	
4273	LOUDMOUTH PRINTHOUSE	Manufacturing	2012-ES; 2017-SalesGenie	1	2012-2017	ES 2012	5	ARLINGTON	AVE			502	BANK	ST		K2P1Z4	41220199	OLD OTTAWA	323113				98.86100572	587.1884469	
4274	BLUE CROSS HOSPITAL	Hospitals	1930-M; 1940-M	2	1900-1950	c. 1930-1940	5	ARLINGTON	AVE		OTTAWA	502	BANK	ST		K2P1Z4	41220199	OLD OTTAWA	622111; 622112	861			98.86100572	587.1884469	
4275	HOWARD AND SMITH	Jewellery and Precious Metal Industries	1900-M; 1910-M; 1920-M	2	1910-1920	c. 1910-1920	5	ARLINGTON	ST		OTTAWA	502	BANK	ST		K2P1Z4	41220199	OLD OTTAWA	331490		Company not in existence in 1930, 1940, 1950.		98.86100572	587.1884469	
4276	MCR SIGNS	Sign and Display Industry	2001-ES; 2005-SelectPhone	1	2005	c. 2001; c. 20	502	BANK	ST			502	BANK	ST		K2P1Z4	41220199	OLD OTTAWA	339950				98.86100572	587.1884469	
4277	SUNY'S GAS BAR	Gas	1990-CD	1	1990	CD 1990	512	BANK	ST			512	BANK	ST		K2P1Z6	41220200	OLD OTTAWA					183.1898004	1826.93745	
4278	MACEWEN PETROLEUM INC	Gasoline Service Stations	2001-ES; 2005-SelectPhone; 20	1	2001-2017	ES 2001; ES	512	BANK	ST			512	BANK	ST		K2P1Z6	41220200	OLD OTTAWA	441120; 447110; 447190; 811111				183.1898004	1826.93745	
4279	DAVID WHITE AUTO SALES	Retail trade	2001-ES; 2006-ES; 2012-ES	1	2001-2012	ES 2001; ES	512	BANK	ST			512	BANK	ST		K2P1Z6	41220200	OLD OTTAWA	441120; 447110; 447190; 811111				183.1898004	1826.93745	
4280	SILVER AUTOMOTIVE LTD	Motor Vehicles, Wholesale	2001-ES; 2006-ES; 2012-ES	1	2001-2012	ES 2001; ES	512	BANK	ST			512	BANK	ST		K2P1Z6	41220200	OLD OTTAWA	441120; 447110; 447190; 811111				183.1898004	1826.93745	
4281	WEAR ELSE LAUNDROMAT AND CAFE	Laundries and Cleaners	1998-SC	1	1998	c. 1998	512	BANK	ST		OTTAWA	512	BANK	ST		K2P1Z6	41220200	OLD OTTAWA	561740; 812310	972			183.1898004	1826.93745	
4282	BILL CANE'S GARAGE	Motor Vehicle Repair Shops	1956-M	1	1956		223	CATHERINE	ST		OTTAWA	28	ARLINGTON	AVE		K2P1C2	41220638	Old Ottawa					183.1898004	1826.93745	
4283	SERVICE STATION, SUBWAY	Gasoline Service Station	1934-CityofOttawa	2	1934	c. 1934	524	BANK	ST			512	BANK	ST		K2P1Z6	41220200	OLD OTTAWA					183.1898004	1826.93745	
4286	UNNAMED AUTO PAINT SHOP	Motor Vehicle Repair Shops	1922-FIP-66-467; 1948-FIP-131-	1	1901-1957	c. 1922-1956	84	FLORA	ST		OTTAWA	84	FLORA	ST		K2P1A8	41220209	OLD OTTAWA	811112; 811119	635			70.49274262	152.2288022	
4304	FIRST STUDENT	Transportation and warehousing	2012-ES	1	2012	ES 2012	265	CATHERINE	ST			265	CATHERINE	ST		K1R7S5	41220408	OLD OTTAWA	485410; 485510				463.2067608	10345.60225	
4305	VOYAGEUR COLONIAL LIMITED	Public Passenger Transit Systems Industries	2000-PID; 2001-ES; 2005-Select	1	1970-2006	c. 1994; c. 20	265	CATHERINE	ST		OTTAWA	265	CATHERINE	ST		K1R7S5	41220408	OLD OTTAWA	485110; 485210	457			463.2067608	10345.60225	
4306	GREYHOUND CANADA	Public Passenger Transit Systems Industries	2001-ES; 2003-PID; 2005-Select	1	2001-2017	PID2016	265	CATHERINE	ST		OTTAWA	265	CATHERINE	ST		K1R7S5	41220408	OLD OTTAWA	485990; 487110				463.2067608	10345.60225	
4307	OTTAWA BUS CENTRAL STATION INC	Bus Lines	2017-SalesGenie	1	2017	SalesGenie 2017					OTTAWA	265	CATHERINE	ST		K1R7S5	41220408	OLD OTTAWA	48521001	Jan-31			463.2067608	10345.60225	
4317	MOSSMAN'S APPLIANCE PARTS LTD	Appliance Parts	2004-GWStudy	1	1983	GW Study 2004 Scotts					OTTAWA	578	BANK	ST		K1S3T3	41340123	OLD OTTAWA	414220	5064	578 Bank St		89.30116607	376.2257759	
4318	CLONES SOCIETY THE	Electrical and Electronic Machinery, Equipment And Supplies, Wholesale	2001-ES	1	2001	c. 2001	30	CHAMBERLAIN	AVE		OTTAWA	30	CHAMBERLAIN	AVE		K1S1V9	41340128	OLD OTTAWA	443120				119.7373348	895.5642084	
4319	CROWN LAUNDRY	Laundries and Cleaners	1912-FIP-73-494; 1922-FIP-73-4	1	1912-1956	c. 1912-1956	0	CHAMBERLAIN	AVE		OTTAWA	30	CHAMBERLAIN	AVE		K1S1V9	41340128	OLD OTTAWA	561740; 812310	972		30 to 34; M. 1956 - lists 30 - 40 Scarfe & Co. Ltd. - Ottawa branch paints		91.60952489	465.1632003
4320	ITE CIRCUIT BREAKER CANADA LIMITED	Other Electrical Products Industries	1970-M	1	1960-1980	c. 1970	30	CHAMBERLAIN	AVE		OTTAWA	30	CHAMBERLAIN	AVE		K1S1V9	41340128	OLD OTTAWA	335910	339			119.7373348	895.5642084	
4321	P O'BRIEN MECHANICAL SERVICE LIMITED	Highway and Heavy Construction	2001-ES; 2005-SelectPhone; 20	1	2001-2006	c. 2001; c. 20	44	CHAMBERLAIN	AVE			42	CHAMBERLAIN	AVE		K1S1V9	41340130	OLD OTTAWA	238210; 238220; 238910; 811111				104.9595826	669.7009517	
4322	SCARABELLI E H (1975) INC	Mechanical Specialty Work	2001-ES	1																					

OBJECTID	ACTIVITY_NAME	FACILITY_TYPE	SOURCE_UPDATE_SORTED	QAQC	YEAR	YEAR_1	ST_NUM	ST_NAME	ST_SUFFIX	ST_DIR	MUNICIPALI TY	ST_NUM201 7	ST_NAME2017	ST_SUFFIX2 017	ST_DIR2017	POSTAL_CO DE2017	PIN2017	MUNICIPALITY2017	NAICS	SIC	COMMENTS	STORAGE_TANK	Shape_Length	Shape_Area
4332	GLEBE BODY AND FENDER SHOP TONY'S CUSTOM TAILOR AND CLEANERS	Motor Vehicle Repair Shops	1940-M	2	1940	c. 1940	216	PRETORIA	AVE		OTTAWA	216	PRETORIA	AVE		K1S1X2	41330003	OLD OTTAWA	811112; 811119	635			83.73393072	339.012146
4333		Laundries and Cleaners	1960-M	1	1960-1980	c. 1960	594	BANK	ST		OTTAWA	600	BANK	ST		K1S3T6	41340094	OLD OTTAWA	561740; 812310	972			153.3592956	1400.710571
4334	C H PETCH AND SONS LIMITED	Canvas and Related Products Industry	1910-M; 1912-FIP-145-791B; 19	1	1900-1965	c. 1910-1912	222	STRATHCONA	AVE		OTTAWA	222	STRATHCONA	AVE		K1S1X8	41330056	OLD OTTAWA	314910	193	222 to 224; Tent Factory -Tarpaulins and Flags		55.54991193	180.5199085
4710	HARDWARE & MACHINERY SUPPLY CO	Petroleum Products, Wholesale	1949-1956-M	2	1949-1956			ISABELLA	ST		OTTAWA	0					41220640				historical street current HWY 417	1030.450611	21971.36686	
4711	RIDEAU DISTRIBUTORS LTD	Petroleum Products, Wholesale	1948-M	1	1948			ISABELLA	ST		OTTAWA	0					41220640				historical street current HWY 417	1030.450611	21971.36686	
4734	ROSS W O'HARA	Motor Vehicle Repair Shops	1920-M	1	1920		223	CATHERINE	ST		OTTAWA	28	ARLINGTON	AVE		K2P1C2	41220638	Old Ottawa					183.1898004	1826.93745
4735	SCOTTY'S GARAGE	Motor Vehicle Repair Shops	1960-M	1	1960		223	CATHERINE	ST		OTTAWA	28	ARLINGTON	AVE		K2P1C2	41220638	Old Ottawa					183.1898004	1826.93745
4736	LEWIS MOTORS LTD GARAGE	Motor Vehicle Repair Shops	1920-M; 1922-FIP-74-468; 1930-	2	1900-1980	c. 1920; c. 19	223	CATHERINE	ST		OTTAWA	512	BANK	ST		K2P1Z6	41220200	OLD OTTAWA	811112; 811119	635	No number in 1900, 1910. Company not there in 1930, 1940, 1950.		183.1898004	1826.93745
4796	DAVIS AUCTION CO	Motor Vehicle Repair Shops	1922-1948-M	1	1922-1948		235	CATHERINE	ST		OTTAWA	28	ARLINGTON	AVE		K2P1C2	41220638	OLD OTTAWA					105.3107418	674.0728431
4797	JOHN C BRENNAN	Motor Vehicle Repair Shops	1930-M	1	1930		235	CATHERINE	ST		OTTAWA	28	ARLINGTON	AVE		K2P1C2	41220638	OLD OTTAWA					105.3107418	674.0728431
4798	LAURENTIAN MOTORS LTD	Motor Vehicle Repair Shops	1930-M	1	1930		235	CATHERINE	ST		OTTAWA	28	ARLINGTON	AVE		K2P1C2	41220638	OLD OTTAWA					105.3107418	674.0728431
4799	TRI-GRAPHIC PRINTING CO LIMITED	Commercial Printing Industries	1970-M	1	1960-1980	c. 1970	235	CATHERINE	ST		OTTAWA	28	ARLINGTON	AVE		K2P1C2	41220638	OLD OTTAWA	323114; 323115	281			105.3107418	674.0728431
4854	CARSWELL FURNACES LIMITED	Plumbing, Heating and Air Conditioning, Mechanical Work	1958-M; 1958-S; 1961-M; 1961-S	2	1958-1965	c. 1958-1961	29	CHAMBERLAIN	AVE		OTTAWA	0					41220533		238220; 333310	307; 424			111.2141288	500.200648
4896	MCLEOD BROTHERS (1948)	Motor Vehicle Repair Shops	1948-M	1	1948		231	CATHERINE	ST		OTTAWA	28	ARLINGTON	AVE		K2P1C2	41220638	Old Ottawa					104.9128948	669.5555973
4897	SAM HALLIDAY AUTO REPAIR GARAGE (1912)	Motor Vehicle Repair Shops	1910-1920-M	1	1910-1920		231	CATHERINE	ST		OTTAWA	28	ARLINGTON	AVE		K2P1C2	41220638	Old Ottawa					104.9128948	669.5555973
4898	BUCK MOTORS GARAGE	Motor Vehicle Repair Shops	1910-M; 1912-FIP-74-468; 1920-	1	1900-1980	c. 1910-1920	231	CATHERINE	ST		OTTAWA	28	ARLINGTON	AVE		K2P1C2	41220638	OLD OTTAWA	336110; 811112	323; 635	Tanks not present FIP1912 &FIP1922. Carriage Builder located here in 1910, 1920	2, underground (1948)	104.9128948	669.5555973
4903	BUILDERS WHOLESALE SUPPLIES	Lumber and Building Materials, Wholesale	1948-1956-M; 1956-FIP-132-491	1	1948-1956		105	CHAMBERLAIN	ST		OTTAWA	0					41220640						409.8605959	8926.982162
4904	MAYNO DAVIS LUMBER CO LTD	Lumber and Building Materials, Wholesale	1930-M; 1956-FIP-132-491	1	1930		105	CHAMBERLAIN	ST		OTTAWA	0					41220640						409.8605959	8926.982162
4982	TED W DUPONT SERVICE STATION	Motor Vehicle Repair Shops	1955-1956-M	1	1955-1956		210	CATHERINE	ST	EAST	OTTAWA	210	CATHERINE	ST		K2P2K9	41230141	OTTAWA					134.295154	1069.381614
4984	ASH TEMPLE LIMITED	Other Manufactured Products Industries	1980-M	1	1960-1980	c. 1980	485	BANK	ST		OTTAWA	473	BANK	ST		K2P1Z2	41230003	OLD OTTAWA	334610	399			112.6759522	778.9277943
17422	SHAMAR MAINTENANCE INC	Administrative and support, waste management and remediation services	2001-ES; 2006-ES	2			485	BANK	ST			473	BANK	ST		K2P1Z2	41230003	OLD OTTAWA	561722				252.5321738	2468.34945
17423	SILVERTRUST COMMUNICATIONS	Information and cultural industries	2001-ES; 2006-ES	2			485	BANK	ST			473	BANK	ST		K2P1Z2	41230003	OLD OTTAWA	512110				252.5321738	2468.34945
17424	TOMLINSON LIFT INC	Real estate and rental and leasing	2006-ES	2			585	BANK	ST			581	BANK	ST		K1S3T4	41330001	OLD OTTAWA	532410				124.8162624	968.2741985
17433	AMERICAN HARDWOOD CO	Sawmill, Planing Mill and Shingle Mill Products Industries	1901-FIP-64-784	1	1901		260	CATHERINE	ST			240	CATHERINE	ST									126.3851972	898.1481177
17434	BARRET BROS	Sawmill, Planing Mill and Shingle Mill Products Industries	1912-FIP-73-493	1	1912		260	CATHERINE	ST			240	CATHERINE	ST									195.5408142	2340.074819
17468	NATIONAL PRINTERS LIMITED	Commercial Printing Industries	1901-FIP-67-475A; 1912-FIP-75-	1	1920-1956	c. 1940-1956	439	O'CONNOR	ST		OTTAWA	180	ARGYLE	AVE		K2P1B7	41230053	OLD OTTAWA	323114; 323115	281; 282	437-443; Company listed at #439-443 in 1930		121.8209351	404.7829574
17481	QUEEN CITY OIL CO	Petroleum Products, Wholesale	1900-M; 1901-FIP-64-784	1	1900-1910		556	BANK	ST		OTTAWA	0					41220640				historical street current HWY 417	158.9080319	1519.910173	
17497	THE SAMIEL ROGERS OIL CO	Petroleum Products, Wholesale	1901-FIP-64-785; 1988-Intera	1	1900		60	ISABELLA	ST		OTTAWA	0					41220640				historical street current HWY 417	183.5952299	1258.33147	
17531	FIRE STATION No9	Fire Station	1901-FIP-92-791A	1				JANE	ST														125.2639229	956.1073144
17791	CHARLES SARIM GREEN HOUSE	Greenhouse	1912-FIP-740471	1																			280.0353166	4339.406112
17868	CAMPBELL PUMP SERVICE	Gasoline Service Stations	1960-M; 1970-M	2	1960-1980	c. 1960-1970	88	ISABELLA	STREET		OTTAWA	480	METCALFE	ST		K1S3N6			447110; 447190	633			91.39052347	446.8657253

OBJECTID	ACTIVITY_NAME	FACILITY_TYPE	TANK_LOCATION	TANK_CONTENT	TANK_SIZE	TANK_TYPE	TANK_STATUS	SOURCE	INSTALLED_ST_NUM	INSTALLED_ST_NAME	INSTALLER	INSTALLATION_DATE	COMMENT	MTM_X	MTM_Y	IMAGE_MAP	IMAGE_CERTAINTY	IMAGE_MAP_2	TANK_MATERIAL	TANK_ID	TANK_LEAKING	TANK_REMOVED	REMOVED_DATE	DATE_INSTALLED	NATURE_OF_BUSINESS	SCANNED_DRAWING	TEMPERATURE	CAPACITY_UOM	MUNICIPALITY	POSTCODE	
150			UST		2088.4			FIP1948; FIP1956	5	ARLINGTON	AVE		historical address - 5 Arlington Ave	367981.5863	5030338.516	Volume1-131.jpg	1	131.jpg													
153	GARAGE	Garage	UST					FIP1956	212	CATHERINE			historical address - 212 Catherine	368155.9471	5030314.439	Volume1-133.jpg	1														
154	GARAGE	Garage	UST					FIP1956	212	CATHERINE			historical address - 212 Catherine	368157.7992	5030315.497	Volume1-133.jpg	1														
155	GASOLINE SERVICE STATION	Gasoline Service Station	UST					FIP1948; FIP1956	210	CATHERINE			historical address - 210 Catherine	368186.3742	5030325.551	Volume1-133.jpg	1	133.jpg													
156	GASOLINE SERVICE STATION	Gasoline Service Station	UST					FIP1948; FIP1956	210	CATHERINE			historical address - 210 Catherine	368187.9617	5030326.345	Volume1-133.jpg	1	133.jpg													
157	GASOLINE SERVICE STATION	Gasoline Service Station	UST					FIP1948; FIP1956	234	CATHERINE			historical address - 234 Catherine	368008.5739	5030223.687	Volume1-133.jpg	1	133.jpg													
158	GASOLINE SERVICE STATION	Gasoline Service Station	UST					FIP1948; FIP1956	234	CATHERINE			historical address - 234 Catherine	368007.251	5030226.068	Volume1-133.jpg	1	133.jpg													
174	GASOLINE SERVICE STATION	Gasoline Service Station	UST		2270			FIP1948; FIP1956	640	BANK	ST		historical address - 640 Bank St	368168.1026	5029927.095	Volume1-135-2.jpg	1	135.jpg													
176	GASOLINE SERVICE STATION	Gasoline Service Station	UST					FIP1948; FIP1956	615	BANK	ST		historical address - 615 Bank St	368163.554	5030018.672	Volume1-136.jpg	1	136.jpg													
177	GASOLINE SERVICE STATION	Gasoline Service Station	UST					FIP1948; FIP1956	615	BANK	ST		historical address - 615 Bank St	368164.5135	5030016.37	Volume1-136.jpg	1	136.jpg													
178	UNION ELECTRIC SUPPLY COMPANY		UST					FIP1948; FIP1956	601	BANK	ST		historical address - 601& 603 Bank St	368167.9676	5030058.011	Volume1-136.jpg	1	136.jpg													
179	UNION ELECTRIC SUPPLY COMPANY		UST					FIP1948; FIP1956	601	BANK	ST		historical address - 601& 603 Bank St	368166.8163	5030057.052	Volume1-136.jpg	1	136.jpg													
869			UST		1135			FIP1948	524	BANK	ST		historical address - 524 Bank St	368017.7482	5030269.003	133.jpg															
870			UST					FIP1948	524	BANK	ST		historical address - 524 Bank St	368017.3249	5030292.286	133.jpg															
1896			UST	fuel oil				ROW	502	BANK	ST			367982.2953	5030348.07					ST7426					1 tank						
2001	UNION ELEC. SUPPLY CO LTD		UST	fuel oil				ROW	601	BANK	ST			368155.0761	5030057.417					ST7535					2 tanks						
2002	UNION ELEC. SUPPLY CO LTD		UST	fuel oil				ROW	601	BANK	ST			368155.0761	5030057.417					ST7536					2 tanks						
2003			UST	fuel oil				ROW	617	BANK	ST			368170.8274	5030018.555					ST7537					2 tanks						
2032			UST	fuel oil				ROW	200	CATHERINE	ST			368113.6221	5030278.984					ST7567					2 tanks						
2033			UST	fuel oil				ROW	240	CATHERINE	ST			367988.5834	5030202.302					ST7568					2 tanks						
2124			UST	fuel oil				ROW	617	BANK	ST			368170.8274	5030018.555					ST7660					2 tanks						
2153			UST	fuel oil				ROW	200	CATHERINE	ST			368113.6221	5030278.984					ST7690					2 tanks						
2154			UST	fuel oil				ROW	240	CATHERINE	ST			367988.5834	5030202.302					ST7691					2 tanks						
4178	S W HALLIDAY		not specified	gasoline	2270	Permit		Bylaw No. 8022	28	ARLINGTON	AVE			367944.779	5030257.286					ST1138				17/05/1920							
4179	S W HALLIDAY		not specified	gasoline	1135	Permit		Bylaw No. 8022	28	ARLINGTON	AVE			367944.779	5030257.286					ST1137				19/06/1922							
4180	S W HALLIDAY		not specified	gasoline	1066.9	Permit		Bylaw No. 8022	28	ARLINGTON	AVE			367944.779	5030257.286					ST1136				21/05/1923							
4181	HALLIDAY'S GARAGE - L J HENDERSON - SHELL		UST	gasoline	2270	Permit		Bylaw No. 8022	28	ARLINGTON	AVE			367944.779	5030257.286					ST1135				03/10/1932							
4182	HALLIDAY'S GARAGE - L J HENDERSON - SHELL		UST	gasoline	2270	Permit		Bylaw No. 8022	28	ARLINGTON	AVE			367944.779	5030257.286					ST2123				03/10/1932							
4185	STEWARTON UNITED CHURCH		UST	fuel oil	4540	Permit		Bylaw No. 8022 - f	507	BANK	ST		tank likely installed at 258 argyle	368031.4307	5030354.734		3			ST0280				15/10/1951	one 1000 gal	Yes					
4186	RHODES & RADCLIFF		UST	fuel oil	4540	Permit		Bylaw No. 8022 - f	420	O'CONNOR	ST		address verified from 1960 city di	368177.2224	5030452.818		1			ST0282				05/12/1955	1 - 1000 fuel	Yes					
4187	FORBES SCHOOL - RCSSB		not specified	fuel oil	9080	Permit		Bylaw No. 8022 - f	254	ARGYLE	AVE			368073.7748	5030380.923					ST0284				16/08/1954	1 - 2000 gal tank						
4203	PARAMOUNT MOTORS		not specified	gasoline		Permit		Bylaw No. 8022	601	BANK	ST			368155.0761	5030057.417					ST2153				15/12/1930							
4204	PARAMOUNT MOTORS		not specified	gasoline		Permit		Bylaw No. 8022	601	BANK	ST			368155.0761	5030057.417					ST1210				15/12/1930							
4205	NATIONAL CHEVROLET MOTOR SALES		UST	gasoline		Permit		Bylaw No. 8022	601	BANK	ST			368155.0761	5030057.417					ST1211				08/08/1933							
4206	UNION ELECTRIC SUPPLY CO		AST	fuel oil	4540	Permit		Bylaw No. 8022 - f	601	BANK	ST		tank enclosed within masonry wa	368155.0761	5030057.417					ST0302				20/10/1952	1 - 1000 gal fuel oil						
4215	CROWN LAUNDRY		not specified	gasoline	2270	Permit		Bylaw No. 8022 - f	32	CHAMBERLAIN	AVE			367988.7904	5030050.039					ST1222				06/05/1940	install gas tank & pump						
4371	VENDALL MACHINES		not specified	fuel oil	4540	Permit		Bylaw No. 8022 - f	100	ISABELLA	ST		tank installed at rear of property f	368383.6312	5030330.132					ST0450				05/07/1948	1 - 1000 gal fuel oil tank						
4374	AMBASSADOR COURT APTS		AST	fuel oil	11350	Permit		Bylaw No. 304-60	612	BANK	ST		dwg shows tank located in forme	368120.2358	5029989.578	FR300-VAH600	1				ST3972				14/06/1961		Yes				
6833	R MCKENDRY					Existing		Bylaw No. 8022 - f	512	BANK	ST			368004.4191	5030292.831					ST3247				20/04/1936	replacement of visible pumps with electric meter-type						
6834	SUBWAY SERVICE STATION - SHELL					Existing		Bylaw No. 8022 - f	512	BANK	ST		replace pump address verified fro	368004.4191	5030292.831					ST3248				06/05/1940	install gas tank & pump						
6835	CITY QUEENSWAY TAXI LTD		UST	gasoline	22700	Permit		Bylaw No. 304-60	512	BANK	ST			368004.4191	5030292.831	FR300-VAH600	1				ST4265				07/05/1971		Yes				
6836	CITY QUEENSWAY TAXI LTD		UST	gasoline	22700	Existing	Active	Bylaw No. 304-60	512	BANK	ST			368004.4191	5030292.831	FR300-VAH600	1				ST4264	N	N		03/12/1970		Yes				
6837	CITY QUEENSWAY TAXI LTD		UST	gasoline	13620	Existing	Active	Bylaw No. 304-60	512	BANK	ST			368004.4191	5030292.831	FR300-VAH600	1				ST4963	N	N		03/12/1970		Yes				
6838	FULLER & MCKENDRY - SHELL		UST	gasoline	2270	Permit		Bylaw No. 8022	512	BANK	ST			368004.4191	5030292.831					ST1096				19/06/1933							
6839	FULLER & MCKENDRY - SHELL		UST	gasoline	2270	Existing	Not active-	Bylaw No. 8022	512	BANK	ST			368004.4191	5030292.831					ST3103	N	Y		1933-006-19 0:00:00							
6911	IMPERIAL OIL					Existing		Bylaw No. 8022 - f	240	CATHERINE	ST		install pump near bank st; 236 ba	367988.5834	5030202.302					ST3255				05/07/1937	install pump						
6912	P NEWMAN		UST	gasoline	4540	Permit		Bylaw No. 8022 - f	240	CATHERINE	ST			367988.5834	5030202.302					ST1132				06/08/1946	install two 1000 gal gas tanks & two computer pumps						
6913	P NEWMAN		UST	gasoline	4540	Permit		Bylaw No. 8022 - f	240	CATHERINE	ST			367988.5834	5030202.302					ST2122				06/08/1946	install two 1000 gal gas tanks & two computer pumps						
6914	WRIGHT BROS SUPPLY - CANADIAN PETROFINA		UST	gasoline	9080	Permit		Bylaw No. 8022 - f	240	CATHERINE	ST		250 catherine st historic address	367988.5834	5030202.302					ST1130				16/02/1959	1 - 2000 gasoline UST						
6915	WRIGHT & CO YARD		not specified	gasoline	2270	Permit		Bylaw No. 8022	240	CATHERINE	ST			367988.5834	5030202.302					ST1129				04/05/1925							
6916	DOMESTIC STORAGE & FORWARDING		not specified	gasoline	4540	Permit		Bylaw No. 8022	240	CATHERINE	ST			367988.5834	5030202.302					ST1131				02/04/1929							
6917	H FITZSIMONS		UST	gasoline		Permit		Bylaw No. 8022	240	CATHERINE	ST			367988.5834	5030202.302					ST1133				16/01/1928							
6918	IMPERIAL OIL		not specified	gasoline	2270	Permit		Bylaw No. 8022	240	CATHERINE	ST			367988.5834	5030202.302					ST1134				21/03/1932							
6919	DOMESTIC STORAGE & FORWARDING		not specified	gasoline	4540	Permit		Bylaw No. 8022	240	CATHERINE	ST			367988.5834	5030202.302					ST2121				02/04/1929							
6920	H FITZSIMONS		UST	oil		Permit		Bylaw No. 8022	240	CATHERINE	ST			367988.5834	5030202.302					ST2353				16/01/1928							
6921	DOMESTIC STORAGE & FORWARDING		not specified	gasoline	4540	Permit		Bylaw No. 8022	240	CATHERINE	ST			367988.5834	5030202.302					ST2546				02/04/1929							
6922	DOMESTIC STORAGE & FORWARDING		not specified	gasoline	4540	Permit		Bylaw No.																							

OBJECTID	ACTIVITY_NAME	FACILITY_TYPE	TANK_LOCATION	TANK_CONTENT	TANK_SIZE	TANK_TYPE	TANK_STATUS	SOURCE	INSTALLED_ST_NUM	INSTALLED_ST_NAME	INSTALLED_ST_ADDRESS	INSTALLED_ST_DIRECTION	COMMENT	MTM_X	MTM_Y	IMAGE_MAP	IMAGE_CERTAINTY	IMAGE_MAP_2	TANK_MATERIAL	TANK_ID	TANK_LEAKING	TANK_REMOVED	REMOVED_DATE	DATE_INSTALLED	NATURE_OF_BUSINESS	SCANNED_DRAWING	TEMPERATURE	CAPACITY_UOM	MUNICIPALITY	POSTCODE
6928	NATIONAL DRUG & CHEMICAL CO		not specified	fuel oil	4540	Permit		Bylaw No. 8022 - f	205	CATHERINE	ST		near bank st - tank at rear of prop	368070.04	5030324.985					ST0281				05/08/1947	1 - 1000 gal gas tank					
6929	GLENVIEW REALTY		UST	fuel oil		Permit		Bylaw No. 304-60	205	CATHERINE	ST			368070.04	5030324.985					ST3787				18/10/1974						
6930	BEACH MOTORS - IMPERIAL OIL		UST	gasoline	4540	Permit		Bylaw No. 8022 - f	200	CATHERINE	ST			368113.6221	5030278.984					ST1146				18/11/1935	1 - 1000 gal gasoline tank & electric meter pump					
6931	BEACH BUILDING					Existing		Bylaw No. 304-60	200	CATHERINE	ST		dwg shows 2 uests (size & conten	368113.6221	5030278.984	FR300-VAH610	1			ST6214				12/11/1964		Yes				
6932	THE BEACH BLDG CAN FORCES BASE OTTAWA		UST	gasoline	4540	Permit		Bylaw No. 304-60	200	CATHERINE	ST		214 catherine st historic address.	368113.6221	5030278.984	FR300-VAH600	1			ST4273				18/03/1974		Yes				
6933	THE BEACH BLDG CAN FORCES BASE OTTAWA		UST	gasoline	4540	Existing	Active	Bylaw No. 304-60	200	CATHERINE	ST		214 catherine st historic address.	368113.6221	5030278.984	FR300-VAH600	1			ST1144	N	N		17/03/1947		Yes				
6934	THE BEACH BLDG CAN FORCES BASE OTTAWA		UST	gasoline	4540	Existing	Not active-	Bylaw No. 304-60	200	CATHERINE	ST		214 catherine st historic address.	368113.6221	5030278.984	FR300-VAH600	1			ST2126	N	Y	1974-003-18	17/03/1947		Yes				
6935	BEACH MOTORS		UST	gasoline	45400	Permit		Bylaw No. 8022	200	CATHERINE	ST			368113.6221	5030278.984					ST1145				03/07/1922						
6936	BEACH MOTORS		UST	gasoline	45400	Permit		Bylaw No. 8022	200	CATHERINE	ST			368113.6221	5030278.984					ST2127				03/07/1922						
6937	NORTHERN ELECTRIC CO LTD		UST	fuel oil	9080	Permit		Bylaw No. 304-60	141	CATHERINE	ST			368141.556	5030367.536	FR300-VAH600	1			ST3788				23/03/1966		Yes				
6938	NORTHERN ELECTRIC CO LTD		UST	fuel oil	22700	Existing	Not active-	Bylaw No. 304-60	141	CATHERINE	ST			368141.556	5030367.536	FR300-VAH600	1			ST0283	N	Y	1966-003-23	03/11/1947		Yes				
6939	OTTAWA YM-YWCA CENTRAL BUILDING		AST	fuel oil	27240	Permit		Bylaw No. 304-60	180	ARGYLE	ST		tanks located in basement listed	368252.6717	5030461.915	FR300-VAH610	2			ST3789				08/05/1968		Yes				
6940	OTTAWA YM-YWCA CENTRAL BUILDING		AST	fuel oil	27240	Permit		Bylaw No. 304-60	180	ARGYLE	ST		tanks located in basement listed	368252.6717	5030461.915	FR300-VAH610	2			ST4810				08/05/1968		Yes				
6975	MORRISON-LAMOTHE		UST	gasoline	2270	Permit		Bylaw No. 8022 - f	460	O'CONNOR	ST			368260.1471	5030239.994					ST1155				06/04/1936	1 - 500 gal tank & one electric pump					
6976	MORRISON-LAMOTHE		UST	gasoline	2270	Permit		Bylaw No. 8022 - f	460	O'CONNOR	ST		replaces permit for 158 isabella o	368260.1471	5030239.994					ST1156				04/05/1936	1 - 500 gal tank & electric pump					
6977	CFRA BROADCASTING LTD		UST	fuel oil	4540	Permit		Bylaw No. 304-60	460	O'CONNOR	ST			368260.1471	5030239.994	FR300-VAH600	2			ST3790				18/11/1965		Yes				
6978	KILLEANY PLACE		AST	fuel oil	27240	Permit		Bylaw No. 304-60	460	O'CONNOR	ST		tank located in basement, Killean	368260.1471	5030239.994	FR300-VAH600	2			ST3791				07/03/1975		Yes				
6979	SUNLIGHT OIL		UST	gasoline	45400	Existing	Not active-	Bylaw No. 8022 - f	136	CATHERINE	ST			368187.2814	5030329.921				1	ST7337	N	N (indicates	1955-010-03	06/09/1927	1 - 2000 gal	Yes				
6980	SUNLIGHT OIL		UST	gasoline	45400	Existing	Not active-	Bylaw No. 8022 - f	136	CATHERINE	ST			368187.2814	5030329.921				1	ST7339	N	N (indicates	1955-010-03	06/09/1927	1 - 2000 gal	Yes				
6981	SUNLIGHT OIL		UST	gasoline	9080	Permit		Bylaw No. 8022 - f	136	CATHERINE	ST			368187.2814	5030329.921				1	ST1159				21/11/1955	1 - 2000 gal	Yes				
6982	SUNLIGHT OIL		UST	gasoline	9080	Existing	Active	Bylaw No. 8022 - f	136	CATHERINE	ST			368187.2814	5030329.921				1	ST1158	N	N		03/10/1955	1 - 2000 gal	Yes				
6983	SUNLIGHT OIL		UST	gasoline	45400	Existing	Not active-	Bylaw No. 8022 - f	136	CATHERINE	ST			368187.2814	5030329.921				1	ST1143	N	N (indicates	1955-011-21	06/09/1927	1 - 2000 gal	Yes				
6984	SUNLIGHT OIL		UST	gasoline	45400	Existing	Not active-	Bylaw No. 8022 - f	136	CATHERINE	ST			368187.2814	5030329.921				1	ST2125	N	N (indicates	1955-011-21	06/09/1927	1 - 2000 gal	Yes				
6985	SUNLIGHT OIL		UST	gasoline	45400	Existing	Not active-	Bylaw No. 8022 - f	136	CATHERINE	ST			368187.2814	5030329.921				1	ST2547	N	N (indicates	1955-011-21	06/09/1927	1 - 2000 gal	Yes				
6986	SUNLIGHT OIL		UST	gasoline	45400	Existing	Not active-	Bylaw No. 8022 - f	136	CATHERINE	ST			368187.2814	5030329.921				1	ST2755	N	N (indicates	1955-011-21	06/09/1927	1 - 2000 gal	Yes				
6987	RAILWAYS - G P O'REILLY		UST	gasoline	45400	Permit		Bylaw No. 8022	136	CATHERINE	ST			368187.2814	5030329.921				1	ST1157				21/03/1932						
6988	RAILWAYS - G P O'REILLY		UST	gasoline	45400	Permit		Bylaw No. 8022	136	CATHERINE	ST			368187.2814	5030329.921				1	ST2133				21/03/1932						
6989	RAILWAYS - G P O'REILLY		UST	gasoline	45400	Permit		Bylaw No. 8022	136	CATHERINE	ST			368187.2814	5030329.921				1	ST2552				21/03/1932						
8033	SUPERTEST					Existing		Bylaw No. 8022 - f	617	BANK	ST		replacement of pumps, Bank & P	368170.8274	5030018.555					ST3327				03/07/1939	gasoline pumps					
8034	SUPERTEST		not specified	gasoline	9080	Permit		Bylaw No. 8022 - f	617	BANK	ST			368170.8274	5030018.555					ST1671				07/04/1953	1 - 2000 gal gasoline					
8035	SUPERTEST		not specified	gasoline	9080	Permit		Bylaw No. 8022 - f	617	BANK	ST			368170.8274	5030018.555					ST1669				20/04/1954	2 - 2000 gasoline					
8036	SUPERTEST		not specified	gasoline	9080	Permit		Bylaw No. 8022 - f	617	BANK	ST			368170.8274	5030018.555					ST2328				20/04/1954	2 - 2000 gasoline					
8037	ECONO CAR RENTAL		UST	gasoline	9080	Permit		Bylaw No. 304-60	617	BANK	ST		and one pump island 615 bank st	368170.8274	5030018.555	FR300-VAH600	1			ST4559				07/06/1973		Yes				
8038	A CHRISTIE & SON		not specified	gasoline	2270	Permit		Bylaw No. 8022	617	BANK	ST			368170.8274	5030018.555					ST1667				20/10/1924						
8039	SUPERTEST		not specified	gasoline	4540	Permit		Bylaw No. 8022	617	BANK	ST			368170.8274	5030018.555					ST1668				18/07/1927						
8040	SUPERTEST		not specified	gasoline	4540	Permit		Bylaw No. 8022	617	BANK	ST			368170.8274	5030018.555					ST1670				16/08/1926						
8041	A CHRISTIE & SON		not specified	gasoline	2270	Permit		Bylaw No. 8022	617	BANK	ST			368170.8274	5030018.555					ST2326				20/10/1924						
8042	SUPERTEST		not specified	gasoline	4540	Permit		Bylaw No. 8022	617	BANK	ST			368170.8274	5030018.555					ST2327				18/07/1927						
8840	MACEWEN PETROLEUM INC	Gasoline Station-FS		gasoline	31820	Cancelled	Previous	GW Study 2004	512	BANK	ST	<Null>	512 BANK ST	368007.9248	5030317.323									19830401	Retail		972	L	OTTAWA	K2P 1Z6
8841	MACEWEN PETROLEUM INC	Gasoline Station-FS		gasoline	22730	Cancelled	Current	GW Study 2004	512	BANK	ST	<Null>	512 BANK ST	368007.9248	5030317.323									19830401	Retail		973	L	OTTAWA	K2P 1Z6
8842	MACEWEN PETROLEUM INC	Gasoline Station-FS		gasoline	22730	Cancelled	Current	GW Study 2004	512	BANK	ST	<Null>	512 BANK ST	368007.9248	5030317.323									19830401	Retail		974	L	OTTAWA	K2P 1Z6
8843	DAVID R COCHRANE	Gasoline Station-FS		gasoline	13640	Cancelled	Current	GW Study 2004	615	BANK	ST	<Null>	615 BANK ST	368166.3649	5030022.061									19830401	Retail		975	L	OTTAWA	K1S 3T5
10052	MACEWEN PETROLEUM INC	Gasoline Station-SS		gasoline	31820	Licenced	Current	GW Study 2004	512	BANK	ST	<Null>	512 BANK ST	368007.9248	5030317.323									19830401	Retail		2894	L	OTTAWA	K2P 1Z6
10053	MACEWEN PETROLEUM INC	Gasoline Station-SS		gasoline	22730	Licenced	Current	GW Study 2004	512	BANK	ST	<Null>	512 BANK ST	368007.9248	5030317.323									19830401	Retail		2895	L	OTTAWA	K2P 1Z6
10054	MACEWEN PETROLEUM INC	Gasoline Station-SS		gasoline	22730	Licenced	Current	GW Study 2004	512	BANK	ST	<Null>	512 BANK ST	368007.9248	5030317.323									19830401	Retail		2896	L	OTTAWA	K2P 1Z6