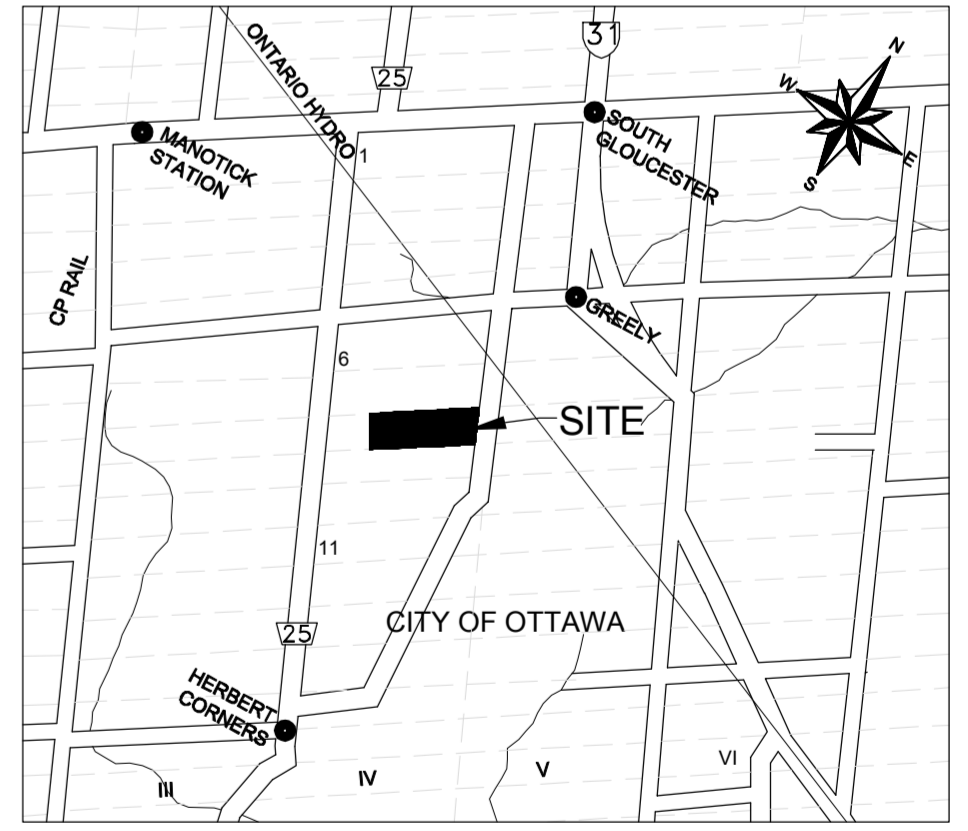


LEGEND

	PROPOSED LOT LINE
	LOT NUMBER
	PROPERTY LINE
	WATERMAIN CONNECTION LOCATION

- GENERAL NOTES**
- 1) Construction shall be in accordance with City of Ottawa standards and specifications and Ontario Provincial Standard drawings and specifications where applicable. Ontario Provincial Standards shall apply where no City standards are available. All drawings to be checked for confirmation with applicable building codes. No alteration or grading of site is to occur prior to approval by City.
 - 2) The contractor is responsible for all removals necessary to satisfy engineering and landscape works. Contractor to visit site prior to tendering and confirm site conditions. Contractor is responsible for obtaining all permits required and bear cost of same.
 - 3) Location of services are not all shown. Location of utilities and underground works that are shown are approximate. Contractor to verify location and elevation of all services, utilities and underground structures prior to any construction. The contractor is responsible for protection and reinstatement.
 - 4) The contractor shall implement Best Management Practices to provide for protection of the receiving storm sewer during construction activities. These practices are required to ensure no sediment and/or associated pollutants are released to the receiving watercourse. These practices include installation of sediment barriers on all catch basin and maintenance holes and a silt fence barrier (as per OPSD 219.110 and associated specifications) along all areas that sheet drain off site.
 - 5) All dimensions are in metres unless otherwise stated. Drawings should not be scaled by the contractor. Any missing or questionable dimensions are to be confirmed with the consultant in writing.

- REFERENCES**
1. TOPOGRAPHICAL AND SURVEY INFORMATION PROVIDED IN A DIGITAL FORMAT BY H.A.KEN SHIPMAN SURVEYING LTD. REF No. 05-1384, FILE No. 06-11-8744, DATED APRIL 22, 2010 AND OCTOBER 25, 2011.
 2. LAYOUT PLAN PROVIDED IN A DIGITAL FORMAT BY HOLZMAN CONSULTANTS INC., DRAWING NAME: SDP-01, DATED: FEBRUARY 28, 2012.



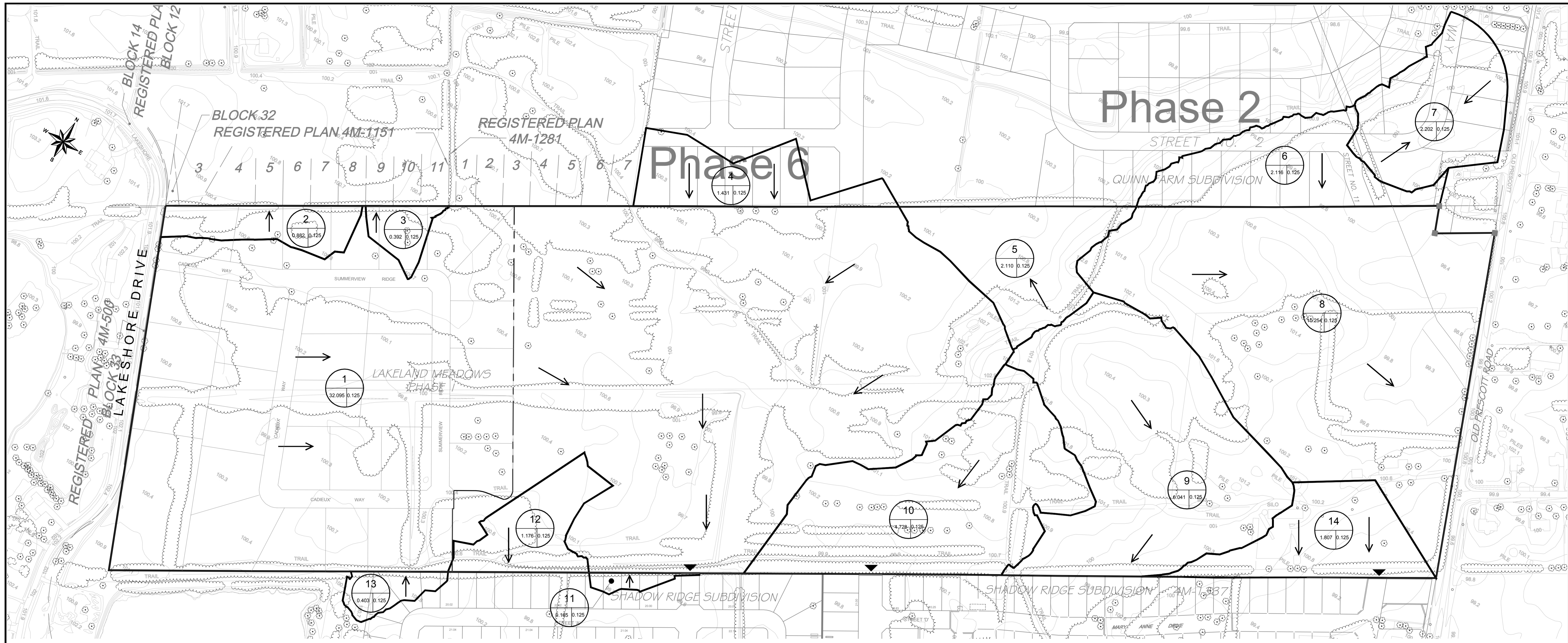
KEY PLAN
SCALE: N.T.S.



REV	DATE	DES	REVISION DESCRIPTION	CAD	CHK	RWW
1	04 March 2013	S.W.T.	REVISED PHASE 2 LAYOUT		M.L.F.	

<p>Golder Associates Ottawa, Ontario, Canada</p>		PROJECT No.	10-1125-0034	FILE No.	101250034-3000-SS1r2a.dwg
		DESIGN	S.W.T.	May 2012	SCALE
		CAD	M.L.F.	01 May 2012	DRAWING No.
		CHECK	S.W.T.	13 May 2013	10-0034-SS1
		REVIEW	D.V.K.	13 May 2013	

PLOT DATE: February 23, 2016
 FILENAME: N:\Active\2010\1125 - Land Engineering\10-1125-0034 - Lakeland Meadows\10-1125-0034-3000-SS1r2a.dwg



LEGEND:

- DRAINAGE AREA BOUNDARY
- EXISTING DITCH
- DRAINAGE AREA I.D. No.
- RUNOFF COEFFICIENT (1:100 yr)
- AREA (ha)
- DRAINAGE DIRECTION



TO BE READ IN CONJUNCTION WITH THE FOLLOWING DRAWINGS
 1) POST-DEVELOPMENT DRAINAGE PLAN DWG No. 10-0034-PD2

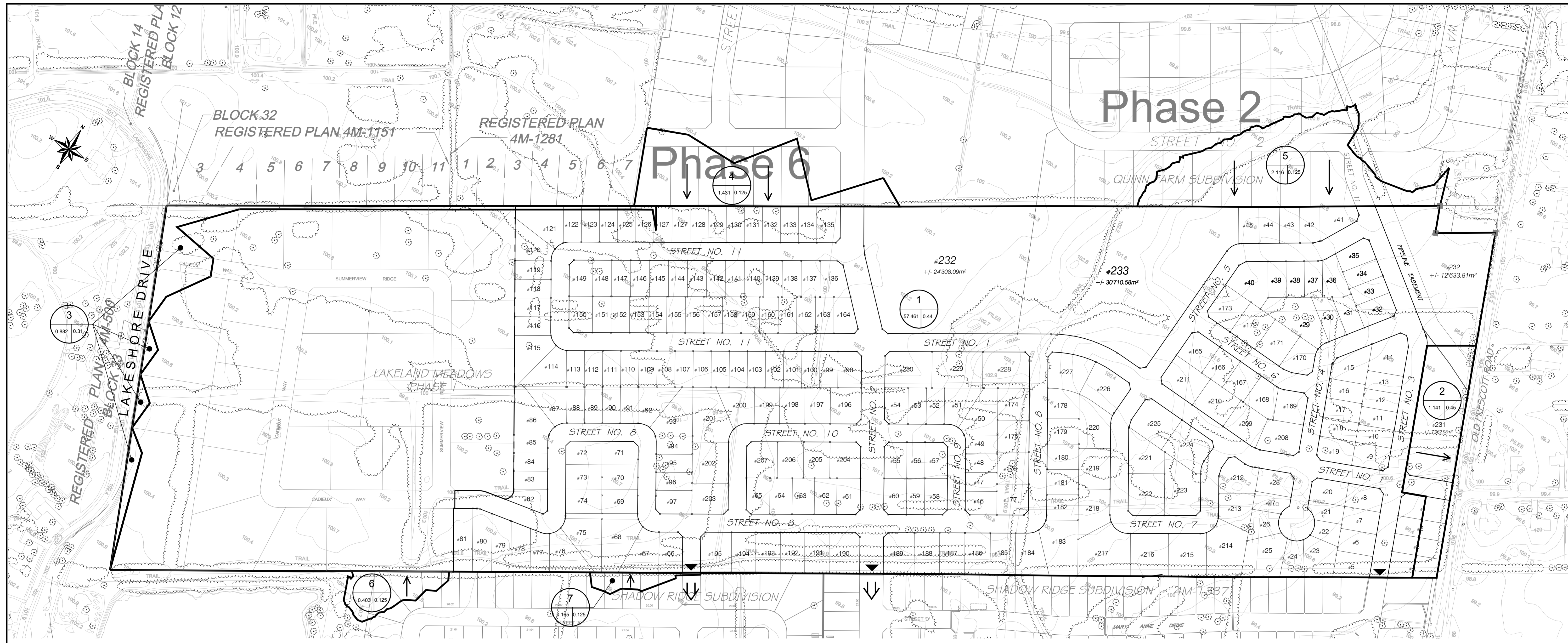
REV	DATE	DES	S.W.T.	REVISION DESCRIPTION	M.L.F.	CAD	CHK	RWW
	04 March 2013		S.W.T.	REVISED PHASE 2 LAYOUT				

PROJECT: LAKELAND MEADOWS LTD.
 LAKELAND MEADOWS SUBDIVISION - PHASE 2
 OTTAWA, ONTARIO

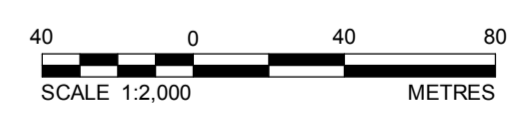
TITLE: **PRE-DEVELOPMENT DRAINAGE PLAN**

<p>Golder Associates Ottawa, Ontario, Canada</p>	PROJECT No.	10-1125-0034	FILE No.	101250034-3000-SS1r2a.dwg
	DESIGN	D.L.K.H. May 2012	SCALE	1:2,000 REV. 0
	CAD	M.L.F. May 2012	DRAWING No.	
	CHECK	S.W.T. May 2012		
	REVIEW	D.V.K. May 2012		

PLOT DATE: February 23, 2016
 FILENAME: N:\Active\2013\1125-0034 - Lakeland Meadows\CAD\Phase 2000\101250034-3000-SS1r2a.dwg
 L:\Engineering\1125-0034 - Lakeland Meadows\CAD\Phase 2000\101250034-3000-SS1r2a.dwg



- LEGEND:**
- DRAINAGE AREA BOUNDARY
 - MAJOR OVERLAND FLOW ROUTE
 - PROPOSED DITCH / SWALE AND FLOW DIRECTION
 - DRAINAGE AREA I.D. No.
 - RUNOFF COEFFICIENT (1:100 yr)
 - AREA (ha)
 - DRAINAGE DIRECTION



TO BE READ IN CONJUNCTION WITH THE FOLLOWING DRAWINGS
 1) PRE-DEVELOPMENT DRAINAGE PLAN DWG No. 10-0034-PD1

REV	DATE	DES	S.W.T.	REVISION PHASE 2 LAYOUT	M.L.F.	CAD	CHK	RWW
-----	------	-----	--------	-------------------------	--------	-----	-----	-----

PROJECT: LAKELAND MEADOWS LTD.
 LAKELAND MEADOWS SUBDIVISION - PHASE 2
 OTTAWA, ONTARIO

TITLE: **POST-DEVELOPMENT DRAINAGE PLAN**

	PROJECT No.	10-1125-0034	FILE No.	101250034-3000-SS1r2a.dwg
	DESIGN	D.L.K.H. May 2012	SCALE	1:2,000 REV. 0
	CAD	M.L.F. May 2012	DRAWING No.	
	CHECK	S.W.T. May 2012		
	REVIEW	D.V.K. May 2012		

PLOT DATE: February 23, 2016
 FILENAME: N:\Active\2015\1125-0034 - Lakeland Meadows\CAD\Phase 2000\101250034-3000-SS1r2a.dwg