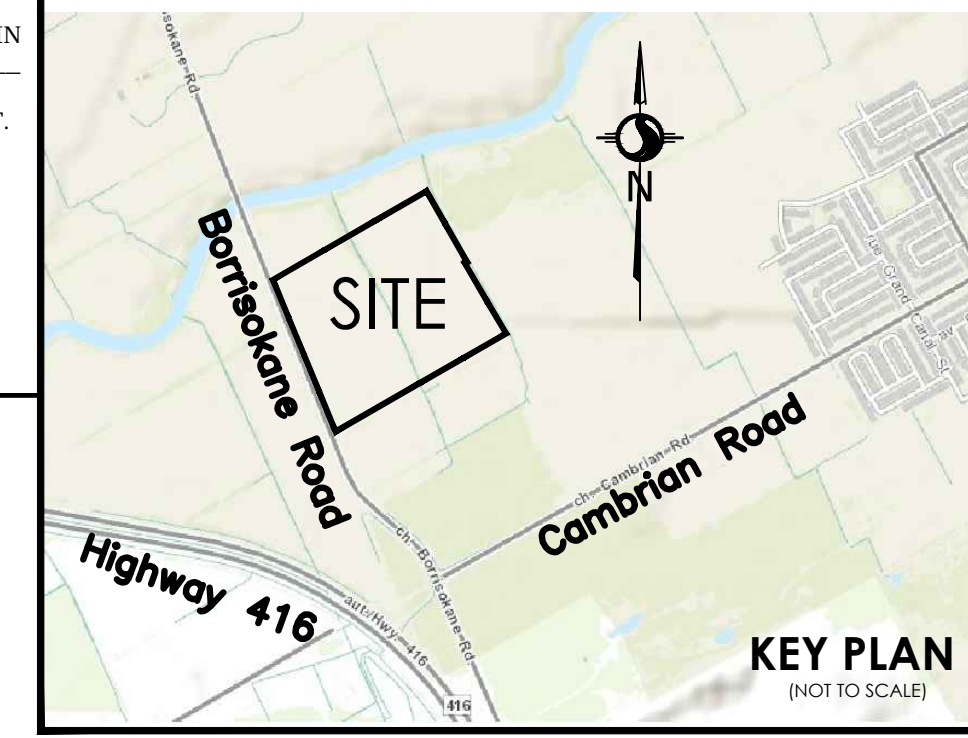


7 AUG 2017 10:10 AM



SUBJECT TO THE CONDITIONS, IF ANY, SET FORTH IN OUR LETTER DATED 20... THIS DRAFT PLAN IS APPROVED BY THE CITY OF OTTAWA UNDER SECTION 51 OF THE PLANNING ACT. THIS DAY OF 2017.



DRAFT PLAN OF SUBDIVISION OF PART OF LOT 12 CONCESSION 3 (RIDEAU FRONT) (GEOGRAPHIC TOWNSHIP OF NEPEAN) CITY OF OTTAWA

Scale 1:1000 METRIC CONVERSION DISTANCES AND COORDINATES SHOWN ON THIS PLAN ARE IN METRES AND CAN BE CONVERTED TO FEET BY DIVIDING BY 0.3048

SCHEDULE OF LAND USE table with columns: BLOCK, USE, UNITS, AREA (Ha/ac). Lists various blocks and their corresponding land use categories and areas.

INFORMATION: REQUIRED UNDER SECTION 51 (17) OF THE PLANNING ACT R.S.O. 1990. Includes a list of references (a-l) to various documents and reports.

OWNER'S CERTIFICATE. I HEREBY AUTHORIZE STANTEC GEOMATICS LTD. TO SUBMIT THIS DRAFT PLAN OF SUBDIVISION ON MY BEHALF. Includes signature line for Jacob Shabinsky.

OWNER'S CERTIFICATE. I HEREBY AUTHORIZE STANTEC GEOMATICS LTD. TO SUBMIT THIS DRAFT PLAN OF SUBDIVISION ON MY BEHALF. Includes signature line for Vice President, Land Development.

SURVEYOR'S CERTIFICATE. I HEREBY CERTIFY THAT THE BOUNDARIES OF THE SUBJECT LANDS AND THEIR RELATIONSHIP TO ADJOINING LANDS HAVE BEEN ACCURATELY AND CORRECTLY SHOWN.

SURVEYOR'S SIGNATURE: BRIAN J. WEBSTER, ONTARIO LAND SURVEYOR.

Stantec Geomatics Ltd. logo and contact information: 1331 CLYDE AVENUE, SUITE 400, OTTAWA, ONTARIO, K2C 3G4.