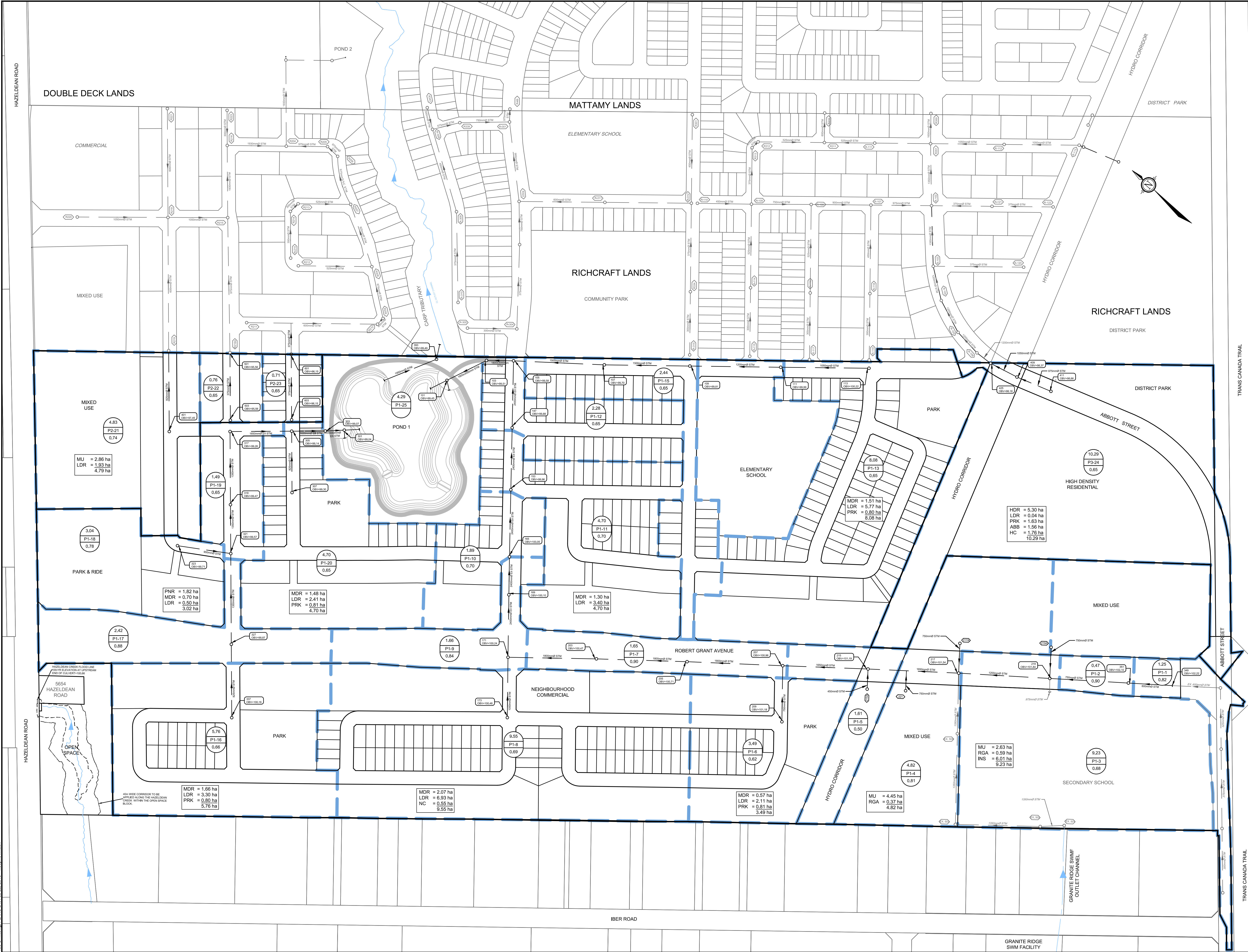


LEGEND

- 0.24 ha — AREA (hectares)
- 88a — AREA ID
- 0.65 — RUN-OFF COEFFICIENT
- STORM CATCHMENT
- STORM DRAINAGE AREA (LOCAL BOUNDARY)
- PROPOSED STORM MANHOLE & SEWER WITH DIRECTION OF FLOW
- FUTURE / EXISTING STORM MANHOLE & SEWER WITH DIRECTION OF FLOW

LAND USE ABBREVIATIONS:

- LDR = LOW DENSITY RESIDENTIAL
- MDR = MEDIUM DENSITY RESIDENTIAL
- HDR = HIGH DENSITY RESIDENTIAL
- MU = MIXED USE
- PRK = PARK
- HC = HYDRO CORRIDOR
- NC = NEIGHBOURHOOD COMMERCIAL
- INS = INSTITUTIONAL
- PNR = PARK N RIDE
- RGA = ROBERT GRANT AVENUE
- ABB = ABBOTT STREET



NOTE:
 THE POSITION OF ALL POLE LINES, CONDUITS, WATERMANS, SEWERS AND OTHER UNDERGROUND AND OVERGROUND UTILITIES AND STRUCTURES IS NOT NECESSARILY SHOWN ON THE CONTRACT DRAWINGS, AND WHERE SHOWN, THE ACCURACY OF THE POSITION OF SUCH UTILITIES AND STRUCTURES IS NOT GUARANTEED. BEFORE STARTING WORK, DETERMINE THE EXACT LOCATION OF ALL SUCH UTILITIES AND STRUCTURES AND ASSUME ALL LIABILITY FOR DAMAGE TO THEM.

No.	REVISION	DATE	BY
3.	DRAFT PLAN RESUBMISSION	FEB 23/18	MAB
2.	REVISED PER CITY AND MVCA COMMENTS	JUL 20/17	MAB
1.	DRAFT PLAN APPLICATION	NOV 9/16	MAB

SCALE	DESIGN	CHECKED	DRAWN	APPROVED
1:2000	LRW	MAB	DTD	MAB
0 20 40 60 80				JGR

FOR REVIEW ONLY

PROFESSIONAL ENGINEER
 L.R. WILSON
 10160065
 PROVINCE OF ONTARIO

PROFESSIONAL ENGINEER
 M.A. BISSETT
 2018, 02.13
 PROVINCE OF ONTARIO

NOVATECH
 Engineers, Planners & Landscape Architects
 Suite 200, 240 Michael Copland Drive
 Ottawa, Ontario, Canada K2M 1P6
 Telephone: (613) 254-9643
 Facsimile: (613) 254-5867
 Website: www.novatech-eng.com

CITY OF OTTAWA
 FERNBANK COMMUNITY - KIZELL LANDS

STORM DRAINAGE AREA PLAN

PROJECT No. 108195
 REV # 3
 DRAWING No. 108195-STM

C:\Users\108195\Documents\CAD\108195-STM.dwg, P1_ANS.B1, Feb 22, 2018, 4:23pm, Nelson