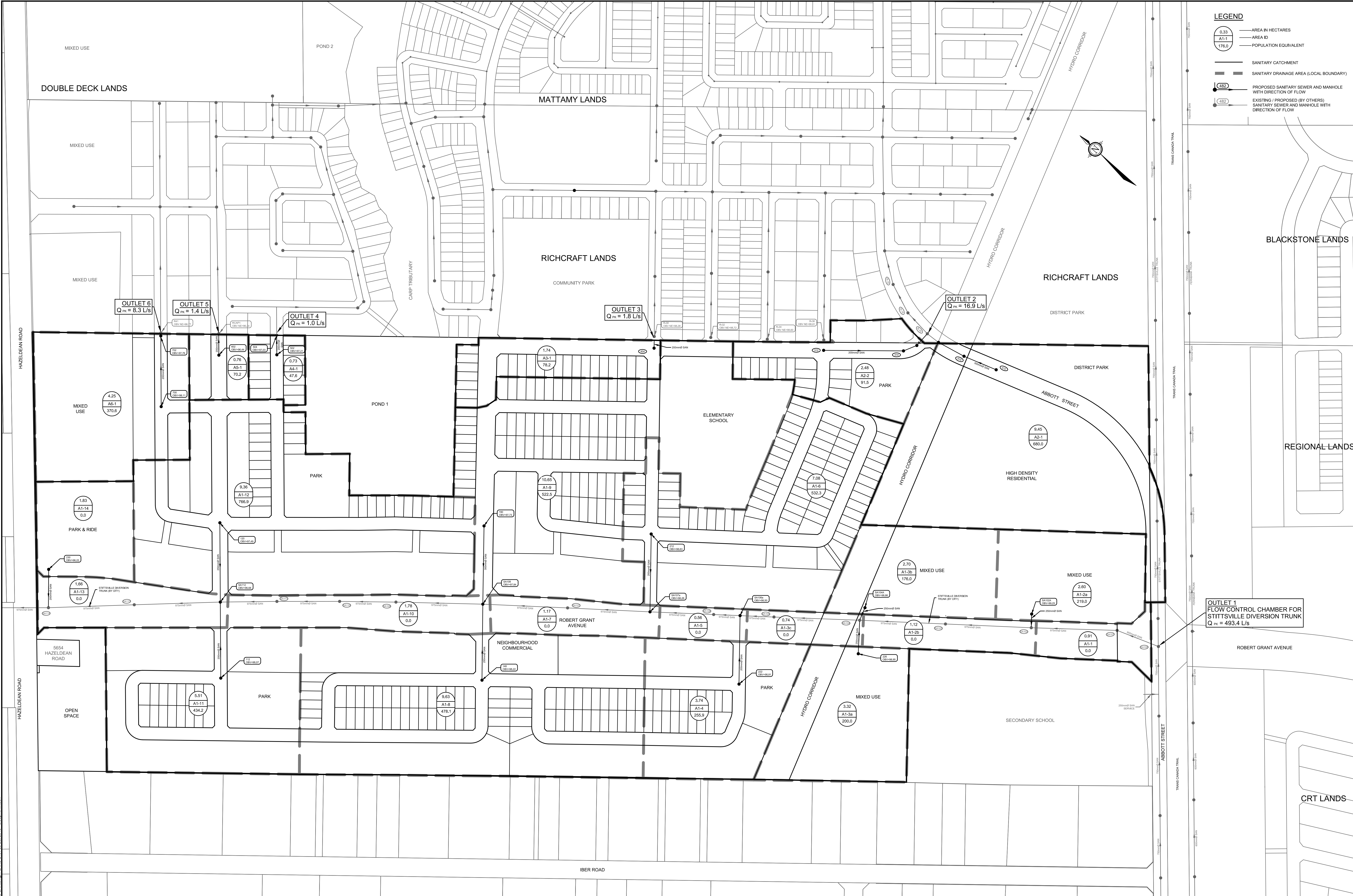


LEGEND

- AREA IN HECTARES
- AREA ID
- POPULATION EQUIVALENT
- SANITARY CATCHMENT
- SANITARY DRAINAGE AREA (LOCAL BOUNDARY)
- PROPOSED SANITARY SEWER AND MANHOLE WITH DIRECTION OF FLOW
- EXISTING / PROPOSED (BY OTHERS) SANITARY SEWER AND MANHOLE WITH DIRECTION OF FLOW



NOTE:
 THE POSITION OF ALL POLE LINES, CONDUITS, WATERMANS, SEWERS AND OTHER UNDERGROUND AND OVERGROUND UTILITIES AND STRUCTURES IS NOT NECESSARILY SHOWN ON THE CONTRACT DRAWINGS, AND WHERE SHOWN, THE ACCURACY OF THE POSITION OF SUCH UTILITIES AND STRUCTURES IS NOT GUARANTEED. BEFORE STARTING WORK, DETERMINE THE EXACT LOCATION OF ALL SUCH UTILITIES AND STRUCTURES AND ASSUME ALL LIABILITY FOR DAMAGE TO THEM.

No.	REVISION	DATE	BY
3.	DRAFT PLAN RESUBMISSION	FEB 23/18	MAB
2.	REVISED PER CITY COMMENTS	JUL 20/17	MAB
1.	DRAFT PLAN APPLICATION	NOV. 9/16	MAB

DESIGN	SCALE
LRW	1:2000
MAB	1:2000
DTD	0 20 40 60 80
MAB	
JGR	

FOR REVIEW ONLY

PROFESSIONAL ENGINEER
 L. R. WILSON
 10160065
 PROVINCE OF ONTARIO

PROFESSIONAL ENGINEER
 M.A. BISSETT
 2018, 02.13
 PROVINCE OF ONTARIO

NOVATECH
 Engineers, Planners & Landscape Architects
 Suite 200, 240 Michael Cowpland Drive
 Ottawa, Ontario, Canada K2M 1P6
 Telephone: (613) 254-9643
 Facsimile: (613) 254-5867
 Website: www.novatech-eng.com

CITY OF OTTAWA
 FERNBANK COMMUNITY - KIZELL LANDS

SANITARY DRAINAGE AREA PLAN

PROJECT No. 108195
 REV # 3
 DRAWING No. 108195-SAN

C:\Users\lrb\OneDrive\Documents\CAD\108195-SAN\108195-SAN.dwg, P:\ANS-B1 - Feb 23, 2018 - 3:58pm, Wilson