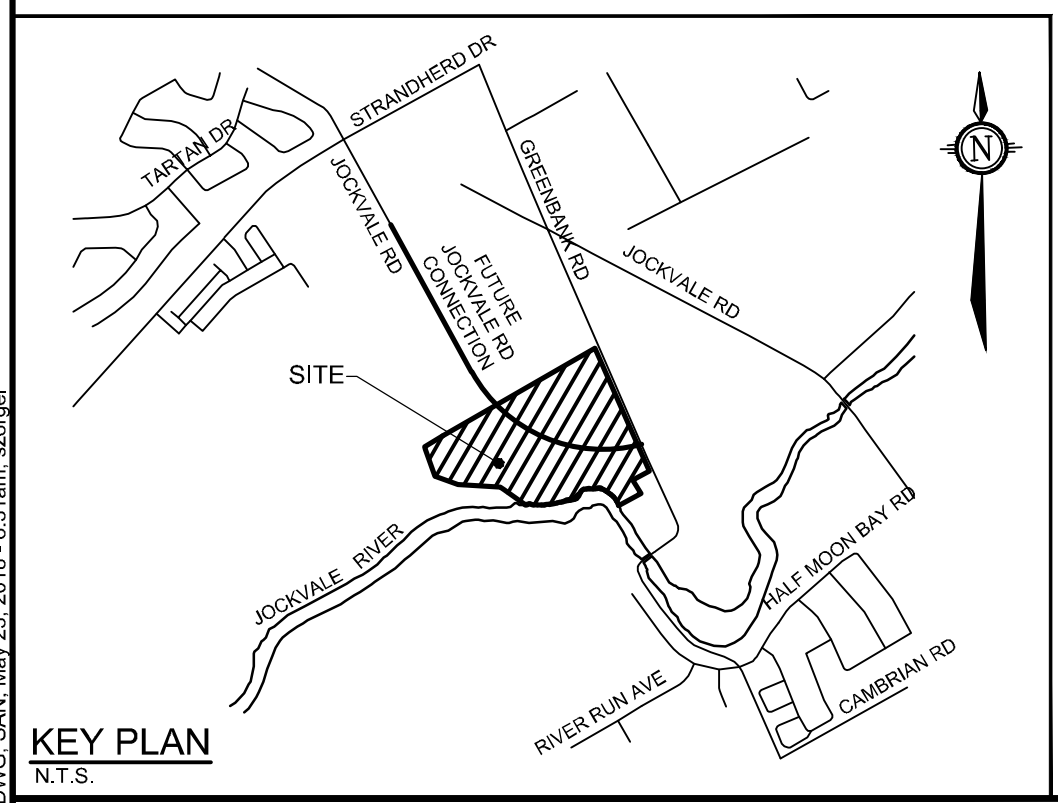


LEGEND

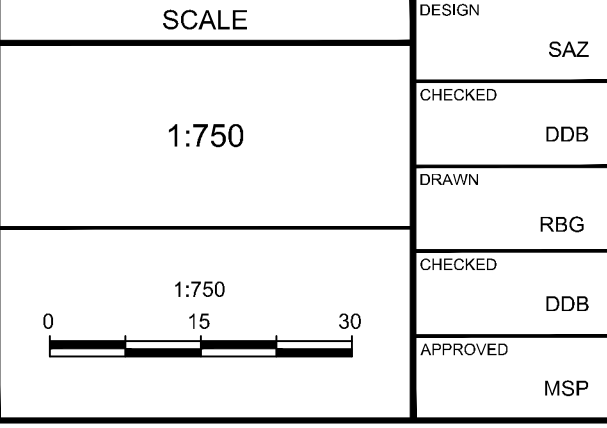
- DRAINAGE AREA (HECTARES)
- DRAINAGE AREA NUMBER
- POPULATION EQUIVALENT
- NUMBER OF UNITS
- SANITARY DRAINAGE AREA BOUNDARY
- PROPOSED SANITARY MANHOLE & SERVICES
- PROPOSED SANITARY MANHOLE & TRUNK SEWER
- EXISTING SANITARY MANHOLE & SERVICE
- FUTURE DEVELOPMENT BY OTHERS



NOTE:
 THE POSITION OF ALL POLE LINES, CONDUITS, WATERMANS, SEWERS AND OTHER UNDERGROUND AND OVERGROUND UTILITIES AND STRUCTURES IS NOT NECESSARILY SHOWN ON THE CONTRACT DRAWINGS, AND WHERE SHOWN, THE ACCURACY OF THE POSITION OF SUCH UTILITIES AND STRUCTURES IS NOT GUARANTEED. BEFORE STARTING WORK, DETERMINE THE EXACT LOCATION OF ALL SUCH UTILITIES AND STRUCTURES AND ASSUME ALL LIABILITY FOR DAMAGE TO THEM.

NOTE:
 CONTRACTOR TO CONFIRM ELEVATIONS OF INFRASTRUCTURE IN THE STREET PRIOR TO EXTENDING SERVICES INTO THE SITE AND SHALL NOTIFY ENGINEER OF ANY DISCREPANCIES IMMEDIATELY.

| No. | REVISION | DATE | BY |
|-----|---|-----------|-----|
| 3 | REISSUED WITH DRAFT PLAN OF SUBDIVISION | MAY 23/18 | MSP |
| 2 | REISSUED WITH DRAFT PLAN OF SUBDIVISION | JAN 26/18 | MSP |
| 1 | ISSUED WITH DRAFT PLAN OF SUBDIVISION | DEC 6/16 | GJM |



| DESIGN | FOR REVIEW ONLY |
|--------------|-----------------|
| CHECKED SAZ | |
| DESIGN DDB | |
| DRAWN RBG | |
| CHECKED DDB | |
| APPROVED MSP | |

NOVATECH
 Engineers, Planners & Landscape Architects
 Suite 200, 240 Michael Cowpland Drive
 Ottawa, Ontario, Canada K2M 1P6
 Telephone: (613) 254-9643
 Facsimile: (613) 254-5867
 Website: www.novatech-eng.com

| | |
|---|----------------------------|
| LOCATION CITY OF OTTAWA 3370 GREENBANK ROAD | PROJECT NO. 111117 |
| DRAWING NAME SANITARY DRAINAGE AREA PLAN | REV # 3 |
| | DRAWING NO. 111117-SAN1 |

M:\031117\17\CAD\Design\1117 - SAN.DWG SAN, May 23, 2018 - 8:31am, szepel