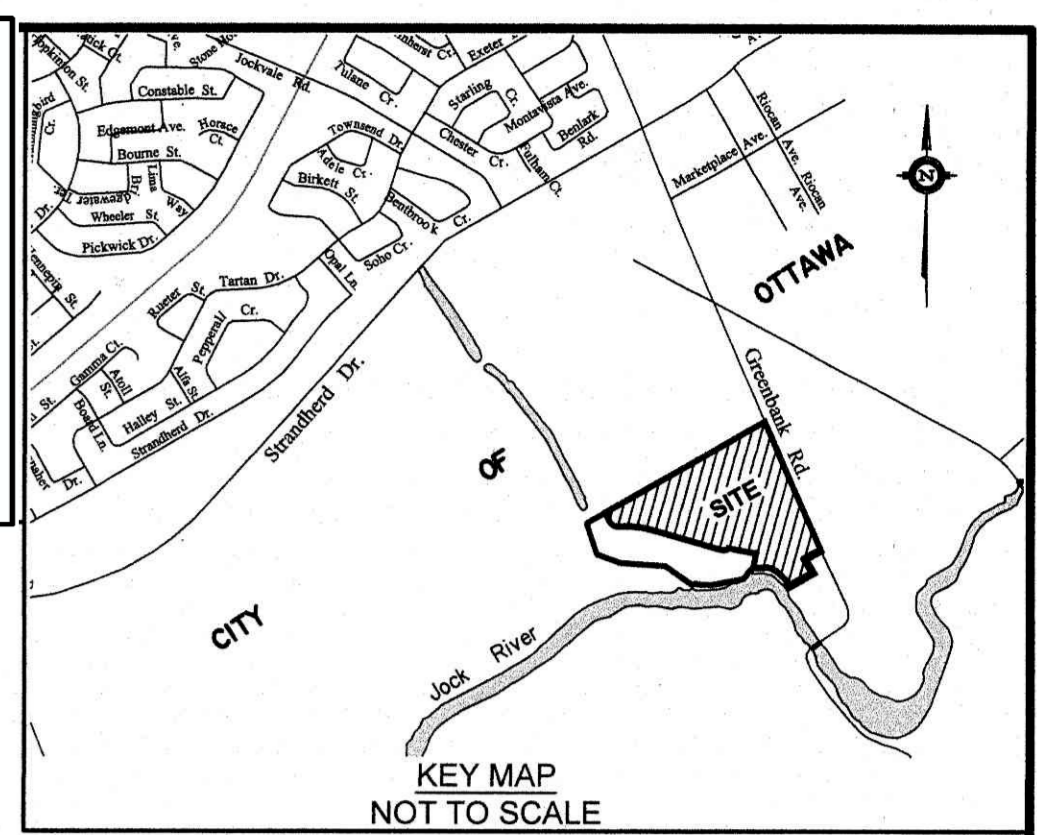


SUBJECT TO THE CONDITIONS, IF ANY, SET FORTH IN OUR LETTER DATED May 22, 2020, THIS DRAFT PLAN IS APPROVED BY THE CITY OF OTTAWA UNDER SECTION 51 OF THE PLANNING ACT THIS 12 DAY OF JUNE, 2020.

[Signature]

LILY XU, M.C.P., R.P.P. MANAGER
DEVELOPMENT REVIEW SOUTH
PLANNING, INFRASTRUCTURE AND ECONOMIC
DEVELOPMENT DEPARTMENT, CITY OF OTTAWA



**DRAFT PLAN OF SUBDIVISION OF
PART OF LOT 13
CONCESSION 3 (RIDEAU FRONT)**
Geographic Township of Nepean
CITY OF OTTAWA
Prepared by Annis, O'Sullivan, Vollebek Ltd.

Scale 1:1000
0 10 20 30 40 Metres

Metric
DISTANCES SHOWN ON THIS PLAN ARE IN METRES AND CAN BE CONVERTED TO FEET BY DIVIDING BY 0.3048

SURVEYOR'S CERTIFICATE

I CERTIFY THAT:
The boundaries of the lands to be subdivided and their relationship to adjoining lands have been accurately and correctly shown.

March 10/20
Date
[Signature]
T. Hartwick
ONTARIO LAND SURVEYOR

OWNER'S CERTIFICATE

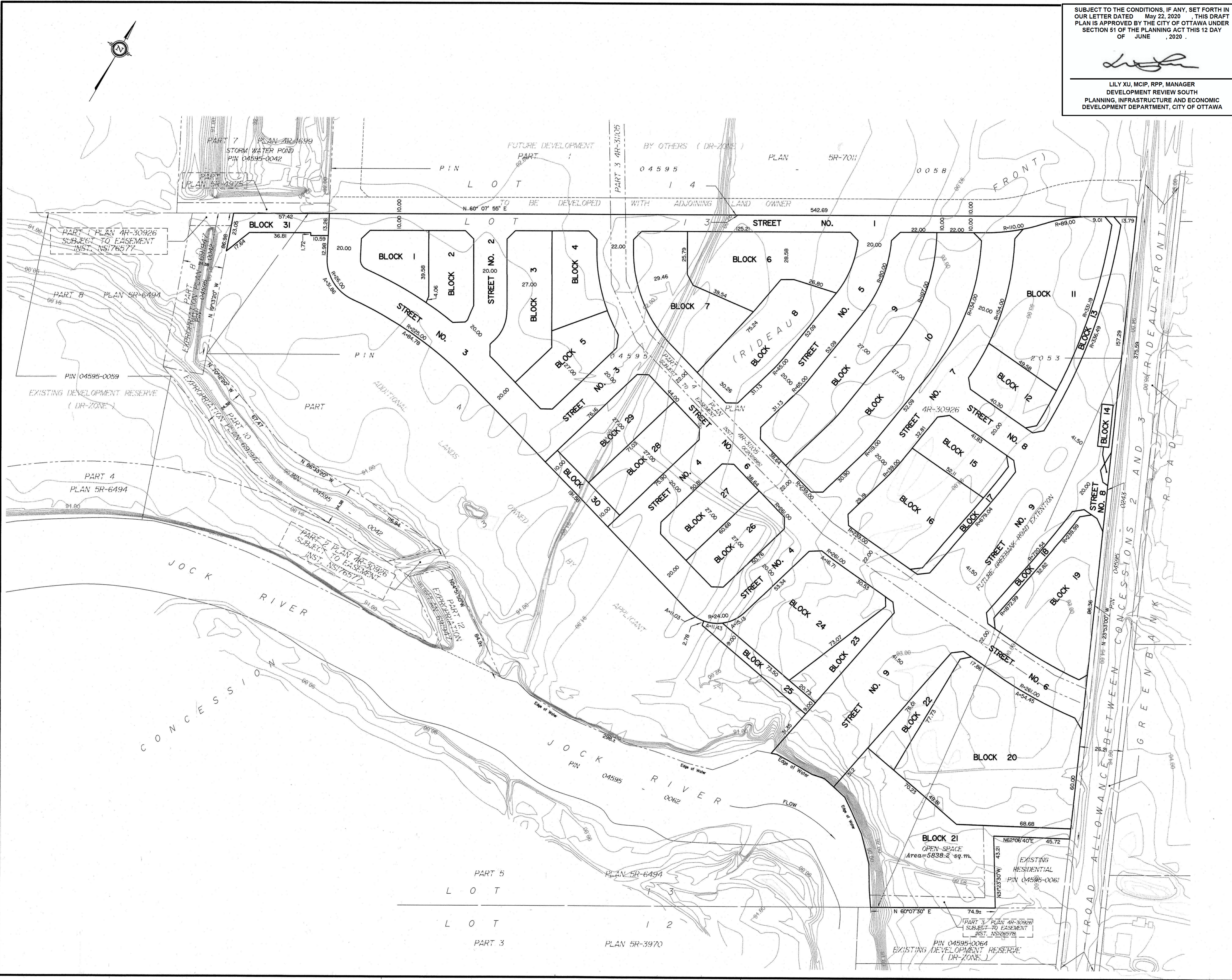
This is to certify that we are the owners of the lands to be subdivided and that this plan was prepared in accordance with our instructions.

March 10/20
Date
[Signature]
Jim Burghout
CLARIDGE HOMES (SOUTH NEPEAN) INC.
I have the authority to bind the corporation.

ADDITIONAL INFORMATION REQUIRED UNDER SECTION 51-17 OF THE PLANNING ACT

- (a) see plan
- (b) see plan
- (c) see plan
- (d) multi-family residential housing, park land, open space
- (e) see plan
- (f) see plan
- (g) see plan
- (h) City of Ottawa
- (i) see soils report
- (j) see plan
- (k) sanitary, storm sewers, municipal water, bell, hydro, cable and gas to be available
- (l) see plan

REVISION SCHEDULE			
NO.	REVISION	DATE	BY
F2 D8	ADDED GREENBANK AS STREET	OCT. 28, 2019	N
F2 D7	ADDED BLOCKS 27 AND 28	JUNE 20, 2019	N
F2 D6	REMOVED BLKS 26 AND 27	APR. 29, 2019	N
F2 D5	REVISIONS	MAR. 20, 2019	DG
F2 D4	REVISIONS	JAN. 16, 2019	N
F2 D3	REVISIONS	NOV. 13, 2017	DG
F2 D2	REVISIONS	SEPT. 8, 2017	N
F2 D1	REVISION	SEPT. 5, 2017	N
1	PLAN PREPARED	2017	??



\\C:\ADVERT\16396-15\Drawings\16396-15 Claridge P.L.L.C. CS RF NP DPS F2 D8.dwg