

Copyright Reserved

The Contractor shall verify and be responsible for all dimensions. DO NOT scale the drawing - any errors or omissions shall be reported to Stantec without delay.
The Copyrights to all designs and drawings are the property of Stantec. Reproduction or use for any purpose other than that authorized by Stantec is forbidden.

Legend

- PROPOSED TRUNK SANITARY SEWER
- EXISTING TRUNK SANITARY SEWER
- SANITARY DRAINAGE BOUNDARY
- EXISTING SANITARY DRAINAGE BOUNDARY
- AREA ID
- POPULATION
- SANITARY DRAINAGE AREA (ha)
- FUTURE AREA ID
- FUTURE POPULATION
- FUTURE SANITARY DRAINAGE AREA (ha)
- EXISTING AREA ID
- EXISTING POPULATION
- EXISTING SANITARY DRAINAGE AREA (ha)

Notes

2	REVISED PER CITY COMMENTS	DT	DT	18.04.25
1	ISSUED FOR DRAFT PLAN APPROVAL	DT	DT	17.06.16

Revision By Appd. Y YMMDD

File Name:	160410140-DB	DT	AMP	DT	17.05.17
		Dim.	Chkd.	Dign.	Y YMMDD

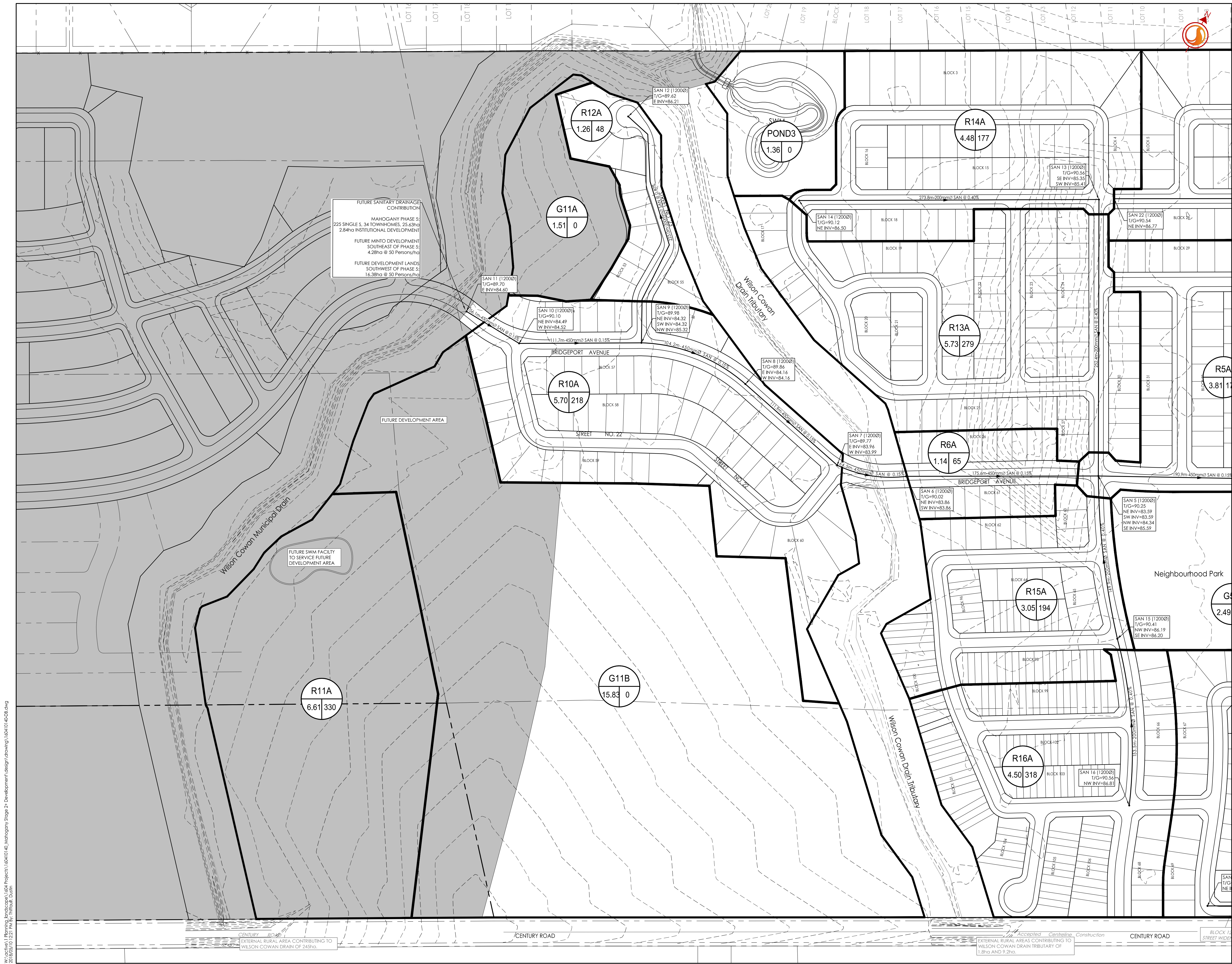
Permit-Seal

Client/Project
MINTO GROUP INC.

MAHOGANY SUBDIVISION
PHASES 2-4
OTTAWA, ON

Title
CONCEPTUAL
SANITARY DRAINAGE
PLAN

Project No. 160410140
Scale 1:1500
Drawing No. SA-2
Sheet 6 of 9
Revision 2



FUTURE SANITARY DRAINAGE CONTRIBUTION
MAHOGANY PHASE 5:
225 SINGLE S. 34 TOWNHOMES, 25.63ha
2.84ha INSTITUTIONAL DEVELOPMENT
FUTURE MINTO DEVELOPMENT
SOUTHEAST OF PHASE 5:
4.28ha @ 50 Persons/ha
FUTURE DEVELOPMENT LANDS
SOUTHWEST OF PHASE 5:
16.38ha @ 50 Persons/ha

FUTURE SWM FACILITY
TO SERVICE FUTURE
DEVELOPMENT AREA

EXTERNAL RURAL AREA CONTRIBUTING TO
WILSON COWAN DRAIN OF 245ha.

Accepted Centreline Construction
EXTERNAL RURAL AREAS CONTRIBUTING TO
WILSON COWAN DRAIN TRIBUTARY OF
1.8ha AND 9.2ha.

W:\active\1_Planning_Embodiment\1604 Project\160410140_Mahogany Stage 2- Development\design\drawing\160410140-DB.dwg
25/05/2017 12:21 PM By: J. D. D. D.