

Archaeological  
Services

Geotechnical  
Engineering

Environmental  
Engineering

Hydrogeology

Geological  
Engineering

Materials Testing

Building Science

# patersongroup

**ORIGINAL REPORT**

## **Stage 2 Archaeological Assessment:**

Proposed Residential Development,  
Old Montreal Road,  
Part Lots 27 and 28, Concession 1  
Cumberland Township,  
Carleton County  
City of Ottawa, Ontario

### **Prepared For**

Paul Black  
Fotenn  
223 McLeod St  
Ottawa, ON  
K2P 0Z8  
(613) 730-5709  
black@fotenn.com

**August 2018**

**Submitted for Review August 31, 2018**

### **Paterson Group Inc.**

Consulting Engineers  
154 Colonnade Road South  
Ottawa (Nepean), Ontario  
Canada K2E 7J5

Tel: (613) 226-7381  
Fax: (613) 226-6344  
[www.patersongroup.ca](http://www.patersongroup.ca)

PIF: P369-0074-2018  
Ben Mortimer (P369)  
Report: PA1105-1

## **1.0 Executive Summary**

Paterson Group, on behalf of Phoenix Homes c/o Fotenn, undertook a Stage 2 archaeological assessment of a proposed residential subdivision on Old Montreal Road, on Part Lots 27 and 28, Concession 1, in the former township of Cumberland, Carleton County (Map 1). This assessment is in accordance with the Ministry of Tourism, Culture and Sport's *Standards and Guidelines for Consultant Archaeologists* (2011). The objectives of the investigation were to assess the archaeological potential of the property and determine whether further archaeological study was required. This archaeological assessment was required by the City of Ottawa on the study area prior to development activities in accordance with the Planning Act. Fotenn is overseeing the planning for Phoenix Homes who is planning to develop the property for residential use (Map 2).

The previous Stage 1 assessment determined that the entirety of the property had archaeological potential therefore Stage 2 archaeological assessment was recommended (Paterson Group 2013b).

The Stage 2 component of the archaeological assessment involved a shovel test pit survey of the area, as ploughing was not possible. Subsurface testing consisted of hand excavated test pits at 5 m intervals. The field portion was undertaken from August 2-3, 2018. Weather conditions were clear and sunny with average temperatures of 26° Celsius. Permission to access the property was provided by Fotenn. There were no archaeological resources with cultural heritage value or interest identified during the Stage 2 Archaeological Assessment.

Based on the results of this investigation it is recommended that:

1. No further archaeological study is required for the study property as delineated in Map 1.

**2.0 Table of Contents**

1.0 Executive Summary ..... i

2.0 Table of Contents ..... ii

3.0 Project Personnel ..... 1

4.0 Project Context..... 2

    4.1 Development Context..... 2

    4.2 Historical Context ..... 2

        4.2.1 Historic Documentation ..... 2

        4.2.2 Pre-Contact Period..... 2

        4.2.3 Contact Period ..... 3

        4.2.4 Post-Contact Period ..... 4

        4.2.5 Study Area Specific History ..... 4

    4.3 Archaeological Context ..... 6

        4.3.1 Current Conditions ..... 6

        4.3.2 Physiography ..... 6

        4.3.3 Previous Archaeological Assessments ..... 7

        4.3.4 Registered Archaeological Sites and Commemorative Plaques ..... 7

    4.4 Archaeological Potential ..... 7

5.0 Field Methods..... 8

6.0 Record of Finds ..... 9

7.0 Analysis and Conclusions ..... 10

8.0 Recommendations ..... 11

9.0 Advice on Compliance with Legislation..... 12

10.0 Closure ..... 13

11.0 Bibliography and Sources ..... 14

12.0 Images..... 18

13.0 Maps..... 25

Appendix A: Photographic Catalogue ..... 31

Appendix B: Map Catalogue ..... 33

Appendix C: Document Catalogue..... 33

### 3.0 Project Personnel

Licensee	Ben Mortimer, MA (P369)
Field Director	Ben Mortimer, MA (P369) Nadine Kopp, MA (P378)
Field Crew	Stephanie Halmhofer, MA Katelyn Corrigan-Millins Caleigh Hartley Carina Hochgeschurz
Report Preparation	Nadine Kopp, MA (P378)
GIS and Mapping	Ben Mortimer, MA (P369)
Report Review	Ben Mortimer, MA (P369)

## 4.0 Project Context

### 4.1 Development Context

Paterson Group, on behalf of Phoenix Homes c/o Fotenn, undertook a Stage 2 archaeological assessment of a proposed residential subdivision on Old Montreal Road, on Part Lots 27 and 28, Concession 1, in the former township of Cumberland, Carleton County (Map 1). This assessment is in accordance with the Ministry of Tourism, Culture and Sport's *Standards and Guidelines for Consultant Archaeologists* (2011). The objectives of the investigation were to assess the archaeological potential of the property and determine whether further archaeological study was required. This archaeological assessment was required by the City of Ottawa on the study area prior to development activities in accordance with the Planning Act. Fotenn is overseeing Phoenix Homes' plans to develop the property for residential use (Map 2).

The City of Ottawa has an archaeological management plan which was developed in 1999, *The Archaeological Resource Potential Mapping Study of the Regional Municipality of Ottawa-Carleton*. The management plan covers the Township of Cumberland (Archaeological Services Inc. and Geomatics International Inc. 1999). According to the management plan, the entirety of the study area has archaeological potential, triggering the assessment process.

At the time of the archaeological assessment, the study area was owned by Phoenix Homes. Permission to access the study property was granted by Phoenix Homes c/o Fotenn prior to the commencement of any field work; no limits were placed on this access.

### 4.2 Historical Context

#### 4.2.1 Historic Documentation

There are a few published resources on the history of Cumberland Township. The township is briefly referred to in *Ottawa Country* (Bond 1968), but most notably in *Historical Research for Cumberland Township* (Heinz 1936), and *Memories of Cumberland Township* (Cumberland Township Historical Society 2006). Another useful resource is the *Prescott and Russell Supplement to the Illustrated Atlas of the Dominion of Canada* (1881).

#### 4.2.2 Pre-Contact Period

The Ottawa Valley was not hospitable to human occupation until the retreat of glaciers and the draining of the Champlain Sea, some 10,000 years ago. The Laurentide Ice Sheet of the Wisconsinian glacier blanketed the Ottawa area until about 11,000 B.P. At this time the receding glacial terminus was north of the Ottawa Valley, and water from the Atlantic Ocean flooded the region to create the Champlain Sea. The Champlain Sea encompassed the lowlands of Quebec on the north shore of the Ottawa River and most of Ontario east of Petawawa, including the Ottawa Valley and Rideau Lakes. However, by 10,000 B.P. the Champlain Sea was receding and within 1,000 years was gone from Eastern Ontario (Watson 1990:9).

By circa 11,000 B.P., when the Ottawa area was emerging from glaciations and being flooded by the Champlain Sea, northeastern North America was home to what are commonly referred to as the Paleo-Indian people. For Ontario the Paleo-Indian period is divided into the Early Paleo-Indian period (11,000 – 10,400 B.P.) and the Late Paleo-Indian period (10,500 – 9,400 B.P.), based on changes in tool technology (Ellis and Deller 1990). The Paleo people, who had moved into hospitable areas of southwest Ontario (Ellis and Deller 1990), likely consisted of small groups of exogamous hunter-gatherers relying on a variety of plants and animals who ranged over large territories (Jamieson 1999). The few possible Paleo-Indian period artifacts found, as surface finds or poorly documented finds, in the broader region are from the Rideau Lakes area (Watson 1990) and Thompson's Island near Cornwall (Ritchie 1969:18). In comparison, little evidence exists for Paleo-Indian occupations in the immediate Ottawa Valley, as can be expected given the environmental changes the region underwent, and the recent exposure of the area from glaciations and sea. However, as Watson (1999:38) suggests, it is possible Paleo-Indian people followed the changing shoreline of the Champlain Sea, moving into the Ottawa Valley in the late Paleo-Indian Period, although archaeological evidence is absent.

As the climate continued to warm, the ice sheet receded further allowing areas of the Ottawa Valley to be travelled and occupied in what is known as the Archaic Period (9,500 – 2,900 B.P.). This period is generally characterized by increasing populations, developments in lithic technology (e.g., ground stone tools), and emerging trade networks. Archaic populations remained hunter-gatherers with an increasing emphasis on fishing. Sites from this period in the region include Morrison's Island-2 (BkGg-10), Morrison's Island-6 (BkGg-12) and Allumette Island-1 (BkGg-11) near Pembroke, and the Lamoureux site (BiFs-2) in the floodplain of the South Nation River (Clermont 1999).

The Woodland Period is characterized by the introduction of ceramics. Populations continued to participate in extensive trade networks that extended across much of North America. Social structure appears to have become increasingly complex with some status differentiation recognized in burials. Towards the end of this period domesticated plants were gradually introduced to the region. This coincided with other changes including the development of semi-permanent villages. The Woodland period is commonly divided into the Early Woodland (1000 – 300 B.C.), Middle Woodland (400 B.C. to A.D. 1000), and the Late Woodland (A.D. 900 – European Contact) periods.

The Early Woodland is typically noted via lithic point styles (i.e., Meadowood bifaces) and pottery types (i.e., Vinette I). Early Woodland sites in the Ottawa Valley region include Deep River (CaGi-1) (Mitchell 1963), Constance Bay I (BiGa-2) (Watson 1972), and Wyght (BfGa-11) (Watson 1980). The Middle Woodland period is identified primarily via changes in pottery style (e.g., the addition of decoration). Some of the best documented Middle Woodland Period sites from the region are from Leamy Lake Park (BiFw-6, BiFw-16) (Laliberté 1999).

The identification of pottery traditions or complexes (Laurel, Point Peninsula, Saugeen) within the Northeast Middle Woodland, the identifiers for the temporal and social organizational changes signifying the Late Woodland Period, subsequent phases within in the Late Woodland, and the overall 'simple' culture history model assumed for Ontario at this time (e.g., Ritchie 1969; Wright 1966, 2004) are much debated in light of newer evidence and improved interpretive models (Engelbrecht 1999; Ferris 1999; Hart 2012; Hart and Brumbach 2003, 2005, 2009; Hart and Englebrecht 2012; Martin 2008; Mortimer 2012). Thus the shift into the period held as the Late Woodland is extremely fuzzy. Needless to say there are general trends for increasingly sedentary populations, the gradual introduction of agriculture, and changing pottery and lithic styles. However, nearing the time of contact, Ontario was populated with somewhat distinct regional populations that broadly shared many traits. In the southwest, in good cropland areas, groups were practicing corn-bean-squash agriculture in semi-permanent, often palisaded villages which are commonly assigned to Iroquoian peoples (Wright 2004:1297-1304). On the shield and in other non-arable environments, including portions of the Ottawa Valley, there seems to remain a less sedentary lifestyle often associated with the Algonquian groups noted in the region at contact (Wright 2004:1485-1486).

#### 4.2.3 Contact Period

Initial contact between the Ottawa Valley Algonquian groups and European explorers occurred during Champlain's travels in 1613. At this time the Algonquian people along the Ottawa River Valley, an important and long-standing trade route to the interior, were middle-men in the rapidly expanding fur-trade industry and alliances were formed or reinforced with the French. Early historical accounts note many different Algonquian speaking groups in the region at the time. Of note for the lower Ottawa Valley area were the Kichesipirini (focused around Morrison Island); Matouweskariini (upstream from Ottawa, along the Madawaska River); Weskarini (around the Petite Nation, Lièvre, and Rouge rivers west of Montreal), Kinouchepirini (in the Bonnechere River drainage); and the Onontchataronon, (along the South Nation River) (Joan Holmes & Associates 1993; Morrison 2005; Pilon 2005). However, little archaeological work has been undertaken of contact period Algonquians (Pilon 2005).

Starting in the 1630s and continuing into the 1700s, European disease spread among the Algonquian groups along the Ottawa River, bringing widespread death (Trigger 1986:230). Additionally, up to 1650 warfare and raiding into the lower Ottawa Valley by the Five Nation Iroquois forced the various Algonquin groups from the area (Morrison 2005:26). By 1701 the Iroquois had been driven from most of southern Ontario and the Ottawa Valley was occupied by the Algonquin Nation (Morrison 2005:27-28).

A traditional lifeway was continued by many of the Algonquian groups in the lower Ottawa Valley above Montreal through to the influx of European settlement in the late 1700s and early 1800s. This included bands noted to be living along the Gatineau River and other rivers flowing into the Ottawa. These traditional bands maintained a seasonal round focused on harvesting activities into the 1800s when development pressures and assimilation policies implemented by the colonial government saw Algonquian lands taken up, albeit under increasing protest and without consideration for native claims, for settlement and industry.

#### 4.2.4 Post-Contact Period

The first survey of 47,000 acres that would become Cumberland Township took place in 1791. A second survey in 1798 stated that counties should be made up of townships within eight judicial districts: Eastern, Johnston, Midland, Home, Niagara, London, Western and Newcastle. This was executed in 1802, when the area became part of the Eastern District which consisted of the counties of Glengarry, Dundas, Leeds, and Stormont (Cumberland Township Historical Society 2005).

In the summer of 1799, Cumberland Township was named to honour Prince Ernest Augustus I, one of the numerous children of George III, who became Duke of Cumberland on 24 April 1799. By October 1799, Cumberland Township was listed as existing partly in Stormont and Dundas Counties. On 1 January 1800, Cumberland Township was included with the townships of Clarence, Gloucester, Osgoode, Russell, and Cambridge in the County of Russell, which was now included in the Eastern District (Cumberland Township Historical Society 2005).

In Russell County the first settlements occurred along the Ottawa River. The village of Cumberland was established on the south shore of the Ottawa River in 1801. Its strategic location at the confluence of the Lievre and Ottawa Rivers made it a popular early fur trading post. Settlement is not recorded in the interior of the township prior to 1820. By 1828, there were only twelve landowners in the township (Assessment Rolls for Cumberland Township).

By the mid-1800s the settlement of Cumberland was a major seasonal forwarding centre. The wharf allowed for mail carriers to transport communications, and the village had two telegraph offices. Cumberland also had a small ship building industry (Cumberland Township Historical Society 2005). In 1851, the population of Cumberland township was 1,659 and by 1861 had almost doubled to 2,609 (Bond 1968:22). In 1851, the township consisted of one stone house, 54 frame houses, 46 log houses, and 115 shanties. By 1861, the township had 6 stone houses, 16 frame houses, 315 log houses, and zero shanties (Bond 1968:24).

#### 4.2.5 Study Area Specific History

##### **Lot 27 west half**

The Crown granted lot 27 as two halves, the east and the west half. It is on the west half that the study area lies. The west half was granted to Joseph Laflame on November 3, 1845 (OLR:AR-24). Laflame sold the west half of lot 27 in September of 1854 to James Ogilvie. In July of 1857, Ogilvie sold the property to John Carr. John Carr was a farmer from Ireland that was a Plymouth Brethren by religion. His wife Mary, was born in Ontario of Irish decent. Together they had six children: Jane, George, Elizabeth, James, Emiline, and Mary (Statistics Canada 1881). By the 1891 census, Jane is no longer listed indicating that she was likely married and now living with her husband. Mary's name shows up as Minnie (Statistics Canada 1891). John Carr passed away in August of 1891 and willed the northwest half of the property to his son George, and his wife Mary retained the southern portion. When Mary passed away in 1903, Emiline and Minnie released their claim to the property and the entirety of the property was then owned by George F. Carr. George owned the property until he sold it in 1917 (OLR:AR-24).

##### **Lot 28**

The study area is located on Part Lot 28, the first Concession from the Ottawa River in the geographic township of Cumberland. While the 1825 Coffin map of Cumberland Township (Map 3) shows that the land was granted at that time, it was not until May 25, 1836 that the original 200 acre parcel that comprises Lot 28 was granted

by the Crown to Matilda Cozens (OLR:AR-24). Matilda's sister Diana was granted the neighbouring Lot 29. Their father Joshua Young Cozens was a loyalist that moved to Cornwall after the American Revolution and became a conveyancer, a specialty lawyer in the buying and selling of property.

Joshua Young Cozens was married twice, first in 1788 to Sarah Zane, who passed away sometime before 1801, when he remarried Susannah Page. Through both marriages he had twelve children: Helen W., Christy Ann, Alexander F., William Zane, Benjamin Small, Diana, Isaac Brock, Julia Ann, Margaret, Matilda, and Nelson. As a result of the Order in Council each of his children received 200 acres of land, generally for males at the age of 21, and for females on their 21<sup>st</sup> birthday or upon their marriage. However, eight of the siblings received their Order in Council on September 4, 1834, such was the case with Matilda. All of her brothers except for William Zane were granted land in the Town of Cornwall (Reid 1973:75).

Matilda passed away in 1839, and her brother Benjamin inherited the property, he first appears on the assessment rolls in 1841 (OLR:AR-24; Serré 2001a:6). By 1840, a structure is shown on Lot 28 to the north of the Old Montreal Road (outside of the current study area), which could represent the cabin site identified as the Cardinal Creek Site (BiFu-7), although this site may represent an earlier structure (Assessment Rolls for Cumberland Township 1834-1848) (Map 3). It is possible that Benjamin moved from the town of Cornwall to the house on Lot 28 since in 1844, he was elected the Superintendent of the elementary schools in the Townships of Cumberland and Cambridge (while the town of Cornwall is located in Cornwall Township) (Serré 2001a:6). Benjamin died in 1847 and was buried at St. Columban Catholic Church in Cornwall, as it is likely there was a family plot since his father was still living (Joshua Young passed away in 1852 at the age of 86), and it was not until 1855 that a Catholic chapel with a cemetery was constructed in Cumberland Township (Ancestry.com 2007; Serré 2001b:18; Statistics Canada 1851). At this time the property on which the site is located passed to his father Joshua Young Cozens.

In 1848, Joshua sold the property to Edward Dagton and William McShaw for £287. In 1850, Dagton and McShaw sold the property to Robert J. Lusk for £200. While Lusk owned the study area property, the 1861 census, indicates he lived in the village of Buckingham (now amalgamated with Gatineau) with his wife Matilda (née Higginson) in a one and a half storey plank laid house. He was an agent born in Ireland in approximately 1820. His wife Matilda was born in Canada West (Ontario) in approximately 1818. The 1871 census indicates that Lusk was a farmer, still living in Quebec (Ancestry.com 1861; Statistics Canada 1871).

On January 25, 1862, Lusk deeded the property to William Lough who mortgaged it from Lusk for \$1000. William Lough was a miller and farmer. He was born in 1811 in Ireland. In 1835 he married Jane Lusk, however, it is unclear how, or if, Jane was related to Robert J. Lusk. Together they had nine children: Robert, William, John, Maggie, Mary, Thomas, Daniel, Martha, and Elizabeth (Ancestry.com 1861). It is possible that before the property was deeded to Lough that he was already the occupant of the property, since Lusk was living in Buckingham. The 1851 agricultural census of Canada West indicates that Lough was already living on the property. It also indicates that there was a total of 400 acres, 10 acres sown with oats that produced 300 bushels, 40 under pasture, and 350 acres were a wood lot or wild. This amounted to a total value of \$5000. There was a total cash value of \$90 for all of the farming implements (Statistics Canada 1851).

The 1862 map of the township indicates Lough as the owner of the property and shows a road that crosses through the property (Map 3). It crosses the creek once and meets it further to the north (outside the current study area). The 1871 Census of Canada (Statistics Canada 1871) lists William Lough (Junior) as a merchant and the owner of lots 28 and 29. William (Senior) and Jane Lough are still on the property with the five younger children; however it appears all assets are listed as their son's. At this time William Lough Junior is listed as having 400 occupied acres, 45 improved acres, 23 acres in pasture, and 3 acres of orchard. This includes 5 houses or dwellings, 4 barns or stables and 8 carriages, wagons, sleighs or sleds, 2 pleasure boats a thrashing machine and a fanning mill. The farm produced 80 bushels of oats, 24 bushels of peas, 130 bushels of potatoes, 5 bushels of apples and had 14 acres of hay. Livestock included 18 swine, 14 sheep, 5 cows, 4 horses and had killed 21 swine, 10 sheep, 2 cows. In their stock they had 600 lbs of butter, 120 lbs of homemade cheese and 60 lbs of wool.

Noting Lough Juniors success as a merchant, the 1871 census list him as the owner of 64 shares in steam vessels, and 5 barges. Perhaps the merchant and shipping side is what necessitates the road through the property in the 1860s.



Throughout the 1870s several other mortgages were placed on the property, and in 1882 Robert J. Lusk declared insolvency. Lusk mortgaged the property several times before declaring bankruptcy in 1882, indicating that Lough had not completed purchasing the property/paying his mortgage by that point. The Court ruled that the land would pass to Honoré Cotté, one of the money lenders. Honoré Cotté was a cashier at the Banque Jacques-Cartier from 1861 to 1877. In 1870, Cotté had begun to falsify the reports for questionable transactions required by the federal minister of finance, exaggerating the bank's assets. A trial in 1873 found him guilty (Laval 2000).

Cotté sold the property in 1885 to Francis Mason, who in turn sold it the same year to Isidore Cardinal (OLR AR-24). Isidore was a French-Canadian farmer born in St. Louis de Gonzague, near Valleyfield, Quebec in 1857. With his wife Catharine, they had six children: Joseph, Frébonne, Pulcherie, Alderic, Herménégilde, Hormidas, and Rosanna. The three grown sons Joseph, Alderic, and Herménégilde helped operate the nearby mills and farm the remaining acres. A fourteen-room farmhouse stood on the east side of the creek north of Old Montreal Road (outside the current study area), at some distance from Queen Street. The house burned down and was rebuilt in 1920, but the original barns stood until the 21<sup>st</sup> century.

In 1902, Herménégilde took over operation of the dam and mills on Cardinal Creek and built a house on the west side of the creek overlooking the dam. Alderic inherited the property in 1907 after his father's death and continued to farm the land. In 1908, Alderic sold five and a half acres to the Canadian Northern Ontario Railway Company. Alderic maintained possession of the remainder of the property until his death in 1939 (OLR:AR-24).

No buildings are ever pictured on historic maps within the study area on the south side of Old Montreal Road.

### **4.3 Archaeological Context**

#### **4.3.1 Current Conditions**

The study area consists of a 7 ha. parcel of part of the west half Lot 27 and a portion of the east of Lot 28, Concession 1 in the former Geographic Township of Cumberland, Carleton County. Located to the south of Old Montreal Road at approximately the intersection of Famille-Laporte Avenue (Map 1).

The majority of the study area is currently vacant, overgrown scrubland, on the western edge is a woodlot (Figure 1, Figure 2, and Figure 3). The property has a steep slope on both the northern and southern edges, sloping downwards to Old Montreal Road and a ravine that connects to Cardinal Creek, respectively (Figure 4, Figure 5, Figure 6, Figure 7, and Figure 8). A cell tower sits on the eastern extent of the property.

Three vacant houses exist on the property, with the civic addresses 1154, 1176, and 1180 Old Montreal Road. However, in the middle of the study area is the property civically addressed as 1172 Old Montreal Road, this is not included in the study area.

#### **4.3.2 Physiography**

The entirety of the study area lies in the Ottawa Valley Clay Plain (Map 4). The region is characterized by poorly drained topography of clay plains interrupted by ridges of rock or sand that offer moderately better drainage. This topography was influenced by the post glacial sequence Champlain Sea (*ca.* 10,500 to 8,000 B.C.) that deposited these clay soils and were subsequently covered by sand deposits from the emerging fresh water drainage. Some of these sands were eroded to the underlying clay deposits by later channels of the developing Ottawa River. The sections to the north and south of the Ottawa River are characteristically different. On the Ontario side there is a gradual slope, although there are also some steep scarps (Chapman and Putnam 2007:205-208).

The soils of the study area consist predominately of Ste. Rosalie with a thin band of Rideau along the Old Montreal Road frontage, and an eroded channel on the southern border (Map 4). Ste. Rosalie is a poorly drained orthic humic gleysol, disturbed by agriculture, with fine marine clay, silt, and sand parent materials.

Rideau is an imperfectly drained, gleyed melanic brunisol, typically disturbed by agriculture from marine clay, silt, sand or gravel parent materials.

#### 4.3.3 Previous Archaeological Assessments

Archaeological work in the region has primarily consisted of cultural resource management studies related to specific properties or development projects. Projects located within the vicinity of the study property include a Stage 1 and 2 assessments for a proposed subdivision located on part of Lots A, B & C, Concession. 8 & 9, Cumberland Township (Swayze 2001); a Stage 1 assessment of Part Lots D and E, Concession 7 and Part Lot 21, Concession 7 in Cumberland Township (Adams 2009); and a Stage 1 assessment for a hydro corridor to Quebec that passed through Cumberland Township (Kennett 1999). A Stage 1 Assessment and follow-up Stage 2 Assessments of the Trim Road corridor and realignment were undertaken (Archaeological Services Inc. 1998; Golder Associates 2011a, 2011b). The road allowance along Trim Road underwent a Stage 2 assessment that found no archaeological resources (Golder Associates 2011a). Paterson Group has conducted a Stage 1 and 2 assessment of 955 Dairy Rd (Paterson Group 2013c), and a Stage 1 and 2 assessment of 1375 Trim Road (Paterson Group 2016a, 2016b).

In the immediate study area Paterson Group has conducted a series of archaeological assessments and a mitigation of impact for the Cardinal Creek subdivision to the north of the subject site, including the Stage 4 mitigation of the BiFu-7 historic homestead site (Paterson Group 2012, 2013a, 2013b, 2013d).

Paterson Group completed the Stage assessment of this study area as a component of the larger Cardinal Creek Stage 1 (Paterson Group 2013b). The previous study found the present study area to have archaeological potential and recommended Stage 2 testing using the shovel testing methodology.

#### 4.3.4 Registered Archaeological Sites and Commemorative Plaques

A search of the Ontario Archaeological Sites Database indicated three registered sites are located within a 1 km radius of the study area, these are listed in Table 1.

No commemorative plaques or monuments are located near the subject property.

Borden Number	Site Name	Time Period	Affinity	Site Type	Current Development Review Status
BiFu-6	-	Pre-Contact	Aboriginal	scatter	
BiFu-7	Cardinal Creek site	Post-Contact	Euro-Canadian		
BiFu-8	Ferrin Site	Post-Contact	Euro-Canadian	homestead	No Further CHVI

**Table 1: known archaeological sites within a 1 Km radius.**

### 4.4 Archaeological Potential

The study property exhibits several indicators for pre-contact archaeological potential including proximity to water sources, including Cardinal Creek, elevated topography, and proximity of a known archaeological site. Based on current knowledge of the pre-contact archaeology of the Ottawa Valley, there is potential for pre-contact archaeological sites in this area. Archaeological potential is increased by the proximity of other known archaeological sites, however, only one known lithic scatter is located more than 1 km away from the site.

The land registries, census records, and historic maps show that although this area was mainly rural, the property was occupied from early in the nineteenth century, however there is no evidence of a structure located on the property. Furthermore, the study property was close to historic transportation routes in the form of roads, such as Old Montreal Road. Two other known historic period archaeological sites are located within a 1 km radius of the study property.

## **5.0 Field Methods**

The entire property (7 ha) is considered to have archaeological potential according to the 2011 standards set out for consultant archaeologists by the MTCS. The entirety of the property was not suitable for ploughing as per Standard 1.c. and 1.d., Section 2.1.2 (MTCS 2011). The majority of the area consisted of overgrown fallow fields (Figure 9), a small section on the western portion of the property consisted of a woodlot (Figure 10), and a small part consisted of lawns surrounding vacant houses (Figure 11 and Figure 12) that was shovel tested at 5 meter intervals as per Standard 1.a. Section 2.1.2 (Map 5). Total area surveyed by test pit excavation is 3.2 ha.

All tests-pits were a minimum of 30 cm in diameter and were excavated into the first 5 cm of subsoil. All soil was screened using 6 mm mesh screens. All test-pits were examined for cultural features and stratigraphy then backfilled. Generally, the soil encountered during the survey was a brown clay over greyish brown clay subsoil.

The rear, or south portion of the property, and the front, or north portion of the property consisted of steep slope descending to a tributary of Cardinal Creek and to Old Montreal Road, respectively totalling 3.4 ha. These areas were not test pitted as per Standard 2.a.iii Section 2.1, but were investigated to confirm the steep slope. Other areas were noted to be deeply disturbed by roadways, driveways, and foundations totalling 0.4 ha. These areas were excluded from assessment as per Standard 2.b. Section 2.1. The extent of testing and exclusion areas were mapped using a BadElf Survey GPS with WAAS and DGPS enabled, paired to an iPad with ArcGIS Collector (Map 5). Average accuracy at the time of survey was approximately 3 m horizontal.

Field notes and photographs were taken during fieldwork to document the current land conditions (see Map 5 for photo locations by catalogue number) Standard 1.a., Section 7.8.6 (MTCS 2011).

Field work took place over three days from was undertaken from August 2-3, 2018. Weather conditions were clear and sunny with average temperatures of 26° Celsius. Permission to access the property was provided by Fotenn. There were no archaeological resources with cultural heritage value or interest identified during the Stage 2 Archaeological Assessment.

## **6.0 Record of Finds**

Despite having archaeological potential, no archaeological remains, artifacts, or culturally significant soil profiles were encountered during the Stage 2 investigations of the study area.

See Appendices A, B, and C for record photographs, maps, and field notes.

## **7.0 Analysis and Conclusions**

The Stage 1 assessment concluded that there was potential for both pre-contact Aboriginal and historic Euro-Canadian archaeological resources within the study area (Paterson Group 2013b). As such, a Stage 2 archaeological assessment was conducted on the subject property consisting of a shovel test pit survey at 5 metre intervals.

While the property exhibits indicators of archaeological potential for pre-contact and historic sites, no archaeological remains, artifacts, or culturally significant soil profiles were encountered during the Stage 2 investigations of the study area.

## **8.0 Recommendations**

Based on the results of this investigation it is recommended that:

1. No further archaeological study is required for the study property as delineated in Map 1.

## **9.0 Advice on Compliance with Legislation**

- a. This report is submitted to the *Minister of Tourism and Culture* as a condition of licencing in accordance with Part VI of the *Ontario Heritage Act*, R.S.O. 1990, c 0.18. The report is reviewed to ensure that it complies with the standards and guidelines that are issued by the Minister, and that the archaeological fieldwork and report recommendations ensure the conservation, protection and preservation of the cultural heritage of Ontario. When all matters relating to archaeological sites within the project area of a development proposal have been addressed to the satisfaction of the Ministry of Tourism, Culture and Sport, a letter will be issued by the ministry stating that there are no further concerns with regard to alterations to archaeological sites by the proposed development.
- b. It is an offence under Sections 48 and 69 of the *Ontario Heritage Act* for any party other than a licensed archaeologist to make any alteration to a known archaeological site or to remove any artifact or other physical evidence of past human use or activity from the site, until such time as a licensed archaeologist has completed archaeological fieldwork on the site, submitted a report to the Minister stating that the site has no further cultural heritage value or interest , and the report has been filed in the Ontario Public Register of Archaeology Reports referred to in Section 65.1 of the *Ontario Heritage Act*.
- c. Should previously undocumented archaeological resources be discovered, they may be a new archaeological site and therefore subject to Section 48 (1) of the *Ontario Heritage Act*. The proponent or person discovering the archaeological resources must cease alteration of the site immediately and engage a licenced consultant archaeologist to carry out archaeological fieldwork, in compliance with Section 48 (1) of the *Ontario Heritage Act*.
- d. The *Cemeteries Act*, R.S.O. 1990 c. C.4 and the *Funeral, Burial and Cremation Services Act*, 2002, S.O. 2002, c.33 (when proclaimed in force) require that any person discovering human remains must notify the police or coroner and the Registrar of Cemeteries at the Ministry of Consumer Services.

## **10.0 Closure**

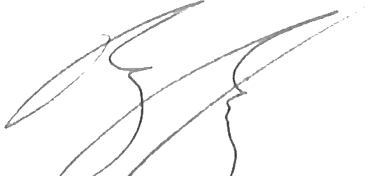
Paterson has prepared this report in a manner consistent with the time limits and physical constraints applicable to this report. No other warranty, expressed or implied is made. The sampling strategies incorporated in this study comply with those identified in the Ministry of Tourism, Culture and Sport's *Standards and Guidelines for Consultant Archaeologists* (2011) however; archaeological assessments may fail to identify all archaeological resources.

The present report applies only to the project described in the document. Use of this report for purposes other than those described herein or by person(s) other than Phoenix Homes, Fotenn or their agent(s) is not authorized without review by this firm for the applicability of our recommendations to the altered use of the report.

This report is pending Ministry approval.

We trust that this report meets your current needs. If you have any questions or we may be of further assistance, please contact the undersigned.

Paterson Group Inc.



Ben Mortimer, M.A., A.P.A.  
Senior Archaeologist



Nadine Kopp, M.A., A.P.A., C.A.H.P.  
Project Archaeologist



## **11.0 Bibliography and Sources**

- Adams, Nick  
2009 *An Archaeological Assessment (Stage 1) of the proposed Development Lands 1730 Wilhaven Road near Orleans, Ontario*. Copies available from PIF# P003-260-2009.
- Ancestry.com  
1861 Census of Canada. The Generations Network, Inc., Provo, UT.  
  
2007 Ontario, Canada Catholic Church Records (Drouin Collection), 1747-1967. The Generations Network, Inc., Provo, UT.
- Archaeological Services Inc.  
1998 *Stage 1 Archaeological Resource Assessment of Trim Road, Russell and Cumberland, regional municipality of Ottawa, Carleton*.
- Archaeological Services Inc. and Geomatics International Inc.  
1999 *The Archaeological Resource Potential Mapping Study of the Regional Municipality of Ottawa-Carleton: Planning Report*. Archaeological Services Inc. and Geomatics International Inc., Ottawa, Ont.
- Assessment Rolls for Cumberland Township  
1834-1848.
- Bond, Courtney C. J.  
1968 *The Ottawa Country*. National Capital Comm., Ottawa.
- Chapman, L. J. and D. F. Putnam  
2007 *The Physiography of Southern Ontario* Miscellaneous Release Data 228. Ontario Geological Survey, Toronto.
- Clermont, N.  
1999 The Archaic Occupation of the Ottawa Valley. In *Ottawa Valley Prehistory*, edited by J.-L. Pilon, pp. 43–53. Imprimerie Gauvin, Hull.
- Coffin, William  
1825 Segment of Township of Cumberland.
- Cumberland Township Historical Society  
2005 *History of Cumberland Township*.  
  
2006 *Memories of Cumberland Township*. Cumberland Township Historical Society, Ottawa, ON.
- Ellis, C. J. and B. D. Deller  
1990 Paleo-Indians. In *The Archaeology of Southern Ontario to A.D. 1650*, edited by C. J. Ellis and N. Ferris, pp. 37–63. vol. 5. Occasional Publications of the London Chapter, OAS, London.
- Engelbrecht, W.  
1999 Iroquoian Ethnicity and Archaeological Taxa. In *Taming the Taxonomy: Toward a New Understanding of Great Lakes Archaeology*, edited by R. F. Williamson and C. M. Watts, pp. 51–60. eastendbooks, Toronto.
- Ferris, Neal  
1999 Telling Tales: Interpretive Trends in Southern Ontario Late Woodland Archaeology. *Ontario Archaeology* 68:1–62.

Golder Associates

---

- 2011a *Stage 2 Archaeological Assessment, Trim Road Realignment, Priority Area 2, Part Lot 30, Concession Ottawa Front and Part Lots C and B, Concession 9, Geographic Township of Cumberland, Ottawa, Ontario.*
- 2011b *Stage 2 Archaeological Assessment, Trim Road Realignment, Priority Area 3, Part Lot 29, 30, 31, 32, Concession Ottawa Front, Geographic Township of Cumberland, Ottawa, Ontario.*
- Hart, John P.  
2012 The Effects of Geographical Distances on Pottery Assemblages and Similarities: A Case Study from Northern Iroquoia. In *Journal of Archaeological Science*, pp. 128–134. vol. 39.
- Hart, John P. and Hetty Jo Brumbach  
2003 The Death of Owasco. *American Antiquity* 68(4):737–752.
- 2005 Cooking Residues, AMS Dates, and the Middle-to-Late Woodland Transition in Central New York. *Northeast Anthropology* 69(Spring):1–34.
- 2009 On Pottery Change and Northern Iroquoian Origins: An Assessment from the Finger Lakes Region of Central New York. *Journal of Anthropological Archaeology* 28 367-381.
- Hart, John P. and W. Englebrecht  
2012 Northern Iroquoian Ethnic Evolution: A Social Network Analysis. In *Journal of Archaeological Method and Theory*, pp. 322–349. vol. 19.
- Heinz, W.A.  
1936 *Historical Research for Cumberland Township*. Unknown, Navan, ON.
- Jamieson, S.  
1999 A Brief History of Aboriginal Social Interactions in Southern Ontario and Their Taxonomic Implications. In *Taming the Taxonomy: Toward a New Understanding of Great Lakes Archaeology*, edited by R. F. Williamson and C. M. Watts, pp. 175-192. eastendbooks, Toronto.
- Joan Holmes & Associates  
1993 Executive Summary. In *Algonquins of Golden Lake Claim*. Ontario Native Affairs Secretariat.
- Kennett, Brenda  
1999 *Stage 1 Archaeological assessment of the Hydro Transmission Corridor from The Hawthorne Transformer Station (Ottawa) to the Cumberland Junction, Regional Municipality of Ottawa Carleton.*
- Laliberté, Marcel  
1999 The Middle Woodland in the Ottawa Valley. In *Ottawa Valley Prehistory*, edited by J.-L. Pilon, pp. 69-81. Imprimerie Gauvin, Hull.
- Laval, University of Toronto/Université  
2000 Dictionary of Canadian Biography Online.
- Martin, Scott W. J.  
2008 Languages Past and Present: Archaeological Approaches to the Appearance of Northern Iroquoian Speakers in the Lower Great Lakes Region of North America. *American Antiquity* 73(3):441-463.
- Ministry of Tourism Culture and Sport  
2011 Standards and Guidelines for Consultant Archaeologists, edited by Ministry of Tourism and Culture. Queen's Printer for Ontario.

Mitchell, B.M.

1963 Occurrence of Overall Corded Pottery in the Upper Ottawa Valley, Canada. *American Antiquity* 29(1):114-115.

Morrison, James

2005 Algonquin History in the Ottawa River Watershed. *Ottawa River: A Background Study for Nomination of the Ottawa River Under the Canadian Heritage Rivers System*:17-36.

Mortimer, B.

2012 Whos Pot is This? Analysis of Middle to Late Woodland Ceramics From the Kitchikewana Site, Georgian Bay Islands National Park of Canada. Unpublished M.A. Thesis, Department of Anthropology, Trent University, Peterborough.

OLR

Ontario Land Registry Office Records, Ontario.

Paterson Group

2012 *Revised Stage 1 and 2 Archaeological Assessment Proposed Cardinal Creek Development - Part Lot 28, Ottawa, Ontario*. Copies available from P369-002-2012.

2013a *Revised Stage 1 Archaeological Assessment Proposed Cardinal Creek Development, Lands North of Old Montreal Rd. Part Lot 25, 26, 27 and 28, Concession 1 in the Geographic Township of Cumberland, Historic County of Russell, Ottawa, Ontario*. Copies available from P369-001-2012.

2013b *Revised Stage 1 Archaeological Assessment Proposed Cardinal Creek Development, Lands South of Old Montreal Rd. Part Lot 25, 26, and 27, and 28 Concession 1 and Part Lot C, D, and E Concession 8 in the Geographic Township of Cumberland, Historic County of Russell, Ottawa, Ontario*. Copies available from P369-003-2012.

2013c *Stage 1 and 2 Archaeological Assessment: Proposed Commercial Development, 955 Dairy Drive, Part Lot 30 Concession 1, Geographic Township of Cumberland, Ottawa, Ontario*.

2013d *Stage 2 Archaeological Assessment Proposed Cardinal Creek Development, Part Lot 25, 26, 27 and 28, Concession 1 and Part Lot C, D, and E Concession 8 in the Geographic Township of Cumberland, Historic County of Russell, Ottawa, Ontario*. Copies available from P369-005-2012.

2016a *Stage 1 Archaeological Assessment: 1375 Trim Road, Part Lot 30, Concession 1, Geographic Township of Cumberland, Carleton County, City of Ottawa, Ontario*. Copies available from P378-0018-2016.

2016b *Stage 2 Archaeological Assessment: 1375 Trim Road, Part Lot 30, Concession 1, Geographic Township of Cumberland, Carleton County, City of Ottawa, Ontario*. Copies available from P378-0018-2016.

Pilon, J.-L.

2005 Ancient History of the Lower Ottawa River Valley. *Ottawa River: A Background Study for Nomination of the Ottawa River Under the Canadian Heritage Rivers System*:12-17.

Reid, William D

1973 *The Loyalists in Ontario: The Sons and Daughters of the American Loyalists of Upper Canada*. Hunterdon House, Lamberstville, NJ.

Ritchie, W. A.

1969 *The Archaeology of New York State*. Revised ed. The Natural History Press, Garden City.

Schut, L.W. and E.A. Wilson

1987 *The Soils of the Regional Municipality of Ottawa-Carleton (Excluding the Ottawa Urban Fringe)*. Soil Survey Report No. 58 of the Ontario Institute of Pedology Volume 1. Agriculture Canada, Ottawa.

Serré, Bob

2001a Early Pioneers. *The Caboose: Newsletter of the Cumberland Township Historical Society* XIV(2).

2001b The First Catholic Parish in Cumberland Township. *The Caboose: Newsletter of the Cumberland Township Historical Society* XIII(5).

Statistics Canada

1851 Census of Canada East, Canada West, New Brunswick, and Nova Scotia vol. 2012. Library and Archives Canada.

1871 Census of Canada. vol. 2012, Library and Archives of Canada.

1881 Census of Canada, Library and Archives of Canada.

1891 Census of Canada. vol. 2012, Library and Archives of Canada.

Swayze, Ken

2001 *Stage 1 & 2 Archaeological Assessment of a Proposed Subdivision on Part of Lots A, B & C, Conc. 8 & 9, Cumberland Township (Geo), City of Ottawa.*

Trigger, B. G.

1986 *Natives and Newcomers: Canada's "Heroic Age" Reconsidered.* McGill-Queen's University Press, Montreal.

Watson, Gordon D.

1972 A Woodland Indian Site at Constance Bay, Ontario. *Ontario Archaeology* 18:1-24.

1980 The Wyght Site: A Multicomponent Woodland Site on the Lower Rideau Lake, Leeds County, Ontario. Unpublished M.A. Thesis, Department of Anthropology, Trent University, Peterborough.

1990 Paleo-Indian and Archaic Occupations of the Rideau Lakes. *Ontario Archaeology* 50:5-26.

1999 The Paleo-Indian Period in the Ottawa Valley. In *Ottawa Valley Prehistory*, edited by J.-L. Pilon, pp. 28-41. Imprimerie Gauvin, Hull.

Wright, James V.

1966 *The Ontario Iroquois Tradition.* Bulletin 210. National Museum of Canada, Ottawa.

2004 *A History of the Native People of Canada: Volume III (A.D. 500 - European Contact).* National Museum of Canada Mercury Series, Archaeological Survey of Canada Paper No. 152. Canadian Museum of Civilization, Hull.

**12.0 Images**



**Figure 1: Overgrown fallow field area (D11).**



**Figure 2: View of overgrown fallow field looking towards cell tower (D15).**



**Figure 3: Wooded area on west side of the study area (D51).**



**Figure 4: Steep slope down to Old Montreal Road (D31).**



**Figure 5: Steep slope down to Old Montreal Road (D20).**



**Figure 6: Steep slope leading to ravine (D12).**



**Figure 7: From bottom of steep slope towards the ravine looking up to fallow field area (D14).**





**Figure 8: Steep slope towards the ravine visualized with field crew standing at different heights (D41).**



**Figure 9: Test pitting in fallow field area (D24).**



**Figure 10: Test pitting in wooded area (D50).**

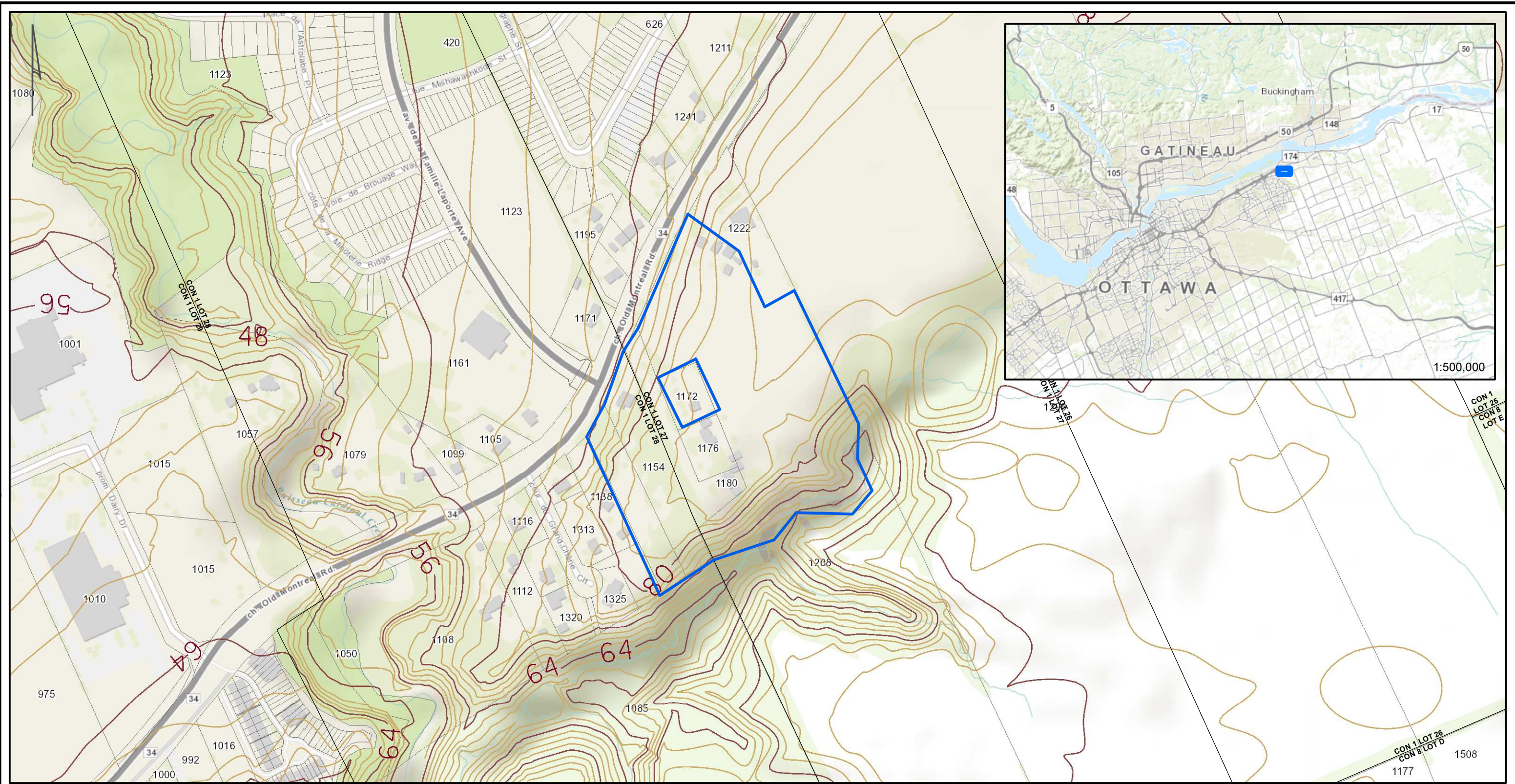


**Figure 11: Test pitting around one of the vacant houses (D05).**

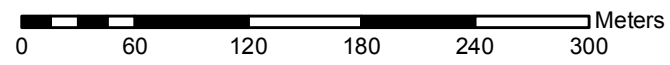


**Figure 12: Test pitting around vacant house along Old Montreal Road (D57).**

### **13.0 Maps**



 DEVELOPMENT AREA



**REFERENCES:**

PROJECTION: TRANSVERSE MERCATOR DATUM NAD 83, UTM ZONE 18  
 SERVICE LAYER CREDITS: CITY OF OTTAWA  
 SOURCES: ESRI, HERE, GARMIN, INTERMAP, INCREMENT P CORP., GEBCO, USGS, FAO, NPS, NRCAN, GEOBASE, IGN, KADASTER NL, ORDNANCE SURVEY, ESRI JAPAN, METI, ESRI CHINA (HONG KONG), SWISSTOPO, © OPENSTREETMAP CONTRIBUTORS, AND THE GIS USER

**paterson group**  
 consulting engineers  
 154 Colonnade Road South, Ottawa, Ontario K2E 7J5

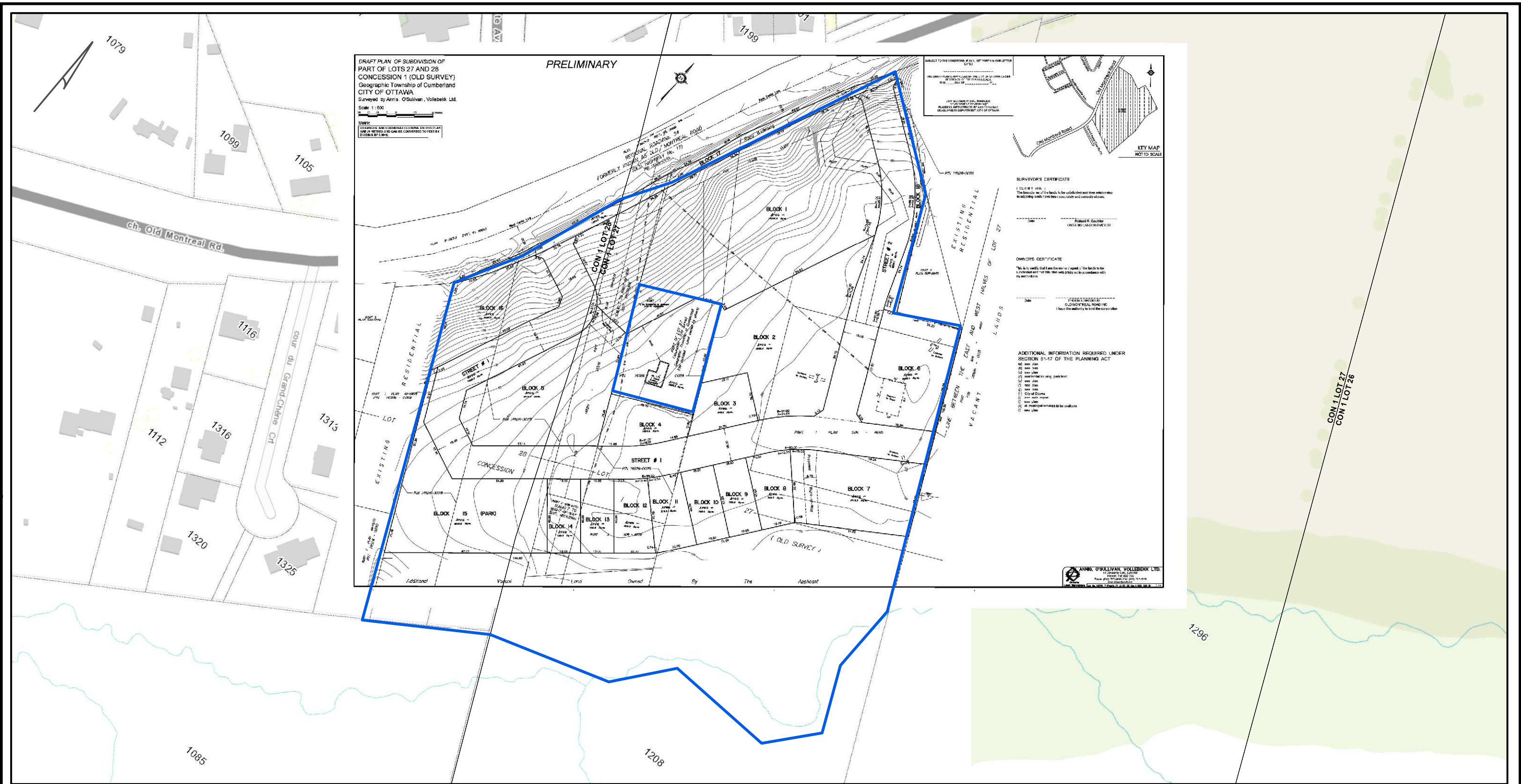
Scale 1:4,000  
 Des BM  
 Drawn BM  
 Chkd BM

Project PA1105  
 Borden None

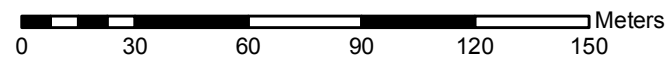
STAGE 2 ARCHAEOLOGICAL ASSESSMENT  
 PROPOSED RESIDENTIAL DEVELOPMENT  
 OLD MONTREAL ROAD, OTTAWA, ON

LOCATION

File: PA1105 - MAP LOCATION  
 Date: 31/08/2018  
 Map: 1

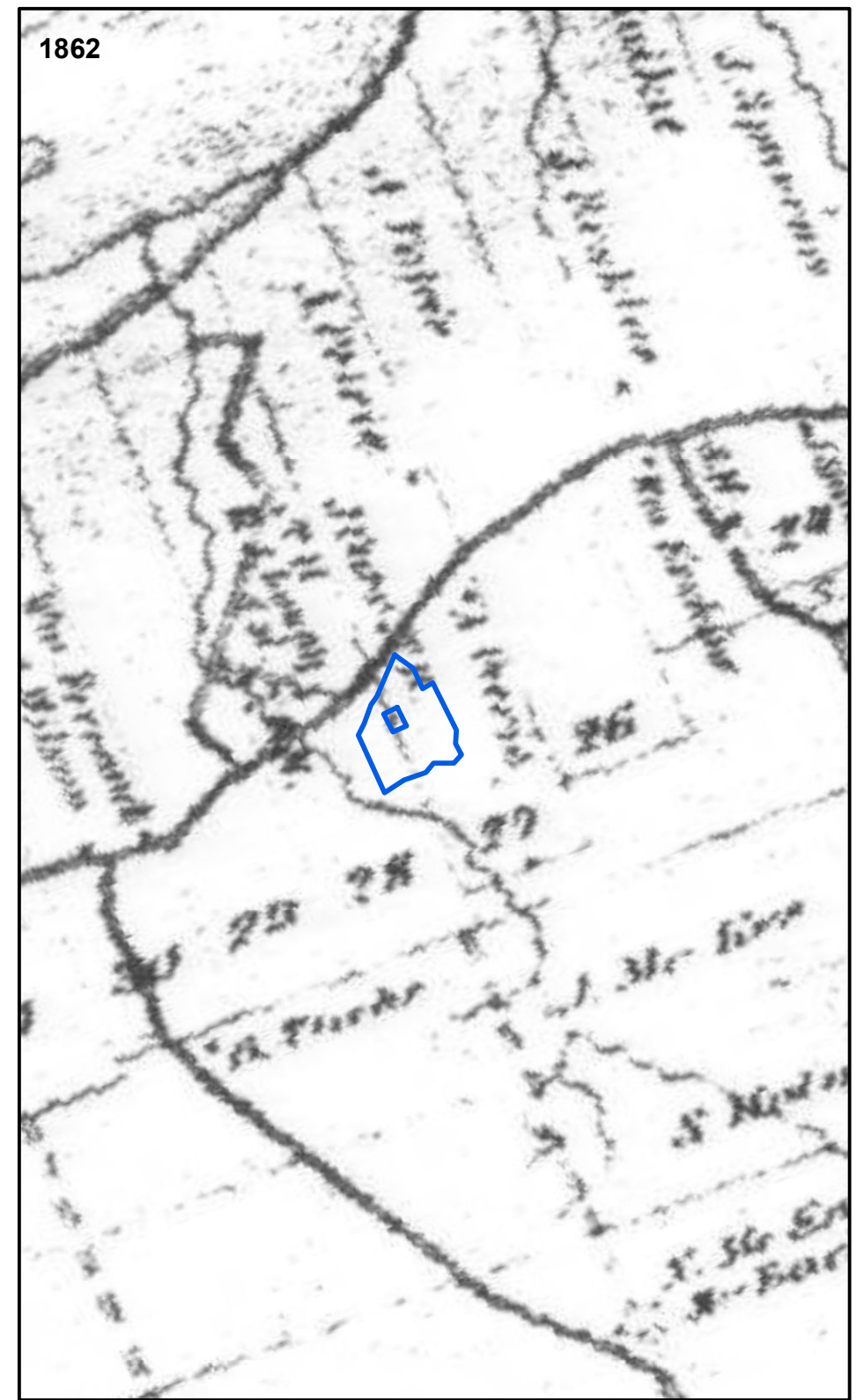
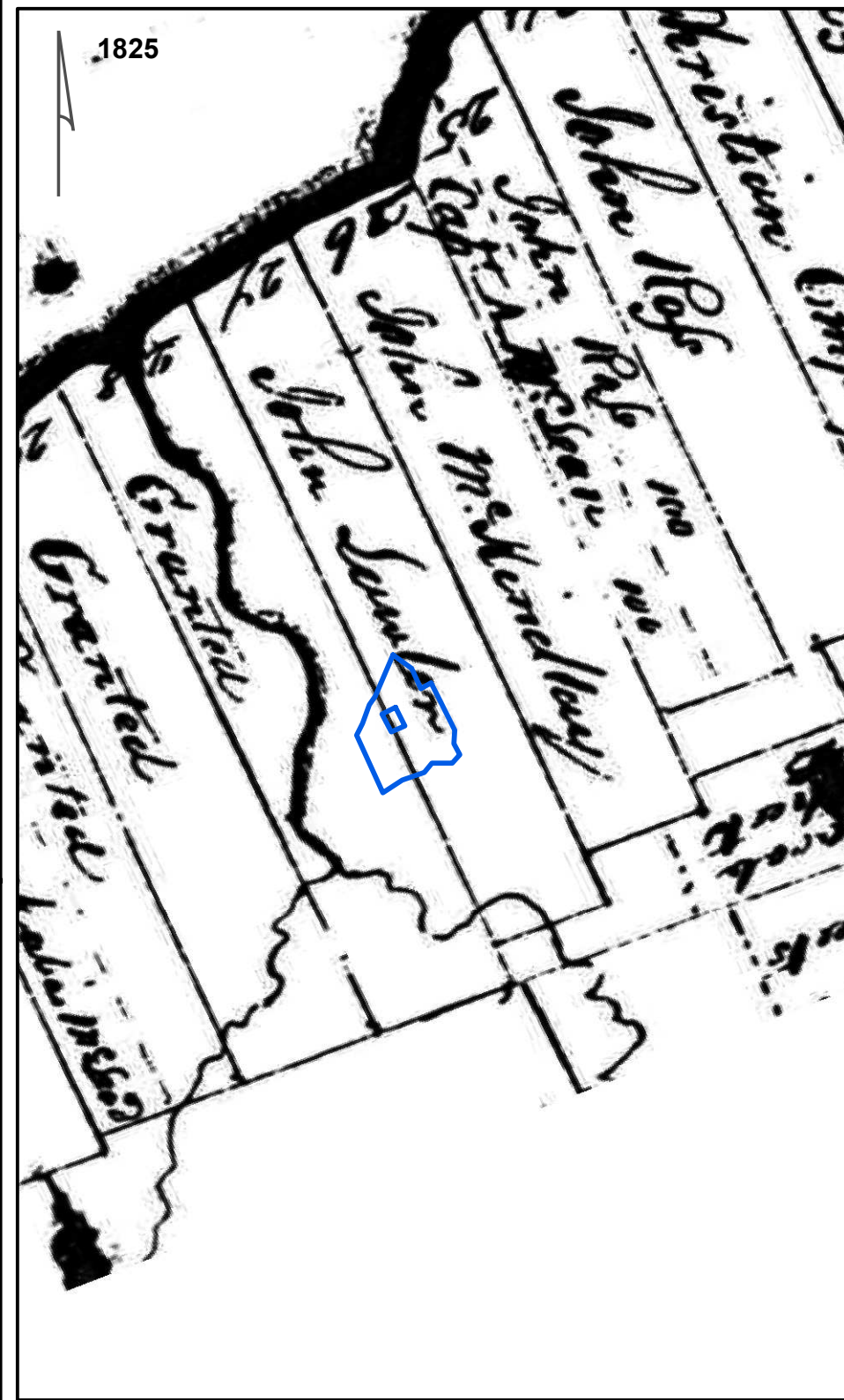


DEVELOPMENT AREA

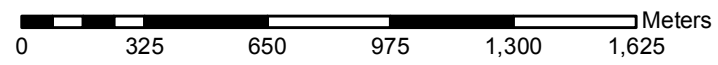


**REFERENCES:**  
 PROJECTION: TRANSVERSE MERCATOR DATUM NAD 83, UTM ZONE 18  
 SERVICE LAYER CREDITS: CITY OF OTTAWA  
 DRAFT PLAN OF SUBDIVISION PROVIDED BY FOTENN, NOT DATED

consulting engineers 154 Colonnade Road South, Ottawa, Ontario K2E 7J5	Scale 1:2,000 Des BM Drawn BM Chkd BM	Project PA1105 Borden None	STAGE 2 ARCHAEOLOGICAL ASSESSMENT PROPOSED RESIDENTIAL DEVELOPMENT OLD MONTREAL ROAD, OTTAWA, ON	DEVELOPMENT MAP	File: PA1105 - MAP DM Date: 31/08/2018 Map: 2
	File: PA1105 - MAP DM Date: 31/08/2018 Map: 2				

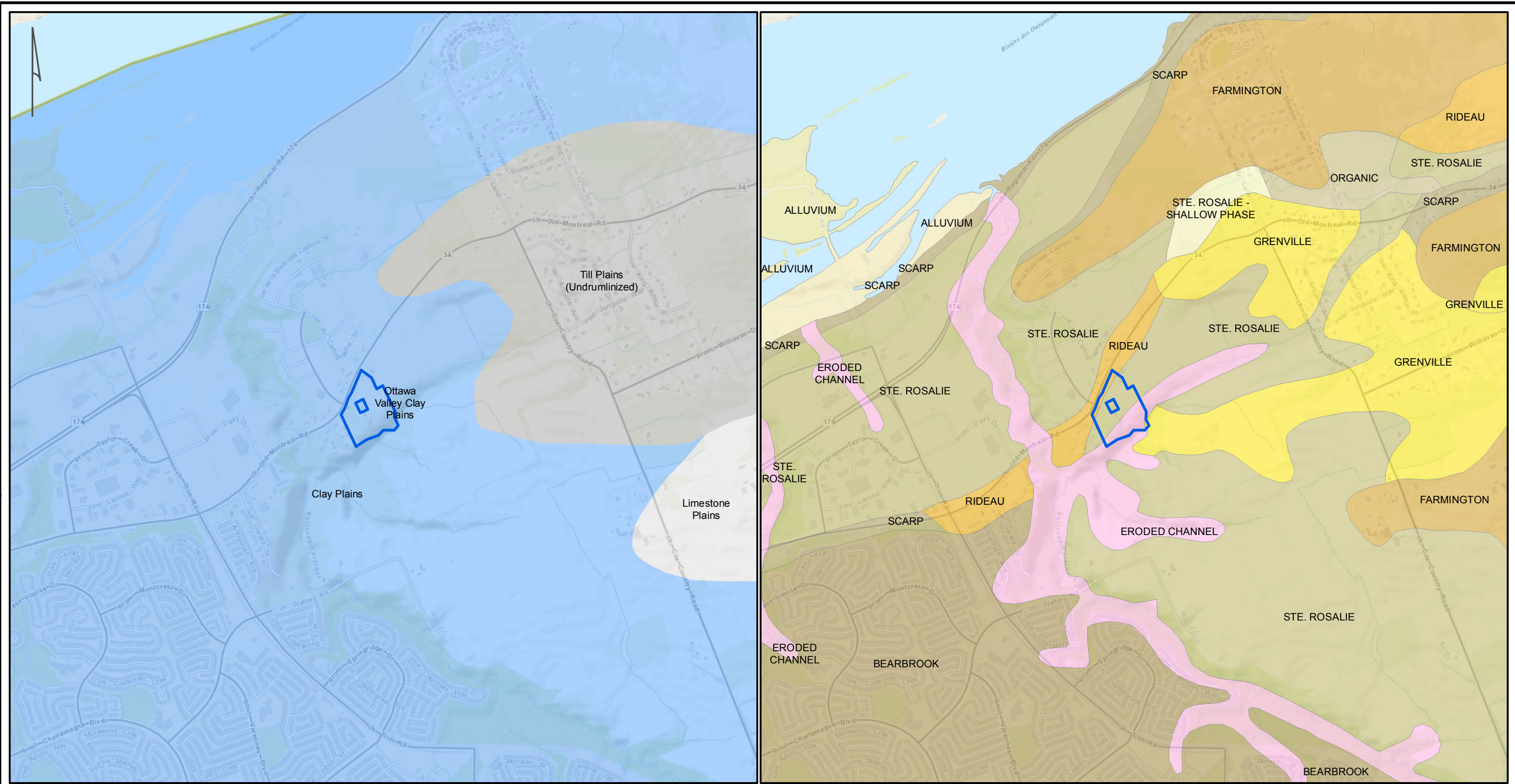


 DEVELOPMENT AREA

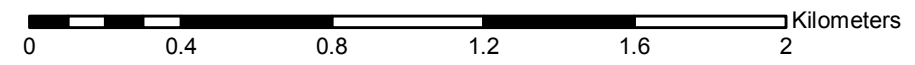


**REFERENCES:**

PROJECTION: TRANSVERSE MERCATOR DATUM NAD 83, UTM ZONE 18  
 SERVICE LAYER CREDITS:  
 SEGMENT OF TOWNSHIP OF CUMBERLAND, COFFIN, 1825 (NMC 3425)  
 SEGMENT OF MAP FROM ASSESSMENT ROLLS FOR CUMBERLAND TOWNSHIP 1834-1848  
 SEGMENT OF PLAN OF THE COUNTIES OF STORMONT, DUNDAS, GLENGARRY, PRESCOTT AND RUSSELL, WALLING 1862 (NMC 21998).

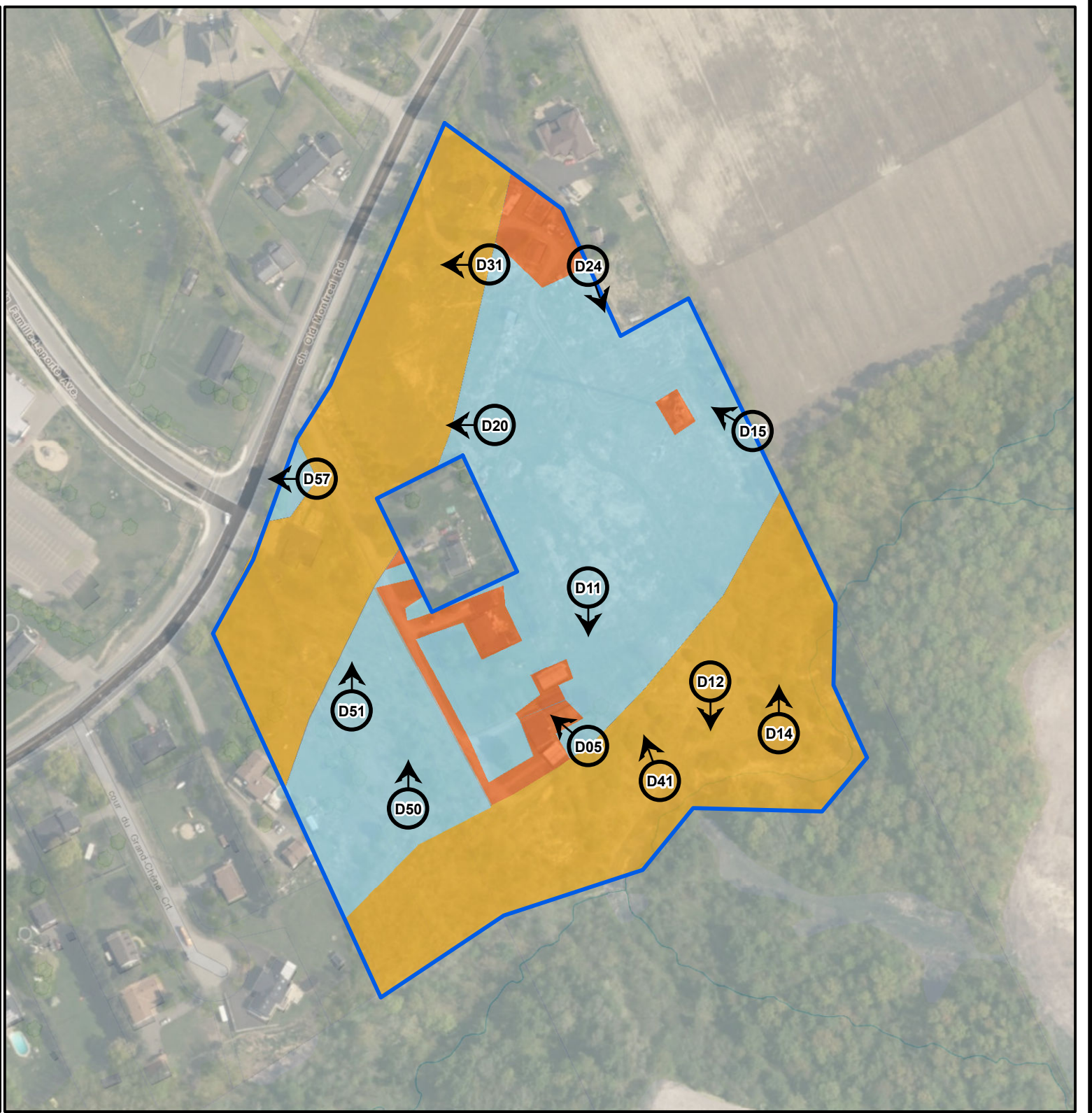


DEVELOPMENT AREA



**REFERENCES:**  
 PROJECTION: TRANSVERSE MERCATOR DATUM NAD 83, UTM ZONE 18  
 SERVICE LAYER CREDITS: CITY OF OTTAWA  
 CHAPAM AND PUTNAM 2007 PHYSIOGRAPHY OF SOUTHERN ONTARIO  
 ONTARIO MINISTRY OF AGRICULTURE AND FOOD, 2003. SOIL SURVEY COMPLEX).





**TESTING METHODS**

**EXCLUSIONS**

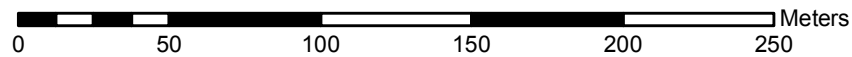
- DEEPLY DISTURBED (ROADS, DRIVEWAYS, FOUNDATIONS)
- SLOPE >20%

**TESTING METHOD**

- SHOVEL TESTING (5 m INTERVAL)

DEVELOPMENT AREA

PHOTO LOCATION, DIRECTION, AND CATALOGUE NUMBER



**REFERENCES:**

PROJECTION: TRANSVERSE MERCATOR DATUM NAD 83, UTM ZONE 18  
 SERVICE LAYER CREDITS: CITY OF OTTAWA  
 CIRCA 2017 AERIAL BASE LAYER AND TOPOGRAPHIC CONTOURS CITY OF OTTAWA GEOOTTAWA.

**Appendix A: Photographic Catalogue**

<b>Catalogue Number</b>	<b>Subject</b>	<b>Direction</b>	<b>Date</b>	<b>Photographer</b>
<b>PA1105-D01</b>	Test pitting in front of vacant house	NE	2018-08-02	NK
<b>PA1105-D02</b>	View looking down into ravine	S	2018-08-02	NK
<b>PA1105-D03</b>	Steep slope leading to ravine	E	2018-08-02	NK
<b>PA1105-D04</b>	View looking down into ravine	S	2018-08-02	NK
<b>PA1105-D05</b>	Test pitting around one of the vacant houses	NW	2018-08-02	NK
<b>PA1105-D06</b>	Typical test pit		2018-08-02	NK
<b>PA1105-D07</b>	Test pitting around one of the vacant houses	S	2018-08-02	NK
<b>PA1105-D08</b>	Test pitting around one of the vacant houses	N	2018-08-02	NK
<b>PA1105-D09</b>	Test pitting around one of the vacant houses	NW	2018-08-02	NK
<b>PA1105-D10</b>	View looking towards cell tower	NW	2018-08-02	NK
<b>PA1105-D11</b>	Test pitting in fallow field area	S	2018-08-02	NK
<b>PA1105-D12</b>	Steep slope leading to ravine	S	2018-08-02	NK
<b>PA1105-D13</b>	Steep slope leading to ravine	S	2018-08-02	NK
<b>PA1105-D14</b>	From bottom of steep slope looking up to fallow field area	N	2018-08-02	NK
<b>PA1105-D15</b>	View looking towards cell tower	NW	2018-08-02	NK
<b>PA1105-D16</b>	Test pitting in fallow field area	S	2018-08-02	NK
<b>PA1105-D17</b>	Cell Tower	W	2018-08-02	NK
<b>PA1105-D18</b>	Test pitting in fallow field area	S	2018-08-02	NK
<b>PA1105-D19</b>	Test pitting around one of the vacant houses	E	2018-08-02	NK
<b>PA1105-D20</b>	View downslope to Old Montreal Road	NW	2018-08-02	NK
<b>PA1105-D21</b>	View downslope to Old Montreal Road	N	2018-08-02	NK
<b>PA1105-D22</b>	Test pitting in fallow field area	S	2018-08-02	NK
<b>PA1105-D23</b>	Rubble area in NE corner of field	NE	2018-08-02	NK
<b>PA1105-D24</b>	Test pitting in fallow field area	S	2018-08-02	NK
<b>PA1105-D25</b>	Rubble area in NE corner of field	N	2018-08-02	NK
<b>PA1105-D26</b>	Rubble area in NE corner of field	SE	2018-08-02	NK
<b>PA1105-D27</b>	Rubble area in NE corner of field	E	2018-08-02	NK
<b>PA1105-D28</b>	Driveway down to Old Montreal Road in NE corner of field	N	2018-08-02	NK
<b>PA1105-D29</b>	Rubble area in NE corner of field	NE	2018-08-02	NK
<b>PA1105-D30</b>	Steep slope down to Old Montreal Road	N	2018-08-02	NK
<b>PA1105-D31</b>	Steep slope down to Old Montreal Road	NW	2018-08-02	NK
<b>PA1105-D32</b>	Driveway down to Old Montreal Road in NE corner of field	N	2018-08-02	NK
<b>PA1105-D33</b>	Test pitting in fallow field area	S	2018-08-02	NK
<b>PA1105-D34</b>	Test pitting in fallow field area	SW	2018-08-02	NK
<b>PA1105-D35</b>	Test pitting in fallow field area	E	2018-08-02	NK
<b>PA1105-D36</b>	Marshy area near the ravine	E	2018-08-02	NK
<b>PA1105-D37</b>	Steep slope looking up from ravine	N	2018-08-02	NK
<b>PA1105-D38</b>	Steep slope towards ravine	W	2018-08-02	NK

Catalogue Number	Subject	Direction	Date	Photographer
<b>PA1105-D39</b>	Steep slope towards ravine	N	2018-08-02	NK
<b>PA1105-D40</b>	Steep slope towards ravine	E	2018-08-02	NK
<b>PA1105-D41</b>	Steep slope visualized with field crew standing at different heights	N	2018-08-02	NK
<b>PA1105-D42</b>	Steep slope and the ravine	W	2018-08-02	NK
<b>PA1105-D43</b>	Steep slope leading to ravine	W	2018-08-02	NK
<b>PA1105-D44</b>	Steep slope leading to ravine	N	2018-08-02	NK
<b>PA1105-D45</b>	Steep slope leading to ravine	W	2018-08-02	NK
<b>PA1105-D46</b>	Steep slope leading to ravine	W	2018-08-02	NK
<b>PA1105-D47</b>	Steep slope leading to ravine	S	2018-08-03	NK
<b>PA1105-D48</b>	Typical test pit		2018-08-03	NK
<b>PA1105-D49</b>	Test pitting in wooded area	N	2018-08-03	NK
<b>PA1105-D50</b>	Test pitting in wooded area	N	2018-08-03	NK
<b>PA1105-D51</b>	Test pitting in wooded area	N	2018-08-03	NK
<b>PA1105-D52</b>	Test pitting in wooded area	N	2018-08-03	NK
<b>PA1105-D53</b>	Test pitting in wooded area	N	2018-08-03	NK
<b>PA1105-D54</b>	Test pitting in wooded area	N	2018-08-03	NK
<b>PA1105-D55</b>	Test pitting around vacant house along Old Montreal Road	N	2018-08-03	NK
<b>PA1105-D56</b>	Test pitting around vacant house along Old Montreal Road	W	2018-08-03	NK
<b>PA1105-D57</b>	Test pitting around vacant house along Old Montreal Road	E	2018-08-03	NK
<b>PA1105-D58</b>	Test pitting around vacant house along Old Montreal Road	W	2018-08-03	NK
<b>PA1105-D59</b>	Test pitting around vacant house along Old Montreal Road	S	2018-08-03	NK

**Appendix B: Map Catalogue**

<b>Map Number</b>	<b>Description</b>	<b>Created By</b>
1	Location	B. Mortimer
2	Development Plan	B. Mortimer
3	Historic	B. Mortimer
4	Physiography and Soils	B. Mortimer
5	Methods, Conditions and Photo Key	B. Mortimer

**Appendix C: Document Catalogue**

<b>Project</b>	<b>Description</b>	<b>Created By</b>
PA1105	Old Montreal Road - Field Notes Stage 2 Site Survey (scanned to PDF "PA1105 – Old Montreal Road Field Notes.pdf")	N. Kopp