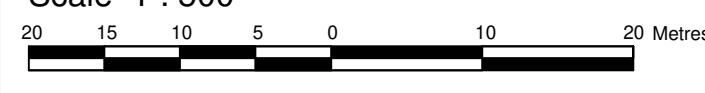


**DRAFT PLAN OF SUBDIVISION OF  
PART OF LOTS 27 AND 28  
CONCESSION 1 (OLD SURVEY)**

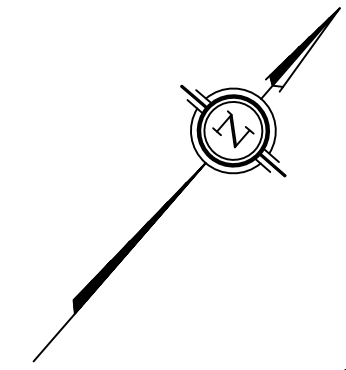
Geographic Township of Cumberland  
CITY OF OTTAWA

Surveyed by Annis, O'Sullivan, Vollebek Ltd.



Metric  
DISTANCES AND COORDINATES SHOWN ON THIS PLAN  
ARE IN METRES AND CAN BE CONVERTED TO FEET BY  
DIVIDING BY 0.3048.

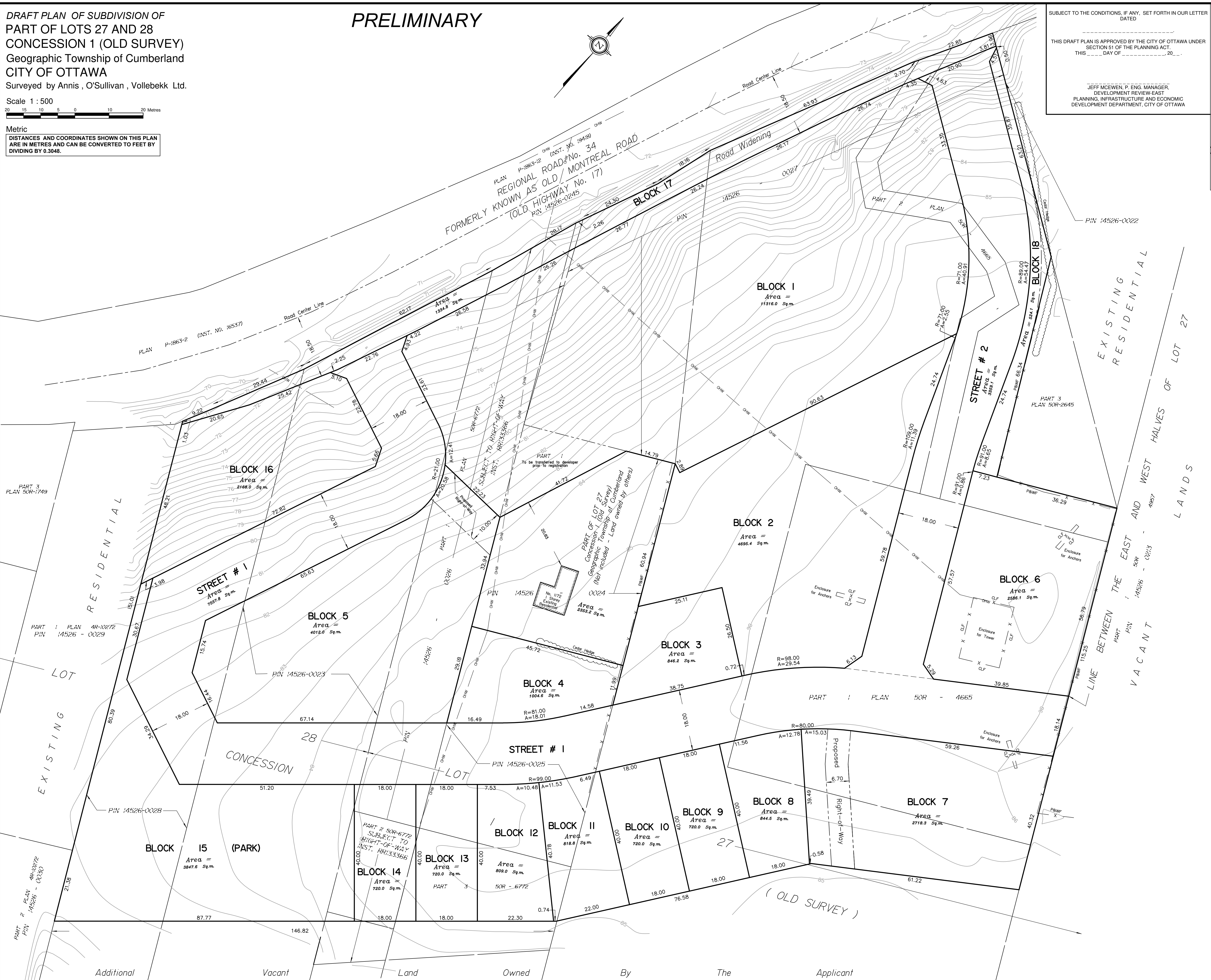
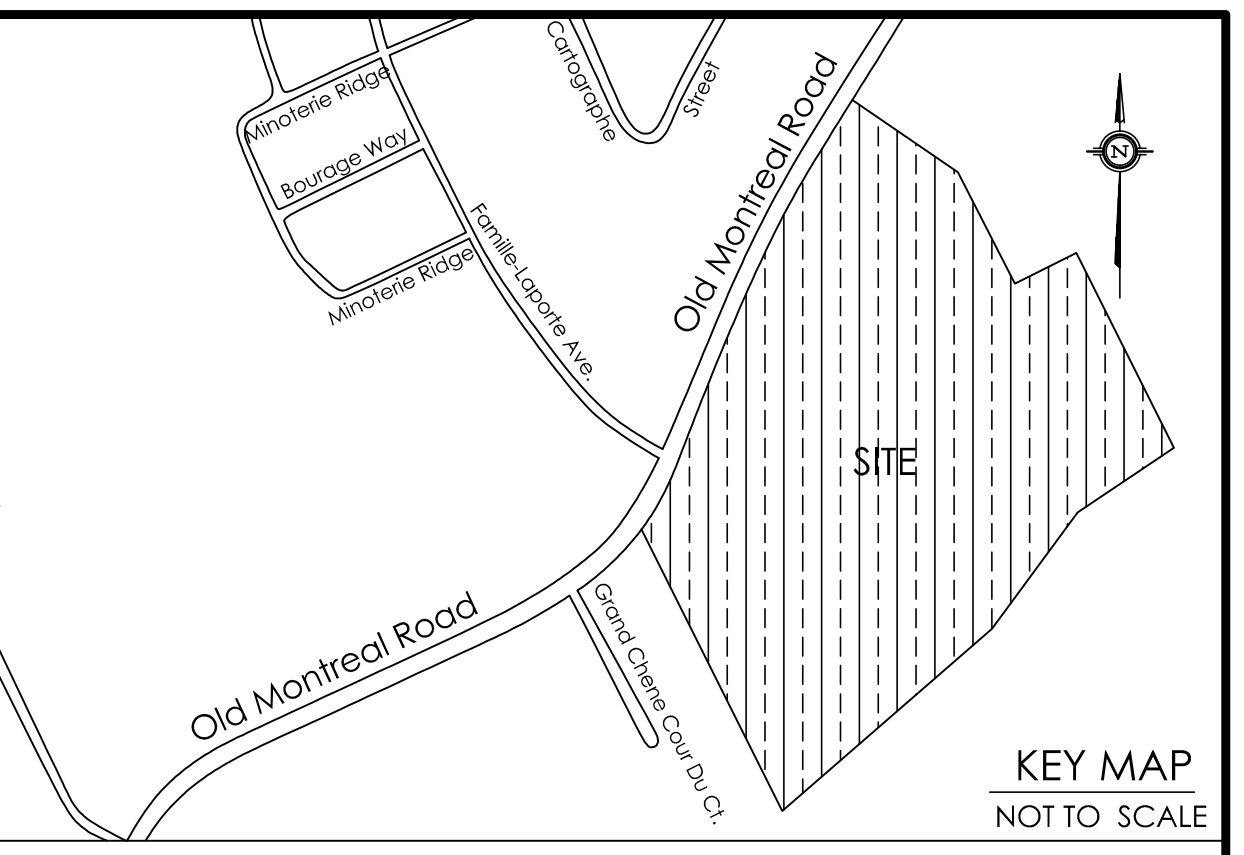
**PRELIMINARY**



SUBJECT TO THE CONDITIONS, IF ANY, SET FORTH IN OUR LETTER DATED \_\_\_\_\_

THIS DRAFT PLAN IS APPROVED BY THE CITY OF OTTAWA UNDER SECTION 51 OF THE PLANNING ACT.  
THIS \_\_\_\_\_ DAY OF \_\_\_\_\_, 20\_\_\_\_.

JEFF MCEWEN, P. ENG. MANAGER,  
DEVELOPMENT REVIEW-EAST  
PLANNING, INFRASTRUCTURE AND ECONOMIC  
DEVELOPMENT DEPARTMENT, CITY OF OTTAWA



**SURVEYOR'S CERTIFICATE**

I CERTIFY THAT:  
The boundaries of the lands to be subdivided and their relationship to adjoining lands have been accurately and correctly shown.

Date \_\_\_\_\_ Richard R. Gauthier  
ONTARIO LAND SURVEYOR

**OWNER'S CERTIFICATE**

This is to certify that I am the owner / agent of the lands to be subdivided and that this plan was prepared in accordance with my instructions.

Date \_\_\_\_\_ PHOENIX HARBOUR  
OLD MONTREAL ROAD INC.  
I have the authority to bind the corporation

**ADDITIONAL INFORMATION REQUIRED UNDER SECTION 51-17 OF THE PLANNING ACT**

- (a) see plan
- (b) see plan
- (c) see plan
- (d) residential housing, park land
- (e) see plan
- (f) see plan
- (g) see plan
- (h) City of Ottawa
- (i) see soils report
- (j) see plan
- (k) all municipal services to be available
- (l) see plan