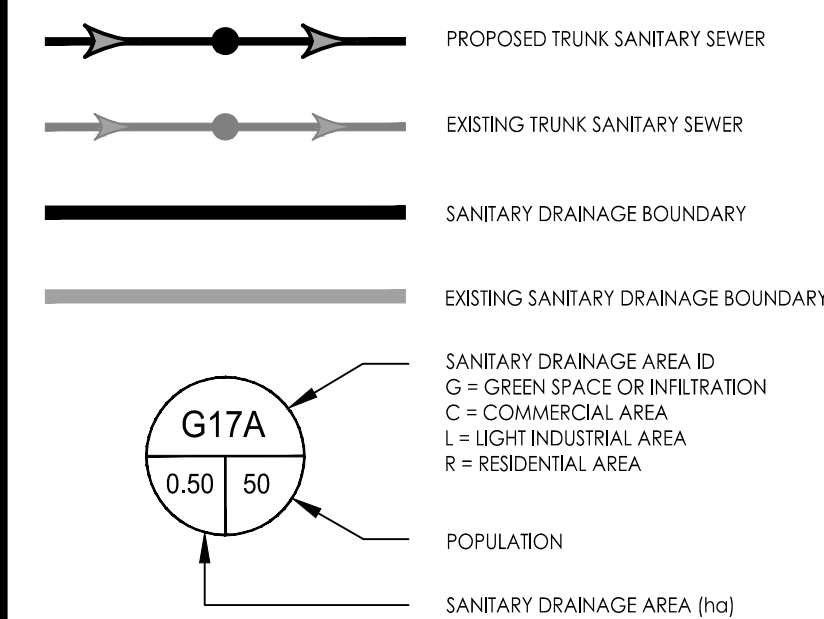


Copyright Reserved

The Contractor shall verify and be responsible for all dimensions. DO NOT scale the drawing - any errors or omissions shall be reported to Stantec without delay.
The Copyrights to all designs and drawings are the property of Stantec. Reproduction or use for any purpose other than that authorized by Stantec is forbidden.

Legend



Notes

1	ISSUED FOR DRAFT PLAN OF SUBDIVISION	DT	KS	18.04.11
Revision		By	Appd.	YY.MM.DD

File Name:	160401242-DB	DT	KS	DT	18.04.09
		Desn.	Chkd.	Dsgn.	YY.MM.DD

Permit-Seal

Client/Project
INNES SHOPPING CENTRES LIMITED

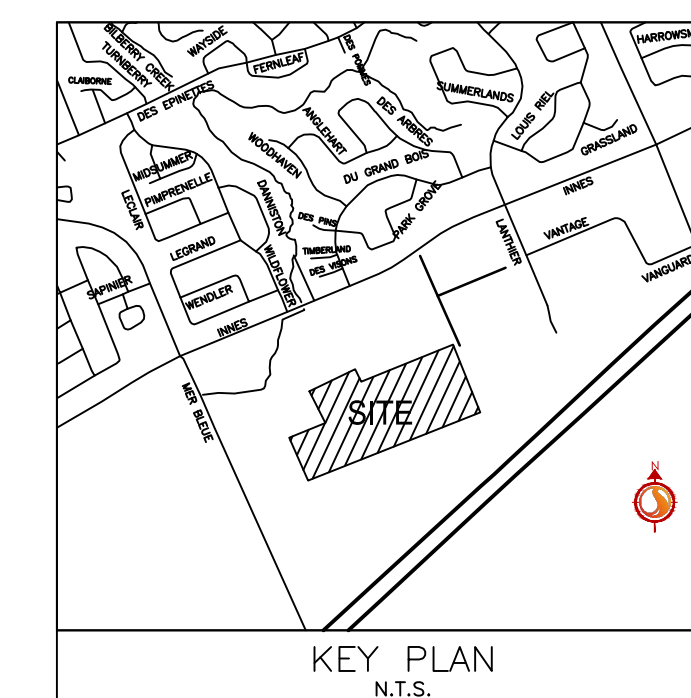
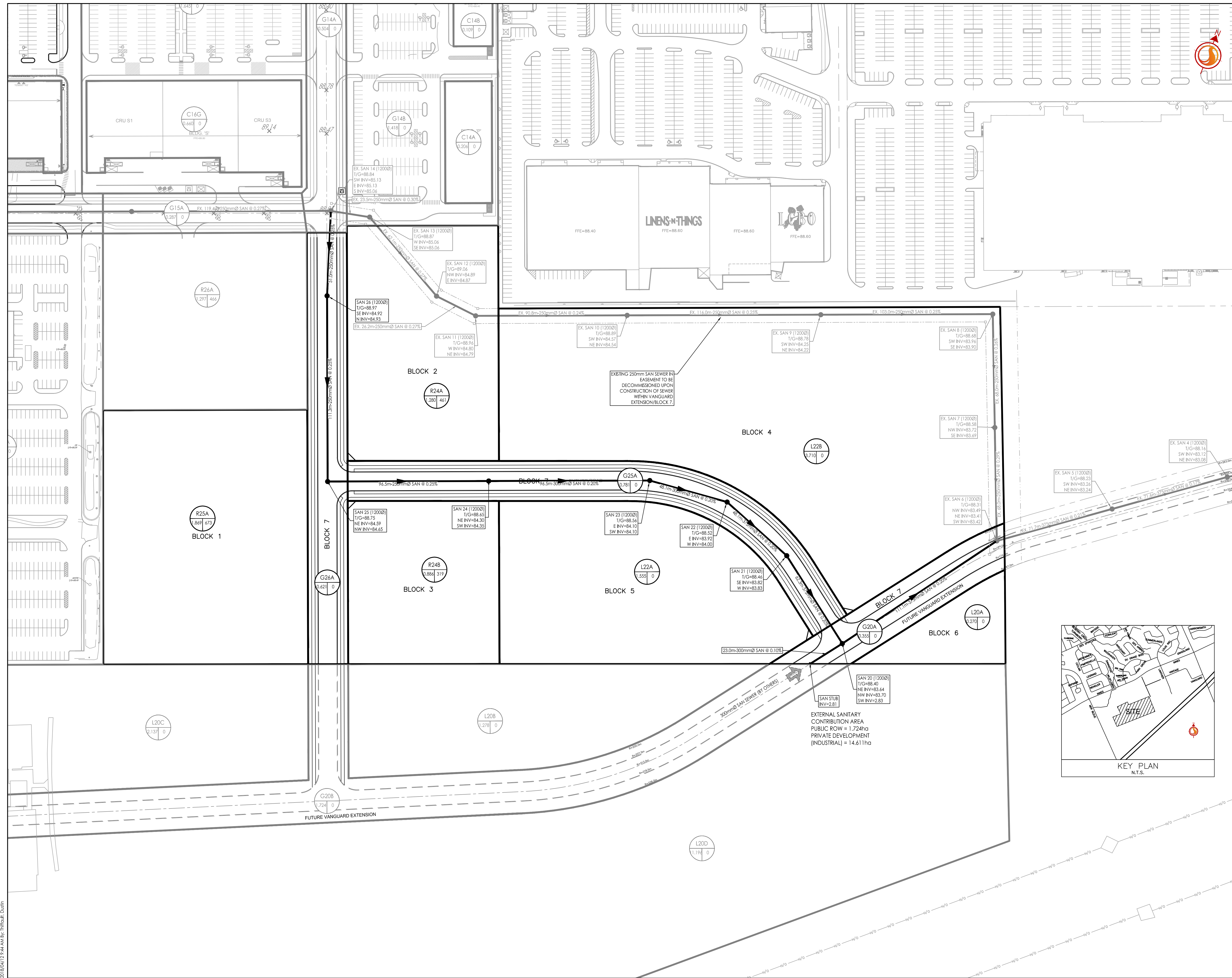
ORLEANS II
DRAFT PLAN OF SUBDIVISION
Ottawa, ON

Title

OVERALL SANITARY SEWER LAYOUT

Project No.	Scale	0	10	30	50m
160401419	1:1000				

Drawing No.	Sheet	Revision
SA-1	1 of 4	1



Legend

- TRUNK STORM SEWER
- EXISTING TRUNK STORM SEWER
- FUTURE TRUNK STORM SEWER
- MAJOR OVERLAND FLOW ROUTE
- DRAINAGE AREA No.
- CONTROLLED RELEASE RATE (L/s)
- STORM DRAINAGE AREA (ha)
- STORM DRAINAGE BOUNDARY
- FUTURE STORM DRAINAGE BOUNDARY
- MAJOR SYSTEM DIVIDE

Notes

1 ISSUED FOR DRAFT PLAN OF SUBDIVISION DT KS 18.04.11

Revision By Appd. Y Y.M.M.D.D

File Name: 160401242-DB DT KS DT 18.04.09

Permit-Seal Dwn. Chkd. Dsgn. Y Y.M.M.D.D

Client/Project
INNES SHOPPING CENTRES LIMITED

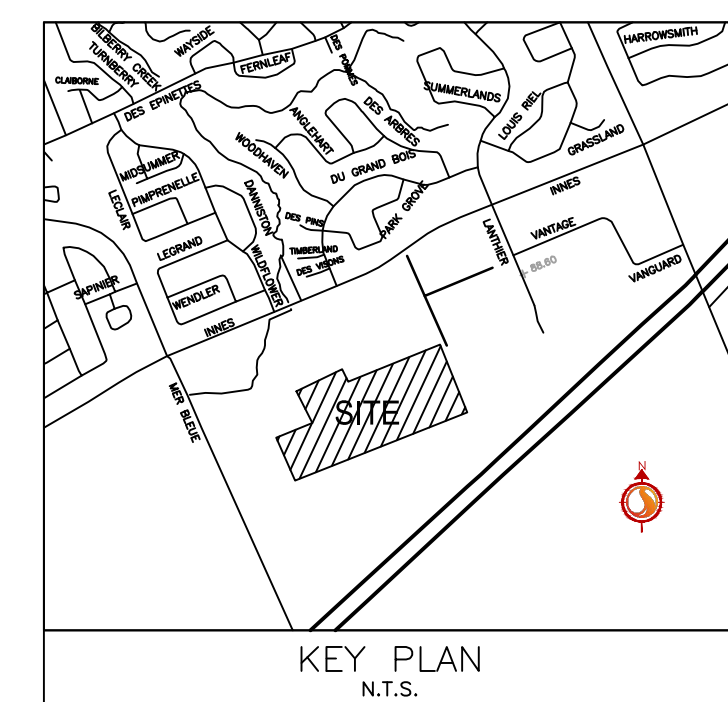
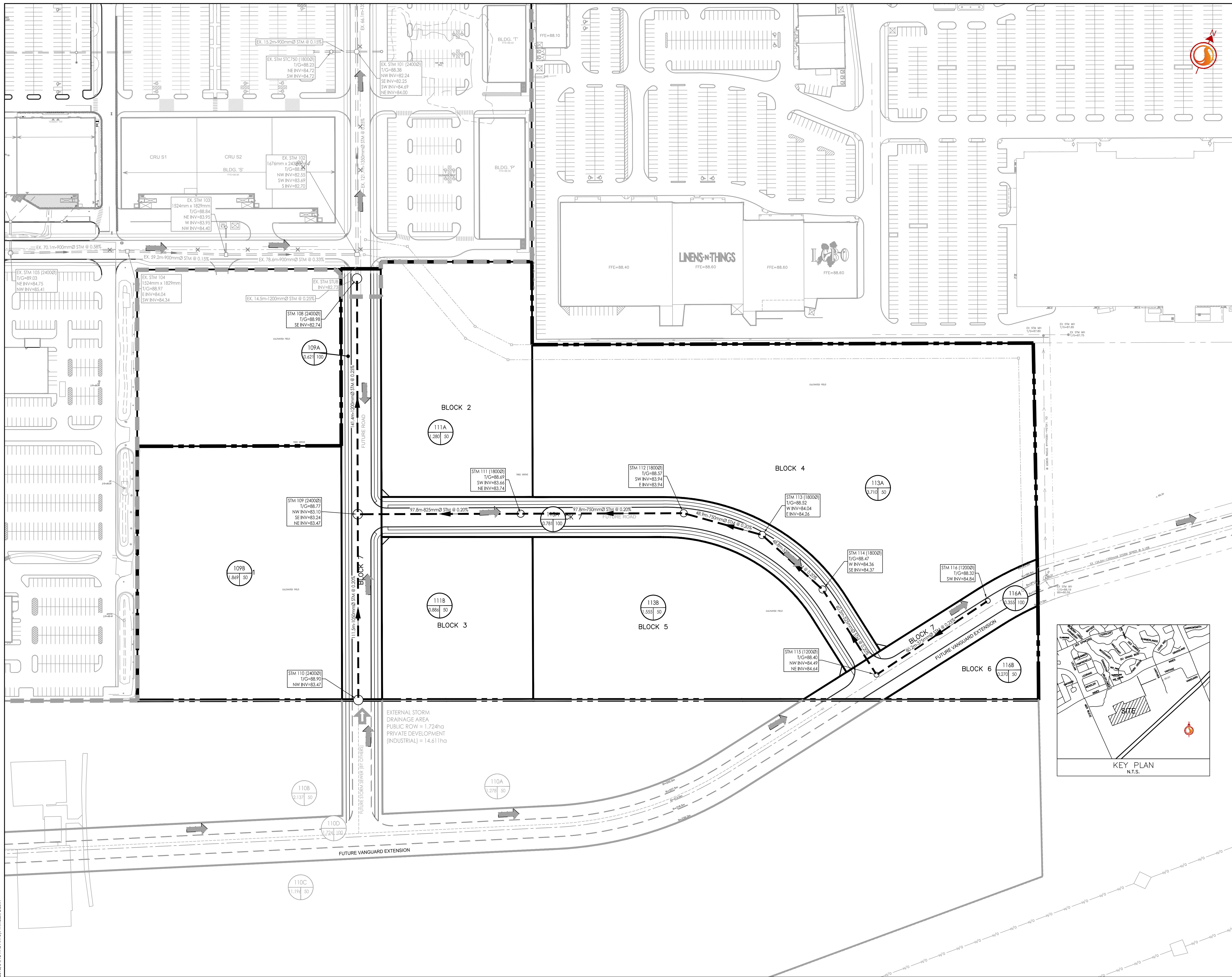
ORLEANS II
DRAFT PLAN OF SUBDIVISION
Ottawa, ON

Title
OVERALL STORM SEWER LAYOUT

Project No. 160401419 Scale 1:1000

Drawing No. Sheet 2 of 4 Revision 1




SD-1 2 of 4 1









EXTERNAL STORM DRAINAGE AREA
PUBLIC ROW = 1.724ha
PRIVATE DEVELOPMENT (INDUSTRIAL) = 14.611ha

W:\active\160401242_OrleansII\Design\storming\Subdivision\160401242-DB.dwg
2018/04/22 14:56:47: mtdm

Legend

-  406mm \varnothing WATERMAIN
-  305mm \varnothing WATERMAIN
-  203mm \varnothing WATERMAIN

-  EX. 406mm \varnothing WATERMAIN
-  EX. 305mm \varnothing WATERMAIN
-  EX. 203mm \varnothing WATERMAIN

-  FUT. 406mm \varnothing WATERMAIN
-  FUT. 305mm \varnothing WATERMAIN
-  FUT. 203mm \varnothing WATERMAIN

Notes

1	ISSUED FOR DRAFT PLAN OF SUBDIVISION	DT	KS	18.04.11
Revision		By	Appd.	YY.MM.DD

File Name:	160401242-DB	DT	KS	DT	18.04.09
		Dwn.	Chkd.	Desgn.	YY.MM.DD


Permit-Seal

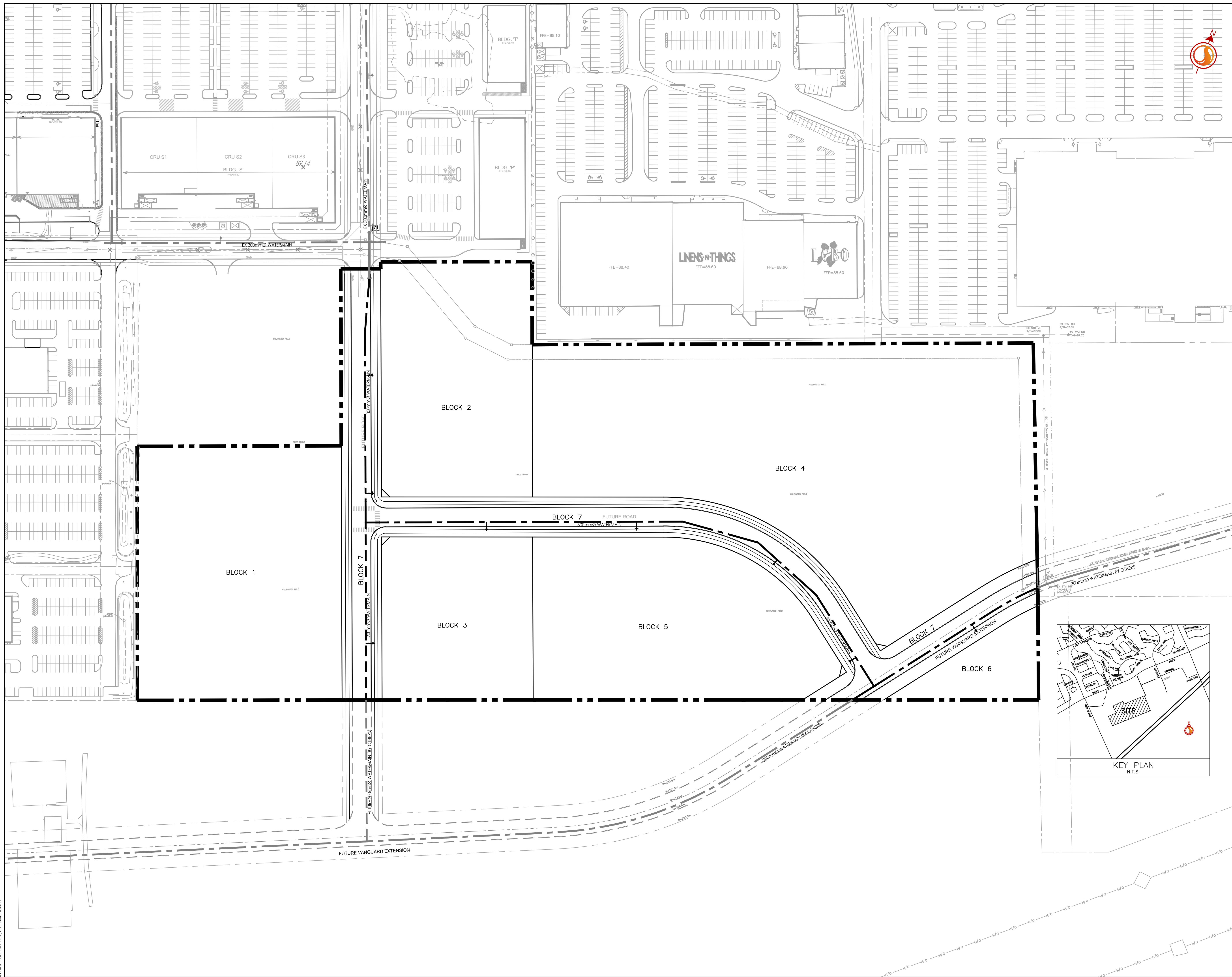
Client/Project
INNES SHOPPING CENTRES LIMITED

ORLEANS II
DRAFT PLAN OF SUBDIVISION
Ottawa, ON

Title

OVERALL WATERMAIN LAYOUT

Project No.	Scale	0	10	30	50m
160401419	1:1000				
Drawing No.	Sheet	Revision			



W:\active\160401242 - Orleans II Design\Drawing\Subdivision\160401242-DB.dwg
2018/04/12 14:56:47 by: mlidout_bom

Copyright Reserved
The Contractor shall verify and be responsible for all dimensions. DO NOT scale the drawing - any errors or omissions shall be reported to Stantec without delay.
The Copyrights to all designs and drawings are the property of Stantec. Reproduction or use for any purpose other than that authorized by Stantec is forbidden.

Legend

- EXISTING ELEVATION
- PROPOSED ELEVATION
- EXISTING DESIGN ELEVATION
- MAJOR OVERLAND FLOW ROUTE
- MAJOR SYSTEM DIVIDE

Notes

1	ISSUED FOR DRAFT PLAN OF SUBDIVISION	DT	KS	18.04.11
Revision		By	Appd.	YY.MM.DD

File Name:	160401242-DB	DT	KS	DT	18.04.09
		Desn.	Chkd.	Desn.	YY.MM.DD

Permit-Seal

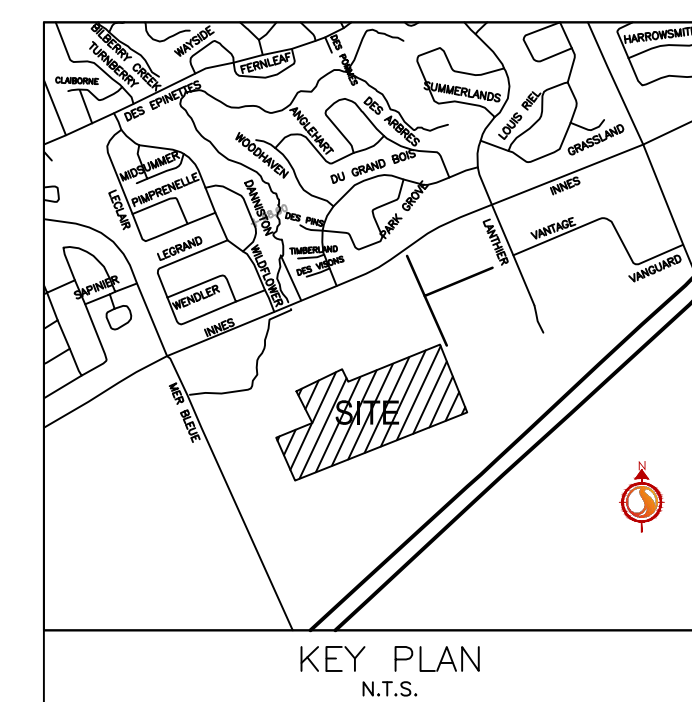
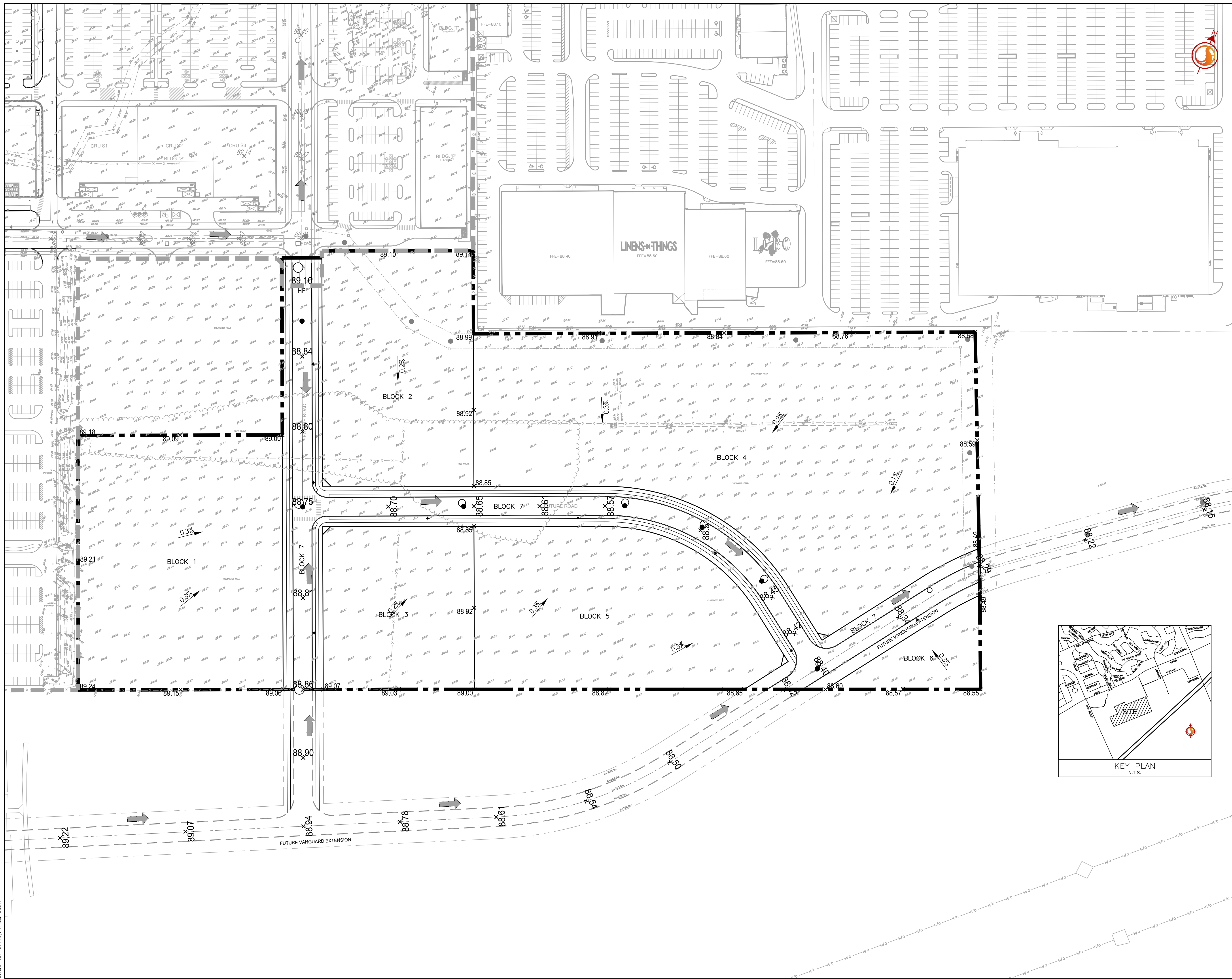
Client/Project
INNES SHOPPING CENTRES LIMITED

ORLEANS II
DRAFT PLAN OF SUBDIVISION
Ottawa, ON

Title

OVERALL GRADING PLAN

Project No.	Scale		
160401419	1:1000	0	10 30 50m
Drawing No.	Sheet	Revision	
GP-1	4 of 4	1	



W:\active\160401242_OrleansII\Design\Grading\Subdivision\160401242-DB.dwg
2018/04/22 14:54:57: hmlout1.dwg