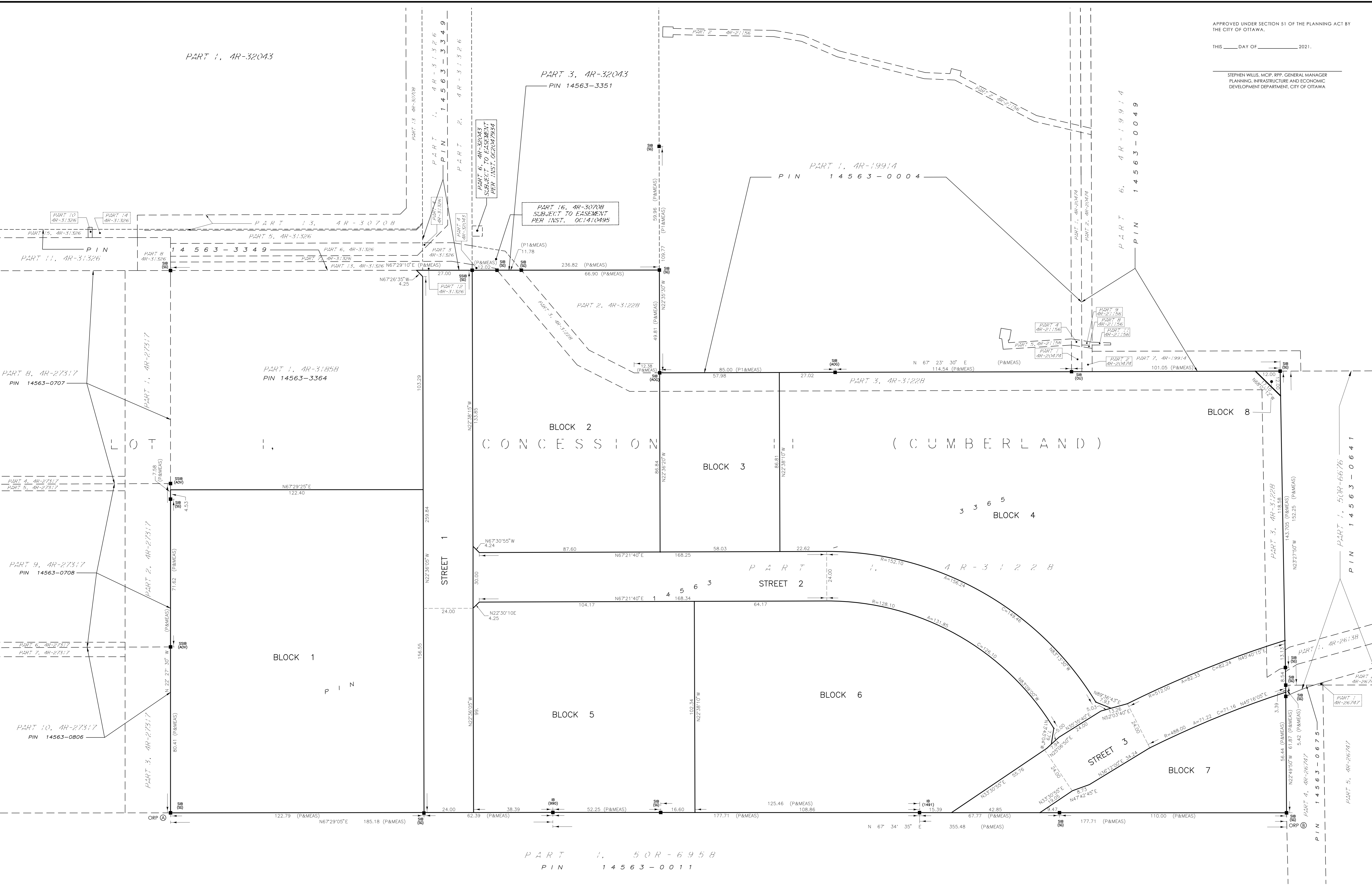


1 June 2021 12:07 PM



APPROVED UNDER SECTION 51 OF THE PLANNING ACT BY THE CITY OF OTTAWA.

THIS ____ DAY OF _____ 2021.

STEPHEN WILLIS, M.C.P., R.P.P., GENERAL MANAGER
PLANNING, INFRASTRUCTURE AND ECONOMIC DEVELOPMENT DEPARTMENT, CITY OF OTTAWA

PLAN 4M-

I HEREBY CERTIFY THAT THIS PLAN 4M-_____ IS REGISTERED IN THE LAND REGISTRY OFFICE FOR THE LAND TITLES DIVISION OF OTTAWA-CARLETON (No.4) AT _____ O'CLOCK ON THE _____ DAY OF _____, 2021 AND ENTERED IN THE REGISTER FOR P.I.N. 14563-3365, AND THE REQUIRED CONSENTS ARE REGISTERED AS PLAN DOCUMENT NUMBER OC-_____.

REPRESENTATIVE FOR LAND REGISTRAR

THIS PLAN COMPRISES ALL OF PLAN 4R-31228, PART OF BLOCK 2, 3, 4 AND ALL OF 8 ARE SUBJECT TO EASEMENT AS IN INST. OC1410495.

PLAN OF SUBDIVISION OF
PART OF LOT 1 CONCESSION 11
(GEOGRAPHIC TOWNSHIP OF CUMBERLAND)
CITY OF OTTAWA

Scale 1:750

METRIC CONVERSION
DISTANCES AND COORDINATES SHOWN ON THIS PLAN ARE IN METRES AND CAN BE CONVERTED TO FEET BY DIVIDING BY 0.3048

GRID SCALE CONVERSION
DISTANCES ARE GROUND AND CAN BE CONVERTED TO GRID BY MULTIPLYING BY THE COMBINED SCALE FACTOR OF 0.999966.

BEARING NOTE
BEARINGS ARE GRID, DERIVED FROM CAN-NET VRS NETWORK GPS OBSERVATIONS ON NCC HORIZONTAL CONTROL MONUMENTS 19773035 AND 19680191, CENTRAL MERIDIAN, 76° 30' WEST LONGITUDE MTM ZONE 9, NAD83 (ORIGINAL).

19773035 N:500040.42 E:324888.04
19680191 N:5033544.26 E:388064.94

LEGEND

■	DENOTES	FOUND MONUMENTS
□	SET MONUMENTS	IRON BAR
○	ROUND IRON BAR	STANDARD IRON BAR
SB	SHORT STANDARD IRON BAR	CUT CROSS
SSB	CONCRETE PIN	WITNESS
CC	PROPERTY IDENTIFICATION NUMBER	MEASURED
CP	PROPORTIONED	PROP
WT	ORIGIN UNKNOWN	QU
PI	STANTEC GEOMATICS LTD.	SG
MEAS	OBSERVED REFERENCE POINT	ORP
PROP	ANNIS, O'SULLIVAN, VOLLEBECK LTD.	ACOG
QU	J.D. BARNES LTD.	JDB
SG	J.G. PAYETTE O.L.S.	990
ORP	D. DUBRICK O.L.S.	1491
ACOG	PLAN 4R-31228	P

OBSERVED REFERENCE POINTS DERIVED FROM THE CAN-NET VRS NETWORK GPS OBSERVATIONS ON NCC HORIZONTAL CONTROL MONUMENTS 19773035 AND 19680191, CENTRAL MERIDIAN, 76° 30' WEST LONGITUDE MTM ZONE 9, NAD83 (ORIGINAL), COORDINATES TO URBAN ACCURACY PER SEC 14(2) OF O. REG. 214/10

ORP ID	NORTHING	EASTING
①	5035192.24	382999.31
②	5035398.73	383498.92

COORDINATES CANNOT, IN THEMSELVES, BE USED TO RE-ESTABLISH CORNERS OR BOUNDARIES SHOWN ON THIS PLAN.

OWNER'S CERTIFICATE ALL OF PIN 14563-3365

THIS IS TO CERTIFY THAT:

- BLOCKS 1 TO 8, BOTH INCLUSIVE, THE STREET, NAMELY, HAVE BEEN LAID OUT IN ACCORDANCE WITH OUR INSTRUCTIONS.
- THE STREET ARE DEDICATED TO THE CITY OF OTTAWA AS PUBLIC HIGHWAYS.

DATE _____ *PRESIDENT
INNES SHOPPING CENTRE LIMITED
I HAVE THE AUTHORITY TO BIND THE CORPORATION

SURVEYOR'S CERTIFICATE

I CERTIFY THAT:

- THIS SURVEY AND PLAN ARE CORRECT AND IN ACCORDANCE WITH THE SURVEYS ACT, THE SURVEYORS ACT AND THE LAND TITLES ACT AND THE REGULATIONS MADE UNDER THEM.
- THE SURVEY WAS COMPLETED ON THE ____ DAY OF _____, 2021.

DATE _____ FRANCIS LAU
ONTARIO LAND SURVEYOR

Stantec Geomatics Ltd.

CANADA LANDS SURVEYORS
ONTARIO LAND SURVEYORS
1331 CLIVE AVENUE, SUITE 400
OTTAWA, ONTARIO, K2C 3G4
TEL. 613.722.4020 FAX. 613.722.2799
stantec.com

DRAWN: NJ CHECKED: FL DATE: FL PROJECT NO.: 161614382-132