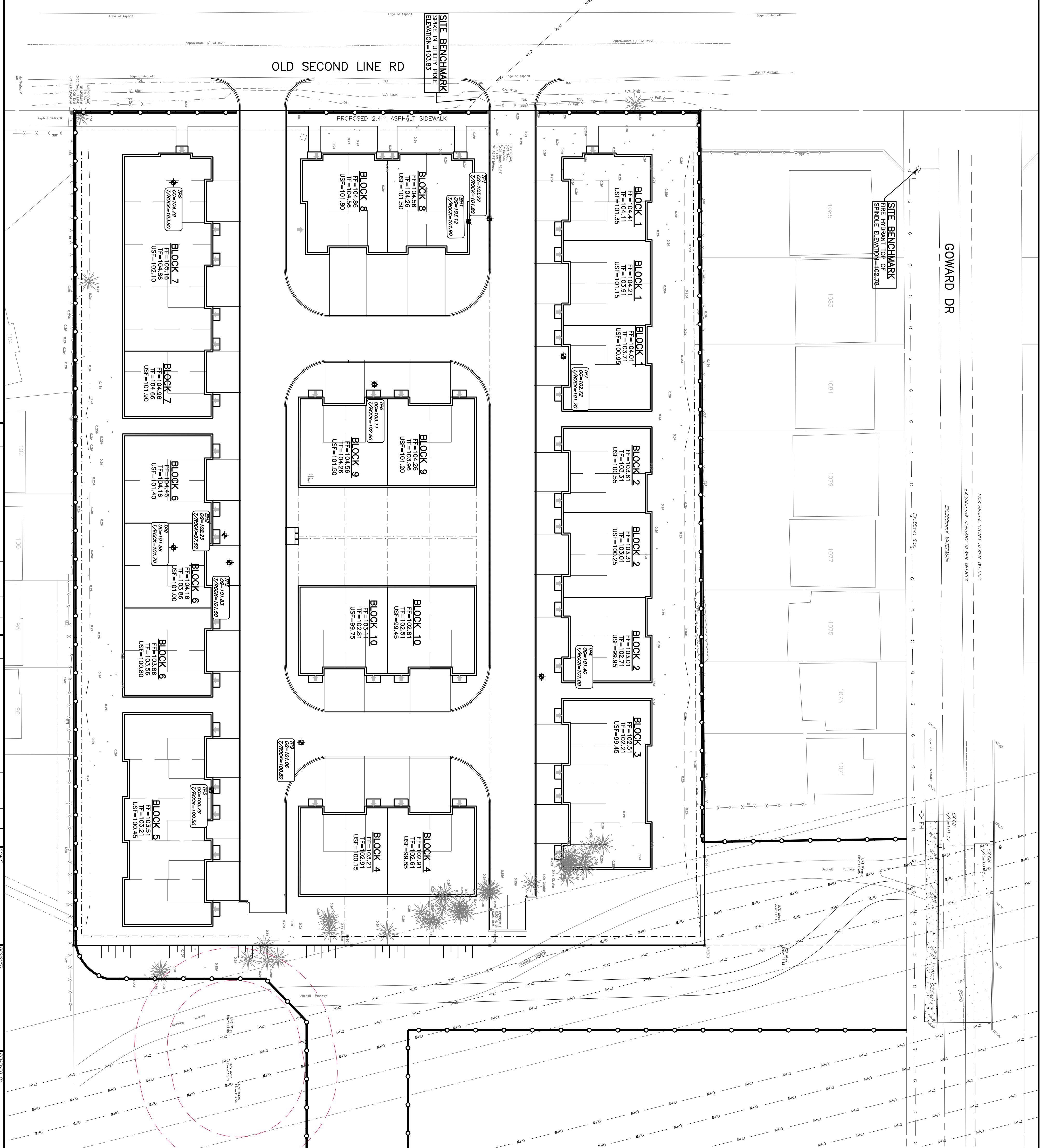
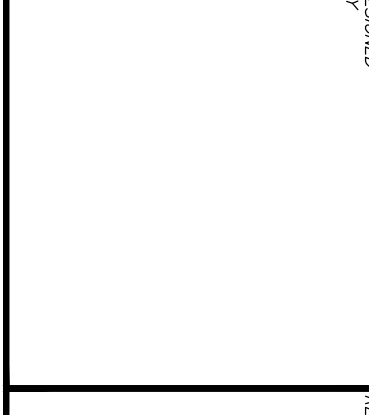
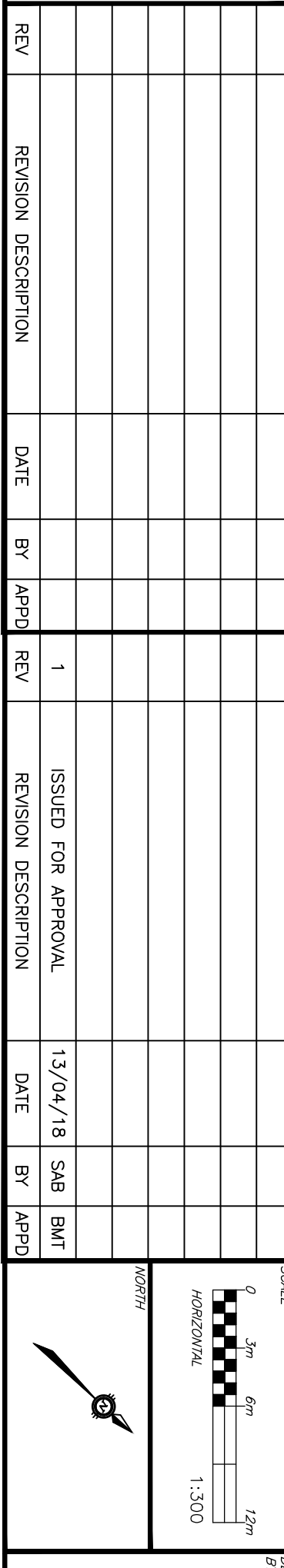


CAUTION
 OF ALL POLE LINES, CONDUITS, WATERMANS, SEWERS AND OTHER UNDERGROUND AND OVERGROUND UTILITIES AND STRUCTURES IS NOT NECESSARY AND WHERE SHOWN, THE ACCURACY OF THE POSITION OF SUCH UTILITIES AND STRUCTURES IS NOT GUARANTEED. BEFORE STARTING WORK, DETERMINE THE EXACT LOCATION OF ALL SUCH UTILITIES AND DAMAGE TO THEM.



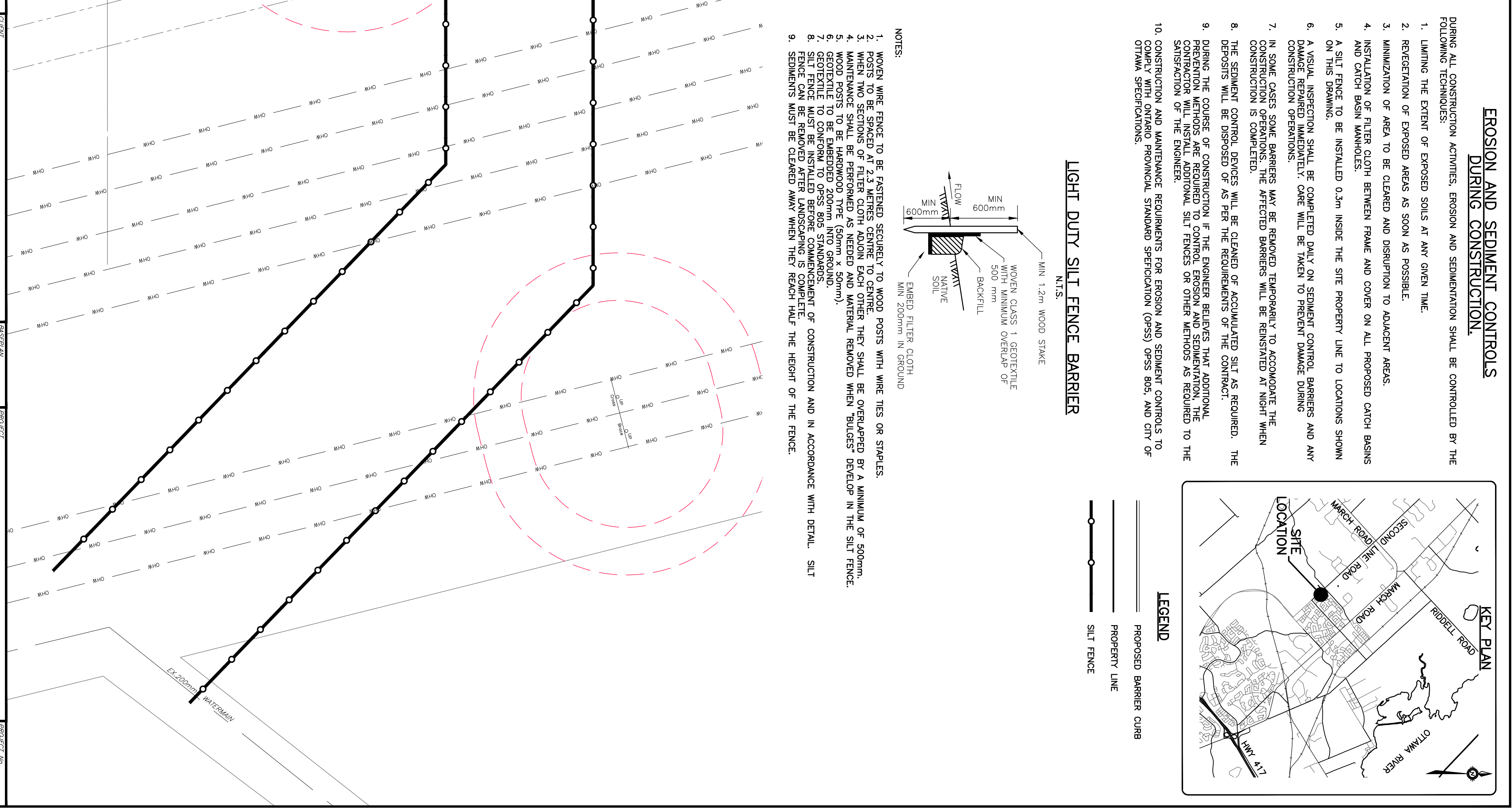
REV	REVISION DESCRIPTION	DATE	BY	APPD	REV	REVISION DESCRIPTION	DATE	BY	APPD
1	ISSUED FOR APPROVAL	13/04/18	SAB	BMT					



exp.
 EXP. INC.
 904 LADY ELLEN PLACE
 OTTAWA, ON. K1Z 5J5
 613.421.1515

CLIENT	PROJECT
THEREBERG HOMES 904 LADY ELLEN PLACE OTTAWA, ON. K1Z 5J5 613.421.1515	SECOND LINE ROAD 1158 OLD SECOND LINE ROAD KANATA, ONTARIO.

DESIGN	DATE	BY	APPD
ARCHITECT	13/04/18	SAB	BMT
ENGINEER	13/04/18	B.M. THEBERGE	B.M. THEBERGE
PROJECT MANAGER	13/04/18	SAB	BMT
APPROVED	13/04/18	B.M. THEBERGE	B.M. THEBERGE
DATE	13/04/18		



EROSION AND SEDIMENT CONTROLS DURING CONSTRUCTION

- DURING ALL CONSTRUCTION ACTIVITIES, EROSION AND SEDIMENTATION SHALL BE CONTROLLED BY THE FOLLOWING TECHNIQUES:
1. LIMITING THE EXTENT OF EXPOSED SOILS AT ANY GIVEN TIME.
 2. REGENERATION OF EXPOSED AREAS AS SOON AS POSSIBLE.
 3. MINIMIZATION OF AREA TO BE CLEARED AND DISRUPTION TO ADJACENT AREAS.
 4. INSTALLATION OF FILTER CLOTH BENTONITE FRAME AND COVER ON ALL PROPOSED CATCH BASINS AND CATCH BASIN MANHOLES.
 5. A SILT FENCE TO BE INSTALLED 0.3m INSIDE THE SITE PROPERTY LINE TO LOCATIONS SHOWN ON THIS DRAWING.
 6. A VISUAL INSPECTOR SHALL BE EMPLOYED DAILY ON SEPARATE CONTROL BARRIERS AND ANY DAMAGE REPAIRED IMMEDIATELY. CARE WILL BE TAKEN TO PREVENT DAMAGE DURING CONSTRUCTION OPERATIONS.
 7. IN SOME CASES SOME BARRIERS MAY BE REMOVED TEMPORARILY TO ACCOMMODATE THE CONSTRUCTION IS COMPLETED.
 8. THE SEDIMENT CONTROL DEVICES WILL BE CLEARED OF ACCUMULATED SILT AS REQUIRED. THE DEPOSITS WILL BE DISPOSED OF AS PER THE REQUIREMENTS OF THE CONTRACT.
 9. PREVENTION METHODS ARE REQUIRED TO CONTROL EROSION AND SEDIMENTATION, THE CONTRACTOR WILL INSTALL ADDITIONAL SILT FENCES OR OTHER METHODS AS REQUIRED TO THE SATISFACTION OF THE ENGINEER.
 10. CONSTRUCTION AND MAINTENANCE REQUIREMENTS FOR EROSION AND SEDIMENT CONTROLS TO OTTAWA SPECIFICATION PROVINCIAL STANDARD SPECIFICATION (PSSS) CROSS 8005, AND CITY OF OTTAWA SPECIFICATION.