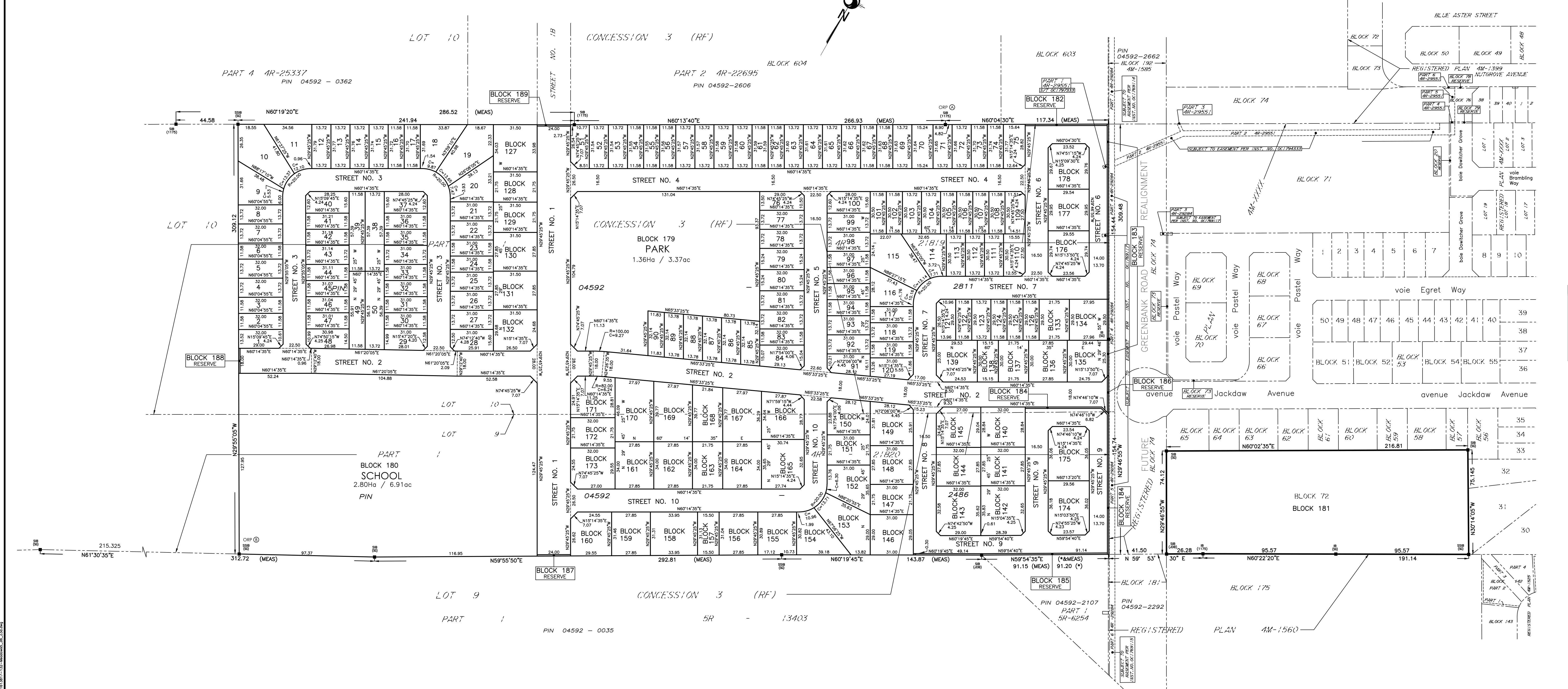


18 March 2019 09:24 AM
C:\Users\j11111111\OneDrive\Documents\Stantec\Projects\04592-2486\04592-2486_18111111_12-2486-04592-2486.dwg

APPROVED UNDER SECTION 51 OF THE PLANNING ACT BY THE CITY OF OTTAWA THIS _____ DAY OF _____, 20____.

STEPHEN WILLIS, MCIP, RPP, GENERAL MANAGER
PLANNING, INFRASTRUCTURE AND ECONOMIC DEVELOPMENT DEPARTMENT, CITY OF OTTAWA

PLAN 4M-
I CERTIFY THAT THIS PLAN IS REGISTERED IN THE LAND REGISTRY OFFICE FOR THE LAND TITLE DIVISION OF OTTAWA-CARLETON No. 4 AT _____ O'CLOCK ON THE _____ DAY OF _____, 2019 AND ENTERED IN THE PARCEL REGISTER FOR PROPERTY IDENTIFIER 04592-2486, 04592-2811 AND THE REQUIRED CONSENTS ARE REGISTERED AS PLAN DOCUMENT NUMBER OC-_____.
REPRESENTATIVE FOR LAND REGISTRAR



THIS PLAN COMPRISES OF PART OF PIN 04592-2486 AND PART OF PIN 04592-2811, PART OF BLOCK 183 AND STREET 6; SUBJECT TO EASEMENT OVER PART 4 ON PLAN 4R-29284 AS IN OC1769117 AND SUBJECT TO EASEMENT OVER PART 1 ON PLAN 4R-29251 AS IN OC1797333.

PLAN OF SUBDIVISION of
PART OF LOTS 9 AND 10
CONCESSION 3 (RIDEAU FRONT)
AND BLOCK 72
REGISTERED PLAN 4M-XXXX
CITY OF OTTAWA

Scale 1:1250
0 20 40 60 80 METRES

METRIC CONVERSION
DISTANCES AND COORDINATES SHOWN ON THIS PLAN ARE IN METRES AND CAN BE CONVERTED TO FEET BY DIVIDING BY 0.3048

GRID SCALE CONVERSION
DISTANCES ARE GROUND AND CAN BE CONVERTED TO GRID BY MULTIPLYING BY THE COMBINED SCALE FACTOR OF 0.999933.

BEARING NOTE
BEARINGS ARE GRID, DERIVED FROM CANMET-VIS NETWORK GPS OBSERVATIONS ON NCC HORIZONTAL CONTROL MONUMENTS 19773035 AND 19680191, CENTRAL MERIDIAN, 76° 30' WEST LONGITUDE MTM ZONE 9, NAD83 (ORIGINAL).
19773035 N:5006060.42 E:324888.04
19680191 N:5033564.26 E:388064.94

OBSERVED REFERENCE POINTS DERIVED FROM THE CANMET-VIS NETWORK GPS OBSERVATIONS ON NCC HORIZONTAL CONTROL MONUMENTS 19773035 AND 19680191, CENTRAL MERIDIAN, 76° 30' WEST LONGITUDE MTM ZONE 9, NAD83 (ORIGINAL). COORDINATES TO URBAN ACCURACY PER SEC. 14(2) OF O. REG. 214/10

ORP ID	NORTHING	EASTING
①	5012066.56	363839.78
②	5015846.28	363532.10

COORDINATES CANNOT, IN THEMSELVES, BE USED TO RE-ESTABLISH CORNERS OR BOUNDARIES SHOWN ON THIS PLAN.

LEGEND

Symbol	Denotes	Found Monuments
■	DENOTES	FOUND MONUMENTS
□	SET MONUMENTS (B)	SET MONUMENTS (B)
IB	IRON BAR	IRON BAR
IBB	ROUND IRON BAR	ROUND IRON BAR
SIB	STANDARD IRON BAR	STANDARD IRON BAR
CSIB	SHORT STANDARD IRON BAR	SHORT STANDARD IRON BAR
CP	CUT CROSS	CUT CROSS
CCP	CONCRETE PIN	CONCRETE PIN
WIT	WITNESS	WITNESS
PIN	PROPERTY IDENTIFICATION NUMBER	PROPERTY IDENTIFICATION NUMBER
MEAS	MEASURED	MEASURED
PROP	PROPORTIONED	PROPORTIONED
OU	ORIGIN UNKNOWN	ORIGIN UNKNOWN
SD	STANTEC GEOMATICS LTD.	STANTEC GEOMATICS LTD.
ORP	OBSERVED REFERENCE POINT	OBSERVED REFERENCE POINT

OWNER'S CERTIFICATE PART OF PIN 04592-2486 PART OF PIN 04592-2811
THIS IS TO CERTIFY THAT:
1. LOTS 1 TO 126, BOTH INCLUSIVE, BLOCKS 127 TO 181, BOTH INCLUSIVE, THE STREETS, NAMELY 1 TO 10, AND RESERVES, NAMELY BLOCKS 182, 183, 184, 185, 186, 187, 188 AND 189, HAVE BEEN LAID OUT IN ACCORDANCE WITH OUR INSTRUCTIONS.
2. THE STREETS ARE DEDICATED TO THE CITY OF OTTAWA AS PUBLIC HIGHWAYS.

DATE _____ CHRISTOPHER TAGGART
TAMARACK (NEPEAN) CORPORATION
(HAVE THE AUTHORITY TO BIND THE CORPORATION)

SURVEYOR'S CERTIFICATE
I CERTIFY THAT:
1. THIS SURVEY AND PLAN ARE CORRECT AND IN ACCORDANCE WITH THE SURVEY ACT, THE SURVEYORS ACT AND THE LAND TITLES ACT AND THE REGULATIONS MADE UNDER THEM.
THE SURVEY WAS COMPLETED ON THE DAY OF, 2019.

DATE _____ BRIAN J. WEBSTER
ONTARIO LAND SURVEYOR

CURVE TABLE

LOT/BLOCK	RADIUS	ARC	CHORD	BEARING
9	20.00	5.55	5.53	N21°58'10"W
10	20.00	13.63	13.37	N5°30'20"E
11	20.00	12.39	12.10	N42°38'15"E
18	20.00	9.97	9.87	N74°31'30"E
19	20.00	13.93	13.65	N71°14'30"W
20	20.00	7.52	7.47	N40°31'30"W
114	20.00	7.26	7.21	N49°07'35"E
115	20.00	13.38	13.14	N18°50'15"E
116	20.00	10.27	10.16	N15°02'45"W
152	20.00	6.32	6.30	N20°42'00"W
153	20.00	13.99	13.71	N08°23'55"E
154	20.00	11.10	10.96	N44°20'25"E
171	82.00	6.25	6.24	N62°25'50"E
179	100.00	9.28	9.27	N62°54'00"E

Stantec Geomatics Ltd.
CANADA LAND SURVEYORS
ONTARIO LAND SURVEYORS
1331 CLYDE AVENUE, SUITE 400
OTTAWA, ONTARIO, K2C 3S4
TEL: 613.722.4400 FAX: 613.722.2299
HST#R13087