

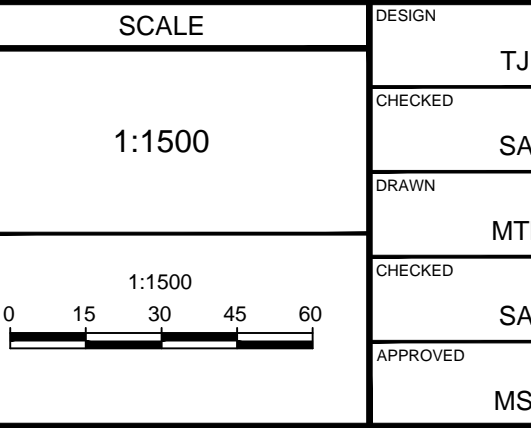
- LEGEND**
- SITE BOUNDARY
  - SANITARY DRAINAGE AREA BOUNDARY
  - PROPOSED SANITARY SEWER AND MANHOLE
  - EXISTING SANITARY SEWER AND MANHOLE
  - EXISTING SANITARY SEWER WITH DIRECTION OF FLOW
  - AREA ID
  - MANHOLE TO MANHOLE
  - POPULATION EQUIVALENT \*PLS ADDITIONAL NON-RESIDENTIAL FLOW
  - AREA IN HECTARES
  - DIRECTION OF SANITARY FLOW

1:116132 SAN, July 15, 2019, 8:44am, gpr0000

**NOTE:**  
 THE POSITION OF ALL POLE LINES, CONDUITS, WATERMANS, SEWERS AND OTHER UNDERGROUND AND OVERGROUND UTILITIES AND STRUCTURES IS NOT NECESSARILY SHOWN ON THE CONTRACT DRAWINGS, AND WHERE SHOWN, THE ACCURACY OF THE POSITION OF SUCH UTILITIES AND STRUCTURES IS NOT GUARANTEED. BEFORE STARTING WORK, DETERMINE THE EXACT LOCATION OF ALL SUCH UTILITIES AND STRUCTURES AND ASSUME ALL LIABILITY FOR DAMAGE TO THEM.

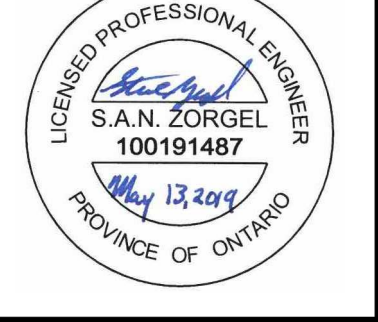
**PRELIMINARY  
NOT FOR  
CONSTRUCTION**

No.	REVISION	DATE	BY
2	REVISED AS PER CITY OF OTTAWA COMMENTS	MAY 13/19	MSP
1	ISSUED FOR DRAFT PLAN OF SUBDIVISION APPLICATION	JULY 23/18	MSP



PREPARED	TJM
CHECKED	SAZ
DRAWN	MTM
CHECKED	SAZ
APPROVED	MSP

FOR REVIEW ONLY



REFER TO _____ FOR ADDITIONAL NOTES	CITY OF OTTAWA CU DEVELOPMENTS INC. 1053, 1075 AND 1145 MARCH ROAD DRAWING NAME SANITARY DRAINAGE AREA PLAN	PROJECT No. 116132-00 REV #2 116132-SAN
-------------------------------------	---	--

#17801  
 D07-16-18-0023