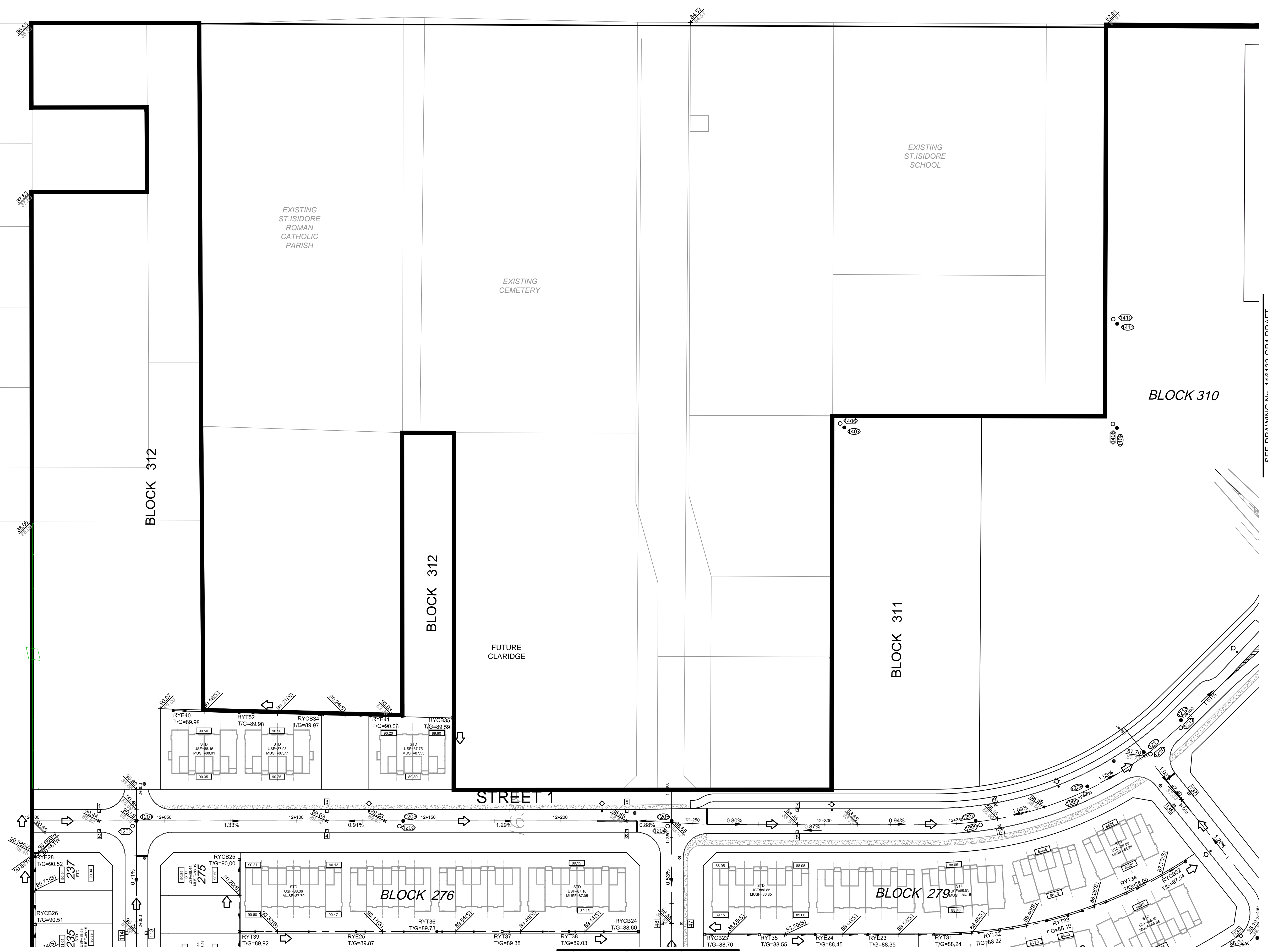
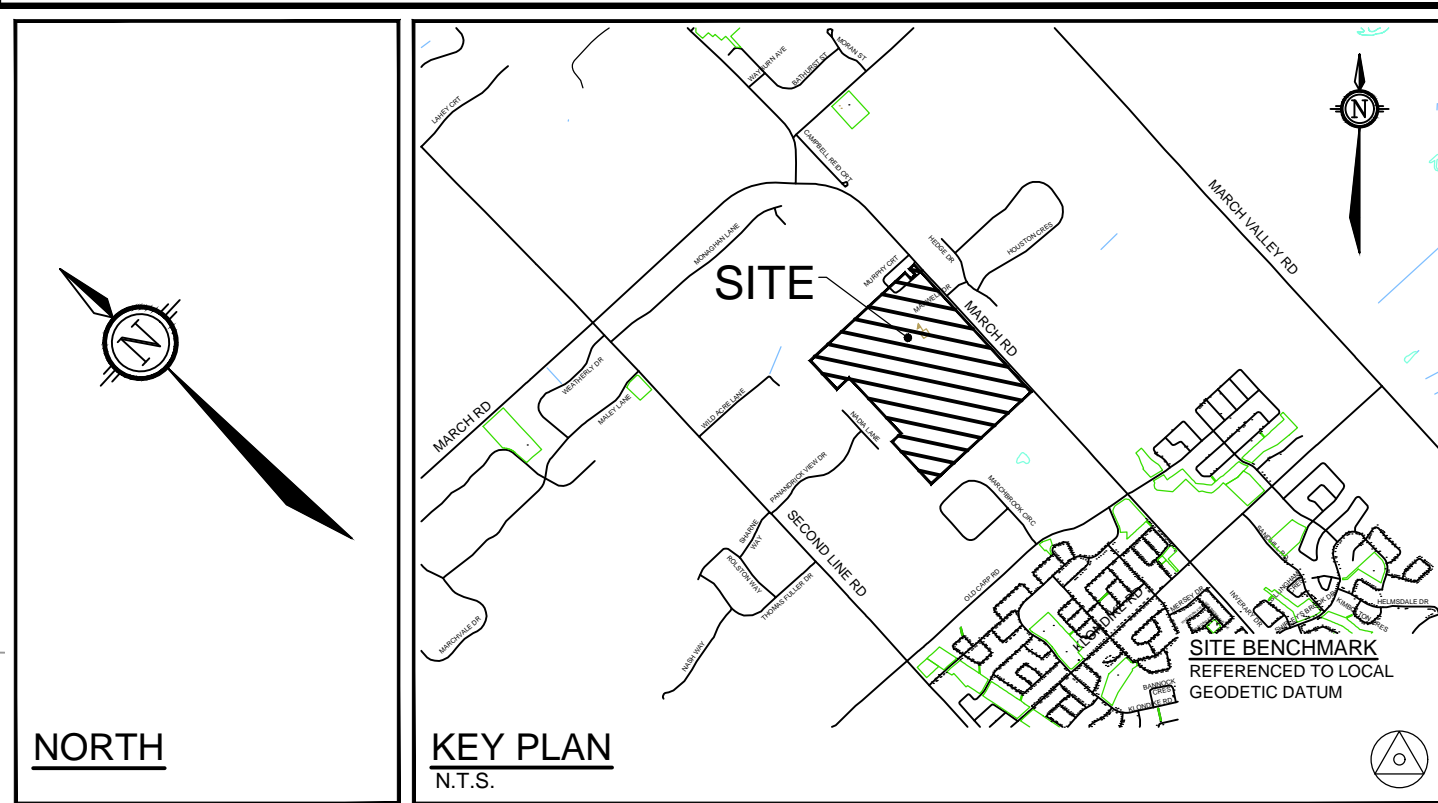


# MARCH



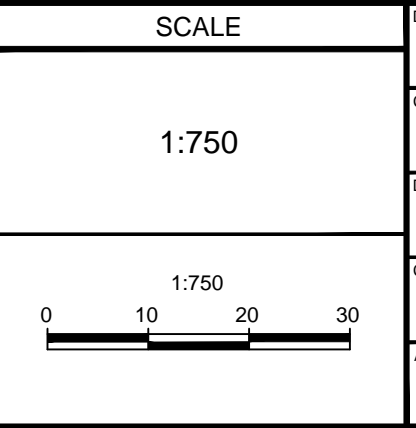
SEE DRAWING No. 116132-GP4-DRAFT

REFER TO \_\_\_\_\_ FOR ADDITIONAL NOTES

**NOTE:**  
THE POSITION OF ALL POLE LINES, CONDUITS, WATERMANS, SEWERS AND OTHER UNDERGROUND AND OVERGROUND UTILITIES AND STRUCTURES IS NOT NECESSARILY SHOWN ON THE CONTRACT DRAWINGS, AND WHERE SHOWN, THE ACCURACY OF THE POSITION OF SUCH UTILITIES AND STRUCTURES IS NOT GUARANTEED. BEFORE STARTING WORK, DETERMINE THE EXACT LOCATION OF ALL SUCH UTILITIES AND STRUCTURES AND ASSUME ALL LIABILITY FOR DAMAGE TO THEM.

**PRELIMINARY  
NOT FOR  
CONSTRUCTION**

No.	REVISION	DATE	BY
1.	ISSUED FOR DRAFT PLAN OF SUBDIVISION APPLICATION	JULY 23/18	MSP



FOR REVIEW ONLY

DESIGN: SAZ

CHECKED: DDB

DRAWN: RBG

CHECKED: SAZ

APPROVED: DDB

PROFESSIONAL ENGINEER  
S.A.V. JONGEL  
100191487  
PROVINCE OF ONTARIO

PROFESSIONAL ENGINEER  
D.D. BLAIR  
100122737  
PROVINCE OF ONTARIO

**NOVATECH**  
Engineers, Planners & Landscape Architects  
Suite 200, 240 Michael Cowpland Drive  
Ottawa, Ontario, Canada K2M 1P6  
Telephone: (613) 254-9643  
Facsimile: (613) 254-5867  
Website: www.novatech-eng.com

CITY OF OTTAWA  
CU DEVELOPMENTS INC.  
1053, 1075 AND 1145 MARCH ROAD

DRAWING NAME: GRADING PLAN

PROJECT No.: 116132

REV # 1

DRAWING No.: 116132-GR3-DRAFT

C:\Users\116132\OneDrive\116132-GR3-DRAFT.dwg, 116132-GR3-DRAFT, Jul 26, 2018 - 3:26pm, szajg