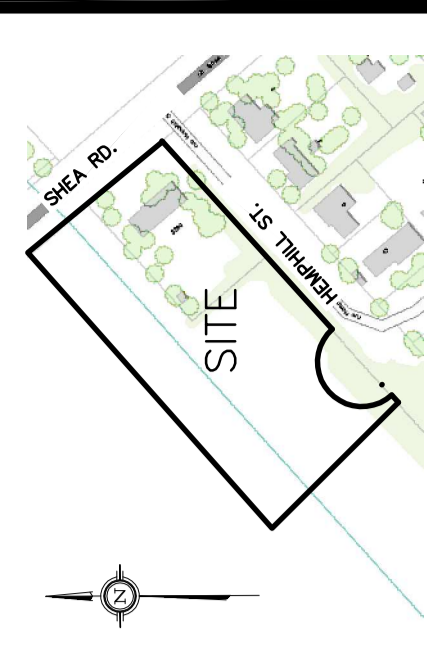


DRAWING LEGEND

- CB CATCH BASIN
- MH MANHOLE
- CB/MH CATCH BASIN/MANHOLE
- WS/WM WATER SERVICE / WATERMAIN
- SS SANITARY SEWER
- ST STORM SEWER
- FIH FIRE HYDRANT
- UP O UTILITY POLE
- EXISTING GRADE ELEVATION
- + 93.79 PROPOSED GRADE ELEVATION
- 0.3% EXISTING SLOPE OF GRADE
- 0.3% SLOPE OF GRADE
- SWALE/DITCH (CENTERLINE)
- LOA - TOP OF SLOPE
- BOA - BOTTOM OF SLOPE
- PROPERTY LINE
- FEL FIRST FLOOR ELEVATION
- TOP OF FOUNDATION ELEVATION
- BFL BASEMENT FLOOR ELEVATION
- USF UNDERSIDE OF FOOTING ELEVATION

KEY PLAN

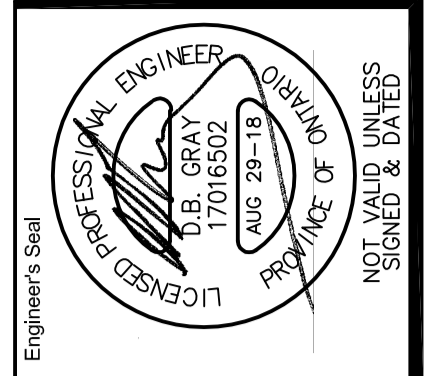


No.	Date	REVISION
1	DEC 15-17	ISSUED FOR CLIENT REVIEW
2	AUG 29-18	ISSUED FOR APPROVAL

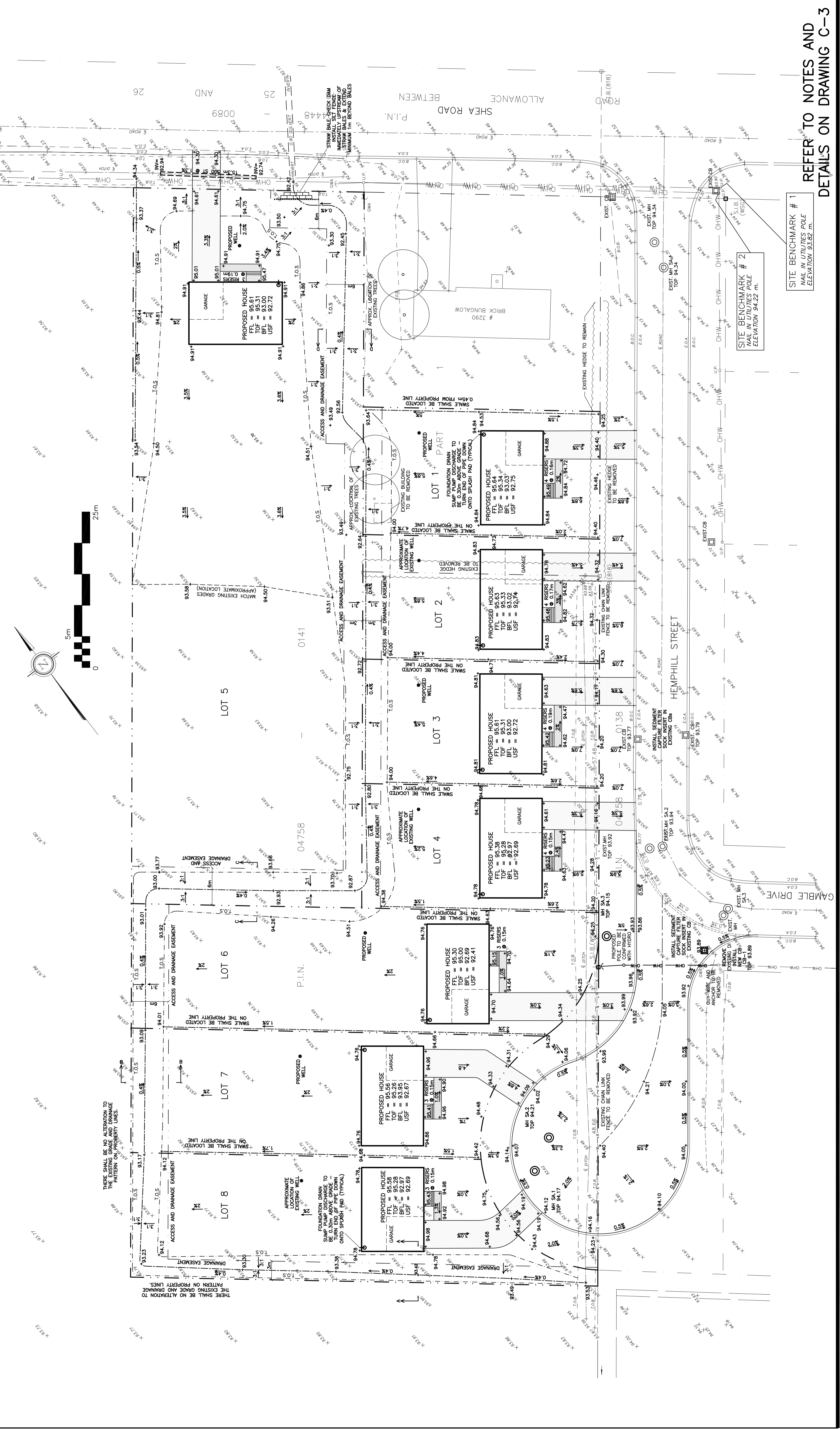
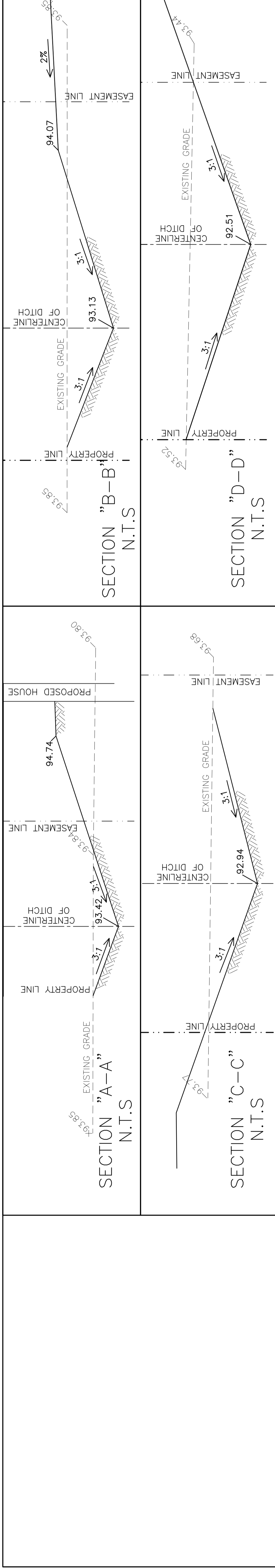
D. B. GRAY ENGINEERING INC.
 700 Long Point Circle
 Ottawa, Ontario K1T 4E9
 Tel: 613-425-8044
 dgray@engr.com

**PROPOSED 8-LOT
 RESIDENTIAL DEVELOPMENT
 HEMPHILL STREET/SHEA ROAD
 RICHMOND, ONTARIO**

**GRADING PLAN AND
 EROSION & SEDIMENT
 CONTROL PLAN**



Drawing No. **C-2**
 of **3**



**REFER TO NOTES AND
 DETAILS ON DRAWING C-3**

SITE BENCHMARK # 1
 NAIL IN UTILITIES POLE
 ELEVATION 93.82 m.

SITE BENCHMARK # 2
 NAIL IN UTILITIES POLE
 ELEVATION 94.22 m.